

**CLELAND 15-1HZ**

SURFACE LOCATION

WELLBORE CONTINUES INTO SECTION 22

MATCH LINE SEE SHEET 2

**Section 15 Data:**

- N. 1/4 COR.**: SEC. 15, T1N, R68W FOUND 3 1/4" ALUM. CAP L.S. NO. 22098
- NE. COR.**: SEC. 15, T1N, R68W FOUND 3 1/4" ALUM. CAP P.L.S. NO. 8953
- E. 1/4 COR.**: SEC. 15, T1N, R68W FOUND 3 1/4" ALUM. CAP P.L.S. NO. 8953
- SE. COR.**: SEC. 15, T1N, R68W FOUND 2" BRASS CAP ILLEGIBLE
- S. 1/4 COR.**: SEC. 15, T1N, R68W FOUND 3 1/4" ALUM. CAP P.L.S. NO. 8953
- SW. COR.**: SEC. 15, T1N, R68W FOUND 2" ALUM. CAP ILLEGIBLE
- W. 1/4 COR.**: SEC. 15, T1N, R68W FOUND 2" ALUM. CAP L.S. NO. 14083
- NW. COR.**: SEC. 15, T1N, R68W FOUND 2 1/2" ALUM. CAP ILLEGIBLE

**Center 1/4 COR.**: SEC. 15, T1N, R68W FOUND 2 1/2" ALUM. CAP P.L.S. NO. 28285

**Borehole Location Details:**

- HEEL LOCATION**: NAD 83  
LATITUDE= 40.044874°  
LONGITUDE= -104.999091°
- BOTTOM HOLE LOCATION**: NAD 83  
LATITUDE= 40.015029°  
LONGITUDE= -104.998420°  
LATITUDE= 40°00'54.104"  
LONGITUDE= -104°59'54.312"

**Boundaries and Distances:**

- Top Boundary**: S 89°43'43" W 2697.87' (M)
- Right Boundary**: S 89°38'08" W 2695.24' (M)
- Bottom Boundary**: S 89°31'22" W 2679.61' (M)
- Left Boundary**: N 00°22'42" W 2642.44' (M)
- Internal North-South Lines**:
  - N 00°14'26" W 2637.39' (M)
  - N 00°14'51" W 2639.72' (M)
  - N 00°04'19" W 2635.90' (M)
  - N 00°04'33" W 2635.99' (M)
- Internal East-West Lines**:
  - S 89°37'22" W 2687.09' (M)
  - S 89°36'18" W 2687.67' (M)
  - S 89°33'52" W 2681.06' (M)
- Well Path Distances**:
  - 1978'
  - 1729'
  - 27'
  - 350'

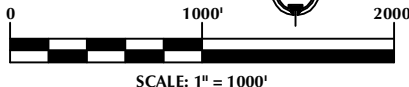
**CERTIFICATE OF SURVEYOR:**

THIS IS TO CERTIFY THAT THE ABOVE PLAT WAS PREPARED FROM FIELD NOTES OF ACTUAL SURVEYS MADE BY ME OR UNDER MY SUPERVISION AND THAT ALL SAME ARE TRUE AND CORRECT TO THE BEST OF MY KNOWLEDGE AND BELIEF. THIS CERTIFICATE DOES NOT REPRESENT A LAND SURVEY PLAT OR IMPROVEMENT SURVEY PLATS DEFINED BY C.R.S. 4-5-102 AND CANNOT BE RELIED UPON TO DETERMINE OWNERSHIP.

*Randall K. French*  
 RANDALL K. FRENCH  
 PROFESSIONAL LAND SURVEYOR  
 COLORADO REGISTRATION NUMBER 38512  
 3/25/19

**NOTICE:** ACCORDING TO COLORADO STATE LAW YOU MUST COMMENCE A LEGAL ACTION BASED UPON ANY DEFECT IN THIS SURVEY WITHIN THREE YEARS AFTER YOU FIRST DISCOVER SUCH DEFECT. IN NO EVENT MAY ANY ACTION BASED UPON ANY DEFECT IN THIS SURVEY BE COMMENCED MORE THAN TEN YEARS FROM THE DATE ON THE CERTIFICATION SHOWN HEREON.

**NOTE:  
MAGNETIC NORTH IS  
CURRENT AS OF 3/19/2019.  
MAGNETIC NORTH CHANGES  
WEST 0°06' PER YEAR.**



**NOTES:**

1. ▲ INDICATES SECTION CORNER.
2. ● INDICATES CALCULATED CORNER.
3. ELEVATION BASED ON NAVD88 (GEOID12B).
4. BASIS OF BEARING DERIVED FROM COLORADO COORDINATE SYSTEM OF 1983 NORTH ZONE.
5. ALL MEASURED DISTANCES ARE GRID.
6. COMBINED SCALE FACTOR: .99972060 CALCULATED FROM THE CENTER 1/4 CORNER OF SECTION 15, T1N, R68W.
7. OPERATOR: TRAVIS HOLLAND / PDOP = 1.4.
8. SEE ADDENDUM TO WELL LOCATION CERTIFICATE FOR EXISTING IMPROVEMENTS WITHIN 500' OF THE WELL PAD.
9. WELL FOOTAGES ARE MEASURED AT RIGHT ANGLES TO THE SECTION LINES.
10. THE BOTTOM OF HOLE BEARS S01°18'50"E, 10873' FROM THE HELL LOCATION.

## WELL PAD - CLELAND 11-15HZ

**CLELAND 15-1HZ  
WELL LOCATION CERTIFICATE  
1729' FSL & 1978' FWL NESW (SURFACE)  
350' FSL & 27' FWL SWSW (HEEL)  
LOCATED IN SECTION 15, WELD COUNTY, COLORADO  
50' FSL & 177' FWL SWSW (BOTTOM)  
LOCATED IN SECTION 27  
T1N, R68W, 6TH P.M.  
BROOMFIELD COUNTY, COLORADO**

**Kerr-McGee Oil &  
Gas Onshore L.P.**  
1099 18th Street  
Denver, Colorado 80202



CONSULTING, LLC

**SHERIDAN OFFICE**  
1095 Saberton Avenue  
Sheridan, Wyoming 82801  
Phone 307-674-0609

**LOVELAND OFFICE**  
6706 North Franklin Avenue  
Loveland, Colorado 80538  
Phone 970-776-4331

**DRAFTED BY:** LMO

CHECKED BY:	RKF
-------------	-----

SHEET NO:

DATE DRAFTED: 3/25/19

DATE SURVEYED: 3/19/19

1

REVISÉ:

FILE NAME:	15-108
------------	--------

1 OF 3

# T1N, R68W

NW. COR.  
SEC. 22, T1N, R68W  
FOUND 2" ALUM. CAP  
ILLEGIBLE

S 89°33'52" W 2681.06' (M)

S 89°31'22" W 2679.61' (M)

MATCH LINE  
SEE SHEET 1

N. 1/4 COR.  
SEC. 22, T1N, R68W  
FOUND 3 1/4" ALUM. CAP  
P.L.S. NO. 8953

NE. COR.  
SEC. 22, T1N, R68W  
FOUND 2" BRASS CAP  
ILLEGIBLE

SURFACE LOCATION: NAD 83  
GROUND ELEVATION= 5151.0'  
LATITUDE= 40.048669°  
LONGITUDE= -104.992126°  
LATITUDE= 40°02'55.209"  
LONGITUDE= -104°59'31.655"  
HEEL LOCATION: NAD 83  
LATITUDE= 40.04874°  
LONGITUDE= -104.999091°  
LATITUDE= 40°02'41.547"  
LONGITUDE= -104°59'56.727"  
BOTTOM HOLE LOCATION: NAD 83  
LATITUDE= 40.015029°  
LONGITUDE= -104.998420°  
LATITUDE= 40°00'54.104"  
LONGITUDE= -104°59'54.312"

CN. 1/16 COR.  
SEC. 22, T1N, R68W  
FOUND 2 1/2" ALUM. CAP  
L.S. NO. 29414

N. 1/16 COR.  
SEC. 21 & SEC. 22  
T1N, R68W  
FOUND 2 1/2" ALUM. CAP  
ILLEGIBLE

N. 1/16 COR.  
SEC. 22 & SEC. 23  
T1N, R68W  
FOUND 2 1/2" ALUM. CAP  
P.L.S. NO. 24670

22

W. 1/4 COR.  
SEC. 22, T1N, R68W  
FOUND 2" ALUM. CAP  
L.S. NO. 25937

S 89°34'46" W  
2687.19' (M)

CENTER 1/4 COR.  
SEC. 22, T1N, R68W  
FOUND 3 1/4" ALUM. CAP  
L.S. NO. 25937

S 89°35'16" W  
2661.40' (M)

E. 1/4 COR.  
SEC. 22, T1N, R68W  
FOUND 3 1/4" ALUM. CAP  
P.L.S. NO. 8953

S. 1/16 COR.  
SEC. 21 & SEC. 22  
T1N, R68W  
FOUND 2" ALUM. CAP  
L.S. NO. 25937

S. 1/16 COR.  
SEC. 22 & SEC. 23, T1N, R68W  
FOUND 3 1/4" ALUM. CAP  
P.L.S. NO. 8953

SW. COR.  
SEC. 22, T1N, R68W  
FOUND 2" ALUM. CAP  
L.S. NO. 25937

S 89°34'55" W 2693.01' (M)

S. 1/4 COR.  
SEC. 22, T1N, R68W  
FOUND 2" ALUM. CAP  
ILLEGIBLE

S 89°40'26" W  
1321.47' (M)

S 89°40'02" W  
1321.53' (M)

SE. COR.  
SEC. 22, T1N, R68W  
FOUND 3 1/4" ALUM. CAP  
P.L.S. NO. 8953

WELLBORE CONTINUES  
INTO SECTION 27

WELD  
COUNTY

BROOMFIELD  
COUNTY

MATCH LINE  
SEE SHEET 3

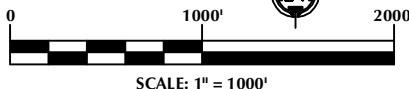
## CERTIFICATE OF SURVEYOR:

THIS IS TO CERTIFY THAT THE ABOVE PLAT WAS PREPARED FROM FIELD NOTES OF ACTUAL SURVEYS MADE BY ME OR UNDER MY SUPERVISION AND THAT THE SAME ARE TRUE AND CORRECT TO THE BEST OF MY KNOWLEDGE AND BELIEF. THIS CERTIFICATE DOES NOT REPRESENT A LAND SURVEY PLAT OR IMPROVEMENT SURVEY PLAT AS DEFINED BY C.R.S. 38-5-102 AND CANNOT BE RELIED UPON TO DETERMINE OWNERSHIP.

*Randall K. French*  
38512  
PROFESSIONAL LAND SURVEYOR  
3/25/19  
COLORADO REGISTRATION NUMBER 38512

NOTICE:  
ACCORDING TO COLORADO STATE LAW YOU MUST TAKE LEGAL ACTION BASED UPON ANY DEFECT IN THIS SURVEY WITHIN THREE YEARS AFTER YOU FIRST DISCOVER SUCH DEFECT. IN NO EVENT MAY ANY ACTION BASED UPON ANY DEFECT IN THIS SURVEY BE COMMENCED MORE THAN TEN YEARS FROM THE DATE ON THE CERTIFICATION SHOWN HEREON.

NOTE:  
MAGNETIC NORTH IS  
CURRENT AS OF 3/19/2019.  
MAGNETIC NORTH CHANGES  
WEST 0°06' PER YEAR.



SCALE: 1" = 1000'

## NOTES:

- ▲ INDICATES SECTION CORNER.
- INDICATES CALCULATED CORNER.
- ELEVATION BASED ON NAVD88 (GEOID12B).
- BASIS OF BEARING DERIVED FROM COLORADO COORDINATE SYSTEM OF 1983 NORTH ZONE.
- ALL MEASURED DISTANCES ARE GRID. COMBINED SCALE FACTOR: .99972060 CALCULATED FROM THE CENTER 1/4 CORNER OF SECTION 15, T1N, R68W. OPERATOR: TRAVIS HOLLAND / PDOP = 1.4.
- SEE ADDENDUM TO WELL LOCATION CERTIFICATE FOR EXISTING IMPROVEMENTS WITHIN 500' OF THE WELL PAD.
- WELL FOOTAGES ARE MEASURED AT RIGHT ANGLES TO THE SECTION LINES.
- THE BOTTOM OF HOLE BEARS S01°18'50"E, 10873' FROM THE HEEL LOCATION.

## WELL PAD - CLELAND 11-15HZ

CLELAND 15-1HZ  
WELL LOCATION CERTIFICATE  
1729' FSL & 1978' FWL NESW (SURFACE)  
350' FSL & 27' FWL SWSW (HEEL)  
LOCATED IN SECTION 15, WELD COUNTY, COLORADO  
50' FSL & 177' FWL SWSW (BOTTOM)  
LOCATED IN SECTION 27  
T1N, R68W, 6TH P.M.  
BROOMFIELD COUNTY, COLORADO

**Kerr-McGee Oil &  
Gas Onshore L.P.**  
1099 18th Street  
Denver, Colorado 80202



## CONSULTING, LLC

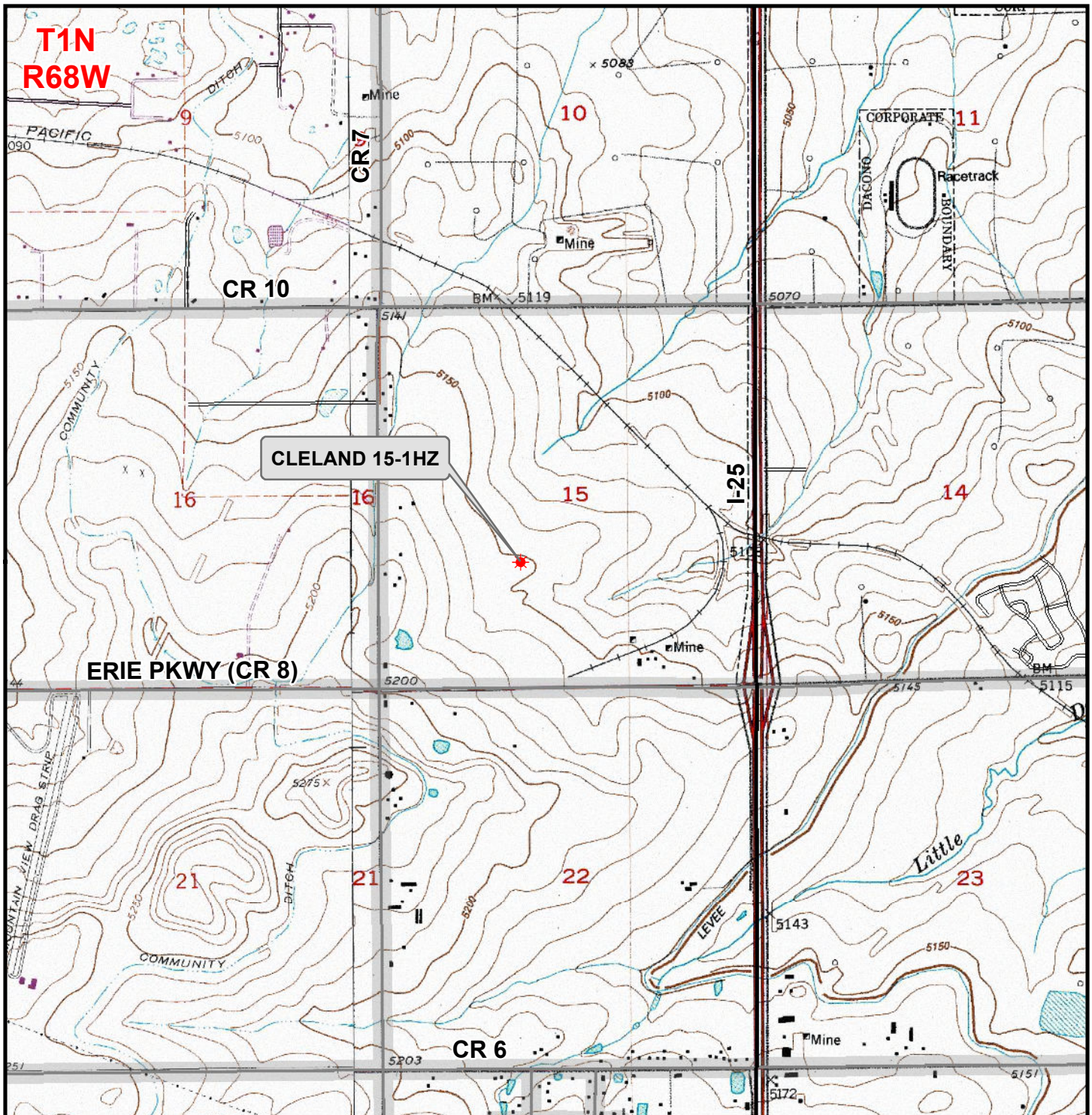
SHERIDAN OFFICE  
1095 Saberton Avenue  
Sheridan, Wyoming 82801  
Phone 307-674-0609

LOVELAND OFFICE  
6706 North Franklin Avenue  
Loveland, Colorado 80538  
Phone 970-776-4331

DRAFTED BY:	LMO	CHECKED BY:	RKF	SHEET NO:
DATE DRAFTED:	3/25/19	DATE SURVEYED:	3/19/19	2
REVISED:		FILE NAME:	15-108	2 OF 3

## C:\ANADARKO\2015\_108\_CLELAND\_T1N\_R68W\_15\PLATS\CLELAND 11-15H PLATS.dwg, 3/25/2019 3:43:54 PM, randy





### Legend

- ★ Well - Proposed   
  Road - Primitive - Existing   
  Road - County - Existing  
 Road - Improved - Existing   
 Road - Highway - Existing

**WELL PAD - CLELAND 11-15HZ**  
**GENERAL LOCATION MAP**  
**CLELAND 15-1HZ**  
**LOCATED IN SECTION 15**  
**T1N, R68W, 6th P.M.**  
**WELD COUNTY, COLORADO**

**Kerr-McGee Oil &  
Gas Onshore L.P.**  
 1099 18th Street  
 Denver, Colorado 80202



### CONSULTING, LLC

**SHERIDAN OFFICE**    **LOVELAND OFFICE**  
 1095 Saberton Avenue    6706 North Franklin Avenue  
 Sheridan, Wyoming 82801    Loveland, Colorado 80538  
 Phone 307-674-0609    Phone 970-776-4331



SCALE: 1" = 2,000ft

NAD83 CO-Nft

DRAWN: DP

DATE: 4 Apr 2019

REVISED:

DATE: