



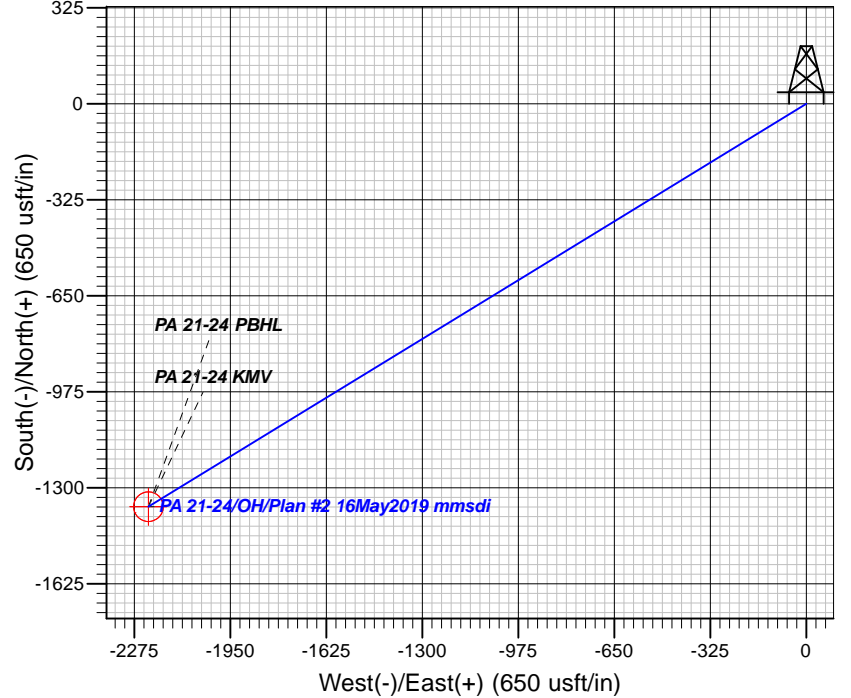
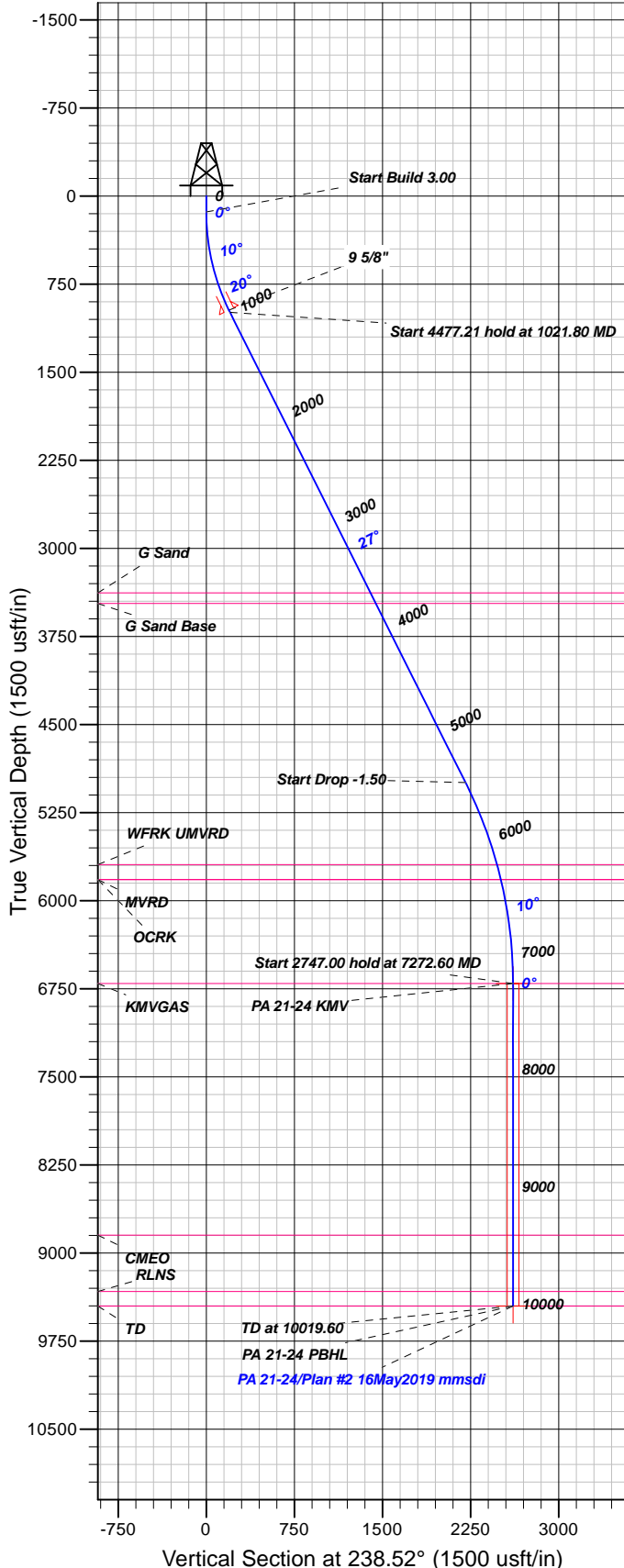
Azimuths to True North
Magnetic North: 9.32°

Magnetic Field
Strength: 51491.8snT
Dip Angle: 65.75°
Date: 5/2/2019
Model: HDGM

Well Details: PA 21-24

GL 6571.1 & RKB 24' @ 6595.10usft (H&P 318)

+N/-S	+E/-W	Northing	Easting	Latitude	Longitude	Slot
0.00	0.00	1623755.80	2311249.10	39.5205776	-107.9417906	PA 21-24 (A3)



FORMATION TOP DETAILS

TVDPth	MDPath	Formation
3378.00	3692.26	G Sand
3467.00	3791.80	G Sand Base
5692.00	6248.37	WFRK UMVRD
5820.00	6380.52	OHCRK
5820.00	6380.52	MVRD
6704.00	7272.60	KMGAS
8846.00	9414.60	CMEQ
9326.00	9894.60	RLNS
9451.00	10019.60	TD

Plan: Plan #2 16May2019 mmsdi

11:56, May 20 2019
Created By: Mel Mireles

PROJECT DETAILS: Garfield County, CO NAD83

Geodetic System: US State Plane 1983
Datum: North American Datum 1983
Ellipsoid: GRS 1980
Zone: Colorado Central Zone

System Datum: Mean Sea Level

CASING DETAILS

TVD	MD	Name	Size
970.73	1000.00	9 5/8"	9.62

SECTION DETAILS

Sec	MD	Inc	Azi	TVD	+N/-S	+E/-W	Dleg	TFace	VFace	Target
1	0.00	0.00	0.00	0.00	0.00	0.00	0.00	0.00	0.00	
2	135.00	0.00	0.00	135.00	0.00	0.00	0.00	0.00	0.00	
3	1021.80	26.60	238.52	990.28	-105.61	-172.44	3.00	238.52	202.21	
4	5499.01	26.60	238.52	4993.45	-1152.73	-1882.27	0.00	0.00	2207.20	
5	7272.60	0.00	0.00	6704.00	-1363.95	-2227.15	1.50	180.00	2611.62	PA 21-24 KMGV
6	10019.60	0.00	0.00	9451.00	-1363.95	-2227.15	0.00	0.00	2611.62	PA 21-24 PBHL

DESIGN TARGET DETAILS

Name	TVD	+N/-S	+E/-W	Northing	Easting	Latitude	Longitude	Shape
PA 21-24 KMGV	6704.00	-1363.95	-2227.15	1622452.20	2308986.10	39.5168328	-107.9496850	Circle (Radius: 50.00)
- plan hits target center								
PA 21-24 PBHL	9451.00	-1363.95	-2227.15	1622452.20	2308986.10	39.5168328	-107.9496850	Point
- plan hits target center								



TEP Rocky Mountain LLC

Garfield County, CO NAD83

PA 44-13 Pad

PA 21-24 - Slot PA 21-24 (A3)

OH

Plan: Plan #2 16May2019 mmsdi

Standard Planning Report

20 May, 2019



Database:	Grand Junction District	Local Co-ordinate Reference	Well PA 21-24 - Slot PA 21-24 (A3)
Company:	TEP Rocky Mountain LLC	TVD Reference:	GL 6571.1 & RKB 24' @ 6595.10usft (H&P 318)
Project:	Garfield County, CO NAD83	MD Reference:	GL 6571.1 & RKB 24' @ 6595.10usft (H&P 318)
Site:	PA 44-13 Pad	North Reference:	True
Well:	PA 21-24	Survey Calculation Method:	Minimum Curvature
Wellbore:	OH		
Design:	Plan #2 16May2019 mmsdi		

Project	Garfield County, CO NAD83		
Map System:	US State Plane 1983	System Datum:	Mean Sea Level
Geo Datum:	North American Datum 1983		
Map Zone:	Colorado Central Zone		

Site	PA 44-13 Pad			
Site Position:		Northing:	1,623,813.70 usft	Latitude: 39.5207354
From: Map		Easting:	2,311,233.50 usft	Longitude: -107.9418514
Position Uncertainty:	0.00 usft	Slot Radius:	13.20 in	Grid Convergence: -1.54 °

Well	PA 21-24 - Slot PA 21-24 (A3)			
Well Position	+N/-S	-57.46 usft	Northing:	1,623,755.80 usft
	+E/-W	17.15 usft	Easting:	2,311,249.10 usft
Position Uncertainty	0.00 usft		Wellhead Elevation:	0.00 usft
			Ground Level:	6,571.10 usft

Wellbore	OH				
Magnetics	Model Name	Sample Date	Declination (°)	Dip Angle (°)	Field Strength (nT)
	HDGM	5/2/2019	9.32	65.75	51,492

Design	Plan #2 16May2019 mmsdi			
Audit Notes:				
Version:	Phase:	PLAN	Tie On Depth:	0.00
Vertical Section:	Depth From (TVD) (usft)	+N/-S (usft)	+E/-W (usft)	Direction (°)
	0.00	0.00	0.00	238.52

Plan Sections										
Measured Depth (usft)	Inclination (°)	Azimuth (°)	Vertical Depth (usft)	+N/-S (usft)	+E/-W (usft)	Dogleg Rate (°/100usft)	Build Rate (°/100usft)	Turn Rate (°/100usft)	TFO (°)	Target
0.00	0.00	0.00	0.00	0.00	0.00	0.00	0.00	0.00	0.00	
135.00	0.00	0.00	135.00	0.00	0.00	0.00	0.00	0.00	0.00	
1,021.80	26.60	238.52	990.28	-105.61	-172.44	3.00	3.00	0.00	238.52	
5,499.01	26.60	238.52	4,993.45	-1,152.73	-1,882.27	0.00	0.00	0.00	0.00	
7,272.60	0.00	0.00	6,704.00	-1,363.95	-2,227.15	1.50	-1.50	0.00	180.00	PA 21-24 KMV
10,019.60	0.00	0.00	9,451.00	-1,363.95	-2,227.15	0.00	0.00	0.00	0.00	PA 21-24 PBHL

Database:	Grand Junction District	Local Co-ordinate Reference	Well PA 21-24 - Slot PA 21-24 (A3)
Company:	TEP Rocky Mountain LLC	TVD Reference:	GL 6571.1 & RKB 24' @ 6595.10usft (H&P 318)
Project:	Garfield County, CO NAD83	MD Reference:	GL 6571.1 & RKB 24' @ 6595.10usft (H&P 318)
Site:	PA 44-13 Pad	North Reference:	True
Well:	PA 21-24	Survey Calculation Method:	Minimum Curvature
Wellbore:	OH		
Design:	Plan #2 16May2019 mmsdi		

Planned Survey									
Measured Depth (usft)	Inclination (°)	Azimuth (°)	Vertical Depth (usft)	+N/-S (usft)	+E/-W (usft)	Vertical Section (usft)	Dogleg Rate (°/100usft)	Build Rate (°/100usft)	Turn Rate (°/100usft)
0.00	0.00	0.00	0.00	0.00	0.00	0.00	0.00	0.00	0.00
100.00	0.00	0.00	100.00	0.00	0.00	0.00	0.00	0.00	0.00
135.00	0.00	0.00	135.00	0.00	0.00	0.00	0.00	0.00	0.00
Start Build 3.00									
200.00	1.95	238.52	199.99	-0.58	-0.94	1.11	3.00	3.00	0.00
300.00	4.95	238.52	299.79	-3.72	-6.07	7.12	3.00	3.00	0.00
400.00	7.95	238.52	399.15	-9.59	-15.65	18.36	3.00	3.00	0.00
500.00	10.95	238.52	497.78	-18.16	-29.65	34.77	3.00	3.00	0.00
600.00	13.95	238.52	595.42	-29.42	-48.04	56.33	3.00	3.00	0.00
700.00	16.95	238.52	691.79	-43.33	-70.75	82.97	3.00	3.00	0.00
800.00	19.95	238.52	786.64	-59.86	-97.74	114.61	3.00	3.00	0.00
900.00	22.95	238.52	879.71	-78.95	-128.92	151.17	3.00	3.00	0.00
1,000.00	25.95	238.52	970.73	-100.57	-164.21	192.56	3.00	3.00	0.00
9 5/8"									
1,021.80	26.60	238.52	990.28	-105.61	-172.44	202.21	3.00	3.00	0.00
Start 4477.21 hold at 1021.80 MD									
1,100.00	26.60	238.52	1,060.20	-123.90	-202.31	237.23	0.00	0.00	0.00
1,200.00	26.60	238.52	1,149.61	-147.28	-240.50	282.01	0.00	0.00	0.00
1,300.00	26.60	238.52	1,239.02	-170.67	-278.69	326.79	0.00	0.00	0.00
1,400.00	26.60	238.52	1,328.43	-194.06	-316.87	371.58	0.00	0.00	0.00
1,500.00	26.60	238.52	1,417.85	-217.45	-355.06	416.36	0.00	0.00	0.00
1,600.00	26.60	238.52	1,507.26	-240.84	-393.25	461.14	0.00	0.00	0.00
1,700.00	26.60	238.52	1,596.67	-264.22	-431.44	505.92	0.00	0.00	0.00
1,800.00	26.60	238.52	1,686.08	-287.61	-469.63	550.70	0.00	0.00	0.00
1,900.00	26.60	238.52	1,775.50	-311.00	-507.82	595.49	0.00	0.00	0.00
2,000.00	26.60	238.52	1,864.91	-334.39	-546.01	640.27	0.00	0.00	0.00
2,100.00	26.60	238.52	1,954.32	-357.78	-584.20	685.05	0.00	0.00	0.00
2,200.00	26.60	238.52	2,043.73	-381.16	-622.39	729.83	0.00	0.00	0.00
2,300.00	26.60	238.52	2,133.14	-404.55	-660.58	774.62	0.00	0.00	0.00
2,400.00	26.60	238.52	2,222.56	-427.94	-698.77	819.40	0.00	0.00	0.00
2,500.00	26.60	238.52	2,311.97	-451.33	-736.96	864.18	0.00	0.00	0.00
2,600.00	26.60	238.52	2,401.38	-474.72	-775.15	908.96	0.00	0.00	0.00
2,700.00	26.60	238.52	2,490.79	-498.10	-813.34	953.74	0.00	0.00	0.00
2,800.00	26.60	238.52	2,580.21	-521.49	-851.53	998.53	0.00	0.00	0.00
2,900.00	26.60	238.52	2,669.62	-544.88	-889.72	1,043.31	0.00	0.00	0.00
3,000.00	26.60	238.52	2,759.03	-568.27	-927.91	1,088.09	0.00	0.00	0.00
3,100.00	26.60	238.52	2,848.44	-591.66	-966.10	1,132.87	0.00	0.00	0.00
3,200.00	26.60	238.52	2,937.86	-615.04	-1,004.29	1,177.65	0.00	0.00	0.00
3,300.00	26.60	238.52	3,027.27	-638.43	-1,042.48	1,222.44	0.00	0.00	0.00
3,400.00	26.60	238.52	3,116.68	-661.82	-1,080.67	1,267.22	0.00	0.00	0.00
3,500.00	26.60	238.52	3,206.09	-685.21	-1,118.85	1,312.00	0.00	0.00	0.00
3,600.00	26.60	238.52	3,295.50	-708.60	-1,157.04	1,356.78	0.00	0.00	0.00
3,692.26	26.60	238.52	3,378.00	-730.17	-1,192.28	1,398.10	0.00	0.00	0.00
G Sand									
3,700.00	26.60	238.52	3,384.92	-731.98	-1,195.23	1,401.56	0.00	0.00	0.00
3,791.80	26.60	238.52	3,467.00	-753.45	-1,230.29	1,442.68	0.00	0.00	0.00
G Sand Base									
3,800.00	26.60	238.52	3,474.33	-755.37	-1,233.42	1,446.35	0.00	0.00	0.00
3,900.00	26.60	238.52	3,563.74	-778.76	-1,271.61	1,491.13	0.00	0.00	0.00
4,000.00	26.60	238.52	3,653.15	-802.15	-1,309.80	1,535.91	0.00	0.00	0.00

Database:	Grand Junction District	Local Co-ordinate Reference	Well PA 21-24 - Slot PA 21-24 (A3)
Company:	TEP Rocky Mountain LLC	TVD Reference:	GL 6571.1 & RKB 24' @ 6595.10usft (H&P 318)
Project:	Garfield County, CO NAD83	MD Reference:	GL 6571.1 & RKB 24' @ 6595.10usft (H&P 318)
Site:	PA 44-13 Pad	North Reference:	True
Well:	PA 21-24	Survey Calculation Method:	Minimum Curvature
Wellbore:	OH		
Design:	Plan #2 16May2019 mmsdi		

Planned Survey									
Measured Depth (usft)	Inclination (°)	Azimuth (°)	Vertical Depth (usft)	+N/-S (usft)	+E/-W (usft)	Vertical Section (usft)	Dogleg Rate (°/100usft)	Build Rate (°/100usft)	Turn Rate (°/100usft)
4,100.00	26.60	238.52	3,742.57	-825.54	-1,347.99	1,580.69	0.00	0.00	0.00
4,200.00	26.60	238.52	3,831.98	-848.92	-1,386.18	1,625.48	0.00	0.00	0.00
4,300.00	26.60	238.52	3,921.39	-872.31	-1,424.37	1,670.26	0.00	0.00	0.00
4,400.00	26.60	238.52	4,010.80	-895.70	-1,462.56	1,715.04	0.00	0.00	0.00
4,500.00	26.60	238.52	4,100.22	-919.09	-1,500.75	1,759.82	0.00	0.00	0.00
4,600.00	26.60	238.52	4,189.63	-942.48	-1,538.94	1,804.60	0.00	0.00	0.00
4,700.00	26.60	238.52	4,279.04	-965.86	-1,577.13	1,849.39	0.00	0.00	0.00
4,800.00	26.60	238.52	4,368.45	-989.25	-1,615.32	1,894.17	0.00	0.00	0.00
4,900.00	26.60	238.52	4,457.86	-1,012.64	-1,653.51	1,938.95	0.00	0.00	0.00
5,000.00	26.60	238.52	4,547.28	-1,036.03	-1,691.70	1,983.73	0.00	0.00	0.00
5,100.00	26.60	238.52	4,636.69	-1,059.42	-1,729.89	2,028.51	0.00	0.00	0.00
5,200.00	26.60	238.52	4,726.10	-1,082.80	-1,768.08	2,073.30	0.00	0.00	0.00
5,300.00	26.60	238.52	4,815.51	-1,106.19	-1,806.27	2,118.08	0.00	0.00	0.00
5,400.00	26.60	238.52	4,904.93	-1,129.58	-1,844.46	2,162.86	0.00	0.00	0.00
5,499.01	26.60	238.52	4,993.45	-1,152.73	-1,882.27	2,207.20	0.00	0.00	0.00
Start Drop -1.50									
5,500.00	26.59	238.52	4,994.34	-1,152.97	-1,882.64	2,207.64	1.50	-1.50	0.00
5,600.00	25.09	238.52	5,084.34	-1,175.73	-1,919.81	2,251.23	1.50	-1.50	0.00
5,700.00	23.59	238.52	5,175.45	-1,197.25	-1,954.96	2,292.44	1.50	-1.50	0.00
5,800.00	22.09	238.52	5,267.61	-1,217.52	-1,988.06	2,331.25	1.50	-1.50	0.00
5,900.00	20.59	238.52	5,360.75	-1,236.53	-2,019.09	2,367.64	1.50	-1.50	0.00
6,000.00	19.09	238.52	5,454.81	-1,254.25	-2,048.03	2,401.58	1.50	-1.50	0.00
6,100.00	17.59	238.52	5,549.73	-1,270.68	-2,074.86	2,433.04	1.50	-1.50	0.00
6,200.00	16.09	238.52	5,645.44	-1,285.81	-2,099.56	2,462.01	1.50	-1.50	0.00
6,248.37	15.36	238.52	5,692.00	-1,292.66	-2,110.74	2,475.12	1.50	-1.50	0.00
WFRK UMVRD									
6,300.00	14.59	238.52	5,741.87	-1,299.63	-2,122.12	2,488.46	1.50	-1.50	0.00
6,380.52	13.38	238.52	5,820.00	-1,309.79	-2,138.71	2,507.92	1.50	-1.50	0.00
OCRK - MVRD									
6,400.00	13.09	238.52	5,838.97	-1,312.12	-2,142.52	2,512.38	1.50	-1.50	0.00
6,500.00	11.59	238.52	5,936.65	-1,323.28	-2,160.74	2,533.75	1.50	-1.50	0.00
6,600.00	10.09	238.52	6,034.87	-1,333.10	-2,176.78	2,552.55	1.50	-1.50	0.00
6,700.00	8.59	238.52	6,133.54	-1,341.57	-2,190.62	2,568.78	1.50	-1.50	0.00
6,800.00	7.09	238.52	6,232.60	-1,348.70	-2,202.25	2,582.42	1.50	-1.50	0.00
6,900.00	5.59	238.52	6,331.99	-1,354.46	-2,211.66	2,593.46	1.50	-1.50	0.00
7,000.00	4.09	238.52	6,431.63	-1,358.87	-2,218.86	2,601.89	1.50	-1.50	0.00
7,100.00	2.59	238.52	6,531.46	-1,361.91	-2,223.82	2,607.72	1.50	-1.50	0.00
7,200.00	1.09	238.52	6,631.40	-1,363.59	-2,226.56	2,610.93	1.50	-1.50	0.00
7,272.60	0.00	0.00	6,704.00	-1,363.95	-2,227.15	2,611.62	1.50	-1.50	0.00
Start 2747.00 hold at 7272.60 MD - KMGAS - PA 21-24 KMV									
7,300.00	0.00	0.00	6,731.40	-1,363.95	-2,227.15	2,611.62	0.00	0.00	0.00
7,400.00	0.00	0.00	6,831.40	-1,363.95	-2,227.15	2,611.62	0.00	0.00	0.00
7,500.00	0.00	0.00	6,931.40	-1,363.95	-2,227.15	2,611.62	0.00	0.00	0.00
7,600.00	0.00	0.00	7,031.40	-1,363.95	-2,227.15	2,611.62	0.00	0.00	0.00
7,700.00	0.00	0.00	7,131.40	-1,363.95	-2,227.15	2,611.62	0.00	0.00	0.00
7,800.00	0.00	0.00	7,231.40	-1,363.95	-2,227.15	2,611.62	0.00	0.00	0.00
7,900.00	0.00	0.00	7,331.40	-1,363.95	-2,227.15	2,611.62	0.00	0.00	0.00
8,000.00	0.00	0.00	7,431.40	-1,363.95	-2,227.15	2,611.62	0.00	0.00	0.00
8,100.00	0.00	0.00	7,531.40	-1,363.95	-2,227.15	2,611.62	0.00	0.00	0.00
8,200.00	0.00	0.00	7,631.40	-1,363.95	-2,227.15	2,611.62	0.00	0.00	0.00
8,300.00	0.00	0.00	7,731.40	-1,363.95	-2,227.15	2,611.62	0.00	0.00	0.00

Database:	Grand Junction District	Local Co-ordinate Reference	Well PA 21-24 - Slot PA 21-24 (A3)
Company:	TEP Rocky Mountain LLC	TVD Reference:	GL 6571.1 & RKB 24' @ 6595.10usft (H&P 318)
Project:	Garfield County, CO NAD83	MD Reference:	GL 6571.1 & RKB 24' @ 6595.10usft (H&P 318)
Site:	PA 44-13 Pad	North Reference:	True
Well:	PA 21-24	Survey Calculation Method:	Minimum Curvature
Wellbore:	OH		
Design:	Plan #2 16May2019 mmsdi		

Planned Survey									
Measured Depth (usft)	Inclination (°)	Azimuth (°)	Vertical Depth (usft)	+N/-S (usft)	+E/-W (usft)	Vertical Section (usft)	Dogleg Rate (°/100usft)	Build Rate (°/100usft)	Turn Rate (°/100usft)
8,400.00	0.00	0.00	7,831.40	-1,363.95	-2,227.15	2,611.62	0.00	0.00	0.00
8,500.00	0.00	0.00	7,931.40	-1,363.95	-2,227.15	2,611.62	0.00	0.00	0.00
8,600.00	0.00	0.00	8,031.40	-1,363.95	-2,227.15	2,611.62	0.00	0.00	0.00
8,700.00	0.00	0.00	8,131.40	-1,363.95	-2,227.15	2,611.62	0.00	0.00	0.00
8,800.00	0.00	0.00	8,231.40	-1,363.95	-2,227.15	2,611.62	0.00	0.00	0.00
8,900.00	0.00	0.00	8,331.40	-1,363.95	-2,227.15	2,611.62	0.00	0.00	0.00
9,000.00	0.00	0.00	8,431.40	-1,363.95	-2,227.15	2,611.62	0.00	0.00	0.00
9,100.00	0.00	0.00	8,531.40	-1,363.95	-2,227.15	2,611.62	0.00	0.00	0.00
9,200.00	0.00	0.00	8,631.40	-1,363.95	-2,227.15	2,611.62	0.00	0.00	0.00
9,300.00	0.00	0.00	8,731.40	-1,363.95	-2,227.15	2,611.62	0.00	0.00	0.00
9,400.00	0.00	0.00	8,831.40	-1,363.95	-2,227.15	2,611.62	0.00	0.00	0.00
9,414.60	0.00	0.00	8,846.00	-1,363.95	-2,227.15	2,611.62	0.00	0.00	0.00
CMEO									
9,500.00	0.00	0.00	8,931.40	-1,363.95	-2,227.15	2,611.62	0.00	0.00	0.00
9,600.00	0.00	0.00	9,031.40	-1,363.95	-2,227.15	2,611.62	0.00	0.00	0.00
9,700.00	0.00	0.00	9,131.40	-1,363.95	-2,227.15	2,611.62	0.00	0.00	0.00
9,800.00	0.00	0.00	9,231.40	-1,363.95	-2,227.15	2,611.62	0.00	0.00	0.00
9,894.60	0.00	0.00	9,326.00	-1,363.95	-2,227.15	2,611.62	0.00	0.00	0.00
RLNS									
9,900.00	0.00	0.00	9,331.40	-1,363.95	-2,227.15	2,611.62	0.00	0.00	0.00
10,000.00	0.00	0.00	9,431.40	-1,363.95	-2,227.15	2,611.62	0.00	0.00	0.00
10,019.60	0.00	0.00	9,451.00	-1,363.95	-2,227.15	2,611.62	0.00	0.00	0.00
TD at 10019.60 - PA 21-24 PBHL									

Design Targets									
Target Name	Dip Angle (°)	Dip Dir. (°)	TVD (usft)	+N/-S (usft)	+E/-W (usft)	Northing (usft)	Easting (usft)	Latitude	Longitude
- hit/miss target									
- Shape									
PA 21-24 KMV	0.00	0.00	6,704.00	-1,363.95	-2,227.15	1,622,452.20	2,308,986.10	39.5168328	-107.9496851
- plan hits target center									
- Circle (radius 50.00)									
PA 21-24 PBHL	0.00	0.00	9,451.00	-1,363.95	-2,227.15	1,622,452.20	2,308,986.10	39.5168328	-107.9496851
- plan hits target center									
- Point									

Casing Points					
Measured Depth (usft)	Vertical Depth (usft)	Name	Casing Diameter (in)	Hole Diameter (in)	
1,000.00	970.73	9 5/8"	9.62	12.25	

Database:	Grand Junction District	Local Co-ordinate Reference	Well PA 21-24 - Slot PA 21-24 (A3)
Company:	TEP Rocky Mountain LLC	TVD Reference:	GL 6571.1 & RKB 24' @ 6595.10usft (H&P 318)
Project:	Garfield County, CO NAD83	MD Reference:	GL 6571.1 & RKB 24' @ 6595.10usft (H&P 318)
Site:	PA 44-13 Pad	North Reference:	True
Well:	PA 21-24	Survey Calculation Method:	Minimum Curvature
Wellbore:	OH		
Design:	Plan #2 16May2019 mmsdi		

Formations					
Measured Depth (usft)	Vertical Depth (usft)	Name	Lithology	Dip (°)	Dip Direction (°)
3,692.26	3,378.00	G Sand		0.00	0.00
3,791.80	3,467.00	G Sand Base		0.00	0.00
6,248.37	5,692.00	WFRK UMVRD		0.00	0.00
6,380.52	5,820.00	OCRK		0.00	0.00
6,380.52	5,820.00	MVRD		0.00	0.00
7,272.60	6,704.00	KMVGAS		0.00	0.00
9,414.60	8,846.00	CME0		0.00	0.00
9,894.60	9,326.00	RLNS		0.00	0.00
10,019.60	9,451.00	TD		0.00	0.00

Plan Annotations				
Measured Depth (usft)	Vertical Depth (usft)	Local Coordinates		Comment
		+N/-S (usft)	+E/-W (usft)	
135.00	135.00	0.00	0.00	Start Build 3.00
1,021.80	990.28	-105.61	-172.44	Start 4477.21 hold at 1021.80 MD
5,499.01	4,993.45	-1,152.73	-1,882.27	Start Drop -1.50
7,272.60	6,704.00	-1,363.95	-2,227.15	Start 2747.00 hold at 7272.60 MD
10,019.60	9,451.00	-1,363.95	-2,227.15	TD at 10019.60