



Kerr-McGee Oil & Gas Onshore LP

A subsidiary of Anadarko Petroleum Corporation

1099 18th Street
Denver, CO 80202
720-929-6000

June 10, 2019

Jeff Robbins
Director, Colorado Oil and Gas Conservation Commission
Department of Natural Resources
The Chancery Building
1120 Lincoln Street, Suite 801
Denver, CO 80203

Re: 30 Day Certification Letter - 318A.e

CLELAND 15-3HZ (Doc No. 402011006)

Township 1 North, Range 68 West

Section 15: NESW

Unit Acreage: 800 Acres

Proposed Spacing Unit:

01N68W SEC 15: S2SW;

01N68W SEC 22: W2;

01N68W SEC 27: W2;

01N68W SEC 34: N2NW

Weld County, Colorado

Dear Director Robbins:

Kerr-McGee Oil and Gas Onshore LP ("KMG") hereby certifies that a thirty (30) day notice has been given by certified mail to all mineral owners in the proposed wellbore spacing unit. We have not received any objections to such well location, proposed spacing unit, or additional producing formation. KMG hereby respectfully requests approval of this boundary well.

If you have any questions or issues regarding this permit, please contact me at (720) 929-3242.

Sincerely,

Kerr-McGee Oil and Gas Onshore LP

A handwritten signature in black ink, appearing to be 'EH' or similar initials, written in a cursive style.

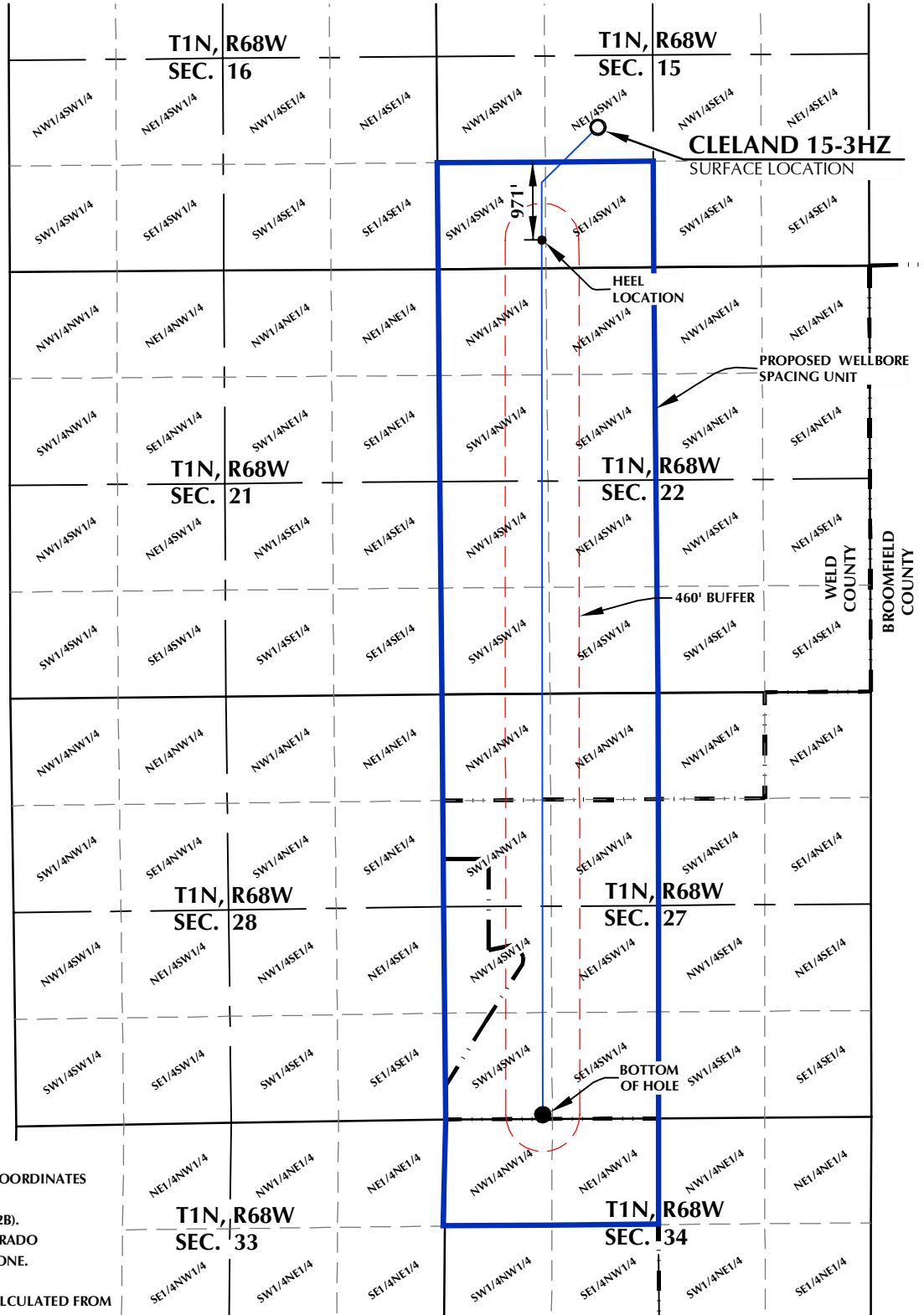
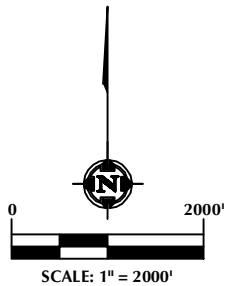
Erin Hampe
Regulatory Analyst

Enclosure

DISTANCE FROM COMPLETED
PORTION OF WELLBORE TO
NEAREST UNIT BOUNDARY= 971'

CLELAND 15-3HZ WELLBORE SPACING UNIT

SURFACE LOCATION: NAD 83
GROUND ELEVATION= 5150.5'
LATITUDE= 40.048727°
LONGITUDE= -104.992050°
LATITUDE= 40°02'55.418"
LONGITUDE= -104°59'31.380"
HEEL LOCATION: NAD 83
LATITUDE= 40.044881°
LONGITUDE= -104.994562°
LATITUDE= 40°02'41.571"
LONGITUDE= -104°59'40.423"
BOTTOM HOLE LOCATION: NAD 83
LATITUDE= 40.015028°
LONGITUDE= -104.994745°
LATITUDE= 40°00'54.101"
LONGITUDE= -104°59'41.082"



NOTES:

1. DRAWING LATITUDE AND LONGITUDE COORDINATES ARE NAD 83 (2011)(EPOCH:2010).
2. ELEVATION BASED ON NAVD88 (GEOID12B).
3. BASIS OF BEARING DERIVED FROM COLORADO COORDINATE SYSTEM OF 1983 NORTH ZONE.
4. ALL MEASURED DISTANCES ARE GRID.
COMBINED SCALE FACTOR: .99972060 CALCULATED FROM THE CENTER 1/4 CORNER OF SECTION 15, T1N, R68W.

WELL PAD - CLELAND 11-15HZ

CLELAND 15-3HZ
WELLBORE SPACING UNIT
1750' FSL & 1999' FWL NESW (SURFACE)
350' FSL & 1295' FWL SWSW (HEEL)
LOCATED IN SECTION 15, WELD COUNTY, COLORADO
50' FSL & 1206' FWL SWSW (BOTTOM)
LOCATED IN SECTION 27
T1N, R68W, 6TH P.M.
BROOMFIELD COUNTY, COLORADO

**Kerr-McGee Oil &
Gas Onshore L.P.**
1099 18th Street
Denver, Colorado 80202



CONSULTING, LLC

SHERIDAN OFFICE
1095 Saberton Avenue
Sheridan, Wyoming 82801
Phone 307-674-0609

LOVELAND OFFICE
6706 North Franklin Avenue
Loveland, Colorado 80538
Phone 970-776-4331

DRAFTED BY:	LMO	CHECKED BY:	RKF
DATE DRAFTED:	3/25/19	DATE SURVEYED:	3/19/19
REVISED:		FILE NAME:	15-108