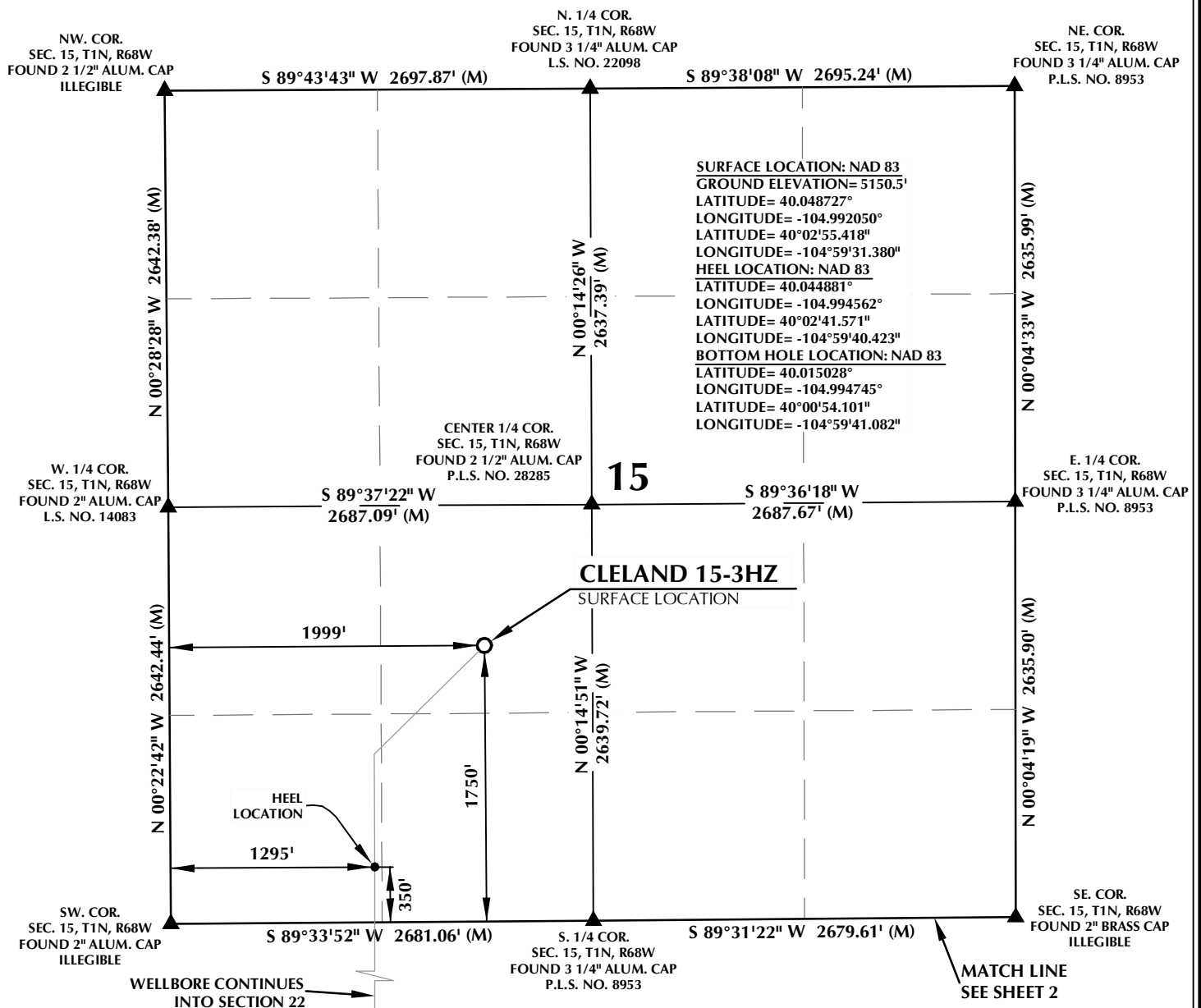


T1N, R68W



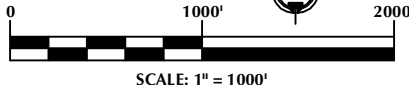
CERTIFICATE OF SURVEYOR:

THIS IS TO CERTIFY THAT THE ABOVE PLAT WAS PREPARED FROM FIELD NOTES OF ACTUAL SURVEYS MADE BY ME OR UNDER MY SUPERVISION AND THAT THE SAME ARE TRUE AND CORRECT TO THE BEST OF MY KNOWLEDGE AND BELIEF. THIS CERTIFICATE DOES NOT REPRESENT A LAND SURVEY PLAT OR IMPROVEMENT SURVEY PLAT AS DEFINED BY C.R.S. 38-5-102 AND CANNOT BE RELIED UPON TO DETERMINE OWNERSHIP.

Randall K. French
 RANDALL K. FRENCH
 PROFESSIONAL LAND SURVEYOR
 COLORADO REGISTRATION NUMBER 38512
 3/25/19

NOTICE: ACCORDING TO COLORADO STATE LAW YOU MUST TAKE LEGAL ACTION BASED UPON ANY DEFECT IN THIS SURVEY WITHIN THREE YEARS AFTER YOU FIRST DISCOVER SUCH DEFECT. IN NO EVENT MAY ANY ACTION BASED UPON ANY DEFECT IN THIS SURVEY BE COMMENCED MORE THAN TEN YEARS FROM THE DATE ON THE CERTIFICATION SHOWN HEREON.

NOTE: MAGNETIC NORTH IS CURRENT AS OF 3/19/2019. MAGNETIC NORTH CHANGES WEST 0°06' PER YEAR.



NOTES:

- ▲ INDICATES SECTION CORNER.
- INDICATES CALCULATED CORNER.
- ELEVATION BASED ON NAVD88 (GEOID12B).
- BASIS OF BEARING DERIVED FROM COLORADO COORDINATE SYSTEM OF 1983 NORTH ZONE.
- ALL MEASURED DISTANCES ARE GRID. COMBINED SCALE FACTOR: .99972060 CALCULATED FROM THE CENTER 1/4 CORNER OF SECTION 15, T1N, R68W. OPERATOR: TRAVIS HOLLAND / PDOP = 1.4.
- SEE ADDENDUM TO WELL LOCATION CERTIFICATE FOR EXISTING IMPROVEMENTS WITHIN 500' OF THE WELL PAD.
- WELL FOOTAGES ARE MEASURED AT RIGHT ANGLES TO THE SECTION LINES.
- THE BOTTOM OF HOLE BEARS S00°03'23"E, 10875' FROM THE HEEL LOCATION.

WELL PAD - CLELAND 11-15HZ

CLELAND 15-3HZ
WELL LOCATION CERTIFICATE
 1750' FSL & 1999' FWL NESW (SURFACE)
 350' FSL & 1295' FWL SWSW (HEEL)
 LOCATED IN SECTION 15, WELD COUNTY, COLORADO
 50' FSL & 1206' FWL SWSW (BOTTOM)
 LOCATED IN SECTION 27
 T1N, R68W, 6TH P.M.
 BROOMFIELD COUNTY, COLORADO

Kerr-McGee Oil & Gas Onshore L.P.
 1099 18th Street
 Denver, Colorado 80202



CONSULTING, LLC

SHERIDAN OFFICE
 1095 Saberton Avenue
 Sheridan, Wyoming 82801
 Phone 307-674-0609

LOVELAND OFFICE
 6706 North Franklin Avenue
 Loveland, Colorado 80538
 Phone 970-776-4331

DRAFTED BY:	LMO	CHECKED BY:	RKF	SHEET NO:
DATE DRAFTED:	3/25/19	DATE SURVEYED:	3/19/19	1
REVISED:		FILE NAME:	15-108	1 OF 3

T1N, R68W

NW. COR.
SEC. 22, T1N, R68W
FOUND 2" ALUM. CAP
ILLEGIBLE

S 89°33'52" W 2681.06' (M)

S 89°31'22" W 2679.61' (M)

MATCH LINE
SEE SHEET 1

N. 1/4 COR.
SEC. 22, T1N, R68W
FOUND 3 1/4" ALUM. CAP
P.L.S. NO. 8953

NE. COR.
SEC. 22, T1N, R68W
FOUND 2" BRASS CAP
ILLEGIBLE

SURFACE LOCATION: NAD 83
GROUND ELEVATION= 5150.5'
LATITUDE= 40.048727°
LONGITUDE= -104.992050°
LATITUDE= 40°02'55.418"
LONGITUDE= -104°59'31.380"
HEEL LOCATION: NAD 83
LATITUDE= 40.044881°
LONGITUDE= -104.994562°
LATITUDE= 40°02'41.571"
LONGITUDE= -104°59'40.423"
BOTTOM HOLE LOCATION: NAD 83
LATITUDE= 40.015028°
LONGITUDE= -104.994745°
LATITUDE= 40°00'54.101"
LONGITUDE= -104°59'41.082"

CN. 1/16 COR.
SEC. 22, T1N, R68W
FOUND 2 1/2" ALUM. CAP
L.S. NO. 29414

N. 1/16 COR.
SEC. 21 & SEC. 22
T1N, R68W
FOUND 2 1/2" ALUM. CAP
ILLEGIBLE

N. 1/16 COR.
SEC. 22 & SEC. 23
T1N, R68W
FOUND 2 1/2" ALUM. CAP
P.L.S. NO. 24670

22

W. 1/4 COR.
SEC. 22, T1N, R68W
FOUND 2" ALUM. CAP
L.S. NO. 25937

S 89°34'46" W
2687.19' (M)

S 89°35'16" W
2661.40' (M)

CENTER 1/4 COR.
SEC. 22, T1N, R68W
FOUND 3 1/4" ALUM. CAP
L.S. NO. 25937

E. 1/4 COR.
SEC. 22 & SEC. 23, T1N, R68W
FOUND 3 1/4" ALUM. CAP
P.L.S. NO. 8953

S. 1/16 COR.
SEC. 21 & SEC. 22
T1N, R68W
FOUND 2" ALUM. CAP
L.S. NO. 25937

S 00°03'23" E 10875' GRID
S 00°16'19" W TRUE
S 07°53'23" E MAGNETIC

S. 1/16 COR.
SEC. 22 & SEC. 23, T1N, R68W
FOUND 3 1/4" ALUM. CAP
P.L.S. NO. 8953

E. 1/16 COR.
SEC. 22 & SEC. 27
T1N, R68W
FOUND 2" ALUM. CAP
ILLEGIBLE

SW. COR.
SEC. 22, T1N, R68W
FOUND 2" ALUM. CAP
L.S. NO. 25937

S 89°34'55" W 2693.01' (M)

S. 1/4 COR.
SEC. 22, T1N, R68W
FOUND 2" ALUM. CAP
ILLEGIBLE

S 89°40'26" W
1321.47' (M)

S 89°40'02" W
1321.53' (M)

SE. COR.
SEC. 22, T1N, R68W
FOUND 3 1/4" ALUM. CAP
P.L.S. NO. 8953

WELLBORE CONTINUES
INTO SECTION 27

WELD COUNTY
BROOMFIELD COUNTY

MATCH LINE
SEE SHEET 3

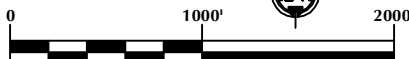
CERTIFICATE OF SURVEYOR:

THIS IS TO CERTIFY THAT THE ABOVE PLAT WAS PREPARED FROM FIELD NOTES OF ACTUAL SURVEYS MADE BY ME OR UNDER MY SUPERVISION AND THAT THE SAME ARE TRUE AND CORRECT TO THE BEST OF MY KNOWLEDGE AND BELIEF. THIS CERTIFICATE DOES NOT REPRESENT A LAND SURVEY PLAT OR IMPROVEMENT SURVEY PLAT AS DEFINED BY C.R.S. 38-5-102 AND CANNOT BE RELIED UPON TO DETERMINE OWNERSHIP.

Randall K. French
38512
3/25/19
PROFESSIONAL LAND SURVEYOR
COLORADO REGISTRATION NUMBER 38512

NOTICE:
ACCORDING TO COLORADO STATE LAW YOU MUST TAKE LEGAL ACTION BASED UPON ANY DEFECT IN THIS SURVEY WITHIN THREE YEARS AFTER YOU FIRST DISCOVER SUCH DEFECT. IN NO EVENT MAY ANY ACTION BASED UPON ANY DEFECT IN THIS SURVEY BE COMMENCED MORE THAN TEN YEARS FROM THE DATE ON THE CERTIFICATION SHOWN HEREON.

NOTE:
MAGNETIC NORTH IS
CURRENT AS OF 3/19/2019.
MAGNETIC NORTH CHANGES
WEST 0°06' PER YEAR.



SCALE: 1" = 1000'

NOTES:

- ▲ INDICATES SECTION CORNER.
- INDICATES CALCULATED CORNER.
- ELEVATION BASED ON NAVD88 (GEOID12B).
- BASIS OF BEARING DERIVED FROM COLORADO COORDINATE SYSTEM OF 1983 NORTH ZONE.
- ALL MEASURED DISTANCES ARE GRID. COMBINED SCALE FACTOR: .99972060 CALCULATED FROM THE CENTER 1/4 CORNER OF SECTION 15, T1N, R68W. OPERATOR: TRAVIS HOLLAND / PDOP = 1.4.
- SEE ADDENDUM TO WELL LOCATION CERTIFICATE FOR EXISTING IMPROVEMENTS WITHIN 500' OF THE WELL PAD.
- WELL FOOTAGES ARE MEASURED AT RIGHT ANGLES TO THE SECTION LINES.
- THE BOTTOM OF HOLE BEARS S00°03'23"E, 10875' FROM THE HEEL LOCATION.

WELL PAD - CLELAND 11-15HZ

CLELAND 15-3HZ
WELL LOCATION CERTIFICATE
1750' FSL & 1999' FWL NESW (SURFACE)
350' FSL & 1295' FWL SWSW (HEEL)
LOCATED IN SECTION 15, WELD COUNTY, COLORADO
50' FSL & 1206' FWL SWSW (BOTTOM)
LOCATED IN SECTION 27
T1N, R68W, 6TH P.M.
BROOMFIELD COUNTY, COLORADO

**Kerr-McGee Oil &
Gas Onshore L.P.**
1099 18th Street
Denver, Colorado 80202



CONSULTING, LLC

SHERIDAN OFFICE
1095 Saberton Avenue
Sheridan, Wyoming 82801
Phone 307-674-0609

LOVELAND OFFICE
6706 North Franklin Avenue
Loveland, Colorado 80538
Phone 970-776-4331

DRAFTED BY:	LMO	CHECKED BY:	RKF	SHEET NO:
DATE DRAFTED:	3/25/19	DATE SURVEYED:	3/19/19	2
REVISED:		FILE NAME:	15-108	2 OF 3

T1N, R68W

N. 1/4 COR.

SEC. 27, T1N, R68W
FOUND 2" ALUM. CAP
ILLEGIBLES 89°40'26" W
1321.47' (M)MATCH LINE
SEE SHEET 2S 89°40'02" W
1321.53' (M)NE COR.
SEC. 27, T1N, R68W
FOUND 3 1/4" ALUM. CAP
P.L.S. NO. 8953NW COR.
SEC. 27, T1N, R68W
FOUND 2" ALUM. CAP
L.S. NO. 25937

S 89°34'55" W 2693.01' (M)

E. 1/16 COR.
SEC. 22 & SEC. 27, T1N, R68W
FOUND 2" ALUM. CAP
ILLEGIBLEN 00°00'36" E
1317.08' (M)

N 00°33'21" W 2642.83' (M)

S 00°03'23" E 10875' GRID
S 00°16'19" W TRUE
S 07°53'23" E MAGNETICN 00°05'32" W
2643.07' (M)N. 1/16 COR.
SEC. 26 & SEC. 27, T1N, R68W
FOUND 3 1/4" ALUM. CAP
ILLEGIBLEN 00°00'41" E
1322.14' (M)CENTER 1/4 COR.
SEC. 27, T1N, R68W
FOUND 2 1/2" ALUM. CAP
P.L.S. NO. 24305**27**S 89°35'12" W
2671.61' (M)S 89°35'11" W
2638.28' (M)E. 1/4 COR.
SEC. 27, T1N, R68W
FOUND 3 1/4" ALUM. CAP
P.L.S. NO. 8953

SURFACE LOCATION: NAD 83
GROUND ELEVATION= 5150.5'
LATITUDE= 40.048727°
LONGITUDE= -104.992050°
LATITUDE= 40°02'55.418"
LONGITUDE= -104°59'31.380"
HEEL LOCATION: NAD 83
LATITUDE= 40.044881°
LONGITUDE= -104.994562°
LATITUDE= 40°02'41.571"
LONGITUDE= -104°59'40.423"
BOTTOM HOLE LOCATION: NAD 83
LATITUDE= 40.015028°
LONGITUDE= -104.994745°
LATITUDE= 40°00'54.101"
LONGITUDE= -104°59'41.082"

BOTTOM OF HOLE:
50' FSL & 1206' FWLN 00°00'57" E
2645.92' (M)

N 00°06'59" W 2650.56' (M)

N 00°34'03" W 2642.11' (M)

S. 1/4 COR.
SEC. 27, T1N, R68W
FOUND 3 1/4" ALUM. CAP
ILLEGIBLESE COR.
SEC. 27, T1N, R68W
FOUND 3 1/4" ALUM. CAP
P.L.S. NO. 8953SW COR.
SEC. 27, T1N, R68W
FOUND 3 1/4" ALUM. CAP
P.L.S. NO. 13258

S 89°40'04" W 2644.69' (M)

S 89°41'16" W 2644.36' (M)

WELD COUNTY
BROOMFIELD COUNTY**CERTIFICATE OF SURVEYOR:**

THIS IS TO CERTIFY THAT THE ABOVE PLAT WAS PREPARED FROM FIELD NOTES OF ACTUAL SURVEYS MADE BY ME OR UNDER MY SUPERVISION AND THAT THE SAME ARE TRUE AND CORRECT TO THE BEST OF MY KNOWLEDGE AND BELIEF. THIS CERTIFICATE DOES NOT REPRESENT A LAND SURVEY PLAT OR IMPROVEMENT SURVEY PLAT AS DEFINED BY C.R.S. 38-5-102 AND CANNOT BE RELIED UPON TO DETERMINE OWNERSHIP.

Randall K. French
38512
3/25/19
PROFESSIONAL LAND SURVEYOR
COLORADO REGISTRATION NUMBER 38512

NOTICE:
ACCORDING TO COLORADO STATE LAW YOU MUST TAKE LEGAL ACTION BASED UPON ANY DEFECT IN THIS SURVEY WITHIN THREE YEARS AFTER YOU FIRST DISCOVER SUCH DEFECT. IN NO EVENT MAY ANY ACTION BASED UPON ANY DEFECT IN THIS SURVEY BE COMMENCED MORE THAN TEN YEARS FROM THE DATE ON THE CERTIFICATION SHOWN HEREON.

NOTE:
MAGNETIC NORTH IS
CURRENT AS OF 3/19/2019.
MAGNETIC NORTH CHANGES
WEST 0°06' PER YEAR.



SCALE: 1" = 1000'

NOTES:

- ▲ INDICATES SECTION CORNER.
- INDICATES CALCULATED CORNER.
- ELEVATION BASED ON NAVD88 (GEOID12B).
- BASIS OF BEARING DERIVED FROM COLORADO COORDINATE SYSTEM OF 1983 NORTH ZONE.
- ALL MEASURED DISTANCES ARE GRID. COMBINED SCALE FACTOR: .99972060 CALCULATED FROM THE CENTER 1/4 CORNER OF SECTION 15, T1N, R68W. OPERATOR: TRAVIS HOLLAND / PDOP = 1.4.
- SEE ADDENDUM TO WELL LOCATION CERTIFICATE FOR EXISTING IMPROVEMENTS WITHIN 500' OF THE WELL PAD.
- WELL FOOTAGES ARE MEASURED AT RIGHT ANGLES TO THE SECTION LINES.
- THE BOTTOM OF HOLE BEARS S00°03'23"E, 10875' FROM THE HEEL LOCATION.

WELL PAD - CLELAND 11-15HZ

CLELAND 15-3HZ
WELL LOCATION CERTIFICATE
1750' FSL & 1999' FWL NESW (SURFACE)
350' FSL & 1295' FWL SWSW (HEEL)
LOCATED IN SECTION 15, WELD COUNTY, COLORADO
50' FSL & 1206' FWL SWSW (BOTTOM)
LOCATED IN SECTION 27
T1N, R68W, 6TH P.M.
BROOMFIELD COUNTY, COLORADO

**Kerr-McGee Oil &
Gas Onshore L.P.**
1099 18th Street
Denver, Colorado 80202

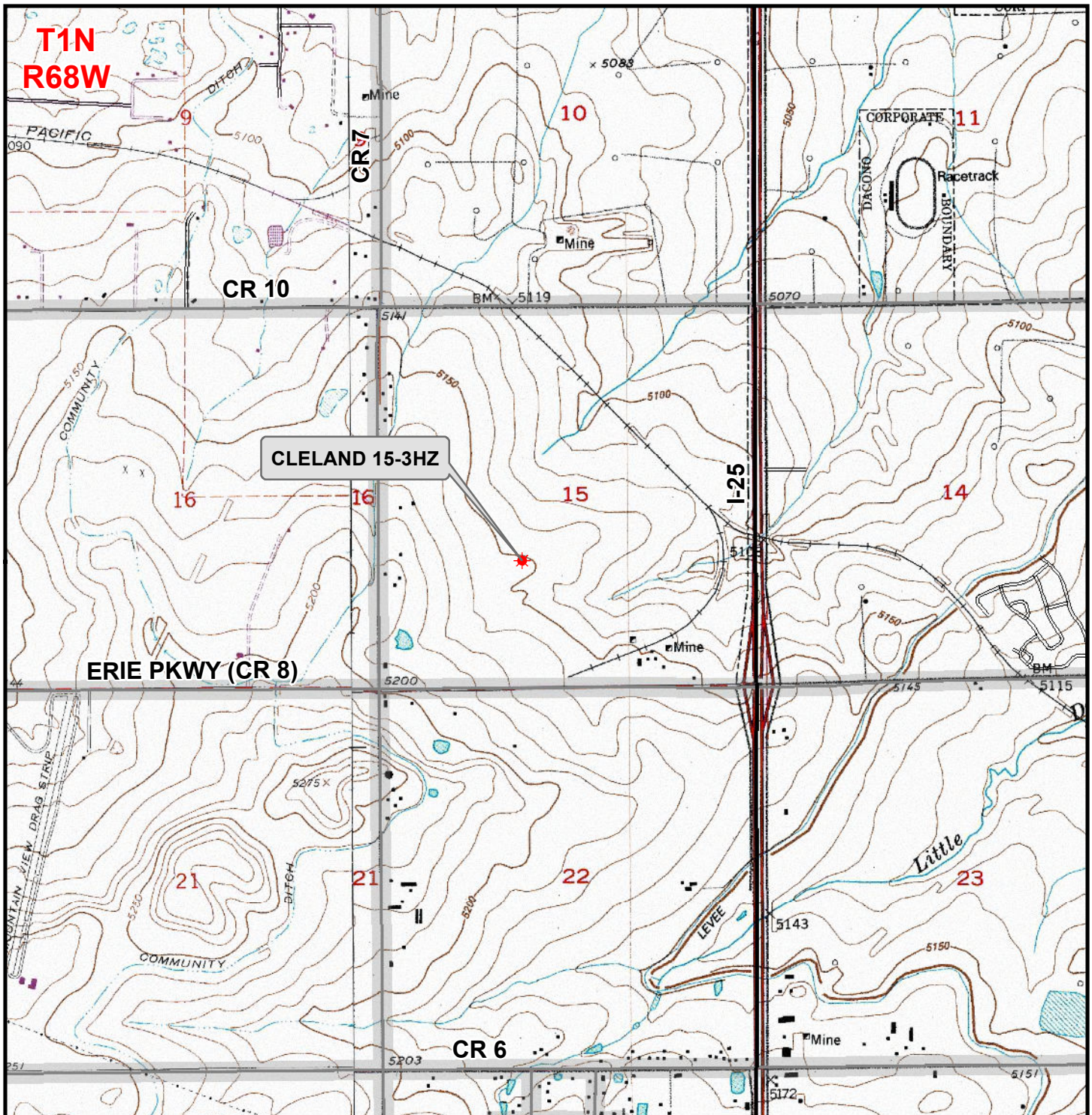
**CONSULTING, LLC**

SHERIDAN OFFICE
1095 Saberton Avenue
Sheridan, Wyoming 82801
Phone 307-674-0609

LOVELAND OFFICE
6706 North Franklin Avenue
Loveland, Colorado 80538
Phone 970-776-4331

DRAFTED BY:	LMO	CHECKED BY:	RKF	SHEET NO:
DATE DRAFTED:	3/25/19	DATE SURVEYED:	3/19/19	3
REVISED:		FILE NAME:	15-108	3 OF 3

K:\ANADARKO\2015\2015_108_CLELAND_11-15HZ\CLELAND_11-15HZ\CLELAND_11-15HZ.mxd 4/4/2019 10:41:51 AM



Legend

- ★ Well - Proposed === Road - Primitive - Existing — Road - County - Existing
— Road - Improved - Existing — Road - Highway - Existing

WELL PAD - CLELAND 11-15HZ
GENERAL LOCATION MAP
CLELAND 15-3HZ
LOCATED IN SECTION 15
T1N, R68W, 6th P.M.
WELD COUNTY, COLORADO

**Kerr-McGee Oil &
Gas Onshore L.P.**
1099 18th Street
Denver, Colorado 80202



CONSULTING, LLC

SHERIDAN OFFICE **LOVELAND OFFICE**
1095 Saberton Avenue 6706 North Franklin Avenue
Sheridan, Wyoming 82801 Loveland, Colorado 80538
Phone 307-674-0609 Phone 970-776-4331

SCALE: 1" = 2,000ft

NAD83 CO-Nft

DRAWN: DP

DATE: 4 Apr 2019

REVISED:

DATE:

