

T1N, R68W

NW COR.
SEC. 15, T1N, R68W
FOUND 2 1/2" ALUM. CAP
ILLEGIBLE

N. 1/4 COR.
SEC. 15, T1N, R68W
FOUND 3 1/4" ALUM. CAP
L.S. NO. 22098

NE COR.
SEC. 15, T1N, R68W
FOUND 3 1/4" ALUM. CAP
P.L.S. NO. 8953

S 89°43'43" W 2697.87' (M)

S 89°38'08" W 2695.24' (M)

N 00°28'28" W 2642.38' (M)

N 00°14'26" W
2637.39' (M)

N 00°04'33" W 2635.99' (M)

SURFACE LOCATION: NAD 83
GROUND ELEVATION= 5150.4'
LATITUDE= 40.048756°
LONGITUDE= -104.992012°
LATITUDE= 40°02'55.522"
LONGITUDE= -104°59'31.243"
HEEL LOCATION: NAD 83
LATITUDE= 40.044883°
LONGITUDE= -104.993172°
LATITUDE= 40°02'41.578"
LONGITUDE= -104°59'35.421"
BOTTOM HOLE LOCATION: NAD 83
LATITUDE= 40.015028°
LONGITUDE= -104.993181°
LATITUDE= 40°00'54.101"
LONGITUDE= -104°59'35.452"

CENTER 1/4 COR.
SEC. 15, T1N, R68W
FOUND 2 1/2" ALUM. CAP
P.L.S. NO. 28285

15

E. 1/4 COR.
SEC. 15, T1N, R68W
FOUND 3 1/4" ALUM. CAP
P.L.S. NO. 8953

W. 1/4 COR.
SEC. 15, T1N, R68W
FOUND 2" ALUM. CAP
L.S. NO. 14083

S 89°37'22" W
2687.09' (M)

S 89°36'18" W
2687.67' (M)

N 00°22'42" W 2642.44' (M)

N 00°14'51" W
2639.72' (M)

N 00°04'19" W 2635.90' (M)

CLELAND 15-4HZ
SURFACE LOCATION

2010'

1684'

1760'

350'

HEEL LOCATION

SW COR.
SEC. 15, T1N, R68W
FOUND 2" ALUM. CAP
ILLEGIBLE

S 89°33'52" W 2681.06' (M)

S. 1/4 COR.
SEC. 15, T1N, R68W
FOUND 3 1/4" ALUM. CAP
P.L.S. NO. 8953

S 89°31'22" W 2679.61' (M)

SE COR.
SEC. 15, T1N, R68W
FOUND 2" BRASS CAP
ILLEGIBLE

WELLBORE CONTINUES
INTO SECTION 22

MATCH LINE
SEE SHEET 2

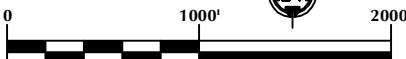
CERTIFICATE OF SURVEYOR:

THIS IS TO CERTIFY THAT THE ABOVE PLAT WAS PREPARED FROM FIELD NOTES OF ACTUAL SURVEYS MADE BY ME OR UNDER MY SUPERVISION AND THAT THE SAME ARE TRUE AND CORRECT TO THE BEST OF MY KNOWLEDGE AND BELIEF. THIS CERTIFICATE DOES NOT REPRESENT A LAND SURVEY PLAT OR IMPROVEMENT SURVEY PLAT AS DEFINED BY C.S. 37-5-102 AND CANNOT BE RELIED UPON TO DETERMINE OWNERSHIP.

Randall K. French
38512
PROFESSIONAL LAND SURVEYOR
3/25/19
RANDALL K. FRENCH
PROFESSIONAL LAND SURVEYOR
COLORADO REGISTRATION NUMBER 38512

NOTICE:
ACCORDING TO COLORADO STATE LAW YOU MUST TAKE LEGAL ACTION BASED UPON ANY DEFECT IN THIS SURVEY WITHIN THREE YEARS AFTER YOU FIRST DISCOVER SUCH DEFECT. IN NO EVENT MAY ANY ACTION BASED UPON ANY DEFECT IN THIS SURVEY BE COMMENCED MORE THAN TEN YEARS FROM THE DATE ON THE CERTIFICATION SHOWN HEREON.

NOTE:
MAGNETIC NORTH IS
CURRENT AS OF 3/19/2019.
MAGNETIC NORTH CHANGES
WEST 0°06' PER YEAR.



SCALE: 1" = 1000'

NOTES:

- ▲ INDICATES SECTION CORNER.
- INDICATES CALCULATED CORNER.
- ELEVATION BASED ON NAVD88 (GEOID12B).
- BASIS OF BEARING DERIVED FROM COLORADO COORDINATE SYSTEM OF 1983 NORTH ZONE.
- ALL MEASURED DISTANCES ARE GRID.
- COMBINED SCALE FACTOR: .99972060 CALCULATED FROM THE CENTER 1/4 CORNER OF SECTION 15, T1N, R68W.
- OPERATOR: TRAVIS HOLLAND / PDOP = 1.4.
- SEE ADDENDUM TO WELL LOCATION CERTIFICATE FOR EXISTING IMPROVEMENTS WITHIN 500' OF THE WELL PAD.
- WELL FOOTAGES ARE MEASURED AT RIGHT ANGLES TO THE SECTION LINES.
- THE BOTTOM OF HOLE BEARS S00°18'53"E, 10875' FROM THE HEEL LOCATION.

WELL PAD - CLELAND 11-15HZ

CLELAND 15-4HZ
WELL LOCATION CERTIFICATE
1760' FSL & 2010' FWL NESW (SURFACE)
350' FSL & 1684' FWL SESW (HEEL)
LOCATED IN SECTION 15, WELD COUNTY, COLORADO
50' FSL & 1644' FWL SESW (BOTTOM)
LOCATED IN SECTION 27
T1N, R68W, 6TH P.M.
BROOMFIELD COUNTY, COLORADO

**Kerr-McGee Oil &
Gas Onshore L.P.**
1099 18th Street
Denver, Colorado 80202



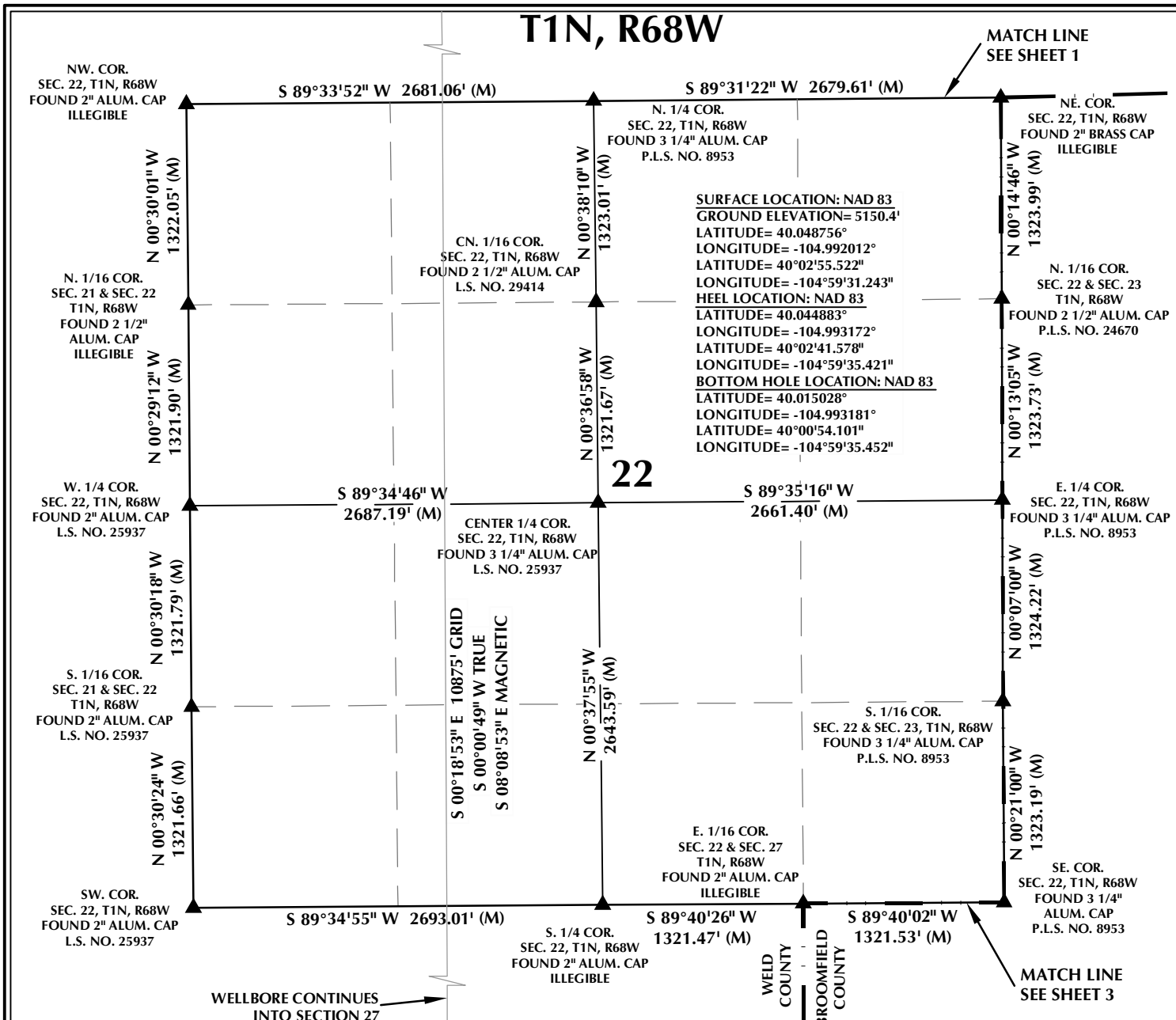
CONSULTING, LLC

SHERIDAN OFFICE
1095 Saberton Avenue
Sheridan, Wyoming 82801
Phone 307-674-0609

LOVELAND OFFICE
6706 North Franklin Avenue
Loveland, Colorado 80538
Phone 970-776-4331

DRAFTED BY: LMO	CHECKED BY: RKF	SHEET NO: 1 1 OF 3
DATE DRAFTED: 3/25/19	DATE SURVEYED: 3/19/19	
REVISED:	FILE NAME: 15-108	

T1N, R68W



22

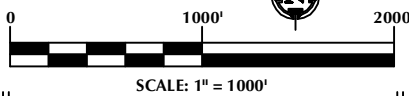
CERTIFICATE OF SURVEYOR:

THIS IS TO CERTIFY THAT THE ABOVE PLAT WAS PREPARED FROM FIELD NOTES OF ACTUAL SURVEYS MADE BY ME OR UNDER MY SUPERVISION AND THAT THE SAME ARE TRUE AND CORRECT TO THE BEST OF MY KNOWLEDGE AND BELIEF. THIS CERTIFICATE DOES NOT REPRESENT A LAND SURVEY PLAT OR IMPROVEMENT SURVEY PLAT AS DEFINED BY C.S. 37-5-102 AND CANNOT BE RELIED UPON TO DETERMINE OWNERSHIP.

Randall K. French
 38512
 3/25/19
 RANDALL K. FRENCH
 PROFESSIONAL LAND SURVEYOR
 COLORADO REGISTRATION NUMBER 38512

NOTICE:
 ACCORDING TO COLORADO STATE LAW YOU MUST TAKE LEGAL ACTION BASED UPON ANY DEFECT IN THIS SURVEY WITHIN THREE YEARS AFTER YOU FIRST DISCOVER SUCH DEFECT. IN NO EVENT MAY ANY ACTION BASED UPON ANY DEFECT IN THIS SURVEY BE COMMENCED MORE THAN TEN YEARS FROM THE DATE ON THE CERTIFICATION SHOWN HEREON.

NOTE:
 MAGNETIC NORTH IS CURRENT AS OF 3/19/2019. MAGNETIC NORTH CHANGES WEST 0°06' PER YEAR.



NOTES:

- ▲ INDICATES SECTION CORNER.
- INDICATES CALCULATED CORNER.
- ELEVATION BASED ON NAVD88 (GEOID12B).
- BASIS OF BEARING DERIVED FROM COLORADO COORDINATE SYSTEM OF 1983 NORTH ZONE.
- ALL MEASURED DISTANCES ARE GRID.
- COMBINED SCALE FACTOR: .99972060 CALCULATED FROM THE CENTER 1/4 CORNER OF SECTION 15, T1N, R68W.
- OPERATOR: TRAVIS HOLLAND / PDOP = 1.4.
- SEE ADDENDUM TO WELL LOCATION CERTIFICATE FOR EXISTING IMPROVEMENTS WITHIN 500' OF THE WELL PAD.
- WELL FOOTAGES ARE MEASURED AT RIGHT ANGLES TO THE SECTION LINES.
- THE BOTTOM OF HOLE BEARS S00°18'53"E, 10875' FROM THE HEEL LOCATION.

WELL PAD - CLELAND 11-15HZ

CLELAND 15-4HZ
 WELL LOCATION CERTIFICATE
 1760' FSL & 2010' FWL NESW (SURFACE)
 350' FSL & 1684' FWL SESW (HEEL)
 LOCATED IN SECTION 15, WELD COUNTY, COLORADO
 50' FSL & 1644' FWL SESW (BOTTOM)
 LOCATED IN SECTION 27
 T1N, R68W, 6TH P.M.
 BROOMFIELD COUNTY, COLORADO

Kerr-McGee Oil & Gas Onshore L.P.
 1099 18th Street
 Denver, Colorado 80202



CONSULTING, LLC

SHERIDAN OFFICE
 1095 Saberton Avenue
 Sheridan, Wyoming 82801
 Phone 307-674-0609

LOVELAND OFFICE
 6706 North Franklin Avenue
 Loveland, Colorado 80538
 Phone 970-776-4331

DRAFTED BY: LMO	CHECKED BY: RKF	SHEET NO: 2 2 OF 3
DATE DRAFTED: 3/25/19	DATE SURVEYED: 3/19/19	
REVISED:	FILE NAME: 15-108	

T1N, R68W

N. 1/4 COR.
SEC. 27, T1N, R68W
FOUND 2nd ALUM. CAP
ILLEGIBLE

S 89°40'26" W
1321.47' (M)

MATCH LINE
SEE SHEET 2

S 89°40'02" W
1321.53' (M)

NE. COR.
SEC. 27, T1N, R68W
FOUND 3 1/4th ALUM. CAP
P.L.S. NO. 8953

NW. COR.
SEC. 27, T1N, R68W
FOUND 2nd ALUM. CAP
L.S. NO. 25937

S 89°34'55" W 2693.01' (M)

E. 1/16 COR.
SEC. 22 & SEC. 27, T1N, R68W
FOUND 2nd ALUM. CAP
ILLEGIBLE

N 00°00'36" E
1317.08' (M)

N 00°33'21" W 2642.83' (M)

N 00°05'32" W
2643.07' (M)

N. 1/16 COR.
SEC. 26 & SEC. 27, T1N, R68W
FOUND 3 1/4th ALUM. CAP
ILLEGIBLE

N 00°00'41" E
1322.14' (M)

CENTER 1/4 COR.
SEC. 27, T1N, R68W
FOUND 2 1/2nd ALUM. CAP
P.L.S. NO. 24305

27

W. 1/4 COR.
SEC. 27, T1N, R68W
FOUND 3 1/4th ALUM. CAP
P.L.S. NO. 18482

S 89°35'12" W
2671.61' (M)

S 89°35'11" W
2638.28' (M)

E. 1/4 COR.
SEC. 27, T1N, R68W
FOUND 3 1/4th ALUM. CAP
P.L.S. NO. 8953

N 00°34'03" W 2642.11' (M)

S 00°18'53" E 10875' GRID
S 00°00'49" W TRUE
S 08°08'53" E MAGNETIC

N 00°00'57" E
2645.92' (M)

SURFACE LOCATION: NAD 83
GROUND ELEVATION= 5150.4'
LATITUDE= 40.048756°
LONGITUDE= -104.992012°
HEEL LOCATION: NAD 83
LATITUDE= 40.044883°
LONGITUDE= -104.993172°
BOTTOM HOLE LOCATION: NAD 83
LATITUDE= 40.015028°
LONGITUDE= -104.993181°
LONGITUDE= -104°00'54.101"
LONGITUDE= -104°59'35.452"

BOTTOM OF HOLE:
50' FSL & 1644' FWL

1644'

S. 1/4 COR.
SEC. 27, T1N, R68W
FOUND 3 1/4th ALUM. CAP
ILLEGIBLE

N 00°06'59" W 2650.56' (M)

SE. COR.
SEC. 27, T1N, R68W
FOUND 3 1/4th ALUM. CAP
P.L.S. NO. 8953

SW. COR.
SEC. 27, T1N, R68W
FOUND 3 1/4th ALUM. CAP
P.L.S. NO. 13258

S 89°40'04" W 2644.69' (M)

S 89°41'16" W 2644.36' (M)

WELD COUNTY
BROOMFIELD COUNTY

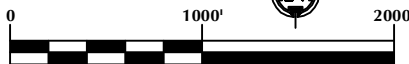
CERTIFICATE OF SURVEYOR:

THIS IS TO CERTIFY THAT THE ABOVE PLAT WAS PREPARED FROM FIELD NOTES OF ACTUAL SURVEYS MADE BY ME OR UNDER MY SUPERVISION AND THAT THE SAME ARE TRUE AND CORRECT TO THE BEST OF MY KNOWLEDGE AND BELIEF. THIS CERTIFICATE DOES NOT REPRESENT A LAND SURVEY PLAT OR IMPROVEMENT SURVEY PLAT AS DEFINED BY C.S. 37-5-102 AND CANNOT BE RELIED UPON TO DETERMINE OWNERSHIP.

Randall K. French
38512
PROFESSIONAL LAND SURVEYOR
3/25/19

NOTICE:
ACCORDING TO COLORADO STATE LAW YOU MUST TAKE LEGAL ACTION BASED UPON ANY DEFECT IN THIS SURVEY WITHIN THREE YEARS AFTER YOU FIRST DISCOVER SUCH DEFECT. IN NO EVENT MAY ANY ACTION BASED UPON ANY DEFECT IN THIS SURVEY BE COMMENCED MORE THAN TEN YEARS FROM THE DATE ON THE CERTIFICATION SHOWN HEREON.

NOTE:
MAGNETIC NORTH IS
CURRENT AS OF 3/19/2019.
MAGNETIC NORTH CHANGES
WEST 0°06' PER YEAR.



SCALE: 1" = 1000'

NOTES:

- ▲ INDICATES SECTION CORNER.
- INDICATES CALCULATED CORNER.
- ELEVATION BASED ON NAVD88 (GEOID12B).
- BASIS OF BEARING DERIVED FROM COLORADO COORDINATE SYSTEM OF 1983 NORTH ZONE.
- ALL MEASURED DISTANCES ARE GRID.
- COMBINED SCALE FACTOR: .99972060 CALCULATED FROM THE CENTER 1/4 CORNER OF SECTION 15, T1N, R68W.
- OPERATOR: TRAVIS HOLLAND / PDOP = 1.4.
- SEE ADDENDUM TO WELL LOCATION CERTIFICATE FOR EXISTING IMPROVEMENTS WITHIN 500' OF THE WELL PAD.
- WELL FOOTAGES ARE MEASURED AT RIGHT ANGLES TO THE SECTION LINES.
- THE BOTTOM OF HOLE BEARS S00°18'53"E, 10875' FROM THE HEEL LOCATION.

WELL PAD - CLELAND 11-15HZ

CLELAND 15-4HZ
WELL LOCATION CERTIFICATE
1760' FSL & 2010' FWL NESW (SURFACE)
350' FSL & 1684' FWL SESW (HEEL)
LOCATED IN SECTION 15, WELD COUNTY, COLORADO
50' FSL & 1644' FWL SESW (BOTTOM)
LOCATED IN SECTION 27
T1N, R68W, 6TH P.M.
BROOMFIELD COUNTY, COLORADO

**Kerr-McGee Oil &
Gas Onshore L.P.**
1099 18th Street
Denver, Colorado 80202



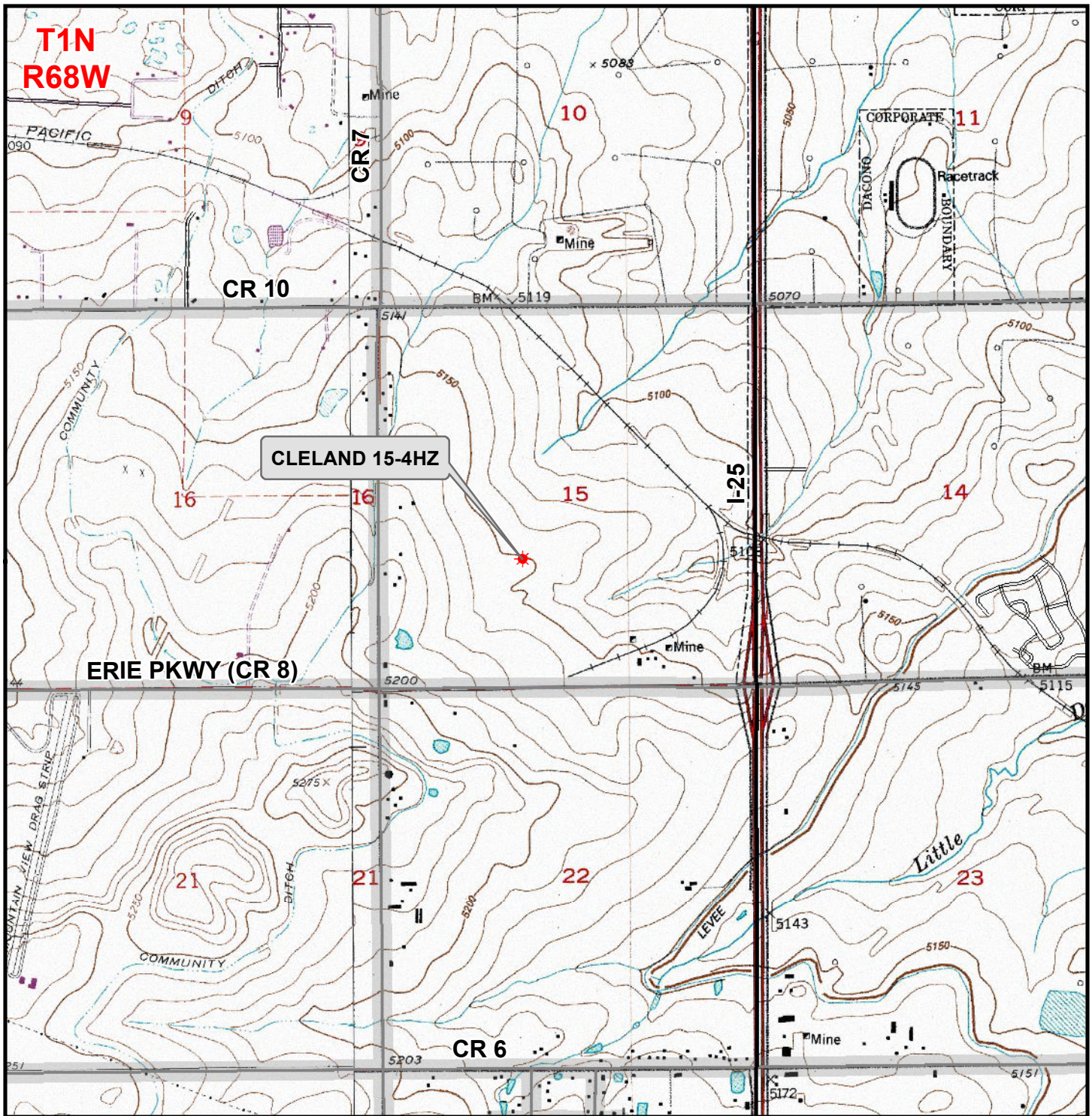
CONSULTING, LLC

SHERIDAN OFFICE
1095 Saberton Avenue
Sheridan, Wyoming 82801
Phone 307-674-0609

LOVELAND OFFICE
6706 North Franklin Avenue
Loveland, Colorado 80538
Phone 970-776-4331

DRAFTED BY: LMO	CHECKED BY: RKF	SHEET NO: 3 3 OF 3
DATE DRAFTED: 3/25/19	DATE SURVEYED: 3/19/19	
REVISED:	FILE NAME: 15-108	

K:\ANADARKO\2015\108_CLELAND_11-15HZ\CLELAND_11-15HZ\CLELAND_15-4HZ.mxd 4/4/2019 10:40:53 AM



Legend

- Well - Proposed
- Road - Primitive - Existing
- Road - County - Existing
- Road - Improved - Existing
- Road - Highway - Existing

WELL PAD - CLELAND 11-15HZ
GENERAL LOCATION MAP
CLELAND 15-4HZ
LOCATED IN SECTION 15
T1N, R68W, 6th P.M.
WELD COUNTY, COLORADO

Kerr-McGee Oil & Gas Onshore L.P.
 1099 18th Street
 Denver, Colorado 80202



CONSULTING, LLC
 SHERIDAN OFFICE: 1095 Saberton Avenue, Sheridan, Wyoming 82801, Phone 307-674-0609
 LOVELAND OFFICE: 6706 North Franklin Avenue, Loveland, Colorado 80538, Phone 970-776-4331

SCALE: 1" = 2,000ft	NAD83 CO-Nft
DRAWN: DP	DATE: 4 Apr 2019
REVISED:	DATE: