



GAMMA RAY C.C.L.
CEMENT BOND V.D.L.

Company PDC Energy
Well Guttersten 22-13

Field Wattenberg
County Weld
State CO

Location: 1982 PNL 8.1974 FWL
APL #: 05-153-2631.3
SE /NW

SEC 13 TWP 3N RGE 64W
Elevation 4740'

Permanent Datum
Log Measured from
June 3, 2019

Date
Depth (feet)
Bottom (feet)
Bottom (feet)
Casing Size
Type Fluid
Estimated Cement Top

Time Well Ready
Unit Number
Tool Size / ID Number
Witnessed By
Run Number
Barbed Record
To
From
Size
Weight
From
To

Probes 2.34" Radii
Guttersten 22-13
Chavez

Survey Record
Sounding
Production String

Shas
Width
Top
Bottom

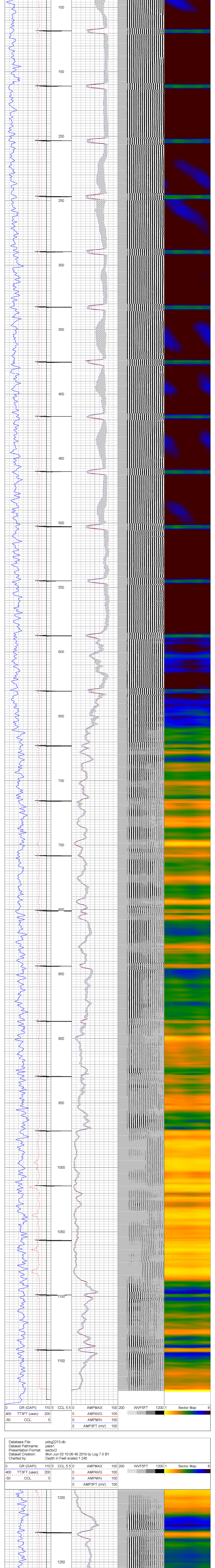
4.5'

<<< Fold Here >>>

All interpretations are opinions based on inferences from electrical or other measurements and we cannot and do not guarantee the accuracy or correctness of any interpretation, and we shall not, except in the case of gross or willful negligence on our part, be liable or responsible for any loss, costs, damages, or expenses incurred or sustained by anyone resulting from any interpretation made by any of our officers, agents or employees. These interpretations are also subject to our general terms and conditions set out in our current Price Schedule.

Comments

Database File: pdcg2213.db
Dataset Pathname: pass2
Presentation Format: sector2
Dataset Creation: Mon Jun 03 10:16:34 2019 by Log 7.0 B1
Charted by: Depth in Feet scaled 1:240



Database File: pdcg2213.db
Dataset Pathname: pass1
Presentation Format: sector2
Dataset Creation: Mon Jun 03 10:06:49 2019 by Log 7.0 B1
Charted by: Depth in Feet scaled 1:240

