



PROJECT DETAILS: Weld County, CO NAD 83

Geodetic System: US State Plane 1983  
Datum: North American Datum 1983  
Ellipsoid: GRS 1980  
Zone: Colorado Northern Zone  
System Datum: Mean Sea Level  
Local North: True

Project: Weld County, CO NAD 83  
Site: Fox Creek 25 SE Pad  
Well: Fox Creek 12-63-36-1-5N  
Wellbore: OH  
Design: Plan 1



Azimuths to True North  
Magnetic North: 8.25°  
Magnetic Field  
Strength: 52796.3snT  
Dip Angle: 67.28°  
Date: 12/13/2018  
Model: HDGM



Plan: Plan 1 (Fox Creek 12-63-36-1-5N/OH)

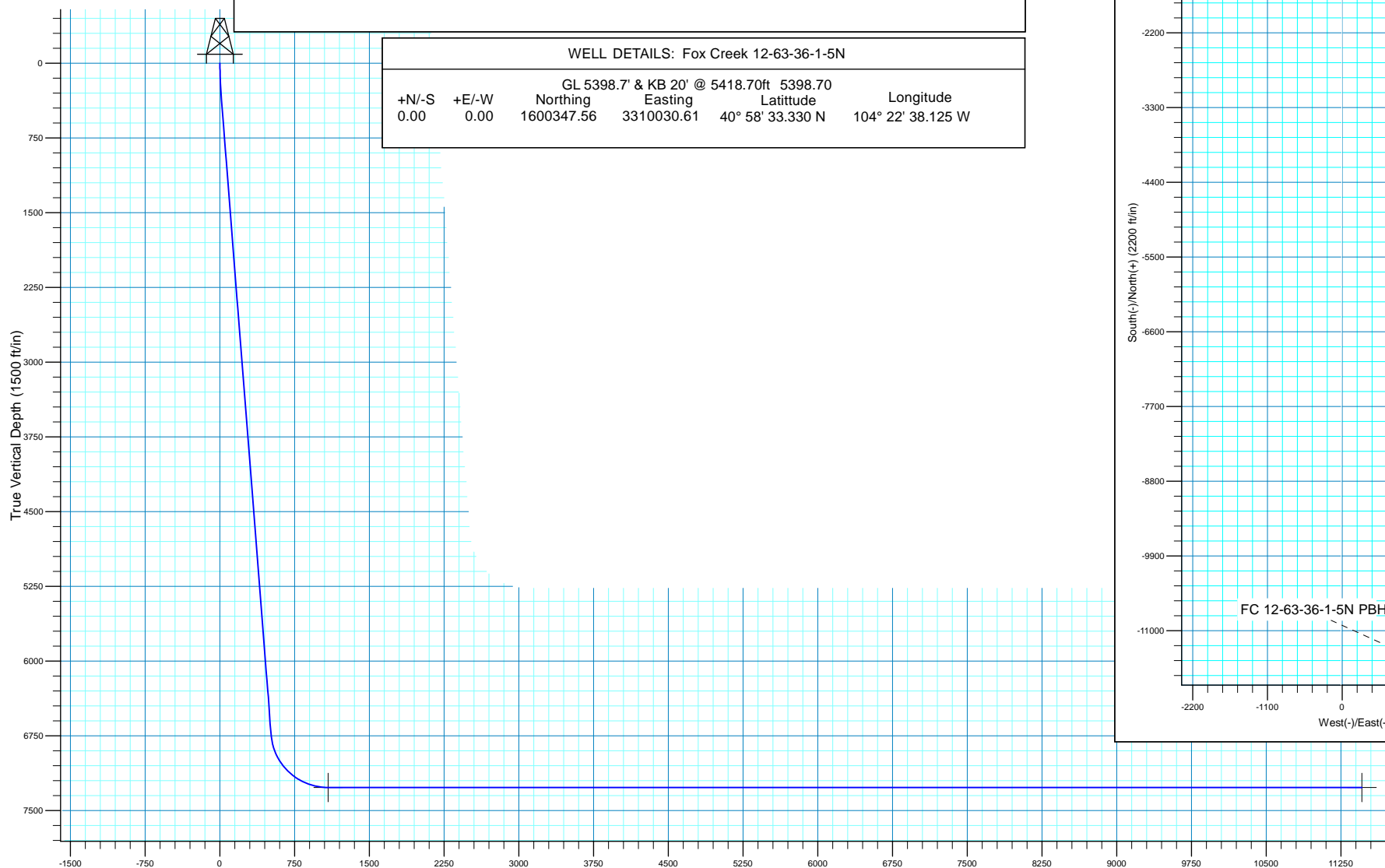
Created By: Seth Burstad

#### SECTION DETAILS

MD	Inc	Azi	TVD	+N/-S	+E/-W	Dleg	TFace	VSect
0.00	0.00	0.000	0.00	0.00	0.00	0.00	0.00	0.00
345.76	10.64	114.726	343.78	-13.39	29.07	3.08	114.73	13.34
6861.67	10.64	114.726	6747.68	-516.54	1121.72	0.00	0.00	514.80
7717.53	90.00	180.089	7269.00	-1087.94	1209.84	10.00	65.74	1086.06
18091.95	90.00	180.089	7269.00	-11462.35	1193.78	0.00	0.00	11460.48

#### WELL DETAILS: Fox Creek 12-63-36-1-5N

GL 5398.7' & KB 20' @ 5418.70ft 5398.70						
+N/-S	+E/-W	Northing	Easting	Latitude	Longitude	
0.00	0.00	1600347.56	3310030.61	40° 58' 33.330 N	104° 22' 38.125 W	



Vertical Section at 180.089° (1500 ft/in)

