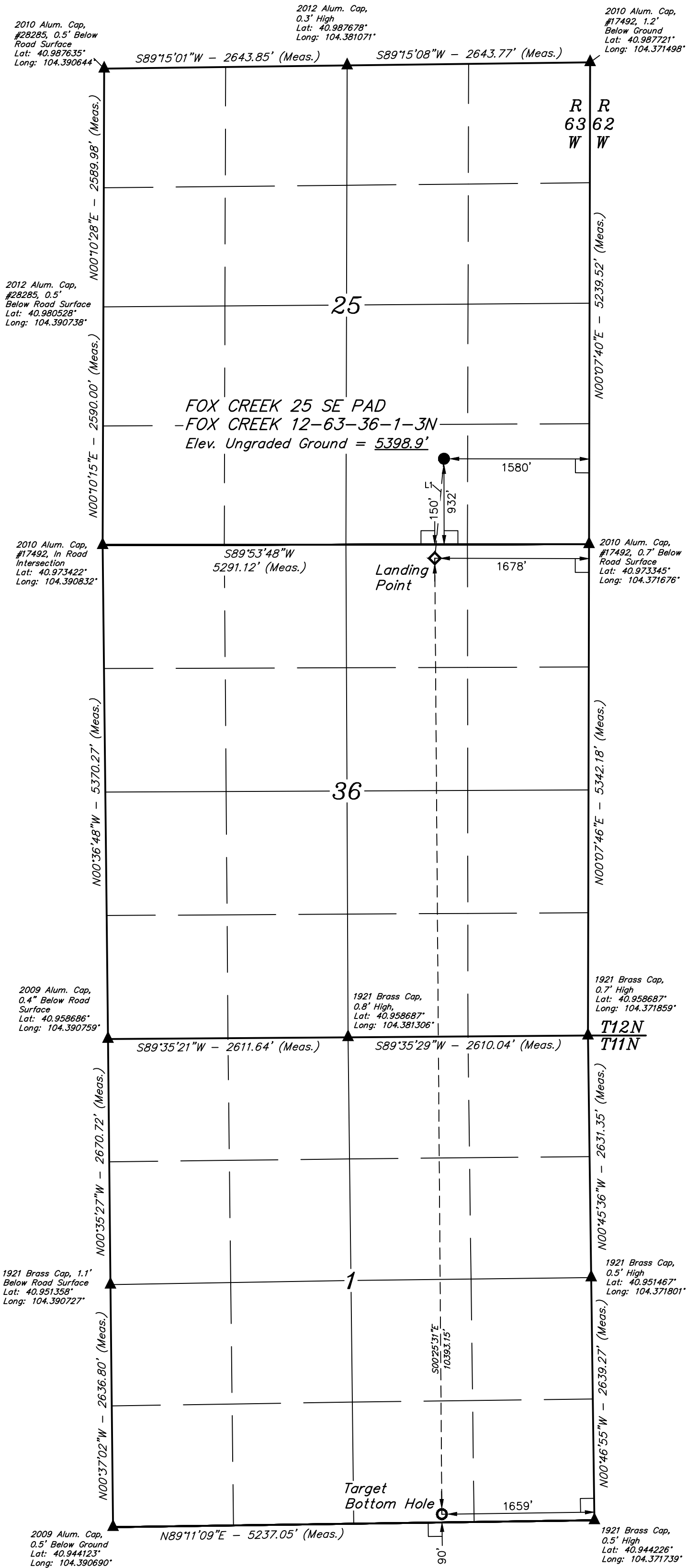


LEGEND:

- 90° SYMBOL
- PROPOSED WELLHEAD.
- LANDING POINT.
- TARGET BOTTOM HOLE.
- SECTION CORNERS LOCATED. (NAD 83)
- SECTION CORNERS RE-ESTABLISHED. (Not Set on Ground.) (NAD 83)

T12N, R63W, 6th P.M.



LINE TABLE		
LINE	DIRECTION	LENGTH
L1	S05°17'36"W	1087.20'

PDOP = 2.1



NAD 83 (SURFACE LOCATION)	NAD 83 (LANDING POINT)	NAD 83 (TARGET BOTTOM HOLE)
LATITUDE = 40°58'33.34" (40.975927°)	LATITUDE = 40°58'22.65" (40.972958°)	LATITUDE = 40°56'39.99" (40.944440°)
LONGITUDE = 104°22'38.51" (104.377365°)	LONGITUDE = 104°22'39.92" (104.377560°)	LONGITUDE = 104°22'39.88" (104.37745°)
NAD 27 (SURFACE LOCATION)	NAD 27 (LANDING POINT)	NAD 27 (TARGET BOTTOM HOLE)
LATITUDE = 40°58'33.40" (40.975944°)	LATITUDE = 40°58'22.71" (40.972975°)	LATITUDE = 40°56'40.05" (40.944457°)
LONGITUDE = 104°22'36.67" (104.376854°)	LONGITUDE = 104°22'38.08" (104.377245°)	LONGITUDE = 104°22'38.04" (104.377234°)
STATE PLANE NAD 83 (CO. NORTH)	STATE PLANE NAD 83 (CO. NORTH)	STATE PLANE NAD 83 (CO. NORTH)
N: 1600347.81' E: 3310000.72'	N: 1599264.95' E: 3309906.43'	N: 1588875.07' E: 3310041.08'
STATE PLANE NAD 27 (CO. NORTH)	STATE PLANE NAD 27 (CO. NORTH)	STATE PLANE NAD 27 (CO. NORTH)
N: 600345.38' E: 2310150.19'	N: 599262.53' E: 2310055.90'	N: 588872.84' E: 2310190.48'

BASIS OF BEARINGS
TRANSVERSE MERCATOR PROJECTION WITH
A CENTRAL MERIDIAN OF W 105°00'00".

BASIS OF ELEVATION
OPUS SOLUTION GENERATED NAVD 88



UELS, LLC
Corporate Office * 85 South 200 East
Vernal, UT 84078 * (435) 789-1017



HIGHPOINT OPERATING CORPORATION

FOX CREEK 25 SE PAD
FOX CREEK 12-63-36-1-3N
SW 1/4 SE 1/4, SECTION 25, T12N, R63W, 6th P.M.
WELD COUNTY, COLORADO

SURVEYED BY	GREG WEIMER, D.E.	08-20-18	SCALE
DRAWN BY	J.U.	08-31-18	1" = 1000'

WELL LOCATION PLAT

CERTIFICATE OF REGISTRATION
THIS IS TO CERTIFY THAT THE ABOVE SURVEY WAS MADE BY ME OR UNDER MY SUPERVISION
AND THAT THE SAME ARE TRUE AND CORRECT TO THE BEST OF MY
KNOWLEDGE AND BELIEF.

REGISTERED LAND SURVEYOR
REGISTRATION NO. 28785
STATE OF COLORADO
08-31-18