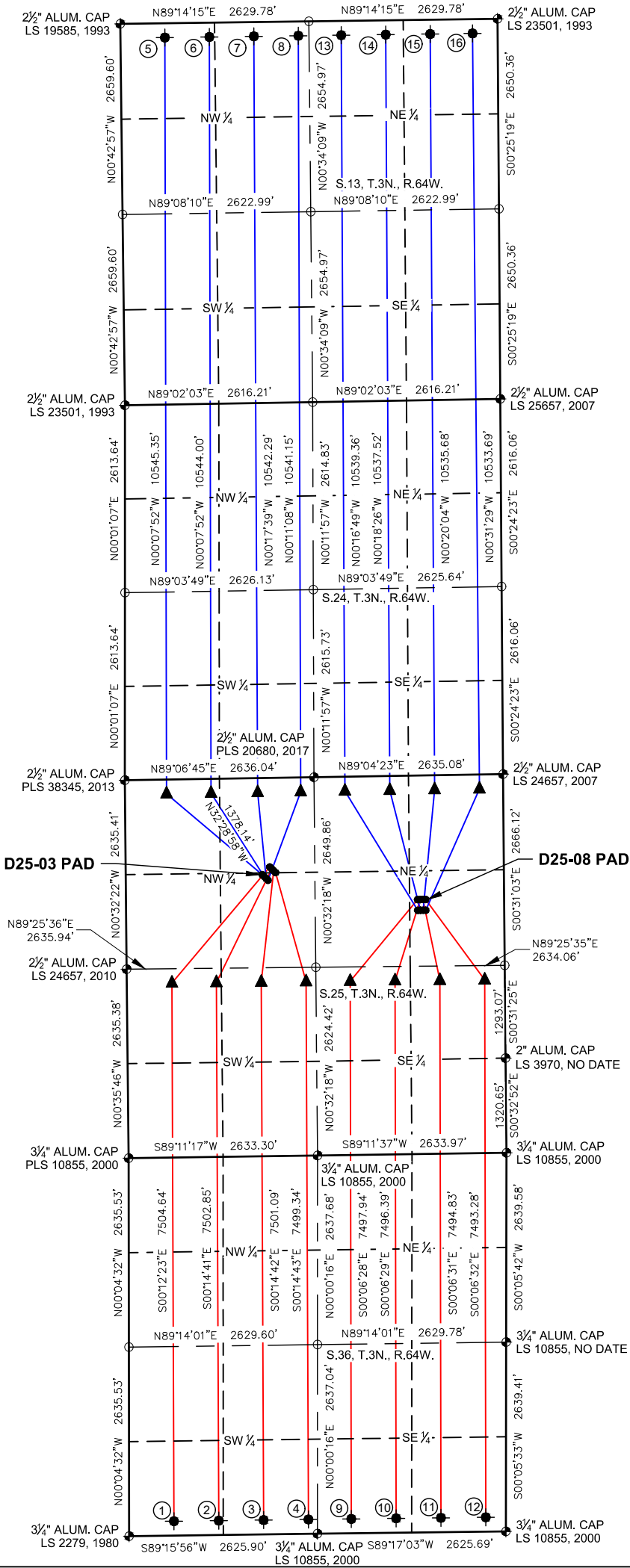
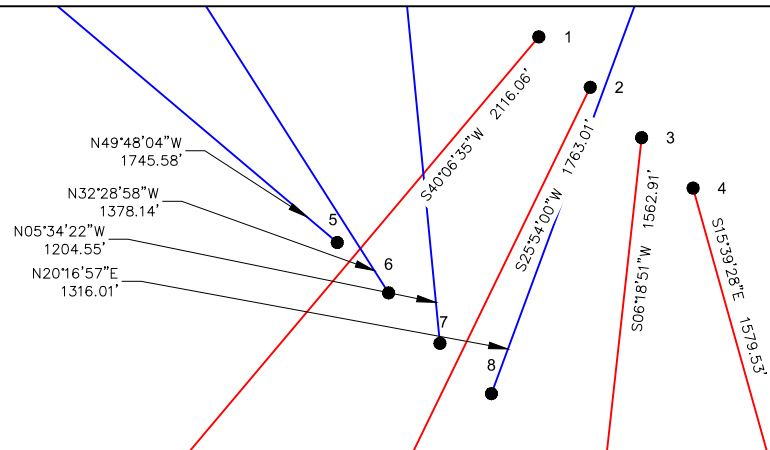


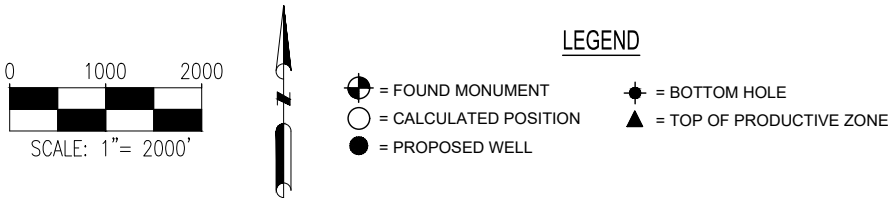
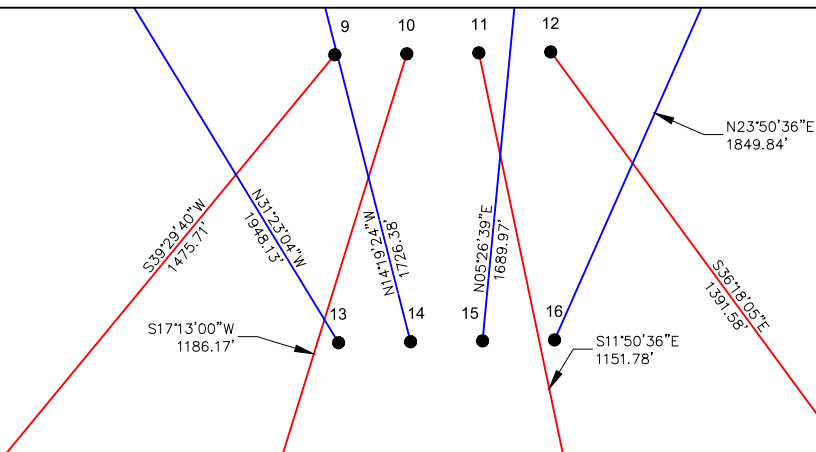
D25-03 PAD & D25-08 PAD  
MULTI-WELL LOCATION PLAT / MULTI-WELL PLAN  
T3N R64W SECTION 25



PROPOSED WELLBORE DIRECTION DATA  
D25-03 PAD  
SLOTS 1-8



PROPOSED WELLBORE DIRECTION DATA  
D25-08 PAD  
SLOTS 9-16



Notes:  
1) All bearings are Grid Bearings of the Colorado State Plane Coordinate System, North Zone, North American Datum 1983/2011. The lineal dimensions as shown herein are grid distances based upon the "U.S. Survey Foot." To get ground distances multiply shown distance by 1.000271913.  
2) Distances are measured at 90° from section line of the Sixth Principal Meridian, County of Weld, State of Colorado.  
3) Ground elevations are based on an observed GPS elevation (NAVD 1988 DATUM).  
4) Surface use: "RANGELAND"  
5) Instrument Operator: ROSS TODD  
6) This map does not represent a boundary survey.

DISCLAIMER:  
THIS PLOT DOES NOT REPRESENT A MONUMENTED LAND SURVEY AND SHOULD NOT BE RELIED UPON TO DETERMINE BOUNDARY LINES, PROPERTY OWNERSHIP OR OTHER PROPERTY INTERESTS. PARCEL LINES, IF DEPICTED HAVE NOT BEEN FIELD VERIFIED AND MAY BE BASED UPON PUBLICLY AVAILABLE DATA THAT ALSO HAS NOT BEEN INDEPENDENTLY VERIFIED.

SURFACE HOLE LOCATION							TOP OF PRODUCTIVE ZONE		BOTTOM HOLE LOCATION		
SLOT	WELL NAME	LATITUDE	LONGITUDE	FOOTAGE		QTR-QTR	ELEV.	FOOTAGE		FOOTAGE	
1	GUTTERSEN STATE D36-781	40.20020°N	104.50200°W	1242' FNL	2009' FWL	NENW	4787'	2433' FSL	630' FWL	200' FSL	625' FWL
2	GUTTERSEN STATE D36-771	40.20013°N	104.50191°W	1268' FNL	2035' FWL	NENW	4787'	2430' FSL	1250' FWL	200' FSL	1250' FWL
3	GUTTERSEN STATE D36-762	40.20006°N	104.50182°W	1295' FNL	2062' FWL	NENW	4787'	2428' FSL	1875' FWL	200' FSL	1875' FWL
4	GUTTERSEN STATE D36-752	40.19998°N	104.50172°W	1322' FNL	2088' FWL	NENW	4787'	2425' FSL	2500' FWL	200' FSL	2500' FWL
5	GUTTERSEN D25-781	40.19991°N	104.50238°W	1347' FNL	1903' FWL	SENW	4787'	200' FNL	580' FWL	200' FNL	620' FWL
6	GUTTERSEN D25-772	40.19984°N	104.50229°W	1374' FNL	1929' FWL	SENW	4786'	200' FNL	1200' FWL	200' FNL	1240' FWL
7	GUTTERSEN D25-762	40.19976°N	104.50220°W	1401' FNL	1956' FWL	SENW	4787'	200' FNL	1850' FWL	200' FNL	1860' FWL
8	GUTTERSEN D25-753	40.19969°N	104.50210°W	1427' FNL	1982' FWL	SENW	4787'	200' FNL	2450' FWL	200' FNL	2480' FWL
9	GUTTERSEN STATE D36-743	40.19889°N	104.49465°W	1729' FNL	1206' FEL	SENE	4772'	2423' FSL	2155' FEL	200' FSL	2155' FEL
10	GUTTERSEN STATE D36-733	40.19889°N	104.49451°W	1729' FNL	1169' FEL	SENE	4772'	2420' FSL	1530' FEL	200' FSL	1530' FEL
11	GUTTERSEN STATE D36-724	40.19889°N	104.49438°W	1730' FNL	1131' FEL	SENE	4773'	2417' FSL	905' FEL	200' FSL	905' FEL
12	GUTTERSEN STATE D36-714	40.19889°N	104.49425°W	1730' FNL	1094' FEL	SENE	4772'	2415' FSL	280' FEL	200' FSL	280' FEL
13	GUTTERSEN D25-743	40.19848°N	104.49465°W	1879' FNL	1206' FEL	SENE	4772'	200' FNL	2205' FEL	200' FNL	2180' FEL
14	GUTTERSEN D25-734	40.19848°N	104.49451°W	1879' FNL	1168' FEL	SENE	4772'	200' FNL	1580' FEL	200' FNL	1560' FEL
15	GUTTERSEN D25-724	40.19848°N	104.49438°W	1880' FNL	1131' FEL	SENE	4772'	200' FNL	955' FEL	200' FNL	940' FEL
16	GUTTERSEN D25-715	40.19848°N	104.49425°W	1880' FNL	1093' FEL	SENE	4773'	200' FNL	330' FEL	200' FNL	350' FEL

8620 Wolff Court  
Westminster, CO 80031  
(303) 928-7128  
www.ascentgeomatics.com

FIELD DATE:  
07-10-18

DRAWN BY:  
CAM

DRAWING DATE:  
06-24-19

CHECKED BY:  
CLP

**SURFACE LOCATION:**  
SEC. 25, T3N, R64W, 6TH P.M.  
WELD COUNTY, COLORADO

PUBLICLY AVAILABLE DATA SOURCES HAVE NOT BEEN INDEPENDENTLY VERIFIED BY ASCENT.