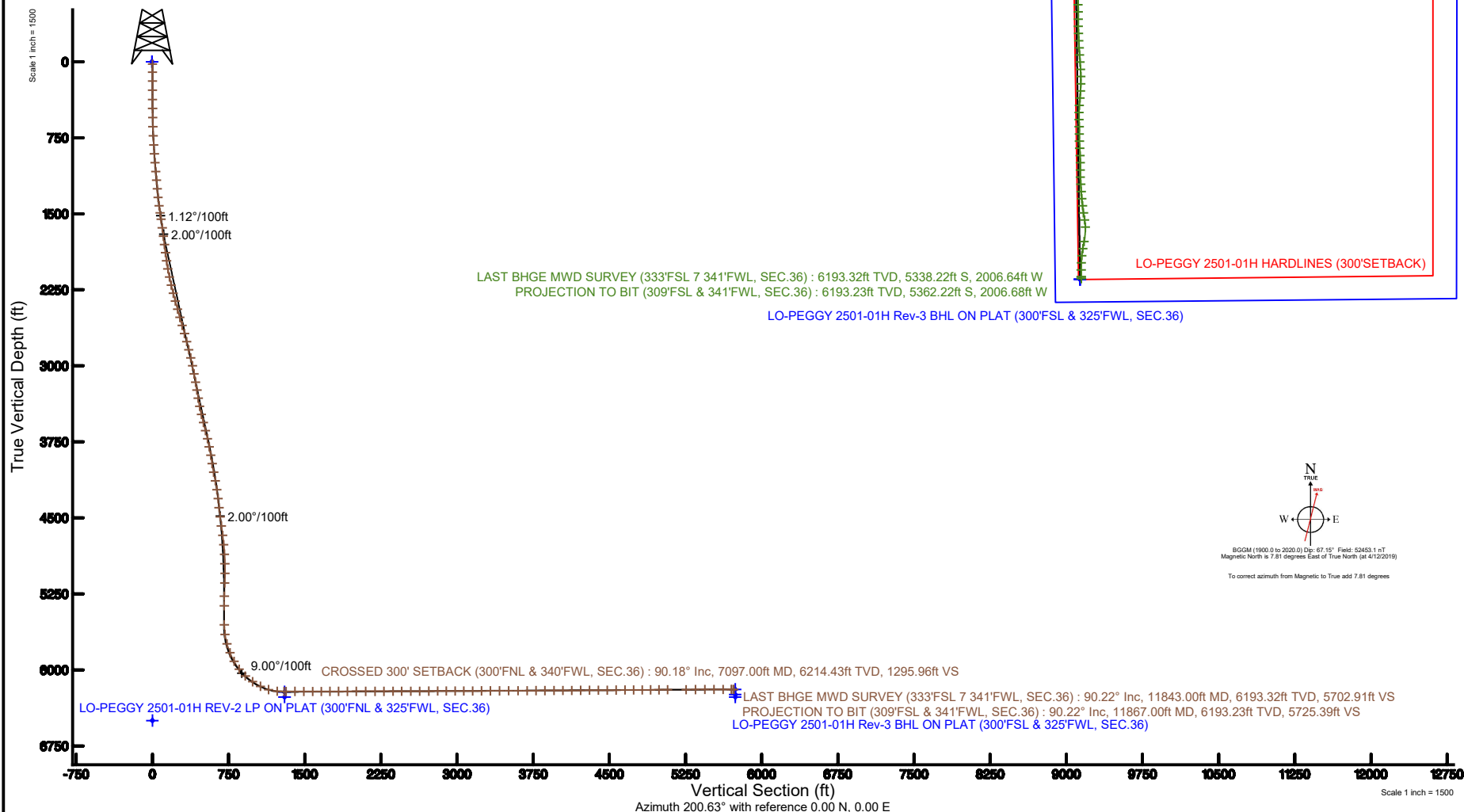


Location:	COLORADO	Slot:	SLOT#03 LO-PEGGY 2501-01H (300'FSL & 2412'FWL, SEC.25)
Field:	WELD COUNTY (NAD83/TN)	Well:	LO-PEGGY 2501-01H
Facility:	SEC.25-T09N-R60W	Wellbore:	LO-PEGGY 2501-01H PWB

Plot reference wellpath is LO-PEGGY 2501-01H (REV-C.0) PWP	Grid System: NAD83 / Lambert Colorado SP, Northern Zone (501), US feet
True vertical depths are referenced to Rig (24'KB) (RKB)	North Reference: True north
Measured depths are referenced to Rig (24'KB) (RKB)	Scale: True distance
Rig (24'KB) (RKB) to Mean Sea Level: 4918 feet	Depths are in feet
Mean Sea Level to Mud line (At Slot: SLOT#03 LO-PEGGY 2501-01H (300'FSL & 2412'FWL, SEC.25): 0 feet	Created by: doddanna on 2019-05-06
Coordinates are in feet referenced to Slot	Database: WellArchitectDB



Actual Wellpath Report

LO-PEGGY 2501-01H AWP

Page 1 of 8



REFERENCE WELLPATH IDENTIFICATION

Operator	VERDAD RESOURCES	Slot	SLOT#03 LO-PEGGY 2501-01H (300'FSL & 2412'FWL, SEC.25)
Area	COLORADO	Well	LO-PEGGY 2501-01H
Field	WELD COUNTY (NAD83/TN)	Wellbore	LO-PEGGY 2501-01H AWB
Facility	SEC.25-T09N-R60W		

REPORT SETUP INFORMATION

Projection System	NAD83 / Lambert Colorado SP, Northern Zone (501), US feet	Software System	WellArchitect® 5.1
North Reference	True	User	Doddanna
Scale	0.999990	Report Generated	5/6/2019 at 1:37:56 PM
Convergence at slot	0.94° East	Database/Source file	WellArchitectDB/LO-PEGGY_2501-01H_AWP.xml

WELLPATH LOCATION

	Local coordinates		Grid coordinates		Geographic coordinates	
	North[ft]	East[ft]	Easting[US ft]	Northing[US ft]	Latitude	Longitude
Slot Location	0.01	-9.99	3404485.29	1506564.38	40°42'53.189"N	104°02'27.032"W
Facility Reference Pt			3404495.27	1506564.53	40°42'53.189"N	104°02'26.902"W
Field Reference Pt			3242930.13	1254608.21	40°01'44.490"N	104°37'56.946"W

WELLPATH DATUM

Calculation method	Minimum curvature	Rig (24'KB) (RKB) to Facility Vertical Datum	4918.00ft
Horizontal Reference Pt	Slot	Rig (24'KB) (RKB) to Mean Sea Level	4918.00ft
Vertical Reference Pt	Rig (24'KB) (RKB)	Rig (24'KB) (RKB) to Mud Line at Slot (SLOT#03 LO-PEGGY 2501-01H (300'FSL & 2412'FWL, SEC.25))	4918.00ft
MD Reference Pt	Rig (24'KB) (RKB)	Section Origin	N 0.00, E 0.00 ft
Field Vertical Reference	Mean Sea Level	Section Azimuth	200.63°

Actual Wellpath Report

LO-PEGGY 2501-01H AWP

Page 2 of 8



REFERENCE WELLPATH IDENTIFICATION			
Operator	VERDAD RESOURCES	Slot	SLOT#03 LO-PEGGY 2501-01H (300'FSL & 2412'FWL, SEC.25)
Area	COLORADO	Well	LO-PEGGY 2501-01H
Field	WELD COUNTY (NAD83/TN)	Wellbore	LO-PEGGY 2501-01H AWB
Facility	SEC.25-T09N-R60W		

WELLPATH DATA (128 stations) † = interpolated/extrapolated station										
MD [ft]	Inclination [°]	Azimuth [°]	TVD [ft]	Vert Sect [ft]	North [ft]	East [ft]	Latitude	Longitude	DLS [°/100ft]	Comments
0.00†	0.000	338.280	0.00	0.00	0.00	0.00	40°42'53.189°N	104°02'27.032°W	0.00	
24.00	0.000	338.280	24.00	0.00	0.00	0.00	40°42'53.189°N	104°02'27.032°W	0.00	
102.00	0.030	338.280	102.00	-0.02	0.02	-0.01	40°42'53.189°N	104°02'27.032°W	0.04	
191.00	0.070	330.030	191.00	-0.07	0.09	-0.04	40°42'53.190°N	104°02'27.033°W	0.05	
281.00	0.570	283.250	281.00	-0.04	0.24	-0.51	40°42'53.191°N	104°02'27.039°W	0.58	
372.00	1.830	269.640	371.98	0.53	0.33	-2.40	40°42'53.192°N	104°02'27.063°W	1.41	
462.00	2.850	273.330	461.90	1.71	0.45	-6.07	40°42'53.193°N	104°02'27.111°W	1.15	
552.00	4.600	280.060	551.71	3.04	1.21	-11.86	40°42'53.201°N	104°02'27.186°W	2.00	
642.00	5.820	278.400	641.33	4.67	2.51	-19.93	40°42'53.214°N	104°02'27.291°W	1.37	
732.00	7.650	266.050	730.71	8.13	2.76	-30.42	40°42'53.216°N	104°02'27.427°W	2.58	
822.00	8.900	268.090	819.77	13.29	2.12	-43.35	40°42'53.210°N	104°02'27.595°W	1.43	
912.00	10.560	267.830	908.48	19.16	1.58	-58.55	40°42'53.205°N	104°02'27.792°W	1.85	
1002.00	12.880	271.570	996.60	25.63	1.54	-76.82	40°42'53.204°N	104°02'28.030°W	2.71	
1092.00	16.360	272.700	1083.67	32.81	2.41	-99.52	40°42'53.213°N	104°02'28.324°W	3.88	
1182.00	18.260	276.180	1169.59	40.23	4.53	-126.20	40°42'53.234°N	104°02'28.671°W	2.40	
1272.00	20.590	276.210	1254.46	47.69	7.76	-155.96	40°42'53.266°N	104°02'29.057°W	2.59	
1362.00	22.390	274.570	1338.20	56.38	10.83	-188.78	40°42'53.296°N	104°02'29.483°W	2.11	
1452.00	23.250	273.360	1421.16	66.39	13.24	-223.60	40°42'53.320°N	104°02'29.936°W	1.09	
1529.00	24.840	272.520	1491.47	75.94	14.84	-254.93	40°42'53.336°N	104°02'30.343°W	2.11	
1598.00	23.960	272.480	1554.31	84.81	16.09	-283.41	40°42'53.348°N	104°02'30.712°W	1.28	
1693.00	27.700	274.200	1639.81	97.07	18.54	-324.71	40°42'53.372°N	104°02'31.249°W	4.01	
1787.00	29.710	277.290	1722.25	108.62	23.10	-369.62	40°42'53.417°N	104°02'31.832°W	2.66	
1882.00	30.940	278.620	1804.25	119.14	29.74	-417.12	40°42'53.483°N	104°02'32.449°W	1.48	
1976.00	31.730	278.790	1884.54	129.24	37.14	-465.44	40°42'53.556°N	104°02'33.076°W	0.85	
2071.00	32.820	278.740	1964.86	139.67	44.87	-515.57	40°42'53.632°N	104°02'33.727°W	1.15	
2165.00	32.690	274.830	2043.93	151.83	50.88	-566.05	40°42'53.692°N	104°02'34.383°W	2.25	
2260.00	32.440	270.920	2124.00	167.42	53.45	-617.09	40°42'53.717°N	104°02'35.046°W	2.23	
2354.00	32.600	268.570	2203.26	185.43	53.22	-667.62	40°42'53.715°N	104°02'35.702°W	1.35	
2449.00	32.600	267.150	2283.30	205.24	51.31	-718.76	40°42'53.696°N	104°02'36.366°W	0.81	
2543.00	32.620	265.880	2362.48	225.94	48.23	-769.33	40°42'53.665°N	104°02'37.023°W	0.73	

Actual Wellpath Report

LO-PEGGY 2501-01H AWP

Page 3 of 8



REFERENCE WELLPATH IDENTIFICATION			
Operator	VERDAD RESOURCES	Slot	SLOT#03 LO-PEGGY 2501-01H (300'FSL & 2412'FWL, SEC.25)
Area	COLORADO	Well	LO-PEGGY 2501-01H
Field	WELD COUNTY (NAD83/TN)	Wellbore	LO-PEGGY 2501-01H AWB
Facility	SEC.25-T09N-R60W		

WELLPATH DATA (128 stations)										
MD [ft]	Inclination [°]	Azimuth [°]	TVD [ft]	Vert Sect [ft]	North [ft]	East [ft]	Latitude	Longitude	DLS [°/100ft]	Comments
2638.00	32.570	264.960	2442.52	247.74	44.15	-820.34	40°42'53.625"N	104°02'37.685"W	0.52	
2733.00	32.400	263.420	2522.66	270.45	38.98	-871.09	40°42'53.574"N	104°02'38.344"W	0.89	
2827.00	32.520	263.360	2601.97	293.55	33.18	-921.21	40°42'53.517"N	104°02'38.995"W	0.13	
2922.00	32.650	264.970	2682.02	316.34	27.98	-972.10	40°42'53.465"N	104°02'39.656"W	0.92	
3017.00	32.630	266.330	2762.02	337.98	24.09	-1023.19	40°42'53.427"N	104°02'40.319"W	0.77	
3111.00	32.700	267.680	2841.15	358.31	21.44	-1073.85	40°42'53.401"N	104°02'40.977"W	0.78	
3206.00	32.410	269.530	2921.23	377.49	20.19	-1124.95	40°42'53.388"N	104°02'41.641"W	1.09	
3300.00	32.530	271.780	3000.53	394.72	20.77	-1175.41	40°42'53.394"N	104°02'42.296"W	1.29	
3395.00	32.500	273.670	3080.64	410.42	23.20	-1226.41	40°42'53.418"N	104°02'42.958"W	1.07	
3490.00	32.360	273.800	3160.83	425.23	26.52	-1277.25	40°42'53.451"N	104°02'43.618"W	0.16	
3584.00	32.340	276.130	3240.24	438.81	30.87	-1327.35	40°42'53.494"N	104°02'44.269"W	1.33	
3679.00	32.580	277.200	3320.40	451.12	36.79	-1377.99	40°42'53.552"N	104°02'44.927"W	0.66	
3773.00	32.550	273.420	3399.63	464.48	41.47	-1428.34	40°42'53.598"N	104°02'45.581"W	2.16	
3868.00	32.530	267.800	3479.74	481.96	42.01	-1479.39	40°42'53.604"N	104°02'46.243"W	3.18	
3962.00	32.530	265.670	3558.99	502.43	39.13	-1529.85	40°42'53.575"N	104°02'46.899"W	1.22	
4057.00	32.680	268.040	3639.02	523.06	36.33	-1580.95	40°42'53.547"N	104°02'47.562"W	1.35	
4151.00	31.560	269.430	3718.63	541.71	35.22	-1630.92	40°42'53.536"N	104°02'48.211"W	1.43	
4246.00	29.630	270.250	3800.41	558.88	35.07	-1679.27	40°42'53.535"N	104°02'48.839"W	2.08	
4340.00	29.540	272.390	3882.15	574.23	36.14	-1725.66	40°42'53.545"N	104°02'49.441"W	1.13	
4435.00	27.860	272.410	3965.48	588.50	38.05	-1771.24	40°42'53.564"N	104°02'50.033"W	1.77	
4529.00	25.560	267.080	4049.45	603.47	37.94	-1813.44	40°42'53.563"N	104°02'50.582"W	3.53	
4624.00	23.750	265.010	4135.79	619.94	35.23	-1852.97	40°42'53.536"N	104°02'51.095"W	2.11	
4718.00	22.020	268.390	4222.39	634.79	33.09	-1889.45	40°42'53.515"N	104°02'51.569"W	2.31	
4813.00	20.480	273.180	4310.94	646.52	33.51	-1923.85	40°42'53.519"N	104°02'52.015"W	2.44	
4907.00	18.890	272.530	4399.44	656.18	35.10	-1955.47	40°42'53.535"N	104°02'52.426"W	1.71	
5002.00	16.840	266.540	4489.86	666.58	34.94	-1984.58	40°42'53.533"N	104°02'52.804"W	2.90	
5096.00	14.170	255.390	4580.46	678.78	31.22	-2009.31	40°42'53.497"N	104°02'53.125"W	4.25	
5191.00	11.720	250.610	4673.04	691.70	25.08	-2029.67	40°42'53.436"N	104°02'53.389"W	2.81	
5286.00	9.780	260.090	4766.37	702.00	20.49	-2046.72	40°42'53.391"N	104°02'53.611"W	2.76	
5380.00	8.110	264.440	4859.23	708.99	18.47	-2061.19	40°42'53.371"N	104°02'53.799"W	1.92	

Actual Wellpath Report

LO-PEGGY 2501-01H AWP

Page 4 of 8



REFERENCE WELLPATH IDENTIFICATION			
Operator	VERDAD RESOURCES	Slot	SLOT#03 LO-PEGGY 2501-01H (300'FSL & 2412'FWL, SEC.25)
Area	COLORADO	Well	LO-PEGGY 2501-01H
Field	WELD COUNTY (NAD83/TN)	Wellbore	LO-PEGGY 2501-01H AWB
Facility	SEC.25-T09N-R60W		

WELLPATH DATA (128 stations) † = interpolated/extrapolated station										
MD (ft)	Inclination (°)	Azimuth (°)	TVD (ft)	Vert Sect (ft)	North (ft)	East (ft)	Latitude	Longitude	DLS (°/100ft)	Comments
5475.00	6.310	273.260	4953.47	713.50	18.12	-2073.07	40°42'53.367"N	104°02'53.953"W	2.22	
5569.00	4.370	301.820	5047.08	714.35	20.30	-2081.27	40°42'53.389"N	104°02'54.060"W	3.44	
5664.00	4.460	326.650	5141.80	711.48	25.30	-2086.38	40°42'53.438"N	104°02'54.126"W	2.00	
5795.00	0.060	131.360	5272.67	708.50	29.51	-2089.13	40°42'53.480"N	104°02'54.162"W	3.45	
5890.00	0.040	329.480	5367.67	708.50	29.50	-2089.11	40°42'53.480"N	104°02'54.161"W	0.10	
6079.00	0.060	29.510	5556.67	708.36	29.65	-2089.09	40°42'53.481"N	104°02'54.161"W	0.03	
6173.00	8.840	178.740	5650.30	715.03	22.45	-2088.91	40°42'53.410"N	104°02'54.159"W	9.46	
6268.00	15.440	185.460	5743.13	734.03	2.54	-2089.95	40°42'53.213"N	104°02'54.172"W	7.09	
6362.00	23.320	182.540	5831.74	763.84	-28.55	-2091.97	40°42'52.906"N	104°02'54.198"W	8.44	
6457.00	30.300	178.880	5916.48	804.02	-71.35	-2092.34	40°42'52.483"N	104°02'54.203"W	7.55	
6552.00	40.000	176.970	5994.07	854.37	-125.93	-2090.25	40°42'51.944"N	104°02'54.176"W	10.27	
6646.00	49.860	178.430	6060.54	915.46	-192.18	-2087.66	40°42'51.289"N	104°02'54.142"W	10.55	
6741.00	57.290	179.930	6116.91	986.57	-268.56	-2086.62	40°42'50.534"N	104°02'54.129"W	7.92	
6836.00	65.300	178.220	6162.50	1063.98	-351.80	-2085.22	40°42'49.712"N	104°02'54.110"W	8.58	
6930.00	74.620	175.770	6194.68	1144.76	-439.88	-2080.55	40°42'48.842"N	104°02'54.050"W	10.21	
7025.00	85.040	176.630	6211.43	1229.78	-533.05	-2074.37	40°42'47.921"N	104°02'53.969"W	11.00	
7097.00†	90.178	178.556	6214.43	1295.96	-604.90	-2071.35	40°42'47.211"N	104°02'53.930"W	7.62	CROSSED 300' SETBACK (300'FNL & 340'FWL, SEC.36)
7120.00	91.820	179.170	6214.03	1317.31	-627.89	-2070.89	40°42'46.984"N	104°02'53.924"W	7.62	
7214.00	90.030	178.360	6212.52	1404.54	-721.85	-2068.87	40°42'46.055"N	104°02'53.898"W	2.09	
7309.00	89.850	176.010	6212.62	1491.69	-816.73	-2064.20	40°42'45.118"N	104°02'53.837"W	2.48	
7404.00	90.030	175.090	6212.71	1577.73	-911.44	-2056.83	40°42'44.182"N	104°02'53.741"W	0.99	
7498.00	90.180	175.020	6212.54	1662.52	-1005.09	-2048.73	40°42'43.257"N	104°02'53.636"W	0.18	
7593.00	90.000	175.600	6212.39	1748.39	-1099.77	-2040.96	40°42'42.321"N	104°02'53.535"W	0.64	
7688.00	90.150	175.210	6212.27	1834.33	-1194.47	-2033.35	40°42'41.386"N	104°02'53.436"W	0.44	
7782.00	89.940	178.110	6212.19	1920.21	-1288.30	-2027.88	40°42'40.458"N	104°02'53.365"W	3.09	
7876.00	90.180	181.730	6212.10	2008.12	-1382.28	-2027.74	40°42'39.530"N	104°02'53.363"W	3.86	
7971.00	89.910	187.510	6212.02	2099.40	-1476.93	-2035.39	40°42'38.594"N	104°02'53.462"W	6.09	
8066.00	90.060	185.510	6212.05	2191.52	-1571.32	-2046.16	40°42'37.662"N	104°02'53.602"W	2.11	
8160.00	90.150	179.530	6211.87	2280.82	-1665.18	-2050.29	40°42'36.734"N	104°02'53.655"W	6.36	
8255.00	89.940	176.980	6211.80	2368.66	-1760.13	-2047.40	40°42'35.796"N	104°02'53.618"W	2.69	

Actual Wellpath Report

LO-PEGGY 2501-01H AWP

Page 5 of 8



REFERENCE WELLPATH IDENTIFICATION			
Operator	VERDAD RESOURCES	Slot	SLOT#03 LO-PEGGY 2501-01H (300'FSL & 2412'FWL, SEC.25)
Area	COLORADO	Well	LO-PEGGY 2501-01H
Field	WELD COUNTY (NAD83/TN)	Wellbore	LO-PEGGY 2501-01H AWB
Facility	SEC.25-T09N-R60W		

WELLPATH DATA (128 stations)										
MD [ft]	Inclination [°]	Azimuth [°]	TVD [ft]	Vert Sect [ft]	North [ft]	East [ft]	Latitude	Longitude	DLS [°/100ft]	Comments
8349.00	90.150	179.770	6211.73	2455.65	-1854.08	-2044.74	40°42'34.868"N	104°02'53.583"W	2.98	
8444.00	90.340	180.270	6211.32	2544.57	-1949.08	-2044.77	40°42'33.929"N	104°02'53.583"W	0.56	
8538.00	90.580	179.470	6210.56	2632.46	-2043.08	-2044.56	40°42'33.000"N	104°02'53.580"W	0.89	
8633.00	90.460	178.570	6209.70	2720.78	-2138.06	-2042.93	40°42'32.062"N	104°02'53.559"W	0.96	
8728.00	90.580	177.290	6208.84	2808.41	-2232.99	-2039.50	40°42'31.124"N	104°02'53.515"W	1.35	
8822.00	90.150	175.870	6208.24	2894.25	-2326.82	-2033.89	40°42'30.197"N	104°02'53.442"W	1.58	
8917.00	90.120	176.600	6208.02	2980.76	-2421.61	-2027.65	40°42'29.260"N	104°02'53.361"W	0.77	
9011.00	90.090	175.600	6207.85	3066.28	-2515.39	-2021.26	40°42'28.333"N	104°02'53.278"W	1.06	
9106.00	90.150	176.960	6207.65	3152.82	-2610.19	-2015.10	40°42'27.397"N	104°02'53.197"W	1.43	
9201.00	90.120	178.890	6207.42	3240.46	-2705.12	-2011.66	40°42'26.459"N	104°02'53.153"W	2.03	
9295.00	90.220	181.630	6207.14	3328.57	-2799.11	-2012.08	40°42'25.530"N	104°02'53.158"W	2.92	
9390.00	90.030	183.290	6206.94	3418.83	-2894.02	-2016.16	40°42'24.592"N	104°02'53.211"W	1.76	
9484.00	90.220	185.770	6206.73	3509.13	-2987.72	-2023.59	40°42'23.666"N	104°02'53.307"W	2.65	
9579.00	90.460	183.350	6206.17	3600.41	-3082.41	-2031.14	40°42'22.731"N	104°02'53.405"W	2.56	
9673.00	90.650	180.990	6205.26	3689.56	-3176.33	-2034.70	40°42'21.802"N	104°02'53.451"W	2.52	
9768.00	90.030	179.330	6204.69	3778.56	-3271.33	-2034.96	40°42'20.864"N	104°02'53.455"W	1.87	
9862.00	90.220	178.860	6204.49	3865.99	-3365.32	-2033.48	40°42'19.935"N	104°02'53.435"W	0.54	
9957.00	90.280	178.920	6204.07	3954.23	-3460.30	-2031.64	40°42'18.997"N	104°02'53.411"W	0.09	
10052.00	90.280	179.660	6203.61	4042.72	-3555.29	-2030.46	40°42'18.058"N	104°02'53.396"W	0.78	
10146.00	90.370	175.910	6203.08	4129.33	-3649.20	-2026.83	40°42'17.130"N	104°02'53.349"W	3.99	
10241.00	90.520	178.060	6202.34	4216.34	-3744.06	-2021.83	40°42'16.193"N	104°02'53.284"W	2.27	
10335.00	90.400	179.030	6201.58	4303.44	-3838.03	-2019.44	40°42'15.264"N	104°02'53.253"W	1.04	
10430.00	90.220	180.190	6201.07	4392.12	-3933.02	-2018.80	40°42'14.326"N	104°02'53.244"W	1.24	
10524.00	90.550	178.290	6200.44	4479.63	-4027.00	-2017.55	40°42'13.397"N	104°02'53.228"W	2.05	
10619.00	90.370	176.180	6199.67	4566.82	-4121.89	-2012.97	40°42'12.459"N	104°02'53.168"W	2.23	
10714.00	90.340	176.730	6199.09	4653.48	-4216.70	-2007.09	40°42'11.522"N	104°02'53.092"W	0.58	
10808.00	90.340	174.660	6198.53	4738.71	-4310.43	-2000.04	40°42'10.596"N	104°02'53.000"W	2.20	
10903.00	90.460	173.050	6197.87	4823.52	-4404.88	-1989.87	40°42'09.663"N	104°02'52.868"W	1.70	
10998.00	90.280	171.570	6197.25	4907.14	-4499.02	-1977.16	40°42'08.733"N	104°02'52.703"W	1.57	
11092.00	90.090	170.090	6196.95	4988.71	-4591.82	-1962.18	40°42'07.816"N	104°02'52.508"W	1.59	

Actual Wellpath Report

LO-PEGGY 2501-01H AWP

Page 6 of 8



REFERENCE WELLPATH IDENTIFICATION			
Operator	VERDAD RESOURCES	Slot	SLOT#03 LO-PEGGY 2501-01H (300'FSL & 2412'FWL, SEC.25)
Area	COLORADO	Well	LO-PEGGY 2501-01H
Field	WELD COUNTY (NAD83/TN)	Wellbore	LO-PEGGY 2501-01H AWB
Facility	SEC.25-T09N-R60W		

WELLPATH DATA (128 stations)										
MD [ft]	Inclination [°]	Azimuth [°]	TVD [ft]	Vert Sect [ft]	North [ft]	East [ft]	Latitude	Longitude	DLS [°/100ft]	Comments
11187.00	90.400	178.210	6196.54	5073.67	-4686.24	-1952.50	40°42'06.883"N	104°02'52.382"W	8.55	
11376.00	90.370	191.400	6195.27	5255.10	-4874.16	-1968.30	40°42'05.026"N	104°02'52.587"W	6.98	
11471.00	90.370	190.210	6194.65	5348.70	-4967.47	-1986.11	40°42'04.104"N	104°02'52.819"W	1.25	
11565.00	90.120	186.220	6194.25	5440.48	-5060.48	-1999.54	40°42'03.185"N	104°02'52.993"W	4.25	
11660.00	90.340	181.680	6193.87	5531.46	-5155.23	-2006.08	40°42'02.249"N	104°02'53.078"W	4.78	
11754.00	90.060	179.440	6193.54	5619.75	-5249.22	-2007.00	40°42'01.320"N	104°02'53.089"W	2.40	
11843.00	90.220	180.100	6193.32	5702.91	-5338.22	-2006.64	40°42'00.441"N	104°02'53.085"W	0.76	LAST BHGE MWD SURVEY (333'FSL 7 341'FWL, SEC.36)
11867.00	90.220	180.100	6193.23	5725.39	-5362.22	-2006.68	40°42'00.203"N	104°02'53.085"W	0.00	PROJECTION TO BIT (309'FSL & 341'FWL, SEC.36)

Actual Wellpath Report

LO-PEGGY 2501-01H AWP

Page 7 of 8



REFERENCE WELLPATH IDENTIFICATION			
Operator	VERDAD RESOURCES	Slot	SLOT#03 LO-PEGGY 2501-01H (300'FSL & 2412'FWL, SEC.25)
Area	COLORADO	Well	LO-PEGGY 2501-01H
Field	WELD COUNTY (NAD83/TN)	Wellbore	LO-PEGGY 2501-01H AWB
Facility	SEC.25-T09N-R60W		

TARGETS								
Name	TVD [ft]	North [ft]	East [ft]	Grid East [US ft]	Grid North [US ft]	Latitude	Longitude	Shape
LO-PEGGY 2501-03H SEC.25-T09N-R60W	0.00	-0.01	9.99	3404495.27	1506564.53	40°42'53.189"N	104°02'26.902"W	polygon
LO-PEGGY 2501-03H SEC.36-T09N-R60W	0.00	-0.01	9.99	3404495.27	1506564.53	40°42'53.189"N	104°02'26.902"W	polygon
LO-PEGGY 2501-01H Rev-3 BHL ON PLAT (300'FSL & 325'FWL, SEC.36)	6193.00	-5371.68	-2022.46	3402551.51	1501160.22	40°42'00.110"N	104°02'53.290"W	point
LO-PEGGY 2501-01H REV-2 LP ON PLAT (300'FNL & 325'FWL, SEC.36)	6218.00	-604.80	-2086.83	3402408.72	1505925.33	40°42'47.212"N	104°02'54.131"W	point
LO-PEGGY 2501-01H Rev-2 BHL ON PLAT (300'FSL & 325'FWL, SEC.36)	6244.00	-5371.68	-2022.46	3402551.51	1501160.22	40°42'00.110"N	104°02'53.290"W	point
LO-PEGGY 2501-01H BHL ON PLAT (300'FSL & 325'FWL, SEC.36)	6268.00	-5371.68	-2022.46	3402551.51	1501160.22	40°42'00.110"N	104°02'53.290"W	point
LO-PEGGY 2501-01H LP ON PLAT (300'FNL & 325'FWL, SEC.36)	6268.00	-604.80	-2086.83	3402408.72	1505925.33	40°42'47.212"N	104°02'54.131"W	point
LO-PEGGY 2501-01H HARDLINES (300'SETBACK)	6500.00	0.00	0.00	3404485.29	1506564.38	40°42'53.189"N	104°02'27.032"W	polygon

WELLPATH COMPOSITION - Ref Wellbore: LO-PEGGY 2501-01H AWB					Ref Wellpath: LO-PEGGY 2501-01H AWP	
Start MD [ft]	End MD [ft]	Positional Uncertainty Model	Log Name/Comment		Wellbore	
24.00	1529.00	BHI NaviTrak (Rotating+Axial Corr)	BHI NaviTrak (Rotating+Axial Corr) Surface Surveys <102'-1529'>		LO-PEGGY 2501-01H AWB	
1529.00	11843.00	BHI AutoTrak Curve (Short)	BHI/AutoTrak Curve (Short) 1598'-11843'>		LO-PEGGY 2501-01H AWB	
11843.00	11867.00	Blind Drilling (std)	Projection to bit		LO-PEGGY 2501-01H AWB	

Actual Wellpath Report

LO-PEGGY 2501-01H AWP

Page 8 of 8



REFERENCE WELLPATH IDENTIFICATION			
Operator	VERDAD RESOURCES	Slot	SLOT#03 LO-PEGGY 2501-01H (300'FSL & 2412'FWL, SEC.25)
Area	COLORADO	Well	LO-PEGGY 2501-01H
Field	WELD COUNTY (NAD83/TN)	Wellbore	LO-PEGGY 2501-01H AWB
Facility	SEC.25-T09N-R60W		

WELLPATH COMMENTS				
MD [ft]	Inclination [°]	Azimuth [°]	TVD [ft]	Comment
7097.00	90.178	178.556	6214.43	CROSSED 300' SETBACK (300'FNL & 340'FWL, SEC.36)
11843.00	90.220	180.100	6193.32	LAST BHGE MWD SURVEY (333'FSL 7 341'FWL, SEC.36)
11867.00	90.220	180.100	6193.23	PROJECTION TO BIT (309'FSL & 341'FWL, SEC.36)