

Crew

Name	Arrive Wellsite	Depart Wellsite	Name	Arrive Wellsite	Depart Wellsite	Name	Arrive Wellsite	Depart Wellsite
Emuobosan Onosu	2019-04-17	2019-04-20						

Mud Properties Record

Date / Time	Run No.	Measured Depth (ft)	Mud Type	Density (ppg)	Viscosity (cP)	pH	Fluid Loss (cm3)	Oil / Water	Source	Total Chlorides (ppm)	K+ (%)
2019-04-18 01:30	2	1588.00	Synthetic Based Mud	9.4	79	N/A	N/A	73/27	Active Pit	35000	0.00
2019-04-18 17:00	2	4252.00	Synthetic Based Mud	9.3	61	N/A	N/A	73/27	Active Pit	36000	0.00
2019-04-19 05:20	2	7062.00	Synthetic Based Mud	9.5	56	N/A	N/A	69/31	Active Pit	39000	0.00

Mud Resistivity Record

Date / Time	Run No.	Measured Depth (ft)	Surface Temp (degF)	Rm (ohm.m)	Rmf (ohm.m)	Rmc (ohm.m)	BHCT (degF)	Rm @ BHCT (ohm.m)	Rmf @ BHCT (ohm.m)	Rmc @ BHCT (ohm.m)
2019-04-18 05:00	2	1588.00	85.0	100.000	100.000	100.000	85.0	100.000	100.000	100.000

Equipment and Service Data

Run No.	Tool	Serial Number	Measurement	Sensor Offset (ft)	Bit Offset (ft)	Max O.D. (in)	Min I.D. (in)
2	AutoTrak Curve Steering Unit	12653420	Near Bit VSS	5.93	6.74	7.000	4.330
2	AutoTrak Curve Steering Unit	12653420	Near Bit Inclination	5.93	6.74	7.000	4.330
2	AutoTrak Curve MWD	14270075	Gamma (single)	2.70	12.84	7.000	3.250
2	AutoTrak Curve MWD	14270075	Directional (mag)	12.27	22.41	7.000	3.250
2	OnTrak	11768343	Pressure	1.20	5601.94	6.750	0.000
2	OnTrak	11768343	Gamma (double)	2.09	5602.83	6.750	0.000
2	OnTrak	11768343	Resistivity (4tx)	6.13	5606.87	6.750	0.000
2	OnTrak	11768343	Directional (mag)	11.92	5612.66	6.750	0.000

Service and Tool Mnemonics

Mnemonic	Name	Description
ATC SU	AutoTrak Curve SU	Auto Trak Curve Steering Unit
ATC MWD	AutoTrak Curve MWD	Auto Trak Curve MWD
ATC LCPM	AutoTrak Curve LCPM	Auto Trak Curve LCPM
OTK	OnTrak	Sensor Sub (Inc, Azi, Temp, Azimuthal GR, Res, AP, VSS), OnTrak Platform
BCPM	BCPM	Bi-Directional Communication and Power Module, OnTrak Platform

Comments

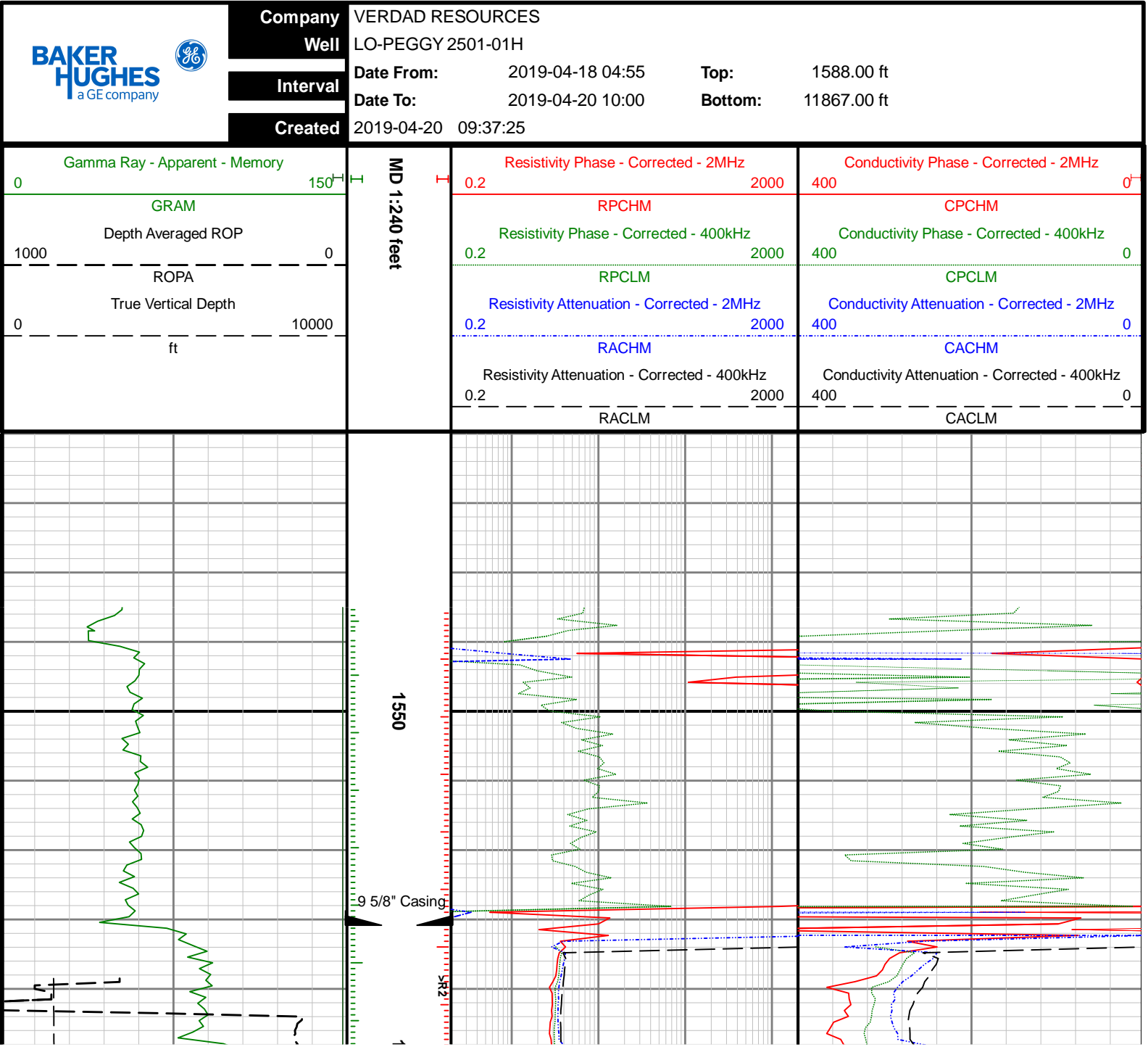
1

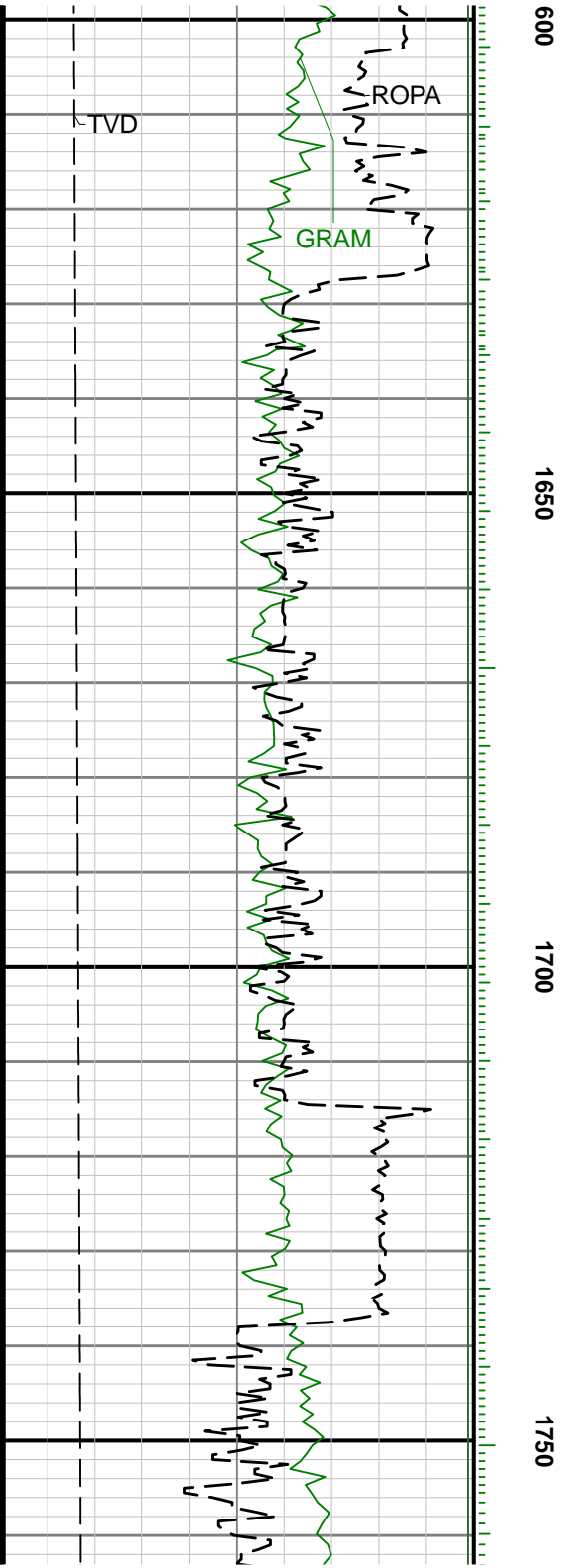
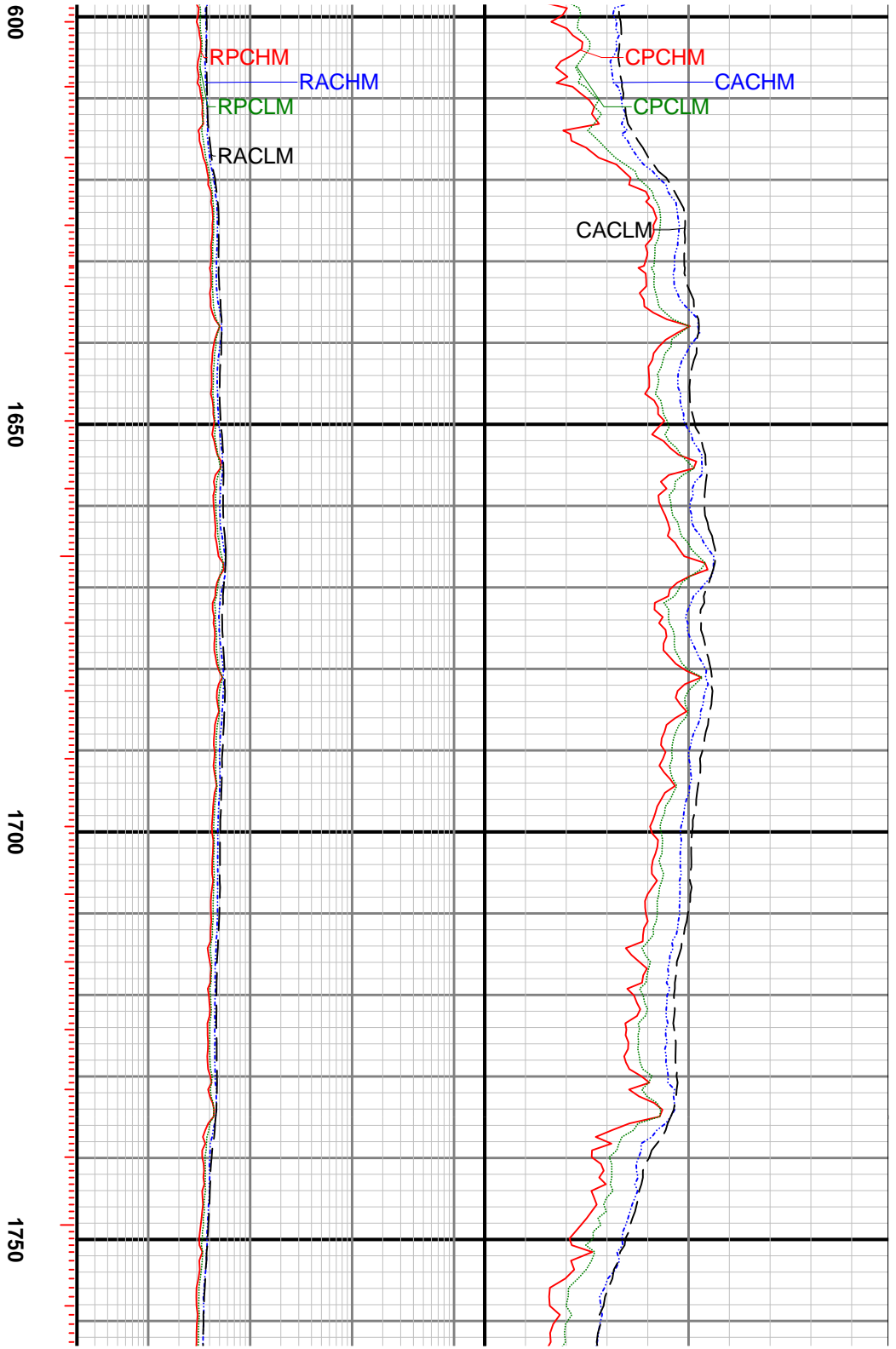
Depth measurements were obtained from a depth control system not supplied or operated by Baker Hughes. Due to lack of control by Baker Hughes logging engineers, depth calibrations and measurements could not be independently verified.

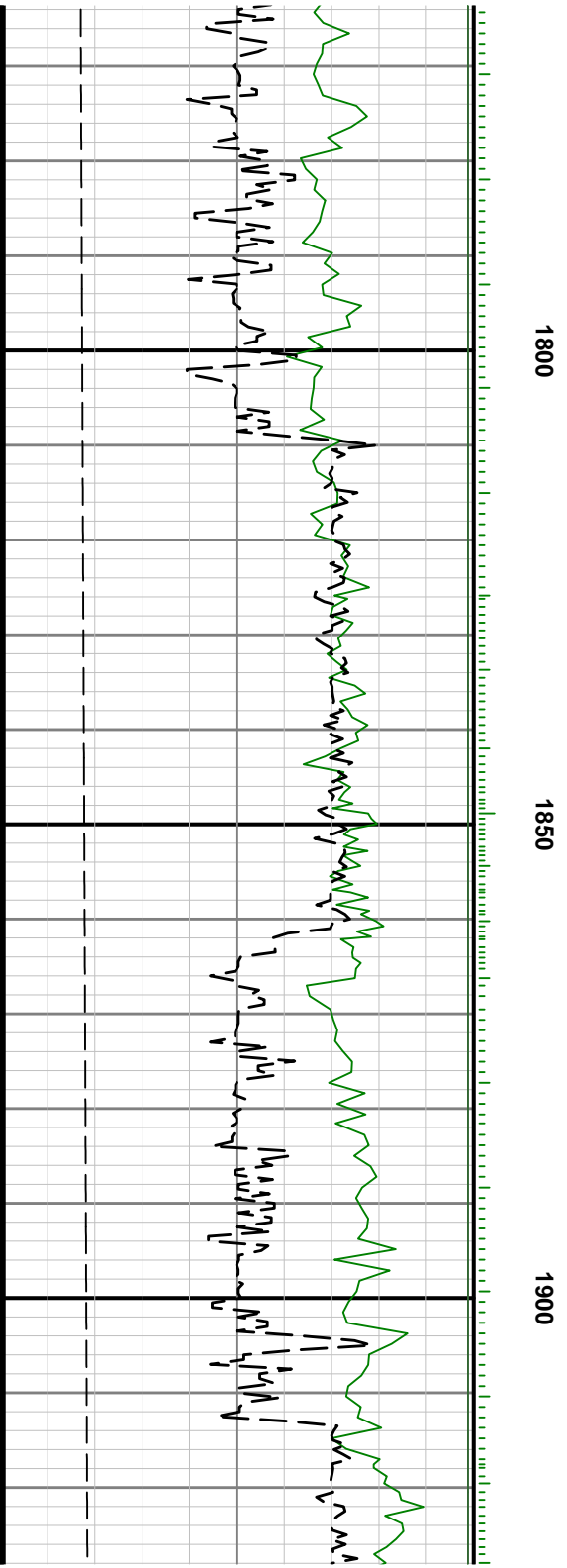
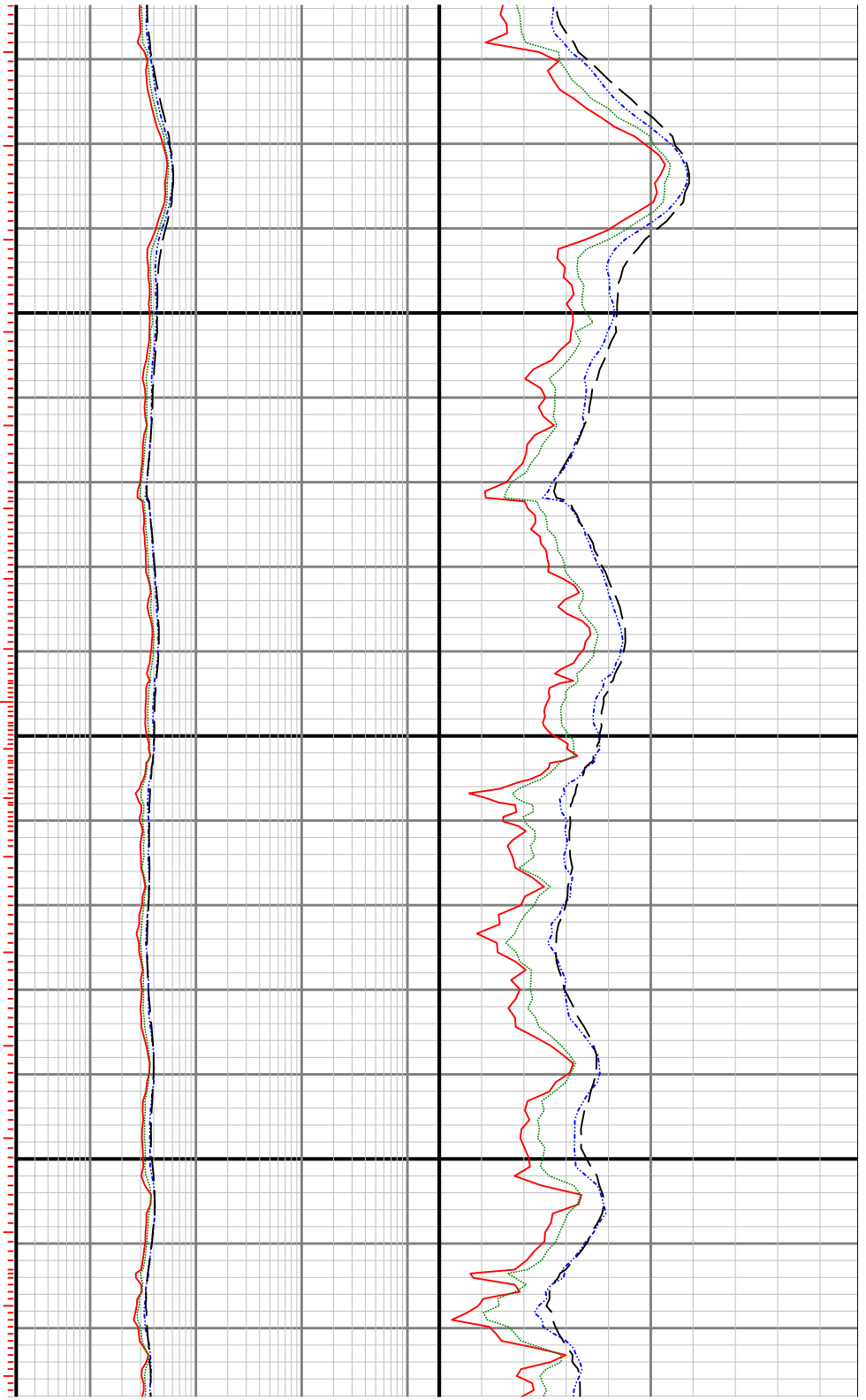
2

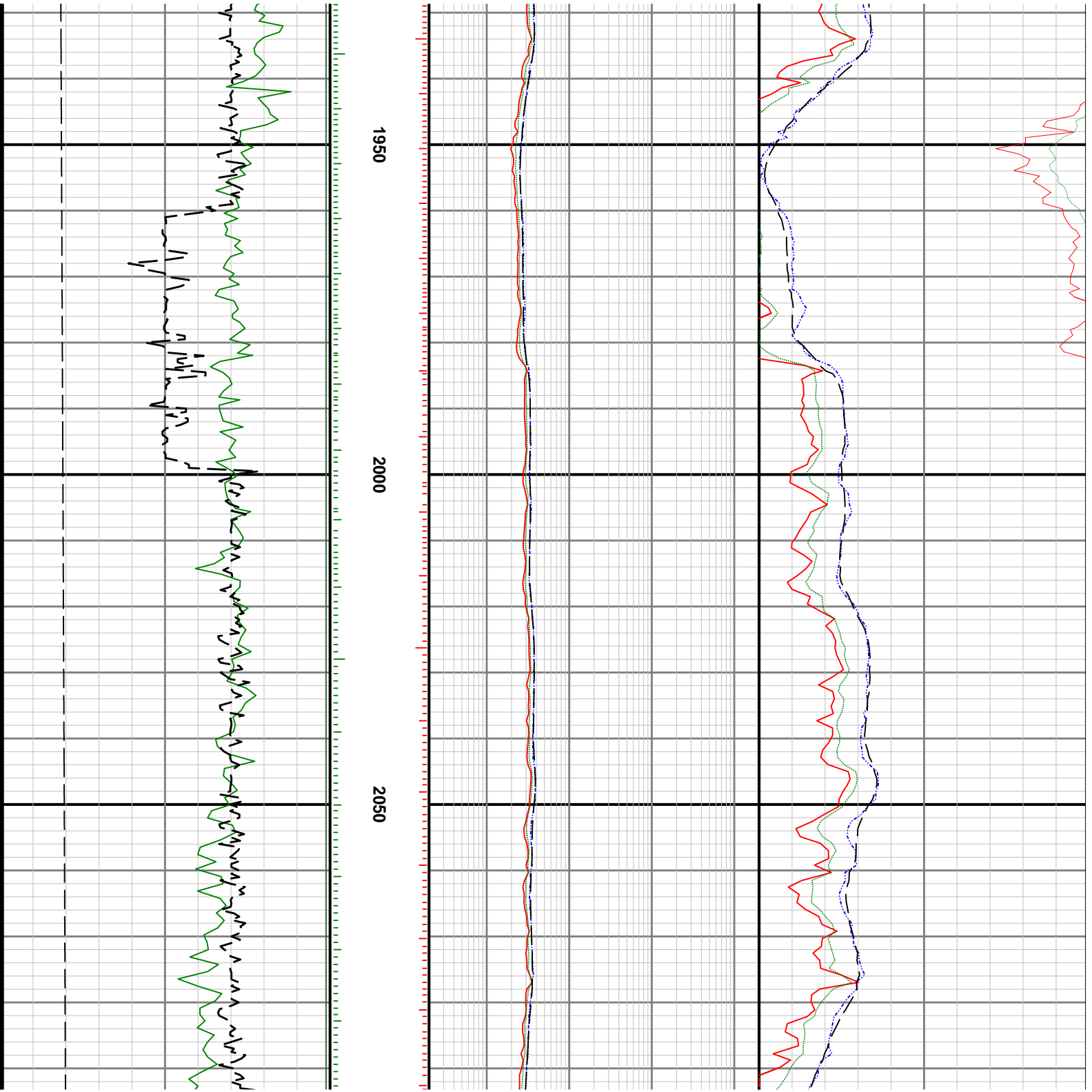
Baker Hughes Run 2 utilized 6 3/4 inch OnTrak services (Multiple Propagation Resistivity, Gamma Ray and Directional) to log the interval from 1588 to 6264 feet MD (1544 to 5739 feet TVD).

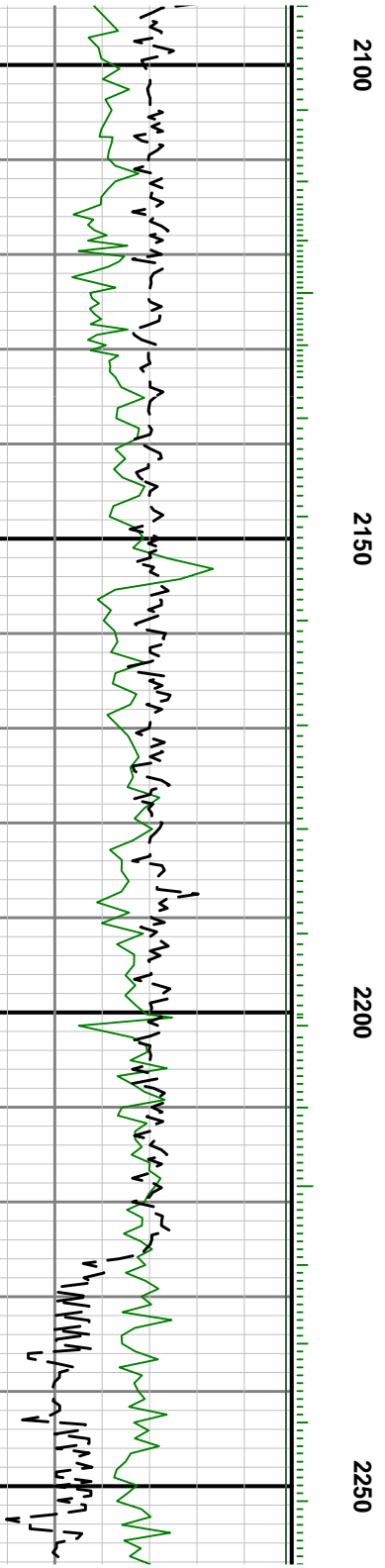
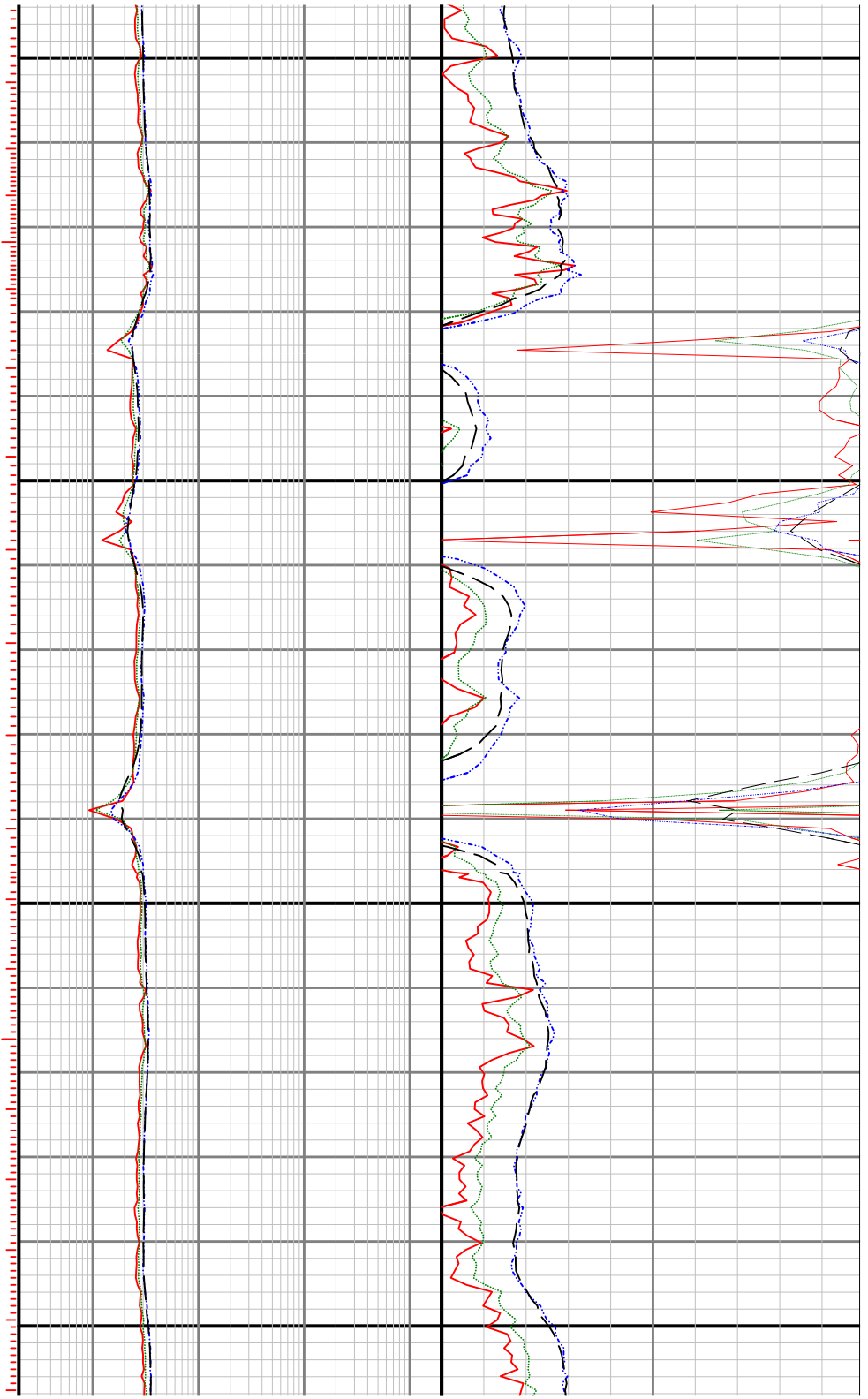
Number	Measured Depth (ft)	Hole Section (in)	Run No.	Remark
1	6265.00	8.500	2	The interval from 6264 to 11867 feet MD (5739 to 6193 feet TVD) was not logged due to sensor to bit offset at Section TD.

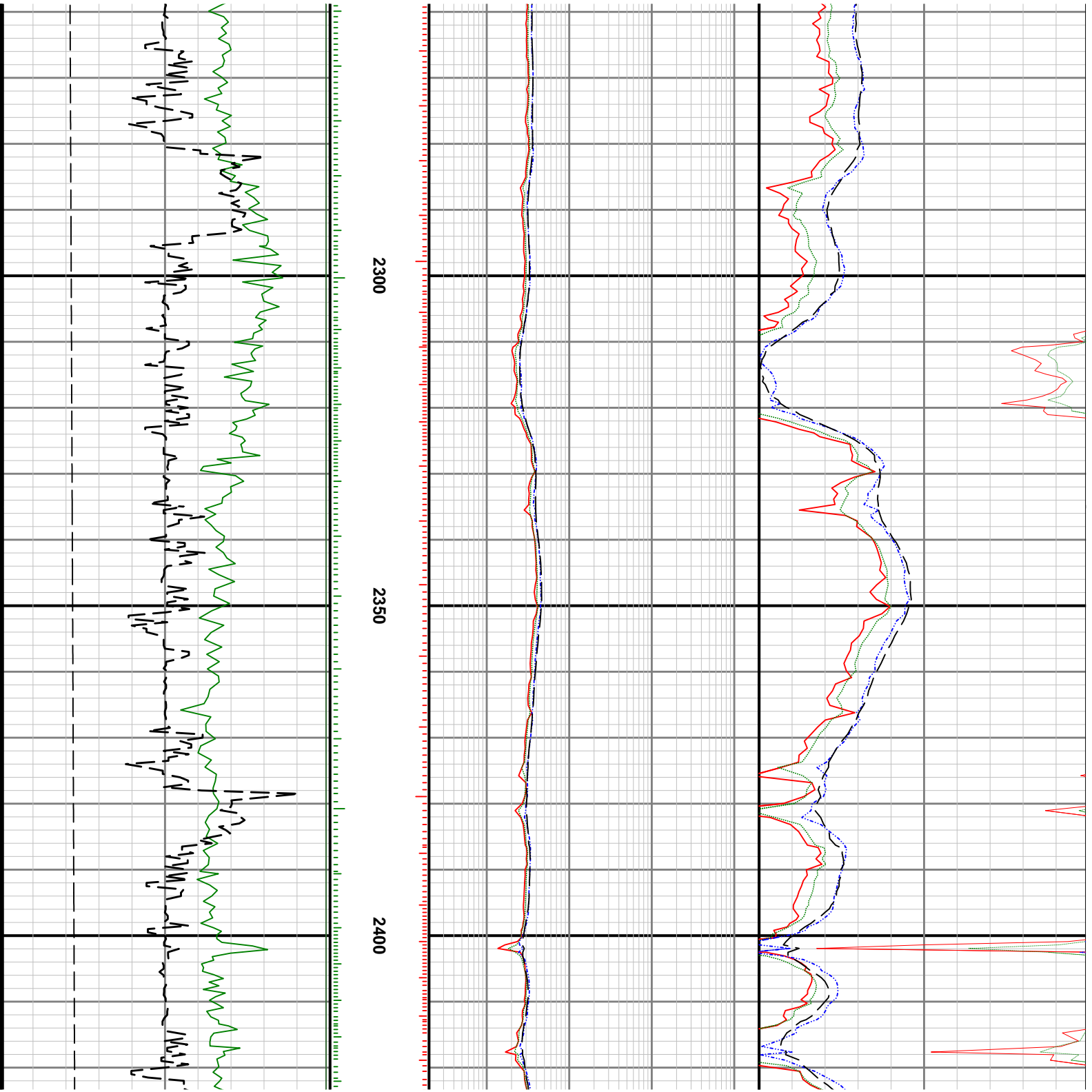


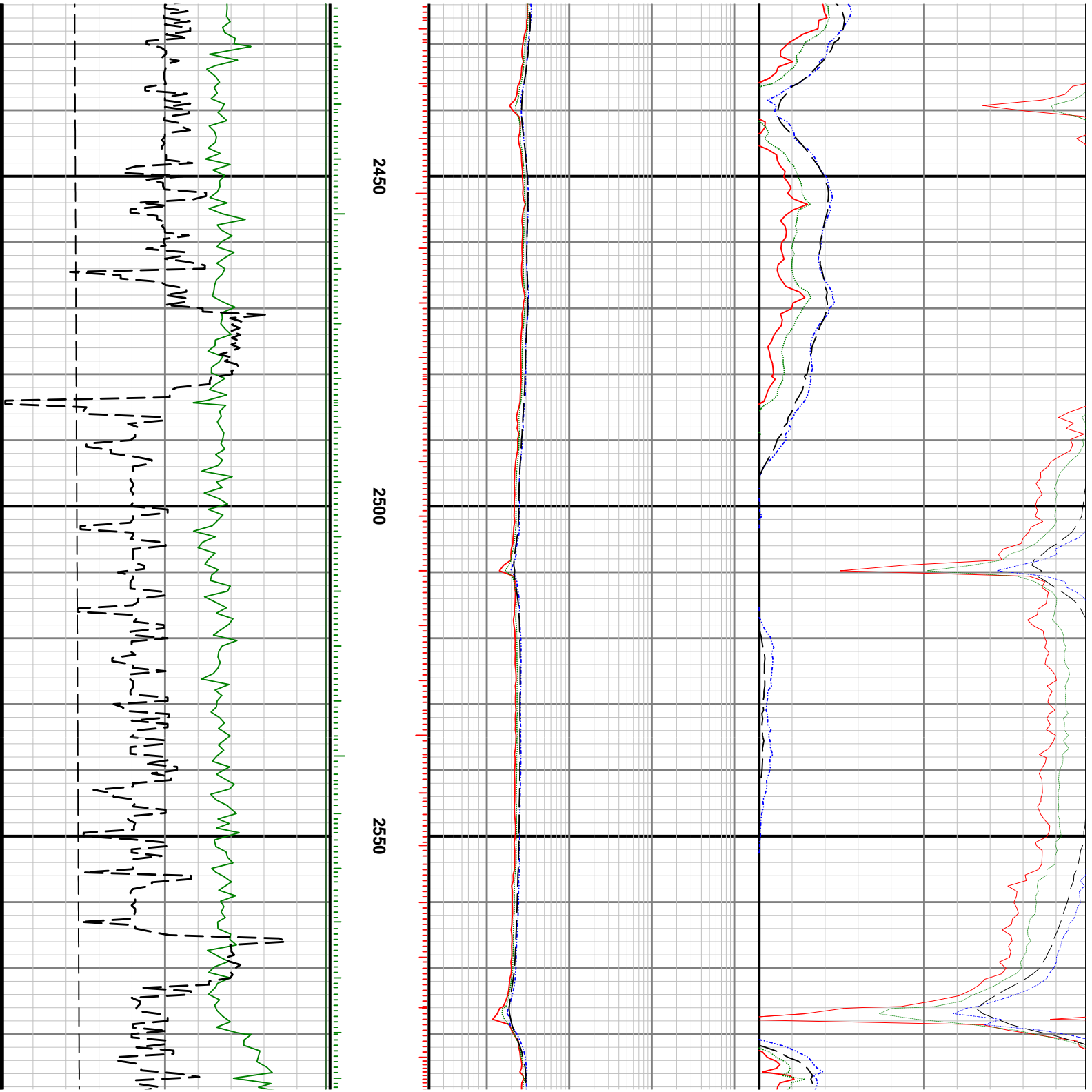


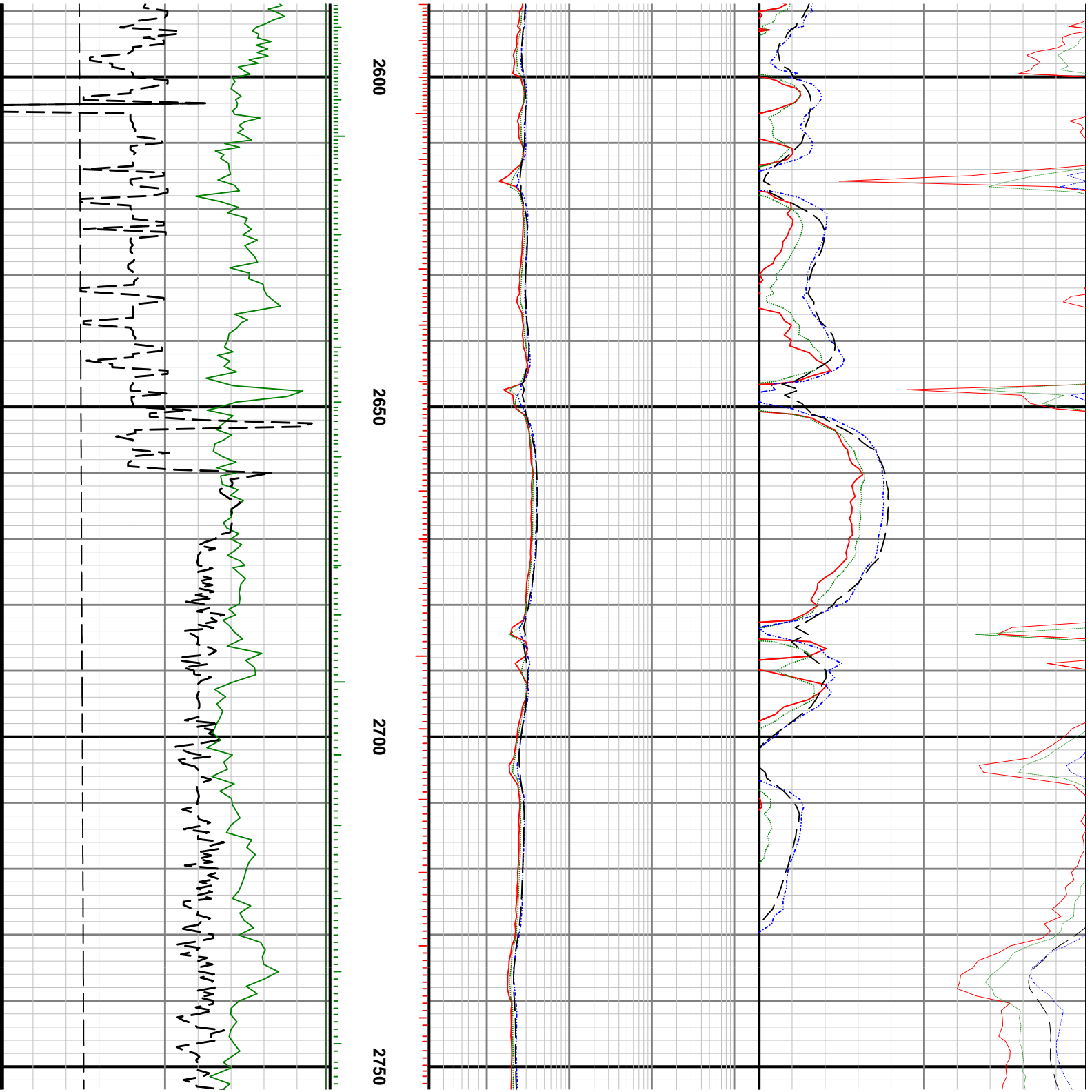


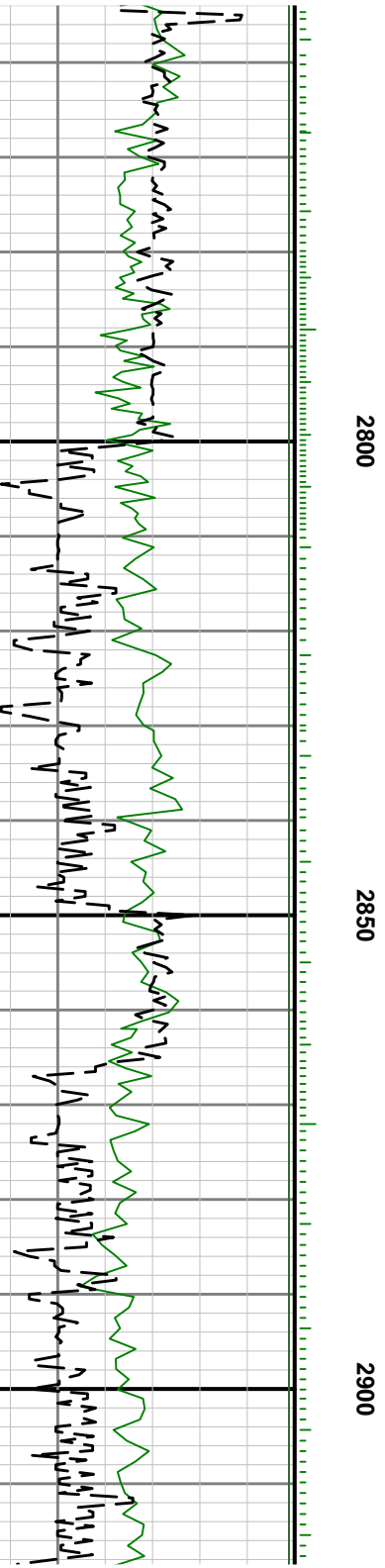
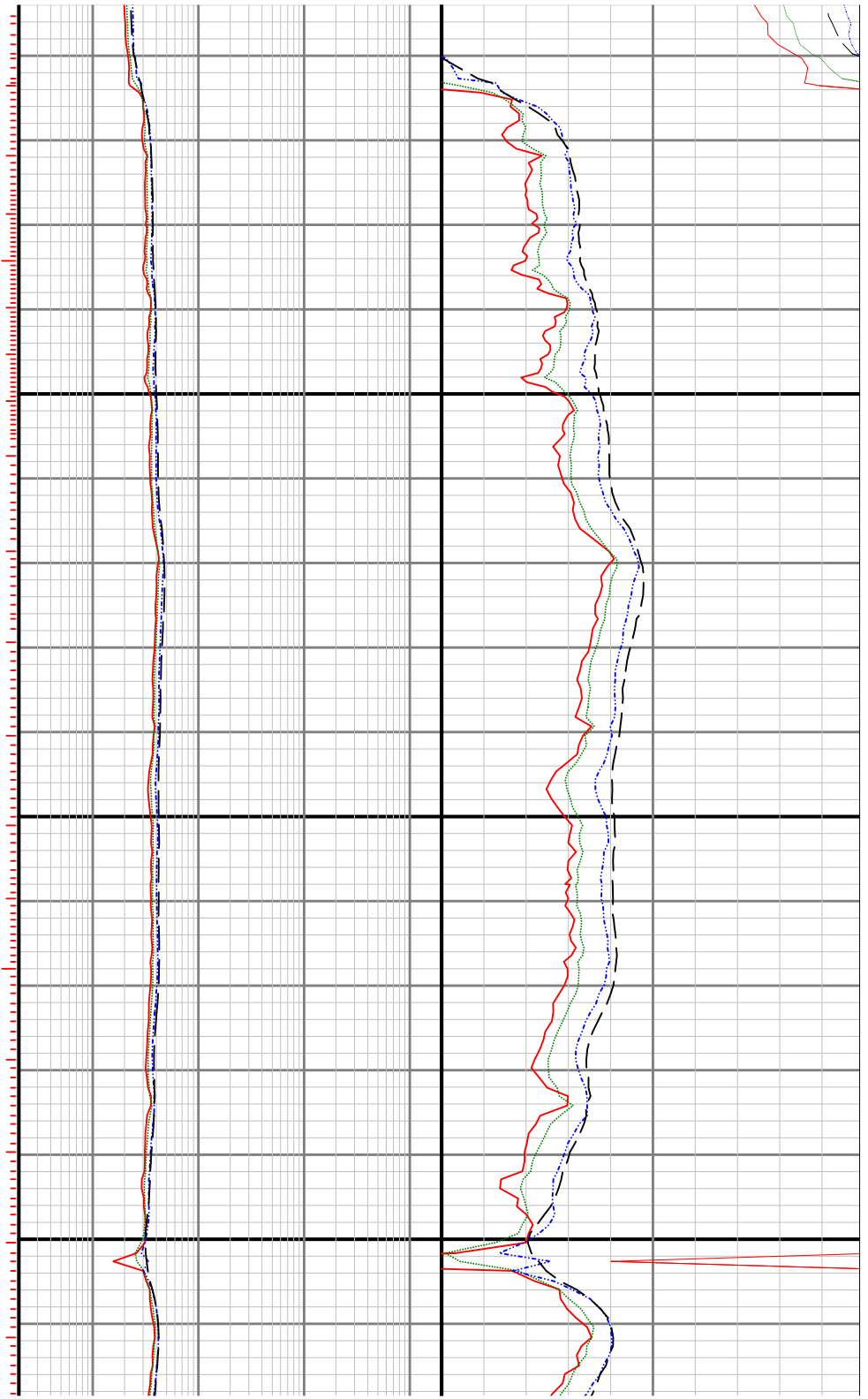


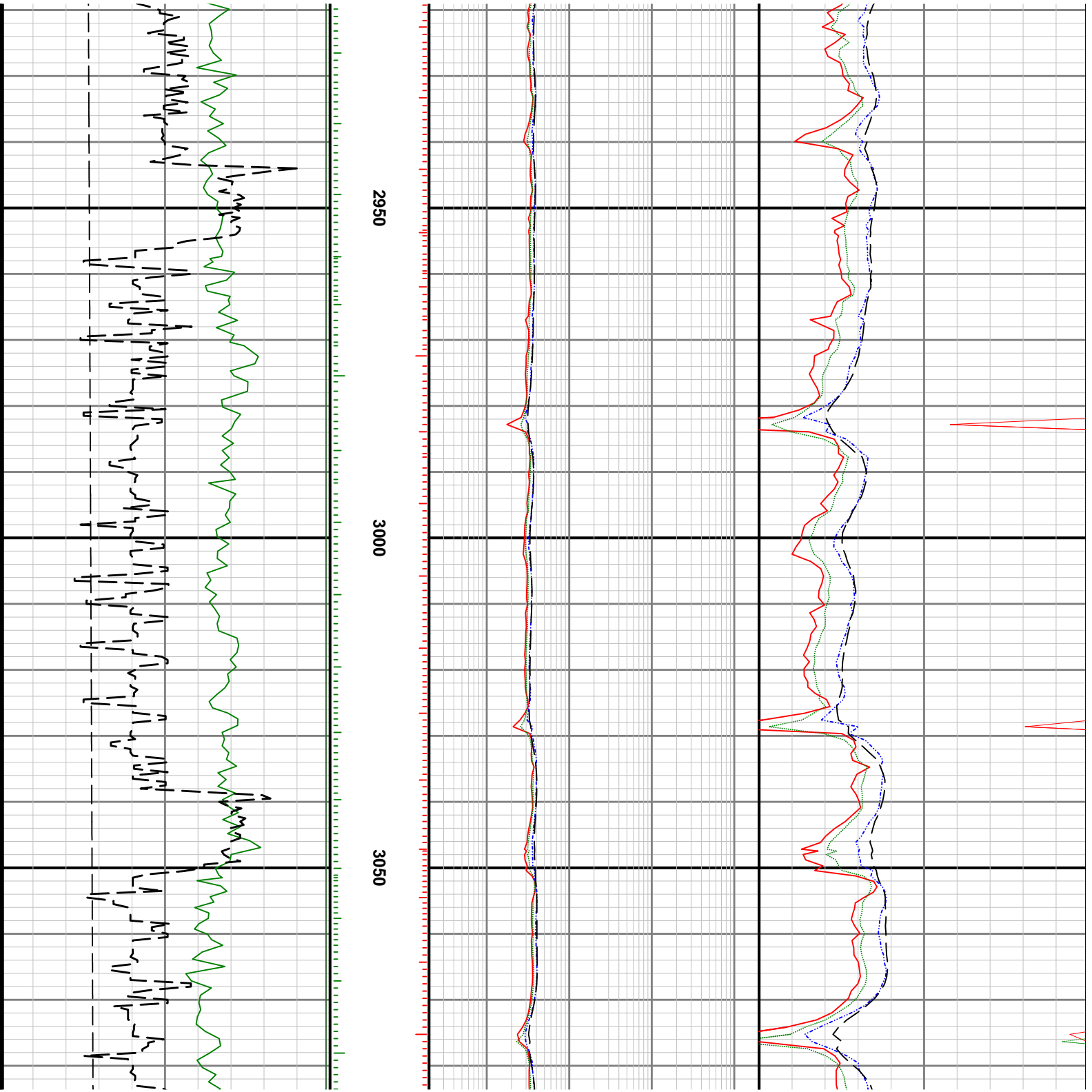


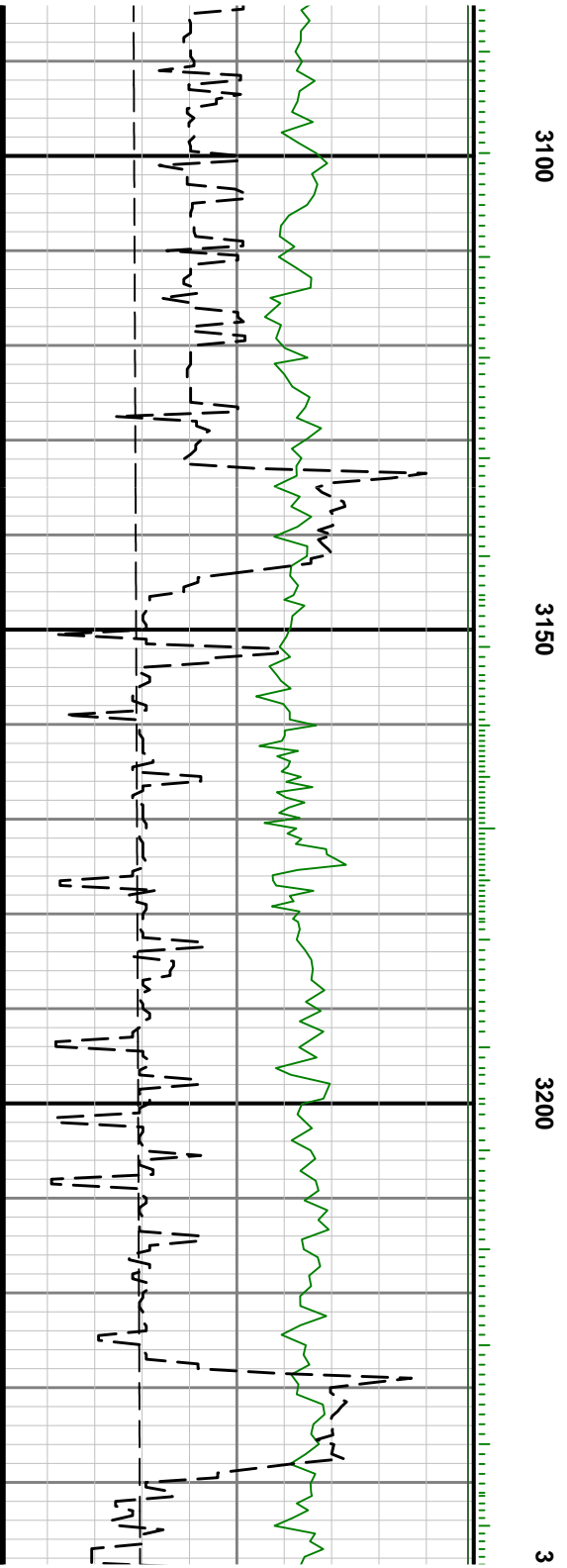
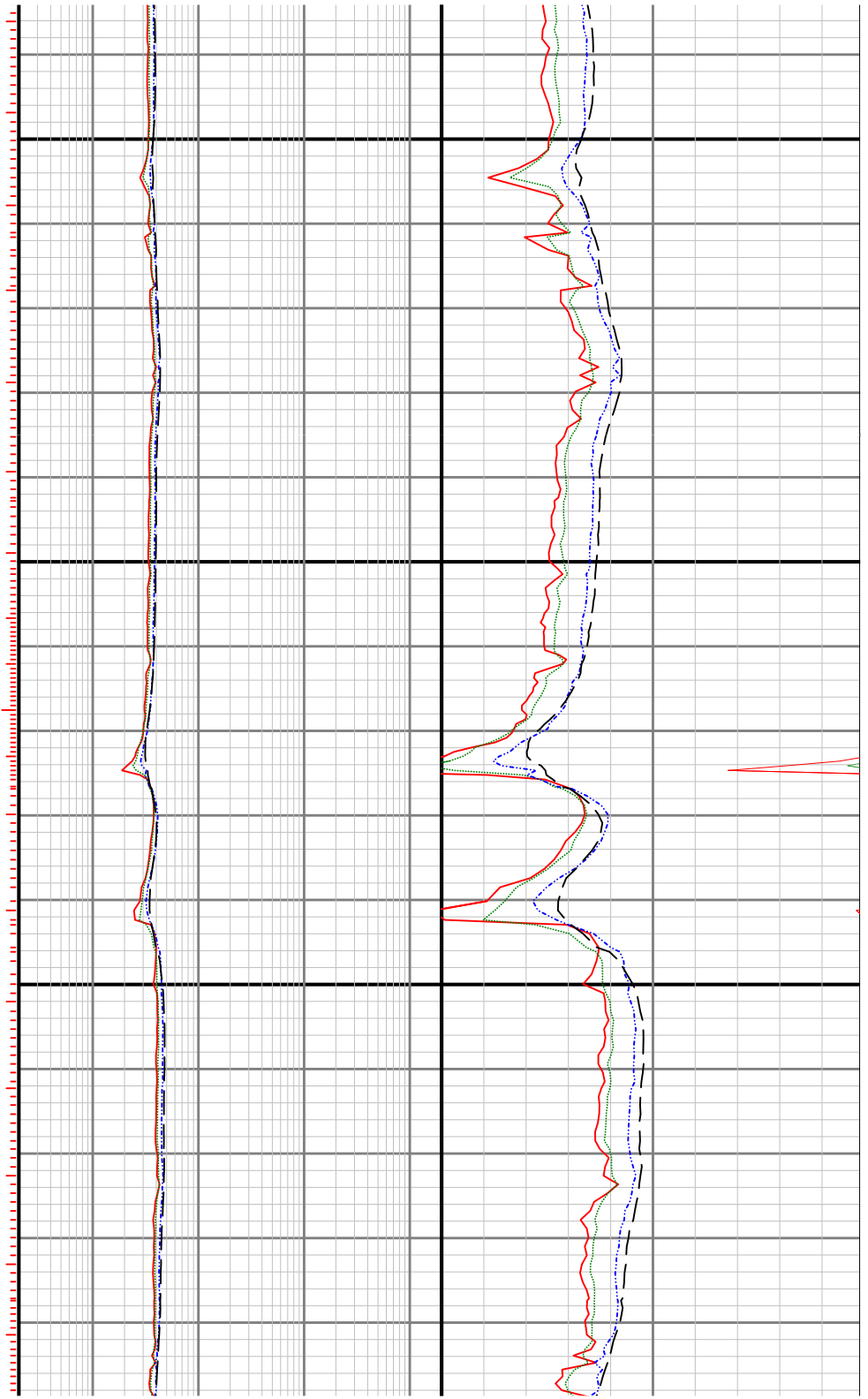


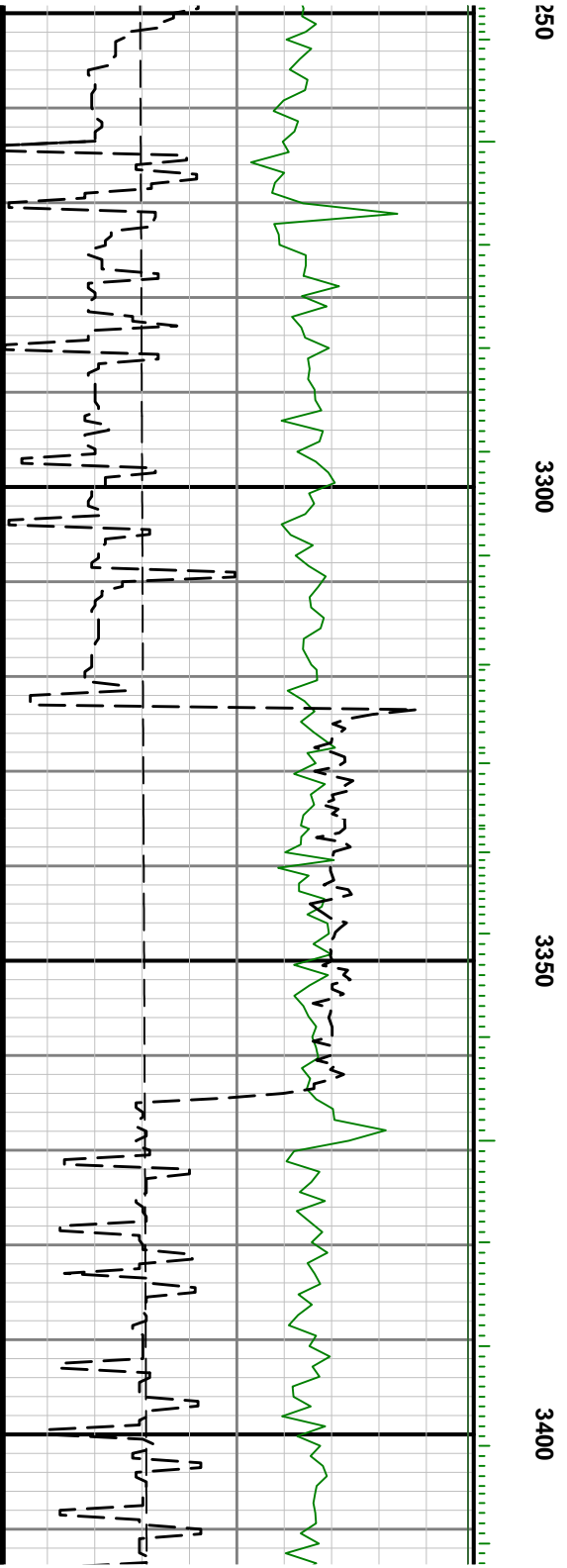
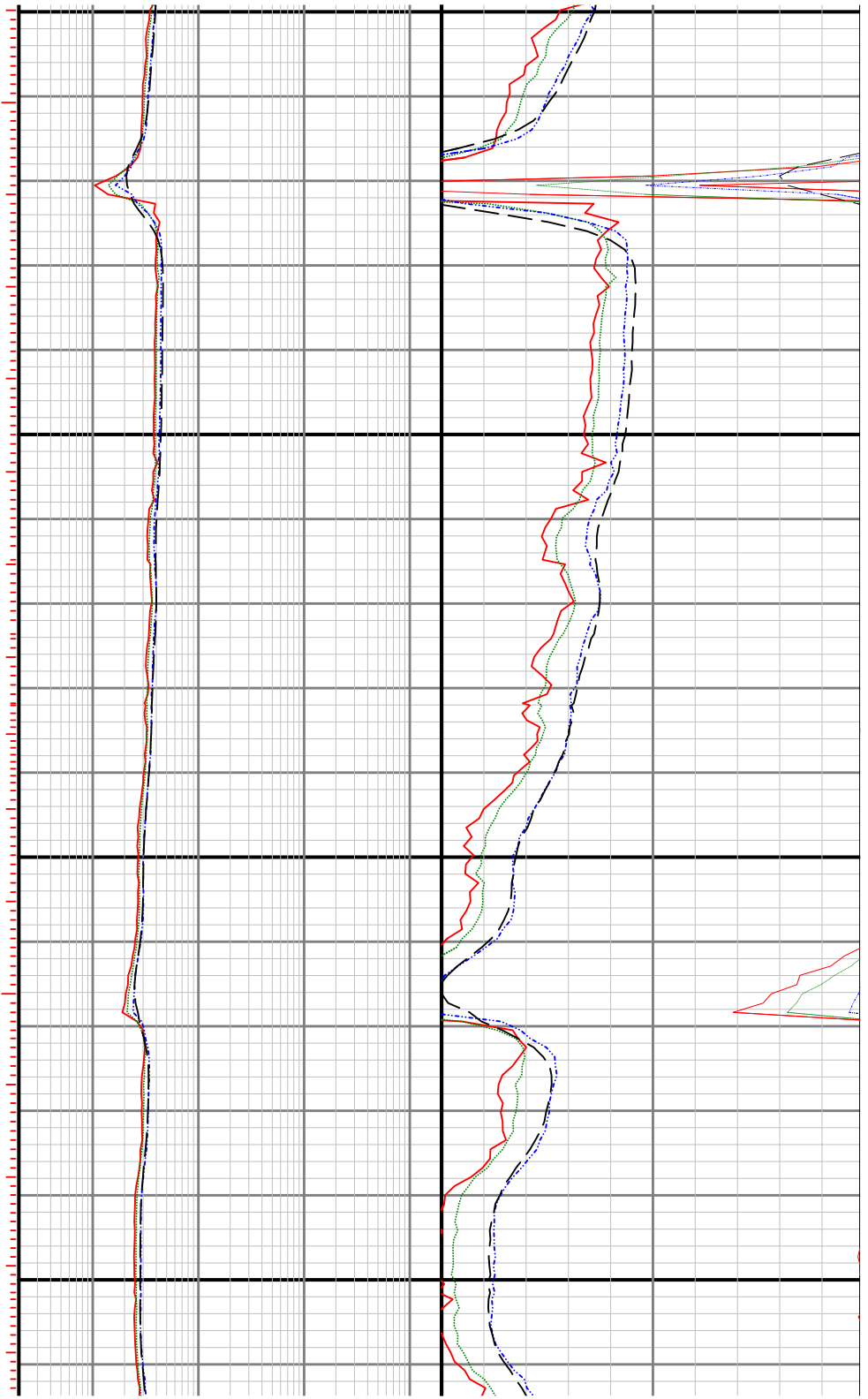


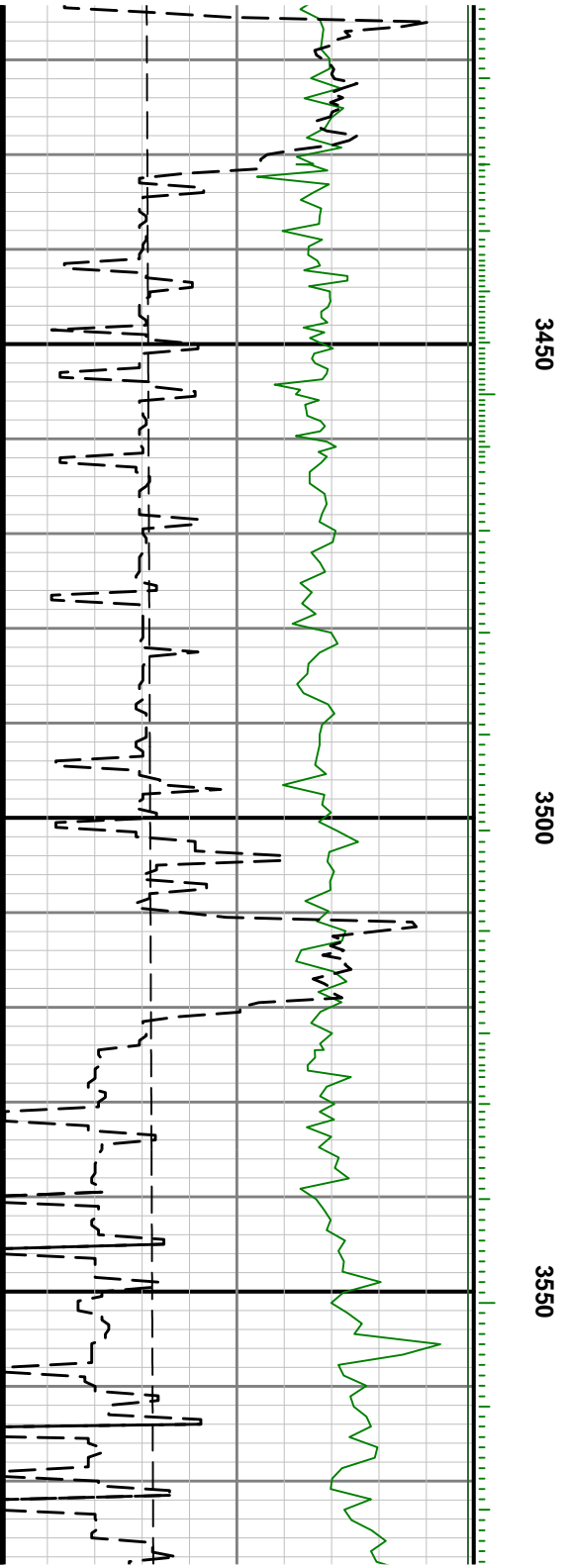
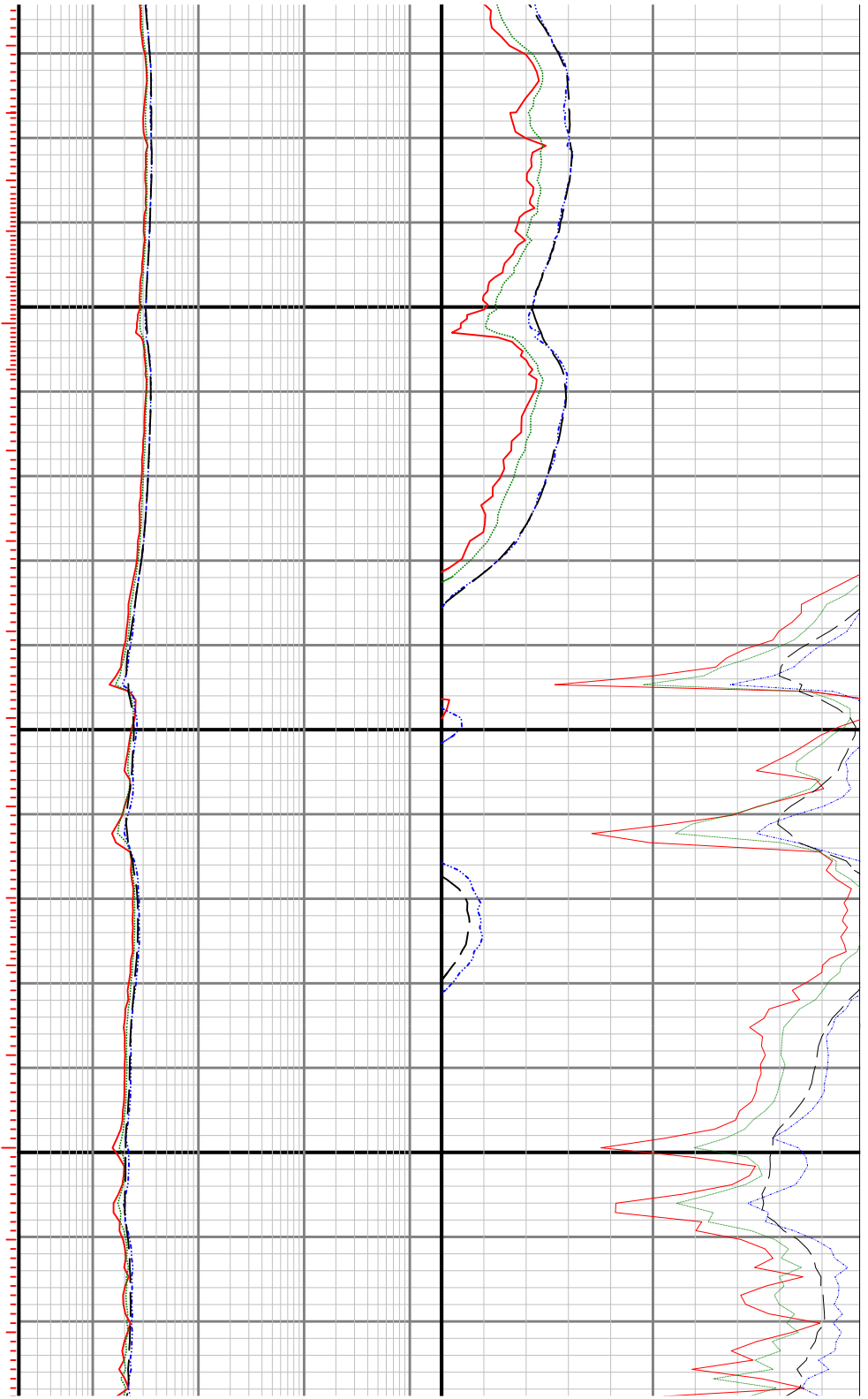


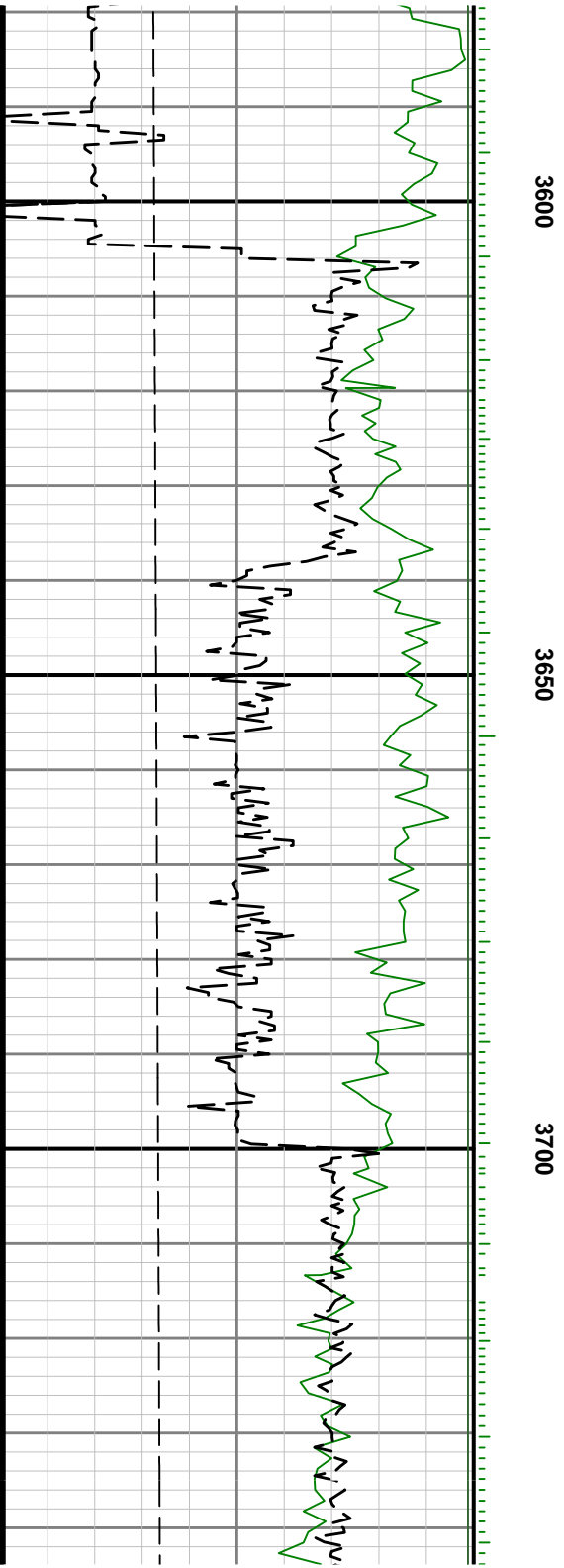
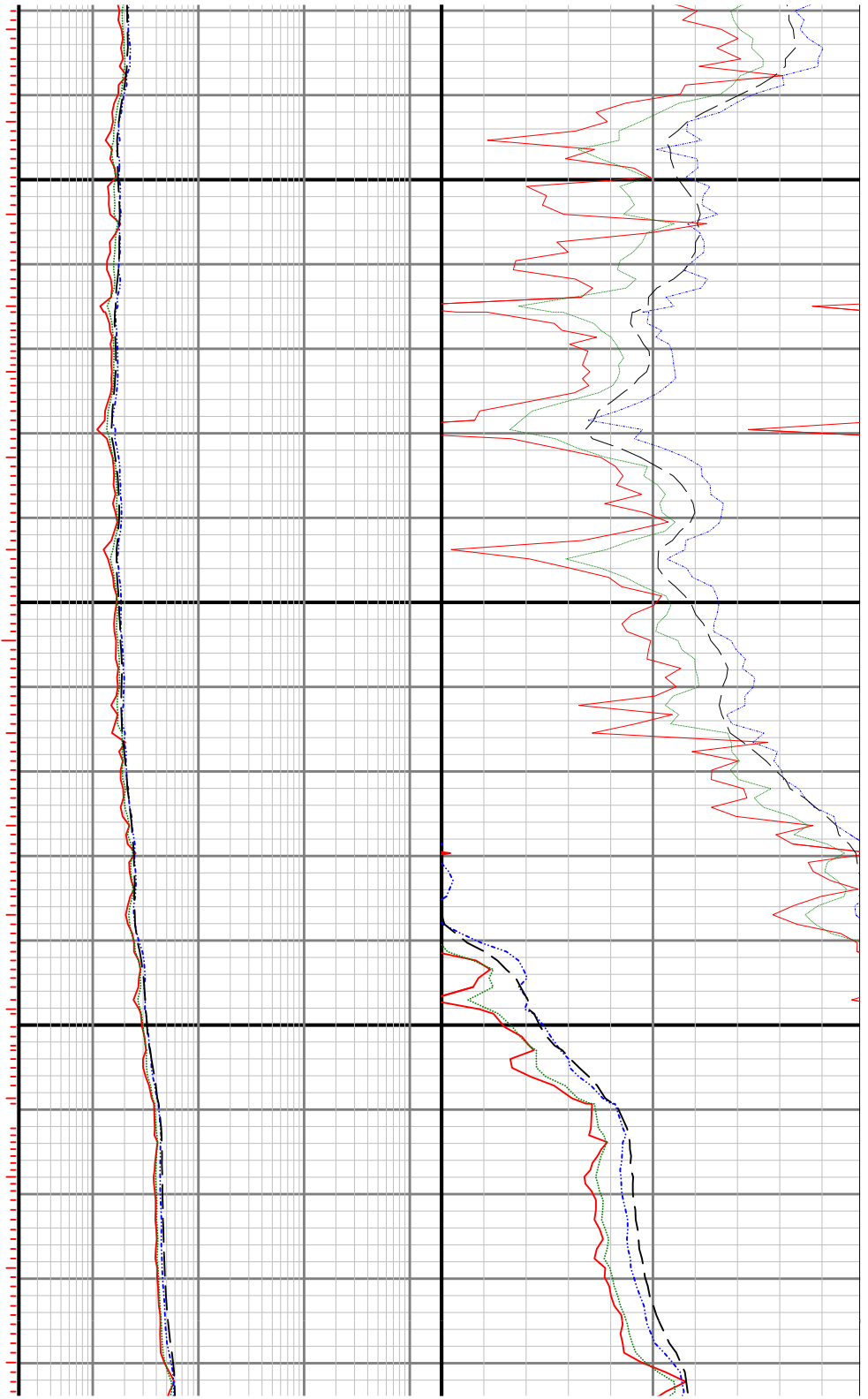


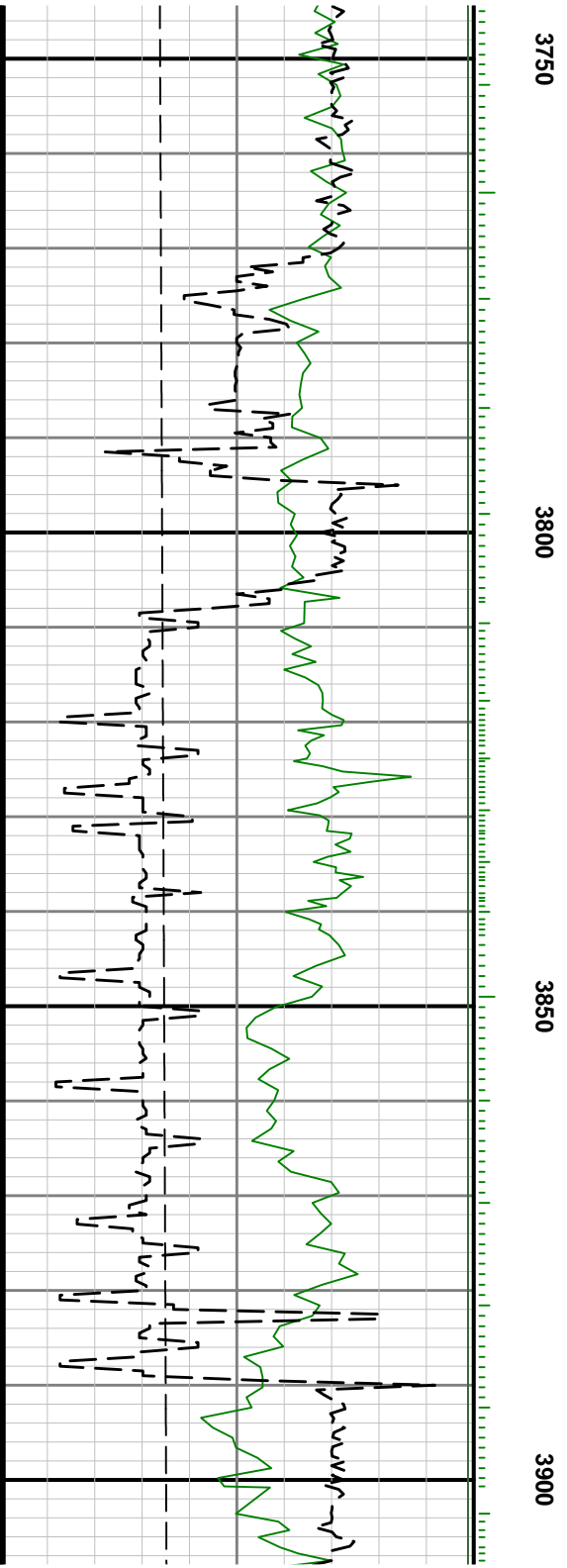
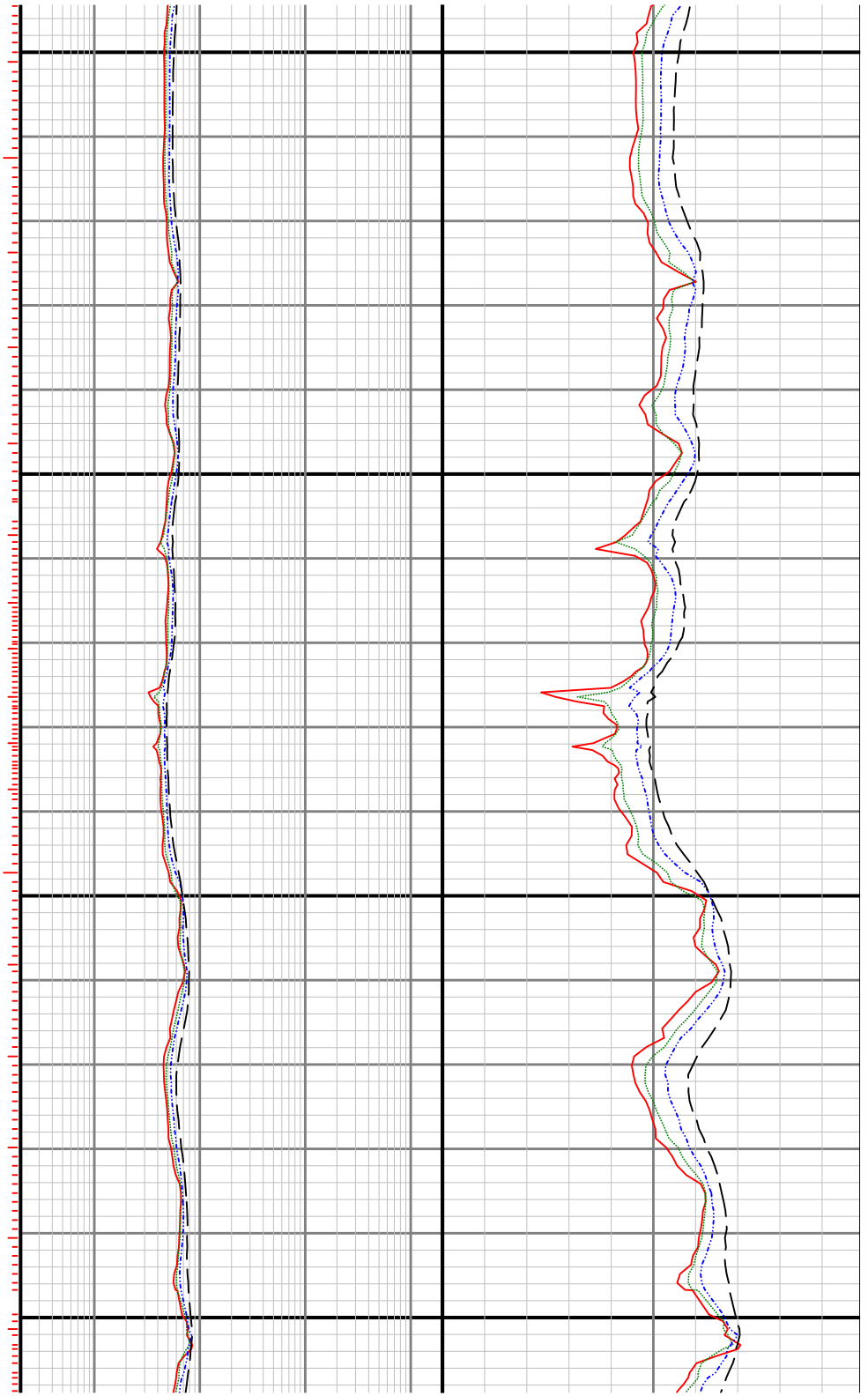


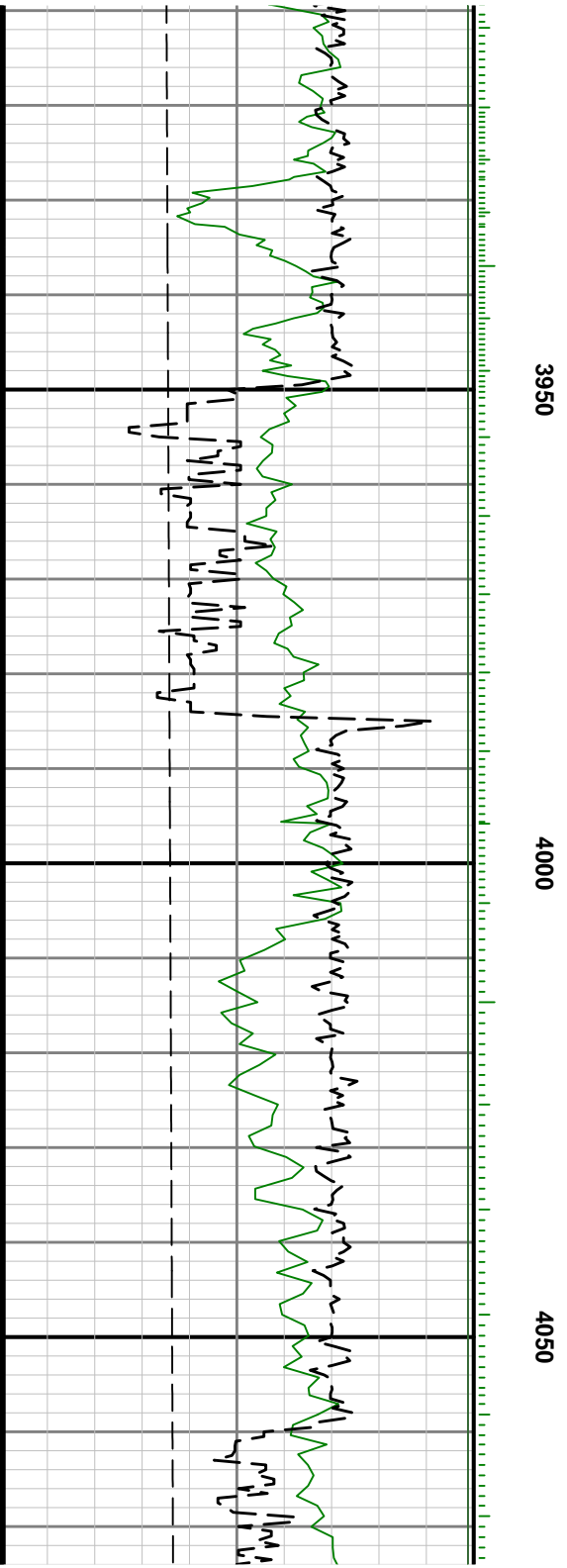
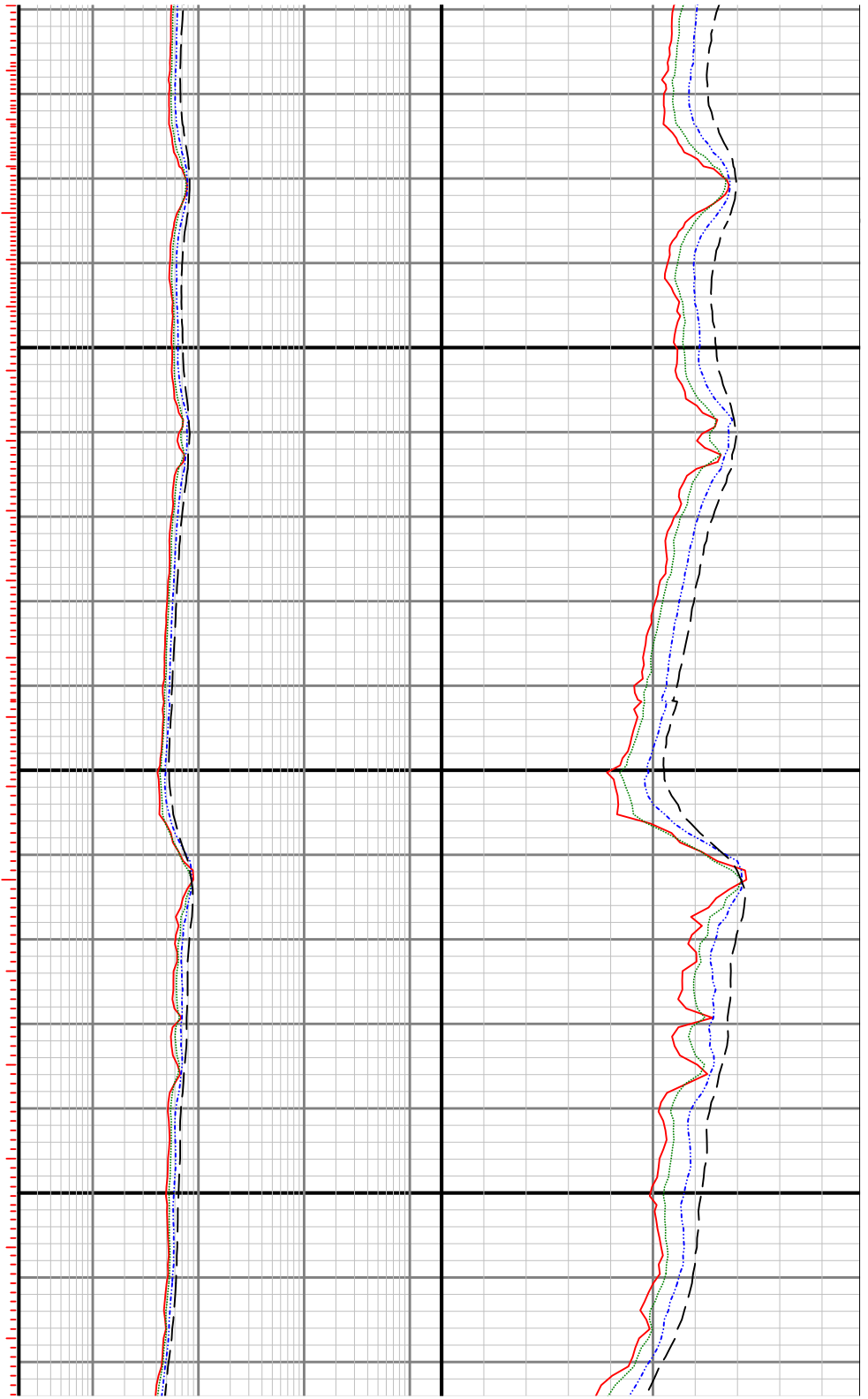


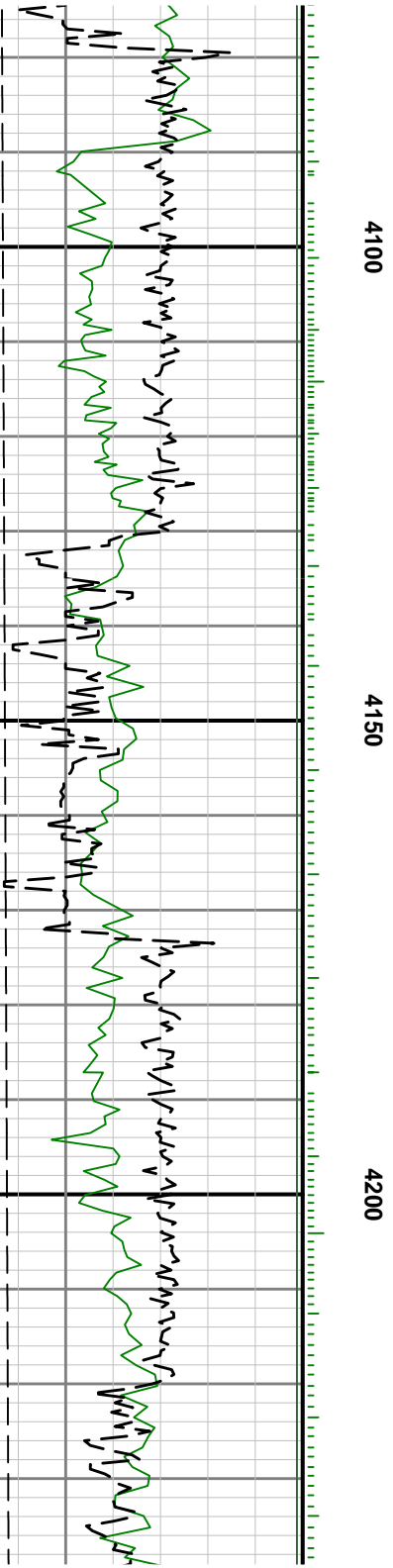
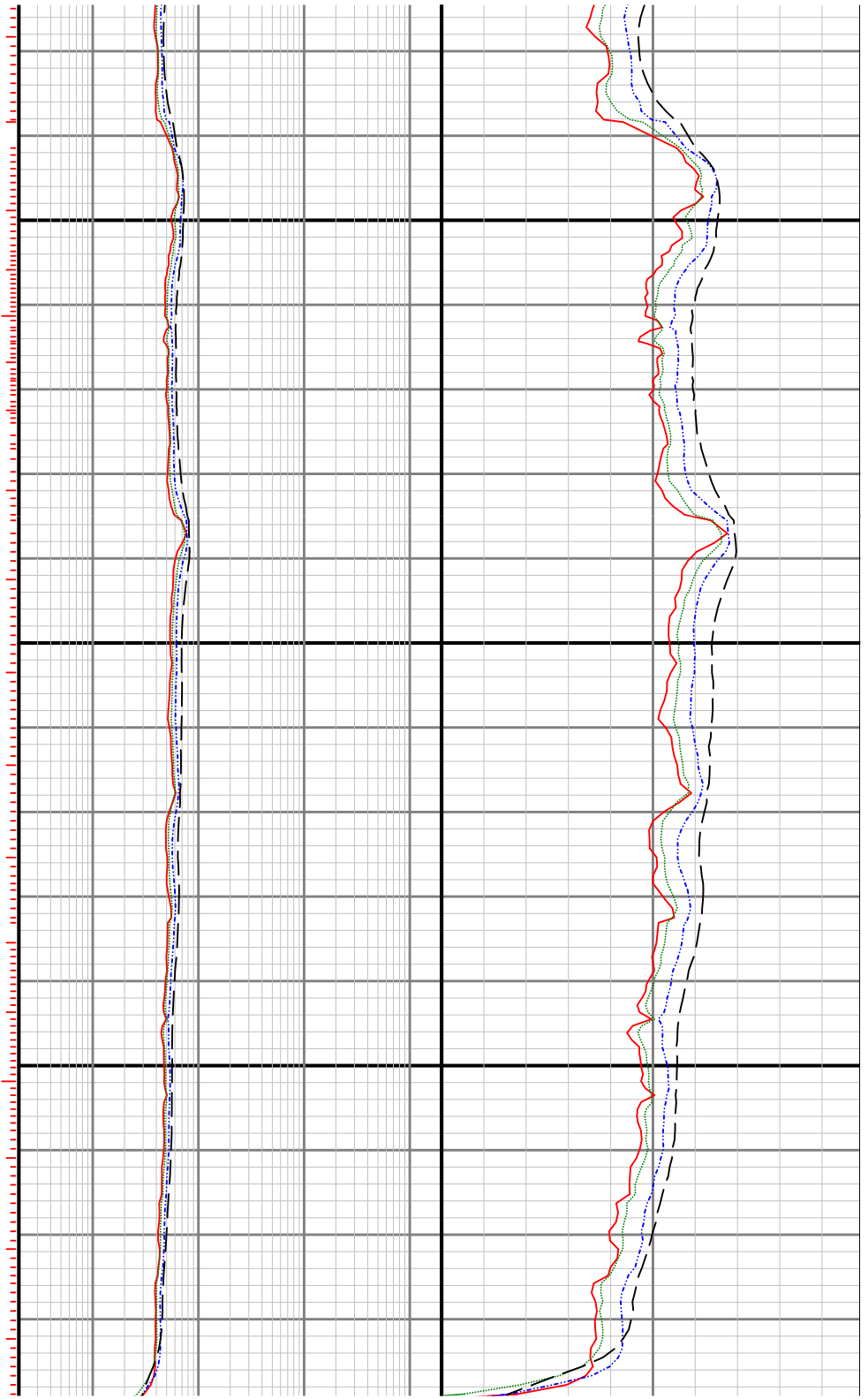


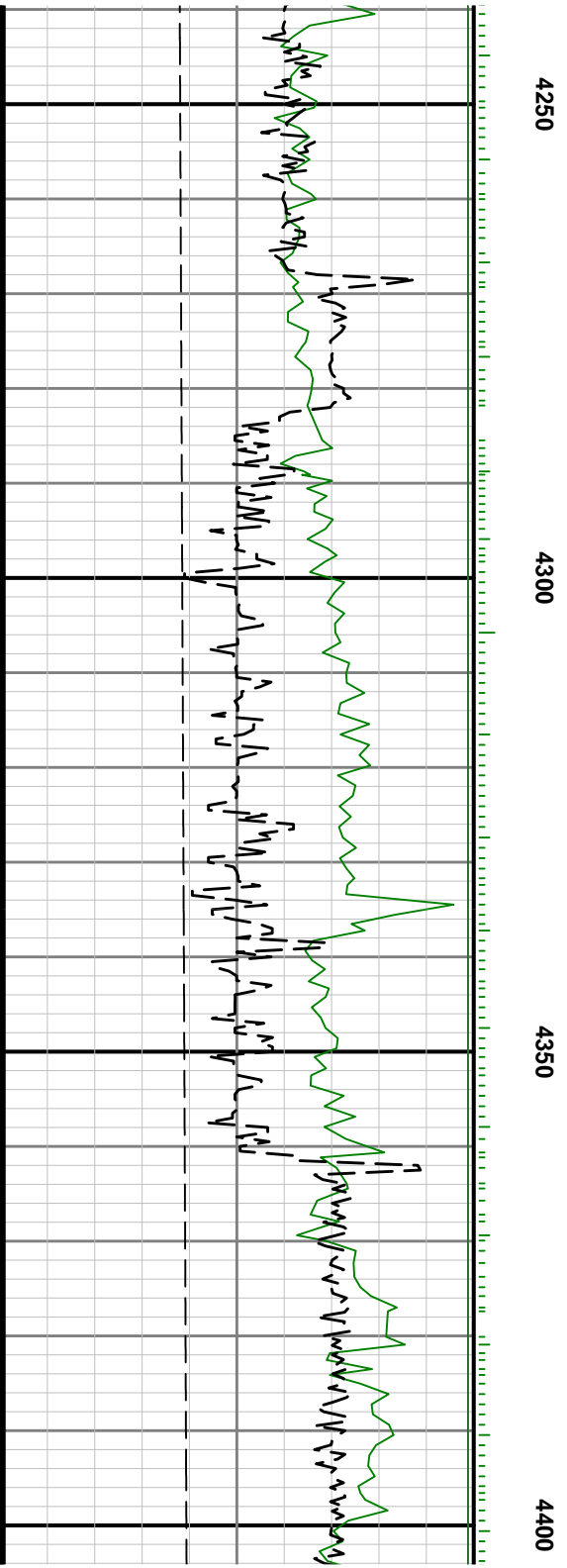


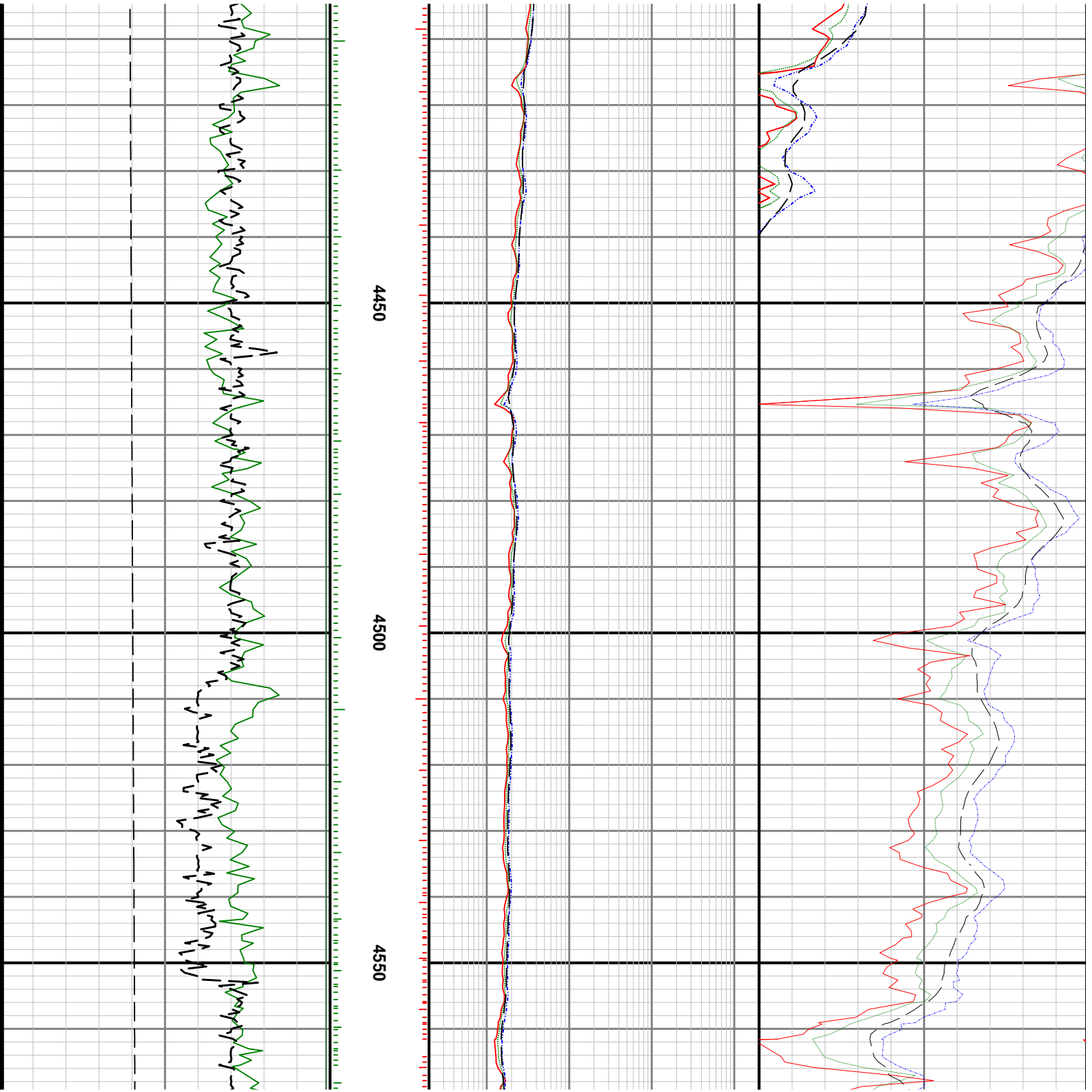


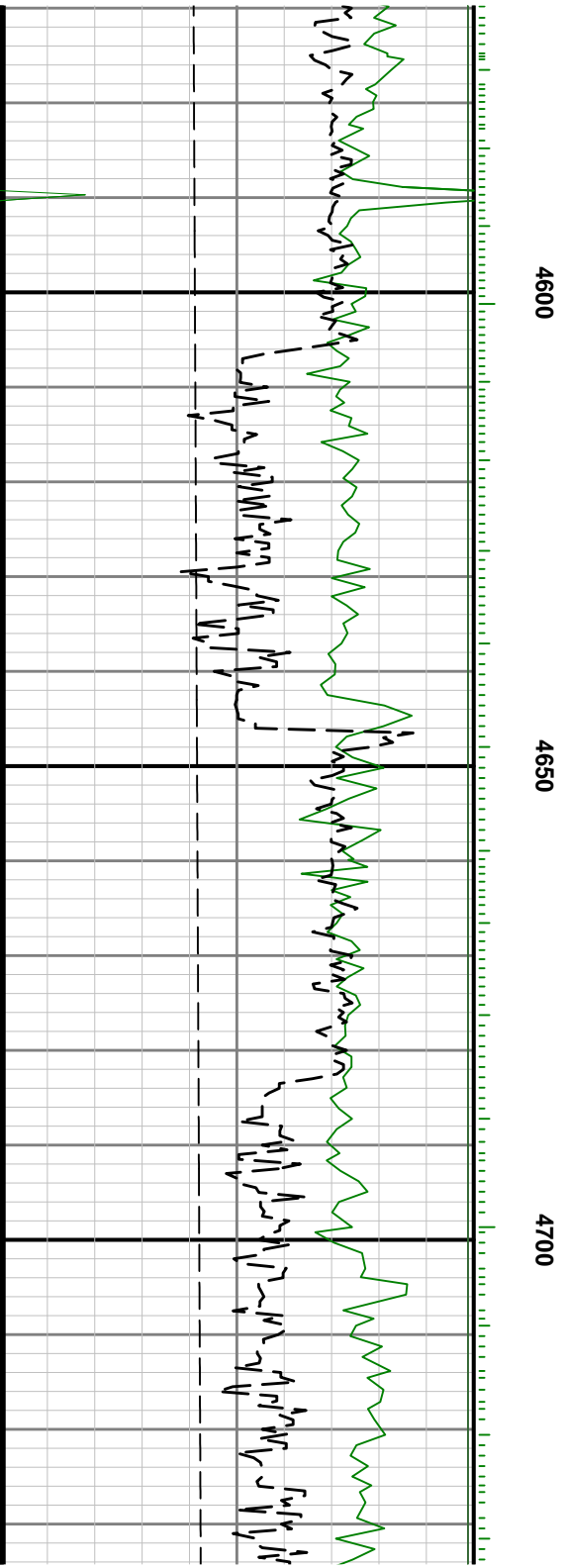
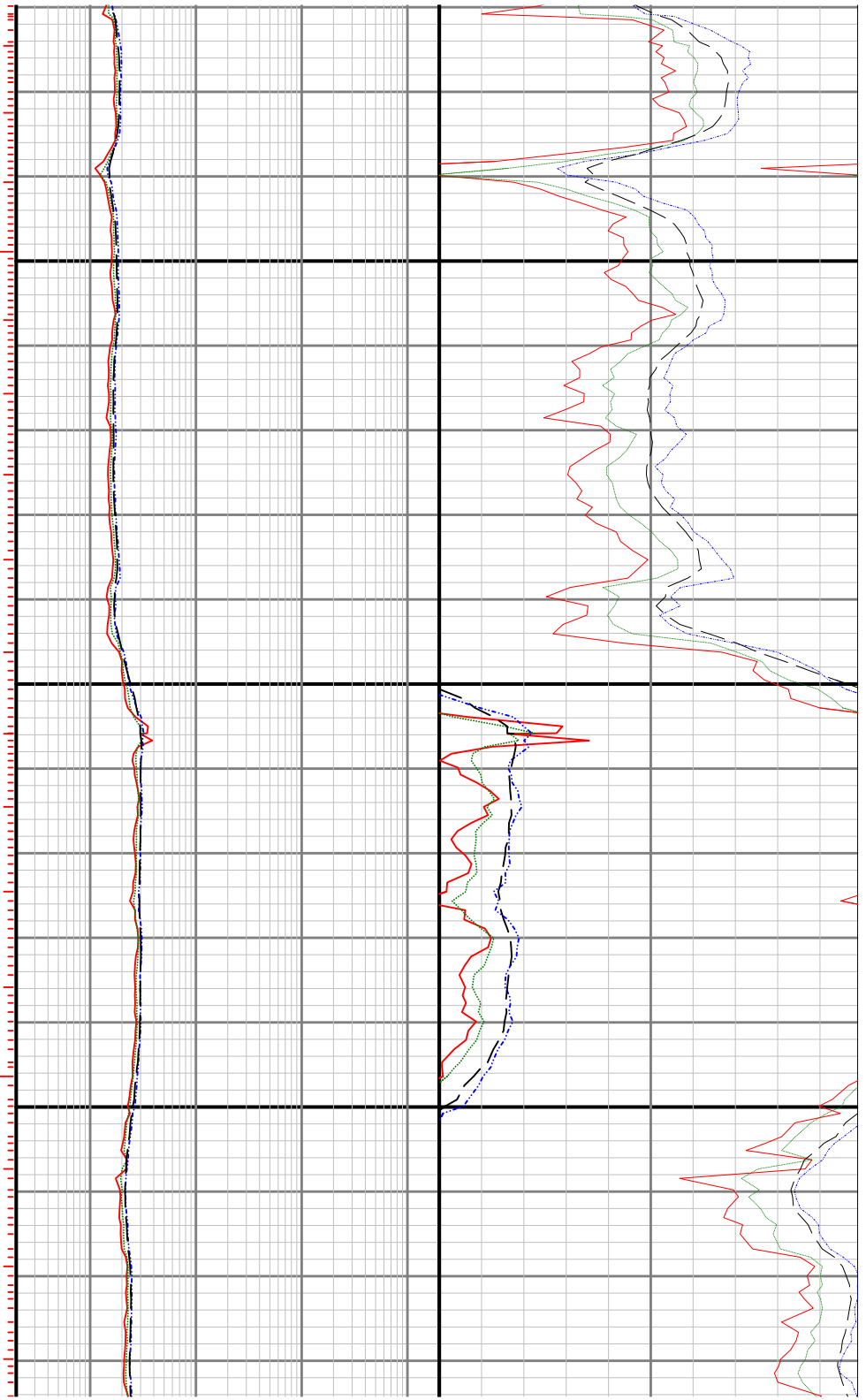


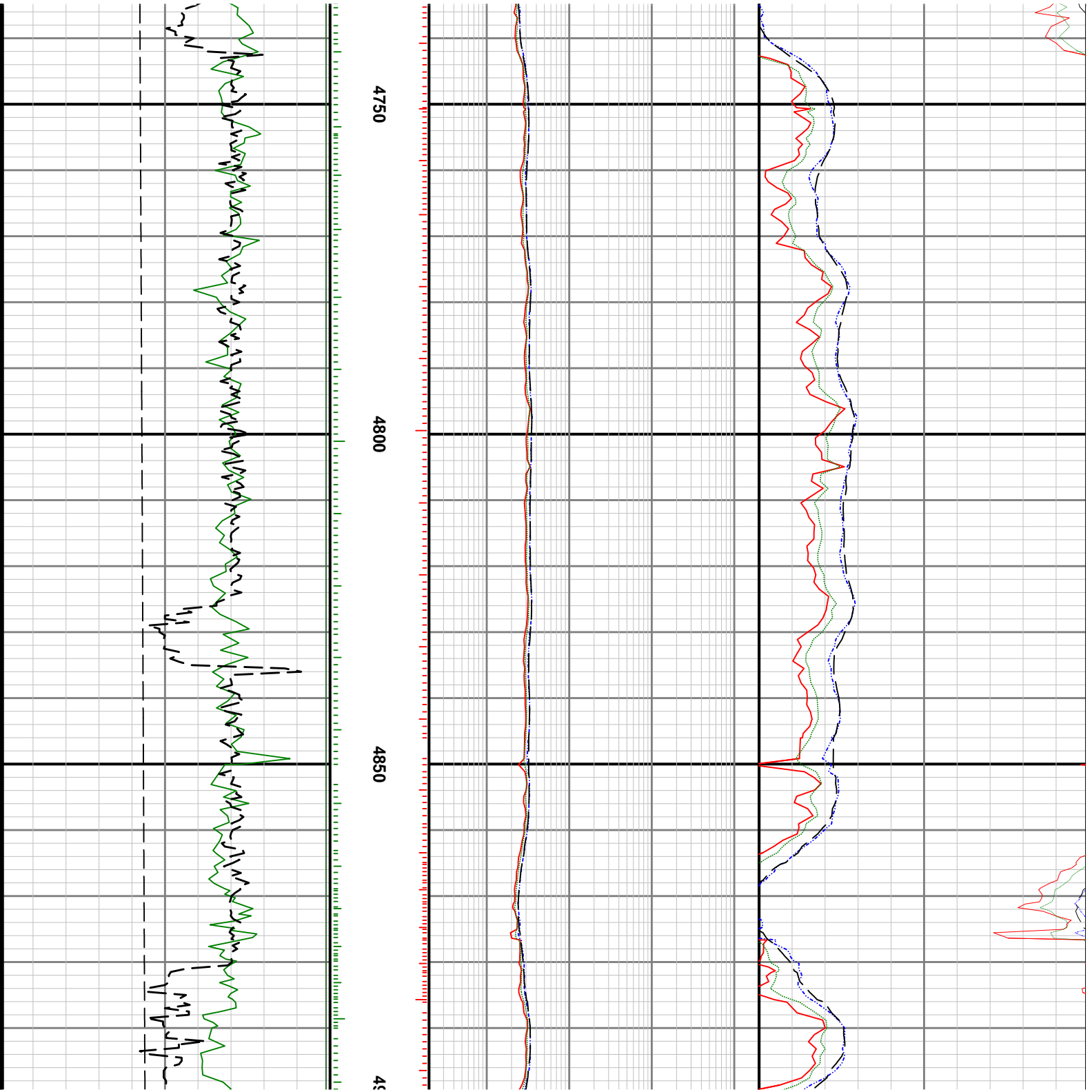


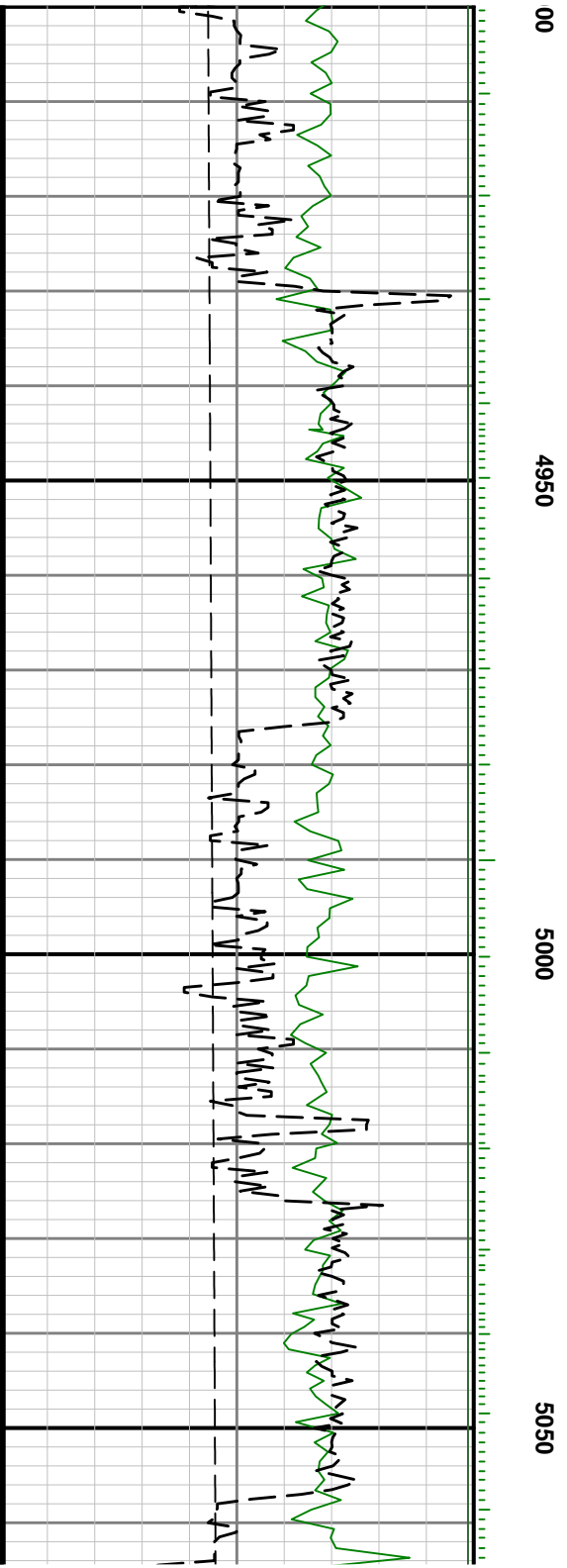
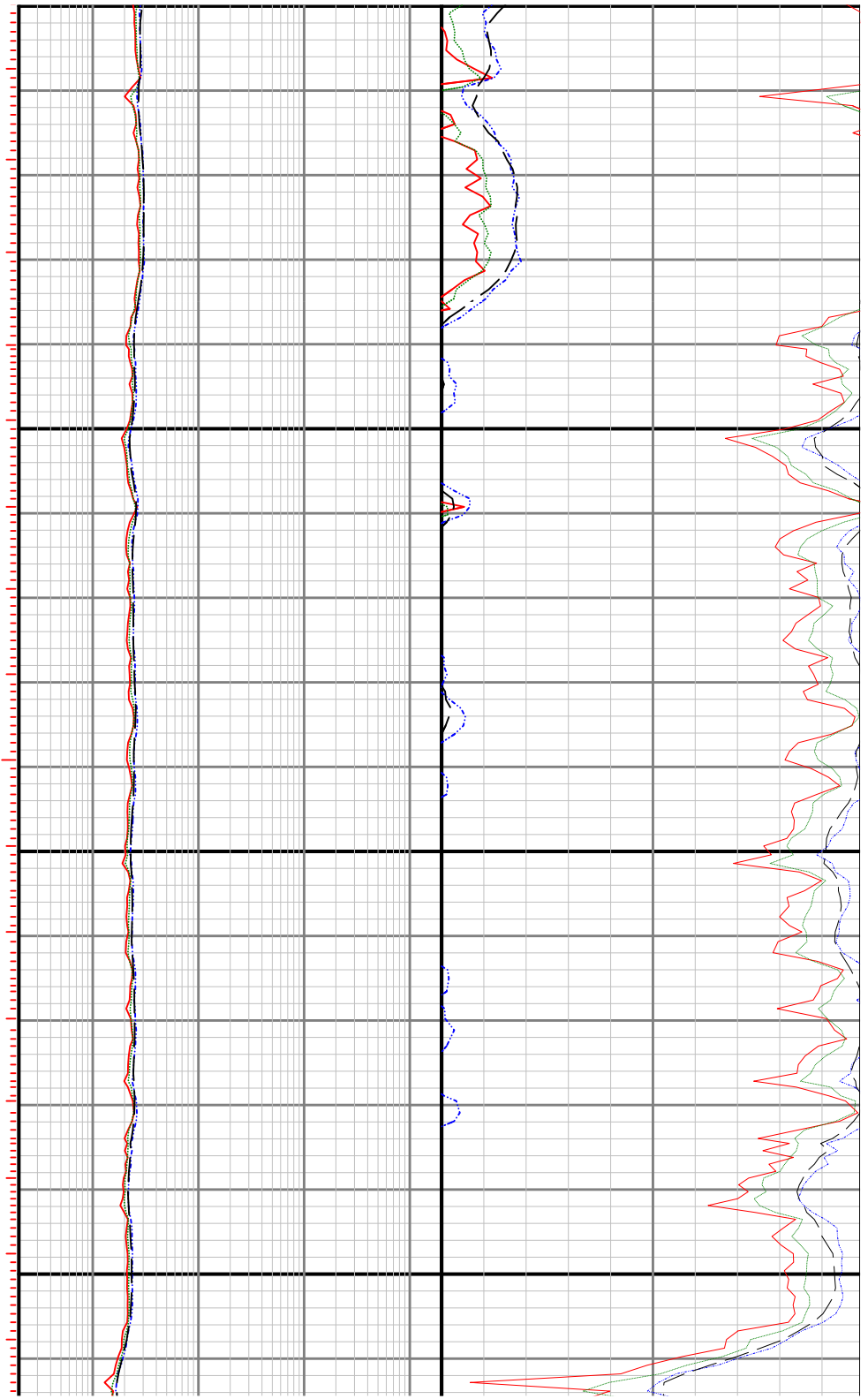


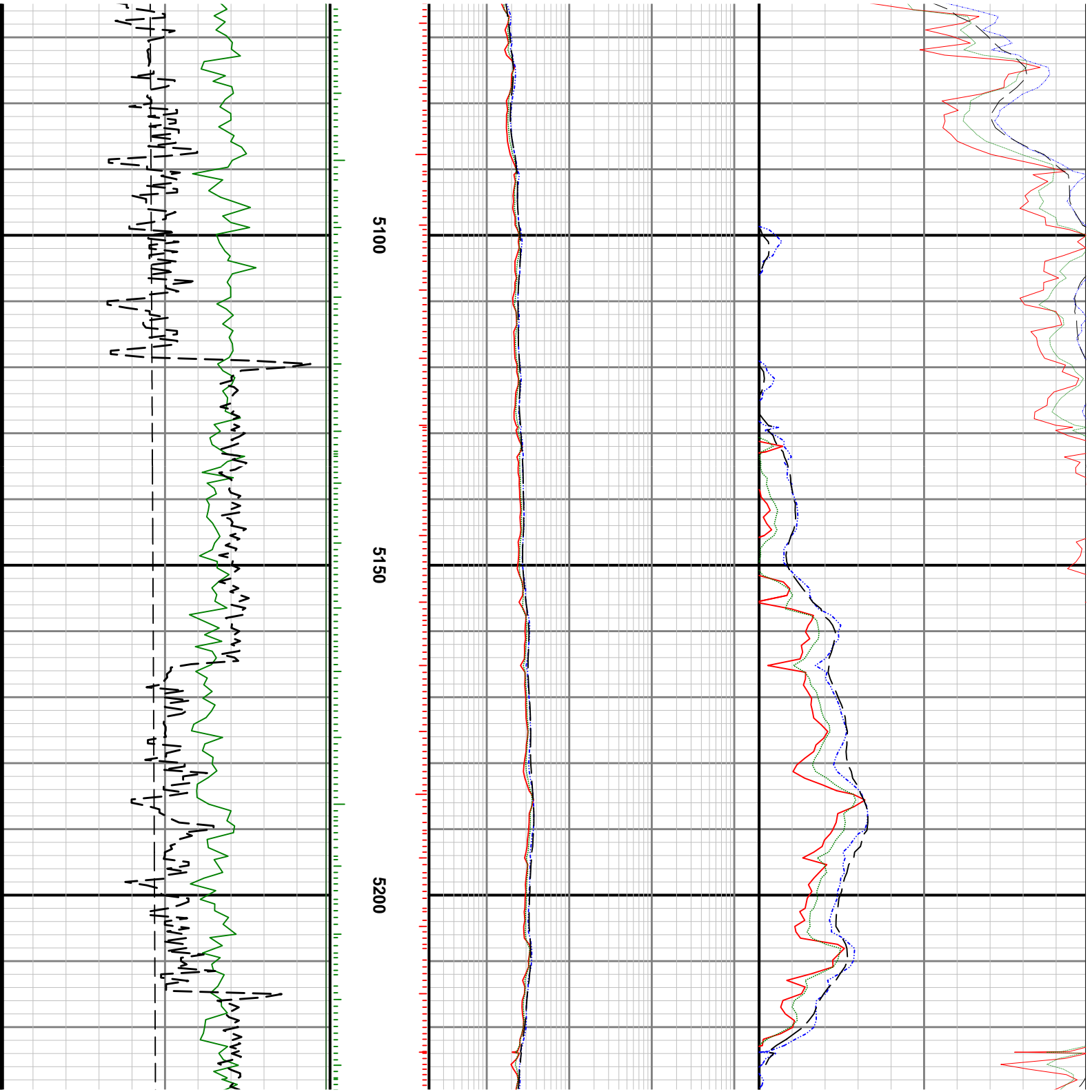


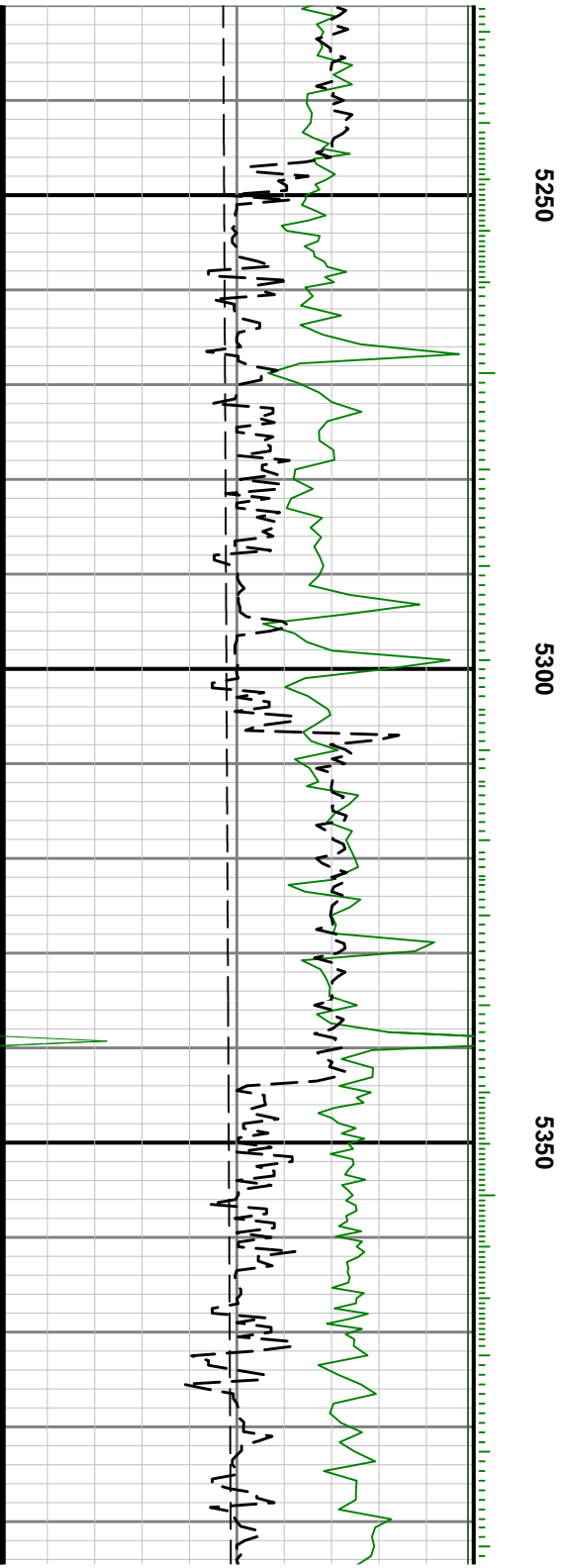
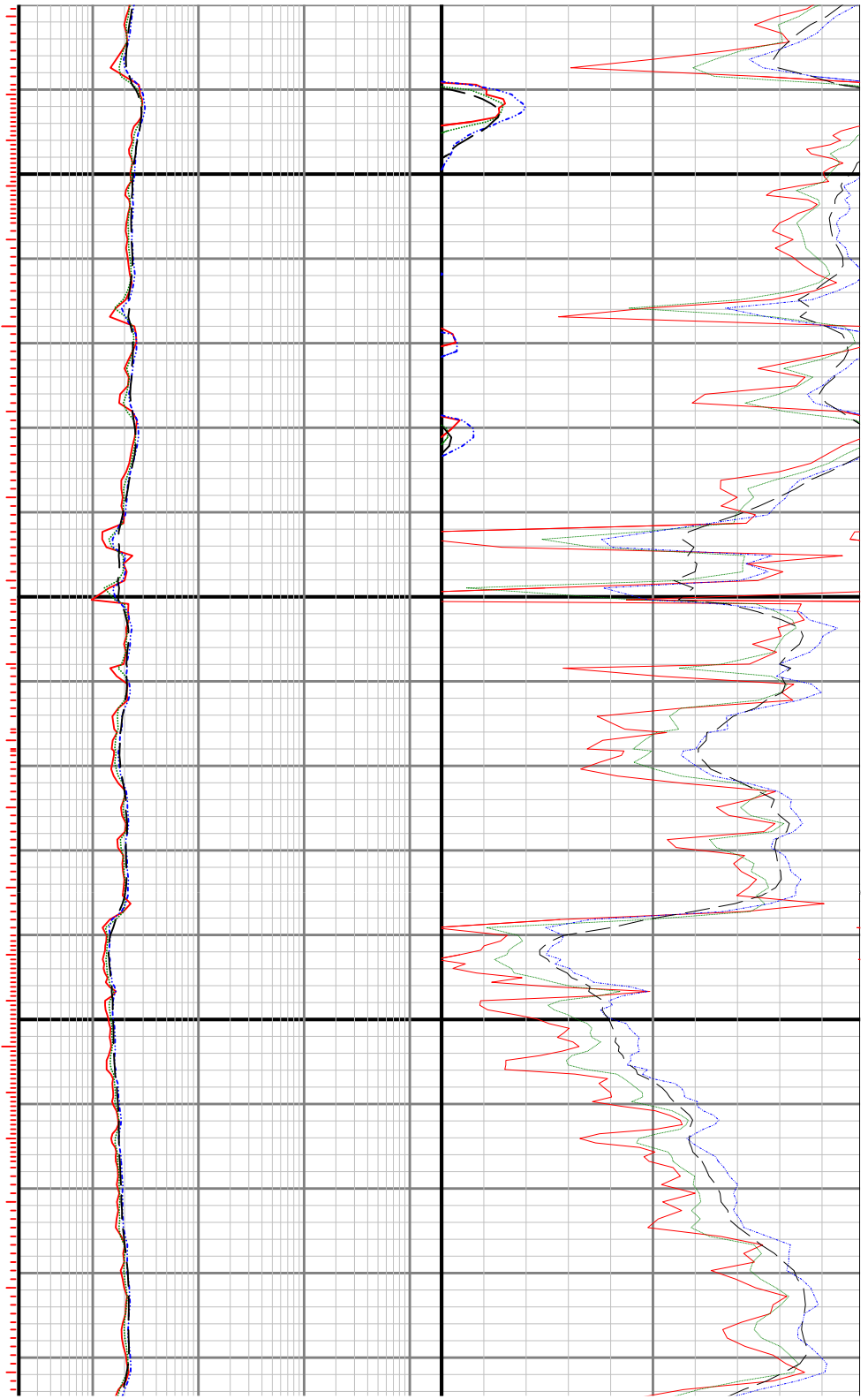


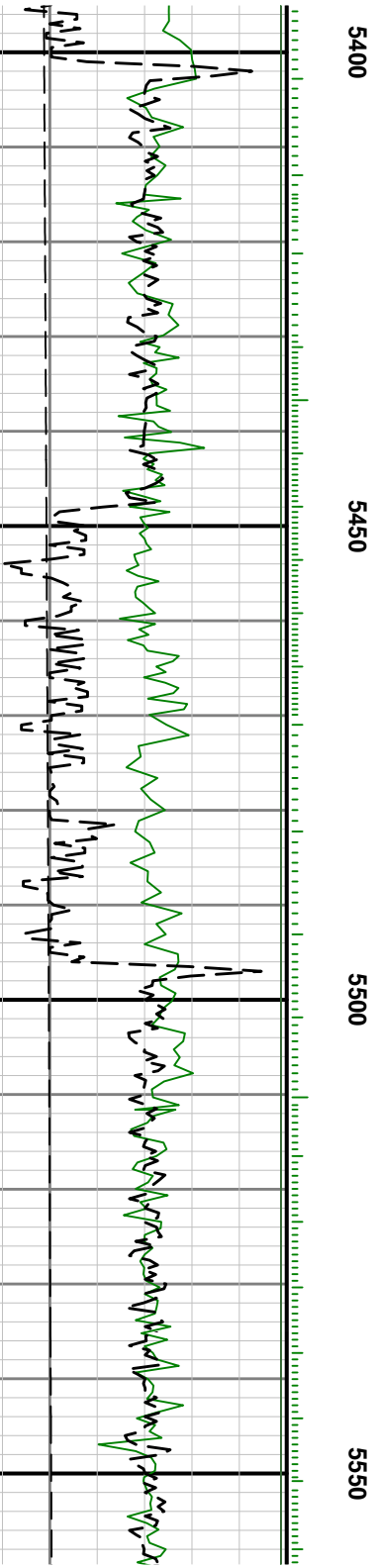
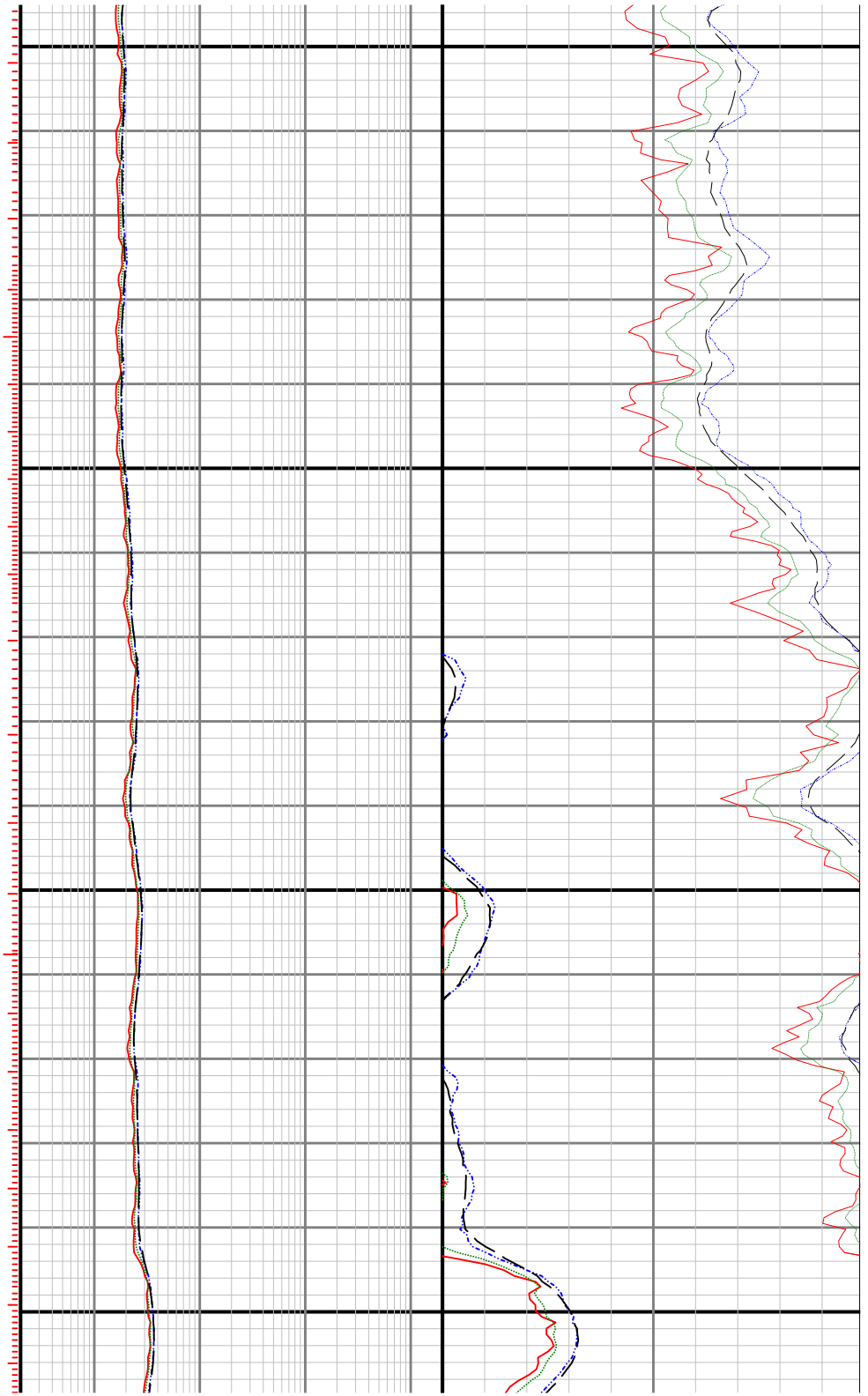


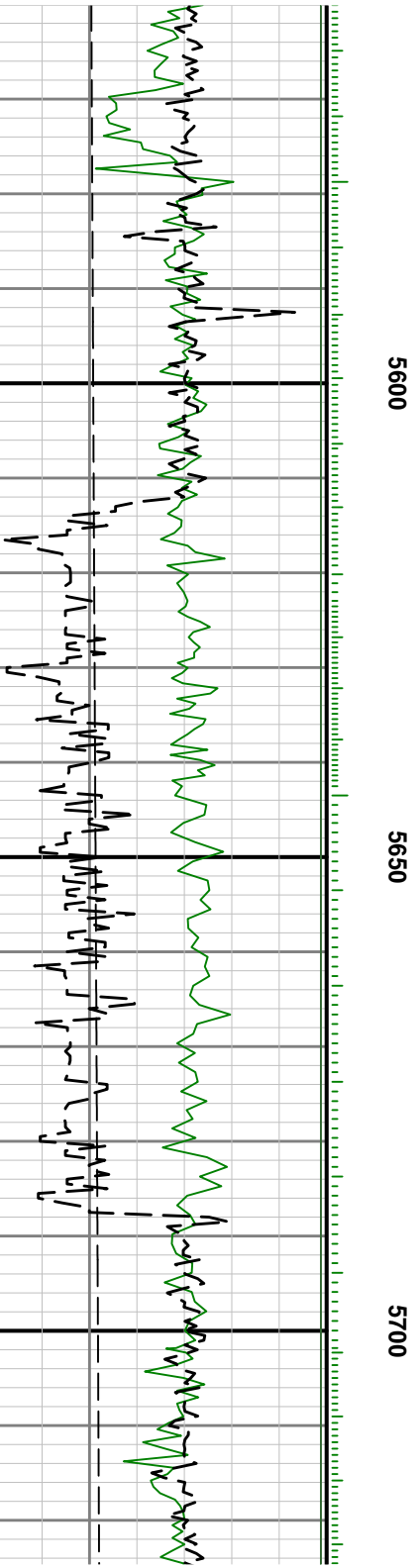
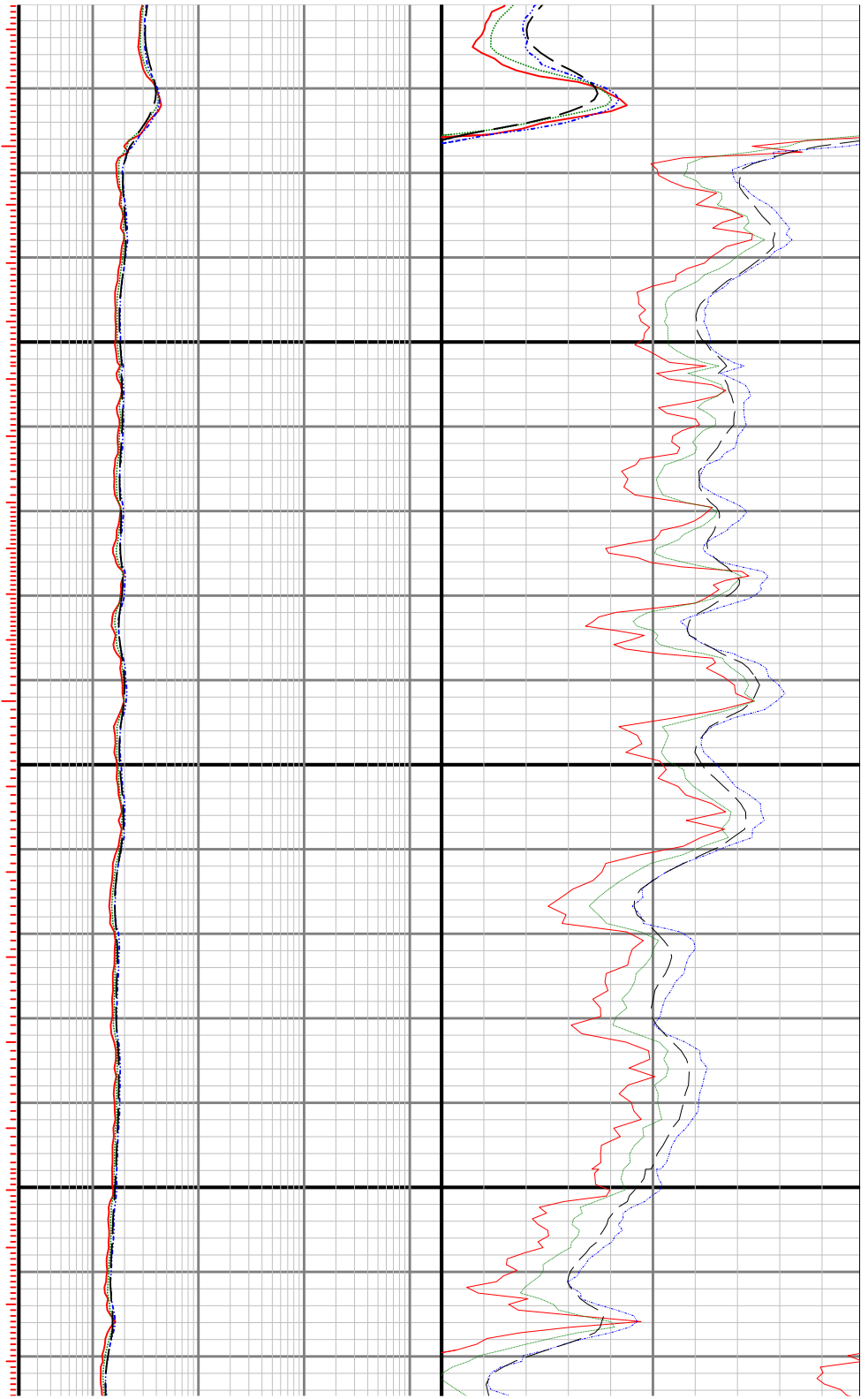


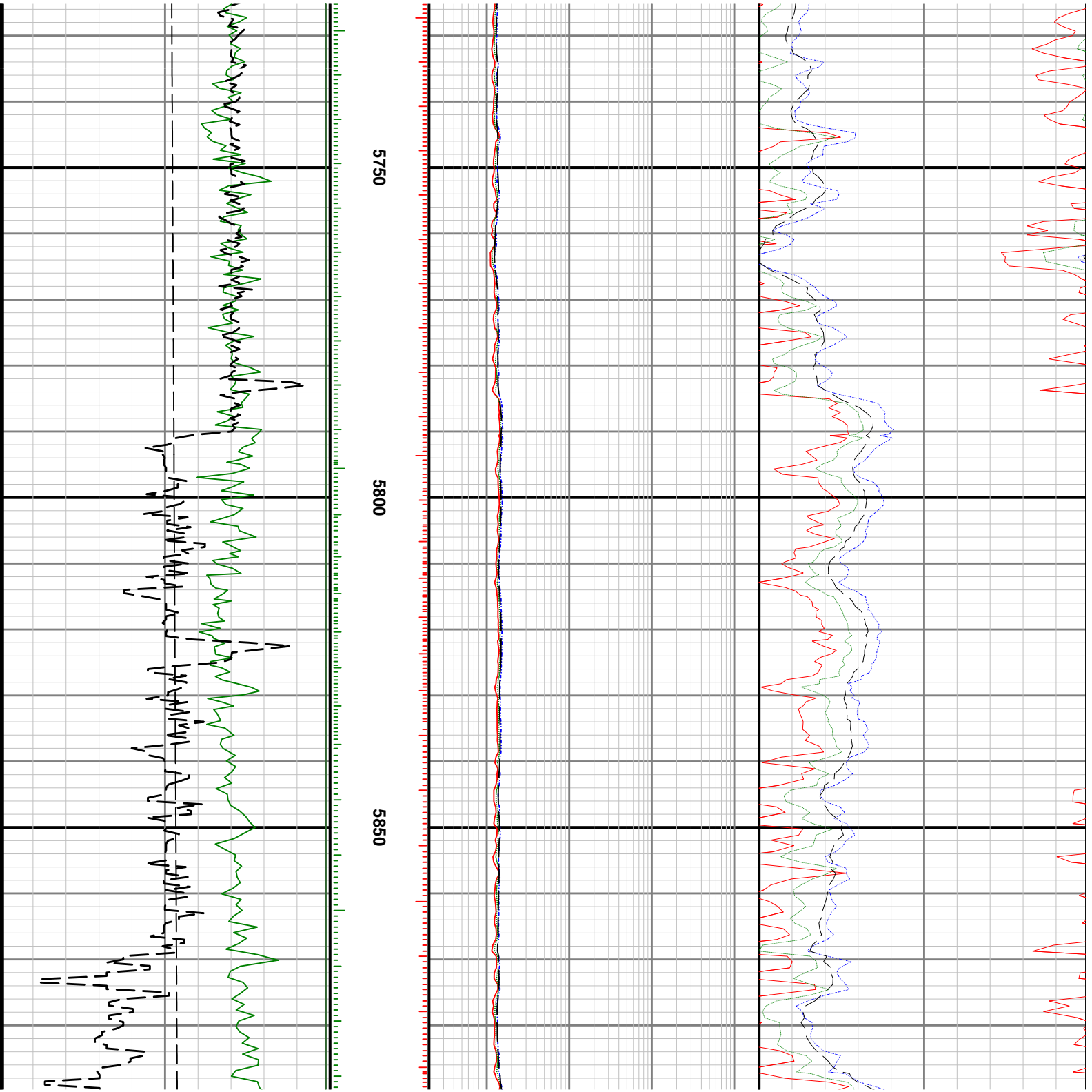


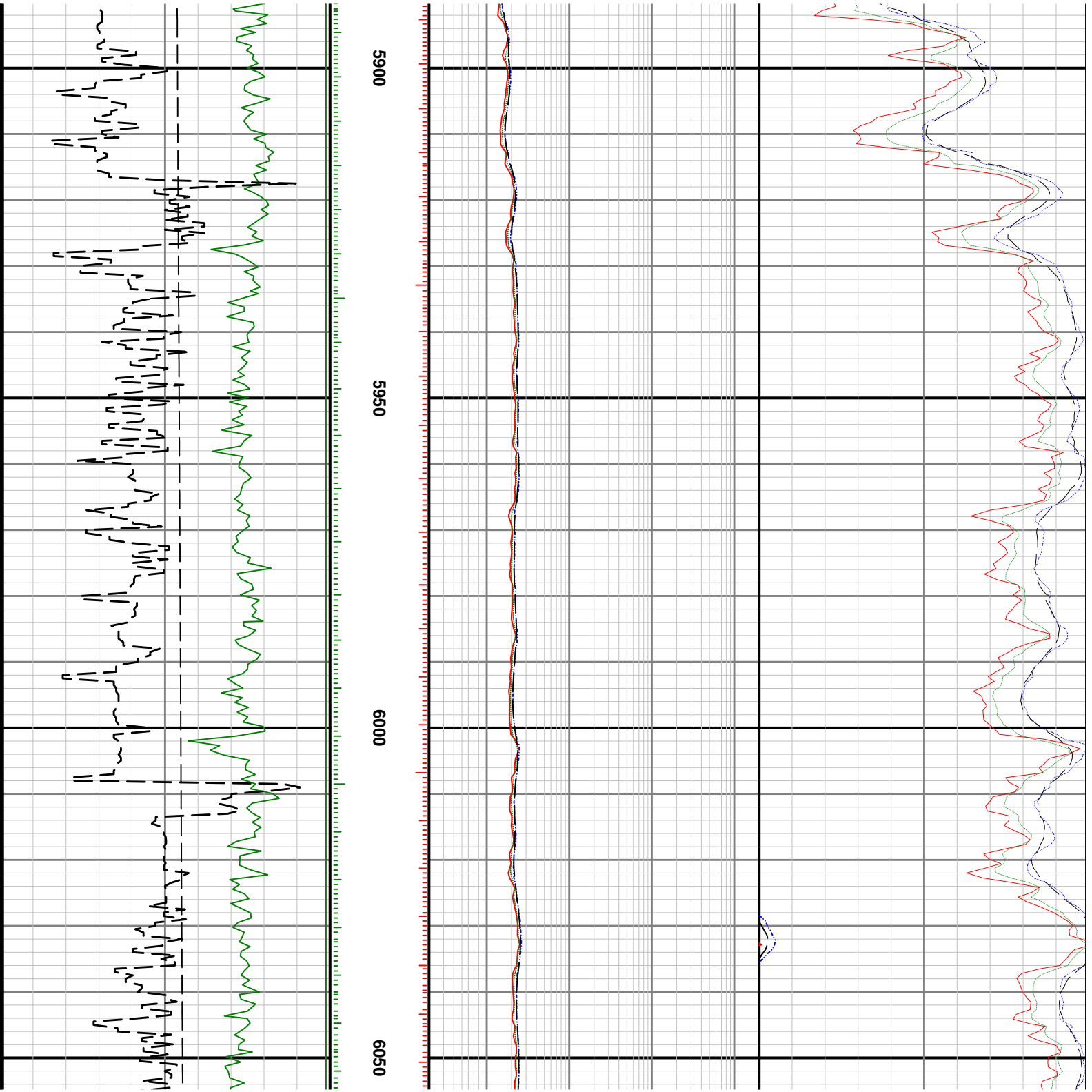


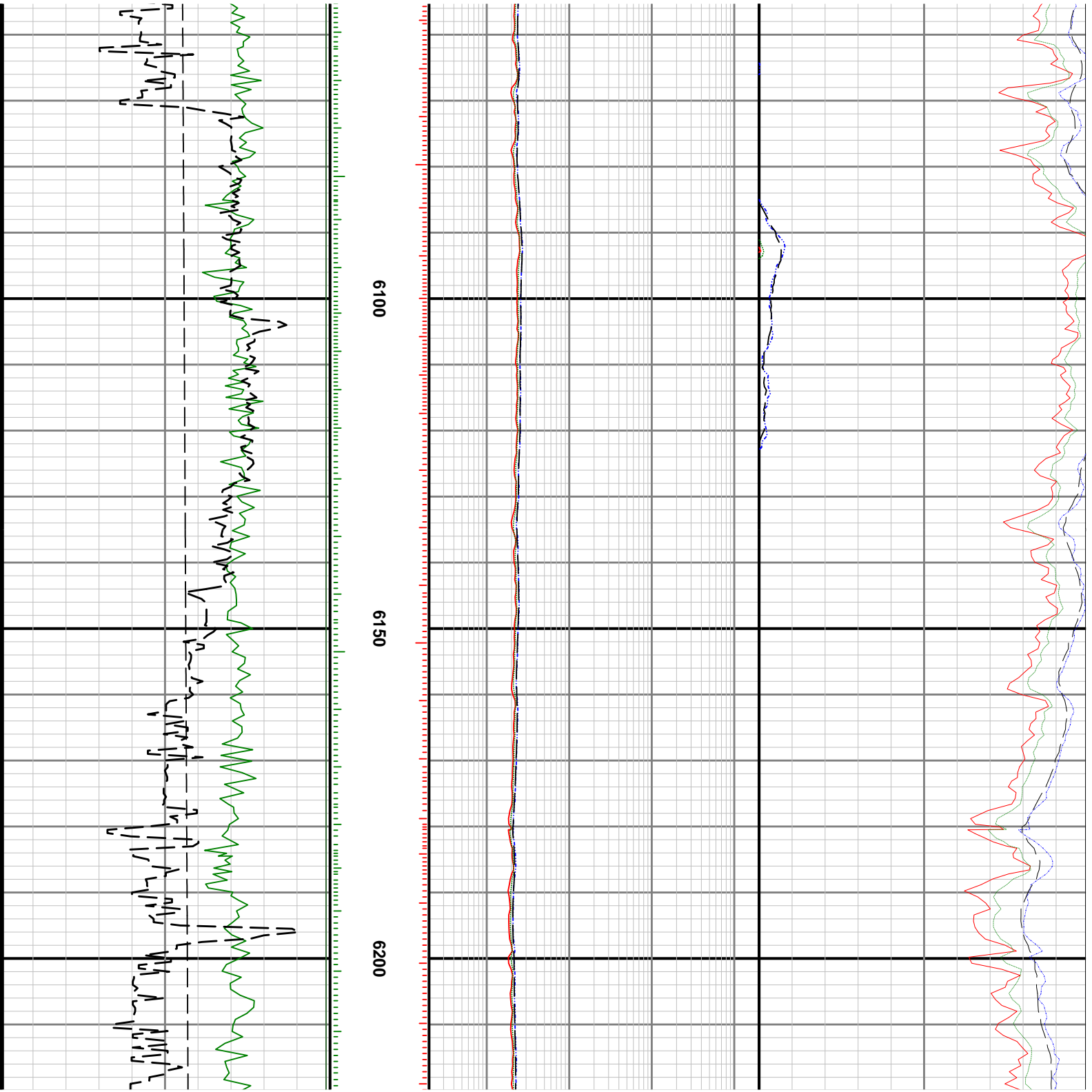


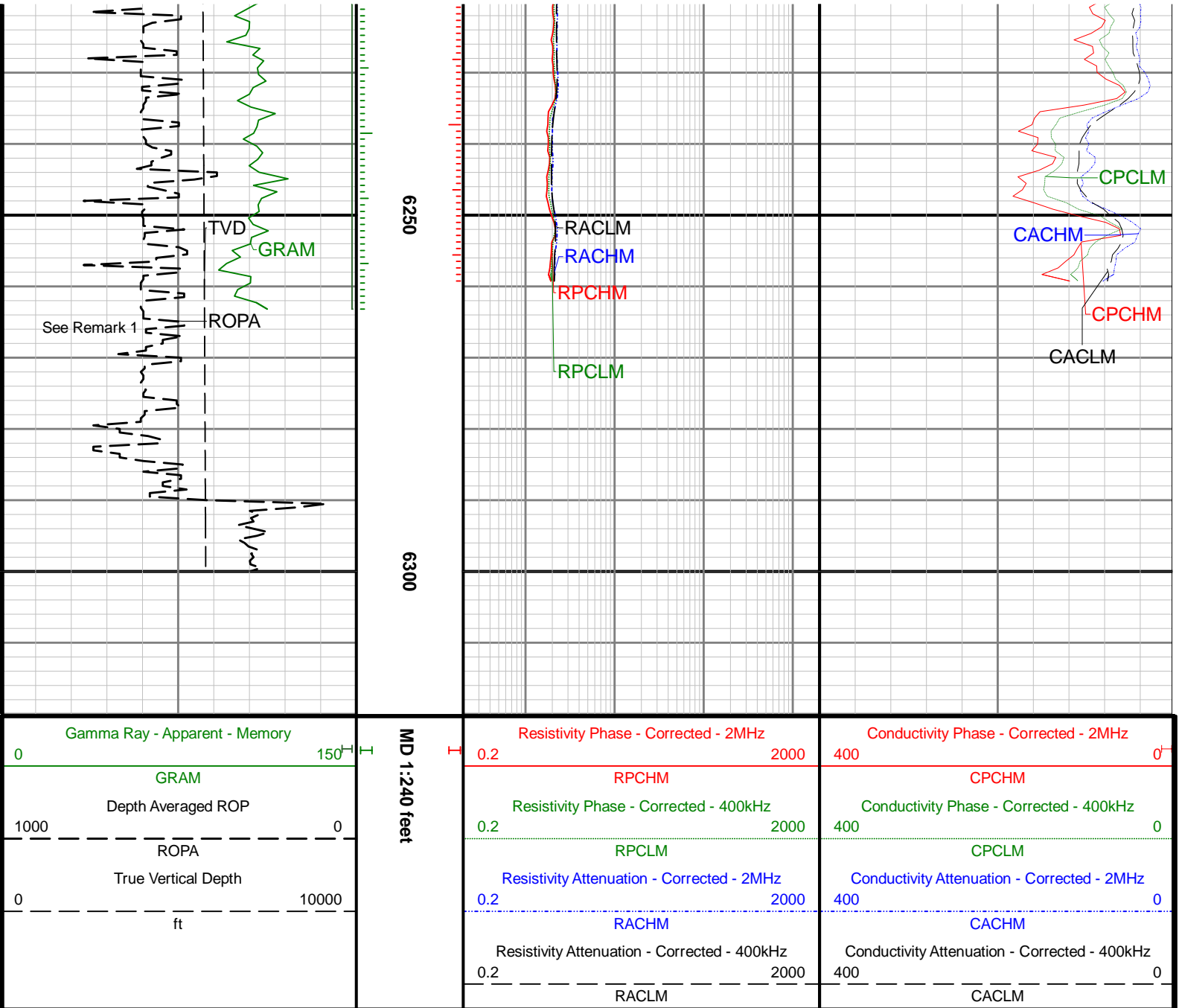












See Remark 1

6250

6300

MD 1:240 feet

RACHM
RPCHM

RPCLM

CACHM
CPCHM
CPCLM

Gamma Ray - Apparent - Memory

GRAM

Depth Averaged ROP

ROPA

True Vertical Depth

ft

Resistivity Phase - Corrected - 2MHz

RPCHM

Resistivity Phase - Corrected - 400kHz

RPCLM

Resistivity Attenuation - Corrected - 2MHz

RACHM

Resistivity Attenuation - Corrected - 400kHz

RACLM

Conductivity Phase - Corrected - 2MHz

CPCHM

Conductivity Phase - Corrected - 400kHz

CPCLM

Conductivity Attenuation - Corrected - 2MHz

CACHM

Conductivity Attenuation - Corrected - 400kHz

CACLM