





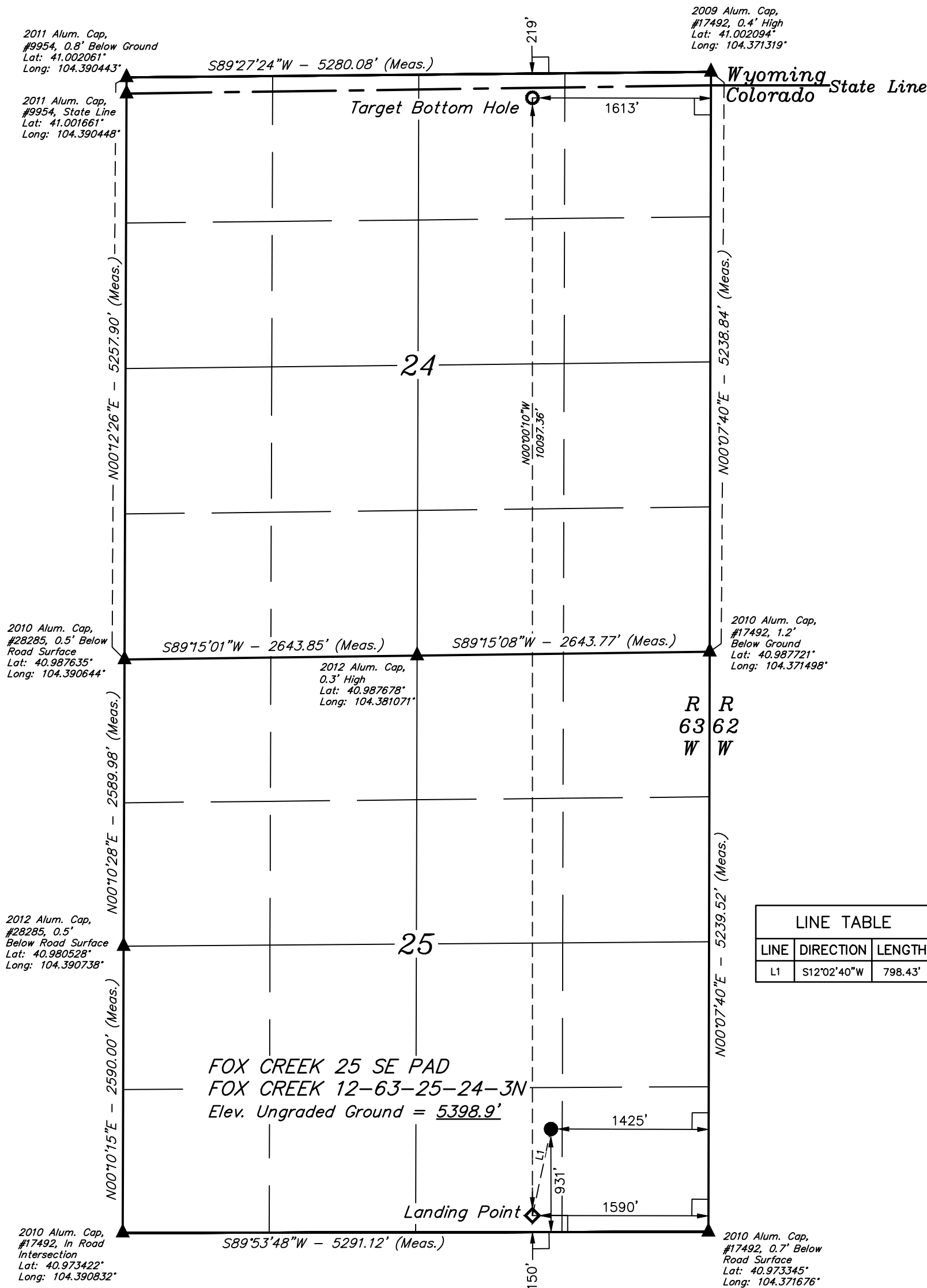


*T12N, R63W, 6th P.M.*

-  = 90° SYMBOL  
 = PROPOSED WELLHEAD.  
 = LANDING POINT.  
 = TARGET BOTTOM HOLE.  
 = SECTION CORNERS  
LOCATED. (NAD 83)  
 = SECTION CORNERS  
RE-ESTABLISHED.  
(Not Set on Ground.)  
(NAD 83)



LINE TABLE		
LINE	DIRECTION	LENGTH
L1	S12°02'40"W	798.43'

FOX CREEK 25 SE PAD  
FOX CREEK 12-63-25-24-3N  
Elev. Ungraded Ground = 5398.9'

**PDOP = 2.1**



<b>NAD 83 (SURFACE LOCATION)</b>	<b>NAD 83 (LANDING POINT)</b>	<b>NAD 83 (TARGET BOTTOM HOLE)</b>
LATITUDE = 40°58'33.31" (40.975919°)	LATITUDE = 40°58'25.61" (40.973780°)	LATITUDE = 41°00'05.35" (41.001486°)
LONGITUDE = 104°22'36.49" (104.376804°)	LONGITUDE = 104°22'38.74" (104.377427°)	LONGITUDE = 104°22'37.81" (104.377169°)
<b>NAD 27 (SURFACE LOCATION)</b>	<b>NAD 27 (LANDING POINT)</b>	<b>NAD 27 (TARGET BOTTOM HOLE)</b>
LATITUDE = 40°58'33.37" (40.975936°)	LATITUDE = 40°58'25.67" (40.973797°)	LATITUDE = 41°00'05.41" (41.001502°)
LONGITUDE = 104°22'34.65" (104.376293°)	LONGITUDE = 104°22'36.90" (104.376916°)	LONGITUDE = 104°22'35.96" (104.376657°)
<b>STATE PLANE NAD 83 (CO. NORTH)</b>	<b>STATE PLANE NAD 83 (CO. NORTH)</b>	<b>STATE PLANE NAD 83 (CO. NORTH)</b>
N: 1600347.12' E: 3310155.68'	N: 1599565.53' E: 3309993.43'	N: 1609660.47' E: 3309937.09'
<b>STATE PLANE NAD 27 (CO. NORTH)</b>	<b>STATE PLANE NAD 27 (CO. NORTH)</b>	<b>STATE PLANE NAD 27 (CO. NORTH)</b>
N: 600344.68' E: 2310305.14'	N: 599563.11' E: 2310142.89'	N: 609657.87' E: 2310086.62'

CERTIFICATE  
THE ABOVE PLAN WAS PREPARED FROM FIELD  
DATA MADE BY ME OR UNDER MY SUPERVISION  
TRUE AND CORRECT TO THE BEST OF MY

REGISTERED LAND SURVEYOR  
REGISTRATION NO. 28285  
STATE OF COLORADO  
10-15-18

REV: 1 10-15-18 S.S. (CORRECT HEADER)

**BASIS OF BEARINGS**  
TRANSVERSE MERCATOR PROJECTION WITH  
A CENTRAL MERIDIAN OF  $W105^{\circ}00'00''$ .

**BASIS OF ELEVATION**  
OPUS SOLUTION GENERATED NAVD 88



**UELS, LLC**  
**Corporate Office \* 85 South 200 East**  
**Vernal, UT 84078 \* (435) 789-1017**



## HIGHPOINT OPERATING CORPORATION

**FOX CREEK 25 SE PAD**  
**FOX CREEK 12-63-25-24-3N**  
**SW 1/4 SE 1/4, SECTION 25, T12N, R63W, 6th P.M.**  
**WELD COUNTY, COLORADO**

<b>SURVEYED BY</b>	GREG WEIMER, D.E.	08-20-18	<b>SCALE</b>
<b>DRAWN BY</b>	J.U.	08-31-18	1" = 1000'

## WELL LOCATION PLAT