

**LEGEND:**

- └─┘ = 90° SYMBOL
- = PROPOSED WELLHEAD.
- ◆ = LANDING POINT.
- = TARGET BOTTOM HOLE.
- ▲ = SECTION CORNERS LOCATED. (NAD 83)
- △ = SECTION CORNERS RE-ESTABLISHED. (Not Set on Ground.) (NAD 83)

**T12N, R63W, 6th P.M.**

2011 Alum. Cap,  
#9954, 0.8' Below Ground  
Lat: 41.002061°  
Long: 104.390443°

2011 Alum. Cap,  
#9954, State Line  
Lat: 41.001661°  
Long: 104.390448°

2009 Alum. Cap,  
#17492, 0.4' High  
Lat: 41.002094°  
Long: 104.371319°

2010 Alum. Cap,  
#28285, 0.5' Below Road Surface  
Lat: 40.987635°  
Long: 104.390644°

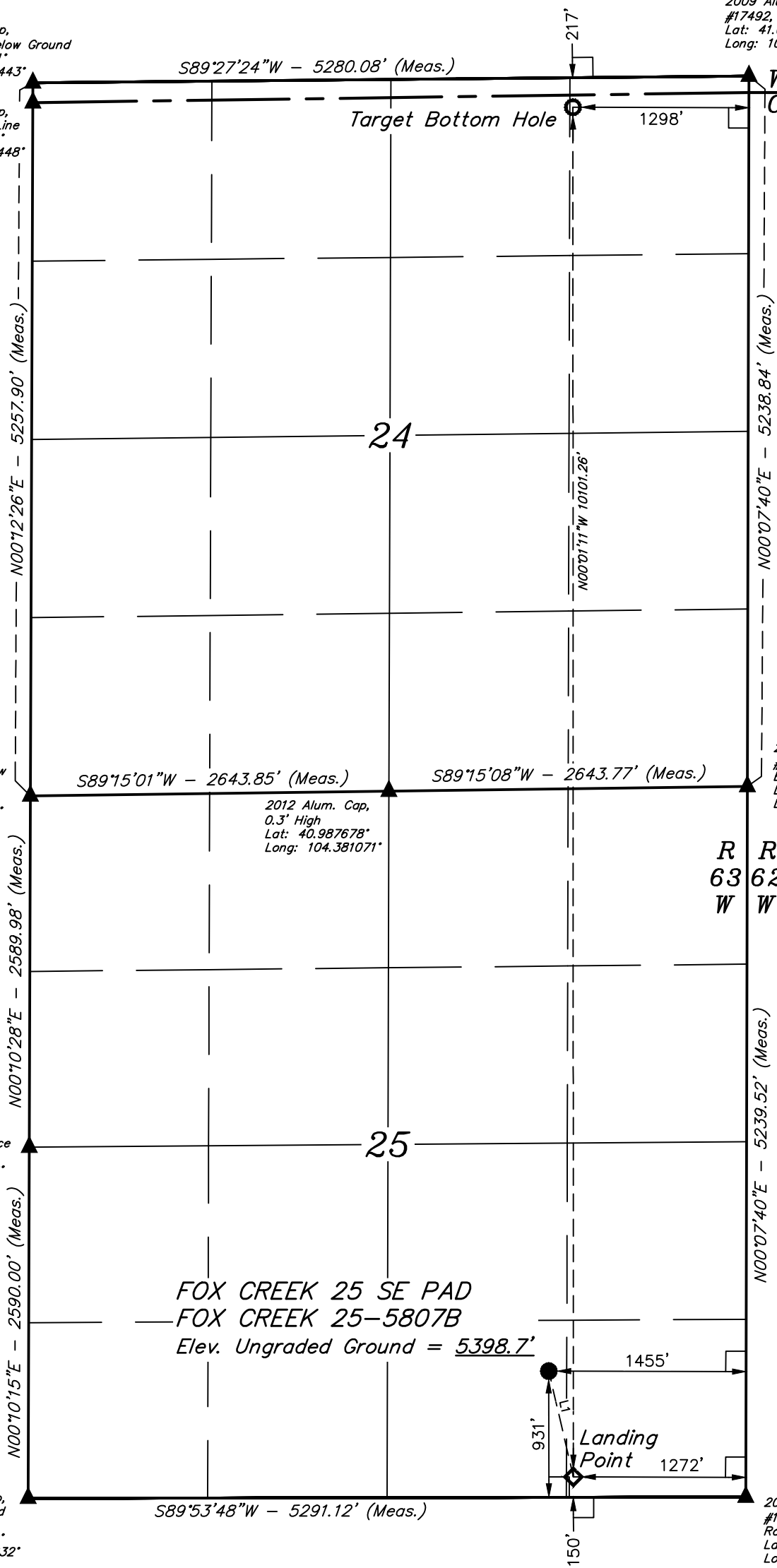
2012 Alum. Cap,  
0.3' High  
Lat: 40.987678°  
Long: 104.381071°

2010 Alum. Cap,  
#17492, 1.2' Below Ground  
Lat: 40.987721°  
Long: 104.371498°

2012 Alum. Cap,  
#28285, 0.5' Below Road Surface  
Lat: 40.980528°  
Long: 104.390738°

2010 Alum. Cap,  
#17492, In Road Intersection  
Lat: 40.973422°  
Long: 104.390832°

2010 Alum. Cap,  
#17492, 0.7' Below Road Surface  
Lat: 40.973345°  
Long: 104.371676°



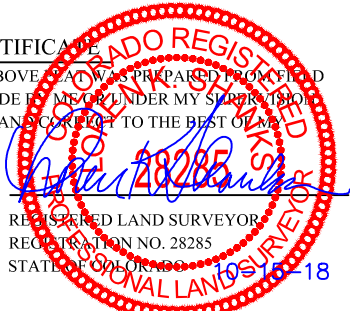
LINE TABLE		
LINE	DIRECTION	LENGTH
L1	S13°04'47"E	801.37'

**FOX CREEK 25 SE PAD**  
**FOX CREEK 25-5807B**  
Elev. Ungraded Ground = 5398.7'



NAD 83 (SURFACE LOCATION)	NAD 83 (LANDING POINT)	NAD 83 (TARGET BOTTOM HOLE)
LATITUDE = 40°58'33.31" (40.975921°)	LATITUDE = 40°58'25.59" (40.973775°)	LATITUDE = 41°00'05.37" (41.001492°)
LONGITUDE = 104°22'36.89" (104.376913°)	LONGITUDE = 104°22'34.59" (104.376276°)	LONGITUDE = 104°22'33.70" (104.376028°)
NAD 27 (SURFACE LOCATION)	NAD 27 (LANDING POINT)	NAD 27 (TARGET BOTTOM HOLE)
LATITUDE = 40°58'33.38" (40.975938°)	LATITUDE = 40°58'25.65" (40.973792°)	LATITUDE = 41°00'05.43" (41.001509°)
LONGITUDE = 104°22'35.04" (104.376401°)	LONGITUDE = 104°22'32.75" (104.375765°)	LONGITUDE = 104°22'31.86" (104.375516°)
STATE PLANE NAD 83 (CO. NORTH)	STATE PLANE NAD 83 (CO. NORTH)	STATE PLANE NAD 83 (CO. NORTH)
N: 1600347.25' E: 3310125.72'	N: 1599567.86' E: 3310311.35'	N: 1609666.69' E: 3310252.00'
STATE PLANE NAD 27 (CO. NORTH)	STATE PLANE NAD 27 (CO. NORTH)	STATE PLANE NAD 27 (CO. NORTH)
N: 600344.81' E: 2310275.19'	N: 599565.44' E: 2310460.81'	N: 609664.08' E: 2310401.53'

CERTIFICATE  
THIS IS TO CERTIFY THAT THE ABOVE WAS PREPARED FROM FIELD NOTES OF ACTUAL SURVEYS MADE BY ME OR UNDER MY SUPERVISION AND THAT THE SAME ARE TRUE AND CORRECT TO THE BEST OF MY KNOWLEDGE AND BELIEF.



REV: 1 10-15-18 S.S. (CORRECT HEADER)

**BASIS OF BEARINGS**  
TRANSVERSE MERCATOR PROJECTION WITH A CENTRAL MERIDIAN OF W105°00'00".

**BASIS OF ELEVATION**  
OPUS SOLUTION GENERATED NAVD 88



**HIGHPOINT OPERATING CORPORATION**  
**FOX CREEK 25 SE PAD**  
**FOX CREEK 25-5807B**  
SW 1/4 SE 1/4, SECTION 25, T12N, R63W, 6th P.M.  
WELD COUNTY, COLORADO

SURVEYED BY	GREG WEIMER, D.E.	08-20-18	SCALE
DRAWN BY	J.U.	08-31-18	1" = 1000'

**WELL LOCATION PLAT**



**UELS, LLC**  
Corporate Office \* 85 South 200 East  
Vernal, UT 84078 \* (435) 789-1017