

Great Western Operating Company, LLC

Location

Colorado

Field

Wattenburg

Installation

Schneider North

Slot 12 - Schneider HD 11-142HC

Well Schneider HD 11-142HC

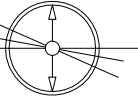
Wellbore Schneider HD 11-142HC (AWB)

East (Feet) ->

Scale 1 cm = 400 ft

E

W



May-14-2018
BMM-2015 [2000.0-2020.0] Dip: 66.77 deg Field: 52301.0 nT
Lat: N40 19.27 8796 Long: W104 49 34.3864 Elev: 4733.80 ft
Magnetic North is 8.35 deg East of TRUE North
To correct azimuth from Magnetic to TRUE add 8.35 deg

Created by admin

Date plotted 17-Jul-2018

Plot reference is Schneider HD 11-142HC (AWB).

Ref wellpath is Schneider HD 11-142HC (AWP#1).

Coordinates are in Feet reference Slot 12 - Schneider HD 11-142HC.

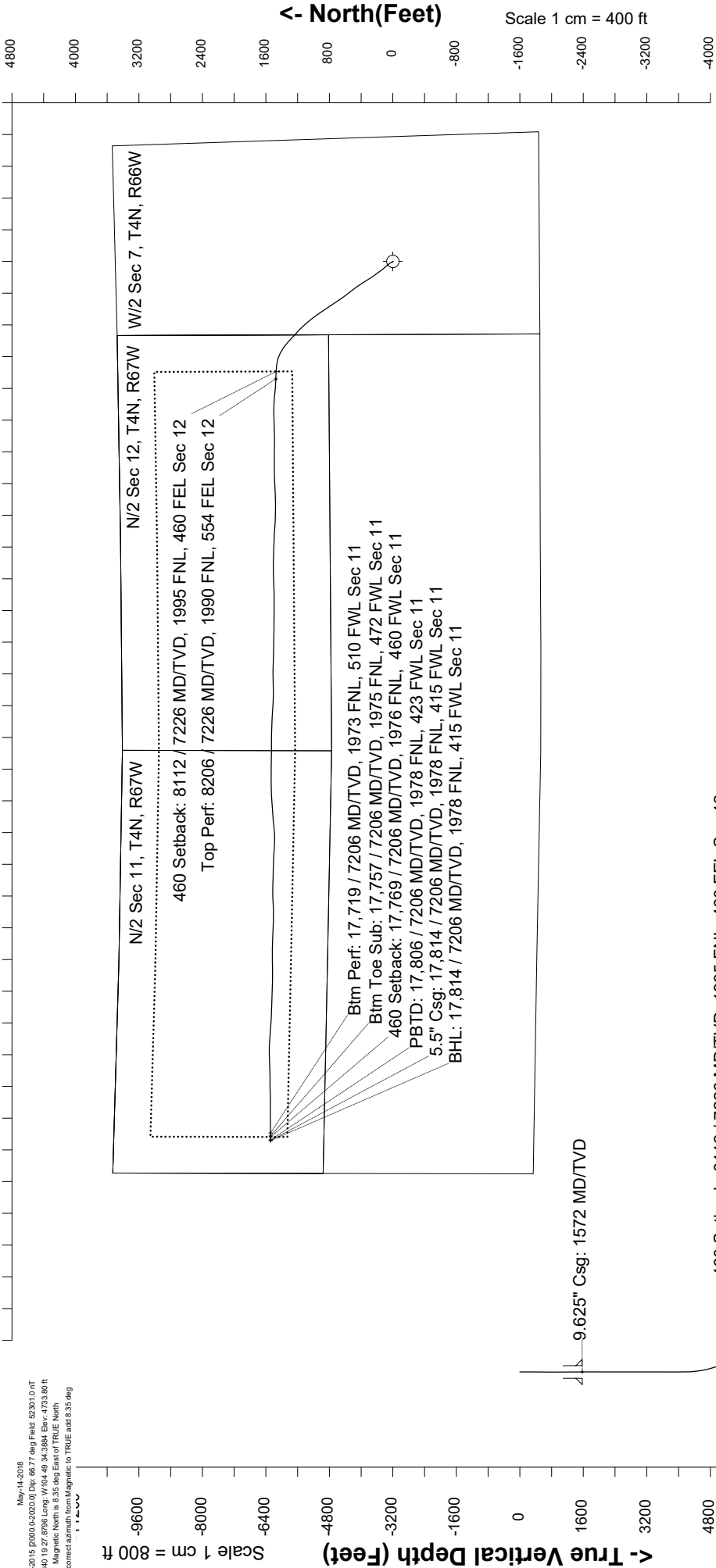
True Vertical Depths are reference Rig Datum.

Measured Depths are reference Rig Datum.

Rig Datum: Actual Datum #1

Rig Datum to Mean Sea Level: 4753.80 ft.

Plot North is aligned to TRUE North.



460 Setback: 8112 / 7226 MD/TV, 1995 FNL, 460 FEL Sec 12
Top Perf: 8206 / 7226 MD/TV, 1990 FNL, 554 FEL Sec 12

Btm Perf: 17,719 / 7206 MD/TV, 1973 FNL, 510 FWL Sec 11
Btm Toe Sub: 17,757 / 7206 MD/TV, 1975 FNL, 472 FWL Sec 11
460 Setback: 17,769 / 7206 MD/TV, 1976 FNL, 460 FWL Sec 11
BHL: 17,814 / 7206 MD/TV, 1978 FNL, 415 FWL Sec 11
5.5" Csg: 17,814 / 7206 MD/TV, 1978 FNL, 415 FWL Sec 11
PBTD: 17,806 / 7206 MD/TV, 1978 FNL, 423 FWL Sec 11

-1600 0 1600 3200 4800 6400 8000 9600

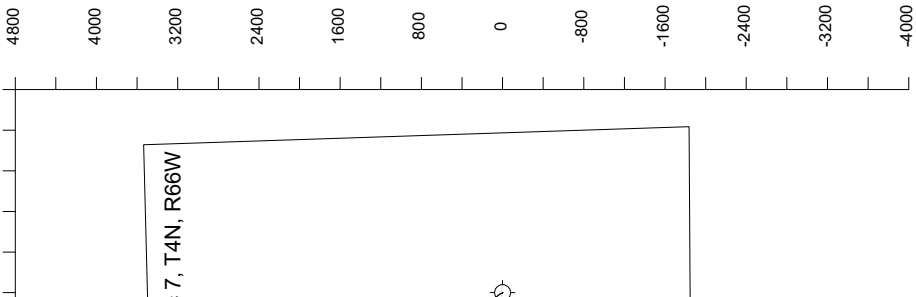
Scale 1 cm = 800 ft

Vertical Section (Feet) ->

Azimuth 277.90 with reference 0.00 N, 0.00 E from Slot 12 - Schneider HD 11-142HC

<- North(Feet)

Scale 1 cm = 400 ft



Great Western Operating Co, LLC Wellbore Survey Report Wellpath: Schneider HD 11-142HC (AWP#1) MDs and TVDs are from Rig (Actual Datum #1 4753.8ft above Mean Sea Level)

Wellbore Information

Date Created	Date Revised	API #	Name	
May-29-2018	Jul-17-2018	05-123-46409	Schneider HD 11-142HC (AWB)	

Slot Coordinates

Latitude	Longitude	
40.32428300	-104.82643100	

Pad Information

Name	Ground Elev	
Schneider North	4733.80	

Field

Name	
Wattenburg	

Wellpath Report

MD[ft]	Inc[deg]	Azi[deg]	TVD[ft]	North[ft]	East[ft]	Dogleg [deg/100ft]	Vertical Section[ft]	
0.00	0.00	0.000	0.00	0.00	0.00		0.00	
20.00	0.00	184.530	20.00	0.00	0.00	==>	0.00	
151.00	0.31	184.530	151.00	-0.35	-0.03	0.24	-0.02	
241.00	0.04	43.900	241.00	-0.57	-0.03	0.38	-0.05	
327.00	0.04	24.040	327.00	-0.52	0.01	==>	-0.08	
423.00	0.13	142.250	423.00	-0.58	0.09	0.16	-0.17	
513.00	0.26	98.220	513.00	-0.69	0.35	0.21	-0.44	
603.00	0.31	48.390	603.00	-0.56	0.74	0.27	-0.81	
693.00	0.22	22.630	693.00	-0.24	0.99	0.16	-1.01	
783.00	0.18	8.400	783.00	0.06	1.07	0.07	-1.05	
873.00	0.22	178.820	873.00	0.03	1.10	0.44	-1.08	
963.00	0.26	153.940	962.99	-0.33	1.19	0.12	-1.22	
1053.00	0.53	249.390	1052.99	-0.66	0.89	0.68	-0.97	
1143.00	0.22	147.440	1142.99	-0.95	0.59	0.68	-0.72	
1233.00	0.40	290.260	1232.99	-0.98	0.39	0.66	-0.52	
1323.00	0.09	227.420	1322.99	-0.92	0.04	0.41	-0.17	
1413.00	0.31	278.220	1412.99	-0.94	-0.25	0.29	0.12	
1523.00	0.26	204.660	1522.99	-1.12	-0.65	0.31	0.49	
1572.00	0.13	239.200	1571.99	-1.25	-0.74	0.34	0.56	
1618.00	0.15	306.490	1617.99	-1.24	-0.84	0.34	0.66	
1707.00	0.07	158.600	1706.99	-1.22	-0.91	0.24	0.73	
1797.00	0.09	131.490	1796.99	-1.32	-0.84	0.05	0.65	
1887.00	0.04	303.310	1886.99	-1.35	-0.81	0.14	0.62	
1976.00	0.04	111.040	1975.99	-1.35	-0.81	0.09	0.62	
2066.00	0.00	98.330	2065.99	-1.36	-0.78	0.04	0.58	
2155.00	0.03	177.720	2154.99	-1.38	-0.78	0.03	0.58	
2245.00	0.09	21.270	2244.99	-1.34	-0.75	0.13	0.56	
2334.00	0.11	339.720	2333.99	-1.19	-0.76	0.08	0.58	
2423.00	0.04	18.580	2422.99	-1.08	-0.78	0.09	0.62	
2513.00	0.07	53.270	2512.99	-1.02	-0.72	0.05	0.57	
2602.00	0.03	289.530	2601.99	-0.98	-0.70	0.10	0.56	
2692.00	0.22	317.070	2691.99	-0.85	-0.84	0.22	0.71	
2781.00	0.07	228.730	2780.99	-0.76	-1.00	0.26	0.88	
2870.00	0.12	325.890	2869.99	-0.72	-1.09	0.16	0.98	
2960.00	0.07	181.450	2959.99	-0.69	-1.14	0.20	1.04	
3049.00	0.07	271.920	3048.99	-0.75	-1.20	0.11	1.09	
3138.00	0.06	299.410	3137.99	-0.72	-1.29	0.04	1.18	
3228.00	0.06	193.280	3227.99	-0.74	-1.35	0.11	1.23	
3317.00	0.06	21.520	3316.99	-0.75	-1.34	0.13	1.22	
3407.00	0.04	167.690	3406.99	-0.73	-1.32	0.11	1.20	
3496.00	0.03	296.360	3495.99	-0.75	-1.33	0.07	1.21	
3585.00	0.07	353.750	3584.99	-0.69	-1.36	0.07	1.25	
3675.00	0.07	144.710	3674.99	-0.68	-1.33	0.15	1.23	
3764.00	0.03	91.060	3763.99	-0.72	-1.28	0.06	1.17	
3853.00	0.10	168.870	3852.99	-0.80	-1.24	0.11	1.12	
3942.00	0.10	12.370	3941.99	-0.80	-1.21	0.22	1.09	
4032.00	0.14	185.980	4031.99	-0.83	-1.20	0.27	1.08	
4121.00	0.04	193.280	4120.99	-0.97	-1.22	0.11	1.07	
4210.00	2.75	331.340	4209.95	0.87	-2.25	3.12	2.35	
4300.00	5.88	339.190	4299.69	7.08	-4.93	3.53	5.85	
4389.00	9.40	332.450	4387.89	17.79	-9.91	4.07	12.26	
4479.00	11.86	329.150	4476.33	32.25	-18.05	2.81	22.31	
4568.00	12.67	320.940	4563.31	47.68	-28.89	2.16	35.17	
4657.00	14.73	316.420	4649.78	63.46	-42.84	2.61	51.16	
4746.00	17.05	317.620	4735.37	81.29	-59.44	2.63	70.06	
4836.00	19.60	321.220	4820.80	102.81	-77.79	3.10	91.19	
4925.00	22.51	322.480	4903.85	127.97	-97.52	3.31	114.19	
5014.00	24.69	323.010	4985.40	156.33	-119.09	2.46	139.45	
5104.00	27.58	323.700	5066.19	188.14	-142.73	3.23	167.25	
5193.00	29.92	324.740	5144.21	222.87	-167.75	2.69	196.80	
5283.00	29.82	325.630	5222.26	259.67	-193.34	0.50	227.21	
5372.00	29.77	327.730	5299.50	296.62	-217.63	1.17	256.35	
5462.00	29.95	328.040	5377.55	334.57	-241.45	0.26	285.16	
5551.00	30.08	327.810	5454.61	372.30	-265.09	0.20	313.77	
5640.00	30.07	325.990	5531.63	409.66	-289.45	1.02	343.03	
5730.00	30.10	324.620	5609.51	446.75	-315.13	0.76	373.56	
5819.00	29.90	322.890	5686.59	482.64	-341.43	1.00	404.55	
5908.00	30.14	322.180	5763.65	517.98	-368.52	0.48	436.24	

MD[ft]	Inc[deg]	Azi[deg]	TVD[ft]	North[ft]	East[ft]	Dogleg [deg/100ft]	Vertical Section[ft]
5998.00	29.99	323.850	5841.54	553.99	-395.64	0.94	468.06
6087.00	30.20	324.730	5918.54	590.23	-421.69	0.55	498.84
6177.00	30.12	325.100	5996.36	627.23	-447.68	0.22	529.67
6266.00	30.07	324.420	6073.36	663.68	-473.43	0.39	560.19
6356.00	30.14	323.580	6151.22	700.20	-499.96	0.47	591.49
6445.00	30.16	324.130	6228.18	736.29	-526.33	0.31	622.57
6534.00	30.20	325.530	6305.12	772.87	-552.10	0.79	653.13
6624.00	30.20	325.990	6382.90	810.29	-577.57	0.26	683.50
6713.00	29.81	326.880	6459.98	847.37	-602.18	0.66	712.98
6803.00	30.13	326.820	6537.94	885.02	-626.76	0.36	742.50
6892.00	29.94	326.120	6614.99	922.15	-651.37	0.45	771.98
6981.00	30.09	325.100	6692.06	958.89	-676.51	0.60	801.94
7071.00	30.34	324.350	6769.83	995.86	-702.67	0.50	832.93
7160.00	30.31	323.130	6846.65	1032.09	-729.25	0.69	864.24
7250.00	34.36	319.940	6922.69	1069.72	-759.23	4.88	899.11
7339.00	41.92	317.030	6992.64	1110.76	-795.72	8.73	940.90
7429.00	50.91	314.150	7054.63	1157.19	-841.37	10.25	992.50
7518.00	60.33	313.190	7104.83	1207.82	-894.46	10.62	1052.05
7608.00	69.37	312.720	7143.04	1263.27	-954.04	10.06	1118.68
7697.00	75.30	312.650	7170.04	1320.74	-1016.35	6.66	1188.30
7786.00	78.03	305.180	7190.59	1375.06	-1083.69	8.72	1262.47
7876.00	80.78	296.200	7207.17	1420.14	-1159.69	10.27	1343.95
7965.00	84.67	285.000	7218.47	1451.10	-1242.19	13.22	1429.93
8055.00	87.90	275.870	7224.32	1467.34	-1330.41	10.74	1519.54
8111.69	89.18	272.970	7225.76	1471.71	-1386.91	5.59	1576.10
8144.00	89.91	271.320	7226.02	1472.92	-1419.19	5.59	1608.25
8206.00	89.95	271.780	7226.09	1474.59	-1481.17	0.75	1669.87
8234.00	89.97	271.990	7226.11	1475.52	-1509.16	0.75	1697.71
8323.00	90.28	274.930	7225.92	1480.89	-1597.98	3.32	1786.43
8412.00	89.88	276.630	7225.79	1489.85	-1686.53	1.96	1875.37
8502.00	89.85	272.650	7226.01	1497.13	-1776.21	4.42	1965.20
8591.00	89.91	271.190	7226.19	1500.11	-1865.16	1.64	2053.72
8681.00	89.88	268.710	7226.36	1500.03	-1955.15	2.76	2142.84
8770.00	90.46	267.450	7226.09	1497.05	-2044.10	1.56	2230.54
8860.00	90.43	268.360	7225.39	1493.76	-2134.04	1.01	2319.17
8949.00	90.52	268.950	7224.66	1491.67	-2223.01	0.67	2407.01
9038.00	90.31	270.470	7224.01	1491.22	-2312.00	1.72	2495.09
9127.00	90.52	271.210	7223.37	1492.52	-2400.99	0.86	2583.41
9217.00	90.03	270.230	7222.93	1493.66	-2490.98	1.22	2672.71
9306.00	89.88	269.700	7223.00	1493.60	-2579.98	0.62	2760.85
9395.00	90.18	268.830	7222.96	1492.46	-2668.97	1.03	2848.84
9485.00	89.51	267.690	7223.20	1489.73	-2758.93	1.47	2937.57
9574.00	89.60	267.190	7223.89	1485.75	-2847.84	0.57	3025.08
9664.00	89.66	267.770	7224.47	1481.79	-2937.75	0.65	3113.60
9753.00	89.69	269.200	7224.98	1479.44	-3026.71	1.61	3201.39
9842.00	89.75	270.320	7225.41	1479.07	-3115.71	1.26	3289.49
9932.00	89.60	271.610	7225.92	1480.58	-3205.69	1.44	3378.83
10021.00	89.82	273.150	7226.37	1484.28	-3294.61	1.75	3467.41
10111.00	89.85	273.860	7226.63	1489.78	-3384.44	0.79	3557.15
10200.00	89.91	273.360	7226.82	1495.39	-3473.27	0.57	3645.90
10289.00	89.85	271.830	7227.01	1499.42	-3562.17	1.72	3734.51
10379.00	89.78	271.620	7227.30	1502.12	-3652.13	0.25	3823.99
10468.00	90.12	271.410	7227.38	1504.48	-3741.10	0.45	3912.44
10557.00	89.41	270.070	7227.74	1505.63	-3830.09	1.70	4000.74
10646.00	89.38	269.210	7228.68	1505.07	-3919.08	0.97	4088.81
10736.00	89.41	268.380	7229.63	1503.18	-4009.06	0.92	4177.67
10826.00	89.26	267.260	7230.67	1499.75	-4098.98	1.26	4266.27
10915.00	89.94	269.060	7231.30	1496.89	-4187.93	2.16	4353.98
11004.00	89.82	270.270	7231.48	1496.37	-4276.93	1.37	4442.06
11094.00	89.94	270.010	7231.67	1496.59	-4366.93	0.32	4531.24
11183.00	89.97	270.170	7231.74	1496.73	-4455.93	0.18	4619.41
11272.00	90.00	270.530	7231.76	1497.28	-4544.93	0.41	4707.64
11362.00	89.94	270.310	7231.81	1497.94	-4634.92	0.25	4796.87
11451.00	90.58	270.940	7231.41	1498.91	-4723.92	1.01	4885.15
11541.00	90.49	270.800	7230.57	1500.27	-4813.90	0.18	4974.47
11630.00	90.49	271.590	7229.81	1502.13	-4902.88	0.89	5062.86
11720.00	90.46	272.000	7229.06	1504.95	-4992.83	0.46	5152.34
11809.00	90.65	271.720	7228.20	1507.84	-5081.78	0.38	5240.84
11898.00	90.49	270.950	7227.31	1509.91	-5170.75	0.88	5329.25
11988.00	90.00	268.280	7226.93	1509.31	-5260.74	3.02	5418.30
12077.00	90.12	268.160	7226.83	1506.54	-5349.70	0.19	5506.04
12167.00	90.12	270.670	7226.65	1505.62	-5439.68	2.79	5595.04
12256.00	89.97	272.150	7226.58	1507.81	-5528.65	1.67	5683.47
12346.00	90.12	273.300	7226.51	1512.09	-5618.55	1.29	5773.10
12435.00	90.40	273.870	7226.10	1517.66	-5707.38	0.71	5861.85
12524.00	90.28	272.930	7225.57	1522.94	-5796.22	1.06	5950.57
12614.00	90.25	272.070	7225.16	1526.86	-5886.13	0.96	6040.17
12703.00	90.25	270.390	7224.77	1528.77	-5975.10	1.89	6128.56
12793.00	90.77	270.030	7223.97	1529.10	-6065.10	0.70	6217.75
12882.00	90.80	270.680	7222.75	1529.65	-6154.09	0.73	6305.97
12972.00	90.77	270.340	7221.52	1530.45	-6244.08	0.38	6395.21
13061.00	90.71	270.910	7220.37	1531.42	-6333.06	0.64	6483.49
13150.00	90.74	271.490	7219.24	1533.29	-6422.04	0.65	6571.87
13240.00	90.58	269.530	7218.20	1534.09	-6512.02	2.18	6661.11
13329.00	90.71	268.770	7217.20	1532.77	-6601.01	0.87	6749.07
13419.00	90.37	268.140	7216.35	1530.34	-6690.97	0.80	6837.84
13508.00	90.43	266.320	7215.73	1526.04	-6779.86	2.05	6925.30
13597.00	90.18	265.230	7215.26	1519.49	-6868.61	1.26	7012.31
13687.00	90.18	266.600	7214.97	1513.07	-6958.38	1.52	7100.34
13777.00	90.28	265.170	7214.61	1506.62	-7048.15	1.59	7188.37
13866.00	90.31	263.630	7214.16	1497.93	-7136.72	1.73	7274.90

MD[ft]	Inc[deg]	Azi[deg]	TVD[ft]	North[ft]	East[ft]	Dogleg [deg/100ft]	Vertical Section[ft]
13956.00	90.37	267.020	7213.62	1490.60	-7226.41	3.77	7362.73
14045.00	90.22	272.500	7213.16	1490.22	-7315.37	6.16	7450.80
14134.00	90.28	273.680	7212.77	1495.02	-7404.24	1.33	7539.48
14224.00	90.15	273.070	7212.44	1500.32	-7494.08	0.69	7629.20
14313.00	90.65	272.100	7211.82	1504.33	-7582.99	1.23	7717.81
14402.00	90.65	271.200	7210.81	1506.90	-7671.94	1.01	7806.27
14492.00	90.68	271.600	7209.76	1509.10	-7761.91	0.45	7895.69
14581.00	90.49	271.730	7208.85	1511.68	-7850.87	0.26	7984.16
14670.00	90.40	270.150	7208.16	1513.14	-7939.85	1.78	8072.50
14760.00	90.31	267.720	7207.60	1511.47	-8029.83	2.70	8161.39
14849.00	89.45	266.140	7207.79	1506.70	-8118.69	2.02	8248.76
14939.00	89.75	269.760	7208.42	1503.48	-8208.62	4.04	8337.38
15028.00	89.85	272.120	7208.73	1504.94	-8297.60	2.65	8425.72
15118.00	89.88	271.650	7208.94	1507.90	-8387.55	0.52	8515.22
15207.00	89.85	272.670	7209.15	1511.26	-8476.49	1.15	8603.78
15296.00	89.88	272.270	7209.36	1515.09	-8565.40	0.45	8692.38
15386.00	89.94	271.150	7209.50	1517.78	-8655.36	1.25	8781.85
15475.00	90.03	270.170	7209.52	1518.80	-8744.36	1.11	8870.14
15564.00	89.94	269.700	7209.55	1518.70	-8833.36	0.54	8958.28
15654.00	90.52	270.350	7209.19	1518.74	-8923.35	0.97	9047.43
15743.00	90.71	267.080	7208.23	1516.75	-9012.31	3.68	9135.27
15833.00	90.22	270.510	7207.50	1514.86	-9102.28	3.85	9224.12
15922.00	90.12	274.760	7207.24	1518.95	-9191.16	4.78	9312.72
16011.00	89.23	273.070	7207.74	1525.02	-9279.95	2.15	9401.50
16101.00	89.32	270.050	7208.88	1527.47	-9369.90	3.36	9490.93
16190.00	89.94	271.520	7209.46	1528.69	-9458.89	1.79	9579.24
16279.00	90.22	273.550	7209.33	1532.63	-9547.79	2.30	9667.84
16369.00	90.25	274.490	7208.96	1538.94	-9637.57	1.04	9757.64
16458.00	89.97	274.400	7208.79	1545.83	-9726.30	0.33	9846.47
16547.00	90.15	273.400	7208.70	1551.89	-9815.09	1.14	9935.25
16637.00	90.12	271.910	7208.49	1556.06	-9905.00	1.66	10024.87
16726.00	90.09	269.430	7208.32	1557.10	-9993.98	2.79	10113.16
16816.00	90.03	266.950	7208.23	1554.25	-10083.93	2.76	10201.86
16905.00	90.12	267.720	7208.11	1550.12	-10172.83	0.87	10289.35
16995.00	89.91	269.860	7208.09	1548.22	-10262.81	2.39	10378.21
17084.00	90.12	269.200	7208.06	1547.49	-10351.80	0.78	10466.26
17174.00	90.22	268.930	7207.80	1546.02	-10441.79	0.32	10555.19
17263.00	90.25	268.850	7207.43	1544.29	-10530.77	0.10	10643.09
17353.00	90.37	269.770	7206.95	1543.21	-10620.77	1.03	10732.08
17443.00	90.31	270.170	7206.41	1543.16	-10710.76	0.45	10821.22
17532.00	90.37	270.420	7205.88	1543.62	-10799.76	0.29	10909.43
17621.00	90.03	268.550	7205.57	1542.82	-10888.75	2.14	10997.47
17711.00	89.78	268.740	7205.72	1540.69	-10978.73	0.35	11086.29
17719.00	89.78	268.740	7205.75	1540.52	-10986.73	0.06	11094.19
17756.99	89.80	268.730	7205.89	1539.68	-11024.71	0.06	11131.70
17768.59	89.81	268.730	7205.93	1539.42	-11036.30	0.06	11143.15
17790.00	89.82	268.720	7206.00	1538.94	-11057.71	0.06	11164.28
17805.52	89.82	268.720	7206.05	1538.59	-11073.22	==>	11179.60
17814.00	89.82	268.720	7206.07	1538.41	-11081.70	==>	11187.98

Comments

MD[ft]	TVD[ft]	North[ft]	East[ft]	Comment
1572.00	1571.99	-1.25	-0.74	9.625" Csg: 1572 MD/TVD
8111.69	7225.76	1471.71	-1386.91	460 Setback: 8112 / 7226 MD/TVD, 1995 FNL, 460 FEL Sec 12
8206.00	7226.09	1474.59	-1481.17	Top Perf: 8206 / 7226 MD/TVD, 1990 FNL, 554 FEL Sec 12
17719.00	7205.75	1540.52	-10986.73	Btm Perf: 17,719 / 7206 MD/TVD, 1973 FNL, 510 FWL Sec 11
17756.99	7205.89	1539.68	-11024.71	Btm Toe Sub: 17,757 / 7206 MD/TVD, 1975 FNL, 472 FWL Sec 11
17768.59	7205.93	1539.42	-11036.30	460 Setback: 17,769 / 7206 MD/TVD, 1976 FNL, 460 FWL Sec 11
17805.52	7206.05	1538.59	-11073.22	PBTD: 17,806 / 7206 MD/TVD, 1978 FNL, 423 FWL Sec 11
17814.00	7206.07	1538.41	-11081.70	5.5" Csg: 17,814 / 7206 MD/TVD, 1978 FNL, 415 FWL Sec 11
17814.00	7206.07	1538.41	-11081.70	BHL: 17,814 / 7206 MD/TVD, 1978 FNL, 415 FWL Sec 11

Hole Sections

Diameter [in]	Start MD[ft]	Start TVD[ft]	Start North[ft]	Start East[ft]	End MD[ft]	End TVD[ft]	End North[ft]	End East[ft]
13.500	0.00	0.00	0.00	0.00	1572.00	1571.99	-1.25	-0.74
8.500	1572.00	1571.99	-1.25	-0.74	17814.00	7206.07	1538.41	-11081.70

Casings

Name	Top MD[ft]	Top TVD[ft]	Top North[ft]	Top East[ft]	Shoe MD[ft]	Shoe TVD[ft]	Shoe North[ft]	Shoe East[ft]
9 5/8in Casing	0.00	0.00	0.00	0.00	1572.00	1571.99	-1.25	-0.74
5 1/2in Casing	0.00	0.00	0.00	0.00	17814.00	7206.07	1538.41	-11081.70

Survey Tool Program

Reference	Survey Name	MD[ft]	TVD[ft]	Survey Tool
375101	As Drilled - 20180529	17814.00	7206.07	MWD

Coordinates are from Slot MD's are from Rig and TVD's are from Rig (Actual Datum #1 4753.8ft above Mean Sea Level)
Vertical Section is from 0.00 0.00 on azimuth 277.900 degrees
Bottom hole distance is 11187.98 Feet on azimuth 277.90 degrees from Wellhead
Calculation method uses Minimum Curvature method
Prepared by Great Western Operating Co.
Date Printed: