

Comments

- 1
- Depth measurements were obtained from a depth control system not supplied or operated by Baker Hughes, a GE Company (BHGE). Due to the lack of control by Baker Hughes, depth calibrations and measurements could not be independently verified.
- 2
- BHGE LWD run 1 utilized a 6.75 inch NaviGamma service (Directional and Gamma Ray) behind a 8.5 inch bit and rotary steerable assembly from 1775 to 17745 feet MD (1775 to 7454 feet TVD).

Remarks

Number	Measured Depth (ft)	Hole Section (in)	Run No.	Remark
1	17730.00	8.500	1	The interval from 17732 to 17745 feet MD (7456 feet TVD) was not logged after being drilled due to sensor to bit offset at well TD.

Curve Mnemonics

Presented Curves	Description	Units
ROPA	Depth Averaged ROP 3 ft Average	ft/h
TVD	True Vertical Depth	ft
WOBA	Weight On Bit, Average 1 ft Average	klb
GRAM	Gamma Ray - Apparent - Memory 0.5 ft Average	API
GRIM	Gamma Ray - Data Point Indicator - Memory	unitless
GRTM	Gamma Ray - Time Since Drilled - Memory	min
TCDM	Directional Real-Time Survey Temperature	degF



Company

Well

Interval

Created

GREAT WESTERN OPERATING COMPANY LLC

OTTESEN LE 09-368HN

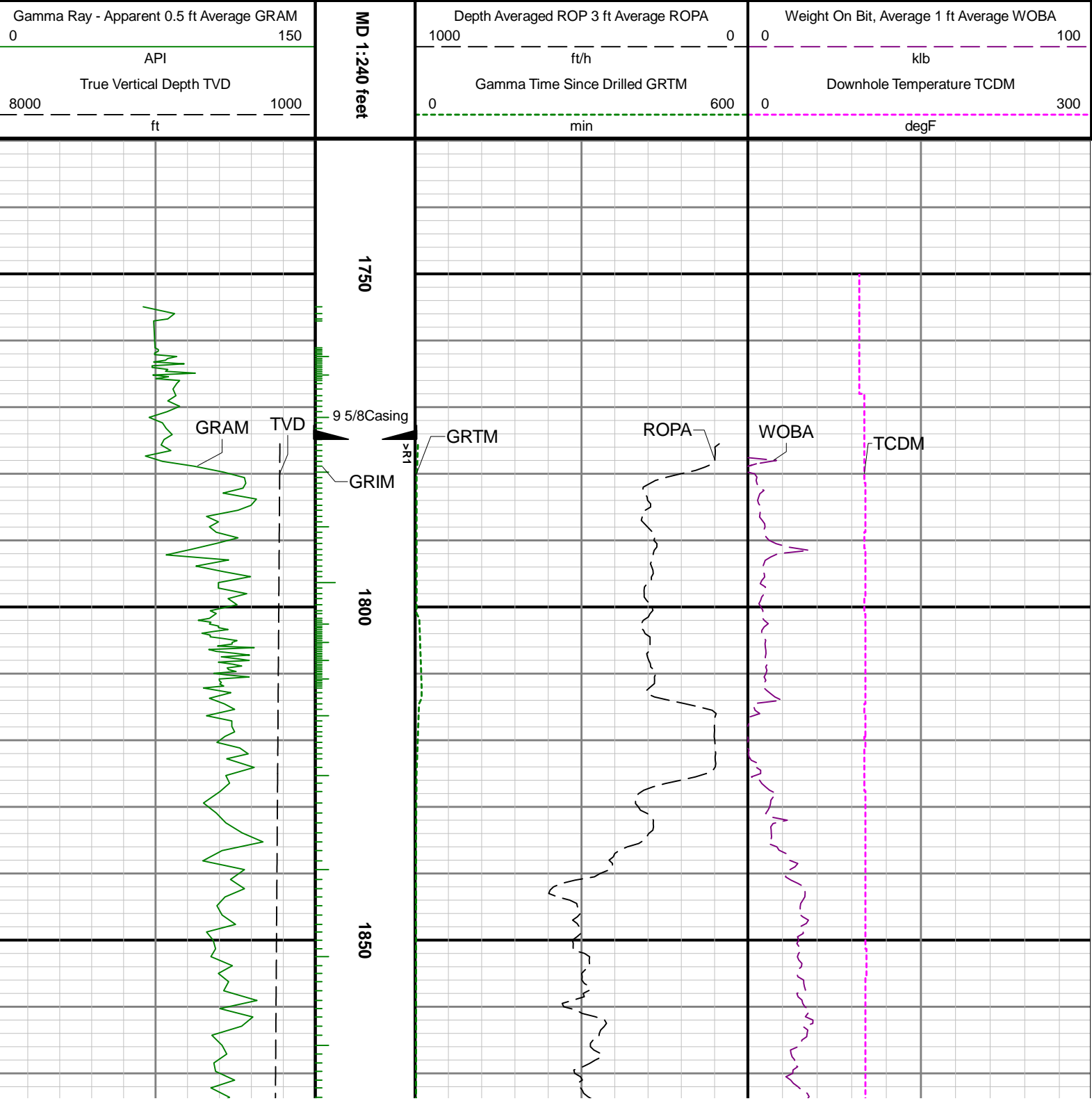
Date From: 2018-12-18 05:15

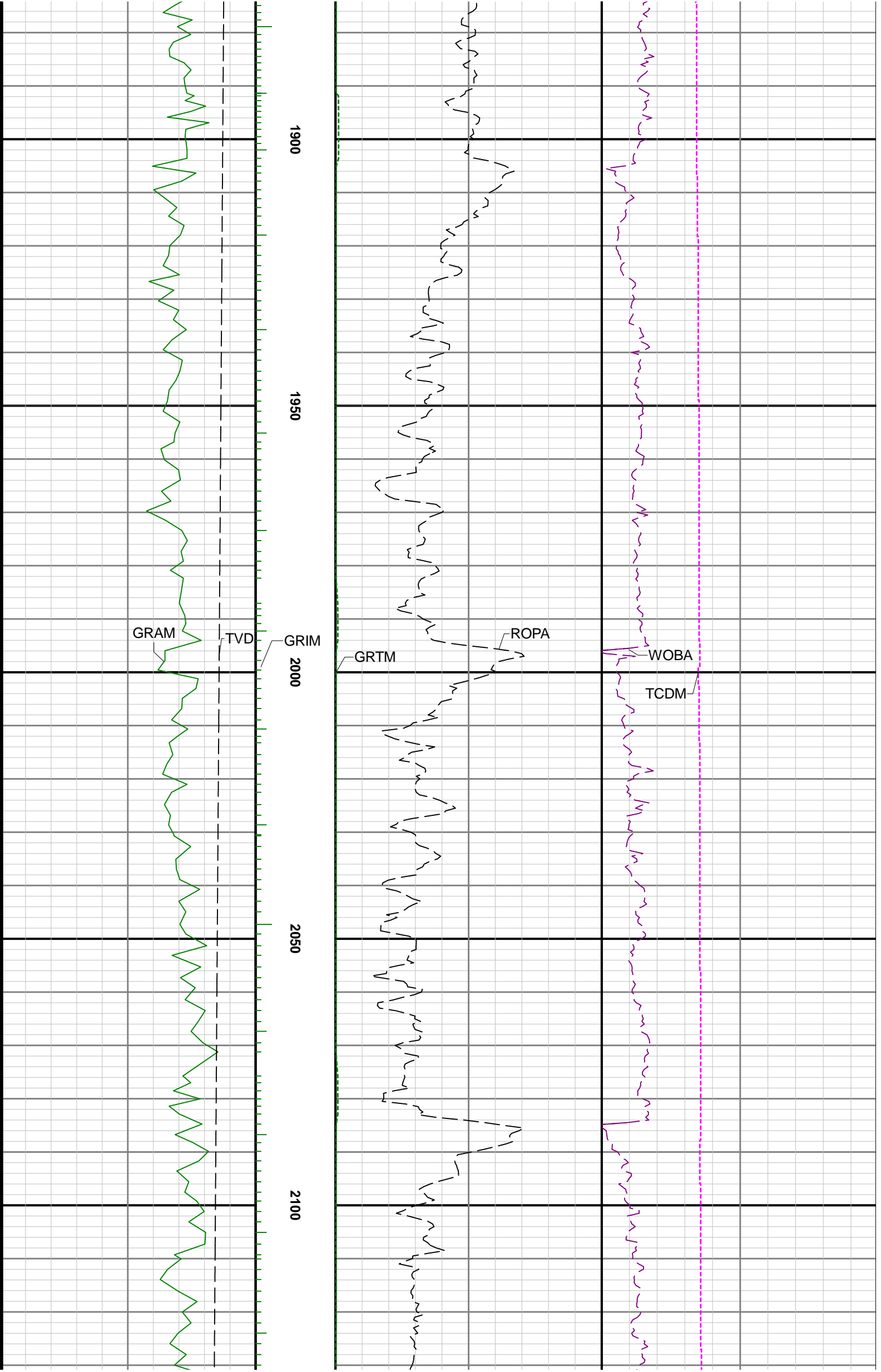
Date To: 2018-12-22 07:06

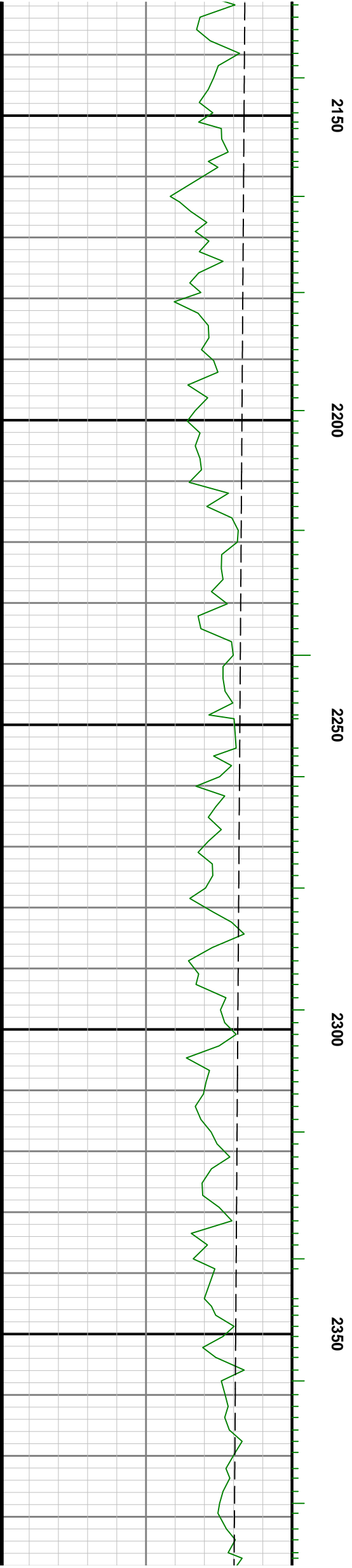
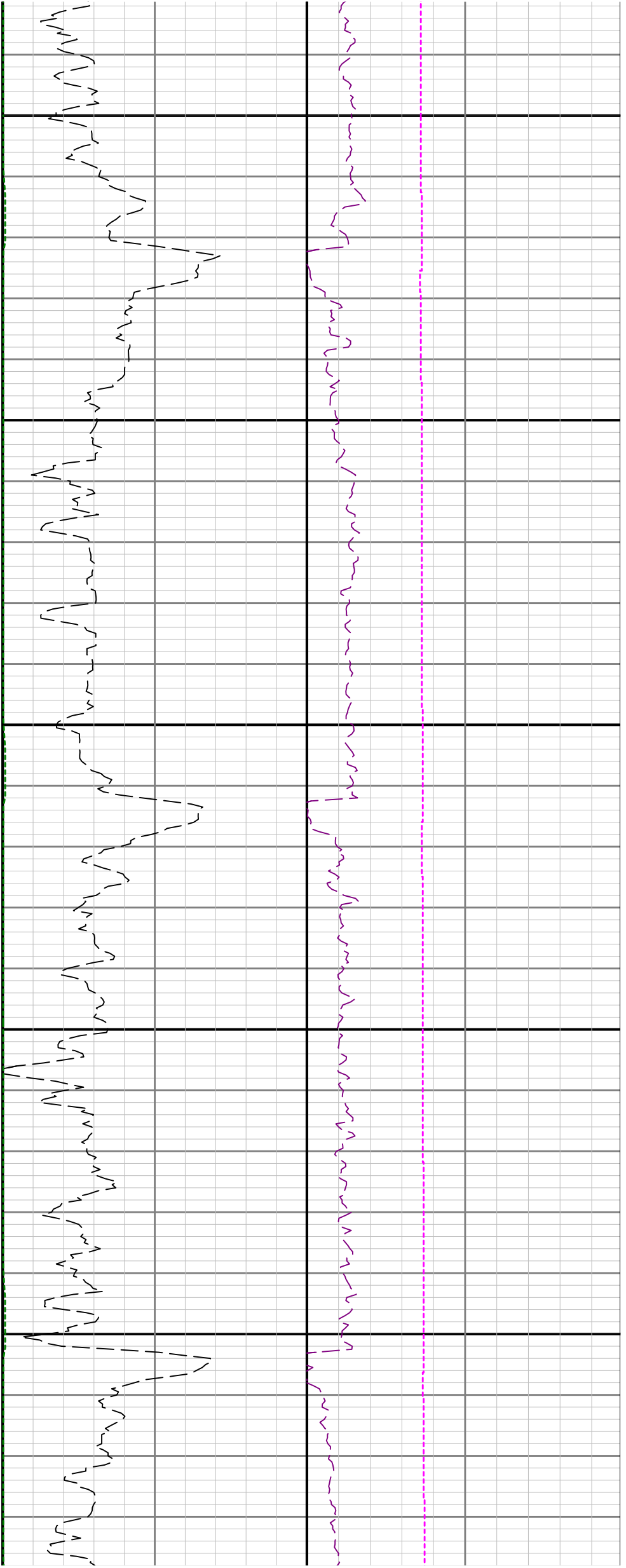
2018-12-22 11:34:19

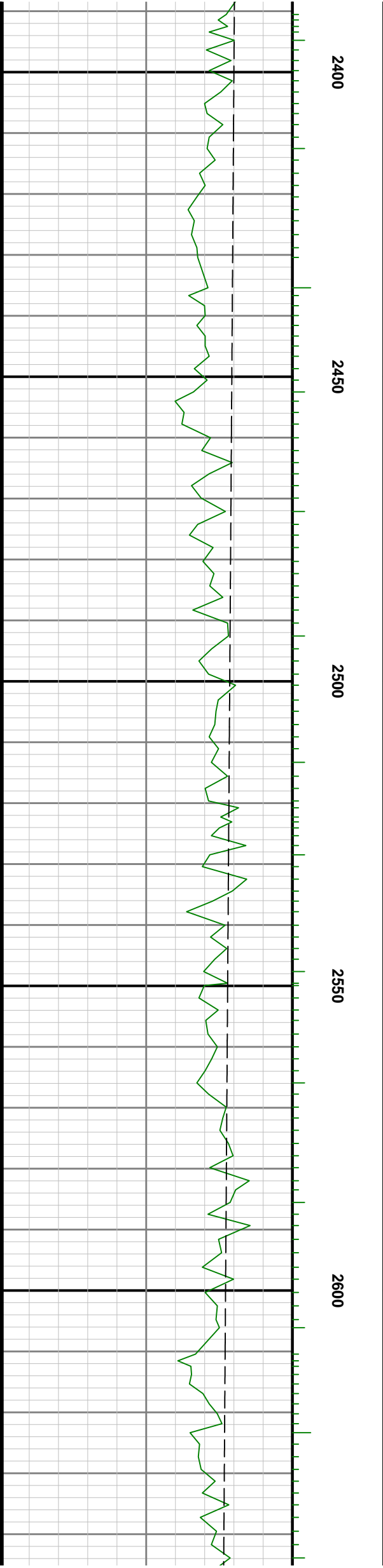
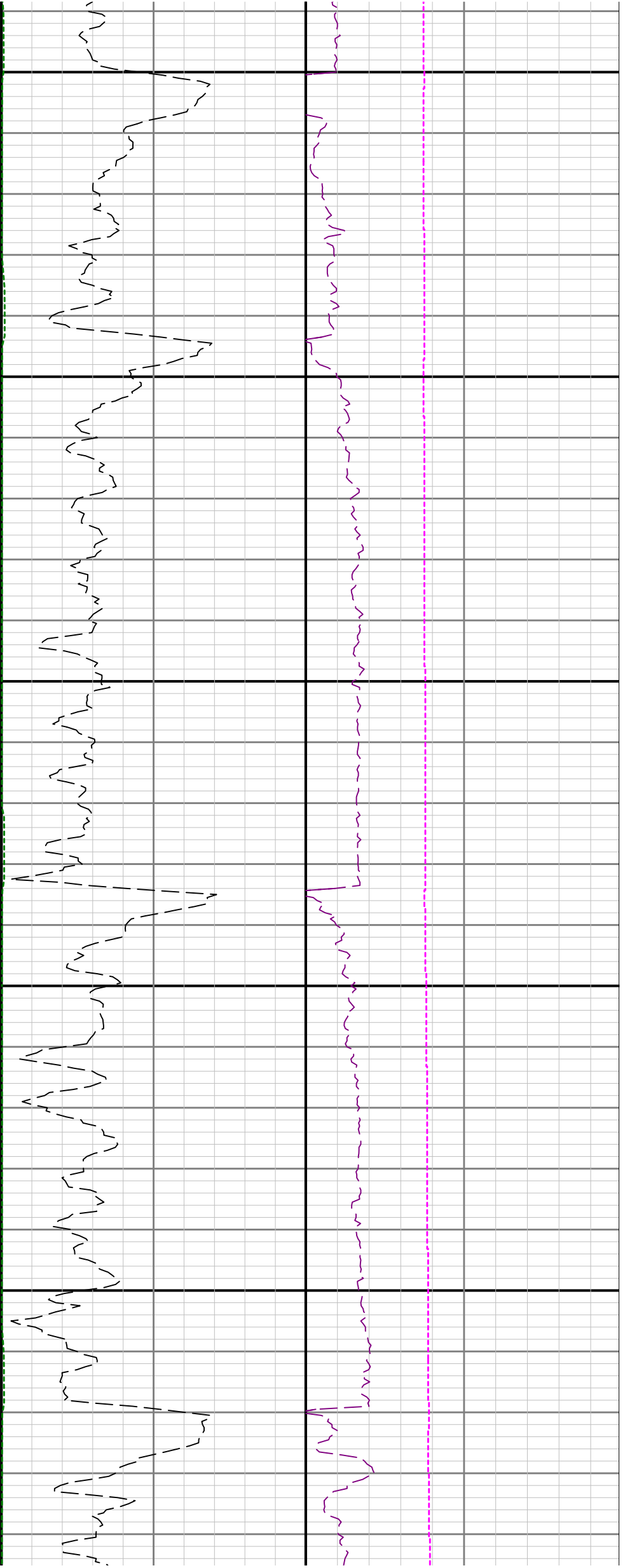
Top: 1775.00 ft

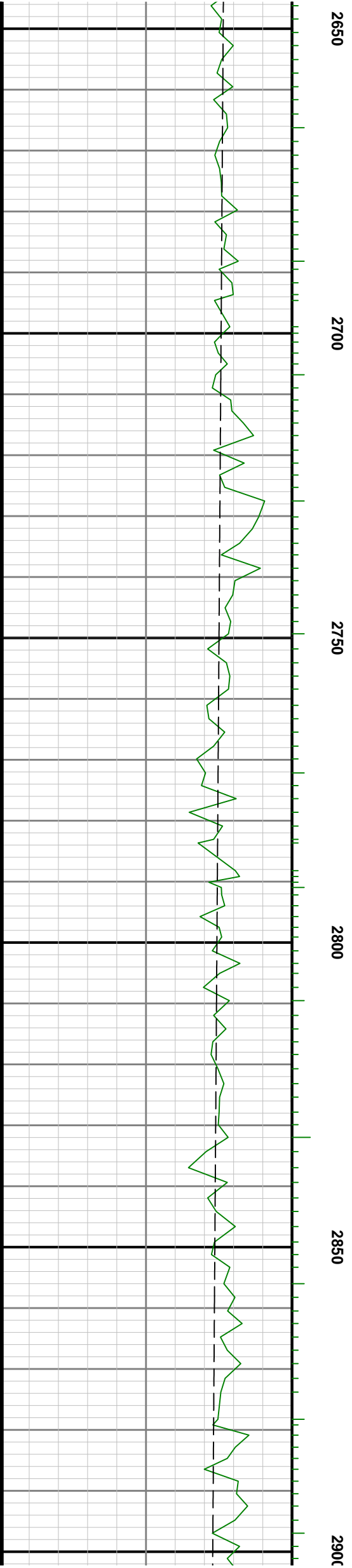
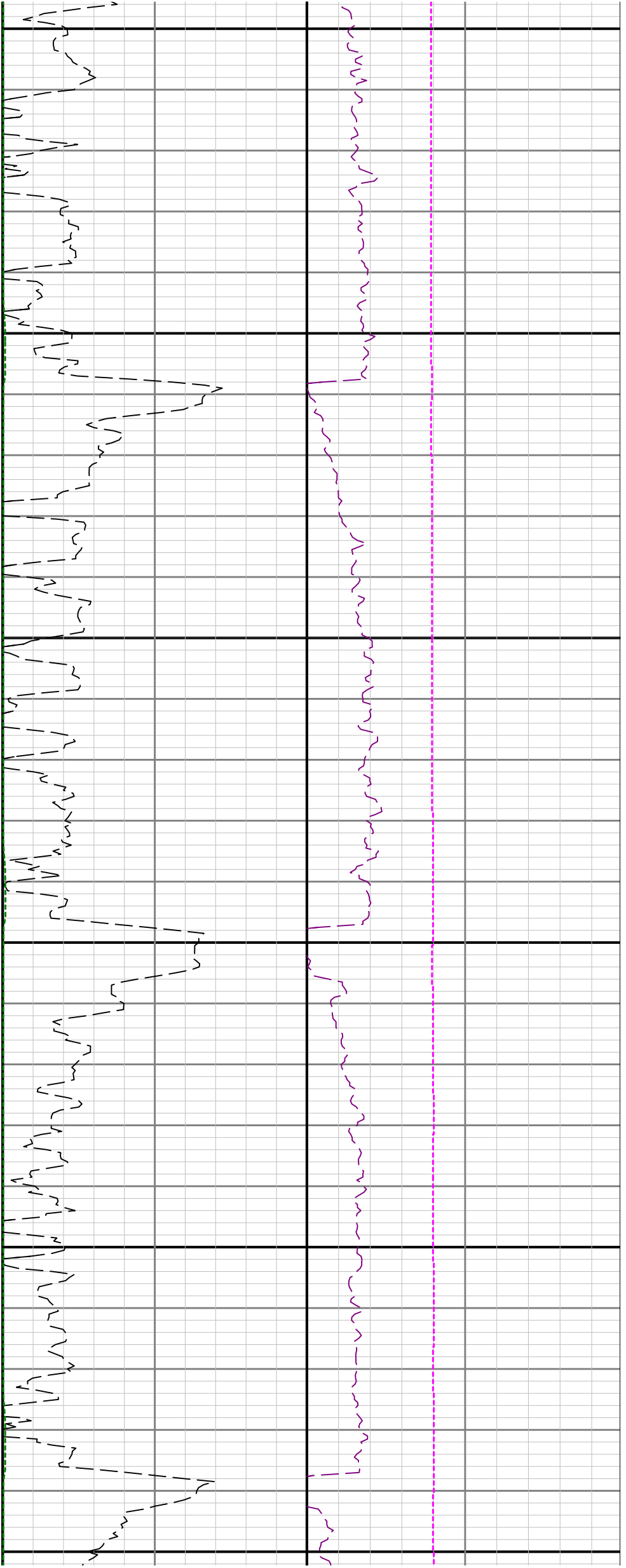
Bottom: 17745.28 ft

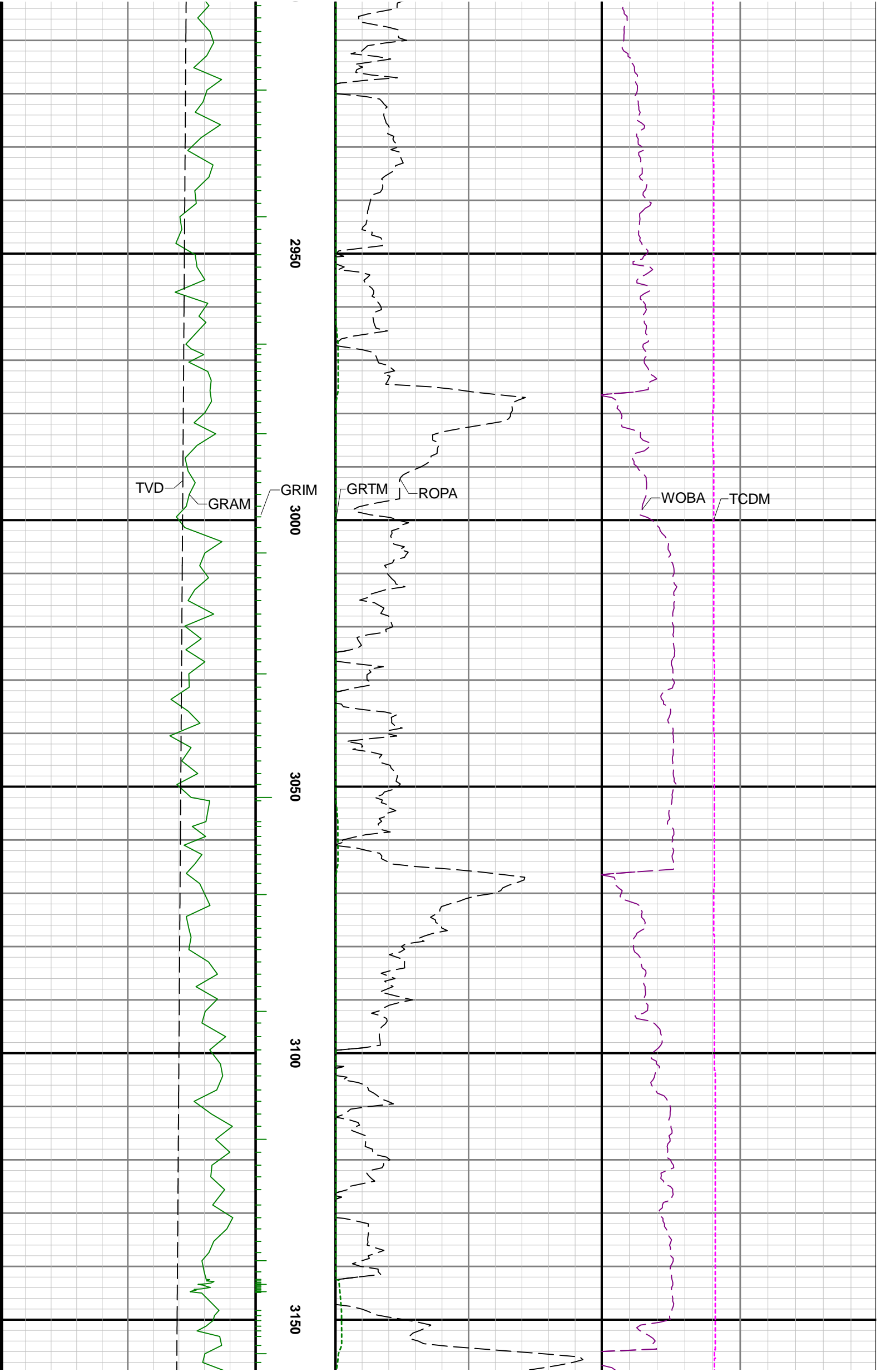


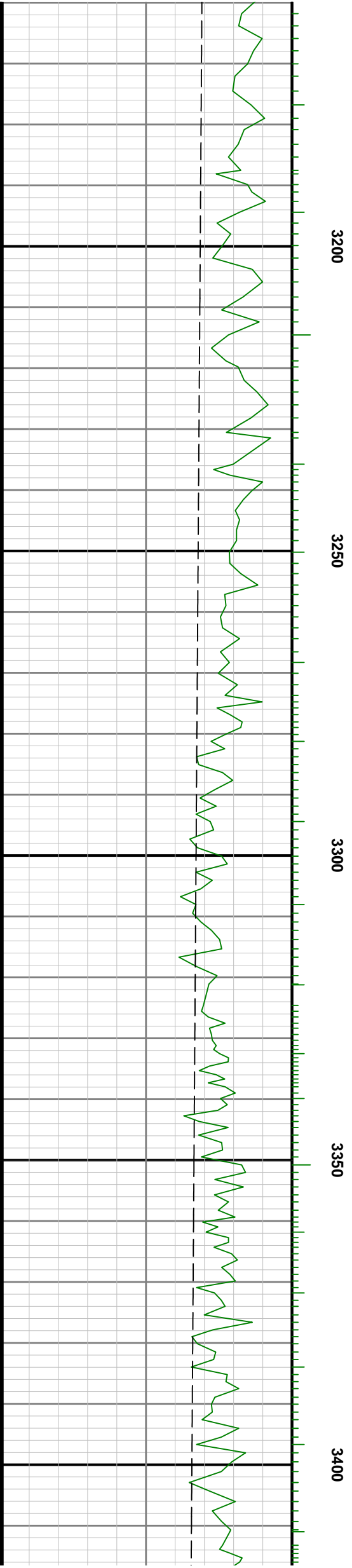
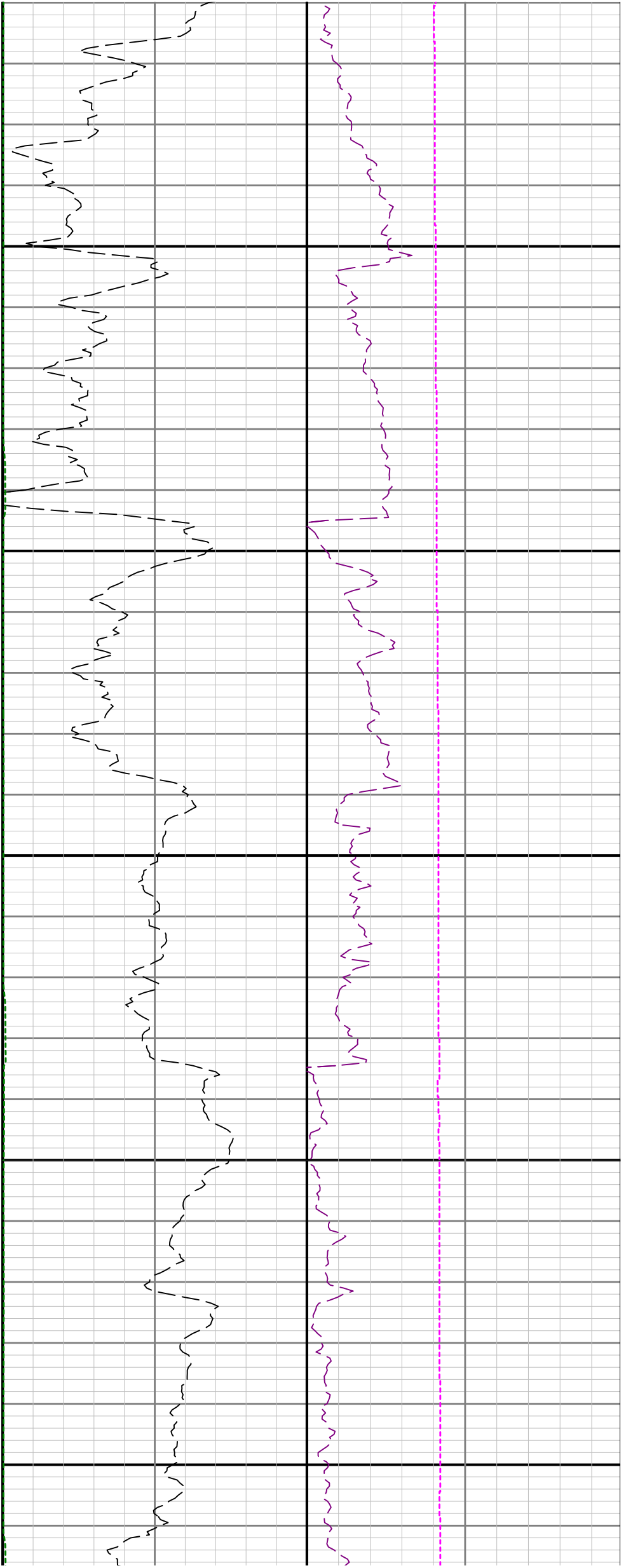


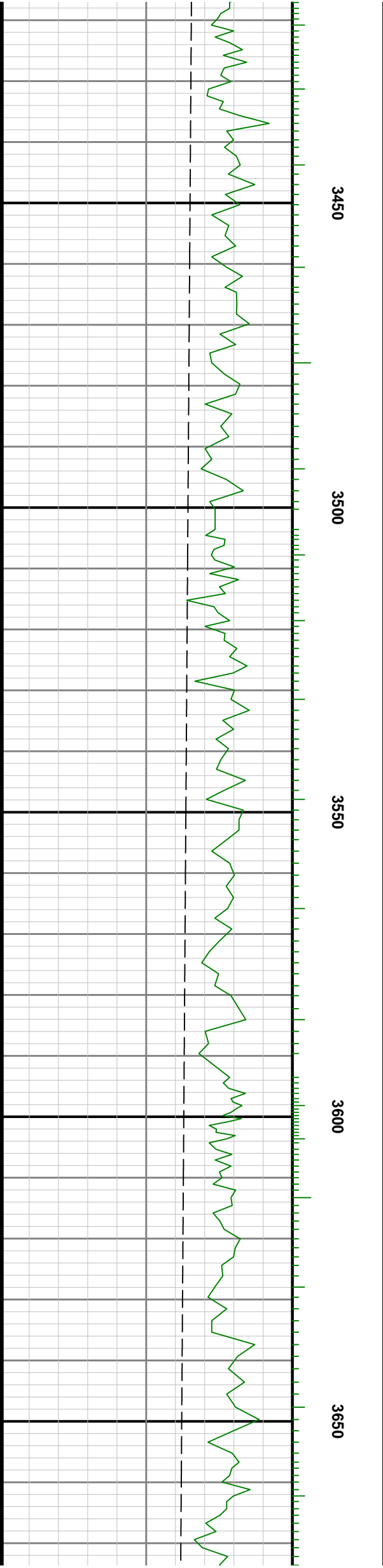
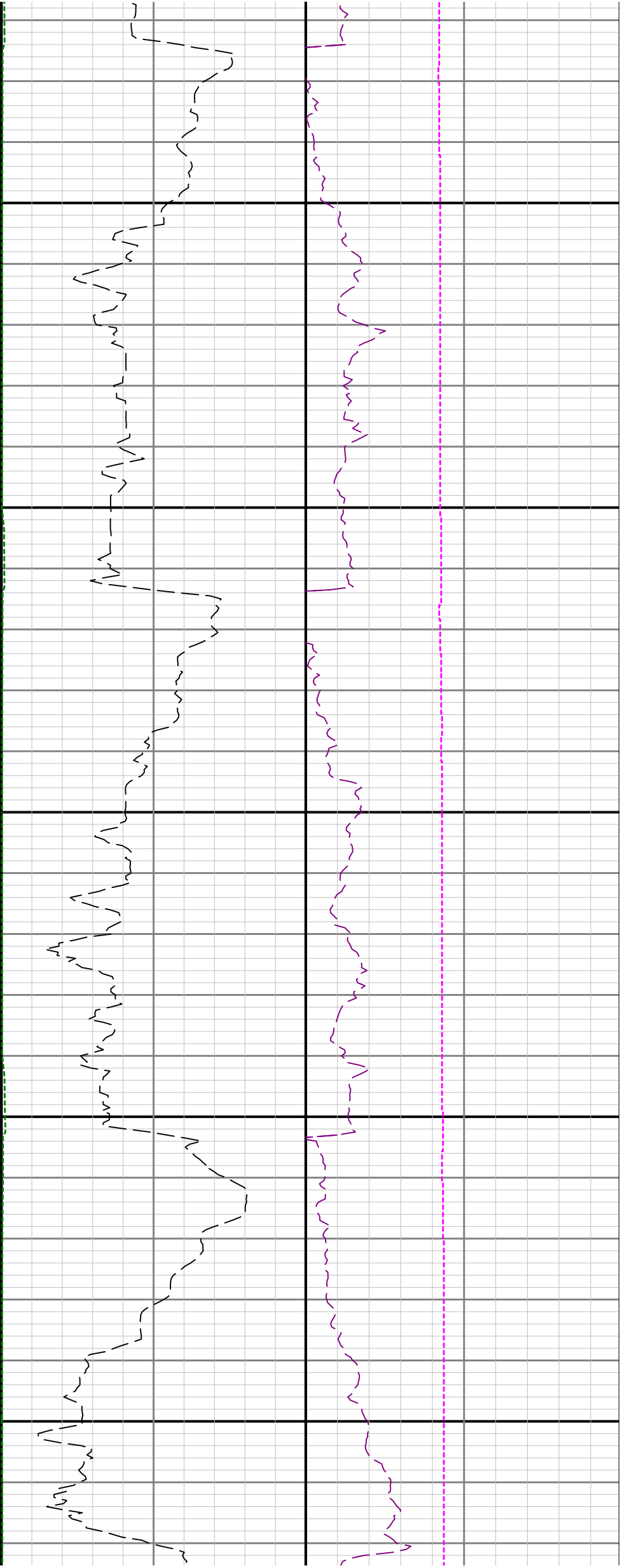


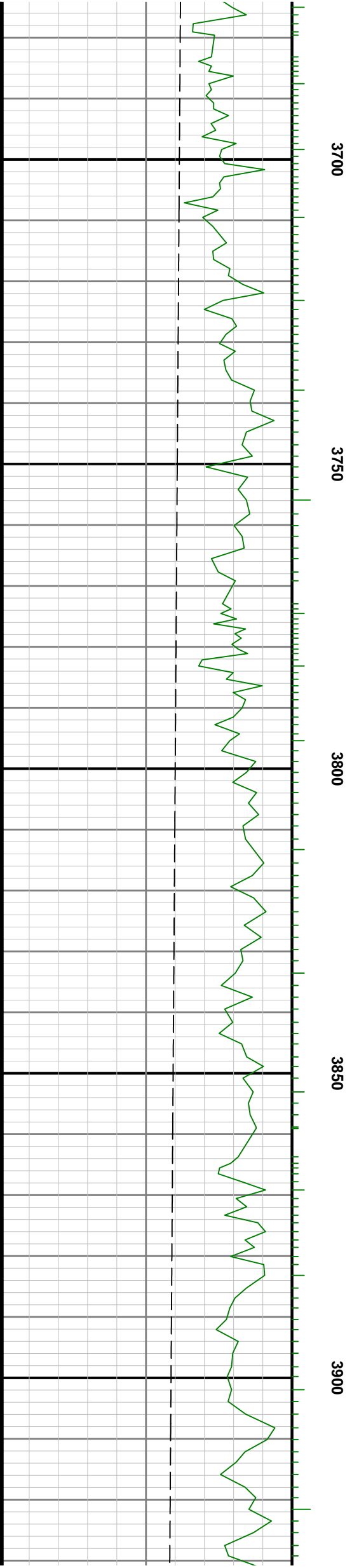
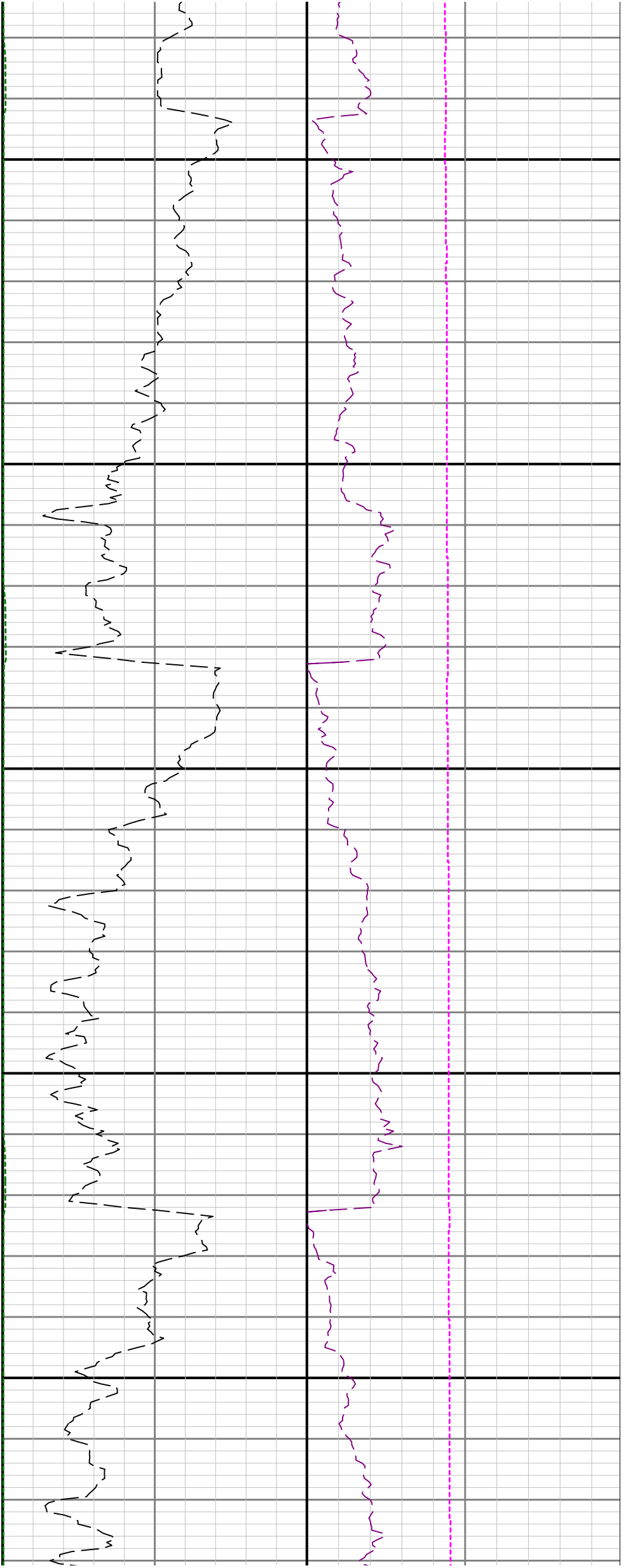


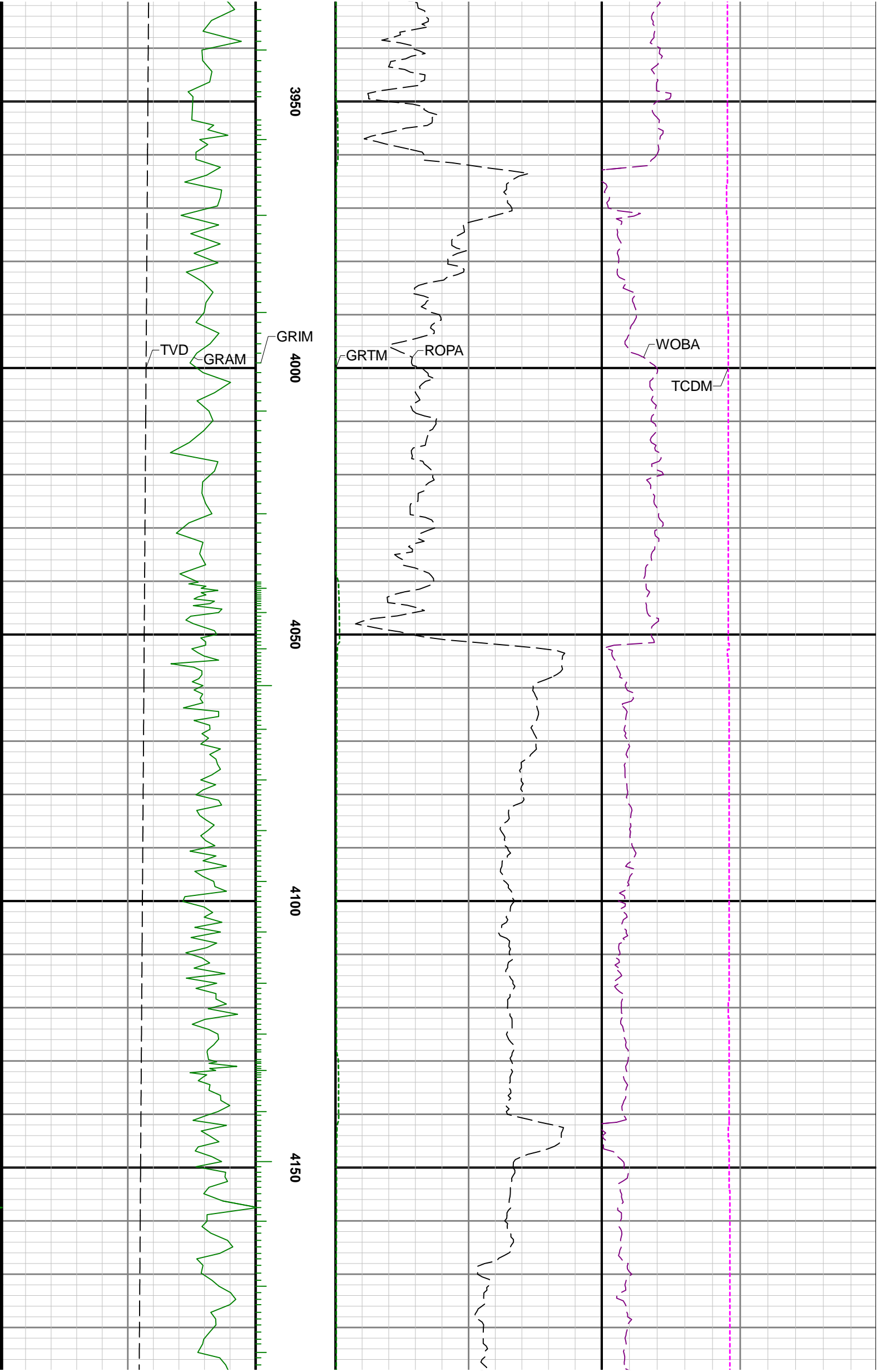


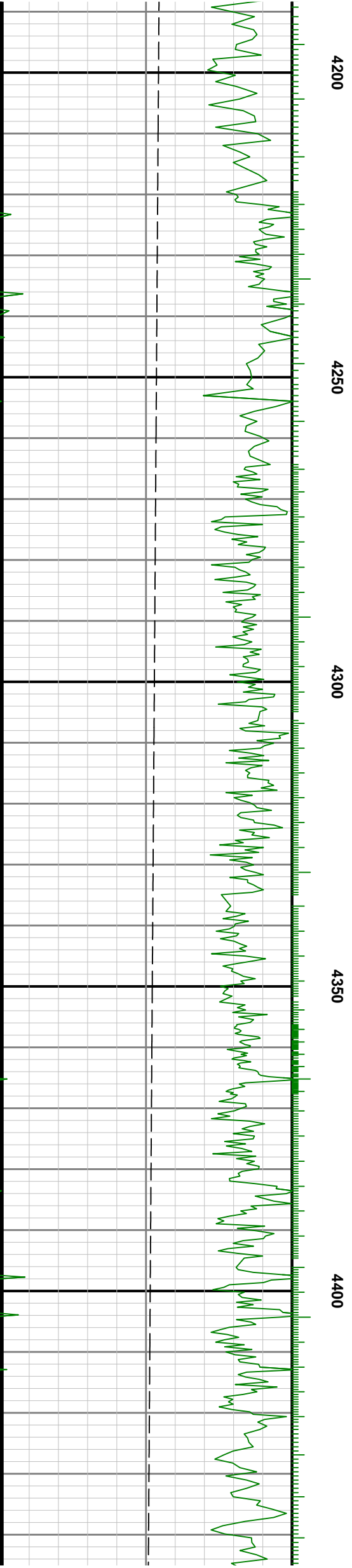


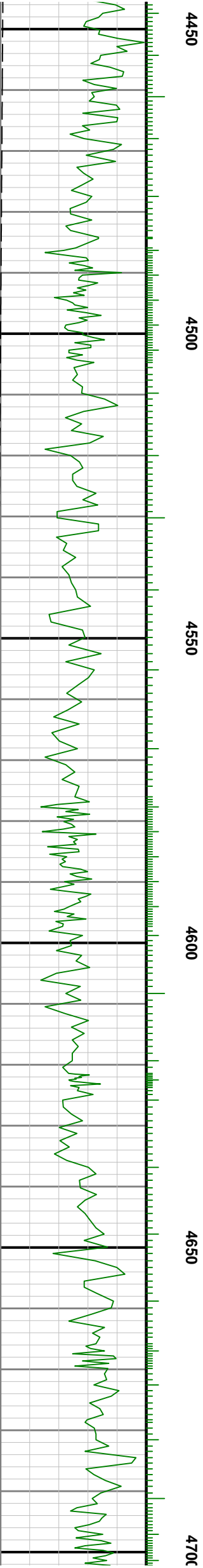
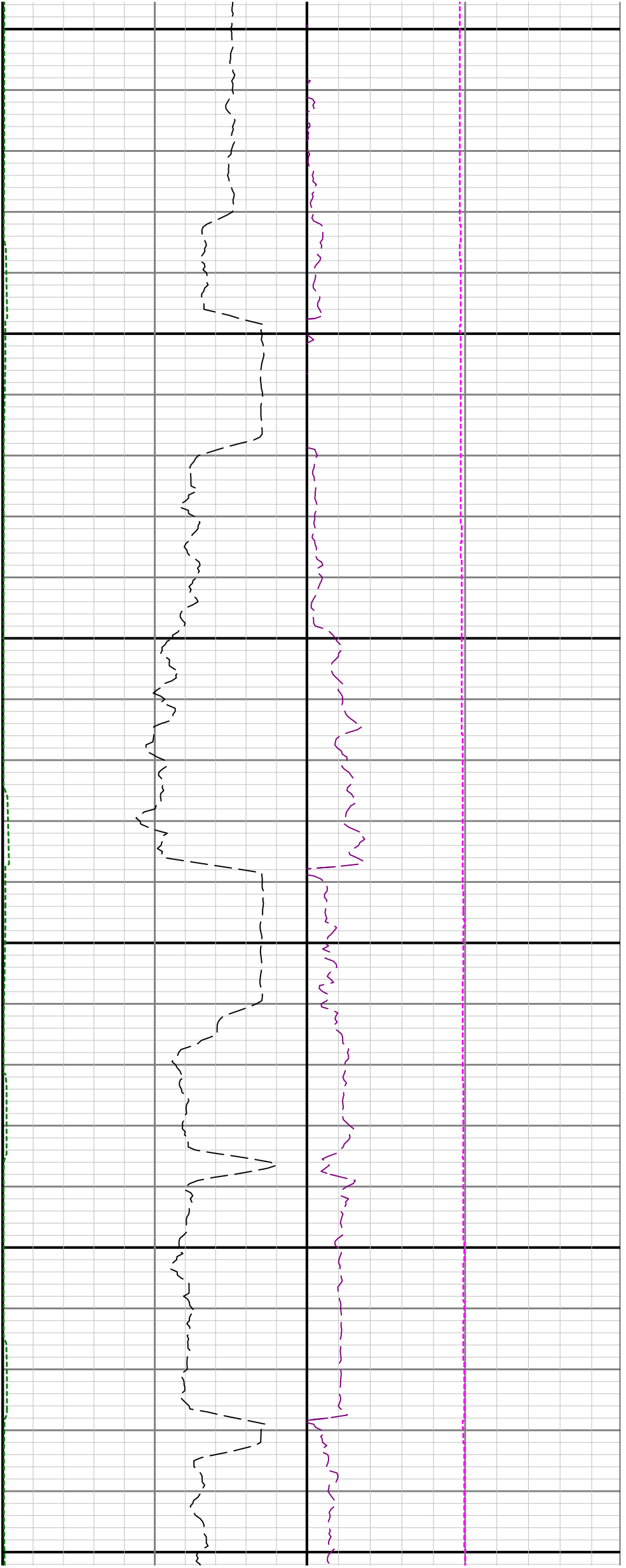


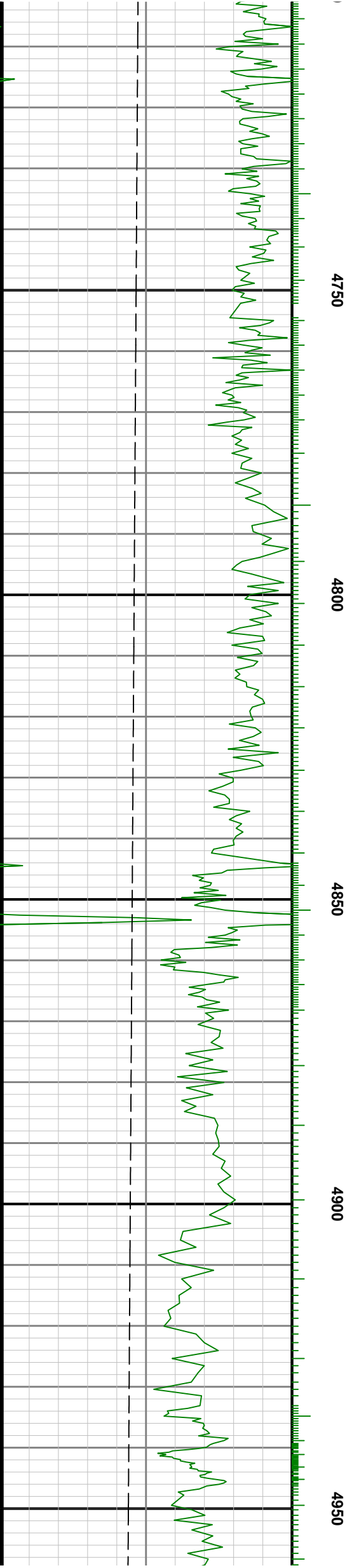
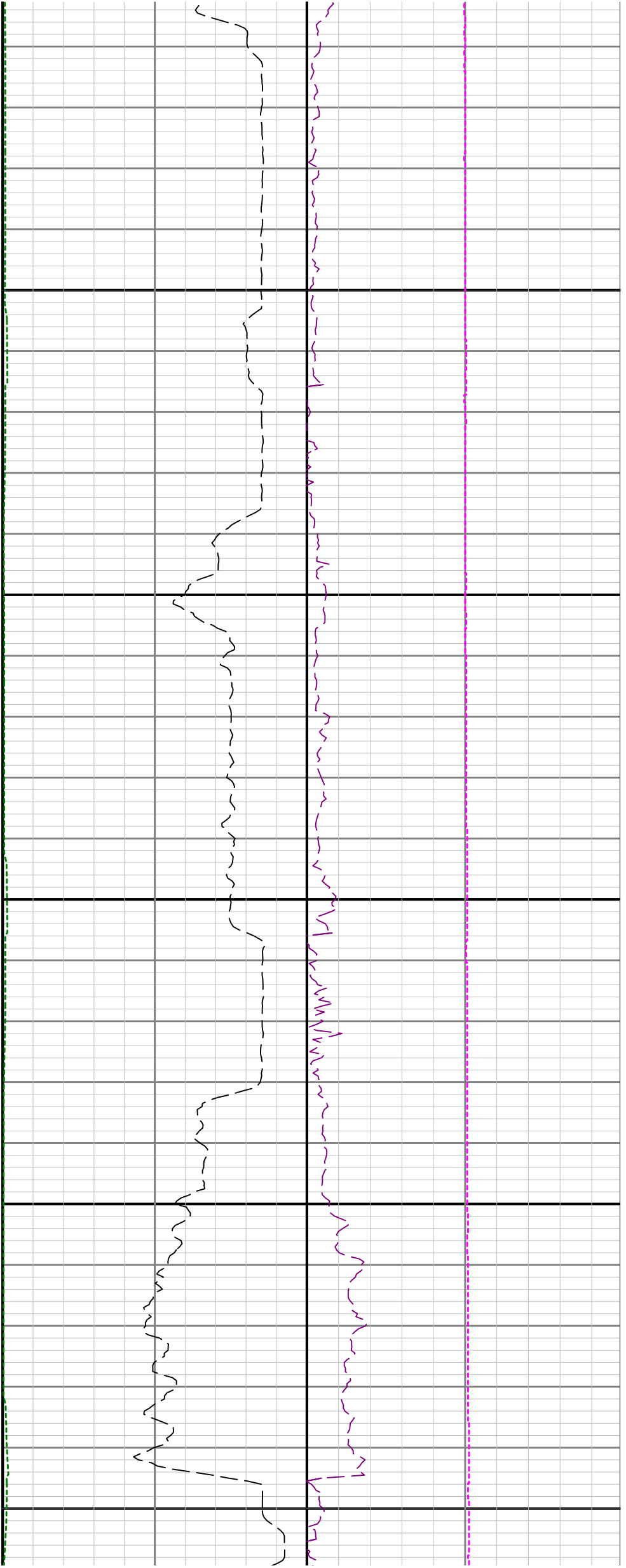


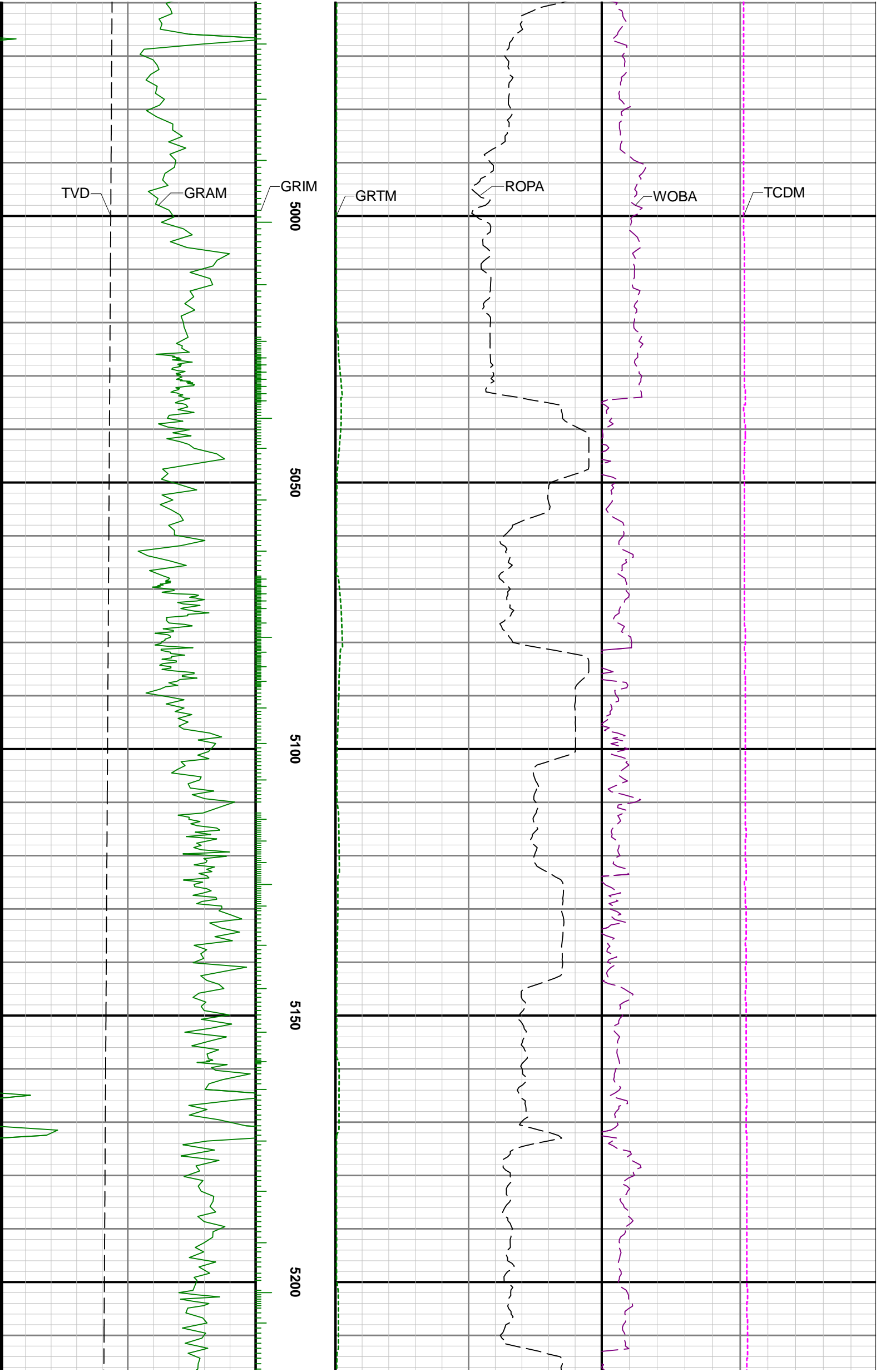


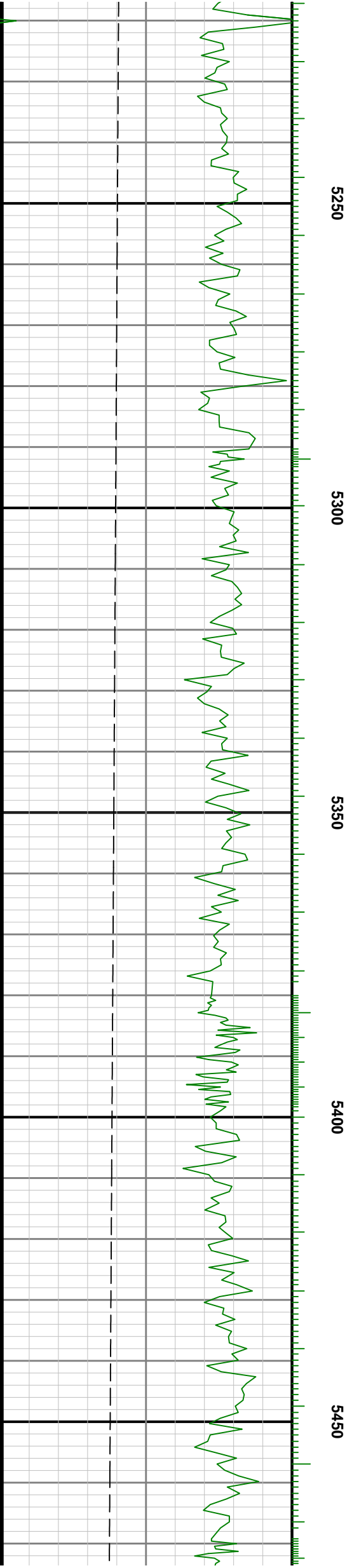
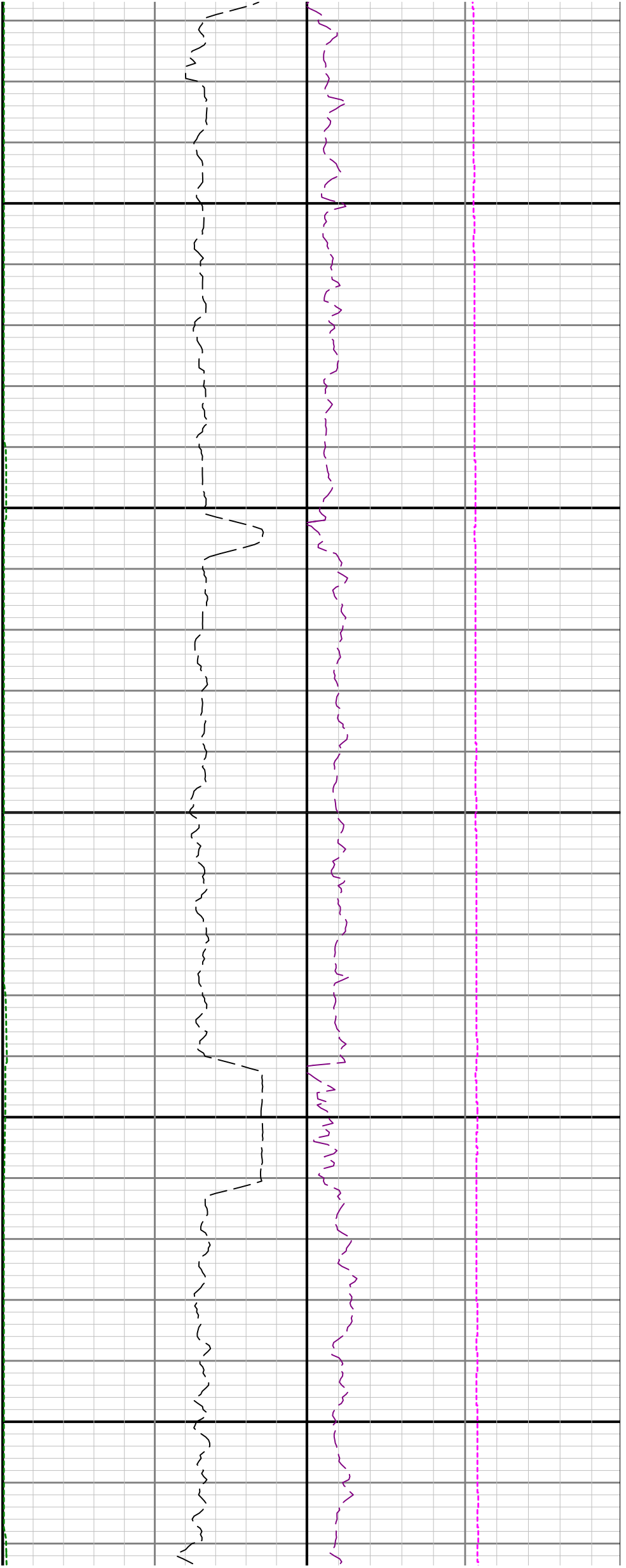


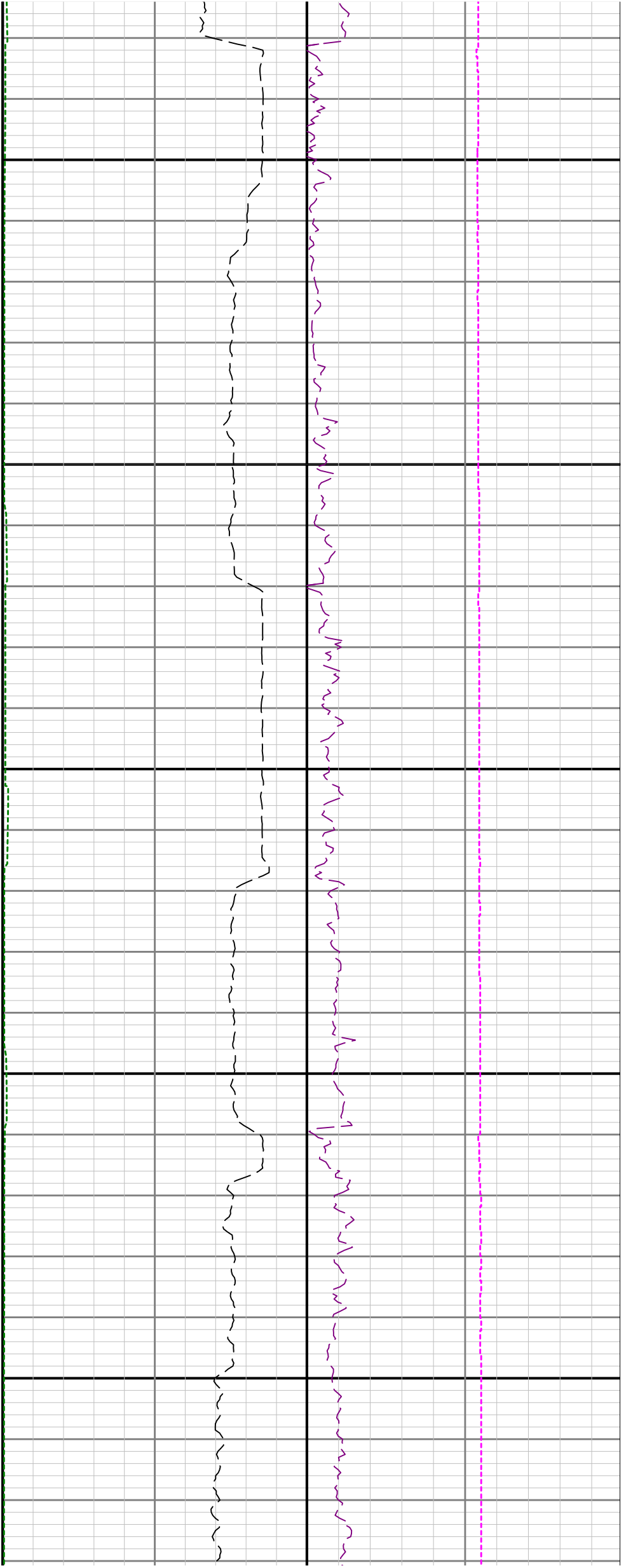












5500

5550

5600

5650

5700

