

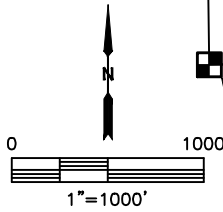
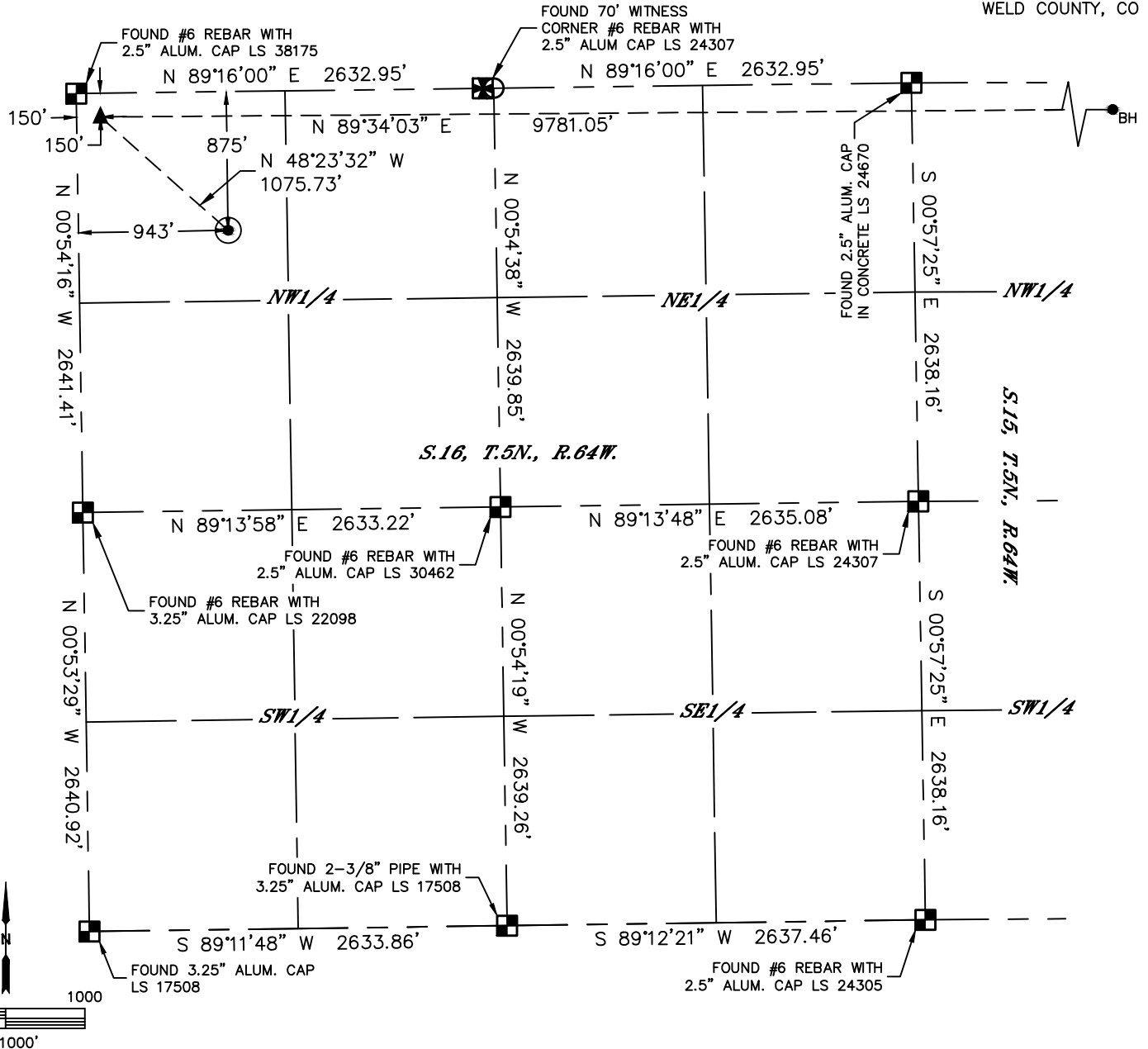


Lat40°, Inc. 6250 W. 10th Street, Unit 2, Greeley, CO 970-515-5294

# WELL LOCATION CERTIFICATE

## WATERMELON 1N

SECTION: 16  
TOWNSHIP: 5N  
RANGE: 64W  
6TH. P.M.  
WELD COUNTY, CO



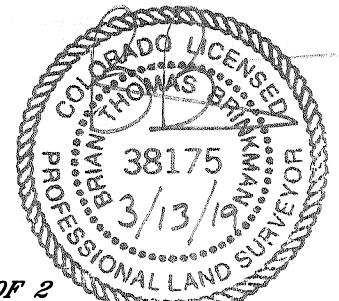
CLIENT: PDC ENERGY, INC.					LANDMAN: BARNEY HAMMOND				
INSTRUMENT OPERATOR: SCOTT SHERARD					SURVEY DATE: 2/26/2019		SURFACE USE: CROPLAND		
SHL FOOTAGE		SHL LAT°	SHL LONG°	SHL PDOP	SHL ELEV (FT.)	SHL 1/4/1/4	SHL S-T-R		
875	FNL	943	FWL	40.40416	-104.56108	1.8	4610	NWNW	16-5-64

BHL FOOTAGE		BHL LAT°	BHL LONG°	BHL S-T-R	EP LAT°	EP LONG°	EP S-T-R		
150	FNL	500	FEL	40.40606	-104.52883	15-5-64	40.40614	-104.56394	16-5-64

- LEGEND**
- ALIQUOT MONUMENT AS DESCRIBED
  - CALCULATED POSITION
  - SURFACE HOLE LOCATION (SHL)
  - ENTRY POINT LOCATION (EP)
  - BOTTOM HOLE LOCATION (BHL)
  - EXISTING WELL
  - ABANDONED WELL

**NOTE:**

- 1) Bearings shown are Grid Bearings of the Colorado State Plane Coordinate System, North Zone, North American Datum 1983. The lineal dimensions as contained herein are based upon the "U.S. Survey Foot."
- 2) Distances to section lines measured at 90 degrees from said section lines.
- 3) Ground elevations are based on an observed GPS elevation (NAVD 1988 DATUM).
- 4) Latitude and Longitude shown are (NAD 83 DATUM).
- 5) IMPROVEMENTS: See LOCATION DRAWING for all visible improvements within 500' of oil and gas location.
- 6) This map does not represent a boundary survey.



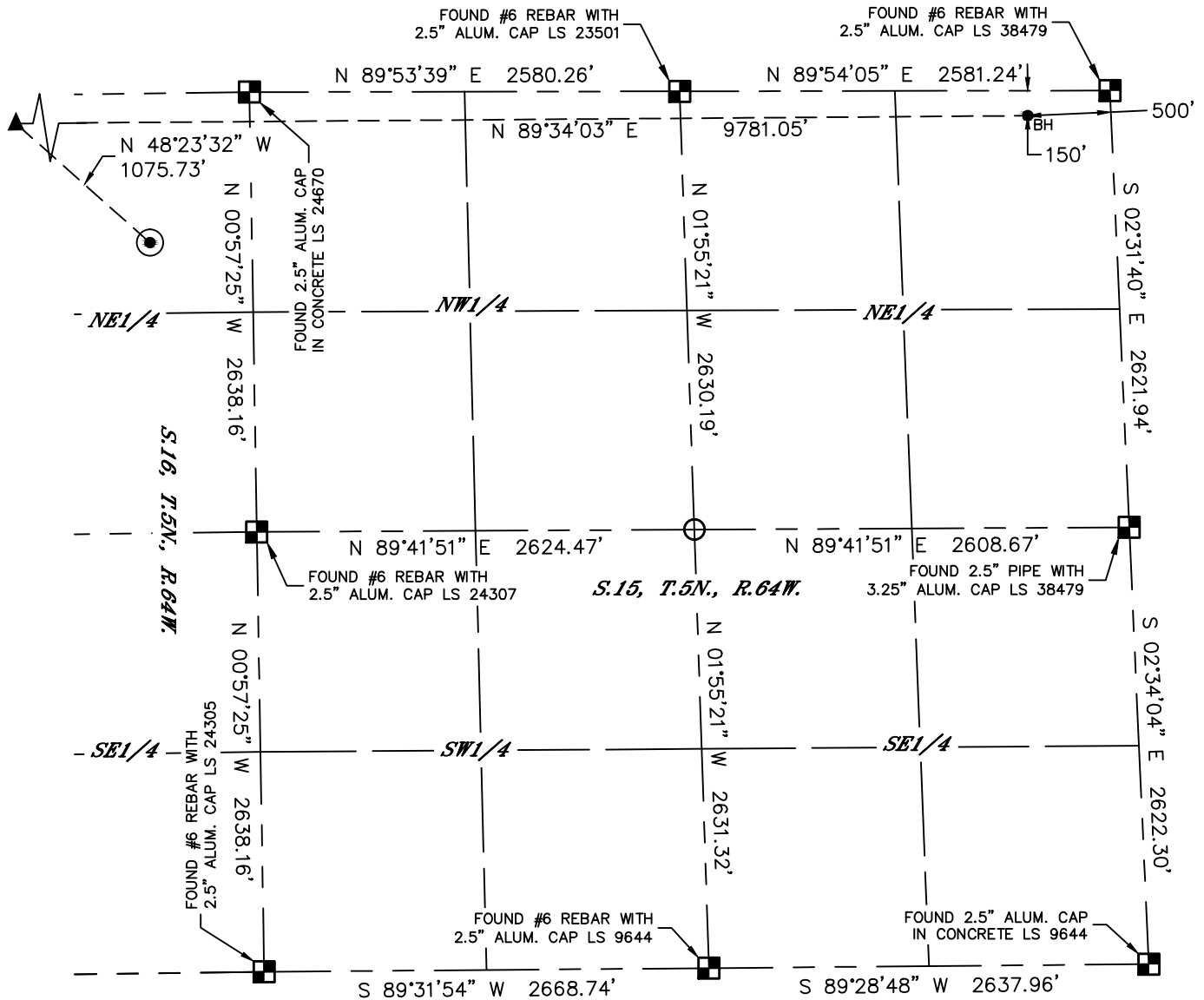
**SHEET 1 OF 2**

Brian T. Brinkman—On behalf of Lat40°, Inc.  
Colorado Licensed Professional Land Surveyor No. 38175  
DATE: 3/13/2019  
PROJECT#: 2018236



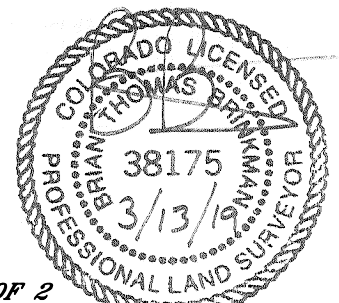
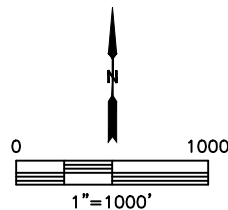
# WELL LOCATION CERTIFICATE

## WATERMELON 1N



### LEGEND

- = ALIQUOT MONUMENT AS DESCRIBED
- = CALCULATED POSITION
- = SURFACE HOLE LOCATION (SHL)
- = ENTRY POINT LOCATION (EP)
- = BOTTOM HOLE LOCATION (BHL)
- = EXISTING WELL
- = ABANDONED WELL



**SHEET 2 OF 2**