

HALLIBURTON

iCem® Service

HIGHPOINT RESOURCES CORP-EBUS

For: Chris Moore

Date: Sunday, January 27, 2019

Wetco 4-63-05-4033CB

Job Date: Sunday, January 27, 2019

Sincerely,

Nick Cummins

Legal Notice

Disclaimer:

All information in this report is provided subject to the terms and conditions which govern the services provided by Halliburton. Halliburton personnel use their best efforts in gathering information and their best judgment in interpreting it, but any interpretation, research, analysis or recommendation furnished by Halliburton are opinions based upon inferences from measurements and empirical relationships and assumptions, which inferences and empirical relationships and assumptions are not infallible, and with respect to which professionals in the industry may differ. iCem 3D Displacement results are used to understand how fluids intermix during a cement job. Simulation and 3D displacement results are not intended as and should not be used as a replacement for bond logs in determining top of cement. Current 3D model calculations are known to model more volume than the input volume for standard cases due to known calculation improvements required. For rotational cases, the modeled volume will be impacted by the same calculations impacting the standard cases, as well as additional constraints imposed to make the calculation time required operationally feasible. Therefore, until further notice, 3D displacement results should not be used for replacement of a bond log, or used as an identifier of top of cement. HALLIBURTON IS UNABLE TO GUARANTEE THE ACCURACY OF ANY CHART INTERPRETATION, RESEARCH ANALYSIS, OR JOB RECOMMENDATION and any interpretation or recommendation is not for use of or reliance upon by any third party. The customer has full responsibility for any of its decisions which are based on the information provided in this report.

Table of Contents

Cementing Job Summary **Error! Bookmark not defined.**
 Executive Summary **Error! Bookmark not defined.**
Real-Time Job Summary **Error! Bookmark not defined.**
 Job Event Log **Error! Bookmark not defined.**
Attachments..... 9
 Cement Job Without Events.png **Error! Bookmark not defined.**
 Cement Job With Events.png **Error! Bookmark not defined.**

1.0 Cementing Job Summary

1.1 Executive Summary

Halliburton appreciates the opportunity to perform the cementing services on the **Wetco 4-63-05-4033CB** cement **production** casing job. A pre-job safety meeting was held before the job where details of the job were discussed, potential safety hazards were reviewed, and environmental compliance procedures were outlined.

Approximately 0 bbls of cement were returned to surface.

Halliburton maintains a continuous quality improvement process and appreciates any comments or suggestions that you may have. Halliburton again thanks you for the opportunity to perform service work on this well. We hope to be your solutions provider for future projects.

Respectfully,

Halliburton Fort Lupton

The Road to Excellence Starts with Safety

Sold To #: 343492	Ship To #: 3917427	Quote #: 0022534231	Sales Order #: 0905415872
Customer: HIGHPOINT RESOURCES CORP-EBUS		Customer Rep:	
Well Name: WETCO	Well #: 4-63-05-4033CB	API/UWI #: 05-123-48495-00	
Field: WATTENBERG	City (SAP): KERSEY	County/Parish: WELD	State: COLORADO
Legal Description: NW SW-4-4N-63W-2244FSL-779FWL			
Contractor: CADE DRLG		Rig/Platform Name/Num: CADE 23	
Job BOM: 7523 7523			
Well Type: HORIZONTAL OIL			
Sales Person: HALAMERICA\H181357		Srvc Supervisor: Prince Perez	
Job			

Formation Depth (MD)	Top	0	Bottom	16381'
Job depth MD	16374ft		Job Depth TVD	6605'
			Wk Ht Above Floor	5'

Well Data

Description	New / Used	Size in	ID in	Weight lbm/ft	Thread	Grade	Top MD ft	Bottom MD ft	Top TVD ft	Bottom TVD ft
Casing		7	6.366	23			0	6903		6603
Casing		4.5	4	11.6			0	16374		6603
Open Hole Section			6.125				6903	16381	0	0

Tools and Accessories

Type	Size in	Qty	Make	Depth ft	Type	Size in	Qty	Make
Guide Shoe	4.5			16374	Top Plug	4.5	1	WF
Float Collar	4.5			16815'	Plug Container	4.5	1	HES
					Centralizers	4.5	210	Stigma

Fluid Data

Stage/Plug #: 1

Fluid #	Stage Type	Fluid Name	Qty	Qty UoM	Mixing Density lbm/gal	Yield ft3/sack	Mix Fluid Gal	Rate bbl/min	Total Mix Fluid Gal
1	Spacer	Tuned Spacer III	50	bbl	12	3.17	19.9	5	1763

Fluid #	Stage Type	Fluid Name	Qty	Qty UoM	Mixing Density lbm/gal	Yield ft3/sack	Mix Fluid Gal	Rate bbl/min	Total Mix Fluid Gal
2	Cement	NeoCem TM	465	sack	13.2	2.04	9.74	8	4529.1

Fluid #	Stage Type	Fluid Name	Qty	Qty UoM	Mixing Density lbm/gal	Yield ft ³ /sack	Mix Fluid Gal	Rate bbl/mi n	Total Mix Fluid Gal
3	Displacement fluid	Fresh Water	252.8	bbl	8.33				

Cement Left In Pipe	Amount	0ft	Reason	WET SHOE	
Mix Water:	pH 8	Mix Water Chloride:	<300 PPM	Mix Water Temperature:	50F
Cement Temperature:	51 °F	Plug Displaced by:	8.33PPG	Disp. Temperature:	50 °F
Plug Bumped?	Yes	Bump Pressure:	1,100 psi	Floats Held?	Yes
Cement Returns:	0 bbls	Returns Density:	9.1 lb/gal	Returns Temperature:	°F

Comment

Pumped 50 bbls of Tuned Spacer III with 10 gallons of D Air.
 Pumped 168.95 bbls of NeoCem.
 Pumped a 5 bbl wet shoe.
 Pumped 252.88 bbls of fresh water displacement with MMCR in the first 20 bbls and BE3, Oxygen, and Anhib throughout.
 Pumped a 1 bbl wet shoe.
 2 bbls back on the floats.

Summary Report

Sales Order #: 0905415872
WO #: 0905415872
PO #: NA
AFE #: 20328D

Crew: _____

Job Start Date: 01/20/2019 03:00 PM

Customer: HIGHPOINT RESOURCES CORP- EBUS	Field: WATTENBERG	Job Type: CMT PRODUCTION CASING BOM
UWI / API Number: 05-123-48495-00	County/Parish: WELD	Service Supervisor: Prince Perez
Well Name: WETCO	State: COLORADO	
Well No: 4-63-05-4033CB	Latitude: 40.339946	
	Longitude: -104.449667	Cust Rep Name:
	Sect / Twn / Rng: 4/4/63	Cust Rep Phone #:

Remarks:		
<i>The Information Stated Herein Is Correct</i>	Customer Representative Signature	Date
	Customer Representative Printed Name	

2.0 Real-Time Job Summary

2.1 Job Event Log

Type	Seq. No.	Activity	Graph Label	Date	Time	Source	DS Pump Press <i>(psi)</i>	DH Density <i>(ppg)</i>	Comb Pump Rate <i>(bbl/min)</i>	Pump Stg Tot <i>(bbl)</i>	Temperature <i>(°F)</i>	Comments
Event	1	Call Out	Call Out	1/27/2019	05:00:00	USER						The crew was called out on 1/27/19 at 0500. The customer requested HES on location at 1100 on 1/27/19.
Event	2	Depart from Service Center or Other Site	Depart from Service Center or Other Site	1/27/2019	10:00:00	USER						The crew held a pre journey safety meeting discussing the route and potential hazards while driving. The supervisor called in a journey. The crew departed service center.
Event	3	Assessment Of Location Safety Meeting	Assessment Of Location Safety Meeting	1/27/2019	11:00:00	USER						Crew discussed all potential hazards on location.
Event	4	Arrive at Location from Service Center	Arrive at Location from Service Center	1/27/2019	11:50:00	USER						The crew arrived on location safely. The rig was still running casing. The supervisor met with the Tool Hand and received numbers. TD 16,294', TP 16,283.3' 4 1/2" 11.6# P-110, ST 57.01', PC 6,871' 7" 23# J-55, TVD 6,520', OH 6 1/8", Mud 9 ppg.
Event	5	Pre-Rig Up Safety Meeting	Pre-Rig Up Safety Meeting	1/27/2019	14:50:00	USER						Crew held a safety meeting discussing the rig up procedure. Also all potential hazards associated with

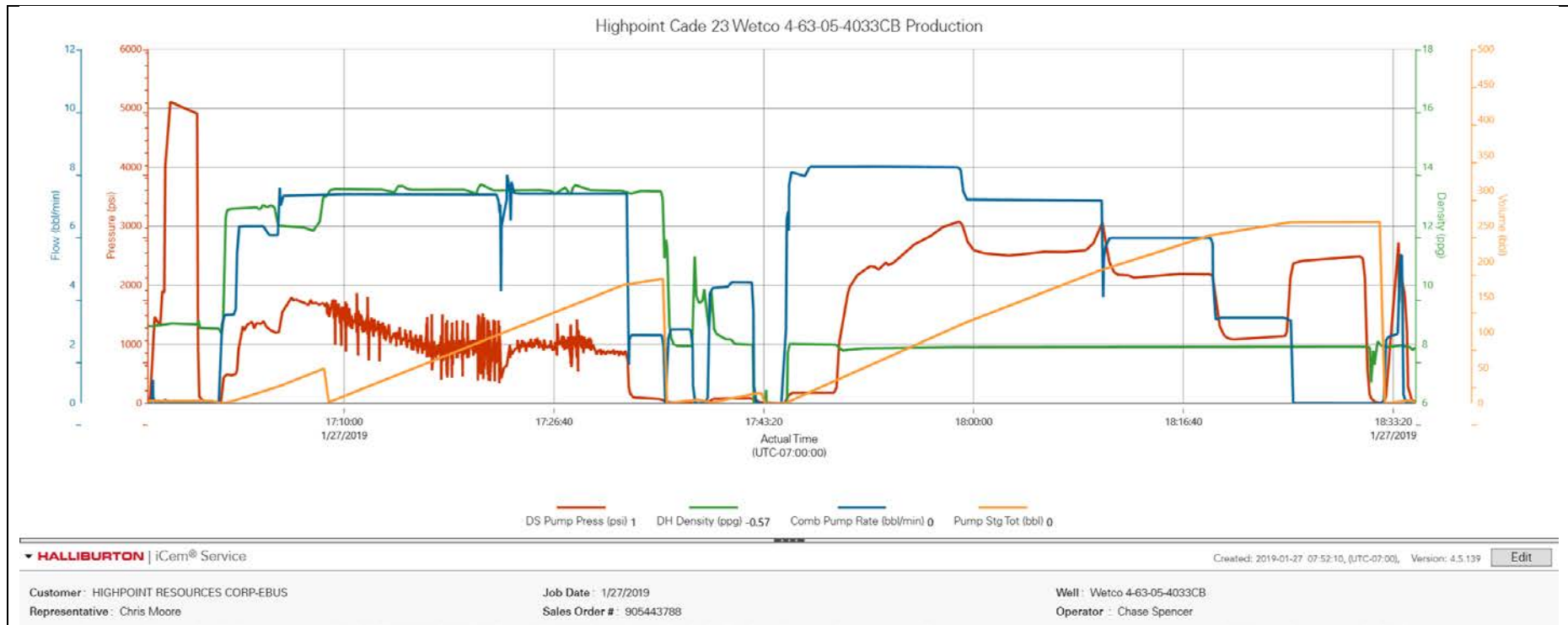
												rigging up all HES equipment and lines.
Event	6	Rig-Up Equipment	Rig-Up Equipment	1/27/2019	15:00:00	USER						The crew rigged up all HES equipment and lines.
Event	7	Rig-Up Completed	Rig-Up Completed	1/27/2019	15:30:00	USER	-47.00	8.40	0.00	0.00	93.00	Rig up completed, no one got hurt.
Event	8	Safety Meeting - Pre Job	Safety Meeting - Pre Job	1/27/2019	16:30:00	USER	-49.00	8.41	0.00	0.00	93.00	The crew and all personal involved with cement job discussed all potential hazards associated with job. Followed by the job procedure to ensure everyone understood the plan of action
Event	9	Start Job	Start Job	1/27/2019	16:51:28	COM1	-2.00	7.51	0.00	0.00	93.00	Started recording data from 11645460.
Event	10	Other	Fill Lines	1/27/2019	16:51:43	COM1	-2.00	8.19	0.00	0.00	93.00	We filled lines with 3 bbls of water at 3bpm, pressure was at 480 psi.
Event	11	Test Lines	Test Lines	1/27/2019	16:54:37	COM1	75.00	8.61	0.00	3.20	93.00	We pressure tested all HES lines to 5,000 psi. The pressure test passed.
Event	12	Pump Spacer 1	Pump Spacer 1	1/27/2019	16:59:48	COM1	10.00	8.53	0.00	3.20	93.00	We pumped 50 bbls of spacer at 7 bpm, pressure was at 1,200 psi. 12 ppg 3.17 yield 19.9 gal/sk. We verified density using pressurized scales.

Event	13	Pump Lead Cement	Pump Lead Cement	1/27/2019	17:08:35	COM1	1593.00	12.96	7.00	50.10	91.00	We pumped 169 bbls (465 sks) of cement at 7 bpm, pressure was at 900 psi. 13.2 ppg 2.04 yield 9.75 gal/sk. We verified density using pressurized scales.
Event	14	Shutdown	Shutdown	1/27/2019	17:37:44	COM1	8.00	8.06	0.10	5.10	91.00	Before we shutdown we pumped 5 bbls of fresh water. We shutdown to drop top plug.
Event	15	Clean Lines	Clean Lines	1/27/2019	17:38:47	COM1	-4.00	9.22	0.00	5.10	91.00	Washed pumps and lines.
Event	16	Drop Top Plug	Drop Top Plug	1/27/2019	17:43:12	COM1	14.00	4.66	0.00	14.40	91.00	Tool hand witnessed plug drop.
Event	17	Pump Displacement	Pump Displacement	1/27/2019	17:44:14	COM1	3.00	-0.56	0.00	0.00	91.00	We pumped the calculated displacement of 252 bbls. With MMCR,Oxygen, BE-3 and ANHIB II throughout displacement
Event	18	Bump Plug	Bump Plug	1/27/2019	18:25:45	COM1	2405.00	7.92	0.00	256.00	91.00	We bumped the plug. Final circulating pressure was 1,140 psi. We brought pressure up to 2,100 psi before shutting down. We held pressure on it for 5 mins.
Event	19	Other	Check Floats	1/27/2019	18:30:59	COM1	2375.00	7.91	0.00	256.00	91.00	We bled pressure off back to the truck. We got 2.5 bbls back. The floats held.

Event	20	Other	Wet Shoe	1/27/2019	18:34:50	COM1	46.00	7.71	0.00	4.20	91.00	We pressured up to 2,743 psi at 2 bpm. We sheered and pumped a 1 bbl wet shoe at 5 bpm. We checked floats again, the floats held.
Event	21	End Job	End Job	1/27/2019	18:35:01	COM1	19.00	7.74	0.00	0.00	91.00	Cement job complete. Estimated top of Cement 6,313'. Estimated top of Spacer 3,775'.
Event	22	Pre-Rig Down Safety Meeting	Pre-Rig Down Safety Meeting	1/27/2019	18:40:00	USER	150.00	7.87	6.30	28.20	89.00	Crew held a safety meeting discussing the rig down procedure. Also all potential hazards associated with rigging down all HES equipment and lines.
Event	23	Rig-Down Equipment	Rig-Down Equipment	1/27/2019	18:50:00	USER						The crew rigged down all HES equipment and lines.
Event	24	Rig-Down Completed	Rig-Down Completed	1/27/2019	19:10:00	USER						Rig down completed no one got hurt.
Event	25	Pre-Convoy Safety Meeting	Pre-Convoy Safety Meeting	1/27/2019	19:45:00	USER						The crew held a pre journey safety meeting discussing the route and potential hazards while driving The supervisor called in a journey.
Event	26	Depart Location for Service Center or Other Site	Depart Location for Service Center or Other Site	1/27/2019	19:50:00	USER						Nick Cummins and crew would like to thank you for your business, and choosing Halliburton Cement! Please feel free to call if you have any questions.

3.0 Attachments

3.1 Cement Job Without Events.png



3.2 Cement Job With Events.png

