



# SRC Energy

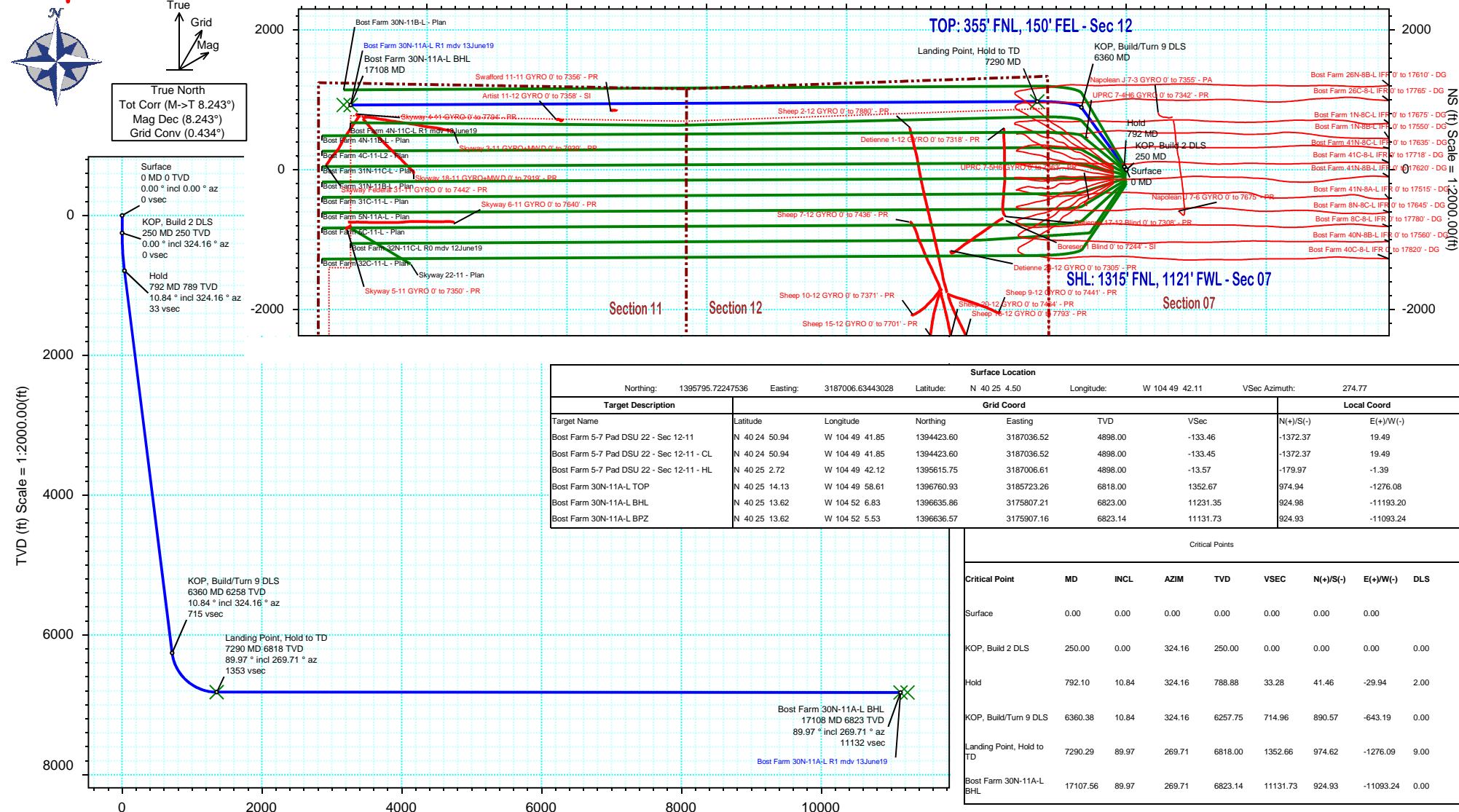
# Schlumberger

## Rev 1

Borehole:	Well:	Field:	Structure:
Original Hole	Bost Farm 30N-11A-L	CO, Weld County (NAD 83 NZ) - SRC	SRC Energy 07-05N-66W (Bost Farm 5-7 Pad DSU 22)

Gravity & Magnetic Parameters					Surface Location					NAD83 Colorado State Plane, Northern Zone, US Feet					Miscellaneous			
Model:	HDGM 2019	Dip:	66.775°	Date:	13-Jun-2019	Lat:	N 40 25 4.50	Northing:	1395795.72ftUS	Grid Conv:	0.434°	Slot:	Bost Farm 30N-11A-L	TVD Ref:	KB 20ft(4898ft above MSL)			
MagDec:	8.243°	FS:	52212.866nT	Gravity FS:	999.025mgn (9.80665 Based)	Lon:	W 104 49 42.11	Easting:	3187006.63ftUS	Scale Fact:	0.99996109	Plan:	Bost Farm 30N-11A-L R1 mdy 13June19					

## Proposal

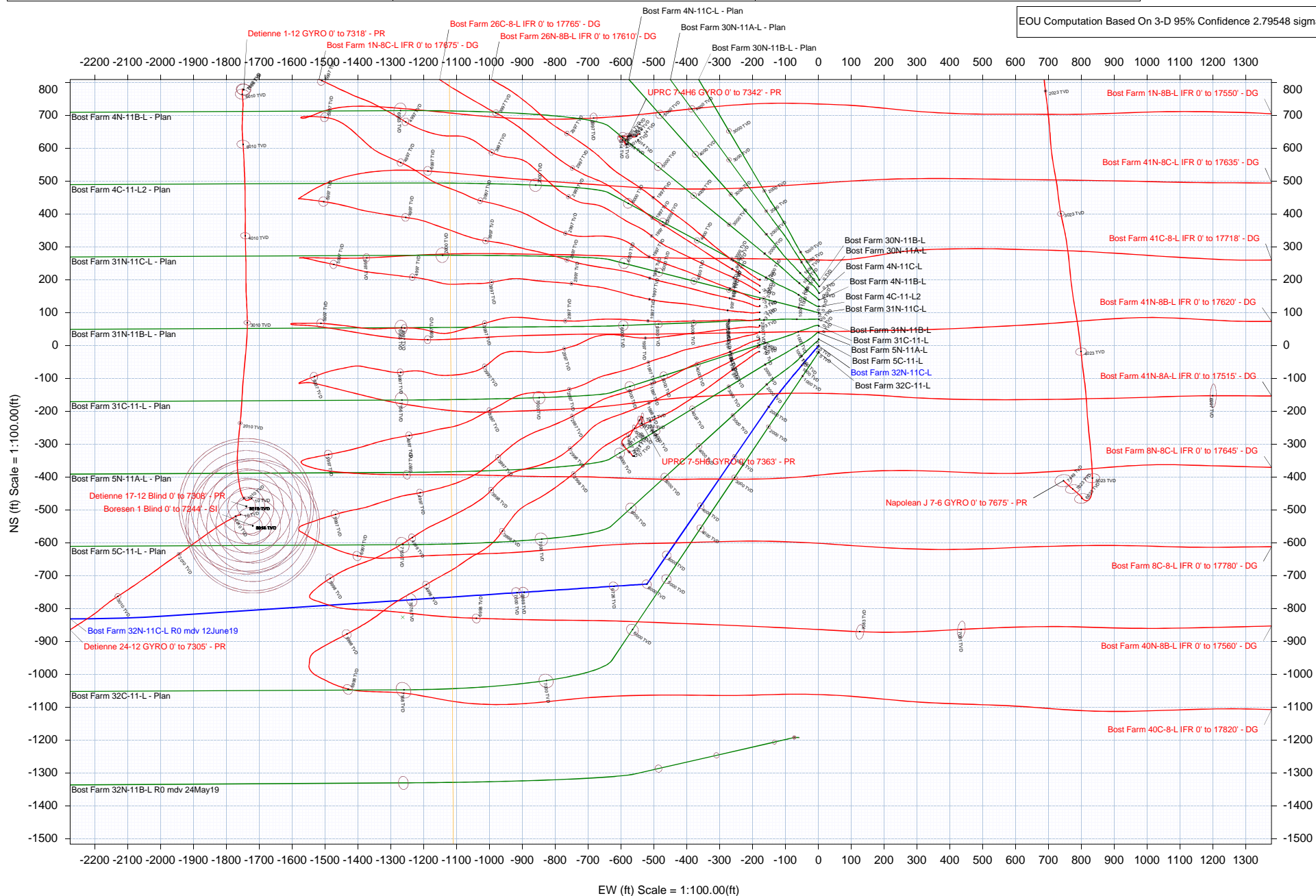




True North  
Tot Corr (M->T 8.243°)  
Mag Dec (8.243°)  
Grid Conv (0.434°)

Borehole:		Well:		Field:		Structure:	
Original Hole		Bost Farm 32N-11C-L		CO, Weld County (NAD 83 NZ) - SRC		SRC Energy 07-05N-66W (Bost Farm 5-7 Pad DSU 22)	
Gravity & Magnetic Parameters				Surface Location		Miscellaneous	
Model:	HDMG 2019	Dip:	66.775°	Date:	12-Jun-2019	Lat:	N 40 25 2.72
MagDec:	8.243°	FS:	52212.964nT	Gravity FS:	999.025mgn (9.80665 Based)	North:	1395615.75ftUS
						Grid Conv:	0.434°
						Lon:	W 104 49 42.12
						Easting:	3187006.61ftUS
						Scale Fact:	0.99996107
						Slot:	Bost Farm 32N-11C-L
						TVD Ref:	KB 20ft(4898ft above MSL)
						Plan:	Bost Farm 32N-11C-L R0 mvd 12/June19

EOU Computation Based On 3-D 95% Confidence 2.79548 sigma

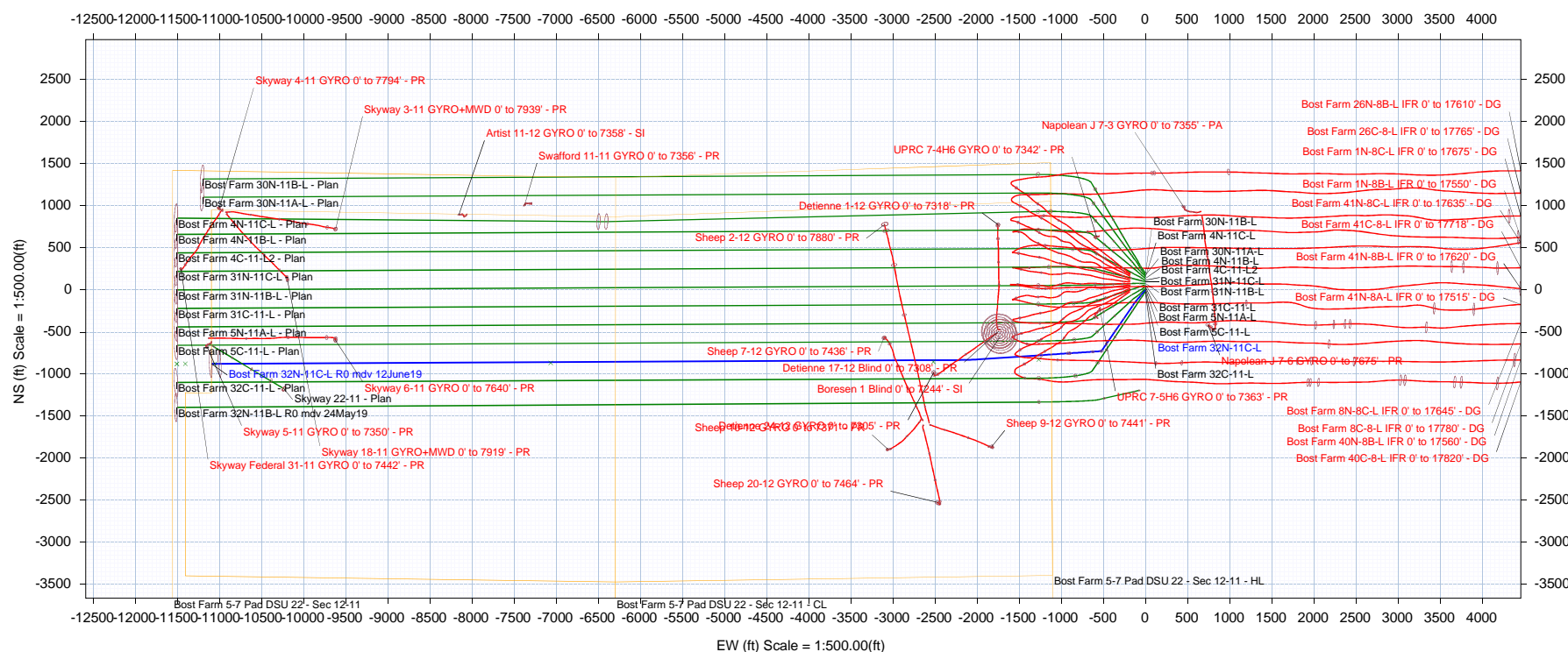




True North  
Tot Corr (M->T 8.243°)  
Mag Dec (8.243°)  
Grid Conv (0.434°)

<b>Borehole:</b>		<b>Well:</b>		<b>Field:</b>		<b>Structure:</b>	
Original Hole		Bost Farm 32N-11C-L		CO, Weld County (NAD 83 NZ) - SRC		SRC Energy 07-05N-66W (Bost Farm 5-7 Pad DSU 22)	
<b>Gravity &amp; Magnetic Parameters</b>				<b>Surface Location</b>		<b>Miscellaneous</b>	
Model:	HDGM 2019	Dip:	66.775°	Date:	12-Jun-2019	Slot:	Bost Farm 32N-11C-L
MagDec:	8.243°	FS:	52212.964mT	Gravity FS:	999.025mm (9.80665 Based)	Lat:	N 40 25 2.72
						Long:	W 104 49 42.12
						Easting:	3187006.611HUS
						Scale Factor:	0.99996107
						TV D Ref:	KB 20ft(4989ft above MSL)
							12-Jun-19

EOU Computation Based On 3-D 95% Confidence 2.79548 sigma



## Bost Farm 30N-11A-L R1 mdv 13June19 Proposal Geodetic Report

(Def Plan)

**Report Date:** June 13, 2019 - 08:42 AM  
**Client:** SRC Energy  
**Field:** CO, Weld County (NAD 83 NZ) - SRC  
**Structure / Slot:** SRC Energy 07-05N-66W (Bost Farm 5-7 Pad DSU 22) / Bost Farm 30N-11A-L  
**Well:** Bost Farm 30N-11A-L  
**Borehole:** Original Hole  
**UWI / API#:** Unknown / 05-123-47659  
**Survey Name:** Bost Farm 30N-11A-L R1 mdv 13June19  
**Survey Date:** May 20, 2019  
**Tort / AHD / DDI / ERD Ratio:** 94.534 ° / 11561.488 ft / 6.438 / 1.694  
**Coordinate Reference System:** NAD83 Colorado State Plane, Northern Zone, US Feet  
**Location Lat / Long:** N 40° 25' 4.50120", W 104° 49' 42.10680"  
**Location Grid N/E Y/X:** N 1395795.722 ftUS, E 3187006.634 ftUS  
**CRS Grid Convergence Angle:** 0.4340 °  
**Grid Scale Factor:** 0.99996109  
**Version / Patch:** 2.10.760.0

**Survey / DLS Computation:** Minimum Curvature / Lubinski  
**Vertical Section Azimuth:** 274.766 ° (True North)  
**Vertical Section Origin:** 0.000 ft, 0.000 ft  
**TVD Reference Datum:** KB 20ft  
**TVD Reference Elevation:** 4898.000 ft above MSL  
**Seabed / Ground Elevation:** 4878.000 ft above MSL  
**Magnetic Declination:** 8.243 °  
**Total Gravity Field Strength:** 999.0247mgn (9.80665 Based)  
**Gravity Model:** GARM  
**Total Magnetic Field Strength:** 52212.866 nT  
**Magnetic Dip Angle:** 66.775 °  
**Declination Date:** June 13, 2019  
**Magnetic Declination Model:** HDGM 2019  
**North Reference:** True North  
**Grid Convergence Used:** 0.0000 °  
**Total Corr Mag North→True North:** 8.2427 °  
**Local Coord Referenced To:** Well Head

Comments	MD (ft)	Incl (°)	Azim True (°)	TVD (ft)	VSEC (ft)	NS (ft)	EW (ft)	DLS (°/100ft)	Northing (ftUS)	Easting (ftUS)	Latitude (°)	Longitude (°)
Surface	0.00	0.00	0.00	0.00	0.00	0.00	0.00	N/A	1395795.72	3187006.63	40.417917	-104.828363
	100.00	0.00	324.16	100.00	0.00	0.00	0.00	0.00	1395795.72	3187006.63	40.417917	-104.828363
	200.00	0.00	324.16	200.00	0.00	0.00	0.00	0.00	1395795.72	3187006.63	40.417917	-104.828363
KOP, Build 2 DLS	250.00	0.00	324.16	250.00	0.00	0.00	0.00	0.00	1395795.72	3187006.63	40.417917	-104.828363
Hold	300.00	1.00	324.16	300.00	0.28	0.35	-0.26	2.00	1395796.07	3187006.38	40.417918	-104.828364
	400.00	3.00	324.16	399.93	2.56	3.18	-2.30	2.00	1395798.89	3187004.31	40.417926	-104.828371
	500.00	5.00	324.16	499.68	7.09	8.84	-6.38	2.00	1395804.51	3187000.19	40.417941	-104.828386
	600.00	7.00	324.16	599.13	13.90	17.31	-12.50	2.00	1395812.94	3186994.00	40.417965	-104.828408
	700.00	9.00	324.16	698.15	22.95	28.59	-20.65	2.00	1395824.16	3186985.77	40.417995	-104.828437
	792.10	10.84	324.16	788.88	33.28	41.46	-29.94	2.00	1395836.95	3186976.38	40.418031	-104.828471
	800.00	10.84	324.16	796.63	34.25	42.66	-30.81	0.00	1395838.15	3186975.50	40.418034	-104.828474
	900.00	10.84	324.16	894.84	46.49	57.91	-41.82	0.00	1395853.31	3186964.37	40.418076	-104.828513
	1000.00	10.84	324.16	993.06	58.73	73.16	-52.84	0.00	1395868.48	3186953.25	40.418118	-104.828553
	1100.00	10.84	324.16	1091.27	70.98	88.41	-63.85	0.00	1395883.64	3186942.12	40.418160	-104.828592
	1200.00	10.84	324.16	1189.49	83.22	103.66	-74.86	0.00	1395898.81	3186930.99	40.418202	-104.828632
	1300.00	10.84	324.16	1287.70	95.46	118.91	-85.88	0.00	1395913.97	3186919.86	40.418243	-104.828671
	1400.00	10.84	324.16	1385.92	107.70	134.16	-96.89	0.00	1395929.13	3186908.74	40.418285	-104.828711
	1500.00	10.84	324.16	1484.13	119.94	149.40	-107.90	0.00	1395944.30	3186897.61	40.418327	-104.828751
	1600.00	10.84	324.16	1582.35	132.19	164.65	-118.92	0.00	1395959.46	3186886.48	40.418369	-104.828790
	1700.00	10.84	324.16	1680.56	144.43	179.90	-129.93	0.00	1395974.63	3186875.35	40.418411	-104.828830
	1800.00	10.84	324.16	1778.78	156.67	195.15	-140.94	0.00	1395989.79	3186864.22	40.418453	-104.828869
	1900.00	10.84	324.16	1876.99	168.91	210.40	-151.96	0.00	1396004.96	3186853.10	40.418495	-104.828909
	2000.00	10.84	324.16	1975.21	181.16	225.65	-162.97	0.00	1396020.12	3186841.97	40.418536	-104.828948
	2100.00	10.84	324.16	2073.42	193.40	240.90	-173.98	0.00	1396035.29	3186830.84	40.418578	-104.828988
	2200.00	10.84	324.16	2171.64	205.64	256.15	-185.00	0.00	1396050.45	3186819.71	40.418620	-104.829027
	2300.00	10.84	324.16	2269.85	217.88	271.40	-196.01	0.00	1396065.62	3186808.58	40.418662	-104.829067
	2400.00	10.84	324.16	2368.07	230.12	286.65	-207.02	0.00	1396080.78	3186797.46	40.418704	-104.829106
	2500.00	10.84	324.16	2466.28	242.37	301.90	-218.04	0.00	1396095.95	3186786.33	40.418746	-104.829146
	2600.00	10.84	324.16	2564.50	254.61	317.14	-229.05	0.00	1396111.11	3186775.20	40.418788	-104.829186
	2700.00	10.84	324.16	2662.71	266.85	332.39	-240.06	0.00	1396126.28	3186764.07	40.418829	-104.829225
	2800.00	10.84	324.16	2760.93	279.09	347.64	-251.08	0.00	1396141.44	3186752.94	40.418871	-104.829265
	2900.00	10.84	324.16	2859.14	291.34	362.89	-262.09	0.00	1396156.60	3186741.82	40.418913	-104.829304
	3000.00	10.84	324.16	2957.36	303.58	378.14	-273.10	0.00	1396171.77	3186730.69	40.418955	-104.829344
	3100.00	10.84	324.16	3055.57	315.82	393.39	-284.12	0.00	1396186.93	3186719.56	40.418997	-104.829383
	3200.00	10.84	324.16	3153.79	328.06	408.64	-295.13	0.00	1396202.10	3186708.43	40.419039	-104.829423
	3300.00	10.84	324.16	3252.00	340.30	423.89	-306.14	0.00	1396217.26	3186697.30	40.419081	-104.829462
	3400.00	10.84	324.16	3350.22	352.55	439.14	-317.15	0.00	1396232.43	3186686.18	40.419122	-104.829502
	3500.00	10.84	324.16	3448.43	364.79	454.39	-328.17	0.00	1396247.59	3186675.05	40.419164	-104.829542
	3600.00	10.84	324.16	3546.65	377.03	469.64	-339.18	0.00	1396262.76	3186663.92	40.419206	-104.829581
	3700.00	10.84	324.16	3644.86	389.27	484.89	-350.19	0.00	1396277.92	3186652.79	40.419248	-104.829621
	3800.00	10.84	324.16	3743.08	401.51	500.13	-361.21	0.00	1396293.09	3186641.66	40.419290	-104.829660
	3900.00	10.84	324.16	3841.29	413.76	515.38	-372.22	0.00	1396308.25	3186630.54	40.419332	-104.829700
	4000.00	10.84	324.16	3939.51	426.00	530.63	-383.23	0.00	1396323.42	3186619.41	40.419374	-104.829739
	4100.00	10.84	324.16	4037.72	438.24	545.88	-394.25	0.00	1396338.58	3186608.28	40.419415	-104.829779
	4200.00	10.84	324.16	4135.94	450.48	561.13	-405.26	0.00	1396353.74	3186597.15	40.419457	-104.829818
	4300.00	10.84	324.16	4234.15	462.73	576.38	-416.27	0.00	1396368.91	3186586.02	40.419499	-104.829858
	4400.00	10.84	324.16	4332.37	474.97	591.63	-427.29	0.00	1396384.07	3186574.90	40.419541	-104.829898
	4500.00	10.84	324.16	4430.58	487.21	606.88	-438.30	0.00	1396399.24	3186563.77	40.419583	-104.829937
	4600.00	10.84	324.16	4528.80	499.45	622.13	-449.31	0.00	1396414.40	3186552.64	40.419625	-104.829977
4700.00	10.84	324.16	4627.01	511.69	637.38	-460.33	0.00	1396429.57	3186541.51	40.419667	-104.830016	
4800.00	10.84	324.16	4725.23	523.94	652.63	-471.34	0.00	1396444.73	3186530.38	40.419708	-104.830056	
4900.00	10.84	324.16	4823.44	536.18	667.87	-482.35	0.00	1396459.90	3186519.26	40.419750	-104.830095	
5000.00	10.84	324.16	4921.66	548.42	683.12	-493.37	0.00	1396475.06	3186508.13	40.419792	-104.830135	
5100.00	10.84	324.16	5019.87	560.66	698.37	-504.38	0.00	1396490.23	3186497.00	40.419834	-104.830174	
5200.00	10.84	324.16	5118.09	572.91	713.62	-515.39	0.00	1396505.39	3186485.87	40.419876	-104.830214	
5300.00	10.84	324.16	5216.30	585.15	728.87	-526.41	0.00	1396520.56	3186474.74	40.419918	-104.830254	
5400.00	10.84	324.16	5314.52	597.39	744.12	-537.42	0.00	1396535.72	3186463.62	40.419960	-104.830293	
5500.00	10.84	324.16	5412.73	609.63	759.37	-548.43	0.00	1396550.89	3186452.49	40.420001	-104.830333	
5600.00	10.84	324.16	5510.95	621.87	774.62	-559.45	0.00	1396566.05	3186441.36	40.420043	-104.830372	
5700.00	10.84	324.16	5609.16	634.12	789.87	-570.46	0.00	1396581.21	3186430.23	40.420085	-104.830412	
5800.00	10.84	324.16	5707.38	646.36	805.12	-581.47	0.00	1396596.38	3186419.10	40.420127	-104.830451	
5900.00	10.84	324.16	5805.59	658.60	820.37	-592.49	0.00	1396611.54	3186407.98	40.420169	-104.830491	
6000.00	10.84	324.16	5903.81	670.84	835.61	-603.50	0.00	1396626.71	3186396.85	40.420211	-104.830530	
6100.00	10.84	324.16	6002.02	683.09	850.86	-614.51	0.00	1396641.87	3186385.72	40.420253	-104.830570	
6200.00	10.84	324.16	6100.24	695.33	866.11	-625.53	0.00	1396657.04	3186374.59	40.420294	-104.830610	
6300.00	10.84	324.16	6198.45	707.57	881.36	-636.54	0.00	1396672.20	3186363.46	40.420336	-104.830649	
KOP, Build/Turn 9 DLS	6360.38	10.84	324.16	6257.75	714.96	890.57	-643.19	0.00	1396681.36	3186356.75	40.420361	-104.830673
	6400.00	13.21	311.29	6296.51	721.03	896.58	-648.77	9.00	1396687.33	3186351.11	40.420378	-104.830693
	6500.00	20.75	293.99	6392.14	746.99	911.36	-673.60	9.00	1396701.91	3186326.18	40.420419	-104.830782
	6600.00	29.11	285.96	6482.76	787.67	925.27	-713.25	9.00	1396715.53	3186286.42	40.420457	-104.830925
	6700.00	37.75	281.32	6566.16	842.05	938.00	-766.76	9.00	1396727.85	3186232.82	40.420492	-104.831117
	6800.00	46.50	278.21	6640.26	908.80	949.20	-832.81	9.00	1396738.55	3186166.69	40.420522	-104.831354
	6900.00	55.32	275.89	6703.25	986.28	958.62	-909.77	9.00	1396747.39	3186089.67	40.420548	-104.831630
	7000.00	64.18	274.03	6753.58	1072.57	966.03	-995.74	9.00	1396754.14	3186003.64	40.420569	-104.831939
	7100.00	73.05	272.43	6790.01	1165.55	971.23	-1088.62	9.00	1396758.64	3185910.74	40.420583	-104.832273

Comments	MD (ft)	Incl (°)	Azim True (°)	TVD (ft)	VSEC (ft)	NS (ft)	EW (ft)	DLS (°/100ft)	Northing (ftUS)	Easting (ftUS)	Latitude (°)	Longitude (°)
Landing Point, Hold to TD	7200.00	81.94	270.97	6811.64	1262.94	974.09	-1186.10	9.00	1396760.77	3185813.24	40.420591	-104.832623
	7290.29	89.97	269.71	6818.00	1352.66	974.62	-1276.09	9.00	1396760.61	3185723.25	40.420592	-104.832946
	7300.00	89.97	269.71	6818.00	1362.33	974.57	-1285.80	0.00	1396760.49	3185713.54	40.420592	-104.832981
	7400.00	89.97	269.71	6818.06	1461.94	974.07	-1385.80	0.00	1396759.23	3185613.55	40.420591	-104.833340
	7500.00	89.97	269.71	6818.11	1561.55	973.56	-1485.80	0.00	1396757.96	3185513.56	40.420589	-104.833699
	7600.00	89.97	269.71	6818.16	1661.17	973.06	-1585.80	0.00	1396756.70	3185413.58	40.420588	-104.834058
	7700.00	89.97	269.71	6818.21	1760.78	972.55	-1685.80	0.00	1396755.44	3185313.59	40.420586	-104.834417
	7800.00	89.97	269.71	6818.27	1860.39	972.04	-1785.80	0.00	1396754.17	3185213.60	40.420585	-104.834777
	7900.00	89.97	269.71	6818.32	1960.00	971.54	-1885.79	0.00	1396752.91	3185113.61	40.420584	-104.835136
	8000.00	89.97	269.71	6818.37	2059.61	971.03	-1985.79	0.00	1396751.65	3185013.63	40.420582	-104.835495
	8100.00	89.97	269.71	6818.42	2159.22	970.52	-2085.79	0.00	1396750.38	3184913.64	40.420581	-104.835854
	8200.00	89.97	269.71	6818.48	2258.83	970.02	-2185.79	0.00	1396749.12	3184813.65	40.420579	-104.836213
	8300.00	89.97	269.71	6818.53	2358.44	969.51	-2285.79	0.00	1396747.86	3184713.66	40.420578	-104.836572
	8400.00	89.97	269.71	6818.58	2458.05	969.01	-2385.79	0.00	1396746.59	3184613.67	40.420576	-104.836931
	8500.00	89.97	269.71	6818.63	2557.66	968.50	-2485.79	0.00	1396745.33	3184513.69	40.420575	-104.837291
	8600.00	89.97	269.71	6818.69	2657.27	967.99	-2585.79	0.00	1396744.06	3184413.70	40.420574	-104.837650
	8700.00	89.97	269.71	6818.74	2756.89	967.49	-2685.78	0.00	1396742.80	3184313.71	40.420572	-104.838009
	8800.00	89.97	269.71	6818.79	2856.50	966.98	-2785.78	0.00	1396741.54	3184213.72	40.420571	-104.838368
	8900.00	89.97	269.71	6818.84	2956.11	966.48	-2885.78	0.00	1396740.27	3184113.73	40.420569	-104.838727
	9000.00	89.97	269.71	6818.89	3055.72	965.97	-2985.78	0.00	1396739.01	3184013.75	40.420568	-104.839086
	9100.00	89.97	269.71	6818.95	3155.33	965.46	-3085.78	0.00	1396737.75	3183913.76	40.420567	-104.839445
	9200.00	89.97	269.71	6819.00	3254.94	964.96	-3185.78	0.00	1396736.48	3183813.77	40.420565	-104.839805
	9300.00	89.97	269.71	6819.05	3354.55	964.45	-3285.78	0.00	1396735.22	3183713.78	40.420564	-104.840164
	9400.00	89.97	269.71	6819.10	3454.16	963.94	-3385.78	0.00	1396733.96	3183613.79	40.420562	-104.840523
	9500.00	89.97	269.71	6819.16	3553.77	963.44	-3485.77	0.00	1396732.69	3183513.81	40.420561	-104.840882
	9600.00	89.97	269.71	6819.21	3653.38	962.93	-3585.77	0.00	1396731.43	3183413.82	40.420559	-104.841241
	9700.00	89.97	269.71	6819.26	3752.99	962.43	-3685.77	0.00	1396730.17	3183313.83	40.420558	-104.841600
	9800.00	89.97	269.71	6819.31	3852.60	961.92	-3785.77	0.00	1396728.90	3183213.84	40.420557	-104.841959
	9900.00	89.97	269.71	6819.37	3952.22	961.41	-3885.77	0.00	1396727.64	3183113.85	40.420555	-104.842319
	10000.00	89.97	269.71	6819.42	4051.83	960.91	-3985.77	0.00	1396726.38	3183013.87	40.420554	-104.842678
	10100.00	89.97	269.71	6819.47	4151.44	960.40	-4085.77	0.00	1396725.11	3182913.88	40.420552	-104.843037
	10200.00	89.97	269.71	6819.52	4251.05	959.90	-4185.76	0.00	1396723.85	3182813.89	40.420551	-104.843396
	10300.00	89.97	269.71	6819.58	4350.66	959.39	-4285.76	0.00	1396722.59	3182713.90	40.420549	-104.843755
	10400.00	89.97	269.71	6819.63	4450.27	958.88	-4385.76	0.00	1396721.32	3182613.92	40.420548	-104.844114
	10500.00	89.97	269.71	6819.68	4549.88	958.38	-4485.76	0.00	1396720.06	3182513.93	40.420547	-104.844473
	10600.00	89.97	269.71	6819.73	4649.49	957.87	-4585.76	0.00	1396718.80	3182413.94	40.420545	-104.844833
	10700.00	89.97	269.71	6819.79	4749.10	957.36	-4685.76	0.00	1396717.53	3182313.95	40.420544	-104.845192
	10800.00	89.97	269.71	6819.84	4848.71	956.86	-4785.76	0.00	1396716.27	3182213.96	40.420542	-104.845551
	10900.00	89.97	269.71	6819.89	4948.32	956.35	-4885.76	0.00	1396715.00	3182113.98	40.420541	-104.845910
	11000.00	89.97	269.71	6819.94	5047.94	955.85	-4985.75	0.00	1396713.74	3182013.99	40.420539	-104.846269
	11100.00	89.97	269.71	6819.99	5147.55	955.34	-5085.75	0.00	1396712.48	3181914.00	40.420538	-104.846628
	11200.00	89.97	269.71	6820.05	5247.16	954.83	-5185.75	0.00	1396711.21	3181814.01	40.420536	-104.846987
	11300.00	89.97	269.71	6820.10	5346.77	954.33	-5285.75	0.00	1396709.95	3181714.02	40.420535	-104.847347
	11400.00	89.97	269.71	6820.15	5446.38	953.82	-5385.75	0.00	1396708.69	3181614.04	40.420534	-104.847706
	11500.00	89.97	269.71	6820.20	5545.99	953.32	-5485.75	0.00	1396707.42	3181514.05	40.420532	-104.848065
	11600.00	89.97	269.71	6820.26	5645.60	952.81	-5585.75	0.00	1396706.16	3181414.06	40.420531	-104.848424
	11700.00	89.97	269.71	6820.31	5745.21	952.30	-5685.75	0.00	1396704.90	3181314.07	40.420529	-104.848783
	11800.00	89.97	269.71	6820.36	5844.82	951.80	-5785.74	0.00	1396703.63	3181214.08	40.420528	-104.849142
	11900.00	89.97	269.71	6820.41	5944.43	951.29	-5885.74	0.00	1396702.37	3181114.10	40.420526	-104.849501
	12000.00	89.97	269.71	6820.47	6044.04	950.79	-5985.74	0.00	1396701.11	3181014.11	40.420525	-104.849861
	12100.00	89.97	269.71	6820.52	6143.65	950.28	-6085.74	0.00	1396699.84	3180914.12	40.420523	-104.850220
	12200.00	89.97	269.71	6820.57	6243.27	949.77	-6185.74	0.00	1396698.58	3180814.13	40.420522	-104.850579
	12300.00	89.97	269.71	6820.62	6342.88	949.27	-6285.74	0.00	1396697.32	3180714.14	40.420520	-104.850938
	12400.00	89.97	269.71	6820.68	6442.49	948.76	-6385.74	0.00	1396696.06	3180614.16	40.420519	-104.851297
	12500.00	89.97	269.71	6820.73	6542.10	948.25	-6485.73	0.00	1396694.79	3180514.17	40.420518	-104.851656
	12600.00	89.97	269.71	6820.78	6641.71	947.75	-6585.73	0.00	1396693.53	3180414.18	40.420516	-104.852015
	12700.00	89.97	269.71	6820.83	6741.32	947.24	-6685.73	0.00	1396692.26	3180314.19	40.420515	-104.852375
	12800.00	89.97	269.71	6820.88	6840.93	946.74	-6785.73	0.00	1396691.00	3180214.21	40.420513	-104.852734
	12900.00	89.97	269.71	6820.94	6940.54	946.23	-6885.73	0.00	1396689.74	3180114.22	40.420512	-104.853093
	13000.00	89.97	269.71	6820.99	7040.15	945.72	-6985.73	0.00	1396688.47	3180014.23	40.420510	-104.853452
	13100.00	89.97	269.71	6821.04	7139.76	945.22	-7085.73	0.00	1396687.21	3179914.24	40.420509	-104.853811
	13200.00	89.97	269.71	6821.09	7239.37	944.71	-7185.73	0.00	1396685.94	3179814.25	40.420507	-104.854170
	13300.00	89.97	269.71	6821.15	7338.98	944.21	-7285.72	0.00	1396684.68	3179714.27	40.420506	-104.854529
	13400.00	89.97	269.71	6821.20	7438.60	943.70	-7385.72	0.00	1396683.42	3179614.28	40.420504	-104.854888
	13500.00	89.97	269.71	6821.25	7538.21	943.19	-7485.72	0.00	1396682.15	3179514.29	40.420503	-104.855248
	13600.00	89.97	269.71	6821.30	7637.82	942.69	-7585.72	0.00	1396680.89	3179414.30	40.420501	-104.855607
	13700.00	89.97	269.71	6821.36	7737.43	942.18	-7685.72	0.00	1396679.63	3179314.31	40.420500	-104.855966
	13800.00	89.97	269.71	6821.41	7837.04	941.67	-7785.72	0.00	1396678.36	3179214.33	40.420498	-104.856325
	13900.00	89.97	269.71	6821.46	7936.65	941.17	-7885.72	0.00	1396677.10	3179114.34	40.420497	-104.856684
	14000.00	89.97	269.71	6821.51	8036.26	940.66	-7985.72	0.00	1396675.84	3179014.35	40.420495	-104.857043
	14100.00	89.97	269.71	6821.57	8135.87	940.16	-8085.71	0.00	1396674.57	3178914.36	40.420494	-104.857403
	14200.00	89.97	269.71	6821.62	8235.48	939.65	-8185.71	0.00	1396673.31	3178814.37	40.420493	-104.857762
	14300.00	89.97	269.71	6821.67	8335.09	939.14	-8285.71	0.00	1396672.05	3178714.39	40.420491	-104.858121
	14400.00	89.97	269.71	6821.72	8434.70	938.64	-8385.71	0.00	1396670.78	3178614.40	40.420490	-104.858480
	14500.00	89.97	269.71	6821.77	8534.32	938.13	-8485.71	0.00	1396669.52	3178514.41	40.420488	-104.858839
	14600.00	89.97	269.71	6821.83	8633.93	937.63	-8585.71	0.00	1396668.26	3178414.42	40.420487	-104.859198
	14700.00	89.97	269.71	6821.88	8733.54	937.12	-8685.71	0.00	1396666.99	3178314.43	40.	

Comments	MD (ft)	Incl (°)	Azim True (°)	TVD (ft)	VSEC (ft)	NS (ft)	EW (ft)	DLS (°/100ft)	Northing (ftUS)	Easting (ftUS)	Latitude (°)	Longitude (°)
Survey Error Model:	ISCWSA Rev 0 *** 3-D 95.000% Confidence 2.7955 sigma											
Survey Program:												
Description	Part	MD From (ft)	MD To (ft)	EOU Freq (ft)	Hole Size	Casing Diameter (in)	Expected Max Inclination (deg)	Survey Tool Type	Borehole / Survey			
	1	0.000	20.000	1/100.000	13.500	9.625		NAL_MWD_IFR1-Depth Only	Original Hole / Bost Farm 30N-11A-L R1 mdv 13June19			
	1	20.000	1800.000	1/100.000	13.500	9.625		NAL_MWD_IFR1	Original Hole / Bost Farm 30N-11A-L R1 mdv 13June19			
	1	1800.000	17107.562	1/100.000	8.500	5.500		NAL_MWD_IFR1+MS	Original Hole / Bost Farm 30N-11A-L R1 mdv 13June19			

## Bost Farm 30N-11A-L R1 mdv 13June19 Anti-Collision Summary Report

**Analysis Date-24hr Time:** June 13, 2019 - 08:42  
**Client:** SRC Energy  
**Field:** CO, Weld County (NAD 83 NZ) - SRC

**Analysis Method:** 3D Least Distance  
**Reference Trajectory:** Bost Farm 30N-11A-L R1 mdv 13June19 (Def Plan)  
**Depth Interval:** Every 10.00 Measured Depth (ft)

**Structure:** SRC Energy 07-05N-66W (Bost Farm 5-7 Pad DSU 22)  
**Slot:** Bost Farm 30N-11A-L  
**Well:** Bost Farm 30N-11A-L  
**Borehole:** Original Hole  
**Scan MD Range:** 0.00ft - 17107.56ft

**Rule Set:** D&M AntiCollision Standard S002 v5.1/5.2  
**Min Pts:** All local minima indicated.  
**Version / Patch:** 2.10.760.0  
**Database \ Project:** us1164app01\drilling-CO, Weld County 2.10

**Trajectory Error Model:** ISCWSA0 3-D 95.000% Confidence 2.7955 sigma, for subject well. For offset wells, error model version is specified with each well respectively.

### Offset Trajectories Summary

#### Offset Selection Criteria

Wellhead distance scan: Restricted within 58118.06 ft  
 Selection filters: Definitive Surveys - Definitive Plans - Definitive surveys exclude definitive plans  
 - All Non-Def Surveys when no Def-Survey is set in a borehole - All Non-Def Plans when no Def-Plan is set in a borehole

Offset Trajectory	Separation			Allow Dev. (ft)	Sep. Fact.	Controlling Rule	Reference Trajectory		Risk Level			Alert	Status
	Ct-Ct (ft)	MAS (ft)	EOU (ft)				MD (ft)	TVD (ft)	Alert	Minor	Major		

Results highlighted: Sep-Factor separation <= 1.50 ft

#### Bost Farm 26C-8-L IFR 0' to 17765' - DG (Def Survey)

179.88	32.81	178.90	147.07	N/A	MAS = 10.00 (m)	0.00	0.00					Surface	Fail Major
179.88	32.81	178.90	147.07	N/A	MAS = 10.00 (m)	10.00	10.00					MinPts	
179.88	32.81	178.89	147.06	26850.72	MAS = 10.00 (m)	20.00	20.00					WRP	
180.09	32.81	177.75	147.26	132.28	MAS = 10.00 (m)	350.00	349.98					MinPts	
180.22	32.81	177.63	147.42	111.38	MAS = 10.00 (m)	400.00	399.93					MINPT-O-EOU	
309.38	32.81	297.85	276.57	29.24	MAS = 10.00 (m)	1850.00	1827.89					MinPt-O-SF	
885.19	43.70	855.73	841.49	31.05	OSF1.50	6380.00	6276.99					MinPt-O-SF	
412.28	32.81	395.15	379.47	25.48	MAS = 10.00 (m)	6970.00	6739.89					MinPt-O-SF	
112.95	35.84	88.67	77.11	4.84	OSF1.50	7410.00	6818.06	OSF<5.00				Enter Alert	
43.54	45.00	13.14	-1.46	1.45	OSF1.50	7500.00	6818.11		OSF<1.50			Enter Minor	
32.02	51.43	-2.64	-19.41	0.92	OSF1.50	7520.00	6818.12			OSF<1.00		Enter Major	
27.61	56.29	-10.24	-26.66	0.72	OSF1.50	7540.00	6818.13					MinPts	
33.52	52.03	-1.49	-18.50	0.96	OSF1.50	7560.00	6818.14					Exit Major	
46.09	46.75	14.60	-0.66	1.48	OSF1.50	7580.00	6818.15		OSF>1.50			Exit Minor	
131.22	41.73	103.08	89.50	4.80	OSF1.50	7680.00	6818.20	OSF>5.00				Exit Alert	
9506.98	48.40	9474.38	9458.58	300.72	OSF1.50	17107.56	6823.14					TD	

#### Swafford 11-11 GYRO 0' to 7356' - PR (Def Survey)

7342.65	32.81	7340.74	7309.84	73940.05	MAS = 10.00 (m)	0.00	0.00					MinPts	Fail Major
7342.66	32.81	7340.71	7309.85	51860.94	MAS = 10.00 (m)	20.00	20.00					WRP	
295.50	95.18	229.57	200.32	4.92	OSF1.50	13110.00	6821.05	OSF<5.00				Enter Alert	
143.57	153.89	39.21	-10.32	1.40	OSF1.50	13290.00	6821.14		OSF<1.50			Enter Minor	
116.53	179.55	-4.26	-63.02	0.96	OSF1.50	13340.00	6821.17			OSF<1.00		Enter Major	
107.48	188.66	-18.63	-81.16	0.85	OSF1.50	13380.00	6821.19					MinPts	
107.45	187.97	-18.40	-80.52	0.85	OSF1.50	13390.00	6821.19					MinPt-CtCt	
112.80	177.61	-6.14	-64.80	0.95	OSF1.50	13420.00	6821.21			OSF>1.00		Exit Major	
136.70	146.51	38.49	-9.81	1.40	OSF1.50	13470.00	6821.24		OSF>5.00	OSF>1.50		Exit Minor	
267.13	82.60	211.53	184.53	4.92	OSF1.50	13630.00	6821.32					Exit Alert	
3723.31	51.84	3688.21	3671.47	111.13	OSF1.50	17107.56	6823.14					TD	

#### Skyway 4-11 GYRO 0' to 7794' - PR (Def Survey)

10980.52	32.81	10978.66	10947.71	236104.71	MAS = 10.00 (m)	0.00	0.00					MinPts	Fail Major
10980.52	32.81	10978.62	10947.71	123652.56	MAS = 10.00 (m)	20.00	20.00					WRP	
10460.88	40.12	10433.47	10420.76	411.67	OSF1.50	5560.00	5471.66					MinPt-O-SF	
374.50	121.09	290.21	253.41	4.94	OSF1.50	16670.00	6822.91	OSF<5.00				Enter Alert	
191.01	204.57	51.77	-13.56	1.40	OSF1.50	16880.00	6823.02		OSF<1.50			Enter Minor	
157.41	240.72	-5.35	-83.31	0.97	OSF1.50	16930.00	6823.05			OSF<1.00		Enter Major	
127.69	283.80	-62.04	-156.11	0.67	OSF1.50	17020.00	6823.09					MinPts	
153.66	234.04	-2.91	-80.39	0.98	OSF1.50	17107.56	6823.14					TD	

#### Bost Farm 4N-11C-L R1 mdv 13June19 (Def Plan)

20.04	16.22	19.05	3.81	N/A	MAS = 4.94 (m)	0.00	0.00	CtCt<=15m<15.00				Enter Alert	Fail Minor
20.04	16.22	19.05	3.81	N/A	MAS = 4.94 (m)	20.00	20.00					WRP	
20.04	16.22	17.86	3.81	15.96	MAS = 4.94 (m)	250.00	250.00					MinPts	
20.94	16.22	17.06	4.72	6.89	MAS = 4.94 (m)	540.00	539.50					MINPT-O-EOU	
58.13	19.21	45.00	38.99	4.70	OSF1.50	1800.00	1778.78					MinPt-O-SF	
63.56	19.80	50.03	43.76	4.99	OSF1.50	1960.00	1935.92	OSF>5.00				Exit Alert	
214.86	52.99	179.21	161.87	6.17	OSF1.50	6400.00	6296.51					MinPt-O-SF	
313.68	95.04	249.98	218.63	4.99	OSF1.50	8510.00	6818.64	OSF<5.00				Enter Alert	
336.37	336.40	111.77	-0.04	1.50	OSF1.50	15490.00	6822.29		OSF<1.50			Enter Minor	
318.20	391.35	56.98	-73.14	1.22	OSF1.50	17107.56	6823.14					MinPts	

#### Bost Farm 30N-11B-L - Plan (Def Plan)

20.04	16.22	19.05	3.82	N/A	MAS = 4.95 (m)	0.00	0.00	CtCt<=15m<15.00				Enter Alert	Fail Minor
20.04	16.22	19.05	3.82	N/A	MAS = 4.95 (m)	20.00	20.00					MinPts	
20.32	16.22	18.61	4.09	26.86	MAS = 4.95 (m)	210.00	210.00					MINPT-O-EOU	
28.95	16.22	23.22	12.73	5.90	MAS = 4.95 (m)	860.00	855.56					MinPts	
29.22	16.22	22.91	12.99	5.30	MAS = 4.95 (m)	940.00	934.13					MINPT-O-EOU	
31.68	16.22	24.34	15.46	4.83	MAS = 4.95 (m)	1080.00	1071.63					MinPt-O-SF	
49.10	16.22	39.33	32.87	5.48	MAS = 4.95 (m)	1480.00	1464.49			CtCt<=15m>15.00		Exit Alert	
56.17	16.44	44.88	39.73	5.36	OSF1.50	1800.00	1778.78					MinPt-O-ADP	
56.80	16.86	45.23	39.94	5.27	OSF1.50	1880.00	1857.35					MinPt-O-SF	
175.37	52.84	139.82	122.53	5.04	OSF1.50	6380.00	6276.99					MinPt-O-SF	
269.28	81.73	214.47	187.55	4.98	OSF1.50	8850.00	6818.82	OSF<5.00				Enter Alert	
258.62	258.97	85.65	-0.34	1.50	OSF1.50	14060.00	6821.54		OSF<1.50			Enter Minor	
252.66	367.80	7.13	-115.14	1.03	OSF1.50	17107.56	6823.14					MinPts	

#### Bost Farm 4N-11B-L - Plan (Def Plan)

40.08	32.25	39.09	7.82	N/A	MAS = 9.83 (m)	0.00	0.00	CtCt<=15m<15.00				Enter Alert	Warning Alert
40.08	32.25	39.09	7.82	N/A	MAS = 9.83 (m)	20.00	20.00					WRP	
37.88	32.25	34.74	5.63	17.16	MAS = 9.83 (m)	410.00	409.92					MinPts	
37.96	32.25	34.65	5.71	15.94	MAS = 9.83 (m)	440.00	439.86					MINPT-O-EOU	
46.57	32.25	41.32	14.32	10.69	MAS = 9.83 (m)	730.00	727.76					MinPt-O-SF	

...Bost Farm 30N-11A-L\Original Hole\Bost Farm 30N-11A-L R1 mdv 13June19

Offset Trajectory	Separation			Allow Dev. (ft)	Sep. Fact.	Controlling Rule	Reference Trajectory		Risk Level			Alert	Status	
	Ct-Ct (ft)	MAS (ft)	EOU (ft)				MD (ft)	TVD (ft)	Alert	Minor	Major			
	48.78	32.25	43.35	16.52	10.76	MAS = 9.83 (m)	770.00	767.15	CtCt<=15m>15.00			Exit Alert		
	93.15	32.25	84.18	60.89	11.55	MAS = 9.83 (m)	1500.00	1484.13		MinPt-O-SF				
	461.45	139.29	368.26	322.16	4.99	OSF1.50	9760.00	6819.29		Enter Alert				
	456.70	405.62	185.96	51.08	1.69	OSF1.50	17107.56	6823.14		MinPts				
	Bost Farm 4C-11-L2 - Plan (Def Plan)													
	60.11	32.81	59.13	27.30	N/A	MAS = 10.00 (m)	0.00	0.00			Surface	Warning Alert		
	60.11	32.81	59.13	27.30	N/A	MAS = 10.00 (m)	20.00	20.00			MinPts			
	60.42	32.81	58.93	27.61	117.64	MAS = 10.00 (m)	160.00	160.00			MINPT-O-EOU			
	60.84	32.81	58.96	28.03	66.69	MAS = 10.00 (m)	250.00	250.00			MINPT-O-EOU			
	83.16	32.81	78.15	50.35	20.40	MAS = 10.00 (m)	820.00	816.27			MinPt-O-SF			
	91.20	32.81	85.78	58.39	20.33	MAS = 10.00 (m)	910.00	904.67			MinPt-O-SF			
	125.71	32.81	118.30	92.90	19.42	MAS = 10.00 (m)	1270.00	1258.24			MinPt-O-SF			
	163.27	32.81	153.95	130.46	19.47	MAS = 10.00 (m)	1630.00	1611.81			MinPt-O-SF			
	180.07	32.81	169.90	147.26	19.48	MAS = 10.00 (m)	1800.00	1778.78			MinPt-O-SF			
	653.00	52.37	617.76	600.64	19.03	OSF1.50	6630.00	6508.64			MinPt-O-SF			
	744.57	224.34	594.68	520.23	4.99	OSF1.50	12240.00	6820.59	OSF<5.00		Enter Alert			
	749.62	398.52	483.61	351.10	2.82	OSF1.50	17107.56	6823.14			MinPts			
	Bost Farm 31N-11C-L - Plan (Def Plan)													
		79.79	32.81	78.80	46.98	N/A	MAS = 10.00 (m)	0.00	0.00			Surface	Warning Alert	
		79.79	32.81	78.80	46.98	N/A	MAS = 10.00 (m)	20.00	20.00			WRP		
78.86		32.81	76.76	46.05	70.25	MAS = 10.00 (m)	300.00	300.00			MinPts			
78.94		32.81	76.68	46.13	61.50	MAS = 10.00 (m)	330.00	329.99			MINPT-O-EOU			
103.32		32.81	98.58	70.52	27.20	MAS = 10.00 (m)	740.00	737.61			MinPt-O-SF			
111.08		32.81	106.06	78.27	27.25	MAS = 10.00 (m)	800.00	796.63			MinPt-O-SF			
237.41		32.81	227.23	204.60	25.72	MAS = 10.00 (m)	1800.00	1778.78			MinPt-O-SF			
903.47		271.81	721.93	631.65	5.00	OSF1.50	13470.00	6821.24	OSF<5.00		Enter Alert			
904.86		405.60	634.13	499.26	3.35	OSF1.50	17107.56	6823.14			MinPts			
Bost Farm 31N-11B-L - Plan (Def Plan)														
		99.83	32.81	98.84	67.02	N/A	MAS = 10.00 (m)	0.00	0.00			Surface	Warning Alert	
	99.83	32.81	98.84	67.02	N/A	MAS = 10.00 (m)	20.00	20.00			WRP			
	99.54	32.81	97.66	66.73	110.59	MAS = 10.00 (m)	250.00	250.00			MinPts			
	99.58	32.81	97.63	66.77	101.71	MAS = 10.00 (m)	270.00	270.00			MINPT-O-EOU			
	296.22	32.81	286.13	263.41	32.40	MAS = 10.00 (m)	1800.00	1778.78			MinPt-O-SF			
	1107.17	332.86	884.93	774.31	5.00	OSF1.50	15140.00	6822.11	OSF<5.00		Enter Alert			
	1106.62	405.74	835.80	700.88	4.10	OSF1.50	17107.56	6823.14			MinPts			
	Bost Farm 26N-8B-L IFR 0' to 17610' - DG (Def Survey)													
	181.16	32.81	180.17	148.35	N/A	MAS = 10.00 (m)	0.00	0.00			Surface	Warning Alert		
	181.16	32.81	180.16	148.35	24320.32	MAS = 10.00 (m)	20.00	20.00			WRP			
	179.56	32.81	177.77	146.75	221.69	MAS = 10.00 (m)	230.00	230.00			MinPts			
	179.61	32.81	177.74	146.80	201.75	MAS = 10.00 (m)	250.00	250.00			MINPT-O-EOU			
	247.14	32.81	238.68	214.33	32.96	MAS = 10.00 (m)	1350.00	1336.81			MinPt-O-SF			
	305.89	32.81	294.95	273.08	30.63	MAS = 10.00 (m)	1850.00	1827.89			MinPt-O-SF			
	917.89	44.42	887.95	873.47	31.66	OSF1.50	6220.00	6119.88			MinPt-O-SF			
	181.92	55.53	144.58	126.40	4.98	OSF1.50	7390.00	6818.05	OSF<5.00		Enter Alert			
	182.02	55.70	144.55	126.31	4.96	OSF1.50	7400.00	6818.06			MinPts			
	182.34	55.82	144.80	126.52	4.96	OSF1.50	7410.00	6818.06			MinPt-O-SF			
	183.69	55.86	146.12	127.83	4.99	OSF1.50	7430.00	6818.07	OSF<5.00		Exit Alert			
	9512.18	48.45	9479.56	9463.73	300.58	OSF1.50	17107.56	6823.14			TD			
	Artist 11-12 GYRO 0' to 7358' - SI (Def Survey)													
	8096.24	32.81	8093.99	8063.44	18446.78	MAS = 10.00 (m)	0.00	0.00			Surface	Warning Alert		
	8096.05	32.81	8093.72	8063.24	15727.87	MAS = 10.00 (m)	20.00	20.00			WRP			
	407.96	130.40	318.66	277.56	4.88	OSF1.50	13810.00	6821.41	OSF<5.00		Enter Alert			
	222.65	208.72	82.97	13.93	1.60	OSF1.50	14150.00	6821.59			MinPts			
	396.25	121.30	314.84	274.94	4.95	OSF1.50	14480.00	6821.76	OSF<5.00		Exit Alert			
	2962.00	54.34	2925.23	2907.65	84.20	OSF1.50	17107.56	6823.14			TD			
Skyway 3-11 GYRO+MWD 0' to 7939' - PR (Def Survey)														
	10949.62	32.81	10947.74	10916.81	153997.54	MAS = 10.00 (m)	0.00	0.00			Surface	Warning Alert		
	10949.60	32.81	10947.65	10916.79	80566.93	MAS = 10.00 (m)	20.00	20.00			WRP			
	584.66	181.30	461.26	403.36	4.98	OSF1.50	15210.00	6822.15	OSF<5.00		Enter Alert			
	394.13	251.11	226.19	143.02	2.36	OSF1.50	15640.00	6822.37			MinPts			
	574.54	175.86	456.76	398.68	4.93	OSF1.50	16060.00	6822.59	OSF<5.00		Exit Alert			
	1517.55	82.82	1461.80	1434.73	28.00	OSF1.50	17107.56	6823.14			TD			
Bost Farm 31C-11-L - Plan (Def Plan)														
	119.86	32.81	118.88	87.05	N/A	MAS = 10.00 (m)	0.00	0.00			Surface	Pass		
	119.86	32.81	118.88	87.05	N/A	MAS = 10.00 (m)	20.00	20.00			WRP			
	118.43	32.81	116.44	85.62	117.01	MAS = 10.00 (m)	270.00	270.00			MinPts			
	118.45	32.81	116.42	85.64	112.61	MAS = 10.00 (m)	280.00	280.00			MINPT-O-EOU			
	179.12	32.81	174.07	146.31	43.90	MAS = 10.00 (m)	830.00	826.09			MinPt-O-SF			
	359.30	32.81	349.24	326.49	39.48	MAS = 10.00 (m)	1800.00	1778.78			MinPt-O-SF			
	1357.14	404.25	1087.31	952.89	5.04	OSF1.50	17107.56	6823.14			MinPts			
Bost Farm 5N-11A-L - Plan (Def Plan)														
	139.90	32.81	138.09	107.09	N/A	MAS = 10.00 (m)	0.00	0.00			Surface	Pass		
	139.90	32.81	138.09	107.09	N/A	MAS = 10.00 (m)	20.00	20.00			WRP			
	139.07	32.81	136.15	106.26	124.47	MAS = 10.00 (m)	250.00	250.00			MinPts			
	139.08	32.81	136.12	106.27	119.44	MAS = 10.00 (m)	260.00	260.00			MINPT-O-EOU			
	218.37	32.81	212.14	185.56	48.95	MAS = 10.00 (m)	830.00	826.09			MinPt-O-SF			
	413.75	32.81	402.93	380.95	45.70	MAS = 10.00 (m)	1780.00	1759.14			MinPt-O-SF			
	417.80	32.81	407.69	384.99	45.67	MAS = 10.00 (m)	1800.00	1778.78			MinPt-O-SF			
	1539.54	403.73	1270.06	1135.81	5.73	OSF1.50	17107.56	6823.14			MinPts			
	Bost Farm 5C-11-L - Plan (Def Plan)													
		159.94	32.81	158.95	127.13	N/A	MAS = 10.00 (m)	0.00	0.00			Surface	Pass	
159.94		32.81	158.95	127.13	N/A	MAS = 10.00 (m)	20.00	20.00			WRP			
159.93		32.81	158.64	127.12	525.36	MAS = 10.00 (m)	110.00	110.00			MinPts			
160.10		32.81	158.28	127.30	189.20	MAS = 10.00 (m)	210.00	210.00			MINPT-O-EOU			
265.71		32.81	259.86	232.90	54.49	MAS = 10.00 (m)	930.00	924.31			MinPt-O-SF			
472.10		32.81	461.87	439.29	50.93	MAS = 10.00 (m)	1800.00	1778.78			MinPt-O-SF			
1785.70		403.10	1516.65	1382.61	6.66	OSF1.50	17107.56	6823.14			MinPts			

...Bost Farm 30N-11A-L\Original Hole\Bost Farm 30N-11A-L R1 mdy 13June19

Offset Trajectory	Separation			Allow Dev. (ft)	Sep. Fact.	Controlling Rule	Reference Trajectory		Risk Level			Alert	Status	
	Ct-Ct (ft)	MAS (ft)	EOU (ft)				MD (ft)	TVD (ft)	Alert	Minor	Major			
Bost Farm 32N-11C-L R0 mdv 12June19 (Def Plan)														
	179.98	32.81	178.99	147.17	N/A	MAS = 10.00 (m)	0.00	0.00				Surface	Pass	
	179.98	32.81	178.99	147.17	N/A	MAS = 10.00 (m)	20.00	20.00				WRP		
	178.45	32.81	176.60	145.64	203.67	MAS = 10.00 (m)	250.00	250.00				MinPts		
	178.46	32.81	176.57	145.65	195.03	MAS = 10.00 (m)	260.00	260.00				MINPT-O-EOU		
	272.42	32.81	266.88	239.61	59.59	MAS = 10.00 (m)	860.00	855.56				MinPt-O-SF		
	448.87	32.81	440.14	416.06	57.86	MAS = 10.00 (m)	1510.00	1493.96				MinPt-O-SF		
	526.86	32.81	516.63	494.05	56.87	MAS = 10.00 (m)	1800.00	1778.78				MinPt-O-SF		
	1698.62	43.18	1669.51	1655.44	60.35	OSF1.50	5760.00	5668.09				MinPt-O-SF		
	1729.86	43.60	1700.46	1686.25	60.85	OSF1.50	5920.00	5825.23				MinPt-O-SF		
	1987.93	401.77	1719.76	1586.17	7.44	OSF1.50	17107.56	6823.14				MinPts		
Bost Farm 1N-8C-L IFR 0' to 17675' - DG (Def Survey)														
	181.11	32.81	179.30	148.30	N/A	MAS = 10.00 (m)	0.00	0.00				Surface	Pass	
	181.11	32.81	179.29	148.30	25987.99	MAS = 10.00 (m)	20.00	20.00				WRP		
	180.16	32.81	177.47	147.35	203.63	MAS = 10.00 (m)	250.00	250.00				MinPts		
	180.15	32.81	177.19	147.34	156.11	MAS = 10.00 (m)	320.00	319.99				MinPts		
	180.25	32.81	177.11	147.44	134.32	MAS = 10.00 (m)	360.00	359.97				MINPT-O-EOU		
	320.16	32.81	308.63	287.35	32.10	MAS = 10.00 (m)	1800.00	1778.78				MinPt-O-SF		
	555.75	32.81	539.76	522.94	36.97	MAS = 10.00 (m)	3760.00	3703.79				MinPt-O-SF		
	650.96	32.81	632.08	618.16	36.32	MAS = 10.00 (m)	4430.00	4361.83				MinPt-O-SF		
	843.31	36.91	818.38	806.41	35.17	OSF1.50	5680.00	5589.52				MinPt-O-SF		
	924.90	41.25	897.08	883.65	34.42	OSF1.50	6240.00	6139.52				MinPt-O-SF		
	283.18	53.21	247.37	229.97	8.11	OSF1.50	7460.00	6818.09				MinPt-O-SF		
	283.08	53.16	247.31	229.92	8.11	OSF1.50	7470.00	6818.09				MinPts		
	9505.38	46.52	9474.04	9458.86	313.10	OSF1.50	17107.56	6823.14				TD		
Bost Farm 1N-8B-L IFR 0' to 17550' - DG (Def Survey)														
	184.25	32.81	182.44	151.44	N/A	MAS = 10.00 (m)	0.00	0.00				Surface		Pass
	184.25	32.81	182.44	151.44	N/A	MAS = 10.00 (m)	10.00	10.00				MinPts		
	184.25	32.81	182.43	151.44	27374.79	MAS = 10.00 (m)	20.00	20.00				WRP		
	184.61	32.81	181.80	151.80	183.31	MAS = 10.00 (m)	230.00	230.00				MINPT-O-EOU		
	278.33	32.81	268.68	245.52	35.31	MAS = 10.00 (m)	1350.00	1336.81				MinPt-O-SF		
	292.21	32.81	282.16	259.40	35.28	MAS = 10.00 (m)	1440.00	1425.21				MinPt-O-SF		
	347.86	32.81	336.03	315.05	33.88	MAS = 10.00 (m)	1850.00	1827.89				MinPt-O-SF		
	605.95	32.81	590.76	573.14	42.59	MAS = 10.00 (m)	3580.00	3527.00				MinPt-O-SF		
	668.08	32.81	651.50	635.28	42.76	MAS = 10.00 (m)	3980.00	3919.86				MinPt-O-SF		
	931.29	39.41	904.69	891.88	36.32	OSF1.50	6120.00	6021.66				MinPt-O-SF		
	425.86	50.55	391.84	375.32	12.86	OSF1.50	7400.00	6818.06				MinPts		
	425.94	50.58	391.89	375.36	12.85	OSF1.50	7410.00	6818.06				MinPt-O-SF		
	9537.95	45.52	9507.27	9492.43	321.19	OSF1.50	17107.56	6823.14				TD		
Bost Farm 41N-8C-L IFR 0' to 17635' - DG (Def Survey)														
	189.73	32.81	188.74	156.92	N/A	MAS = 10.00 (m)	0.00	0.00				Surface	Pass	
	189.73	32.81	188.74	156.92	28145.65	MAS = 10.00 (m)	20.00	20.00				WRP		
	189.34	32.81	187.50	156.54	218.11	MAS = 10.00 (m)	240.00	240.00				MinPts		
	189.36	32.81	187.48	156.55	209.70	MAS = 10.00 (m)	250.00	250.00				MINPT-O-EOU		
	366.97	32.81	356.27	334.16	37.67	MAS = 10.00 (m)	1800.00	1778.78				MinPt-O-SF		
	372.79	32.81	361.94	339.98	37.70	MAS = 10.00 (m)	1840.00	1818.06				MinPt-O-SF		
	581.36	32.81	567.28	548.55	44.33	MAS = 10.00 (m)	3130.00	3085.04				MinPt-O-SF		
	1076.84	41.35	1048.94	1035.49	39.98	OSF1.50	6230.00	6129.70				MinPt-O-SF		
	630.40	52.07	595.36	578.33	18.48	OSF1.50	7370.00	6818.04				MinPt-CiCt		
	630.44	52.19	595.32	578.26	18.44	OSF1.50	7380.00	6818.05				MinPts		
	635.89	53.19	600.10	582.70	18.24	OSF1.50	7480.00	6818.10				MinPt-O-SF		
	9540.88	49.63	9507.46	9491.24	294.14	OSF1.50	17107.56	6823.14				TD		
Bost Farm 41C-8-L IFR 0' to 17718' - DG (Def Survey)														
	196.85	32.81	195.86	164.04	N/A	MAS = 10.00 (m)	0.00	0.00				Surface		Pass
	196.85	32.81	195.86	164.04	N/A	MAS = 10.00 (m)	10.00	10.00				MinPts		
	196.85	32.81	195.86	164.04	29361.20	MAS = 10.00 (m)	20.00	20.00				WRP		
	196.95	32.81	195.16	164.14	244.44	MAS = 10.00 (m)	230.00	230.00				MINPT-O-EOU		
	398.02	32.81	387.37	365.21	41.08	MAS = 10.00 (m)	1800.00	1778.78				MinPt-O-SF		
	732.68	32.81	717.36	699.88	51.01	MAS = 10.00 (m)	3800.00	3743.08				MinPt-O-SF		
	886.65	51.07	852.28	835.59	26.53	OSF1.50	7530.00	6818.13				MinPt-CiCt		
	886.67	51.15	852.25	835.52	26.48	OSF1.50	7540.00	6818.13				MinPts		
	894.49	52.12	859.41	842.37	26.21	OSF1.50	7660.00	6818.19				MinPt-O-SF		
	9553.60	49.04	9520.58	9504.56	298.16	OSF1.50	17107.56	6823.14				TD		
Bost Farm 32C-11-L - Plan (Def Plan)														
	200.01	32.81	199.03	167.20	N/A	MAS = 10.00 (m)	0.00	0.00				Surface	Pass	
	200.01	32.81	199.03	167.20	N/A	MAS = 10.00 (m)	20.00	20.00				WRP		
	199.59	32.81	197.54	166.78	187.76	MAS = 10.00 (m)	250.00	250.00				MinPts		
	199.60	32.81	197.51	166.79	180.96	MAS = 10.00 (m)	260.00	260.00				MINPT-O-EOU		
	414.00	32.81	406.27	381.19	61.27	MAS = 10.00 (m)	1250.00	1238.60				MinPt-O-SF		
	581.18	32.81	570.83	548.37	61.94	MAS = 10.00 (m)	1800.00	1778.78				MinPt-O-SF		
	2191.56	56.65	2153.46	2134.91	59.02	OSF1.50	7200.00	6811.64				MinPt-O-SF		
	2217.60	57.28	2179.08	2160.31	59.06	OSF1.50	7290.29	6818.00				MinPt-O-SF		
	2221.66	402.19	1953.21	1819.48	8.30	OSF1.50	17107.56	6823.14				MinPts		
Bost Farm 41N-8B-L IFR 0' to 17620' - DG (Def Survey)														
	205.75	32.81	204.77	172.94	N/A	MAS = 10.00 (m)	0.00	0.00				Surface	Pass	
	205.75	32.81	204.76	172.94	30542.02	MAS = 10.00 (m)	20.00	20.00				WRP		
	205.64	32.81	204.21	172.84	458.25	MAS = 10.00 (m)	140.00	140.00				MinPts		
	205.72	32.81	204.15	172.91	351.12	MAS = 10.00 (m)	170.00	170.00				MINPT-O-EOU		
	437.04	32.81	425.93	404.23	43.05	MAS = 10.00 (m)	1800.00	1778.78				MinPt-O-SF		
	799.16	32.81	783.97	766.35	56.19	MAS = 10.00 (m)	3650.00	3595.76				MinPt-O-SF		
	918.55	32.81	901.42	885.75	56.82	MAS = 10.00 (m)	4200.00	4135.94				MinPt-O-SF		
	949.48	32.81	931.80	916.67	56.79	MAS = 10.00 (m)	4330.00	4263.62				MinPt-O-SF		
	975.61	32.81	957.48	942.81	56.82	MAS = 10.00 (m)	4440.00	4371.65				MinPt-O-SF		
	992.39	32.81	973.96	959.58	56.83	MAS = 10.00 (m)	4510.00	4440.40				MinPt-O-SF		
	1153.67	49.01	1120.66	1104.65	36.00	OSF1.50	7040.00	6769.88				MinPt-CiCt		
	1153.68	49.06	1120.64	1104.62	35.96	OSF1.50	7050.00	6773.60				MinPts		
	1153.81	49.15	1120.72	1104.66	35.90	OSF1.50	7070.00	6780.60				MinPt-O-SF		
	1100.22	50.20	1066.42	1050.02	33.50	OSF1.50	7530.00	6818.13				MinPt-CiCt		
	1100.24	50.29	1066.39	1049.95	33.44	OSF1.50	7540.00	6818.13				MinPts		
	1114.03	51.69	1079.25	1062.34	32.93	OSF1.50	7720.00	6818.22				MinPt-O-SF		
	9551.58	50.66	9517.48	9500.92	288.40	OSF1.50	17107.56	6823.14				TD		
Bost Farm 41N-8A-L IFR 0' to 17515' - DG (Def Survey)														
														Pass

...Bost Farm 30N-11A-L\Original Hole\Bost Farm 30N-11A-L R1 mdv 13June19

Offset Trajectory	Separation			Allow Dev. (ft)	Sep. Fact.	Controlling Rule	Reference Trajectory		Risk Level			Alert	Status
	Ct-Ct (ft)	MAS (ft)	EOU (ft)				MD (ft)	TVD (ft)	Alert	Minor	Major		
	216.28	32.81	215.30	183.47	N/A	MAS = 10.00 (m)	0.00	0.00				Surface	
	216.28	32.81	215.30	183.47	N/A	MAS = 10.00 (m)	10.00	10.00				MinPts	
	216.28	32.81	215.29	183.47	32241.43	MAS = 10.00 (m)	20.00	20.00				WRP	
	216.44	32.81	214.62	183.63	258.12	MAS = 10.00 (m)	230.00	230.00				MinPts	
	216.47	32.81	214.61	183.66	247.86	MAS = 10.00 (m)	240.00	240.00				MINPT-O-EOU	
	357.16	32.81	349.12	324.35	50.48	MAS = 10.00 (m)	1280.00	1268.06				MinPt-O-SF	
	475.41	32.81	464.70	442.60	48.78	MAS = 10.00 (m)	1800.00	1778.78				MinPt-O-SF	
	893.61	32.81	878.20	860.80	61.87	MAS = 10.00 (m)	3720.00	3664.51				MinPt-O-SF	
	1037.61	32.81	1020.44	1004.80	64.07	MAS = 10.00 (m)	4280.00	4214.51				MinPt-O-SF	
	1200.95	32.81	1179.65	1168.14	59.09	MAS = 10.00 (m)	5040.00	4960.94				MinPt-O-SF	
	1334.15	36.41	1309.54	1297.73	56.45	OSF1.50	5730.00	5638.63				MinPt-O-SF	
	1432.65	38.85	1406.42	1393.80	56.71	OSF1.50	6150.00	6051.13				MinPt-O-SF	
	1360.64	49.56	1327.28	1311.09	41.99	OSF1.50	6680.00	6550.16				MinPt-O-SF	
	1355.51	48.54	1322.82	1306.97	42.72	OSF1.50	6860.00	6679.50				MinPts	
	1355.62	48.55	1322.92	1307.06	42.72	OSF1.50	6880.00	6691.62				MinPt-O-SF	
	1356.22	48.57	1323.51	1307.65	42.72	OSF1.50	6920.00	6714.38				MinPt-O-SF	
	1354.64	46.00	1323.65	1308.64	45.11	OSF1.50	6990.00	6749.16				MinPt-O-SF	
	1294.84	48.82	1261.96	1246.02	40.57	OSF1.50	7500.00	6818.11				MinPt-CtCt	
	1294.85	48.96	1261.92	1245.95	40.50	OSF1.50	7510.00	6818.11				MINPT-O-EOU	
	1294.92	48.98	1261.94	1245.94	40.44	OSF1.50	7520.00	6818.12				MinPt-O-ADP	
	1315.13	50.57	1281.08	1264.55	39.73	OSF1.50	7750.00	6818.24				MinPt-O-SF	
	9604.96	51.81	9570.09	9553.15	283.46	OSF1.50	17107.56	6823.14				TD	
UPRC 7-4H6 GYRO 0' to 7342' - PR (Def Survey)													Pass
	715.69	32.81	713.88	682.88	N/A	MAS = 10.00 (m)	0.00	0.00				Surface	
	715.56	32.81	713.73	682.75	42313.22	MAS = 10.00 (m)	20.00	20.00				MinPts	
	220.22	32.81	200.34	187.42	11.96	MAS = 10.00 (m)	4190.00	4126.12				MinPts	
	220.29	32.81	200.29	187.48	11.88	MAS = 10.00 (m)	4230.00	4165.40				MINPT-O-EOU	
	222.81	32.81	202.33	190.00	11.72	MAS = 10.00 (m)	4420.00	4352.01				MinPt-O-SF	
	10498.62	46.95	10466.78	10451.66	347.19	OSF1.50	17107.56	6823.14				TD	
Bost Farm 8N-8C-L IFR 0' to 17645 - DG (Def Survey)													Pass
	227.87	32.81	226.88	195.06	N/A	MAS = 10.00 (m)	0.00	0.00				Surface	
	227.87	32.81	226.88	195.06	N/A	MAS = 10.00 (m)	10.00	10.00				MinPts	
	227.87	32.81	226.88	195.06	34138.54	MAS = 10.00 (m)	20.00	20.00				WRP	
	228.42	32.81	226.44	195.61	229.37	MAS = 10.00 (m)	230.00	230.00				MINPT-O-EOU	
	385.68	32.81	377.27	352.87	51.81	MAS = 10.00 (m)	1280.00	1268.06				MinPt-O-SF	
	407.37	32.81	398.55	374.56	51.87	MAS = 10.00 (m)	1370.00	1356.45				MinPt-O-SF	
	507.24	32.81	496.19	474.43	50.27	MAS = 10.00 (m)	1800.00	1778.78				MinPt-O-SF	
	957.11	32.81	941.54	924.31	65.55	MAS = 10.00 (m)	3590.00	3536.83				MinPt-O-SF	
	965.53	32.81	949.83	932.72	65.54	MAS = 10.00 (m)	3630.00	3576.11				MinPt-O-SF	
	1140.89	32.81	1123.01	1108.08	67.47	MAS = 10.00 (m)	4290.00	4224.33				MinPt-O-SF	
	1326.24	32.81	1304.95	1293.43	65.27	MAS = 10.00 (m)	4990.00	4911.84				MinPt-O-SF	
	1331.23	32.81	1309.86	1298.42	65.27	MAS = 10.00 (m)	5010.00	4931.48				MinPt-O-SF	
	1533.03	51.12	1498.63	1481.92	45.84	OSF1.50	7550.00	6818.14				MinPt-CtCt	
	1533.04	51.21	1498.57	1481.83	45.76	OSF1.50	7560.00	6818.14				MINPT-O-EOU	
	1533.10	51.30	1498.57	1481.80	45.67	OSF1.50	7570.00	6818.15				MinPt-O-SF	
	1577.99	54.56	1541.29	1523.43	44.15	OSF1.50	7940.00	6818.34				MinPt-O-ADP	
	9638.36	56.73	9600.21	9581.63	259.31	OSF1.50	17107.56	6823.14				TD	
Bost Farm 8C-8-L IFR 0' to 17780 - DG (Def Survey)													Pass
	240.78	32.81	239.79	207.97	N/A	MAS = 10.00 (m)	0.00	0.00				Surface	
	240.78	32.81	239.79	207.97	N/A	MAS = 10.00 (m)	10.00	10.00				MinPts	
	240.78	32.81	239.79	207.97	35159.17	MAS = 10.00 (m)	20.00	20.00				WRP	
	240.83	32.81	239.74	208.02	2395.74	MAS = 10.00 (m)	50.00	50.00				MINPT-O-EOU	
	415.92	32.81	407.44	383.11	55.35	MAS = 10.00 (m)	1290.00	1277.88				MinPt-O-SF	
	553.24	32.81	541.94	520.43	53.57	MAS = 10.00 (m)	1800.00	1778.78				MinPt-O-SF	
	1046.96	32.81	1031.38	1014.15	71.67	MAS = 10.00 (m)	3600.00	3546.65				MinPt-O-SF	
	1295.32	32.81	1276.73	1262.51	73.54	MAS = 10.00 (m)	4440.00	4371.65				MinPt-O-SF	
	1581.30	35.98	1556.98	1545.32	67.73	OSF1.50	5490.00	5402.91				MinPt-O-SF	
	1689.79	38.50	1663.79	1651.28	67.52	OSF1.50	5910.00	5815.41				MinPt-O-SF	
	1783.91	41.56	1755.87	1742.35	65.91	OSF1.50	6280.00	6178.81				MinPt-O-SF	
	1828.78	49.77	1795.28	1779.02	56.20	OSF1.50	6910.00	6708.88				MinPts	
	1730.68	52.30	1695.49	1678.38	50.56	OSF1.50	7590.00	6818.16				MinPt-CtCt	
	1730.70	52.40	1695.44	1678.30	50.46	OSF1.50	7600.00	6818.16				MINPT-O-EOU	
	1730.78	52.51	1695.44	1678.27	50.36	OSF1.50	7610.00	6818.17				MinPt-O-ADP	
	1800.45	57.34	1761.90	1743.11	47.90	OSF1.50	8090.00	6818.42				MinPt-O-SF	
	1806.05	57.52	1767.38	1748.53	47.90	OSF1.50	8110.00	6818.43				MinPt-O-SF	
	9660.59	61.19	9619.47	9599.40	240.66	OSF1.50	17107.56	6823.14				TD	
Bost Farm 40N-8B-L IFR 0' to 17560 - DG (Def Survey)													Pass
	254.41	32.81	253.43	221.60	N/A	MAS = 10.00 (m)	0.00	0.00				Surface	
	254.41	32.81	253.43	221.60	N/A	MAS = 10.00 (m)	10.00	10.00				MinPts	
	254.41	32.81	253.42	221.60	57116.20	MAS = 10.00 (m)	20.00	20.00				WRP	
	254.69	32.81	253.26	221.88	571.31	MAS = 10.00 (m)	140.00	140.00				MINPT-O-EOU	
	536.01	32.81	526.05	503.20	59.58	MAS = 10.00 (m)	1590.00	1572.53				MinPt-O-SF	
	598.61	32.81	587.64	565.81	59.82	MAS = 10.00 (m)	1800.00	1778.78				MinPt-O-SF	
	1214.57	32.81	1197.94	1181.76	77.58	MAS = 10.00 (m)	3870.00	3811.83				MinPt-O-SF	
	1628.51	33.20	1606.04	1595.31	75.78	OSF1.50	5200.00	5118.09				MinPt-O-SF	
	1914.43	40.86	1886.86	1873.57	71.98	OSF1.50	6150.00	6051.13				MinPt-O-SF	
	1996.85	47.59	1964.79	1949.25	64.23	OSF1.50	6850.00	6673.25				MinPt-O-SF	
	1996.33	47.52	1964.33	1948.81	64.31	OSF1.50	6860.00	6679.50				MinPt-O-ADP	
	1958.83	50.62	1924.76	1908.21	59.17	OSF1.50	7350.00	6818.03				MinPts	
	1952.37	51.25	1917.87	1901.12	58.23	OSF1.50	7520.00	6818.12				MinPt-CtCt	
	1952.43	51.43	1917.82	1901.00	58.02	OSF1.50	7540.00	6818.13				MinPts	
	2043.23	56.76	2005.06	1986.47	54.92	OSF1.50	8140.00	6818.44				MinPt-O-SF	
	9736.88	63.46	9694.25	9673.42	233.75	OSF1.50	17107.56	6823.14				TD	
Bost Farm 40C-8-L IFR 0' to 17820 - DG (Def Survey)													Pass
	269.04	32.81	268.06	236.23	N/A	MAS = 10.00 (m)	0.00	0.00				Surface	
	269.04	32.81	268.05	236.23	60241.79	MAS = 10.00 (m)	20.00	20.00				WRP	
	268.82	32.81	266.73	236.01	241.98								

Offset Trajectory	Separation			Allow Dev. (ft)	Sep. Fact.	Controlling Rule	Reference Trajectory		Risk Level			Alert	Status
	Ct-Ct (ft)	MAS (ft)	EOU (ft)				MD (ft)	TVD (ft)	Alert	Minor	Major		
Sheep 2-12 GYRO 0' to 7880' - PR (Def Survey)	2265.21	59.97	2224.91	2205.25	57.58	OSF1.50	8360.00	6818.56				MinPt-O-SF	
	9767.05	69.81	9720.18	9697.24	212.84	OSF1.50	17107.56	6823.14				TD	
													Pass
Sheep 2-12 GYRO 0' to 7880' - PR (Def Survey)	3108.97	32.81	3107.16	3076.16	N/A	MAS = 10.00 (m)	0.00	0.00				Surface	
	3108.96	32.81	3107.14	3076.15	688583.59	MAS = 10.00 (m)	10.00	10.00				MinPts	
	3108.96	32.81	3107.12	3076.15	114734.47	MAS = 10.00 (m)	20.00	20.00				WRP	
	3108.91	32.81	3106.21	3076.10	3477.42	MAS = 10.00 (m)	250.00	250.00				MinPts	
	3109.84	32.81	3105.73	3077.03	1354.82	MAS = 10.00 (m)	530.00	529.55				MINPT-O-EOU	
	3110.70	32.81	3105.52	3077.89	921.59	MAS = 10.00 (m)	720.00	717.89				MINPT-O-EOU	
	363.48	93.27	300.77	270.21	5.92	OSF1.50	9070.00	6818.93				MinPt-O-SF	
	361.46	92.48	299.26	268.97	5.94	OSF1.50	9100.00	6818.95				MinPts	
	361.33	92.22	299.32	269.11	5.95	OSF1.50	9110.00	6818.95				MinPt-CtCt	
	8006.24	92.43	7944.08	7913.80	132.19	OSF1.50	17107.56	6823.14				TD	
													Pass
	1842.40	32.81	1840.59	1809.59	N/A	MAS = 10.00 (m)	0.00	0.00				Surface	
	1842.38	32.81	1840.56	1809.57	N/A	MAS = 10.00 (m)	10.00	10.00				MinPts	
	1842.38	32.81	1840.54	1809.57	88366.01	MAS = 10.00 (m)	20.00	20.00				WRP	
	1842.80	32.81	1840.28	1809.99	2615.60	MAS = 10.00 (m)	190.00	190.00				MINPT-O-EOU	
Detienne 1-12 GYRO 0' to 7318' - PR (Def Survey)	371.89	63.37	329.11	308.52	8.99	OSF1.50	7770.00	6818.25				MinPts	
	372.49	63.61	329.54	308.88	8.97	OSF1.50	7790.00	6818.26				MinPt-O-SF	
	9345.90	61.32	9304.49	9284.58	234.72	OSF1.50	17107.56	6823.14				TD	
													Pass
	763.03	32.81	761.22	730.22	N/A	MAS = 10.00 (m)	0.00	0.00				Surface	
	762.88	32.81	761.04	730.07	36540.74	MAS = 10.00 (m)	10.00	10.00				MinPt-O-SF	
	762.84	32.81	761.02	730.03	122403.43	MAS = 10.00 (m)	20.00	20.00				WRP	
	762.60	32.81	759.69	729.78	695.02	MAS = 10.00 (m)	290.00	290.00				MinPts	
	762.70	32.81	759.53	729.89	560.20	MAS = 10.00 (m)	350.00	349.98				MINPT-O-EOU	
	833.61	32.81	822.10	800.80	83.96	MAS = 10.00 (m)	1930.00	1906.46				MinPt-O-SF	
UPRC 7-5H6 GYRO 0' to 7363' - PR (Def Survey)	1359.80	49.08	1326.54	1310.72	42.91	OSF1.50	6730.00	6589.45				MinPt-O-SF	
	10635.41	50.52	10601.20	10584.89	326.10	OSF1.50	17107.56	6823.14				TD	
													Pass
	10997.46	32.81	10995.60	10964.65	219893.35	MAS = 10.00 (m)	0.00	0.00				Surface	
	10997.43	32.81	10995.49	10964.62	82315.95	MAS = 10.00 (m)	20.00	20.00				WRP	
	10767.69	32.81	10753.33	10734.88	844.68	MAS = 10.00 (m)	3490.00	3438.61				MinPts	
	10767.82	32.81	10753.18	10735.02	825.99	MAS = 10.00 (m)	3580.00	3527.00				MINPT-O-EOU	
	10794.49	32.81	10774.63	10761.69	591.01	MAS = 10.00 (m)	4710.00	4636.83				MinPts	
	10794.77	32.81	10774.33	10761.96	572.96	MAS = 10.00 (m)	4830.00	4754.69				MINPT-O-EOU	
	10809.71	35.28	10785.66	10774.43	481.46	OSF1.50	5470.00	5383.27				MinPts	
Napolean J 7-3 GYRO 0' to 7355' - PA (Def Survey)	920.04	270.03	738.47	650.01	5.17	OSF1.50	17107.56	6823.14				MinPts	
													Pass
	1004.67	32.81	1002.86	971.86	N/A	MAS = 10.00 (m)	0.00	0.00				Surface	
	1004.48	32.81	1002.64	971.67	31693.79	MAS = 10.00 (m)	10.00	10.00				MinPt-O-SF	
	1004.39	32.81	1002.56	971.59	55454.23	MAS = 10.00 (m)	20.00	20.00				WRP	
	1004.39	32.81	1002.55	971.58	39419.01	MAS = 10.00 (m)	30.00	30.00				MinPts	
	923.08	32.81	908.52	890.27	71.15	MAS = 10.00 (m)	2590.00	2554.68				MinPts	
	923.20	32.81	908.42	890.39	69.99	MAS = 10.00 (m)	2660.00	2623.43				MINPT-O-EOU	
	1124.98	49.97	1091.13	1075.00	34.84	OSF1.50	6400.00	6296.51				MinPt-O-SF	
	11552.20	58.17	11512.88	11494.03	306.30	OSF1.50	17107.56	6823.14				TD	
													Pass
	973.59	32.81	971.78	940.78	N/A	MAS = 10.00 (m)	0.00	0.00				Surface	
Napolean J 7-6 GYRO 0' to 7675' - PR (Def Survey)	973.41	32.81	971.56	940.69	32050.71	MAS = 10.00 (m)	10.00	10.00				MinPt-O-SF	
	973.33	32.81	971.50	940.52	69431.48	MAS = 10.00 (m)	20.00	20.00				WRP	
	925.58	32.81	913.02	892.78	84.30	MAS = 10.00 (m)	2200.00	2171.64				MinPts	
	925.62	32.81	912.96	892.81	83.67	MAS = 10.00 (m)	2220.00	2191.28				MINPT-O-EOU	
	1212.91	32.81	1191.98	1180.10	62.66	MAS = 10.00 (m)	3720.00	3664.51				MinPt-O-SF	
	1514.23	36.35	1489.46	1477.88	65.30	OSF1.50	4470.00	4401.12				MinPt-O-SF	
	1721.72	40.94	1693.89	1680.78	65.59	OSF1.50	4930.00	4852.91				MinPt-O-SF	
	1981.73	49.23	1948.38	1932.51	62.37	OSF1.50	5600.00	5510.95				MinPt-O-SF	
	2105.80	51.61	2070.86	2054.19	63.12	OSF1.50	6370.00	6267.19				MinPt-O-SF	
	2125.28	52.22	2089.93	2073.06	62.93	OSF1.50	6450.00	6344.80				MinPt-O-SF	
	11949.67	78.16	11897.03	11871.51	234.12	OSF1.50	17107.56	6823.14				TD	
													Pass
	10927.65	32.81	10925.79	10894.84	255996.19	MAS = 10.00 (m)	0.00	0.00				MinPts	
	10927.67	32.81	10925.77	10894.86	133837.32	MAS = 10.00 (m)	20.00	20.00				WRP	
	10927.78	32.81	10925.73	10894.97	45734.03	MAS = 10.00 (m)	80.00	80.00				MINPT-O-EOU	
	973.30	263.74	796.94	709.57	5.56	OSF1.50	16210.00	6822.67				MinPt-CtCt	
Skyway 18-11 GYRO+MWD 0' to 7919' - PR (Def Survey)	973.32	263.87	796.87	709.45	5.56	OSF1.50	16220.00	6822.68				MinPts	
	973.67	264.06	797.09	709.61	5.56	OSF1.50	16240.00	6822.69				MinPt-O-SF	
	1321.91	206.87	1183.46	1115.04	9.65	OSF1.50	17107.56	6823.14				TD	
													Pass
	1865.89	32.81	1864.08	1833.09	N/A	MAS = 10.00 (m)	0.00	0.00				Surface	
	1865.87	32.81	1863.85	1833.06	8955.88	MAS = 10.00 (m)	20.00	20.00				WRP	
	1803.59	179.45	1683.43	1624.15	15.20	OSF1.50	3060.00	3016.29				MinPt-CtCt	
	1844.68	301.02	1643.47	1543.67	9.23	OSF1.50	5120.00	5039.51				MINPT-O-EOU	
	1900.10	367.23	1654.75	1532.87	7.79	OSF1.50	6240.00	6139.52				MinPt-O-ADP	
	1640.70	410.11	1366.76	1230.60	6.02	OSF1.50	7760.00	6818.25				MinPt-CtCt	
Detienne 17-12 Blind 0' to 7308' - PR (Def Survey)	1640.71	410.13	1366.75	1230.58	6.02	OSF1.50	7770.00	6818.25				MinPts	
	1640.77	410.15	1366.80	1230.62	6.02	OSF1.50	7780.00	6818.26				MinPt-O-SF	
	9486.00	408.99	9212.80	9077.01	34.92	OSF1.50	17107.56	6823.14				TD	
													Pass
	1869.53	32.81	1867.72	1836.72	N/A	MAS = 10.00 (m)	0.00	0.00				Surface	
	1869.48	32.81	1867.54	1836.67	14837.46	MAS = 10.00 (m)	20.00	20.00				WRP	
	1822.11	160.45	1714.61	1661.66	17.19	OSF1.50	2740.00	2702.00				MinPt-CtCt	
	1863.51	283.12	1674.24	1580.40	9.92	OSF1.50	4820.00	4744.87				MINPT-O-EOU	
	1919.36	349.91	1685.56	1569.45	8.26	OSF1.50	5950.00	5854.70				MinPt-O-ADP	
	1700.19	409.82	1426.44	1290.36	6.24	OSF1.50	7740.00	6818.24				MinPt-CtCt	
Boreen 1 Blind 0' to 7244' - SI (Def Survey)	1700.19	409.84	1426.43	1290.35	6.24	OSF1.50	7750.00	6818.24				MinPts	
													Pass

...Bost Farm 30N-11A-L\Original Hole\Bost Farm 30N-11A-L R1 mdv 13June19

Offset Trajectory	Separation			Allow Dev. (ft)	Sep. Fact.	Controlling Rule	Reference Trajectory		Risk Level			Alert	Status
	Ct-Ct (ft)	MAS (ft)	EOU (ft)				MD (ft)	TVD (ft)	Alert	Minor	Major		
Sheep 7-12 GYRO 0' to 7436' - PR (Def Survey)	1700.25	408.86	1426.47	1290.39	6.24	OSF1.50	7760.00	6818.25				MinPt-O-SF	
	9515.89	408.91	9242.75	9106.98	35.04	OSF1.50	17107.56	6823.14				TD	
													Pass
	3151.88	32.81	3150.07	3119.07	N/A	MAS = 10.00 (m)	0.00	0.00				Surface	
	3151.87	32.81	3150.06	3119.06	675912.49	MAS = 10.00 (m)	10.00	10.00				MinPts	
	3151.87	32.81	3150.03	3119.07	112139.16	MAS = 10.00 (m)	20.00	20.00				WRP	
	3151.95	32.81	3149.99	3119.14	20906.01	MAS = 10.00 (m)	60.00	60.00				MINPT-O-EOU	
	3152.45	32.81	3148.74	3119.64	1663.00	MAS = 10.00 (m)	450.00	449.84				MinPts	
	3153.11	32.81	3148.48	3120.30	1119.36	MAS = 10.00 (m)	620.00	618.97				MINPT-O-EOU	
	2949.47	47.33	2917.37	2902.14	96.79	OSF1.50	5440.00	5353.80				MinPt-CtCt	
	2949.59	47.69	2917.26	2901.91	96.03	OSF1.50	5500.00	5412.73				MINPT-O-EOU	
	2947.75	50.37	2913.61	2897.37	90.70	OSF1.50	6030.00	5933.27				MinPt-CtCt	
	1709.62	87.03	1651.07	1622.59	29.99	OSF1.50	9120.00	6818.96				MinPt-CtCt	
	1709.69	87.39	1650.90	1622.30	29.87	OSF1.50	9140.00	6818.97				MINPT-O-EOU	
	1709.81	87.56	1650.90	1622.25	29.81	OSF1.50	9150.00	6818.97				MinPt-O-ADP	
	1748.34	92.43	1686.19	1655.91	28.85	OSF1.50	9490.00	6819.15				MinPt-O-SF	
	8164.25	77.13	8112.29	8087.12	162.11	OSF1.50	17107.56	6823.14				TD	
Skyway 6-11 GYRO 0' to 7640' - PR (Def Survey)													Pass
	10908.45	32.81	10886.70	10875.64	546.91	MAS = 10.00 (m)	0.00	0.00				Surface	
	10900.07	32.81	10878.22	10867.27	543.81	MAS = 10.00 (m)	20.00	20.00				WRP	
	1713.60	252.81	1544.53	1460.80	10.22	OSF1.50	15650.00	6822.38				MinPt-CtCt	
	1713.76	253.19	1544.43	1460.57	10.21	OSF1.50	15670.00	6822.39				MINPT-O-EOU	
	1713.92	253.37	1544.47	1460.55	10.20	OSF1.50	15680.00	6822.39				MinPt-O-ADP	
	1718.01	254.60	1547.74	1463.41	10.18	OSF1.50	15770.00	6822.44				MinPt-O-SF	
	2251.59	217.87	2105.81	2033.72	15.61	OSF1.50	17107.56	6823.14				TD	
Skyway 5-11 GYRO 0' to 7350' - PR (Def Survey)													Pass
	11118.49	32.81	11116.56	11085.68	93279.28	MAS = 10.00 (m)	0.00	0.00				Surface	
	11118.46	32.81	11116.47	11085.65	63113.09	MAS = 10.00 (m)	20.00	20.00				WRP	
	11118.23	32.81	11115.77	11085.42	17150.88	MAS = 10.00 (m)	190.00	190.00				MinPts	
	10980.57	32.81	10968.89	10947.76	1094.67	MAS = 10.00 (m)	2030.00	2004.67				MinPt-O-SF	
	1771.48	286.01	1580.27	1485.47	9.33	OSF1.50	17107.56	6823.14				MinPts	
Detienne 24-12 GYRO 0' to 7305' - PR (Def Survey)													Pass
	1891.23	32.81	1889.42	1858.42	N/A	MAS = 10.00 (m)	0.00	0.00				Surface	
	1891.20	32.81	1889.37	1858.40	88676.49	MAS = 10.00 (m)	20.00	20.00				WRP	
	1891.15	32.81	1888.99	1858.34	5551.18	MAS = 10.00 (m)	120.00	120.00				MinPts	
	1891.29	32.81	1888.86	1858.48	3044.79	MAS = 10.00 (m)	190.00	190.00				MINPT-O-EOU	
	1881.87	32.81	1875.26	1849.06	392.04	MAS = 10.00 (m)	970.00	963.59				MinPts	
	1881.99	32.81	1875.12	1849.18	371.75	MAS = 10.00 (m)	1010.00	1002.88				MINPT-O-EOU	
	2780.87	47.29	2748.80	2733.57	91.25	OSF1.50	5990.00	5893.98				MinPt-O-SF	
	2137.37	75.42	2086.56	2061.95	43.40	OSF1.50	8540.00	6818.65				MinPt-CtCt	
	2137.49	75.79	2086.43	2061.70	43.19	OSF1.50	8560.00	6818.66				MINPT-O-EOU	
	2137.79	76.16	2086.48	2061.63	42.98	OSF1.50	8580.00	6818.67				MinPt-O-ADP	
	2240.56	85.65	2182.92	2154.91	39.98	OSF1.50	9210.00	6819.00				MinPt-O-SF	
	8832.10	82.77	8776.39	8749.34	163.20	OSF1.50	17107.56	6823.14				TD	
Skyway 22-11 - Plan (Def Plan)													Pass
	11115.64	32.81	11113.71	11082.83	102093.48	MAS = 10.00 (m)	0.00	0.00				Surface	
	11115.64	32.81	11113.67	11082.83	72501.17	MAS = 10.00 (m)	20.00	20.00				WRP	
	2282.27	266.13	2104.32	2016.15	12.93	OSF1.50	16260.00	6822.70				MinPt-CtCt	
	2282.50	266.78	2104.14	2015.76	12.90	OSF1.50	16290.00	6822.71				MINPT-O-EOU	
	2282.66	266.93	2104.18	2015.73	12.90	OSF1.50	16300.00	6822.72				MinPt-O-ADP	
	2292.11	269.44	2111.95	2022.67	12.83	OSF1.50	16470.00	6822.81				MinPt-O-SF	
	2435.33	266.88	2256.88	2168.45	13.76	OSF1.50	17107.56	6823.14				TD	
Sheep 9-12 GYRO 0' to 7441' - PR (Def Survey)													Pass
	3113.35	32.81	3111.54	3080.54	N/A	MAS = 10.00 (m)	0.00	0.00				Surface	
	3113.34	32.81	3111.53	3080.53	708924.83	MAS = 10.00 (m)	10.00	10.00				MinPts	
	3113.35	32.81	3111.51	3080.54	117210.49	MAS = 10.00 (m)	20.00	20.00				WRP	
	3113.41	32.81	3111.48	3080.60	27220.95	MAS = 10.00 (m)	50.00	50.00				MINPT-O-EOU	
	3115.56	32.81	3111.16	3082.76	1201.50	MAS = 10.00 (m)	530.00	529.55				MINPT-O-EOU	
	3123.32	32.81	3114.49	3090.51	444.82	MAS = 10.00 (m)	1320.00	1307.35				MINPT-O-EOU	
	3003.77	32.81	2982.41	2970.96	151.99	MAS = 10.00 (m)	4100.00	4037.72				MinPts	
	3003.86	32.81	2982.35	2971.05	150.86	MAS = 10.00 (m)	4130.00	4067.19				MINPT-O-EOU	
	3016.04	60.85	2974.94	2955.20	76.33	OSF1.50	7850.00	6818.29				MinPt-CtCt	
	3016.21	61.28	2974.82	2954.93	75.78	OSF1.50	7880.00	6818.31				MINPT-O-EOU	
	3016.33	61.42	2974.85	2954.91	75.60	OSF1.50	7890.00	6818.31				MinPt-O-ADP	
	3334.39	79.56	3280.82	3254.84	64.13	OSF1.50	9270.00	6819.04				MinPt-O-SF	
	9737.47	92.70	9675.14	9644.78	160.32	OSF1.50	17107.56	6823.14				TD	
Sheep 10-12 GYRO 0' to 7371' - PR (Def Survey)													Pass
	3154.84	32.81	3153.03	3122.03	N/A	MAS = 10.00 (m)	0.00	0.00				Surface	
	3154.83	32.81	3152.99	3122.02	123632.72	MAS = 10.00 (m)	20.00	20.00				WRP	
	3154.34	32.81	3150.82	3121.53	1847.72	MAS = 10.00 (m)	420.00	419.90				MinPts	
	3155.10	32.81	3150.54	3122.29	1146.11	MAS = 10.00 (m)	630.00	628.89				MINPT-O-EOU	
	3155.26	32.81	3147.21	3122.45	505.56	MAS = 10.00 (m)	1280.00	1268.06				MinPts	
	3155.47	32.81	3146.84	3122.66	462.49	MAS = 10.00 (m)	1380.00	1366.28				MINPT-O-EOU	
	3808.00	38.29	3781.94	3769.71	155.63	OSF1.50	5690.00	5599.34				MinPts	
	3038.57	82.96	2982.73	2955.62	56.00	OSF1.50	9100.00	6818.95				MinPt-CtCt	
	3038.86	83.81	2982.45	2955.05	55.42	OSF1.50	9140.00	6818.97				MINPT-O-EOU	
	3039.20	84.24	2982.51	2954.96	55.14	OSF1.50	9160.00	6818.98				MinPt-O-ADP	
	3267.46	103.14	3198.17	3164.32	48.25	OSF1.50	10300.00	6819.58				MinPt-O-SF	
	8565.52	105.43	8494.69	8460.08	123.72	OSF1.50	17107.56	6823.14				TD	
Sheep 16-12 GYRO 0' to 7793' - PR (Def Survey)													Pass
	3117.97	32.81	3116.16	3085.16	N/A	MAS = 10.00 (m)	0.00	0.00				Surface	
	3117.96	32.81	3116.14	3085.15	936648.17	MAS = 10.00 (m)	10.00	10.00				MinPts	
	3117.97	32.81	3116.13	3085.16	149580.71	MAS = 10.00 (m)	20.00	20.00				WRP	
	3117.99	32.81	3116.13	3085.18	70572.54	MAS = 10.00 (m)	30.00	30.00				MINPT-O-EOU	
	3121.05	32.81	3114.92	3088.24	722.46	MAS = 10.00 (m)	900.00	894.84				MinPts	
	3121.19	32.81	3114.76	3088.38	676.58	MAS = 10.00 (m)	960.00	953.77				MINPT-O-EOU	
	4181.03	47.02	4149.14	4134.00	138.03	OSF1.50	5750.00	5658.27				MinPt-O-SF	
	4393.19	58.63	4353.57	4334.57	115.52	OSF1.50	6270.00	6168.99				MinPts	
	4422.10	60.36	4381.32	4361.73	112.85	OSF1.50	6470.00	6363.87				MinPt-O-SF	
	4424.30	60.38	4383.51	4363.99	112.89	OSF1.50	6510.00	6401.46				MinPt-O-SF	
	4337.38	66.51	4292.51	4270.87	100.20	OSF1.50	7830.00	6818.28				MinPt-CtCt	

...Bost Farm 30N-11A-L\Original Hole\Bost Farm 30N-11A-L R1 mdv 13June19

Offset Trajectory	Separation			Allow Dev. (ft)	Sep. Fact.	Controlling Rule	Reference Trajectory		Risk Level			Alert	Status
	Ct-Ct (ft)	MAS (ft)	EOU (ft)				MD (ft)	TVD (ft)	Alert	Minor	Major		
	4337.49	66.83	4292.40	4270.66	99.72	OSF1.50	7860.00	6818.30				MINPT-O-EOU	
	4337.68	67.04	4292.45	4270.64	99.40	OSF1.50	7880.00	6818.31				MinPt-O-ADP	
	5125.36	101.68	5057.04	5023.69	76.80	OSF1.50	10560.00	6819.71				MinPt-O-SF	
	10100.46	108.43	10027.64	9992.03	141.80	OSF1.50	17107.56	6823.14				TD	
Sheep 15-12 GYRO 0' to 7701' - PR (Def Survey)													
	3164.47	32.81	3162.65	3131.66	N/A	MAS = 10.00 (m)	0.00	0.00				Pass	
	3164.45	32.81	3162.61	3131.65	116079.86	MAS = 10.00 (m)	20.00	20.00				Surface	
	3164.34	32.81	3161.70	3131.53	3831.52	MAS = 10.00 (m)	230.00	230.00				WRP	
	3161.70	32.81	3155.66	3128.89	746.64	MAS = 10.00 (m)	940.00	934.13				MinPts	
	3161.79	32.81	3155.53	3128.98	709.71	MAS = 10.00 (m)	980.00	973.42				MINPT-O-EOU	
	4832.12	43.28	4802.73	4788.83	173.84	OSF1.50	6440.00	6335.21				MinPt-O-SF	
	4327.72	86.93	4269.23	4240.79	76.06	OSF1.50	9080.00	6818.94				MinPt-CtCt	
	4328.19	88.21	4268.85	4239.98	74.93	OSF1.50	9140.00	6818.97				MINPT-O-EOU	
	4328.74	88.86	4268.97	4239.89	74.39	OSF1.50	9170.00	6818.98				MinPt-O-ADP	
	4870.43	125.92	4785.94	4744.50	58.75	OSF1.50	11310.00	6820.10				MinPt-O-SF	
	9123.56	144.54	9026.67	8979.03	95.73	OSF1.50	17107.56	6823.14				TD	
Sheep 20-12 GYRO 0' to 7464' - PR (Def Survey)													
	3178.25	32.81	3176.44	3145.44	N/A	MAS = 10.00 (m)	0.00	0.00				Pass	
	3178.24	32.81	3176.42	3145.43	704827.34	MAS = 10.00 (m)	10.00	10.00				Surface	
	3178.24	32.81	3176.40	3145.43	117034.16	MAS = 10.00 (m)	20.00	20.00				MinPts	
	3178.34	32.81	3176.34	3145.53	11759.32	MAS = 10.00 (m)	70.00	70.00				WRP	
	3180.84	32.81	3176.61	3148.03	1316.97	MAS = 10.00 (m)	490.00	489.72				MINPT-O-EOU	
	3180.96	32.81	3176.61	3148.15	1254.23	MAS = 10.00 (m)	510.00	509.64				MINPT-O-EOU	
	3182.35	32.81	3176.21	3149.54	735.74	MAS = 10.00 (m)	800.00	796.63				MINPT-O-EOU	
	3966.96	46.09	3935.70	3920.87	133.70	OSF1.50	5540.00	5452.02				MinPts	
	3679.89	72.85	3630.79	3607.05	77.45	OSF1.50	8490.00	6818.63				MinPt-CtCt	
	3680.17	73.73	3630.49	3606.45	76.51	OSF1.50	8540.00	6818.65				MINPT-O-EOU	
	3680.47	74.08	3630.55	3606.40	76.14	OSF1.50	8560.00	6818.66				MinPt-O-ADP	
	4112.10	100.67	4044.45	4011.43	62.24	OSF1.50	10330.00	6819.59				MinPt-O-SF	
	9364.76	117.13	9286.13	9247.63	121.57	OSF1.50	17107.56	6823.14				TD	