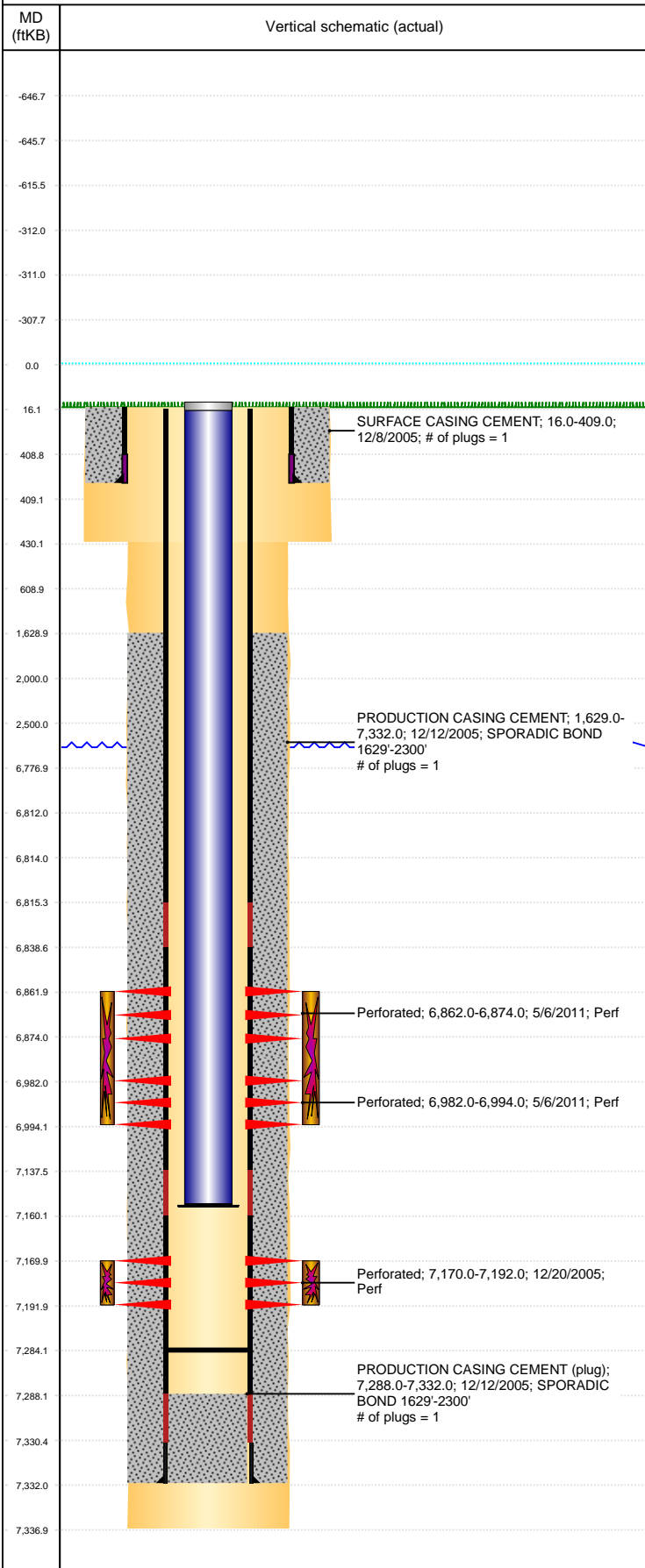


Well Name: RAGAN N14-17

VERTICAL, ORIGINAL HOLE, 6/17/2019 11:29:57 AM



Well Header

API 05-123-23316	Business Unit DJ BASIN	District 15	Well Config VERTICAL
KB - GL / MSL (ft...) 16.00	Spud Date 12/7/2005	P & A Date	Well Production Status PR
Comment			

Surface Location (Congressional)

Qtr 3 C	Qtr 4 NE	Section 14	Twonshp 5	Twonsh... N	Range 67	Rng E... W	Actual Latitude (°) 40.40306017	Actual Longitude (°) -104.85567475
------------	-------------	---------------	--------------	----------------	-------------	---------------	------------------------------------	---------------------------------------

Wellbore Sections

Section Des	Size (in)	Act Top, MD (ftKB)	Act Btm, MD (ftKB)
SURFACE	12 1/4	16	430
PRODUCTION	7 7/8	430	7,337

Casing Strings

Csg Des	Run Date	OD (in)	Wt/Len (lb/ft)	Grade	Top, MD (ftKB)	MD (ftKB)
Surface	12/8/2005	8 5/8	24.00	J-55	16.0	409.0
Production	12/12/2005	4 1/2	11.60	M-80	16.1	7,332.0

Cement

Des	Start Date	Top (ftKB)	Btm (ftKB)
SURFACE CASING CEMENT	12/8/2005	16.0	409.0
PRODUCTION CASING CEMENT	12/12/2005	1,629.0	7,332.0

Zone Statuses

Zone Name	Status Date	Status	Fluid Type	Job	Prod Method
CODELL	12/3/2009	PR	Water	RE-FRAC & RECOMPLETE, 4/28/2011 06:30	Flowing
CODELL	5/7/2011	PR	Water		Flowing
NIOBRARA	12/3/2009	PR	Water	RE-FRAC & RECOMPLETE, 4/28/2011 06:30	Flowing
NIOBRARA	5/7/2011	PR	Water		Flowing

Perforation Data

Linked Zone	Bnch/Stg	Entered Shot Total	Top (ftKB)	Btm (ftKB)	Date
NIOBRARA, ORIGINAL HOLE	A	24	6,862.00	6,874.00	5/6/2011
NIOBRARA, ORIGINAL HOLE	B	24	6,982.00	6,994.00	5/6/2011
CODELL, ORIGINAL HOLE		88	7,170.00	7,192.00	12/20/2005

Stimulation Intervals

Zone	Start Date	Top (ftKB)	Btm (ftKB)
NIOBRARA, ORIGINAL HOLE	5/6/2011	6,862.0	6,994.0
CODELL, ORIGINAL HOLE	1/11/2006	7,170.0	7,192.0
CODELL, ORIGINAL HOLE	5/6/2011	7,170.0	7,192.0

Other In Hole

Run Date	Des	OD (in)	Top (ftKB)	Btm (ftKB)

Logs

Date	Type	Top, MD (ftKB)	Btm, MD (ftKB)
12/12/2005	COMPENSATED DENSITY	3,550.0	7,337.0
12/12/2005	INDUCTION	410.0	7,337.0
12/19/2005	CBL/CCL/GR	1,500.0	7,265.0
5/23/2017	GYRO	0.0	7,100.0

Plug Back Total Depths

Date	Type	Com	Depth (ftKB)
12/19/2005		DEPTH LOGGER	7,265.0
5/19/2011	PLUG REMNANTS	DRILL 2 COMPOSITE PLUGS W/ VAREL ROCK BIT, PUMP OF...	7,284.0