



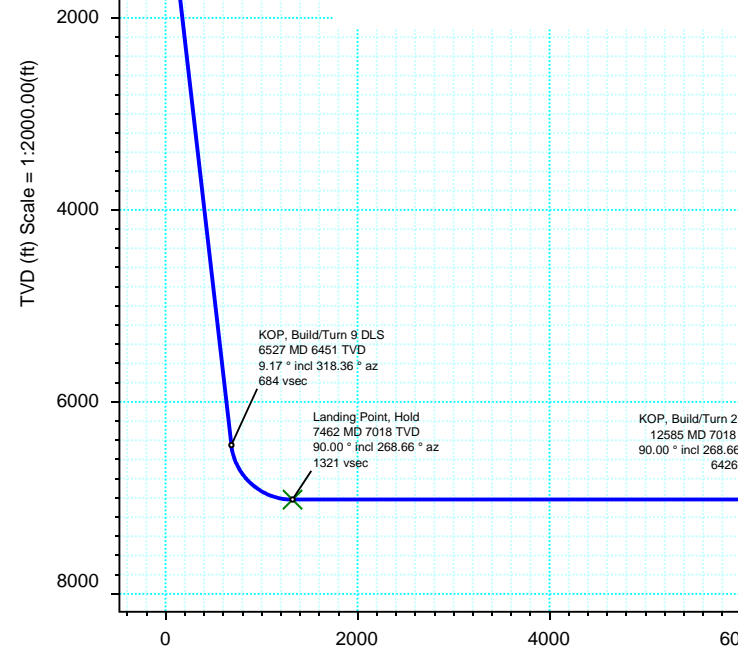
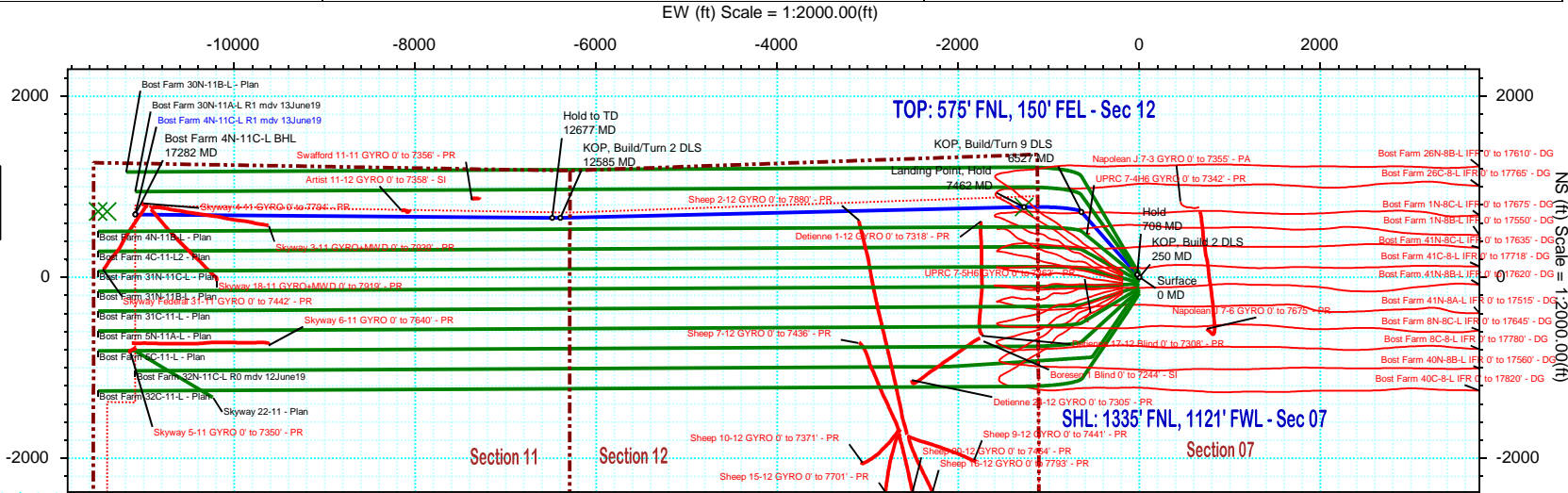
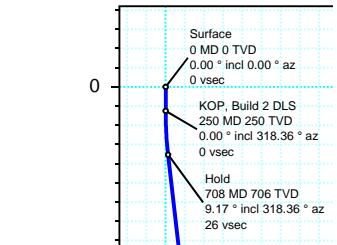
<b>Borehole:</b> Original Hole	<b>Well:</b> Bost Farm 4N-11C-L	<b>Field:</b> CO, Weld County (NAD 83 NZ) - SRC	<b>Structure:</b> SRC Energy 07-05N-66W (Bost Farm 5-7 Pad DSU 22)
-----------------------------------	------------------------------------	--	---

<b>Gravity &amp; Magnetic Parameters</b>		<b>Surface Location</b> NAD83 Colorado State Plane, Northern Zone, US Feet			<b>Miscellaneous</b>	
Model: HDGM 2019	Dip: 66.779°	Date: 13-Jun-2019	Lat: N 40 25 4.30	Northing: 1395775.69ftUS	Grid Conv: 0.434°	Slot: Bost Farm 4N-11C-L
MagDec: 8.249°	FS: 52220.021nT	Gravity FS: 999.026mgn (9.80665 Based)	Lon: W 104 49 42.11	Easting: 3187006.79ftUS	Scale Fact: 0.99996109	TVD Ref: KB 20ft(4898ft above MSL)
						Plan: Bost Farm 4N-11C-L R1 mdv 13June19

### Proposal



True North  
Tot Corr (M->T 8.249°)  
Mag Dec (8.249°)  
Grid Conv (0.434°)



Target Description		Surface Location				Local Coord			
Target Name	Latitude	Longitude	Northing	Easting	TVD	VSec	N(+)/S(-)	E(+)/W(-)	DLS
Bost Farm 5-7 Pad DSU 22 - Sec 12-11	N 40 24 50.94	W 104 49 41.85	1394423.60	3187036.52	4898.00	-103.82	-1352.33	19.49	
Bost Farm 5-7 Pad DSU 22 - Sec 12-11 - CL	N 40 24 50.94	W 104 49 41.85	1394423.60	3187036.52	4898.00	-103.82	-1352.33	19.49	
Bost Farm 5-7 Pad DSU 22 - Sec 12-11 - HL	N 40 25 2.72	W 104 49 42.12	1395615.75	3187006.61	4898.00	-8.59	-159.93	-1.39	
Bost Farm 4N-11C-L BPZ	N 40 25 11.43	W 104 52 9.54	1396413.61	3175598.85	7018.00	11426.22	724.34	-11403.24	
Bost Farm 4N-11C-L TOP	N 40 25 11.96	W 104 49 58.59	1396540.90	3185726.03	7018.00	1320.84	774.93	-1274.98	
Bost Farm 4N-11C-L BHL	N 40 25 11.43	W 104 52 10.83	1396412.53	3175498.90	7018.00	11525.96	724.02	-11503.20	

Critical Points									
Critical Point	MD	INCL	AZIM	TVD	VSEC	N(+)/S(-)	E(+)/W(-)	DLS	
Surface	0.00	0.00	0.00	0.00	0.00	0.00	0.00		
KOP, Build 2 DLS	250.00	0.00	318.36	250.00	0.00	0.00	0.00	0.00	
Hold	708.28	9.17	318.36	706.33	25.96	27.33	-24.31	2.00	
KOP, Build/Turn 9 DLS	6527.50	9.17	318.36	6451.25	683.94	720.02	-640.27	0.00	
Landing Point, Hold	7461.79	90.00	268.66	7018.00	1320.82	774.89	-1274.96	9.00	
KOP, Build/Turn 2 DLS	12585.41	90.00	268.66	7018.00	6425.55	654.72	-6397.17	0.00	
Hold to TD	12677.11	90.00	270.49	7018.00	6517.03	654.03	-6488.86	2.00	
Bost Farm 4N-11C-L BHL	17281.61	90.00	270.49	7018.00	11114.84	693.41	-11093.19	0.00	



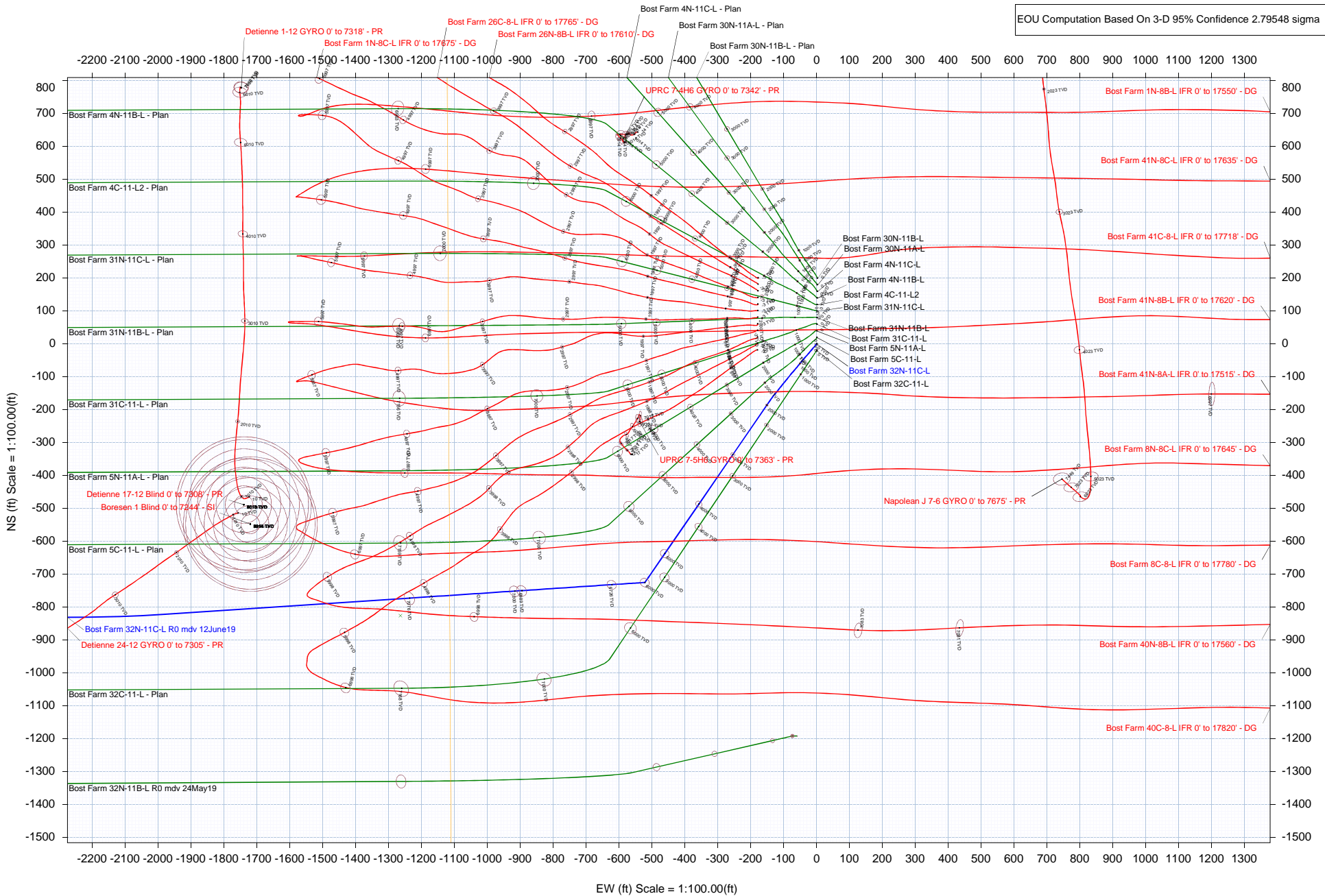
# SRC Energy



<b>Borehole:</b>		<b>Well:</b>		<b>Field:</b>		<b>Structure:</b>									
Original Hole		Bost Farm 32N-11C-L		CO, Weld County (NAD 83 NZ) - SRC		SRC Energy 07-05N-66W (Bost Farm 5-7 Pad DSU 22)									
<b>Gravity &amp; Magnetic Parameters</b>				<b>Surface Location</b>				<b>Miscellaneous</b>							
Model:	HDGM 2019	Dip:	66.775°	Date:	12-Jun-2019	Lat:	N 40 25 2.72	Northing:	1395615.7510US	Grid Conv:	0.434°	Slot:	Bost Farm 32N-11C-L	TVD Ref:	KB 20ft(4898ft above MSL)
MagDec:	8.243°	FS:	52212.964mT	Gravity FS:	999.025mgm (9.80665 Based)	Lon:	W 104 49 42.12	Easting:	3187006.6110US	Scale Fact:	0.99996107	Plan:	Bost Farm 32N-11C-L R0 mdv 12June19		

True North  
 Tot Corr (M->T 8.243°)  
 Mag Dec (8.243°)  
 Grid Conv (0.434°)

EOU Computation Based On 3-D 95% Confidence 2.79548 sigma





# SRC Energy

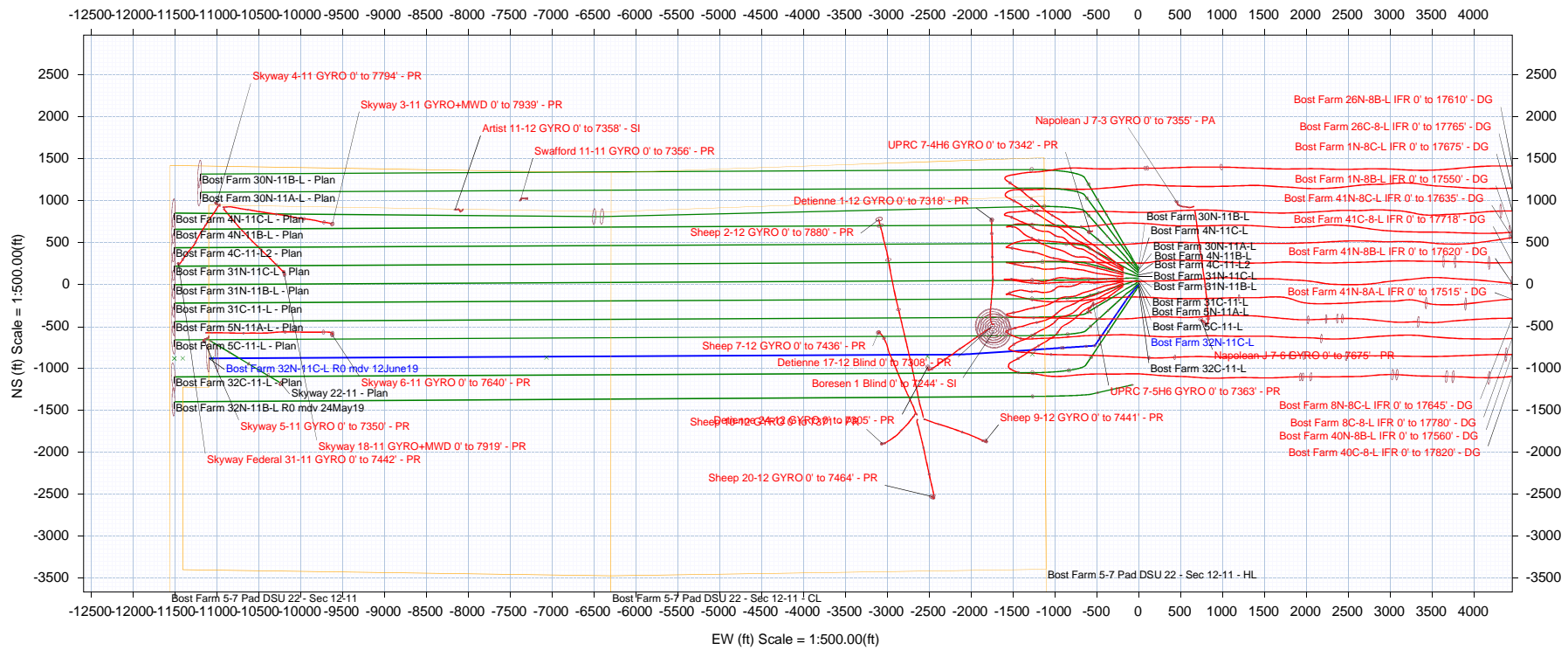


True North  
Grid  
Mag

True North  
Tot Corr (M->T 8.243°)  
Mag Dec (8.243°)  
Grid Conv (0.434°)

<b>Borehole:</b>		<b>Well:</b>		<b>Field:</b>		<b>Structure:</b>									
Original Hole		Bost Farm 32N-11C-L		CO, Weld County (NAD 83 NZ) - SRC		SRC Energy 07-05N-66W (Bost Farm 5-7 Pad DSU 22)									
<b>Gravity &amp; Magnetic Parameters</b>				<b>Surface Location</b>				<b>Miscellaneous</b>							
Model:	HDGM 2019	Dip:	66.775°	Date:	12-Jun-2019	Lat:	N 40 25 2.72	Northing:	1395615.75ftUS	Grid Conv:	0.434°	Slot:	Bost Farm 32N-11C-L	TVD Ref:	KB 20ft(4698ft above MSL)
MagDec:	8.243°	FS:	52212.964mT	Gravity FS:	999.025mgm (9.80665 Based)	Lon:	W 104 49 42.12	Easting:	3187006.61ftUS	Scale Fact:	0.99996107	Plan:	Bost Farm 32N-11C-L R0 mdv 12June19		

EOU Computation Based On 3-D 95% Confidence 2.79548 sigma



# Bost Farm 4N-11C-L R1 mdv 13June19 Proposal Geodetic Report

(Def Plan)

**Report Date:** June 13, 2019 - 08:32 AM  
**Client:** SRC Energy  
**Field:** CO, Weld County (NAD 83 NZ) - SRC  
**Structure / Slot:** SRC Energy 07-05N-66W (Bost Farm 5-7 Pad DSU 22) / Bost Farm 4N-11C-L  
**Well:** Bost Farm 4N-11C-L  
**Borehole:** Original Hole  
**UWI / API#:** Unknown / 05-123-47658  
**Survey Name:** Bost Farm 4N-11C-L R1 mdv 13June19  
**Survey Date:** May 20, 2019  
**Tort / AHD / DDI / ERD Ratio:** 95.086 ° / 11425.330 ft / 6.427 / 1.628  
**Coordinate Reference System:** NAD83 Colorado State Plane, Northern Zone, US Feet  
**Location Lat / Long:** N 40° 25' 4.30320", W 104° 49' 42.10680"  
**Location Grid N/E Y/X:** N 1395775.687 ftUS, E 3187006.786 ftUS  
**CRS Grid Convergence Angle:** 0.4340 °  
**Grid Scale Factor:** 0.99996109  
**Version / Patch:** 2.10.760.0

**Survey / DLS Computation:** Minimum Curvature / Lubinski  
**Vertical Section Azimuth:** 273.577 ° (True North)  
**Vertical Section Origin:** 0.000 ft, 0.000 ft  
**TVD Reference Datum:** KB 20ft  
**TVD Reference Elevation:** 4898.000 ft above MSL  
**Seabed / Ground Elevation:** 4878.000 ft above MSL  
**Magnetic Declination:** 8.249 °  
**Total Gravity Field Strength:** 999.0262mgn (9.80665 Based)  
**Gravity Model:** GARM  
**Total Magnetic Field Strength:** 52220.021 nT  
**Magnetic Dip Angle:** 66.779 °  
**Declination Date:** June 13, 2019  
**Magnetic Declination Model:** HDGM 2019  
**North Reference:** True North  
**Grid Convergence Used:** 0.0000 °  
**Total Corr Mag North-True North:** 8.2490 °  
**Local Coord Referenced To:** Well Head

Comments	MD (ft)	Incl (°)	Azim True (°)	TVD (ft)	VSEC (ft)	NS (ft)	EW (ft)	DLS (°/100ft)	Northing (ftUS)	Easting (ftUS)	Latitude (°)	Longitude (°)
Surface	0.00	0.00	0.00	0.00	0.00	0.00	0.00	N/A	1395775.69	3187006.79	40.417862	-104.828363
	100.00	0.00	318.36	100.00	0.00	0.00	0.00	0.00	1395775.69	3187006.79	40.417862	-104.828363
	200.00	0.00	318.36	200.00	0.00	0.00	0.00	0.00	1395775.69	3187006.79	40.417862	-104.828363
KOP, Build 2 DLS	250.00	0.00	318.36	250.00	0.00	0.00	0.00	0.00	1395775.69	3187006.79	40.417862	-104.828363
	300.00	1.00	318.36	300.00	0.31	0.33	-0.29	2.00	1395776.01	3187006.49	40.417863	-104.828364
	400.00	3.00	318.36	399.93	2.79	2.93	-2.61	2.00	1395778.60	3187004.16	40.417870	-104.828372
	500.00	5.00	318.36	499.68	7.74	8.15	-7.24	2.00	1395783.78	3186999.48	40.417884	-104.828389
	600.00	7.00	318.36	599.13	15.16	15.96	-14.19	2.00	1395791.54	3186992.48	40.417906	-104.828414
	700.00	9.00	318.36	698.15	25.04	26.36	-23.44	2.00	1395801.86	3186983.15	40.417934	-104.828447
Hold	708.28	9.17	318.36	706.33	25.96	27.33	-24.31	2.00	1395802.83	3186982.27	40.417937	-104.828450
	800.00	9.17	318.36	796.88	36.33	38.25	-34.01	0.00	1395813.68	3186972.48	40.417967	-104.828485
	900.00	9.17	318.36	895.60	47.64	50.15	-44.60	0.00	1395825.50	3186961.81	40.418000	-104.828523
	1000.00	9.17	318.36	994.32	58.95	62.06	-55.18	0.00	1395837.32	3186951.14	40.418032	-104.828561
	1100.00	9.17	318.36	1093.05	70.26	73.96	-65.77	0.00	1395849.15	3186940.46	40.418065	-104.828599
	1200.00	9.17	318.36	1191.77	81.56	85.87	-76.35	0.00	1395860.97	3186929.79	40.418098	-104.828637
	1300.00	9.17	318.36	1290.49	92.87	97.77	-86.94	0.00	1395872.79	3186919.11	40.418130	-104.828675
	1400.00	9.17	318.36	1389.22	104.18	109.67	-97.52	0.00	1395884.61	3186908.44	40.418163	-104.828713
	1500.00	9.17	318.36	1487.94	115.48	121.58	-108.11	0.00	1395896.43	3186897.76	40.418196	-104.828751
	1600.00	9.17	318.36	1586.66	126.79	133.48	-118.69	0.00	1395908.26	3186887.09	40.418228	-104.828789
	1700.00	9.17	318.36	1685.39	138.10	145.38	-129.28	0.00	1395920.08	3186876.42	40.418261	-104.828827
	1800.00	9.17	318.36	1784.11	149.40	157.29	-139.86	0.00	1395931.90	3186865.74	40.418294	-104.828865
	1900.00	9.17	318.36	1882.83	160.71	169.19	-150.45	0.00	1395943.72	3186855.07	40.418326	-104.828903
	2000.00	9.17	318.36	1981.56	172.02	181.09	-161.03	0.00	1395955.55	3186844.39	40.418359	-104.828941
	2100.00	9.17	318.36	2080.28	183.32	193.00	-171.62	0.00	1395967.37	3186833.72	40.418392	-104.828979
	2200.00	9.17	318.36	2179.00	194.63	204.90	-182.20	0.00	1395979.19	3186823.04	40.418424	-104.829017
	2300.00	9.17	318.36	2277.72	205.94	216.80	-192.79	0.00	1395991.01	3186812.37	40.418457	-104.829055
	2400.00	9.17	318.36	2376.45	217.25	228.71	-203.37	0.00	1396002.84	3186801.69	40.418490	-104.829093
	2500.00	9.17	318.36	2475.17	228.55	240.61	-213.96	0.00	1396014.66	3186791.02	40.418522	-104.829131
	2600.00	9.17	318.36	2573.89	239.86	252.51	-224.54	0.00	1396026.48	3186780.35	40.418555	-104.829169
	2700.00	9.17	318.36	2672.62	251.17	264.42	-235.13	0.00	1396038.30	3186769.67	40.418588	-104.829207
	2800.00	9.17	318.36	2771.34	262.47	276.32	-245.71	0.00	1396050.13	3186759.00	40.418620	-104.829245
	2900.00	9.17	318.36	2870.06	273.78	288.22	-256.30	0.00	1396061.95	3186748.32	40.418653	-104.829283
	3000.00	9.17	318.36	2968.79	285.09	300.13	-266.88	0.00	1396073.77	3186737.65	40.418686	-104.829321
	3100.00	9.17	318.36	3067.51	296.39	312.03	-277.47	0.00	1396085.59	3186726.97	40.418718	-104.829359
	3200.00	9.17	318.36	3166.23	307.70	323.93	-288.05	0.00	1396097.42	3186716.30	40.418751	-104.829398
	3300.00	9.17	318.36	3264.96	319.01	335.84	-298.64	0.00	1396109.24	3186705.63	40.418784	-104.829436
	3400.00	9.17	318.36	3363.68	330.31	347.74	-309.22	0.00	1396121.06	3186694.95	40.418817	-104.829474
	3500.00	9.17	318.36	3462.40	341.62	359.64	-319.81	0.00	1396132.88	3186684.28	40.418849	-104.829512
	3600.00	9.17	318.36	3561.13	352.93	371.55	-330.39	0.00	1396144.71	3186673.60	40.418882	-104.829550
	3700.00	9.17	318.36	3659.85	364.24	383.45	-340.98	0.00	1396156.53	3186662.93	40.418915	-104.829588
	3800.00	9.17	318.36	3758.57	375.54	395.35	-351.56	0.00	1396168.35	3186652.25	40.418947	-104.829626
	3900.00	9.17	318.36	3857.30	386.85	407.26	-362.15	0.00	1396180.17	3186641.58	40.418980	-104.829664
	4000.00	9.17	318.36	3956.02	398.16	419.16	-372.73	0.00	1396192.00	3186630.91	40.419013	-104.829702
	4100.00	9.17	318.36	4054.74	409.46	431.06	-383.32	0.00	1396203.82	3186620.23	40.419045	-104.829740
	4200.00	9.17	318.36	4153.47	420.77	442.97	-393.90	0.00	1396215.64	3186609.56	40.419078	-104.829778
	4300.00	9.17	318.36	4252.19	432.08	454.87	-404.49	0.00	1396227.46	3186598.88	40.419111	-104.829816
	4400.00	9.17	318.36	4350.91	443.38	466.77	-415.07	0.00	1396239.28	3186588.21	40.419143	-104.829854
	4500.00	9.17	318.36	4449.63	454.69	478.68	-425.66	0.00	1396251.11	3186577.53	40.419176	-104.829892
	4600.00	9.17	318.36	4548.36	466.00	490.58	-436.24	0.00	1396262.93	3186566.86	40.419209	-104.829930
	4700.00	9.17	318.36	4647.08	477.30	502.48	-446.83	0.00	1396274.75	3186556.18	40.419241	-104.829968
	4800.00	9.17	318.36	4745.80	488.61	514.39	-457.41	0.00	1396286.57	3186545.51	40.419274	-104.830006
	4900.00	9.17	318.36	4844.53	499.92	526.29	-468.00	0.00	1396298.40	3186534.84	40.419307	-104.830044
	5000.00	9.17	318.36	4943.25	511.23	538.20	-478.58	0.00	1396310.22	3186524.16	40.419339	-104.830082
	5100.00	9.17	318.36	5041.97	522.53	550.10	-489.17	0.00	1396322.04	3186513.49	40.419372	-104.830120
	5200.00	9.17	318.36	5140.70	533.84	562.00	-499.75	0.00	1396333.86	3186502.81	40.419405	-104.830158
	5300.00	9.17	318.36	5239.42	545.15	573.91	-510.34	0.00	1396345.69	3186492.14	40.419437	-104.830196
	5400.00	9.17	318.36	5338.14	556.45	585.81	-520.92	0.00	1396357.51	3186481.46	40.419470	-104.830234
	5500.00	9.17	318.36	5436.87	567.76	597.71	-531.51	0.00	1396369.33	3186470.79	40.419503	-104.830272
	5600.00	9.17	318.36	5535.59	579.07	609.62	-542.09	0.00	1396381.15	3186460.12	40.419535	-104.830310
	5700.00	9.17	318.36	5634.31	590.37	621.52	-552.68	0.00	1396392.98	3186449.44	40.419568	-104.830348
	5800.00	9.17	318.36	5733.04	601.68	633.42	-563.26	0.00	1396404.80	3186438.77	40.419601	-104.830386
	5900.00	9.17	318.36	5831.76	612.99	645.33	-573.85	0.00	1396416.62	3186428.09	40.419633	-104.830424
	6000.00	9.17	318.36	5930.48	624.29	657.23	-584.43	0.00	1396428.44	3186417.42	40.419666	-104.830462
	6100.00	9.17	318.36	6029.21	635.60	669.13	-595.02	0.00	1396440.27	3186406.74	40.419699	-104.830500
	6200.00	9.17	318.36	6127.93	646.91	681.04	-605.60	0.00	1396452.09	3186396.07	40.419731	-104.830538
	6300.00	9.17	318.36	6226.65	658.22	692.94	-616.19	0.00	1396463.91	3186385.39	40.419764	-104.830576
	6400.00	9.17	318.36	6325.38	669.52	704						

Comments	MD (ft)	Incl (°)	Azim True (°)	TVD (ft)	VSEC (ft)	NS (ft)	EW (ft)	DLS (°/100ft)	Northing (ftUS)	Easting (ftUS)	Latitude (°)	Longitude (°)
	7200.00	66.63	271.70	6965.32	1066.73	774.38	-1020.40	9.00	1396542.28	3185980.59	40.419988	-104.832028
	7300.00	75.55	270.47	6997.70	1161.14	776.15	-1114.89	9.00	1396543.34	3185886.10	40.419992	-104.832367
	7400.00	84.48	269.34	7015.03	1259.32	775.97	-1213.27	9.00	1396542.41	3185787.72	40.419992	-104.832720
Landring Point, Hold	7461.79	90.00	268.66	7018.00	1320.82	774.89	-1274.96	9.00	1396540.87	3185726.05	40.419989	-104.832942
	7500.00	90.00	268.66	7018.00	1358.89	773.99	-1313.16	0.00	1396539.68	3185687.86	40.419986	-104.833079
	7600.00	90.00	268.66	7018.00	1458.52	771.65	-1413.13	0.00	1396536.58	3185587.91	40.419980	-104.833438
	7700.00	90.00	268.66	7018.00	1558.15	769.30	-1513.10	0.00	1396533.48	3185487.96	40.419974	-104.833797
	7800.00	90.00	268.66	7018.00	1657.78	766.96	-1613.08	0.00	1396530.37	3185388.01	40.419967	-104.834156
	7900.00	90.00	268.66	7018.00	1757.41	764.61	-1713.05	0.00	1396527.27	3185288.07	40.419961	-104.834515
	8000.00	90.00	268.66	7018.00	1857.04	762.27	-1813.02	0.00	1396524.17	3185188.12	40.419954	-104.834874
	8100.00	90.00	268.66	7018.00	1956.68	759.92	-1912.99	0.00	1396521.07	3185088.17	40.419948	-104.835233
	8200.00	90.00	268.66	7018.00	2056.31	757.58	-2012.97	0.00	1396517.96	3184988.22	40.419941	-104.835592
	8300.00	90.00	268.66	7018.00	2155.94	755.23	-2112.94	0.00	1396514.86	3184888.28	40.419935	-104.835951
	8400.00	90.00	268.66	7018.00	2255.57	752.88	-2212.91	0.00	1396511.76	3184788.33	40.419928	-104.836311
	8500.00	90.00	268.66	7018.00	2355.20	750.54	-2312.88	0.00	1396508.66	3184688.38	40.419922	-104.836670
	8600.00	90.00	268.66	7018.00	2454.83	748.19	-2412.86	0.00	1396505.55	3184588.43	40.419915	-104.837029
	8700.00	90.00	268.66	7018.00	2554.46	745.85	-2512.83	0.00	1396502.45	3184488.48	40.419909	-104.837388
	8800.00	90.00	268.66	7018.00	2654.10	743.50	-2612.80	0.00	1396499.35	3184388.54	40.419902	-104.837747
	8900.00	90.00	268.66	7018.00	2753.73	741.16	-2712.77	0.00	1396496.25	3184288.59	40.419896	-104.838106
	9000.00	90.00	268.66	7018.00	2853.36	738.81	-2812.75	0.00	1396493.14	3184188.64	40.419890	-104.838465
	9100.00	90.00	268.66	7018.00	2952.99	736.47	-2912.72	0.00	1396490.04	3184088.69	40.419883	-104.838824
	9200.00	90.00	268.66	7018.00	3052.62	734.12	-3012.69	0.00	1396486.94	3183988.75	40.419877	-104.839183
	9300.00	90.00	268.66	7018.00	3152.25	731.77	-3112.66	0.00	1396483.84	3183888.80	40.419870	-104.839542
	9400.00	90.00	268.66	7018.00	3251.88	729.42	-3212.64	0.00	1396480.73	3183788.85	40.419864	-104.839901
	9500.00	90.00	268.66	7018.00	3351.52	727.08	-3312.61	0.00	1396477.63	3183688.90	40.419857	-104.840260
	9600.00	90.00	268.66	7018.00	3451.15	724.74	-3412.58	0.00	1396474.53	3183588.95	40.419851	-104.840619
	9700.00	90.00	268.66	7018.00	3550.78	722.39	-3512.55	0.00	1396471.43	3183489.01	40.419844	-104.840978
	9800.00	90.00	268.66	7018.00	3650.41	720.05	-3612.53	0.00	1396468.32	3183389.06	40.419838	-104.841337
	9900.00	90.00	268.66	7018.00	3750.04	717.70	-3712.50	0.00	1396465.22	3183289.11	40.419831	-104.841696
	10000.00	90.00	268.66	7018.00	3849.67	715.36	-3812.47	0.00	1396462.12	3183189.16	40.419825	-104.842055
	10100.00	90.00	268.66	7018.00	3949.30	713.01	-3912.44	0.00	1396459.02	3183089.22	40.419818	-104.842414
	10200.00	90.00	268.66	7018.00	4048.94	710.67	-4012.42	0.00	1396455.91	3182989.27	40.419812	-104.842773
	10300.00	90.00	268.66	7018.00	4148.57	708.32	-4112.39	0.00	1396452.81	3182889.32	40.419805	-104.843132
	10400.00	90.00	268.66	7018.00	4248.20	705.97	-4212.36	0.00	1396449.71	3182789.37	40.419799	-104.843491
	10500.00	90.00	268.66	7018.00	4347.83	703.63	-4312.33	0.00	1396446.61	3182689.42	40.419792	-104.843850
	10600.00	90.00	268.66	7018.00	4447.46	701.28	-4412.31	0.00	1396443.50	3182589.47	40.419786	-104.844209
	10700.00	90.00	268.66	7018.00	4547.09	698.94	-4512.28	0.00	1396440.40	3182489.53	40.419779	-104.844568
	10800.00	90.00	268.66	7018.00	4646.72	696.59	-4612.25	0.00	1396437.30	3182389.58	40.419773	-104.844927
	10900.00	90.00	268.66	7018.00	4746.36	694.25	-4712.22	0.00	1396434.20	3182289.63	40.419766	-104.845286
	11000.00	90.00	268.66	7018.00	4845.99	691.90	-4812.20	0.00	1396431.09	3182189.68	40.419760	-104.845645
	11100.00	90.00	268.66	7018.00	4945.62	689.56	-4912.17	0.00	1396427.99	3182089.74	40.419753	-104.846004
	11200.00	90.00	268.66	7018.00	5045.25	687.21	-5012.14	0.00	1396424.89	3181989.79	40.419747	-104.846363
	11300.00	90.00	268.66	7018.00	5144.88	684.86	-5112.11	0.00	1396421.79	3181889.84	40.419740	-104.846722
	11400.00	90.00	268.66	7018.00	5244.51	682.52	-5212.09	0.00	1396418.68	3181789.89	40.419734	-104.847081
	11500.00	90.00	268.66	7018.00	5344.14	680.17	-5312.06	0.00	1396415.58	3181689.95	40.419727	-104.847441
	11600.00	90.00	268.66	7018.00	5443.78	677.83	-5412.03	0.00	1396412.48	3181589.00	40.419721	-104.847800
	11700.00	90.00	268.66	7018.00	5543.41	675.48	-5512.00	0.00	1396409.38	3181489.05	40.419714	-104.848159
	11800.00	90.00	268.66	7018.00	5643.04	673.14	-5611.98	0.00	1396406.27	3181389.10	40.419708	-104.848518
	11900.00	90.00	268.66	7018.00	5742.67	670.79	-5711.95	0.00	1396403.17	3181289.16	40.419701	-104.848877
	12000.00	90.00	268.66	7018.00	5842.30	668.45	-5811.92	0.00	1396400.07	3181189.21	40.419695	-104.849236
	12100.00	90.00	268.66	7018.00	5941.93	666.10	-5911.89	0.00	1396396.97	3181089.26	40.419688	-104.849595
	12200.00	90.00	268.66	7018.00	6041.56	663.75	-6011.87	0.00	1396393.86	3180989.31	40.419682	-104.849954
	12300.00	90.00	268.66	7018.00	6141.20	661.41	-6111.84	0.00	1396390.76	3180889.36	40.419675	-104.850313
	12400.00	90.00	268.66	7018.00	6240.83	659.06	-6211.81	0.00	1396387.66	3180789.42	40.419669	-104.850672
	12500.00	90.00	268.66	7018.00	6340.46	656.72	-6311.78	0.00	1396384.56	3180689.47	40.419662	-104.851031
KOP, Build/Turn 2 DLS	12585.41	90.00	268.66	7018.00	6425.55	654.72	-6397.17	0.00	1396381.91	3180605.10	40.419657	-104.851390
Hold to TD	12600.00	90.00	268.95	7018.00	6440.09	654.41	-6411.76	2.00	1396381.49	3180590.52	40.419656	-104.851749
	12677.11	90.00	270.49	7018.00	6517.03	654.03	-6488.86	2.00	1396380.53	3180513.42	40.419655	-104.851667
	12700.00	90.00	270.49	7018.00	6539.88	654.23	-6511.75	0.00	1396380.55	3180490.53	40.419655	-104.851749
	12800.00	90.00	270.49	7018.00	6639.74	655.08	-6611.75	0.00	1396380.65	3180390.54	40.419658	-104.852109
	12900.00	90.00	270.49	7018.00	6739.59	655.94	-6711.74	0.00	1396380.75	3180290.54	40.419660	-104.852468
	13000.00	90.00	270.49	7018.00	6839.45	656.79	-6811.74	0.00	1396380.84	3180190.54	40.419662	-104.852827
	13100.00	90.00	270.49	7018.00	6939.30	657.65	-6911.74	0.00	1396380.94	3180090.55	40.419665	-104.853186
	13200.00	90.00	270.49	7018.00	7039.16	658.50	-7011.73	0.00	1396381.04	3179990.55	40.419667	-104.853545
	13300.00	90.00	270.49	7018.00	7139.01	659.36	-7111.73	0.00	1396381.14	3179890.56	40.419669	-104.853904
	13400.00	90.00	270.49	7018.00	7238.87	660.21	-7211.73	0.00	1396381.23	3179790.57	40.419671	-104.854263
	13500.00	90.00	270.49	7018.00	7338.72	661.07	-7311.72	0.00	1396381.33	3179690.57	40.419674	-104.854622
	13600.00	90.00	270.49	7018.00	7438.58	661.92	-7411.72	0.00	1396381.43	3179590.57	40.419676	-104.854981
	13700.00	90.00	270.49	7018.00	7538.43	662.78	-7511.72	0.00	1396381.53	3179490.57	40.419678	-104.855341
	13800.00	90.00	270.49	7018.00	7638.29	663.63	-7611.71	0.00	1396381.63	3179390.58	40.419680	-104.855700
	13900.00	90.00	270.49	7018.00	7738.14	664.49	-7711.71	0.00	1396381.72	3179290.58	40.419683	-104.856059
	14000.00	90.00	270.49	7018.00	7838.00	665.35	-7811.70	0.00	1396381.82	3179190.59	40.419685	-104.856418
	14100.00	90.00	270.49	7018.00	7937.85	666.20	-7911.70	0.00	1396381.92	3179090.59	40.419687	-104.856777
	14200.00	90.00	270.49	7018.00	8037.71	667.06	-8011.70	0.00	1396382.02	3178990.59	40.419689	-104.857136
	14300.00	90.00	270.49	7018.00	8137.56	667.91	-8111.69	0.00	1396382.11	3178890.60	40.419692	-104.857495
	14400.00	90.00	270.49	7018.00	8237.42	668.77	-8211.69	0.00	1396382.21	3178790.60	40.419694	-104.857854
	14500.00	90.00	270.49	7018.00	8337.27	669.62	-8311.69	0.00	1396382.31	3178690.61	40.419696	-104.858213
	14600.00	90										

Comments	MD (ft)	Incl (°)	Azim True (°)	TVD (ft)	VSEC (ft)	NS (ft)	EW (ft)	DLS (°/100ft)	Northing (ftUS)	Easting (ftUS)	Latitude (°)	Longitude (°)
----------	------------	-------------	------------------	-------------	--------------	------------	------------	------------------	--------------------	-------------------	-----------------	------------------

Survey Type: Def Plan

Survey Error Model: ISCWSA Rev 0 \*\*\* 3-D 95.000% Confidence 2.7955 sigma  
 Survey Program:

Description	Part	MD From (ft)	MD To (ft)	EOU Freq (ft)	Hole Size (in)	Casing Diameter (in)	Expected Max Inclination (deg)	Survey Tool Type	Borehole / Survey
	1	0.000	20.000	1/100.000	13.500	9.625	NAL_MWD_IFR1-Depth Only	Original Hole / Bost Farm 4N-11C-L R1 mdv 13June19	
	1	20.000	1800.000	1/100.000	13.500	9.625	NAL_MWD_IFR1	Original Hole / Bost Farm 4N-11C-L R1 mdv 13June19	
	1	1800.000	17281.610	1/100.000	8.500	5.500	NAL_MWD_IFR1+MS	Original Hole / Bost Farm 4N-11C-L R1 mdv 13June19	

## Bost Farm 4N-11C-L R1 mdv 13June19 Anti-Collision Summary Report

**Analysis Date-24hr Time:** June 13, 2019 - 08:32  
**Client:** SRC Energy  
**Field:** CO, Weld County (NAD 83 NZ) - SRC

**Analysis Method:** 3D Least Distance  
**Reference Trajectory:** Bost Farm 4N-11C-L R1 mdv 13June19 (Def Plan)  
**Depth Interval:** Every 10.00 Measured Depth (ft)

**Structure:** SRC Energy 07-05N-66W (Bost Farm 5-7 Pad DSU 22)  
**Slot:** Bost Farm 4N-11C-L  
**Well:** Bost Farm 4N-11C-L  
**Borehole:** Original Hole  
**Scan MD Range:** 0.00ft - 17281.61ft

**Rule Set:** D&M AntiCollision Standard S002 v5.1/5.2  
**Min Pts:** All local minima indicated.  
**Version / Patch:** 2.10.760.0  
**Database \ Project:** us1164app01\drilling-CO, Weld County 2.10

ISCSA0 3-D 95.000% Confidence 2.7955 sigma, for subject well. For offset wells, error model version is specified with each well respectively.

**Trajectory Error Model:**

**Offset Trajectories Summary**

**Offset Selection Criteria**

Wellhead distance scan: Restricted within 58292.11 ft  
 Selection filters: Definitive Surveys - Definitive Plans - Definitive surveys exclude definitive plans  
 - All Non-Def Surveys when no Def-Survey is set in a borehole - All Non-Def Plans when no Def-Plan is set in a borehole

Offset Trajectory	Separation			Allow Dev. (ft)	Sep. Fact.	Controlling Rule	Reference Trajectory		Risk Level			Alert	Status
	Ct-Ct (ft)	MAS (ft)	EOU (ft)				MD (ft)	TVD (ft)	Alert	Minor	Major		

Results highlighted: Sep-Factor separation <= 1.50 ft

Bost Farm 4N-11B-L - Plan (Def Plan)													Fail Major
20.04	16.22	19.05	3.82	N/A	MAS = 4.95 (m)	0.00	0.00						Enter Alert
20.04	16.22	19.05	3.82	N/A	MAS = 4.95 (m)	20.00	20.00						WRP
177.8	16.22	14.55	1.59	7.46	MAS = 4.95 (m)	430.00	429.88						MinPts
17.89	16.22	14.47	1.66	6.95	MAS = 4.95 (m)	460.00	459.81						MINPT-O-EOU
23.87	16.22	18.64	7.64	5.40	MAS = 4.95 (m)	730.00	727.77						MinPt-O-SF
45.52	16.22	36.62	29.30	5.62	MAS = 4.95 (m)	1510.00	1497.81						MinPt-O-SF
49.19	16.22	39.78	32.96	5.73	MAS = 4.95 (m)	1620.00	1606.41						Exit Alert
206.07	50.73	171.92	155.34	6.18	OSF1.50	6500.00	6424.10						MinPt-O-SF
219.69	66.60	174.96	153.09	5.00	OSF1.50	7870.00	7018.00			OSF<5.00			Enter Alert
164.39	164.50	54.39	-0.11	1.50	OSF1.50	11100.00	7018.00				OSF<1.50		Enter Minor
140.77	210.95	-0.19	-70.18	1.00	OSF1.50	12550.00	7018.00						Enter Major
139.81	213.83	-3.07	-74.02	0.98	OSF1.50	12640.00	7018.00						MinPt-CtCt
200.08	386.29	-57.78	-186.21	0.78	OSF1.50	17281.61	7018.00						MinPts

Artist 11-12 GYRO 0' to 7358' - SI (Def Survey)													Fail Major
8098.06	32.81	8095.81	8065.26	18426.50	MAS = 10.00 (m)	0.00	0.00						Surface
8097.87	32.81	8095.54	8065.06	15713.48	MAS = 10.00 (m)	20.00	20.00						WRP
241.88	79.08	186.15	162.80	4.99	OSF1.50	14100.00	7018.00			OSF<5.00			Enter Alert
122.24	124.05	36.75	-1.80	1.48	OSF1.50	14230.00	7018.00				OSF<1.50		Enter Minor
98.41	148.37	-3.07	-49.95	0.97	OSF1.50	14260.00	7018.00						Enter Major
66.38	209.94	-74.43	-143.56	0.48	OSF1.50	14330.00	7018.00						MinPts
94.43	155.72	-9.92	-61.29	0.90	OSF1.50	14400.00	7018.00					OSF>1.00	Exit Major
117.67	130.16	30.36	-12.49	1.35	OSF1.50	14430.00	7018.00				OSF>1.50		Exit Minor
255.85	77.99	203.32	177.86	4.99	OSF1.50	14580.00	7018.00			OSF<5.00			Exit Alert
2947.63	55.40	2910.16	2892.23	82.14	OSF1.50	17281.61	7018.00						TD

Skyway 4-11 GYRO 0' to 7794' - PR (Def Survey)													Fail Major
10981.92	32.81	10980.06	10949.11	236217.23	MAS = 10.00 (m)	0.00	0.00						MinPts
10981.93	32.81	10980.03	10949.12	123711.58	MAS = 10.00 (m)	20.00	20.00						WRP
10482.43	39.60	10455.36	10442.83	418.11	OSF1.50	5540.00	5476.36						MinPt-O-SF
349.22	115.27	268.54	233.95	4.88	OSF1.50	16870.00	7018.00			OSF<5.00			Enter Alert
184.69	198.78	48.91	-14.09	1.39	OSF1.50	17060.00	7018.00				OSF<1.50		Enter Minor
151.63	238.31	-9.94	-86.68	0.94	OSF1.50	17110.00	7018.00						Enter Major
124.92	284.62	-65.74	-159.71	0.65	OSF1.50	17190.00	7018.00						MinPts
124.82	284.51	-65.47	-159.68	0.65	OSF1.50	17200.00	7018.00						MinPt-CtCt
151.21	239.85	-9.22	-88.64	0.94	OSF1.50	17281.61	7018.00						TD

Skyway 3-11 GYRO+MWD 0' to 7939' - PR (Def Survey)													Fail Major
10950.99	32.81	10949.11	10918.19	154268.53	MAS = 10.00 (m)	0.00	0.00						Surface
10950.97	32.81	10949.02	10918.16	80709.14	MAS = 10.00 (m)	20.00	20.00						WRP
353.80	113.70	274.62	240.10	4.98	OSF1.50	15480.00	7018.00			OSF<5.00			Enter Alert
181.22	186.65	54.10	-5.43	1.45	OSF1.50	15680.00	7018.00				OSF<1.50		Enter Major
144.01	225.89	-8.50	-81.89	0.94	OSF1.50	15740.00	7018.00						Enter Minor
125.38	251.60	-42.89	-126.23	0.74	OSF1.50	15810.00	7018.00						MinPts
143.18	221.23	-4.84	-78.05	0.97	OSF1.50	15880.00	7018.00					OSF>1.00	Exit Major
172.96	185.46	48.79	-12.50	1.40	OSF1.50	15930.00	7018.00				OSF>1.50		Exit Minor
342.89	104.71	272.55	238.18	4.96	OSF1.50	16130.00	7018.00			OSF<5.00			Exit Alert
1476.08	59.69	1435.75	1416.39	38.07	OSF1.50	17281.61	7018.00						TD

Bost Farm 30N-11A-L R1 mdv 13June19 (Def Plan)													Fail Minor
20.04	16.22	19.05	3.81	N/A	MAS = 4.94 (m)	0.00	0.00						Enter Alert
20.04	16.22	19.05	3.81	N/A	MAS = 4.94 (m)	20.00	20.00						WRP
20.04	16.22	17.86	3.61	15.96	MAS = 4.94 (m)	250.00	250.00						MinPts
20.93	16.22	17.06	4.71	6.91	MAS = 4.94 (m)	540.00	539.50						MINPT-O-EOU
58.04	19.17	44.93	38.87	4.71	OSF1.50	1800.00	1784.11						MinPt-O-SF
63.46	19.79	49.95	43.68	4.98	OSF1.50	1960.00	1942.07			OSF>5.00			Exit Alert
214.73	52.95	179.11	161.78	6.17	OSF1.50	6400.00	6325.38						MinPt-O-SF
313.68	94.96	250.05	218.73	4.99	OSF1.50	8680.00	7018.00			OSF<5.00			Enter Alert
336.30	336.67	111.53	-0.37	1.50	OSF1.50	15670.00	7018.00				OSF<1.50		Enter Minor
318.20	391.38	56.98	-73.14	1.22	OSF1.50	17281.61	7018.00						MinPts

Bost Farm 4C-11-L2 - Plan (Def Plan)													Warning Alert
40.08	32.25	39.09	7.82	N/A	MAS = 9.83 (m)	0.00	0.00						Enter Alert
40.08	32.25	39.09	7.82	N/A	MAS = 9.83 (m)	20.00	20.00						MinPts
40.34	32.25	36.90	6.09	85.17	MAS = 9.83 (m)	150.00	150.00						MINPT-O-EOU
40.82	32.25	38.94	8.57	44.38	MAS = 9.83 (m)	250.00	250.00						MINPT-O-EOU
49.04	32.25	44.99	16.79	15.64	MAS = 9.83 (m)	660.00	658.60						Exit Alert
85.46	32.25	78.15	53.20	13.36	MAS = 9.83 (m)	1270.00	1260.88						MinPt-O-SF
110.92	32.25	101.75	78.66	13.44	MAS = 9.83 (m)	1630.00	1616.28						MinPt-O-SF
121.96	32.25	111.97	89.71	13.43	MAS = 9.83 (m)	1800.00	1784.11						MinPt-O-SF
424.07	128.08	338.36	296.00	4.99	OSF1.50	9620.00	7018.00			OSF<5.00			Enter Alert
375.72	233.11	219.99	142.61	2.42	OSF1.50	12630.00	7018.00						MinPt-CtCt

Offset Trajectory	Separation				Sep. Fact.	Controlling Rule	Reference Trajectory		Risk Level			Alert	Status
	Ct-Ct (ft)	MAS (ft)	EOU (ft)	Allow Dev. (ft)			MD (ft)	TVD (ft)	Alert	Minor	Major		
	438.67	402.64	169.91	36.03	1.63	OSF1.50	17281.61	7018.00				MinPts	
<b>Bost Farm 30N-11B-L - Plan (Def Plan)</b>												Warning Alert	
	40.08	32.25	39.09	7.82	N/A	MAS = 9.83 (m)	0.00	0.00				Enter Alert	
	40.36	32.25	38.65	8.10	54.71	MAS = 9.83 (m)	210.00	210.00				MinPts	
	49.03	32.25	45.20	16.78	16.86	MAS = 9.83 (m)	590.00	589.20				MINPT-O-EOU	
	68.06	32.25	60.47	35.81	10.15	MAS = 9.83 (m)	1120.00	1112.79				Exit Alert	
	106.61	32.25	96.13	74.36	11.13	MAS = 9.83 (m)	1640.00	1626.15				MinPt-O-SF	
	114.18	32.25	103.08	81.93	11.18	MAS = 9.83 (m)	1800.00	1784.11				MinPt-O-SF	
	116.63	32.25	105.30	84.37	11.18	MAS = 9.83 (m)	1860.00	1843.34				MinPt-O-SF	
	400.09	54.36	363.52	345.73	11.22	OSF1.50	6600.00	6522.25				MinPt-O-SF	
	492.32	148.46	393.02	343.86	5.00	OSF1.50	10220.00	7018.00				Enter Alert	
	472.78	406.29	201.59	66.48	1.75	OSF1.50	17281.61	7018.00				MinPts	
<b>Bost Farm 1N-8C-L IFR 0' to 17675' - DG (Def Survey)</b>												Warning Alert	
	180.16	32.81	178.35	147.35	N/A	MAS = 10.00 (m)	0.00	0.00				Surface	
	180.16	32.81	178.34	147.35	25655.22	MAS = 10.00 (m)	20.00	20.00				WRP	
	179.11	32.81	176.46	146.30	211.59	MAS = 10.00 (m)	240.00	240.00				MinPts	
	179.01	32.81	175.93	146.20	139.78	MAS = 10.00 (m)	350.00	349.98				MinPts	
	179.29	32.81	175.71	146.48	100.57	MAS = 10.00 (m)	450.00	449.84				MINPT-O-EOU	
	262.28	32.81	252.75	229.47	33.75	MAS = 10.00 (m)	1440.00	1428.71				MinPt-O-SF	
	311.12	32.81	299.83	278.31	32.65	MAS = 10.00 (m)	1790.00	1774.24				MinPt-O-SF	
	557.27	32.81	541.32	524.46	37.17	MAS = 10.00 (m)	3770.00	3728.96				MinPt-O-SF	
	650.29	32.81	631.29	617.49	36.04	MAS = 10.00 (m)	4440.00	4390.40				MinPt-O-SF	
	845.99	37.89	820.40	808.10	34.34	OSF1.50	5750.00	5683.67				MinPt-O-SF	
	911.25	41.62	883.17	869.69	33.69	OSF1.50	6200.00	6127.93				MinPt-O-SF	
	125.04	39.64	98.28	85.40	4.81	OSF1.50	7130.00	6934.11				Enter Alert	
	54.54	50.85	20.31	3.69	1.61	OSF1.50	7350.00	7008.28				MinPts	
	53.95	50.28	20.14	3.72	1.61	OSF1.50	7360.00	7009.94				MINPT-O-EOU	
	53.77	49.30	20.57	4.46	1.64	OSF1.50	7370.00	7011.44				MinPt-CtCt	
	87.93	32.81	68.69	55.12	4.76	MAS = 10.00 (m)	7520.00	7018.00				Exit Alert	
	9511.45	46.27	9480.28	9465.18	315.04	OSF1.50	17281.61	7018.00				TD	
<b>Bost Farm 31N-11C-L - Plan (Def Plan)</b>												Warning Alert	
	59.75	32.81	58.77	26.94	N/A	MAS = 10.00 (m)	0.00	0.00				Surface	
	59.75	32.81	58.77	26.94	N/A	MAS = 10.00 (m)	20.00	20.00				WRP	
	58.79	32.81	56.66	25.98	50.14	MAS = 10.00 (m)	310.00	310.00				MinPts	
	58.87	32.81	56.58	26.06	44.24	MAS = 10.00 (m)	340.00	339.99				MINPT-O-EOU	
	79.30	32.81	74.63	46.49	21.23	MAS = 10.00 (m)	730.00	727.77				MinPt-O-SF	
	179.42	32.81	169.42	146.61	19.80	MAS = 10.00 (m)	1800.00	1784.11				MinPt-O-SF	
	592.73	178.52	473.39	414.21	5.00	OSF1.50	11110.00	7018.00				Enter Alert	
	565.04	233.87	408.80	331.18	3.63	OSF1.50	12640.00	7018.00				MinPt-CtCt	
	627.91	405.33	357.36	222.58	2.33	OSF1.50	17281.61	7018.00				MinPts	
<b>Bost Farm 31N-11B-L - Plan (Def Plan)</b>												Warning Alert	
	79.79	32.81	78.80	46.98	N/A	MAS = 10.00 (m)	0.00	0.00				Surface	
	79.79	32.81	78.80	46.98	N/A	MAS = 10.00 (m)	20.00	20.00				WRP	
	79.50	32.81	77.62	46.69	88.11	MAS = 10.00 (m)	250.00	250.00				MinPts	
	79.54	32.81	77.59	46.73	81.25	MAS = 10.00 (m)	270.00	270.00				MINPT-O-EOU	
	238.36	32.81	228.45	205.59	26.59	MAS = 10.00 (m)	1800.00	1784.11				MinPt-O-SF	
	787.51	232.20	632.38	555.31	5.10	OSF1.50	12640.00	7018.00				MinPt-CtCt	
	789.31	237.62	630.57	551.69	5.00	OSF1.50	12790.00	7018.00				Enter Alert	
	850.41	402.91	581.47	447.50	3.17	OSF1.50	17281.61	7018.00				MinPts	
<b>Bost Farm 31C-11-L - Plan (Def Plan)</b>												Warning Alert	
	99.83	32.81	98.84	67.02	N/A	MAS = 10.00 (m)	0.00	0.00				Surface	
	99.83	32.81	98.84	67.02	N/A	MAS = 10.00 (m)	20.00	20.00				WRP	
	98.38	32.81	96.41	65.58	97.28	MAS = 10.00 (m)	270.00	270.00				MinPts	
	98.41	32.81	96.38	65.60	93.72	MAS = 10.00 (m)	280.00	280.00				MINPT-O-EOU	
	153.57	32.81	148.59	120.76	38.19	MAS = 10.00 (m)	830.00	826.49				MinPt-O-SF	
	301.57	32.81	291.69	268.76	33.77	MAS = 10.00 (m)	1800.00	1784.11				MinPt-O-SF	
	1013.51	234.32	856.97	779.20	6.51	OSF1.50	12640.00	7018.00				MinPt-CtCt	
	1041.90	313.57	832.52	728.32	4.99	OSF1.50	14800.00	7018.00				Enter Alert	
	1074.83	405.46	804.20	669.37	3.98	OSF1.50	17281.61	7018.00				MinPts	
<b>Sheep 2-12 GYRO 0' to 7880' - PR (Def Survey)</b>												Warning Alert	
	3097.69	32.81	3095.87	3064.88	N/A	MAS = 10.00 (m)	0.00	0.00				Surface	
	3097.68	32.81	3095.86	3064.87	684993.48	MAS = 10.00 (m)	10.00	10.00				MinPts	
	3097.68	32.81	3095.84	3064.87	114135.92	MAS = 10.00 (m)	20.00	20.00				WRP	
	3097.63	32.81	3094.92	3064.82	3464.20	MAS = 10.00 (m)	250.00	250.00				MinPts	
	313.04	99.07	245.62	213.97	4.88	OSF1.50	8990.00	7018.00				Enter Alert	
	109.30	93.89	46.12	15.41	1.76	OSF1.50	9270.00	7018.00				MinPts	
	108.50	92.54	46.27	15.96	1.76	OSF1.50	9280.00	7018.00				MinPt-CtCt	
	287.57	87.69	228.57	199.88	4.98	OSF1.50	9550.00	7018.00				Exit Alert	
	7999.70	93.38	7936.91	7906.32	130.73	OSF1.50	17281.61	7018.00				TD	
<b>Bost Farm 5N-11A-L - Plan (Def Plan)</b>												Warning Alert	
	119.86	32.81	118.05	87.06	N/A	MAS = 10.00 (m)	0.00	0.00				Surface	
	119.86	32.81	118.05	87.06	N/A	MAS = 10.00 (m)	20.00	20.00				WRP	
	119.03	32.81	116.12	86.22	106.31	MAS = 10.00 (m)	250.00	250.00				MinPts	
	119.05	32.81	116.09	86.24	102.10	MAS = 10.00 (m)	260.00	260.00				MINPT-O-EOU	
	177.34	32.81	171.53	144.53	43.91	MAS = 10.00 (m)	750.00	747.52				MinPt-O-SF	
	192.90	32.81	186.72	160.09	43.76	MAS = 10.00 (m)	830.00	826.49				MinPt-O-SF	
	355.16	32.81	344.56	322.35	40.21	MAS = 10.00 (m)	1770.00	1754.49				MinPt-O-SF	
	360.23	32.81	350.29	327.42	40.12	MAS = 10.00 (m)	1800.00	1784.11				MinPt-O-SF	
	1237.75	230.52	1083.74	1007.23	6.08	OSF1.50	12640.00	7018.00				MinPt-CtCt	
	1295.13	389.49	1035.15	905.65	5.00	OSF1.50	16970.00	7018.00				Enter Alert	
	1299.28	401.01	1031.62	898.28	4.87	OSF1.50	17281.61	7018.00				MinPts	
<b>Detienne 1-12 GYRO 0' to 7318' - PR (Def Survey)</b>												Warning Alert	
	1835.49	32.81	1833.67	1802.68	N/A	MAS = 10.00 (m)	0.00	0.00				Surface	
	1835.46	32.81	1833.65	1802.65	N/A	MAS = 10.00 (m)	10.00	10.00				MinPts	
	1835.46	32.81	1833.63	1802.65	88148.11	MAS = 10.00 (m)	20.00	20.00				WRP	
	1835.87	32.81	1833.38	1803.06	2609.68	MAS = 10.00 (m)	190.00	190.00				MINPT-O-EOU	
	195.09	61.93	152.99	133.15	4.86	OSF1.50	7810.00	7018.00				Enter Alert	
	144.50	63.33	101.74	81.17	3.47	OSF1.50	7940.00	7018.00				MinPts	
	200.44	62.46	158.26	137.98	4.90	OSF1.50	8080.00	7018.00				Exit Alert	
	9342.09	61.32	9300.67	9280.77	234.63	OSF1.50	17281.61	7018.00				TD	

Offset Trajectory	Separation			Allow Dev. (ft)	Sep. Fact.	Controlling Rule	Reference Trajectory		Risk Level			Alert	Status
	Ct-Ct (ft)	MAS (ft)	EOU (ft)				MD (ft)	TVD (ft)	Alert	Minor	Major		
Swafford 11-11 GYRO 0' to 7356' - PR (Def Survey)													
												Warning Alert	
	7345.03	32.81	7343.12	7312.22	74002.47	MAS = 10.00 (m)	0.00	0.00				MinPts	
	7345.04	32.81	7343.09	7312.23	51904.79	MAS = 10.00 (m)	20.00	20.00				WRP	
	7174.54	32.81	7164.18	7141.73	824.42	MAS = 10.00 (m)	1900.00	1882.83				MinPt-O-SF	
	349.44	110.62	273.12	238.82	4.96	OSF1.50	13270.00	7018.00	OSF<5.00			Enter Alert	
	190.94	190.02	63.47	0.92	1.51	OSF1.50	13560.00	7018.00				MinPts	
	370.31	114.78	293.26	255.54	4.89	OSF1.50	13880.00	7018.00	OSF<5.00			Exit Alert	
	3723.71	55.59	3686.12	3668.12	103.42	OSF1.50	17281.61	7018.00				TD	
Skyway Federal 31-11 GYRO 0' to 7442' - PR (Def Survey)													
												Warning Alert	
	10998.89	32.81	10997.03	10966.08	220202.36	MAS = 10.00 (m)	0.00	0.00				Surface	
	10998.87	32.81	10996.92	10966.06	82431.88	MAS = 10.00 (m)	20.00	20.00				WRP	
	10780.53	32.81	10766.83	10747.72	891.53	MAS = 10.00 (m)	3400.00	3363.68				MinPts	
	10780.66	32.81	10766.71	10747.85	873.69	MAS = 10.00 (m)	3480.00	3442.66				MINPT-O-EOU	
	10808.42	32.81	10789.04	10775.61	608.07	MAS = 10.00 (m)	4670.00	4617.46				MinPts	
	10808.70	32.81	10788.75	10775.89	588.99	MAS = 10.00 (m)	4790.00	4735.93				MINPT-O-EOU	
	10822.22	34.37	10798.77	10787.85	495.35	OSF1.50	5400.00	5338.14				MinPts	
	756.06	235.09	596.88	520.97	4.93	OSF1.50	17180.00	7018.00	OSF<5.00			Enter Alert	
	698.59	253.78	527.28	444.81	4.20	OSF1.50	17281.61	7018.00				MinPts	
Skyway 18-11 GYRO+MWD 0' to 7919' - PR (Def Survey)													
												Warning Alert	
	10929.00	32.81	10927.14	10896.19	256007.96	MAS = 10.00 (m)	0.00	0.00				MinPts	
	10929.02	32.81	10927.12	10896.21	133843.24	MAS = 10.00 (m)	20.00	20.00				WRP	
	10929.13	32.81	10927.08	10896.32	45737.19	MAS = 10.00 (m)	80.00	80.00				MINPT-O-EOU	
	786.40	239.37	625.21	547.03	5.00	OSF1.50	16050.00	7018.00	OSF<5.00			Enter Alert	
	715.73	264.42	538.91	451.30	4.08	OSF1.50	16380.00	7018.00				MinPts	
	715.86	264.57	538.94	451.29	4.07	OSF1.50	16390.00	7018.00				MinPts	
	803.03	242.99	640.50	560.04	4.98	OSF1.50	16740.00	7018.00	OSF<5.00			Exit Alert	
	1154.41	179.72	1034.06	974.69	9.71	OSF1.50	17281.61	7018.00				TD	
UPRC 7-4H6 GYRO 0' to 7342' - PR (Def Survey)													
												Pass	
	728.84	32.81	727.02	696.03	N/A	MAS = 10.00 (m)	0.00	0.00				Surface	
	728.70	32.81	726.87	695.89	43096.81	MAS = 10.00 (m)	20.00	20.00				MinPts	
	137.43	33.18	114.78	104.26	6.45	OSF1.50	5040.00	4982.74				MinPt-CiCt	
	137.44	33.20	114.77	104.24	6.45	OSF1.50	5050.00	4992.61				MinPts	
	138.00	33.39	115.20	104.60	6.44	OSF1.50	5110.00	5051.85				MinPt-O-SF	
	10493.31	46.78	10461.59	10446.53	348.38	OSF1.50	17281.61	7018.00				TD	
Bost Farm 5C-11-L - Plan (Def Plan)													
												Pass	
	139.90	32.81	138.92	107.09	N/A	MAS = 10.00 (m)	0.00	0.00				Surface	
	139.90	32.81	138.92	107.09	N/A	MAS = 10.00 (m)	20.00	20.00				WRP	
	139.89	32.81	138.61	107.08	459.14	MAS = 10.00 (m)	110.00	110.00				MinPts	
	140.07	32.81	138.24	107.26	165.37	MAS = 10.00 (m)	210.00	210.00				MINPT-O-EOU	
	237.16	32.81	231.39	204.36	49.29	MAS = 10.00 (m)	930.00	925.22				MinPt-O-SF	
	414.73	32.81	404.65	381.92	45.50	MAS = 10.00 (m)	1800.00	1784.11				MinPt-O-SF	
	1450.46	232.73	1294.98	1217.73	9.38	OSF1.50	12640.00	7018.00				MinPt-CiCt	
	1511.65	403.89	1242.06	1107.76	5.62	OSF1.50	17281.61	7018.00				MinPts	
Bost Farm 32N-11C-L R0 mdv 12June19 (Def Plan)													
												Pass	
	159.94	32.81	158.96	127.13	N/A	MAS = 10.00 (m)	0.00	0.00				Surface	
	159.94	32.81	158.96	127.13	N/A	MAS = 10.00 (m)	20.00	20.00				WRP	
	158.42	32.81	156.56	125.61	180.67	MAS = 10.00 (m)	250.00	250.00				MinPts	
	158.42	32.81	156.53	125.61	173.25	MAS = 10.00 (m)	260.00	260.00				MINPT-O-EOU	
	243.89	32.81	238.46	211.08	54.59	MAS = 10.00 (m)	850.00	846.24				MinPt-O-SF	
	399.10	32.81	390.55	366.30	52.60	MAS = 10.00 (m)	1500.00	1487.94				MinPt-O-SF	
	469.94	32.81	459.86	437.13	51.60	MAS = 10.00 (m)	1800.00	1784.11				MinPt-O-SF	
	1497.54	42.22	1469.07	1455.33	54.44	OSF1.50	5700.00	5634.31				MinPt-O-SF	
	1529.87	42.61	1501.13	1487.28	55.10	OSF1.50	5890.00	5821.89				MinPt-O-SF	
	1665.78	229.89	1512.19	1435.89	10.91	OSF1.50	12640.00	7018.00				MinPt-CiCt	
	1728.62	401.49	1460.63	1327.13	6.47	OSF1.50	17281.61	7018.00				MinPts	
Bost Farm 32C-11-L - Plan (Def Plan)													
												Pass	
	179.98	32.81	178.99	147.17	N/A	MAS = 10.00 (m)	0.00	0.00				Surface	
	179.98	32.81	178.99	147.17	N/A	MAS = 10.00 (m)	20.00	20.00				WRP	
	179.55	32.81	177.51	146.74	168.82	MAS = 10.00 (m)	250.00	250.00				MinPts	
	179.56	32.81	177.48	146.75	162.86	MAS = 10.00 (m)	260.00	260.00				MINPT-O-EOU	
	372.71	32.81	365.11	339.90	56.23	MAS = 10.00 (m)	1240.00	1231.26				MinPt-O-SF	
	524.56	32.81	514.35	491.75	56.77	MAS = 10.00 (m)	1800.00	1784.11				MinPt-O-SF	
	1890.84	231.91	1735.91	1658.93	12.28	OSF1.50	12640.00	7018.00				MinPt-CiCt	
	1952.17	402.92	1683.23	1549.25	7.28	OSF1.50	17281.61	7018.00				MinPts	
Bost Farm 1N-8B-L IFR 0' to 17550' - DG (Def Survey)													
												Pass	
	181.11	32.81	179.30	148.30	N/A	MAS = 10.00 (m)	0.00	0.00				Surface	
	181.11	32.81	179.30	148.30	N/A	MAS = 10.00 (m)	10.00	10.00				MinPts	
	181.11	32.81	179.29	148.30	26891.84	MAS = 10.00 (m)	20.00	20.00				WRP	
	181.38	32.81	178.57	148.57	180.05	MAS = 10.00 (m)	230.00	230.00				MINPT-O-EOU	
	181.79	32.81	178.62	148.99	132.61	MAS = 10.00 (m)	310.00	310.00				MINPT-O-EOU	
	265.05	32.81	255.63	232.24	34.59	MAS = 10.00 (m)	1350.00	1339.85				MinPt-O-SF	
	331.54	32.81	320.11	298.73	33.60	MAS = 10.00 (m)	1850.00	1833.47				MinPt-O-SF	
	584.64	32.81	569.47	551.83	41.16	MAS = 10.00 (m)	3630.00	3590.74				MinPt-O-SF	
	598.90	32.81	583.39	566.09	41.17	MAS = 10.00 (m)	3730.00	3689.47				MinPt-O-SF	
	904.19	40.15	877.10	864.05	34.60	OSF1.50	6150.00	6078.57				MinPt-O-SF	
	234.31	48.47	201.67	185.85	7.37	OSF1.50	7220.00	6972.97				MinPt-O-SF	
	232.05	47.56	200.01	184.49	7.44	OSF1.50	7270.00	6989.54				MinPt-O-ADP	
	231.68	47.35	200.05	184.55	7.47	OSF1.50	7280.00	6992.41				MINPT-O-EOU	
	231.80	47.08	200.09	184.73	7.51	OSF1.50	7290.00	6995.13				MinPt-CiCt	
	9541.69	44.95	9511.40	9496.74	325.52	OSF1.50	17281.61	7018.00				TD	
Bost Farm 26C-8-L IFR 0' to 17765' - DG (Def Survey)													
												Pass	
	181.16	32.81	180.17	148.35	N/A	MAS = 10.00 (m)	0.00	0.00				Surface	
	181.16	32.81	180.17	148.35	N/A	MAS = 10.00 (m)	10.00	10.00				MinPts	
	181.16	32.81	180.17	148.35	27033.77	MAS = 10.00 (m)	20.00	20.00				WRP	
	181.14	32.81	178.56	148.33	113.39	MAS = 10.00 (m)	400.00	399.93				MinPts	
	181.18	32.81	178.49	148.37	105.90	MAS = 10.00 (m)	420.00	419.90				MINPT-O-EOU	
	257.09	32.81	248.26	224.28	32.67	MAS = 10.00 (m)	1440.00	1428.71				MinPt-O-SF	

...Bost Farm 4N-11C-L\Original Hole\Bost Farm 4N-11C-L R1 mdv 13June19

Offset Trajectory	Separation				Sep. Fact.	Controlling Rule	Reference Trajectory		Risk Level			Alert	Status
	Ct-Ct (ft)	MAS (ft)	EOU (ft)	Allow Dev. (ft)			MD (ft)	TVD (ft)	Alert	Minor	Major		
304.86	32.81	293.93	272.06	30.54	MAS = 10.00 (m)	1810.00	1793.98				MinPt-O-SF		
312.64	32.81	301.45	279.89	30.52	MAS = 10.00 (m)	1860.00	1843.34				MinPt-O-SF		
919.44	44.37	889.53	875.07	31.75	OSF1.50	6360.00	6285.89				MinPt-O-SF		
202.71	52.57	167.33	150.14	5.87	OSF1.50	7520.00	7018.00				MinPt-CiCt		
202.77	52.89	167.19	149.89	5.83	OSF1.50	7530.00	7018.00				MINPT-O-EOU		
203.00	53.19	167.21	149.81	5.80	OSF1.50	7540.00	7018.00				MinPt-O-ADP		
203.98	53.68	167.87	150.30	5.78	OSF1.50	7560.00	7018.00				MinPt-O-SF		
9517.27	48.73	9484.45	9468.53	298.96	OSF1.50	17281.61	7018.00				TD		

Bost Farm 26N-8B-L IFR 0' to 17610' - DG (Def Survey) Pass

184.61	32.81	183.63	151.80	N/A	MAS = 10.00 (m)	0.00	0.00				Surface	
184.61	32.81	183.62	151.80	24279.54	MAS = 10.00 (m)	20.00	20.00				WRP	
182.78	32.81	180.99	149.97	225.59	MAS = 10.00 (m)	230.00	230.00				MinPts	
182.81	32.81	180.94	150.00	205.27	MAS = 10.00 (m)	250.00	250.00				MINPT-O-EOU	
183.25	32.81	180.83	150.44	127.10	MAS = 10.00 (m)	380.00	379.96				MINPT-O-EOU	
186.39	32.81	182.13	153.58	56.62	MAS = 10.00 (m)	700.00	698.15				MinPts	
186.44	32.81	182.06	153.63	54.60	MAS = 10.00 (m)	720.00	717.90				MINPT-O-EOU	
239.82	32.81	231.93	207.01	34.57	MAS = 10.00 (m)	1270.00	1260.88				MinPt-O-SF	
251.88	32.81	243.62	219.07	34.49	MAS = 10.00 (m)	1350.00	1339.85				MinPt-O-SF	
310.91	32.81	300.54	278.11	33.00	MAS = 10.00 (m)	1800.00	1784.11				MinPt-O-SF	
317.83	32.81	307.24	285.02	32.99	MAS = 10.00 (m)	1850.00	1833.47				MinPt-O-SF	
995.18	44.78	965.00	950.40	34.05	OSF1.50	6210.00	6137.80				MinPt-O-SF	
424.59	54.51	387.93	370.09	11.87	OSF1.50	7320.00	7002.39				MinPt-CiCt	
424.60	54.57	387.90	370.04	11.86	OSF1.50	7330.00	7004.51				MinPts	
424.91	54.66	388.14	370.25	11.85	OSF1.50	7350.00	7008.28				MinPt-O-SF	
9531.82	49.75	9498.33	9482.07	293.17	OSF1.50	17281.61	7018.00				TD	

Bost Farm 41N-8C-L IFR 0' to 17635' - DG (Def Survey) Pass

184.52	32.81	183.54	151.71	N/A	MAS = 10.00 (m)	0.00	0.00				Surface	
184.52	32.81	183.53	151.71	27269.25	MAS = 10.00 (m)	20.00	20.00				WRP	
183.96	32.81	182.11	151.15	211.88	MAS = 10.00 (m)	240.00	240.00				MinPts	
184.00	32.81	182.09	151.19	196.85	MAS = 10.00 (m)	260.00	260.00				MINPT-O-EOU	
343.21	32.81	332.90	310.40	36.69	MAS = 10.00 (m)	1800.00	1784.11				MinPt-O-SF	
348.43	32.81	337.98	315.62	36.69	MAS = 10.00 (m)	1840.00	1823.60				MinPt-O-SF	
355.59	32.81	344.94	322.78	36.70	MAS = 10.00 (m)	1900.00	1882.83				MinPt-O-SF	
992.70	41.74	964.54	950.96	36.50	OSF1.50	6200.00	6127.93				MinPt-O-SF	
404.24	49.03	371.23	355.21	12.59	OSF1.50	7410.00	7015.91				MinPt-O-SF	
404.19	49.02	371.19	355.18	12.59	OSF1.50	7420.00	7016.64				MinPts	
9536.60	48.13	9504.19	9488.47	303.37	OSF1.50	17281.61	7018.00				TD	

Bost Farm 41C-8-L IFR 0' to 17718' - DG (Def Survey) Pass

189.73	32.81	188.74	156.92	N/A	MAS = 10.00 (m)	0.00	0.00				Surface	
189.73	32.81	188.74	156.92	28273.06	MAS = 10.00 (m)	20.00	20.00				WRP	
189.71	32.81	188.29	156.90	428.09	MAS = 10.00 (m)	140.00	140.00				MinPts	
189.80	32.81	188.02	156.99	235.50	MAS = 10.00 (m)	230.00	230.00				MINPT-O-EOU	
367.31	32.81	357.02	334.50	39.38	MAS = 10.00 (m)	1800.00	1784.11				MinPt-O-SF	
669.19	32.81	654.09	636.38	47.33	MAS = 10.00 (m)	3800.00	3758.57				MinPt-O-SF	
1080.68	39.56	1053.98	1041.12	41.99	OSF1.50	6340.00	6266.14				MinPt-O-SF	
664.30	49.87	630.73	614.43	20.35	OSF1.50	7520.00	7018.00				MinPt-CiCt	
664.33	49.91	630.72	614.41	20.34	OSF1.50	7530.00	7018.00				MinPts	
664.92	50.06	631.22	614.86	20.29	OSF1.50	7570.00	7018.00				MinPt-O-SF	
9542.50	46.79	9510.98	9495.71	312.43	OSF1.50	17281.61	7018.00				TD	

Bost Farm 41N-8B-L IFR 0' to 17620' - DG (Def Survey) Pass

196.96	32.81	195.97	164.15	N/A	MAS = 10.00 (m)	0.00	0.00				Surface	
196.96	32.81	195.97	164.15	29175.40	MAS = 10.00 (m)	20.00	20.00				WRP	
196.81	32.81	195.34	164.00	398.23	MAS = 10.00 (m)	150.00	150.00				MinPts	
196.87	32.81	195.30	164.06	335.90	MAS = 10.00 (m)	170.00	170.00				MINPT-O-EOU	
401.11	32.81	390.32	368.30	40.78	MAS = 10.00 (m)	1800.00	1784.11				MinPt-O-SF	
753.43	32.81	737.98	720.62	52.01	MAS = 10.00 (m)	3800.00	3758.57				MinPt-O-SF	
831.06	32.81	814.18	798.25	52.22	MAS = 10.00 (m)	4180.00	4133.72				MinPt-O-SF	
905.27	32.81	886.93	872.47	52.10	MAS = 10.00 (m)	4530.00	4479.25				MinPt-O-SF	
908.78	48.47	876.14	860.32	28.68	OSF1.50	7100.00	6918.68				MinPts	
908.80	48.48	876.15	860.31	28.67	OSF1.50	7110.00	6923.96				MinPt-O-ADP	
910.02	48.61	877.29	861.42	28.63	OSF1.50	7180.00	6957.11				MinPt-O-SF	
911.52	48.69	878.74	862.84	28.63	OSF1.50	7220.00	6972.97				MinPt-O-SF	
906.09	48.12	873.68	857.97	28.80	OSF1.50	7620.00	7018.00				MinPts	
906.11	48.14	873.69	857.97	28.79	OSF1.50	7630.00	7018.00				MinPt-O-ADP	
907.28	48.27	874.77	859.01	28.75	OSF1.50	7680.00	7018.00				MinPt-O-SF	
9537.44	48.10	9505.05	9489.35	303.63	OSF1.50	17281.61	7018.00				TD	

Bost Farm 41N-8A-L IFR 0' to 17515' - DG (Def Survey) Pass

205.99	32.81	205.01	173.19	N/A	MAS = 10.00 (m)	0.00	0.00				Surface	
205.99	32.81	205.01	173.19	N/A	MAS = 10.00 (m)	10.00	10.00				MinPts	
205.99	32.81	205.00	173.19	30665.35	MAS = 10.00 (m)	20.00	20.00				WRP	
205.97	32.81	204.16	173.17	245.61	MAS = 10.00 (m)	230.00	230.00				MinPts	
205.99	32.81	204.14	173.18	235.85	MAS = 10.00 (m)	240.00	240.00				MINPT-O-EOU	
327.49	32.81	319.66	294.68	47.70	MAS = 10.00 (m)	1270.00	1260.88				MinPt-O-SF	
436.90	32.81	426.50	404.09	46.29	MAS = 10.00 (m)	1800.00	1784.11				MinPt-O-SF	
811.02	32.81	795.90	778.21	57.30	MAS = 10.00 (m)	3710.00	3669.72				MinPt-O-SF	
1086.70	32.81	1065.71	1053.89	54.27	MAS = 10.00 (m)	5030.00	4972.87				MinPt-O-SF	
1209.37	36.02	1185.03	1173.35	51.74	OSF1.50	5730.00	5663.93				MinPt-O-SF	
1298.06	38.51	1272.05	1259.54	51.84	OSF1.50	6140.00	6068.70				MinPt-O-SF	
1119.58	49.45	1086.28	1070.13	34.62	OSF1.50	6820.00	6723.21				MinPt-O-SF	
1119.48	49.46	1086.22	1070.08	34.65	OSF1.50	6830.00	6731.56				MinPts	
1119.43	49.24	1086.27	1070.19	34.77	OSF1.50	6850.00	6748.01				MinPt-CiCt	
1130.60	46.49	1099.28	1084.11	37.23	OSF1.50	7350.00	7008.28				MinPt-O-SF	
1115.46	46.85	1083.90	1068.61	36.44	OSF1.50	7610.00	7018.00				MinPt-CiCt	
1115.48	46.96	1083.89	1068.59	36.44	OSF1.50	7620.00	7018.00				MinPts	
1120.08	47.27	1088.24	1072.81	36.27	OSF1.50	7730.00	7018.00				MinPt-O-SF	
9588.79	49.11	9555.72	9539.68	298.81	OSF1.50	17281.61	7018.00				TD	

Bost Farm 8N-8C-L IFR 0' to 17645' - DG (Def Survey) Pass

216.28	32.81	215.30	183.47	N/A	MAS = 10.00 (m)	0.00	0.00				Surface	
216.28	32.81	215.30	183.47	N/A	MAS = 10.00 (m)	10.00	10.00				MinPts	
216.28	32.81	215.29	183.47	32381.75	MAS = 10.00 (m)	20.00	20.00				WRP	
216.87	32.81	214.90	184.07	217.73	MAS = 10.00 (m)	230.00	230.00					

Offset Trajectory	Separation			Allow Dev. (ft)	Sep. Fact.	Controlling Rule	Reference Trajectory		Risk Level			Alert	Status
	Ct-Ct (ft)	MAS (ft)	EOU (ft)				MD (ft)	TVD (ft)	Alert	Minor	Major		
1029.36	32.81	1011.81	996.55	52.09	MAS = 10.00 (m)	4260.00	4212.70					MinPt-O-SF	
1326.53	50.03	1292.85	1276.51	40.54	OSF1.50	7570.00	7018.00					MinPt-CiCt	
1326.55	50.08	1292.83	1276.47	40.50	OSF1.50	7580.00	7018.00					MinPt-O-EOU	
1326.58	50.12	1292.84	1276.46	40.46	OSF1.50	7590.00	7018.00					MinPt-O-ADP	
1343.75	51.65	1308.99	1292.10	39.73	OSF1.50	7870.00	7018.00					MinPt-O-SF	
9613.70	53.45	9577.74	9560.25	274.84	OSF1.50	17281.61	7018.00					TD	

**Bost Farm 8C-8-L IFR 0' to 17780' - DG (Def Survey)** Pass

228.09	32.81	227.10	195.28	N/A	MAS = 10.00 (m)	0.00	0.00					Surface	
228.09	32.81	227.10	195.28	N/A	MAS = 10.00 (m)	10.00	10.00					MinPts	
228.09	32.81	227.10	195.28	33310.99	MAS = 10.00 (m)	20.00	20.00					WRP	
228.14	32.81	227.05	195.33	2269.18	MAS = 10.00 (m)	50.00	50.00					MINPT-O-EOU	
383.94	32.81	375.60	351.13	52.04	MAS = 10.00 (m)	1290.00	1280.62					MinPt-O-SF	
508.22	32.81	497.15	475.41	50.31	MAS = 10.00 (m)	1800.00	1784.11					MinPt-O-SF	
949.90	32.81	934.61	917.09	66.37	MAS = 10.00 (m)	3580.00	3541.38					MinPt-O-SF	
1166.14	32.81	1147.97	1133.33	67.78	MAS = 10.00 (m)	4390.00	4341.04					MinPt-O-SF	
1430.30	35.33	1406.42	1394.97	62.42	OSF1.50	5460.00	5397.38					MinPt-O-SF	
1618.19	40.98	1590.54	1577.21	60.65	OSF1.50	6270.00	6197.04					MinPt-O-SF	
1579.63	49.87	1546.05	1529.76	48.44	OSF1.50	7060.00	6986.28					MinPts	
1579.66	49.91	1546.06	1529.75	48.40	OSF1.50	7070.00	6902.07					MinPt-O-ADP	
1581.55	50.11	1547.81	1531.43	48.28	OSF1.50	7170.00	6952.78					MinPt-O-SF	
1580.22	50.36	1546.38	1529.92	48.04	OSF1.50	7370.00	7011.44					MinPts	
1534.21	51.63	1499.46	1482.58	45.41	OSF1.50	7770.00	7018.00					MinPt-CiCt	
1534.23	51.72	1499.43	1482.52	45.33	OSF1.50	7780.00	7018.00					MinPts	
1576.77	54.76	1539.93	1522.00	43.93	OSF1.50	8140.00	7018.00					MinPt-O-SF	
9628.77	57.65	9590.02	9571.13	254.87	OSF1.50	17281.61	7018.00					TD	

**Bost Farm 40N-8B-L IFR 0' to 17560' - DG (Def Survey)** Pass

240.78	32.81	239.79	207.97	N/A	MAS = 10.00 (m)	0.00	0.00					Surface	
240.78	32.81	239.79	207.97	N/A	MAS = 10.00 (m)	10.00	10.00					MinPts	
240.78	32.81	239.79	207.97	54025.26	MAS = 10.00 (m)	20.00	20.00					WRP	
241.25	32.81	239.61	208.45	361.41	MAS = 10.00 (m)	190.00	190.00					MINPT-O-EOU	
492.51	32.81	482.79	459.71	56.23	MAS = 10.00 (m)	1580.00	1566.92					MinPt-O-SF	
552.33	32.81	541.58	519.52	56.47	MAS = 10.00 (m)	1800.00	1784.11					MinPt-O-SF	
1107.50	32.81	1091.19	1074.69	72.19	MAS = 10.00 (m)	3850.00	3807.93					MinPt-O-SF	
1479.55	32.81	1457.50	1446.74	70.21	MAS = 10.00 (m)	5160.00	5101.21					MinPt-O-SF	
1739.97	40.14	1712.89	1699.83	66.62	OSF1.50	6110.00	6039.08					MinPt-O-SF	
1763.76	48.32	1731.22	1715.44	55.86	OSF1.50	7150.00	6943.72					MinPt-O-SF	
1747.20	50.46	1713.23	1696.73	52.94	OSF1.50	7560.00	7018.00					MinPt-CiCt	
1747.22	50.54	1713.20	1696.68	52.85	OSF1.50	7570.00	7018.00					MINPT-O-EOU	
1747.29	50.63	1713.21	1696.67	52.77	OSF1.50	7580.00	7018.00					MinPt-O-ADP	
1768.68	52.77	1733.17	1715.91	51.20	OSF1.50	7880.00	7018.00					MinPt-O-SF	
1813.76	54.17	1777.32	1759.59	51.13	OSF1.50	8140.00	7018.00					MinPt-O-SF	
9703.06	59.83	9662.84	9643.22	247.29	OSF1.50	17281.61	7018.00					TD	

**Bost Farm 40C-8-L IFR 0' to 17820' - DG (Def Survey)** Pass

254.61	32.81	253.63	221.80	N/A	MAS = 10.00 (m)	0.00	0.00					Surface	
254.61	32.81	253.62	221.80	57013.37	MAS = 10.00 (m)	20.00	20.00					WRP	
254.42	32.81	252.37	221.61	239.50	MAS = 10.00 (m)	240.00	240.00					MinPts	
254.49	32.81	252.27	221.68	204.22	MAS = 10.00 (m)	280.00	280.00					MINPT-O-EOU	
446.08	32.81	437.88	413.27	61.68	MAS = 10.00 (m)	1320.00	1310.24					MinPt-O-SF	
588.70	32.81	578.01	555.89	60.58	MAS = 10.00 (m)	1800.00	1784.11					MinPt-O-SF	
880.81	32.81	868.40	848.00	77.01	MAS = 10.00 (m)	2750.00	2721.98					MinPt-O-SF	
1202.45	32.81	1186.19	1169.64	78.66	MAS = 10.00 (m)	3910.00	3867.17					MinPt-O-SF	
1285.08	32.81	1267.88	1252.27	79.19	MAS = 10.00 (m)	4180.00	4133.72					MinPt-O-SF	
1802.66	38.17	1776.88	1764.49	72.67	OSF1.50	5920.00	5851.50					MinPt-O-SF	
1935.01	52.42	1899.74	1882.59	56.40	OSF1.50	7780.00	7018.00					MinPt-CiCt	
1935.03	52.51	1899.69	1882.51	56.30	OSF1.50	7790.00	7018.00					MINPT-O-EOU	
1935.09	52.61	1899.68	1882.48	56.20	OSF1.50	7800.00	7018.00					MinPt-O-ADP	
2028.07	58.28	1988.89	1969.79	53.07	OSF1.50	8390.00	7018.00					MinPt-O-SF	
2034.15	58.45	1994.85	1975.70	53.07	OSF1.50	8410.00	7018.00					MinPt-O-SF	
9721.90	65.72	9677.76	9656.18	225.24	OSF1.50	17281.61	7018.00					TD	

**UPRC 7-5H6 GYRO 0' to 7363' - PR (Def Survey)** Pass

749.62	32.81	747.81	716.81	N/A	MAS = 10.00 (m)	0.00	0.00					Surface	
749.46	32.81	747.63	716.65	35265.54	MAS = 10.00 (m)	10.00	10.00					MinPt-O-SF	
749.43	32.81	747.61	716.62	120078.82	MAS = 10.00 (m)	20.00	20.00					WRP	
749.05	32.81	745.82	716.25	525.60	MAS = 10.00 (m)	370.00	369.96					MinPts	
749.25	32.81	745.62	716.45	409.76	MAS = 10.00 (m)	470.00	469.78					MINPT-O-EOU	
781.28	32.81	770.11	748.47	81.45	MAS = 10.00 (m)	1930.00	1912.45					MinPt-O-SF	
785.07	32.81	773.85	752.26	81.52	MAS = 10.00 (m)	2030.00	2011.17					MinPt-O-SF	
1128.14	48.21	1095.46	1079.93	36.25	OSF1.50	6730.00	6644.54					MinPt-O-SF	
10609.97	48.06	10577.40	10561.91	342.50	OSF1.50	17281.61	7018.00					TD	

**Napoleon J 7-6 GYRO 0' to 7875' - PR (Def Survey)** Pass

988.18	32.81	986.37	955.37	N/A	MAS = 10.00 (m)	0.00	0.00					Surface	
988.00	32.81	986.16	955.19	33019.82	MAS = 10.00 (m)	10.00	10.00					MinPt-O-SF	
987.92	32.81	986.09	955.11	71531.21	MAS = 10.00 (m)	20.00	20.00					WRP	
982.78	32.81	976.63	949.97	225.80	MAS = 10.00 (m)	990.00	984.45					MinPts	
943.08	32.81	929.57	910.27	79.07	MAS = 10.00 (m)	2420.00	2396.19					MinPts	
943.14	32.81	929.45	910.33	77.89	MAS = 10.00 (m)	2450.00	2425.81					MINPT-O-EOU	
1208.13	32.81	1186.10	1175.32	59.07	MAS = 10.00 (m)	3860.00	3817.81					MinPt-O-SF	
1352.69	35.39	1328.56	1317.30	59.99	OSF1.50	4260.00	4212.70					MinPt-O-SF	
1410.02	36.94	1384.86	1373.08	59.79	OSF1.50	4400.00	4350.91					MinPt-O-SF	
1586.57	41.27	1558.52	1545.30	59.93	OSF1.50	4840.00	4785.29					MinPt-O-SF	
1835.65	49.36	1802.20	1786.28	57.60	OSF1.50	5570.00	5505.97					MinPt-O-SF	
1950.86	52.20	1915.53	1898.66	57.79	OSF1.50	6420.00	6345.12					MinPt-O-SF	
1965.55	52.61	1929.94	1912.99	57.75	OSF1.50	6540.00	6463.57					MinPt-O-SF	
11911.69	75.81	11860.62	11835.89	240.75	OSF1.50	17281.61	7018.00					TD	

**Napoleon J 7-3 GYRO 0' to 7355' - PA (Def Survey)** Pass

1019.89	32.81	1018.08	987.08	N/A	MAS = 10.00 (m)	0.00	0.00					Surface	
1019.71	32.81	1017.86	986.90	32662.56	MAS = 10.00 (m)	10.00	10.00						

Offset Trajectory	Separation			Allow Dev. (ft)	Sep. Fact.	Controlling Rule	Reference Trajectory		Risk Level			Alert	Status
	Ct-Ct (ft)	MAS (ft)	EOU (ft)				MD (ft)	TVD (ft)	Alert	Minor	Major		
Datienna 17-12 Blind 0' to 7308' - PR (Def Survey)													
	1858.81	32.81	1857.00	1826.00	N/A	MAS = 10.00 (m)	0.00	0.00				Surface	Pass
	1858.78	32.81	1856.76	1825.97	8942.31	MAS = 10.00 (m)	20.00	20.00				WRP	
	1732.66	277.17	1547.34	1455.48	9.42	OSF1.50	4700.00	4647.08				MinPt-CiCt	
	1411.96	422.02	1130.08	989.94	5.03	OSF1.50	7960.00	7018.00				MinPts	
	1411.98	422.04	1130.09	989.94	5.03	OSF1.50	7970.00	7018.00				MinPt-O-SF	
	9446.96	420.13	9166.33	9026.83	33.85	OSF1.50	17281.61	7018.00				TD	
Skyway 6-11 GYRO 0' to 7640' - PR (Def Survey)													
	10907.09	32.81	10885.34	10874.28	546.96	MAS = 10.00 (m)	0.00	0.00				Surface	Pass
	10898.71	32.81	10876.86	10865.90	543.85	MAS = 10.00 (m)	20.00	20.00				WRP	
	1444.54	252.79	1275.48	1191.75	8.62	OSF1.50	15800.00	7018.00				MinPt-CiCt	
	1444.69	253.28	1275.34	1191.46	8.60	OSF1.50	15820.00	7018.00				MINPT-O-EOU	
	1444.87	253.44	1275.38	1191.44	8.60	OSF1.50	15830.00	7018.00				MinPt-O-ADP	
	1448.07	254.54	1277.84	1193.52	8.58	OSF1.50	15900.00	7018.00				MinPt-O-SF	
	2069.96	204.70	1932.96	1865.26	15.28	OSF1.50	17281.61	7018.00				TD	
Sheep 7-12 GYRO 0' to 7436' - PR (Def Survey)													
	3141.03	32.81	3139.22	3108.22	N/A	MAS = 10.00 (m)	0.00	0.00				Surface	Pass
	3141.02	32.81	3139.20	3108.21	672983.38	MAS = 10.00 (m)	10.00	10.00				MinPts	
	3141.02	32.81	3139.18	3108.21	111652.71	MAS = 10.00 (m)	20.00	20.00				WRP	
	3141.10	32.81	3139.13	3108.29	20821.81	MAS = 10.00 (m)	60.00	60.00				MINPT-O-EOU	
	3138.82	32.81	3133.30	3106.01	845.77	MAS = 10.00 (m)	780.00	777.13				MinPts	
	3139.00	32.81	3133.07	3106.19	762.38	MAS = 10.00 (m)	850.00	846.24				MINPT-O-EOU	
	1457.59	88.75	1397.89	1368.84	25.06	OSF1.50	9320.00	7018.00				MinPt-CiCt	
	1457.67	89.11	1397.73	1368.56	24.96	OSF1.50	9340.00	7018.00				MINPT-O-EOU	
	1457.81	89.28	1397.76	1368.53	24.91	OSF1.50	9350.00	7018.00				MinPt-O-ADP	
	1481.61	92.69	1419.29	1388.93	24.37	OSF1.50	9590.00	7018.00				MinPt-O-SF	
	8115.37	75.47	8064.52	8039.90	164.77	OSF1.50	17281.61	7018.00				TD	
Borenen 1 Blind 0' to 7244' - SI (Def Survey)													
	1861.82	32.81	1860.01	1829.01	N/A	MAS = 10.00 (m)	0.00	0.00				Surface	Pass
	1861.77	32.81	1859.83	1828.96	14811.51	MAS = 10.00 (m)	20.00	20.00				WRP	
	1757.14	255.65	1586.17	1501.49	10.37	OSF1.50	4340.00	4291.68				MinPt-CiCt	
	1471.80	421.74	1190.11	1050.06	5.25	OSF1.50	7940.00	7018.00				MinPt-CiCt	
	1471.81	421.76	1190.11	1050.05	5.25	OSF1.50	7950.00	7018.00				MinPts	
	9475.40	420.04	9194.84	9055.36	33.96	OSF1.50	17281.61	7018.00				TD	
Skyway 5-11 GYRO 0' to 7350' - PR (Def Survey)													
	11117.08	32.81	11115.15	11084.27	93532.20	MAS = 10.00 (m)	0.00	0.00				Surface	Pass
	11117.05	32.81	11115.06	11084.24	63285.30	MAS = 10.00 (m)	20.00	20.00				WRP	
	11116.82	32.81	11114.36	11084.01	17154.95	MAS = 10.00 (m)	190.00	190.00				MinPts	
	10977.54	32.81	10966.28	10944.73	1142.53	MAS = 10.00 (m)	2020.00	2001.30				MinPt-O-SF	
	1525.38	286.51	1333.84	1238.87	8.02	OSF1.50	17281.61	7018.00				MinPts	
Datienna 24-12 GYRO 0' to 7305' - PR (Def Survey)													
	1883.97	32.81	1882.16	1851.16	N/A	MAS = 10.00 (m)	0.00	0.00				Surface	Pass
	1883.94	32.81	1882.11	1851.14	88573.88	MAS = 10.00 (m)	20.00	20.00				WRP	
	1883.89	32.81	1881.74	1851.08	5531.74	MAS = 10.00 (m)	120.00	120.00				MinPts	
	1884.03	32.81	1881.60	1851.23	3032.47	MAS = 10.00 (m)	190.00	190.00				MINPT-O-EOU	
	1867.23	32.81	1860.35	1834.42	367.91	MAS = 10.00 (m)	1030.00	1023.94				MinPts	
	1867.30	32.81	1860.30	1834.50	359.57	MAS = 10.00 (m)	1050.00	1043.68				MINPT-O-EOU	
	2653.74	46.62	2622.13	2607.12	88.37	OSF1.50	5970.00	5900.87				MinPt-O-SF	
	2651.66	47.29	2619.59	2604.36	87.01	OSF1.50	6340.00	6266.14				MinPt-CiCt	
	1888.21	79.34	1834.78	1808.87	36.41	OSF1.50	8750.00	7018.00				MinPt-CiCt	
	1888.37	79.70	1834.70	1808.67	36.24	OSF1.50	8770.00	7018.00				MINPT-O-EOU	
	1888.52	79.88	1834.74	1808.65	36.16	OSF1.50	8780.00	7018.00				MinPt-O-ADP	
	1957.13	87.08	1898.54	1870.05	34.32	OSF1.50	9260.00	7018.00				MinPt-O-SF	
	8773.69	82.71	8718.01	8690.98	162.23	OSF1.50	17281.61	7018.00				TD	
Skyway 22-11 - Plan (Def Plan)													
	11114.14	32.81	11112.22	11081.33	102079.71	MAS = 10.00 (m)	0.00	0.00				Surface	Pass
	11114.14	32.81	11112.17	11081.33	72491.39	MAS = 10.00 (m)	20.00	20.00				WRP	
	2018.94	265.73	1841.25	1753.21	11.46	OSF1.50	16400.00	7018.00				MinPt-CiCt	
	2019.12	266.42	1840.98	1752.71	11.43	OSF1.50	16430.00	7018.00				MINPT-O-EOU	
	2019.49	266.84	1841.06	1752.65	11.41	OSF1.50	16450.00	7018.00				MinPt-O-ADP	
	2027.58	269.10	1847.64	1758.47	11.36	OSF1.50	16590.00	7018.00				MinPt-O-SF	
	2201.81	263.68	2025.48	1938.12	12.59	OSF1.50	17281.61	7018.00				TD	
Sheep 9-12 GYRO 0' to 7441' - PR (Def Survey)													
	3101.91	32.81	3100.10	3069.10	N/A	MAS = 10.00 (m)	0.00	0.00				Surface	Pass
	3101.90	32.81	3100.09	3069.09	705506.87	MAS = 10.00 (m)	10.00	10.00				MinPts	
	3101.91	32.81	3100.07	3069.10	116644.05	MAS = 10.00 (m)	20.00	20.00				WRP	
	3101.97	32.81	3100.04	3069.16	27100.10	MAS = 10.00 (m)	50.00	50.00				MINPT-O-EOU	
	3099.90	32.81	3093.37	3067.09	656.86	MAS = 10.00 (m)	950.00	944.96				MinPts	
	2892.43	33.98	2869.24	2858.45	133.93	OSF1.50	4470.00	4420.02				MinPt-CiCt	
	2892.51	34.26	2869.14	2858.25	132.80	OSF1.50	4510.00	4459.51				MINPT-O-EOU	
	2892.63	34.40	2869.16	2858.23	132.24	OSF1.50	4530.00	4479.25				MinPt-O-ADP	
	2783.80	63.24	2741.11	2720.56	67.71	OSF1.50	8070.00	7018.00				MinPt-CiCt	
	2783.92	63.68	2740.94	2720.25	67.24	OSF1.50	8100.00	7018.00				MINPT-O-EOU	
	2784.04	63.82	2740.95	2720.21	67.08	OSF1.50	8110.00	7018.00				MinPt-O-ADP	
	3033.94	79.25	2980.57	2954.68	58.58	OSF1.50	9280.00	7018.00				MinPt-O-SF	
	9660.67	91.41	9599.20	9569.26	161.33	OSF1.50	17281.61	7018.00				TD	
Sheep 10-12 GYRO 0' to 7371' - PR (Def Survey)													
	3143.88	32.81	3142.07	3111.08	N/A	MAS = 10.00 (m)	0.00	0.00				Surface	Pass
	3143.87	32.81	3142.03	3111.06	123382.18	MAS = 10.00 (m)	20.00	20.00				WRP	
	3126.36	32.81	3115.72	3093.55	353.86	MAS = 10.00 (m)	1790.00	1774.24				MINPT-O-EOU	
	3120.00	32.81	3108.66	3087.20	320.34	MAS = 10.00 (m)	2430.00	2406.06				MinPts	
	3120.01	32.81	3108.66	3087.21	319.80	MAS = 10.00 (m)	2440.00	2415.94				MINPT-O-EOU	
	3679.64	37.56	3654.07	3642.08	153.42	OSF1.50	5650.00	5584.95				MinPt-O-ADP	
	3680.49	37.89	3654.70	3642.61	152.09	OSF1.50	5800.00	5733.04				MINPT-O-EOU	
	3680.57	37.98	3654.72	3642.59	151.69	OSF1.50	5830.00	5762.65				MinPt-O-ADP	
	2784.63	84.52	2727.75	2700.11	50.34	OSF1.50	9320.00	7018.00				MinPt-CiCt	
	2784.94	85.38	2727.49	2699.56	49.84	OSF1.50	9360.00	7018.00				MINPT-O-EOU	
	2785.31	85.80	2727.57	2699.51	49.60	OSF1.50	9380.00	7018.00				MinPt-O-ADP	
	2959.05	101.28	2891.00	2857.77	44.51	OSF1.50	10320.00	7018.00				MinPt-O-SF	
	8481.27	100.18	8413.94	8381.09	129.03	OSF1.50	17281.61	7018.00				TD	

Offset Trajectory	Separation			Allow Dev. (ft)	Sep. Fact.	Controlling Rule	Reference Trajectory		Risk Level			Alert	Status
	Ct-Ct (ft)	MAS (ft)	EOU (ft)				MD (ft)	TVD (ft)	Alert	Minor	Major		
Sheep 16-12 GYRO 0' to 7793' - PR (Def Survey)													Pass
3106.40	32.81	3104.59	3073.59	N/A		MAS = 10.00 (m)	0.00	0.00					Surface
3106.39	32.81	3104.58	3073.58	931706.11		MAS = 10.00 (m)	10.00	10.00					MinPts
3106.40	32.81	3104.57	3073.59	148772.29		MAS = 10.00 (m)	20.00	20.00					WRP
3106.42	32.81	3104.57	3073.61	70221.46		MAS = 10.00 (m)	30.00	30.00					MINPT-O-EOU
3100.39	32.81	3093.30	3067.59	586.57		MAS = 10.00 (m)	1120.00	1112.79					MinPts
3100.53	32.81	3093.13	3067.72	555.26		MAS = 10.00 (m)	1180.00	1172.02					MINPT-O-EOU
4038.23	47.28	4006.17	3990.95	132.56		OSF1.50	5780.00	5713.29					MinPt-O-SF
4189.32	56.52	4151.10	4132.80	114.38		OSF1.50	6190.00	6118.06					MinPts
4103.61	67.37	4058.16	4036.24	93.56		OSF1.50	8080.00	7018.00					MinPt-CtCt
4103.75	67.71	4058.07	4036.04	93.08		OSF1.50	8110.00	7018.00					MINPT-O-EOU
4103.84	67.82	4058.09	4036.02	92.92		OSF1.50	8120.00	7018.00					MinPt-O-ADP
4796.81	100.15	4729.51	4696.66	72.99		OSF1.50	10560.00	7018.00					MinPt-O-SF
10079.78	107.45	10007.61	9972.33	142.83		OSF1.50	17281.61	7018.00					TD
Sheep 15-12 GYRO 0' to 7701' - PR (Def Survey)													Pass
3153.39	32.81	3151.58	3120.58	N/A		MAS = 10.00 (m)	0.00	0.00					Surface
3153.38	32.81	3151.54	3120.57	115906.78		MAS = 10.00 (m)	20.00	20.00					WRP
3153.26	32.81	3150.63	3120.46	3821.33		MAS = 10.00 (m)	230.00	230.00					MinPts
3141.85	32.81	3135.27	3109.04	659.23		MAS = 10.00 (m)	1060.00	1053.56					MinPts
3141.99	32.81	3135.15	3109.18	625.24		MAS = 10.00 (m)	1110.00	1102.92					MINPT-O-EOU
4722.06	50.95	4687.55	4671.10	143.49		OSF1.50	6550.00	6473.41					MinPts
4071.14	89.65	4010.83	3981.49	69.33		OSF1.50	9320.00	7018.00					MinPt-CtCt
4071.54	90.95	4010.38	3980.59	68.33		OSF1.50	9380.00	7018.00					MINPT-O-EOU
4072.08	91.59	4010.48	3980.48	67.85		OSF1.50	9410.00	7018.00					MinPt-O-ADP
4534.82	124.98	4450.96	4409.84	55.11		OSF1.50	11320.00	7018.00					MinPt-O-SF
9006.63	141.95	8911.46	8864.68	96.25		OSF1.50	17281.61	7018.00					TD
Sheep 20-12 GYRO 0' to 7464' - PR (Def Survey)													Pass
3167.04	32.81	3165.23	3134.23	N/A		MAS = 10.00 (m)	0.00	0.00					Surface
3167.03	32.81	3165.22	3134.22	701413.52		MAS = 10.00 (m)	10.00	10.00					MinPts
3167.04	32.81	3165.20	3134.23	116465.71		MAS = 10.00 (m)	20.00	20.00					WRP
3167.13	32.81	3165.14	3134.32	17682.17		MAS = 10.00 (m)	70.00	70.00					MINPT-O-EOU
3163.18	32.81	3154.02	3130.37	430.34		MAS = 10.00 (m)	1280.00	1270.75					MinPts
3163.38	32.81	3153.80	3130.57	406.82		MAS = 10.00 (m)	1350.00	1339.85					MINPT-O-EOU
3812.16	44.97	3781.65	3767.19	131.80		OSF1.50	5490.00	5426.99					MinPt-O-ADP
3433.42	76.07	3382.17	3357.35	69.13		OSF1.50	8730.00	7018.00					MinPt-CtCt
3433.62	76.78	3381.90	3356.84	68.48		OSF1.50	8770.00	7018.00					MINPT-O-EOU
3433.89	77.13	3381.93	3356.76	68.17		OSF1.50	8790.00	7018.00					MinPt-O-ADP
3790.76	100.65	3723.12	3690.11	57.38		OSF1.50	10340.00	7018.00					MinPt-O-SF
9265.23	116.60	9186.97	9148.64	120.84		OSF1.50	17281.61	7018.00					TD