

**Site: Prosper Farms
4-65 13-14 1H
Location ID: 437388**

- Disturbed Area
- Gravel Pad
- Wells

ConocoPhillips

Author: Maxwell Blair

User Name: farkas

Scale: 1:2,000

Date: 6/11/2019

0 80 160 320 Feet

0 0.01 0.02 0.04 Miles

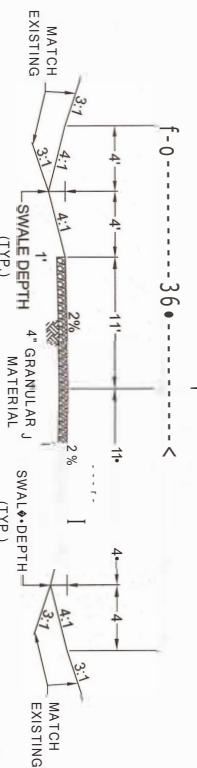
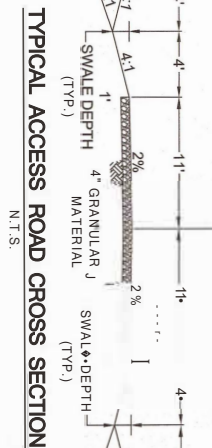
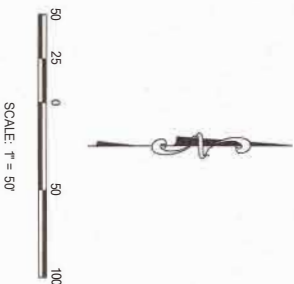
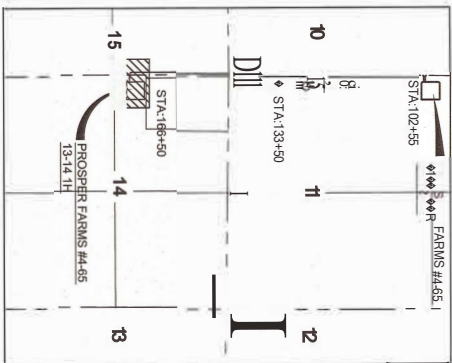
Coordinate System: NAD 1927 StatePlane Colorado Central FIPS 0502
Units: US Feet

DISCLAIMER: NEITHER CONOCOPHILLIPS COMPANY (COPC)
NOR ANY OF COPC'S REPRESENTATIVES MAKE ANY
REPRESENTATION OR WARRANTY, EXPRESS OR IMPLIED, AS TO
THE QUALITY, ACCURACY, COMPLETENESS OF THE
INFORMATION CONTAINED HEREIN. This information is being
furnished by COPC and COPC's Representatives as a convenience only,
any reliance on or use of is at the sole risk of the user.

S:\ARC_GIS_DATA\COGCC Surveys -06-07-19\06-10-19_COGCC_Surveyed_Sites.mxd

**Location: Propser Farms 4-65 13-14 1H
Size: 2.75 acres**

**Location: Prosper Farms 4-65 13-14 1H
Size: 3.73 acres**



NOTES:
1. SEE THE ANNAPOLIS COUNTY GESC PLAN STANDARD NOTES AND DETAILS.
2. ALL DIMENSIONS ARE SHOWN UNLESS OTHERWISE NOTED.
AND ELEVATIONS OF BMP NAMES AND SYMBOLS PART OF FIELD WIDE REPORT.
QUANTITIES:
EXISTING GRADE AT WELL HEAD = 5691.4
PAD SITE ELEVATION= 5690.8 (GROUND), 5691.3 (GRAVEL)
CUT SLOPES = 3:1
DITCH SLOPES = 3:1
TOPSOIL = 3.128 CY
TOTAL CUT = 3.584 CY DOES NOT INCLUDE TOPSOIL
TOTAL FILL = 3.320 CY (INCLUDES 10% ADJUSTMENT FOR COMPACTION)
GRAVEL BASE AT PAD DEPTH = 2.95 CY
TOTAL DISTURBED AREA = 72 ACRES INCLUDING ACCESS ROADWAY
(SEE ATTACHED QUANTITIES) (COVER SHEET).
3. ALL DIMENSION DITCHES TO BE UNLINED
4. ALL DIMENSION DITCHES OF THE CRUSHED ROCK AROUND THE SEDIMENT BASIN RISER
PIPE IS LARGER THAN THE HOSE DIAMETER.
5. ALL BMPs ARE FINAL UNLESS DASHED LINE TYPE. DASHED LINE TYPE BMPs ARE INTERIM.
6. REMOVAL OF EXIST. BMPs SHALL ONLY OCCUR AFTER ALL DISTURBED AREAS TRAVEL
INSPECTOR.

COUNTY ENGINEER

SOILS:

SEDIMENTS TRAP/BASIN:

SEDIMENT BASIN: TRIBUTARY AREA IS 1.8 ACRES WHICH IS MORE THAN 1 ACRE

SEDIMENT BASIN. TRIBUTARY AREA IS 1.8 ACRES.
THEREFORE USE 22"W X 44"L X 4'0", CL = 4', HD = 5/8"

DIVERSION DITCH CAPACITY: 3.8 CFS @ 0.25%

NO.	DETAIL SHEET	NO.	B.M.P. LEGEND
1	○	(u)	CHECK DM
2	○	(u)	COMPOST BLANKET
3	○	(u)	COMPOST FILTER BED
4	○	(u)	CONCRETE WASHOUT AREA
5	○	(u)	CONSTRUCTION FENCE
6	○	(u)	CONSTRUCTION BARRIERS
7	○	(u)	CURB SOCK-INLET PROTECTION
8	○	(u)	DEWATERING
9	○	(u)	DIVERSION DITCH
10	○	(u)	DROPPON CONTROL BLANKET
11	○	(u)	FLEXIBLE GROWTH MEDIUM
12	○	(u)	INLET PROTECTION
13	○	(u)	REINFORCED CHECK DAM
14	○	(u)	REINFORCED ROCK #15M
15	○	(u)	RR FOR OLDEST PROTECTION
16	○	(u)	SEDIMENT BASIN
17	○	(u)	SEGMENT CONTROL LOG
18	○	(u)	SEDIMENT TRAP
19	○	(u)	SEEDING AND MULCHING
20	○	(u)	SILT FENCE
21	○	(u)	STABILIZED STRONG AREA
22	○	(u)	SLURRY REPLENISHING
23	○	(u)	TEMPORARY SLOPE DRAIN
24	○	(u)	TEMPORARY STREAM CROSSING
25	○	(u)	TRAPPING
26	○	(u)	VEHICLE TRAPPING CONTROL
27	○	(u)	W/IC WILL, WHEEL WASH
28	○	(u)	ROCK AND RIPRAP GRADATIONS
29	○	(u)	DATE OF CONSTRUCTION

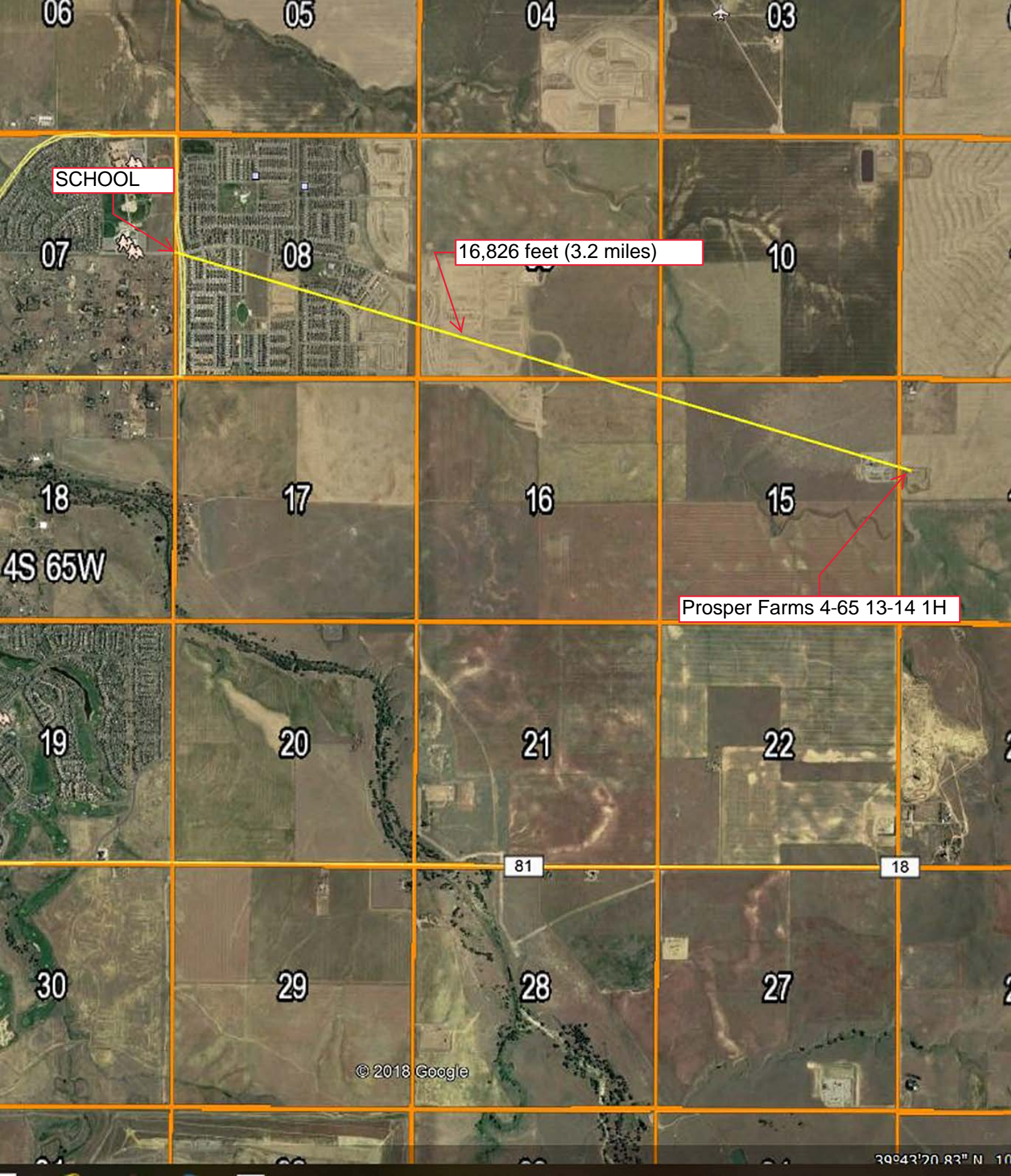
SCALE: 1" = 1' WELL

PROSPER FARMS 4-65 13-14 1H

Well Site Photos







SCHOOL

16,826 feet (3.2 miles)

Prosper Farms 4-65 13-14 1H