



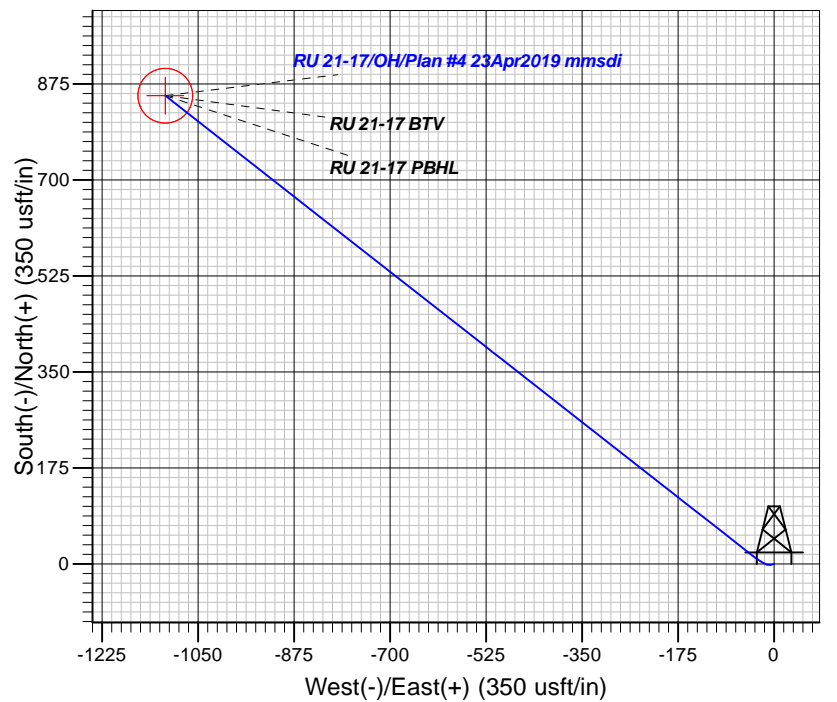
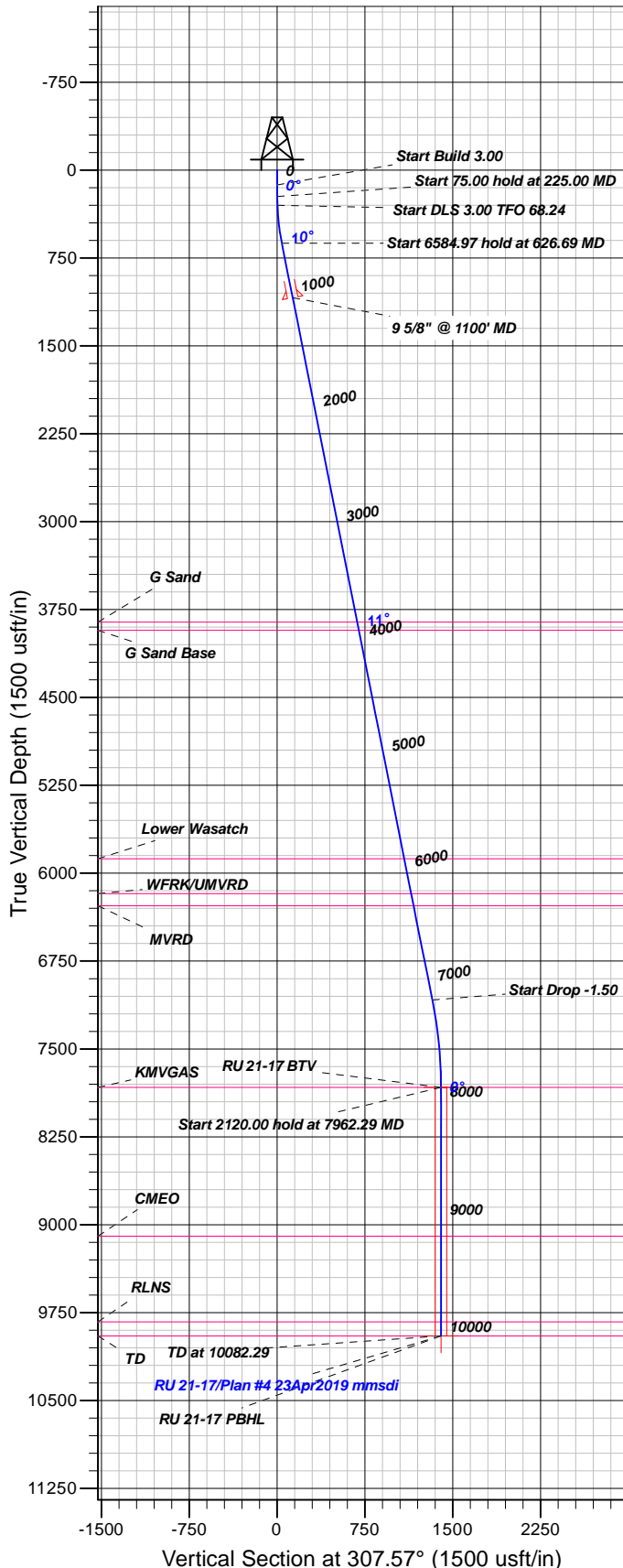
Azimuths to True North  
Magnetic North: 9.30°

Magnetic Field  
Strength: 51715.5nT  
Dip Angle: 65.63°  
Date: 2/9/2017  
Model: HDGM

## Well Details: RU 21-17

GL 7864' RKB 24' @ 7888.00usft (H&P 318)

+N/-S	+E/-W	Northing	Easting	Latitude	Longitude	Slot
0.00	0.00	1596983.00	2351763.40	39.4499991	-107.7958224	RU 21-17



## FORMATION TOP DETAILS

TVDPATH	MDPATH	FORMATION
3857.00	3923.17	G Sand
3927.00	3994.55	G Sand Base
5876.00	5981.79	Lower Wasatch
6175.00	6286.66	WFRK/UMVRD
6279.00	6392.70	MVRD
7828.00	7962.29	KMVGAS
9098.00	9232.29	CMEO
9828.00	9962.29	RLNS
9948.00	10082.29	TD

Plan: Plan #4 23Apr2019 mmsdi

17:10, April 24 2019  
Created By: Mel Mireles

PROJECT DETAILS: Garfield County, CO NAD83

Geodetic System: US State Plane 1983  
Datum: North American Datum 1983  
Ellipsoid: GRS 1980  
Zone: Colorado Central Zone

System Datum: Mean Sea Level

## CASING DETAILS

TVD	MD	Name	Size
1088.16	1100.00	9 5/8" @ 1100' MD	9.62

## SECTION DETAILS

Sec	MD	Inc	Azi	TVD	+N/-S	+E/-W	Dleg	TFace	Vsect	Target
1	0.00	0.00	0.00	0.00	0.00	0.00	0.00	0.00	0.00	
2	125.00	0.00	0.00	125.00	0.00	0.00	0.00	0.00	0.00	
3	225.00	3.00	254.00	224.95	-0.72	-2.52	3.00	254.00	1.55	
4	300.00	3.00	254.00	299.85	-1.80	-6.29	0.00	0.00	3.89	
5	626.69	11.26	308.07	623.96	15.55	-39.70	3.00	68.24	40.95	
6	7211.66	11.26	308.07	7082.19	808.30	-1051.94	0.00	0.00	1326.63	
7	7962.29	0.00	0.00	7828.00	853.63	-1109.82	1.50	180.00	1400.14	RU 21-17 BTV
8	10082.29	0.00	0.00	9948.00	853.63	-1109.82	0.00	0.00	1400.14	RU 21-17 PBHL

## DESIGN TARGET DETAILS

Name	TVD	+N/-S	+E/-W	Northing	Easting	Latitude	Longitude	Shape
RU 21-17 BTV	7828.00	853.63	-1109.82	1597864.40	2350675.50	39.4523427	-107.7997528	Circle (Radius: 50.00)
- plan hits target center								
RU 21-17 PBHL	9948.00	853.63	-1109.82	1597864.40	2350675.50	39.4523427	-107.7997528	Point
- plan hits target center								



# **TEP Rocky Mountain LLC**

**Garfield County, CO NAD83**

**RU 31-17 Pad**

**RU 21-17 - Slot RU 21-17**

**OH**

**Plan: Plan #4 23Apr2019 mmsdi**

## **Standard Planning Report**

**24 April, 2019**



<b>Database:</b>	Grand Junction District	<b>Local Co-ordinate Reference:</b>	Well RU 21-17 - Slot RU 21-17
<b>Company:</b>	TEP Rocky Mountain LLC	<b>TVD Reference:</b>	GL 7864' RKB 24' @ 7888.00usft (H&P 318)
<b>Project:</b>	Garfield County, CO NAD83	<b>MD Reference:</b>	GL 7864' RKB 24' @ 7888.00usft (H&P 318)
<b>Site:</b>	RU 31-17 Pad	<b>North Reference:</b>	True
<b>Well:</b>	RU 21-17	<b>Survey Calculation Method:</b>	Minimum Curvature
<b>Wellbore:</b>	OH		
<b>Design:</b>	Plan #4 23Apr2019 mmsdi		

<b>Project</b>	Garfield County, CO NAD83		
<b>Map System:</b>	US State Plane 1983	<b>System Datum:</b>	Mean Sea Level
<b>Geo Datum:</b>	North American Datum 1983		
<b>Map Zone:</b>	Colorado Central Zone		

Site	RU 31-17 Pad				
Site Position:		Northing:	1,596,940.40 usft	Latitude:	39.4498852
From:	Map	Easting:	2,351,805.70 usft	Longitude:	-107.7956689
Position Uncertainty:	0.00 usft	Slot Radius:	13.20 in	Grid Convergence:	-1.45

Well	RU 21-17 - Slot RU 21-17					
Well Position	+N/-S	41.52 usft	Northing:	1,596,983.00 usft	Latitude:	39.4499992
	+E/-W	-43.36 usft	Easting:	2,351,763.40 usft	Longitude:	-107.7958225
Position Uncertainty		0.00 usft	Wellhead Elevation:	0.00 usft	Ground Level:	7,864.00 usft

<b>Wellbore</b>	OH				
<b>Magnetics</b>	<b>Model Name</b>	<b>Sample Date</b>	<b>Declination (°)</b>	<b>Dip Angle (°)</b>	<b>Field Strength (nT)</b>
	HDGM	2/9/2017	9.30	65.63	51,716

<b>Design</b>	Plan #4 23Apr2019 mmsdi			
<b>Audit Notes:</b>				
<b>Version:</b>	<b>Phase:</b>	PLAN	<b>Tie On Depth:</b>	0.00
<b>Vertical Section:</b>	<b>Depth From (TVD) (usft)</b>	<b>+N/-S (usft)</b>	<b>+E/-W (usft)</b>	<b>Direction (°)</b>
	0.00	0.00	0.00	307.57

<b>Plan Sections</b>										
Measured Depth (usft)	Inclination (°)	Azimuth (°)	Vertical Depth (usft)	+N/-S (usft)	+E/-W (usft)	Dogleg Rate (°/100usft)	Build Rate (°/100usft)	Turn Rate (°/100usft)	TFO (°)	Target
0.00	0.00	0.00	0.00	0.00	0.00	0.00	0.00	0.00	0.00	
125.00	0.00	0.00	125.00	0.00	0.00	0.00	0.00	0.00	0.00	
225.00	3.00	254.00	224.95	-0.72	-2.52	3.00	3.00	0.00	254.00	
300.00	3.00	254.00	299.85	-1.80	-6.29	0.00	0.00	0.00	0.00	
626.69	11.26	308.07	623.96	15.55	-39.70	3.00	2.53	16.55	68.24	
7,211.66	11.26	308.07	7,082.19	808.30	-1,051.94	0.00	0.00	0.00	0.00	
7,962.29	0.00	0.00	7,828.00	853.63	-1,109.82	1.50	-1.50	0.00	180.00	RU 21-17 BTV
10,082.29	0.00	0.00	9,948.00	853.63	-1,109.82	0.00	0.00	0.00	0.00	RU 21-17 PBHL

<b>Database:</b>	Grand Junction District	<b>Local Co-ordinate Reference:</b>	Well RU 21-17 - Slot RU 21-17
<b>Company:</b>	TEP Rocky Mountain LLC	<b>TVD Reference:</b>	GL 7864' RKB 24' @ 7888.00usft (H&P 318)
<b>Project:</b>	Garfield County, CO NAD83	<b>MD Reference:</b>	GL 7864' RKB 24' @ 7888.00usft (H&P 318)
<b>Site:</b>	RU 31-17 Pad	<b>North Reference:</b>	True
<b>Well:</b>	RU 21-17	<b>Survey Calculation Method:</b>	Minimum Curvature
<b>Wellbore:</b>	OH		
<b>Design:</b>	Plan #4 23Apr2019 mmsdi		

Planned Survey									
Measured Depth (usft)	Inclination (°)	Azimuth (°)	Vertical Depth (usft)	+N/-S (usft)	+E/-W (usft)	Vertical Section (usft)	Dogleg Rate (°/100usft)	Build Rate (°/100usft)	Turn Rate (°/100usft)
0.00	0.00	0.00	0.00	0.00	0.00	0.00	0.00	0.00	0.00
100.00	0.00	0.00	100.00	0.00	0.00	0.00	0.00	0.00	0.00
125.00	0.00	0.00	125.00	0.00	0.00	0.00	0.00	0.00	0.00
<b>Start Build 3.00</b>									
200.00	2.25	254.00	199.98	-0.41	-1.42	0.87	3.00	3.00	0.00
225.00	3.00	254.00	224.95	-0.72	-2.52	1.55	3.00	3.00	0.00
<b>Start 75.00 hold at 225.00 MD</b>									
300.00	3.00	254.00	299.85	-1.80	-6.29	3.89	0.00	0.00	0.00
<b>Start DLS 3.00 TFO 68.24</b>									
400.00	4.97	288.16	399.62	-1.18	-12.92	9.52	3.00	1.97	34.16
500.00	7.64	300.93	499.01	3.59	-22.73	20.21	3.00	2.67	12.78
600.00	10.49	306.97	597.75	12.48	-35.71	35.91	3.00	2.85	6.04
626.69	11.26	308.07	623.96	15.55	-39.70	40.95	3.00	2.90	4.10
<b>Start 6584.97 hold at 626.69 MD</b>									
700.00	11.26	308.07	695.86	24.37	-50.97	55.26	0.00	0.00	0.00
800.00	11.26	308.07	793.94	36.41	-66.34	74.78	0.00	0.00	0.00
900.00	11.26	308.07	892.01	48.45	-81.71	94.31	0.00	0.00	0.00
1,000.00	11.26	308.07	990.09	60.49	-97.08	113.83	0.00	0.00	0.00
1,100.00	11.26	308.07	1,088.16	72.53	-112.46	133.36	0.00	0.00	0.00
<b>9 5/8" @ 1100' MD</b>									
1,200.00	11.26	308.07	1,186.24	84.57	-127.83	152.88	0.00	0.00	0.00
1,300.00	11.26	308.07	1,284.32	96.61	-143.20	172.41	0.00	0.00	0.00
1,400.00	11.26	308.07	1,382.39	108.64	-158.57	191.93	0.00	0.00	0.00
1,500.00	11.26	308.07	1,480.47	120.68	-173.94	211.45	0.00	0.00	0.00
1,600.00	11.26	308.07	1,578.54	132.72	-189.32	230.98	0.00	0.00	0.00
1,700.00	11.26	308.07	1,676.62	144.76	-204.69	250.50	0.00	0.00	0.00
1,800.00	11.26	308.07	1,774.69	156.80	-220.06	270.03	0.00	0.00	0.00
1,900.00	11.26	308.07	1,872.77	168.84	-235.43	289.55	0.00	0.00	0.00
2,000.00	11.26	308.07	1,970.84	180.88	-250.80	309.08	0.00	0.00	0.00
2,100.00	11.26	308.07	2,068.92	192.92	-266.18	328.60	0.00	0.00	0.00
2,200.00	11.26	308.07	2,166.99	204.96	-281.55	348.13	0.00	0.00	0.00
2,300.00	11.26	308.07	2,265.07	216.99	-296.92	367.65	0.00	0.00	0.00
2,400.00	11.26	308.07	2,363.14	229.03	-312.29	387.17	0.00	0.00	0.00
2,500.00	11.26	308.07	2,461.22	241.07	-327.66	406.70	0.00	0.00	0.00
2,600.00	11.26	308.07	2,559.29	253.11	-343.04	426.22	0.00	0.00	0.00
2,700.00	11.26	308.07	2,657.37	265.15	-358.41	445.75	0.00	0.00	0.00
2,800.00	11.26	308.07	2,755.45	277.19	-373.78	465.27	0.00	0.00	0.00
2,900.00	11.26	308.07	2,853.52	289.23	-389.15	484.80	0.00	0.00	0.00
3,000.00	11.26	308.07	2,951.60	301.27	-404.52	504.32	0.00	0.00	0.00
3,100.00	11.26	308.07	3,049.67	313.30	-419.90	523.85	0.00	0.00	0.00
3,200.00	11.26	308.07	3,147.75	325.34	-435.27	543.37	0.00	0.00	0.00
3,300.00	11.26	308.07	3,245.82	337.38	-450.64	562.89	0.00	0.00	0.00
3,400.00	11.26	308.07	3,343.90	349.42	-466.01	582.42	0.00	0.00	0.00
3,500.00	11.26	308.07	3,441.97	361.46	-481.39	601.94	0.00	0.00	0.00
3,600.00	11.26	308.07	3,540.05	373.50	-496.76	621.47	0.00	0.00	0.00
3,700.00	11.26	308.07	3,638.12	385.54	-512.13	640.99	0.00	0.00	0.00
3,800.00	11.26	308.07	3,736.20	397.58	-527.50	660.52	0.00	0.00	0.00
3,900.00	11.26	308.07	3,834.27	409.61	-542.87	680.04	0.00	0.00	0.00
3,923.17	11.26	308.07	3,857.00	412.40	-546.44	684.57	0.00	0.00	0.00
<b>G Sand</b>									
3,994.55	11.26	308.07	3,927.00	421.00	-557.41	698.50	0.00	0.00	0.00
<b>G Sand Base</b>									
4,000.00	11.26	308.07	3,932.35	421.65	-558.25	699.57	0.00	0.00	0.00

<b>Database:</b>	Grand Junction District	<b>Local Co-ordinate Reference:</b>	Well RU 21-17 - Slot RU 21-17
<b>Company:</b>	TEP Rocky Mountain LLC	<b>TVD Reference:</b>	GL 7864' RKB 24' @ 7888.00usft (H&P 318)
<b>Project:</b>	Garfield County, CO NAD83	<b>MD Reference:</b>	GL 7864' RKB 24' @ 7888.00usft (H&P 318)
<b>Site:</b>	RU 31-17 Pad	<b>North Reference:</b>	True
<b>Well:</b>	RU 21-17	<b>Survey Calculation Method:</b>	Minimum Curvature
<b>Wellbore:</b>	OH		
<b>Design:</b>	Plan #4 23Apr2019 mmsdi		

Planned Survey										
Measured Depth (usft)	Inclination (°)	Azimuth (°)	Vertical Depth (usft)	+N/-S (usft)	+E/-W (usft)	Vertical Section (usft)	Dogleg Rate (°/100usft)	Build Rate (°/100usft)	Turn Rate (°/100usft)	
4,100.00	11.26	308.07	4,030.42	433.69	-573.62	719.09	0.00	0.00	0.00	
4,200.00	11.26	308.07	4,128.50	445.73	-588.99	738.62	0.00	0.00	0.00	
4,300.00	11.26	308.07	4,226.57	457.77	-604.36	758.14	0.00	0.00	0.00	
4,400.00	11.26	308.07	4,324.65	469.81	-619.73	777.66	0.00	0.00	0.00	
4,500.00	11.26	308.07	4,422.73	481.85	-635.11	797.19	0.00	0.00	0.00	
4,600.00	11.26	308.07	4,520.80	493.89	-650.48	816.71	0.00	0.00	0.00	
4,700.00	11.26	308.07	4,618.88	505.93	-665.85	836.24	0.00	0.00	0.00	
4,800.00	11.26	308.07	4,716.95	517.96	-681.22	855.76	0.00	0.00	0.00	
4,900.00	11.26	308.07	4,815.03	530.00	-696.59	875.29	0.00	0.00	0.00	
5,000.00	11.26	308.07	4,913.10	542.04	-711.97	894.81	0.00	0.00	0.00	
5,100.00	11.26	308.07	5,011.18	554.08	-727.34	914.34	0.00	0.00	0.00	
5,200.00	11.26	308.07	5,109.25	566.12	-742.71	933.86	0.00	0.00	0.00	
5,300.00	11.26	308.07	5,207.33	578.16	-758.08	953.38	0.00	0.00	0.00	
5,400.00	11.26	308.07	5,305.40	590.20	-773.45	972.91	0.00	0.00	0.00	
5,500.00	11.26	308.07	5,403.48	602.24	-788.83	992.43	0.00	0.00	0.00	
5,600.00	11.26	308.07	5,501.55	614.27	-804.20	1,011.96	0.00	0.00	0.00	
5,700.00	11.26	308.07	5,599.63	626.31	-819.57	1,031.48	0.00	0.00	0.00	
5,800.00	11.26	308.07	5,697.70	638.35	-834.94	1,051.01	0.00	0.00	0.00	
5,900.00	11.26	308.07	5,795.78	650.39	-850.32	1,070.53	0.00	0.00	0.00	
5,981.79	11.26	308.07	5,876.00	660.24	-862.89	1,086.50	0.00	0.00	0.00	
<b>Lower Wasatch</b>										
6,000.00	11.26	308.07	5,893.85	662.43	-865.69	1,090.06	0.00	0.00	0.00	
6,100.00	11.26	308.07	5,991.93	674.47	-881.06	1,109.58	0.00	0.00	0.00	
6,200.00	11.26	308.07	6,090.01	686.51	-896.43	1,129.10	0.00	0.00	0.00	
6,286.66	11.26	308.07	6,175.00	696.94	-909.75	1,146.02	0.00	0.00	0.00	
<b>WFRK/UMVRD</b>										
6,300.00	11.26	308.07	6,188.08	698.55	-911.80	1,148.63	0.00	0.00	0.00	
6,392.70	11.26	308.07	6,279.00	709.71	-926.05	1,166.73	0.00	0.00	0.00	
<b>MVRD</b>										
6,400.00	11.26	308.07	6,286.16	710.59	-927.18	1,168.15	0.00	0.00	0.00	
6,500.00	11.26	308.07	6,384.23	722.62	-942.55	1,187.68	0.00	0.00	0.00	
6,600.00	11.26	308.07	6,482.31	734.66	-957.92	1,207.20	0.00	0.00	0.00	
6,700.00	11.26	308.07	6,580.38	746.70	-973.29	1,226.73	0.00	0.00	0.00	
6,800.00	11.26	308.07	6,678.46	758.74	-988.66	1,246.25	0.00	0.00	0.00	
6,900.00	11.26	308.07	6,776.53	770.78	-1,004.04	1,265.78	0.00	0.00	0.00	
7,000.00	11.26	308.07	6,874.61	782.82	-1,019.41	1,285.30	0.00	0.00	0.00	
7,100.00	11.26	308.07	6,972.68	794.86	-1,034.78	1,304.82	0.00	0.00	0.00	
7,200.00	11.26	308.07	7,070.76	806.90	-1,050.15	1,324.35	0.00	0.00	0.00	
7,211.66	11.26	308.07	7,082.19	808.30	-1,051.94	1,326.63	0.00	0.00	0.00	
<b>Start Drop -1.50</b>										
7,300.00	9.93	308.07	7,169.03	818.32	-1,064.73	1,342.87	1.50	-1.50	0.00	
7,400.00	8.43	308.07	7,267.74	828.16	-1,077.30	1,358.83	1.50	-1.50	0.00	
7,500.00	6.93	308.07	7,366.84	836.40	-1,087.83	1,372.20	1.50	-1.50	0.00	
7,600.00	5.43	308.07	7,466.26	843.04	-1,096.31	1,382.97	1.50	-1.50	0.00	
7,700.00	3.93	308.07	7,565.92	848.08	-1,102.74	1,391.14	1.50	-1.50	0.00	
7,800.00	2.43	308.07	7,665.76	851.50	-1,107.11	1,396.69	1.50	-1.50	0.00	
7,900.00	0.93	308.07	7,765.72	853.32	-1,109.42	1,399.63	1.50	-1.50	0.00	
7,962.29	0.00	0.00	7,828.00	853.63	-1,109.82	1,400.14	1.50	-1.50	0.00	
<b>Start 2120.00 hold at 7962.29 MD - KMGAS - RU 21-17 BTV</b>										
8,000.00	0.00	0.00	7,865.71	853.63	-1,109.82	1,400.14	0.00	0.00	0.00	
8,100.00	0.00	0.00	7,965.71	853.63	-1,109.82	1,400.14	0.00	0.00	0.00	
8,200.00	0.00	0.00	8,065.71	853.63	-1,109.82	1,400.14	0.00	0.00	0.00	
8,300.00	0.00	0.00	8,165.71	853.63	-1,109.82	1,400.14	0.00	0.00	0.00	
8,400.00	0.00	0.00	8,265.71	853.63	-1,109.82	1,400.14	0.00	0.00	0.00	

<b>Database:</b>	Grand Junction District	<b>Local Co-ordinate Reference:</b>	Well RU 21-17 - Slot RU 21-17
<b>Company:</b>	TEP Rocky Mountain LLC	<b>TVD Reference:</b>	GL 7864' RKB 24' @ 7888.00usft (H&P 318)
<b>Project:</b>	Garfield County, CO NAD83	<b>MD Reference:</b>	GL 7864' RKB 24' @ 7888.00usft (H&P 318)
<b>Site:</b>	RU 31-17 Pad	<b>North Reference:</b>	True
<b>Well:</b>	RU 21-17	<b>Survey Calculation Method:</b>	Minimum Curvature
<b>Wellbore:</b>	OH		
<b>Design:</b>	Plan #4 23Apr2019 mmsdi		

Planned Survey									
Measured Depth (usft)	Inclination (°)	Azimuth (°)	Vertical Depth (usft)	+N/-S (usft)	+E/-W (usft)	Vertical Section (usft)	Dogleg Rate (°/100usft)	Build Rate (°/100usft)	Turn Rate (°/100usft)
8,500.00	0.00	0.00	8,365.71	853.63	-1,109.82	1,400.14	0.00	0.00	0.00
8,600.00	0.00	0.00	8,465.71	853.63	-1,109.82	1,400.14	0.00	0.00	0.00
8,700.00	0.00	0.00	8,565.71	853.63	-1,109.82	1,400.14	0.00	0.00	0.00
8,800.00	0.00	0.00	8,665.71	853.63	-1,109.82	1,400.14	0.00	0.00	0.00
8,900.00	0.00	0.00	8,765.71	853.63	-1,109.82	1,400.14	0.00	0.00	0.00
9,000.00	0.00	0.00	8,865.71	853.63	-1,109.82	1,400.14	0.00	0.00	0.00
9,100.00	0.00	0.00	8,965.71	853.63	-1,109.82	1,400.14	0.00	0.00	0.00
9,200.00	0.00	0.00	9,065.71	853.63	-1,109.82	1,400.14	0.00	0.00	0.00
9,232.29	0.00	0.00	9,098.00	853.63	-1,109.82	1,400.14	0.00	0.00	0.00
<b>CMEO</b>									
9,300.00	0.00	0.00	9,165.71	853.63	-1,109.82	1,400.14	0.00	0.00	0.00
9,400.00	0.00	0.00	9,265.71	853.63	-1,109.82	1,400.14	0.00	0.00	0.00
9,500.00	0.00	0.00	9,365.71	853.63	-1,109.82	1,400.14	0.00	0.00	0.00
9,600.00	0.00	0.00	9,465.71	853.63	-1,109.82	1,400.14	0.00	0.00	0.00
9,700.00	0.00	0.00	9,565.71	853.63	-1,109.82	1,400.14	0.00	0.00	0.00
9,800.00	0.00	0.00	9,665.71	853.63	-1,109.82	1,400.14	0.00	0.00	0.00
9,900.00	0.00	0.00	9,765.71	853.63	-1,109.82	1,400.14	0.00	0.00	0.00
9,962.29	0.00	0.00	9,828.00	853.63	-1,109.82	1,400.14	0.00	0.00	0.00
<b>RLNS</b>									
10,000.00	0.00	0.00	9,865.71	853.63	-1,109.82	1,400.14	0.00	0.00	0.00
10,082.29	0.00	0.00	9,948.00	853.63	-1,109.82	1,400.14	0.00	0.00	0.00
<b>TD at 10082.29 - TD - RU 21-17 PBHL</b>									

Design Targets									
Target Name	Dip Angle (°)	Dip Dir. (°)	TVD (usft)	+N/-S (usft)	+E/-W (usft)	Northing (usft)	Easting (usft)	Latitude	Longitude
- hit/miss target									
- Shape									
RU 21-17 BTV	0.00	0.00	7,828.00	853.63	-1,109.82	1,597,864.40	2,350,675.50	39.4523427	-107.7997528
- plan hits target center									
- Circle (radius 50.00)									
RU 21-17 PBHL	0.00	0.00	9,948.00	853.63	-1,109.82	1,597,864.40	2,350,675.50	39.4523427	-107.7997528
- plan hits target center									
- Point									

Casing Points					
Measured Depth (usft)	Vertical Depth (usft)	Name	Casing Diameter (in)	Hole Diameter (in)	
1,100.00	1,088.16	9 5/8" @ 1100' MD	9.62	9.62	

<b>Database:</b>	Grand Junction District	<b>Local Co-ordinate Reference:</b>	Well RU 21-17 - Slot RU 21-17
<b>Company:</b>	TEP Rocky Mountain LLC	<b>TVD Reference:</b>	GL 7864' RKB 24' @ 7888.00usft (H&P 318)
<b>Project:</b>	Garfield County, CO NAD83	<b>MD Reference:</b>	GL 7864' RKB 24' @ 7888.00usft (H&P 318)
<b>Site:</b>	RU 31-17 Pad	<b>North Reference:</b>	True
<b>Well:</b>	RU 21-17	<b>Survey Calculation Method:</b>	Minimum Curvature
<b>Wellbore:</b>	OH		
<b>Design:</b>	Plan #4 23Apr2019 mmsdi		

Formations						
Measured Depth (usft)	Vertical Depth (usft)	Name	Lithology	Dip (°)	Dip Direction (°)	
3,923.17	3,857.00	G Sand		0.00	0.00	
3,994.55	3,927.00	G Sand Base		0.00	0.00	
5,981.79	5,876.00	Lower Wasatch		0.00	0.00	
6,286.66	6,175.00	WFRK/UMVRD		0.00	0.00	
6,392.70	6,279.00	MVRD		0.00	0.00	
7,962.29	7,828.00	KMVGAS		0.00	0.00	
9,232.29	9,098.00	CMEO		0.00	0.00	
9,962.29	9,828.00	RLNS		0.00	0.00	
10,082.29	9,948.00	TD		0.00	0.00	

Plan Annotations					
Measured Depth (usft)	Vertical Depth (usft)	Local Coordinates			
		+N/-S (usft)	+E/-W (usft)	Comment	
125.00	125.00	0.00	0.00	Start Build 3.00	
225.00	224.95	-0.72	-2.52	Start 75.00 hold at 225.00 MD	
300.00	299.85	-1.80	-6.29	Start DLS 3.00 TFO 68.24	
626.69	623.96	15.55	-39.70	Start 6584.97 hold at 626.69 MD	
7,211.66	7,082.19	808.30	-1,051.94	Start Drop -1.50	
7,962.29	7,828.00	853.63	-1,109.82	Start 2120.00 hold at 7962.29 MD	
10,082.29	9,948.00	853.63	-1,109.82	TD at 10082.29	