

Federal RU 41-17

T. 7 S.

8

BOTTOM HOLE LOCATION

Triumph No. 28 **50 FSL, 663 FEL**
 Lat.: 39.452916°
 Long.: -107.790575°
 N.: 1598007.6 (COSP)
 E.: 2353271.6 (COSP)

Triumph No. 29

Triumph No. 12

SURFACE HOLE LOCATION

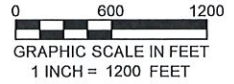
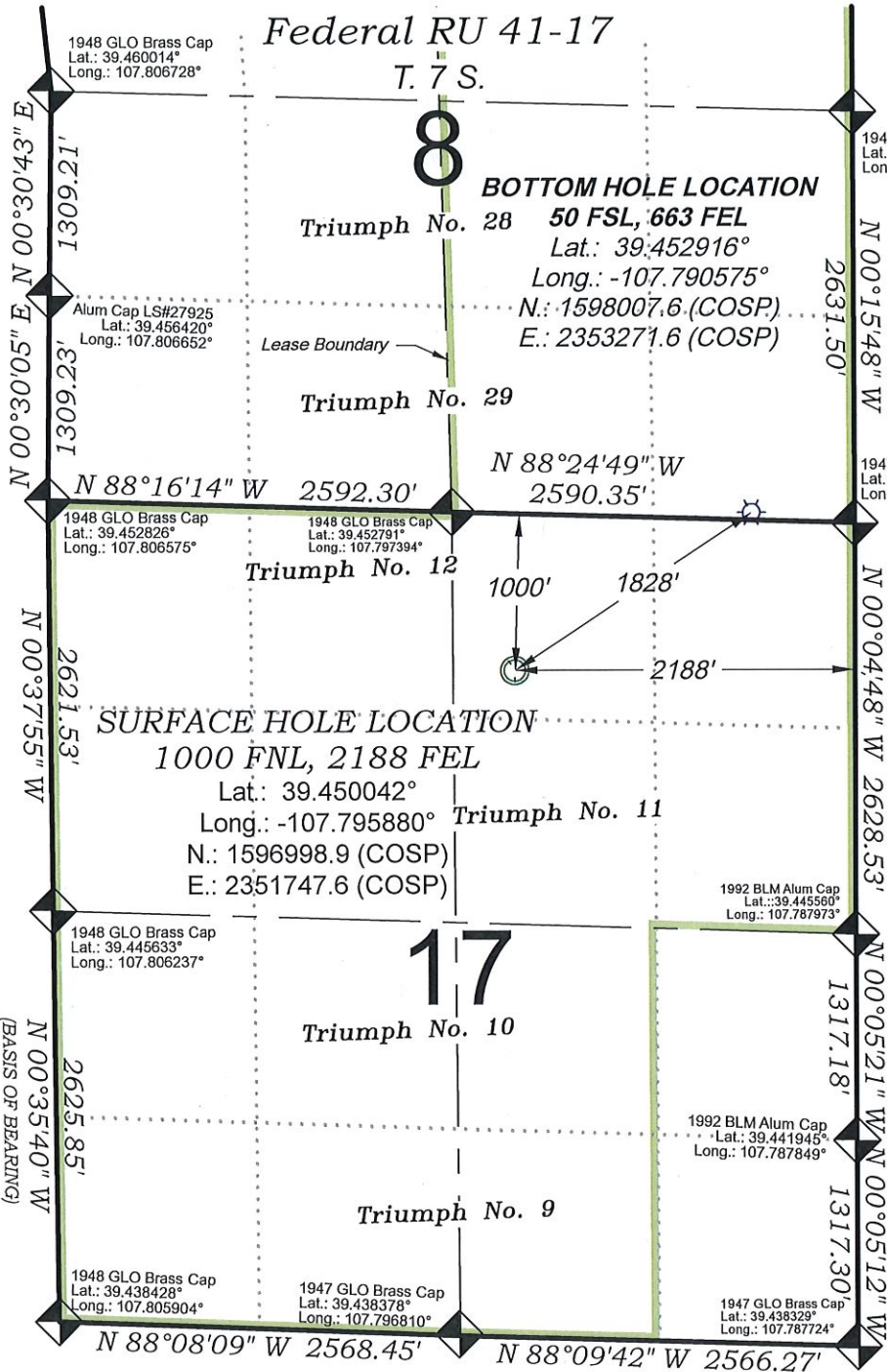
1000 FNL, 2188 FEL
 Lat.: 39.450042°
 Long.: -107.795880°
 N.: 1596998.9 (COSP)
 E.: 2351747.6 (COSP)

Triumph No. 11

17

Triumph No. 10

Triumph No. 9



THERE ARE NO VISIBLE IMPROVEMENTS WITHIN 500' OF THIS LOCATION

EXIST. GROUND ELEV.: 7863.7
 PROPOSED PAD ELEV.: 7858.8

REFERENCES

- 1) RE-SURVEY T. 7 S., R. 93 W., 6th P.M (BLM PLAT)
- 2) U.S.G.S. QUAD: North Mamm Peak, CO

- LEGEND -

- FIELD LOCATED SECTION MONUMENTS AS DESCRIBED
- FIELD SURVEYED WELL LOCATION
- CALCULATED BOTTOM HOLE LOCATION
- CALCULATED SECTION CORNER LOCATION

NOTES

- 1) ELEVATIONS BASED ON N.A.V.D. 1988 PUBLISHED COORDINATES.
- 2) LATITUDES AND LONGITUDES ARE BASE ON NAD 83, PUBLISHED COORDINATES
- 3) STATE PLANE COORDINATES ARE BASED ON COLORADO CENTRAL ZONE, U.S. SURVEY FEET.
- 4) ELEVATION MASK SET TO 15"
- 5) GPS OPERATOR J. KIRKPATRICK, OBSERVED A PDOP 2.58 ON SURVEY POINT NUMBER 388.
- 6) SURFACE AND BOTTOM HOLE LOCATIONS ARE MEASURED 90° FROM SECTION LINES.

SURVEYORS STATEMENT

I, MICHAEL J. LANGHORNE, A REGISTERED LAND SURVEYOR IN THE STATE OF COLORADO DO HEREBY CERTIFY THAT THE SURVEY SHOWN HEREON WAS PREPARED UNDER MY DIRECT SUPERVISION AND HAS BEEN STAKED ON THE GROUND AS SHOWN ON THE PLAT AND CHECKING THAT THIS MAP IS A TRUE REPRESENTATION THEREOF.

Michael J. Langhorne

MICHAEL J. LANGHORNE, COLORADO REGISTRATION NO. 36572
 FOR AND ON BEHALF OF
 BOOKCLIFF SURVEY SERVICES, INC

REVISED: 4/05/19

136 East Third Street
 Rifle, Colorado
 81650 Ph. (970)
 625-2720 Fax (970)
 625-2773



SURVEY DATE:	1/14/14
MAP DATE:	6/9/16
SCALE:	1" = 1200'
PLAT:	1 of 1
PROJECT:	TEP Valley

WELL LOCATION PLAT Prepared for:



TEP Rocky Mountain LLC

NW1/4 NE1/4, SECTION 17
 T. 7 S., R. 93 W. of the 6th. P.M.
 GARFIELD COUNTY, COLORADO