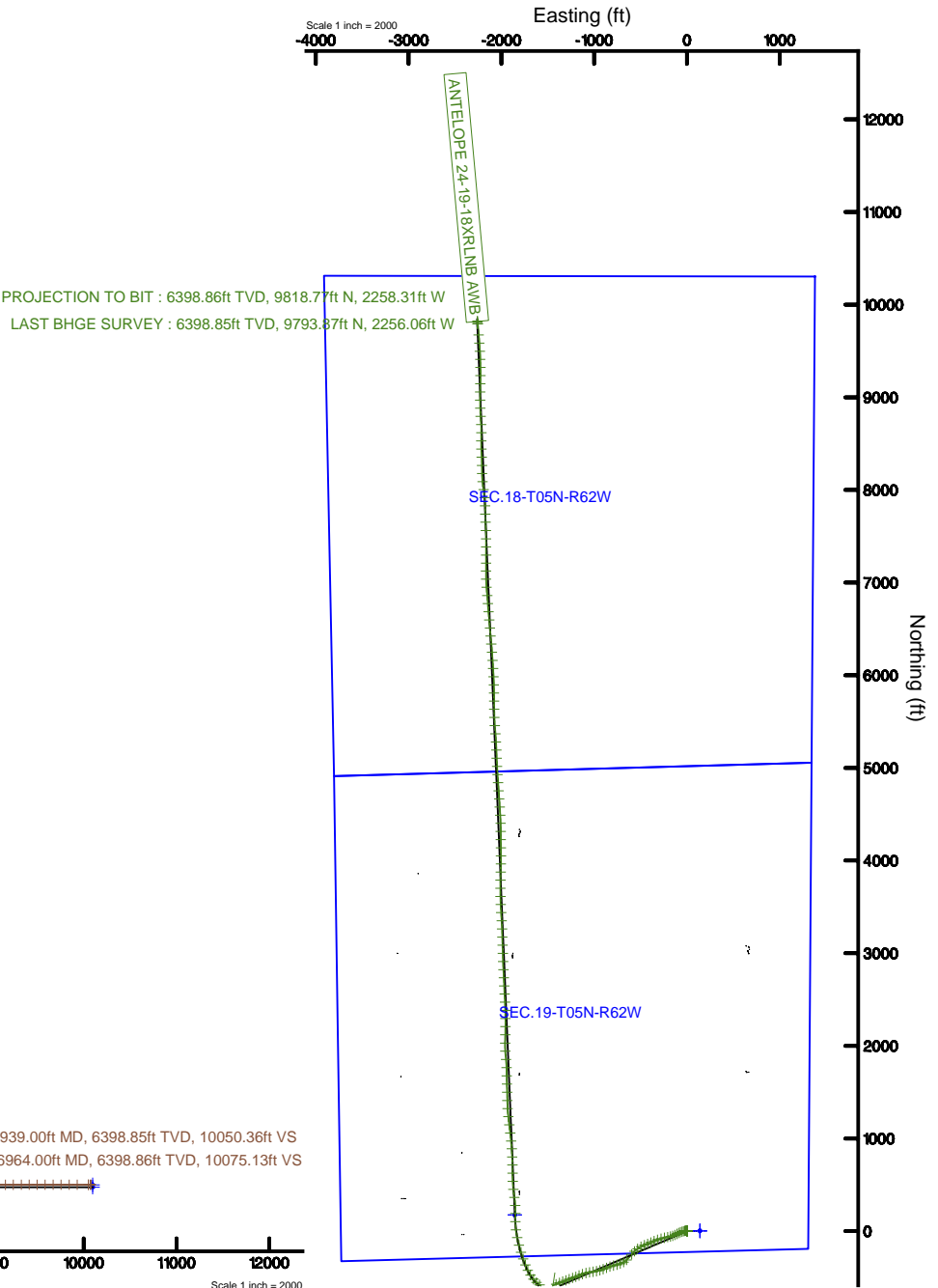
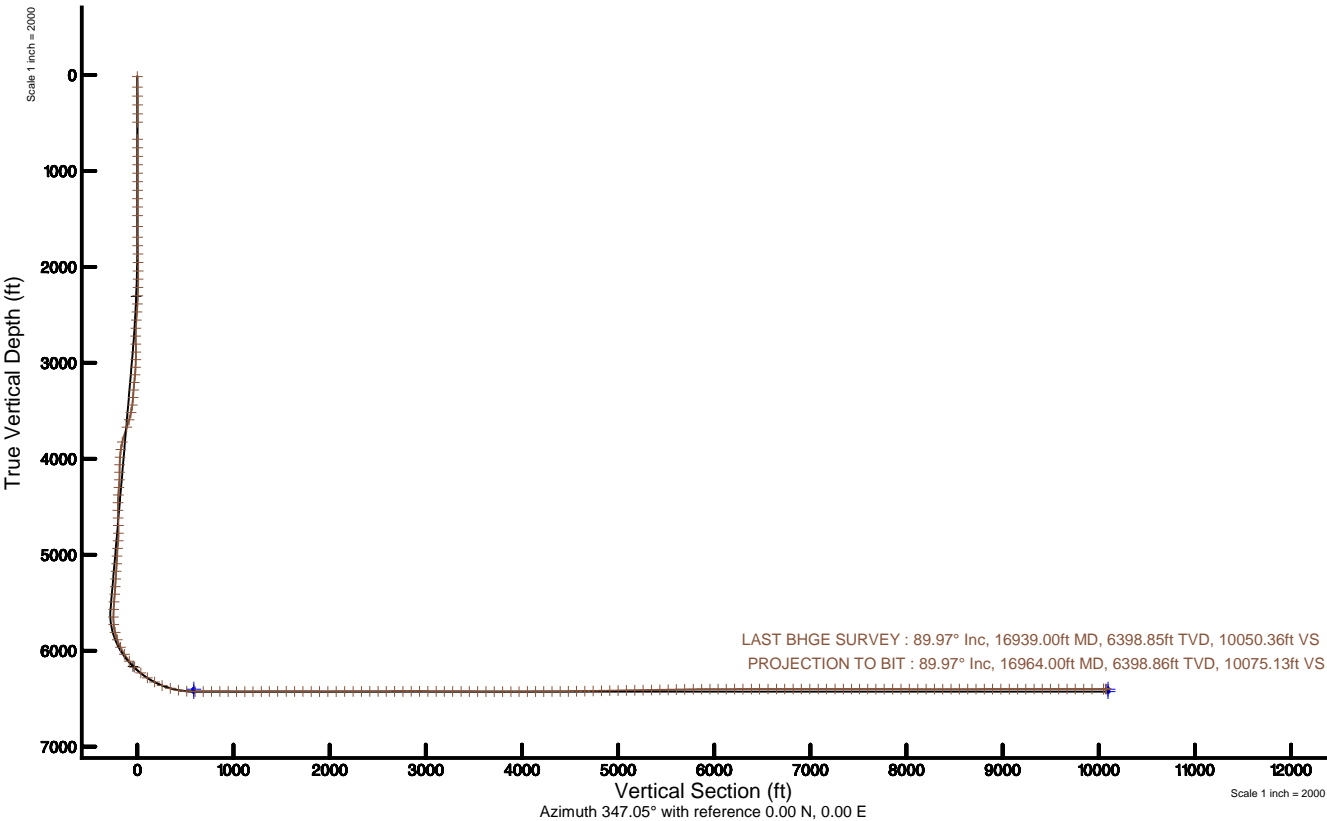


BONANZA CREEK ENERGY

Location: COLORADO Slot: SLOT#08 ANTELOPE 24-19-18XRLNB (226°FSL & 1308°FEL,SEC.19)
Field: WELD COUNTY (NAD83/TRUE) Well: ANTELOPE 24-19-18XRLNB
Facility: SEC.19-T05N-R62W Wellbore: ANTELOPE 24-19-18XRLNB PWB

Plot reference wellpath is ANTELOPE 24-19-18XRLNB (REV-C.0) PWP	Grid System: NAD83 / Lambert Colorado SP, Northern Zone (501), US feet
True vertical depths are referenced to AKITA 519 (4658'GL+17'KB@4675') (RKB)	North Reference: True north
Measured depths are referenced to AKITA 519 (4658'GL+17'KB@4675') (RKB)	Scale: True distance
AKITA 519 (4658'GL+17'KB@4675') (RKB) to Mean Sea Level: 4675 feet	Depths are in feet
Mean Sea Level to Ground level (At Slot: SLOT#08 ANTELOPE 24-19-18XRLNB (226°FSL & 1308°FEL,SEC.19)): 0 feet	Created by: bushjamh on 2019-04-29
Coordinates are in feet referenced to Slot	Database: Denver





Actual Wellpath Report

ANTELOPE 24-19-18XRLNB AWP

Page 1 of 10



REFERENCE WELLPATH IDENTIFICATION			
Operator	BONANZA CREEK ENERGY	Slot	SLOT#08 ANTELOPE 24-19-18XRLNB (226'FSL & 1308'FEL,SEC.19)
Area	COLORADO	Well	ANTELOPE 24-19-18XRLNB
Field	WELD COUNTY (NAD83/TRUE)	Wellbore	ANTELOPE 24-19-18XRLNB AWP
Facility	SEC.19-T05N-R62W		

REPORT SETUP INFORMATION			
Projection System	NAD83 / Lambert Colorado SP, Northern Zone (501), US feet	Software System	WellArchitect® 5.1
North Reference	True	User	Bushjamh
Scale	0.999959	Report Generated	4/29/2019 at 4:07:52 PM
Convergence at slot	0.74° East	Database/Source file	Denver/ANTELOPE_24-19-18XRLNB_AWP.xml

WELLPATH LOCATION						
	Local coordinates		Grid coordinates		Geographic coordinates	
	North[ft]	East[ft]	Easting[US ft]	Northing[US ft]	Latitude	Longitude
Slot Location	-2.89	-139.86	3317203.89	1382709.52	40°22'42.056"N	104°21'41.047"W
Facility Reference Pt			3317343.70	1382714.21	40°22'42.085"N	104°21'39.240"W
Field Reference Pt			3224525.77	1254425.87	40°01'44.400"N	104°41'53.556"W

WELLPATH DATUM			
Calculation method	Minimum curvature	AKITA 519 (4658'GL+17'KB@4675') (RKB) to Facility Vertical Datum	4675.00ft
Horizontal Reference Pt	Slot	AKITA 519 (4658'GL+17'KB@4675') (RKB) to Mean Sea Level	4675.00ft
Vertical Reference Pt	AKITA 519 (4658'GL+17'KB@4675') (RKB)	AKITA 519 (4658'GL+17'KB@4675') (RKB) to Ground Level at Slot (SLOT#08 ANTELOPE 24-19-18XRLNB (226'FSL & 1308'FEL,SEC.19))	4675.00ft
MD Reference Pt	AKITA 519 (4658'GL+17'KB@4675') (RKB)	Section Origin	N 0.00, E 0.00 ft
Field Vertical Reference	Mean Sea Level	Section Azimuth	347.05°



Actual Wellpath Report

ANTELOPE 24-19-18XRLNB AWP

Page 2 of 10



REFERENCE WELLPATH IDENTIFICATION			
Operator	BONANZA CREEK ENERGY	Slot	SLOT#08 ANTELOPE 24-19-18XRLNB (226'FSL & 1308'FEL,SEC.19)
Area	COLORADO	Well	ANTELOPE 24-19-18XRLNB
Field	WELD COUNTY (NAD83/TRUE)	Wellbore	ANTELOPE 24-19-18XRLNB AWB
Facility	SEC.19-T05N-R62W		

WELLPATH DATA (192 stations) † = interpolated/extrapolated station										
MD [ft]	Inclination [°]	Azimuth [°]	TVD [ft]	Vert Sect [ft]	North [ft]	East [ft]	Latitude	Longitude	DLS [°/100ft]	Comments
0.00†	0.000	305.110	0.00	0.00	0.00	0.00	40°22'42.056"N	104°21'41.047"W	0.00	
17.00	0.000	305.110	17.00	0.00	0.00	0.00	40°22'42.056"N	104°21'41.047"W	0.00	
127.00	0.900	305.110	127.00	0.64	0.50	-0.71	40°22'42.061"N	104°21'41.056"W	0.82	
220.00	0.960	322.980	219.98	1.90	1.54	-1.77	40°22'42.072"N	104°21'41.070"W	0.32	
312.00	0.550	249.310	311.98	2.54	2.00	-2.65	40°22'42.076"N	104°21'41.081"W	1.05	
405.00	0.730	243.820	404.97	2.35	1.58	-3.60	40°22'42.072"N	104°21'41.094"W	0.20	
492.00	0.000	7.980	491.97	2.22	1.33	-4.10	40°22'42.070"N	104°21'41.100"W	0.84	
670.00	0.310	80.820	669.97	2.19	1.41	-3.62	40°22'42.070"N	104°21'41.094"W	0.17	
759.00	0.280	58.150	758.97	2.24	1.56	-3.20	40°22'42.072"N	104°21'41.089"W	0.13	
848.00	0.240	65.230	847.97	2.35	1.76	-2.85	40°22'42.074"N	104°21'41.084"W	0.06	
935.00	0.340	70.860	934.96	2.42	1.92	-2.44	40°22'42.075"N	104°21'41.079"W	0.12	
1023.00	0.330	79.730	1022.96	2.43	2.05	-1.94	40°22'42.077"N	104°21'41.072"W	0.06	
1112.00	0.420	74.970	1111.96	2.43	2.18	-1.37	40°22'42.078"N	104°21'41.065"W	0.11	
1201.00	0.370	104.090	1200.96	2.31	2.19	-0.78	40°22'42.078"N	104°21'41.057"W	0.23	
1288.00	0.250	80.960	1287.96	2.17	2.16	-0.32	40°22'42.078"N	104°21'41.051"W	0.20	
1376.00	0.240	67.800	1375.96	2.19	2.26	0.04	40°22'42.079"N	104°21'41.047"W	0.06	
1465.00	0.290	64.760	1464.96	2.27	2.42	0.42	40°22'42.080"N	104°21'41.042"W	0.06	
1579.00	0.260	114.720	1578.96	2.17	2.44	0.91	40°22'42.080"N	104°21'41.035"W	0.21	
1690.00	0.370	310.750	1689.95	2.31	2.57	0.87	40°22'42.082"N	104°21'41.036"W	0.56	
1778.00	2.310	291.360	1777.93	3.53	3.40	-1.00	40°22'42.090"N	104°21'41.060"W	2.23	
1866.00	4.420	276.770	1865.77	5.68	4.44	-6.02	40°22'42.100"N	104°21'41.125"W	2.57	
1954.00	6.170	265.040	1953.39	7.48	4.43	-14.10	40°22'42.100"N	104°21'41.229"W	2.33	
2043.00	8.020	256.880	2041.71	8.12	2.61	-24.91	40°22'42.082"N	104°21'41.369"W	2.36	
2130.00	9.920	254.120	2127.64	7.72	-0.82	-38.03	40°22'42.048"N	104°21'41.539"W	2.24	
2218.00	11.600	250.050	2214.10	6.26	-5.91	-53.64	40°22'41.998"N	104°21'41.740"W	2.09	
2306.00	12.380	248.690	2300.17	3.81	-12.36	-70.74	40°22'41.934"N	104°21'41.961"W	0.94	
2394.00	13.860	244.870	2385.88	0.21	-20.26	-89.07	40°22'41.856"N	104°21'42.198"W	1.95	
2480.00	15.400	241.960	2469.09	-4.94	-30.01	-108.48	40°22'41.760"N	104°21'42.449"W	1.98	
2568.00	16.290	242.840	2553.74	-11.01	-41.13	-129.77	40°22'41.650"N	104°21'42.724"W	1.05	
2657.00	16.940	249.320	2639.03	-15.82	-51.41	-153.01	40°22'41.548"N	104°21'43.024"W	2.20	



Actual Wellpath Report

ANTELOPE 24-19-18XRLNB AWP

Page 3 of 10



REFERENCE WELLPATH IDENTIFICATION			
Operator	BONANZA CREEK ENERGY	Slot	SLOT#08 ANTELOPE 24-19-18XRLNB (226'FSL & 1308'FEL,SEC.19)
Area	COLORADO	Well	ANTELOPE 24-19-18XRLNB
Field	WELD COUNTY (NAD83/TRUE)	Wellbore	ANTELOPE 24-19-18XRLNB AWB
Facility	SEC.19-T05N-R62W		

WELLPATH DATA (192 stations)										
MD [ft]	Inclination [°]	Azimuth [°]	TVD [ft]	Vert Sect [ft]	North [ft]	East [ft]	Latitude	Longitude	DLS [°/100ft]	Comments
2743.00	18.690	257.010	2720.92	-17.52	-58.93	-178.17	40°22'41.474"N	104°21'43.349"W	3.41	
2832.00	21.580	260.510	2804.47	-16.54	-64.84	-208.21	40°22'41.416"N	104°21'43.738"W	3.52	
2922.00	24.840	257.210	2887.18	-15.49	-71.76	-242.98	40°22'41.347"N	104°21'44.187"W	3.90	
3010.00	26.300	253.780	2966.57	-16.55	-81.29	-279.73	40°22'41.253"N	104°21'44.662"W	2.36	
3099.00	26.700	252.210	3046.22	-19.37	-92.91	-317.70	40°22'41.138"N	104°21'45.152"W	0.91	
3187.00	26.710	246.160	3124.84	-24.77	-106.95	-354.62	40°22'41.000"N	104°21'45.629"W	3.09	
3275.00	25.760	244.140	3203.78	-32.79	-123.28	-389.92	40°22'40.838"N	104°21'46.085"W	1.48	
3362.00	24.560	248.180	3282.53	-39.80	-138.25	-423.72	40°22'40.690"N	104°21'46.522"W	2.41	
3449.00	26.800	249.870	3360.93	-45.04	-151.72	-458.93	40°22'40.557"N	104°21'46.977"W	2.71	
3537.00	27.700	242.140	3439.19	-52.79	-168.11	-495.65	40°22'40.395"N	104°21'47.452"W	4.15	
3626.00	29.760	234.810	3517.25	-66.48	-190.52	-532.00	40°22'40.174"N	104°21'47.921"W	4.58	
3714.00	30.250	228.400	3593.48	-85.38	-217.83	-566.44	40°22'39.904"N	104°21'48.366"W	3.68	
3802.00	29.530	217.940	3669.83	-109.71	-249.67	-596.37	40°22'39.589"N	104°21'48.753"W	5.97	
3977.00	26.540	226.340	3824.34	-156.91	-310.71	-651.20	40°22'38.986"N	104°21'49.461"W	2.83	
4065.00	26.530	241.120	3903.15	-172.36	-333.80	-682.67	40°22'38.758"N	104°21'49.868"W	7.49	
4154.00	26.010	248.550	3982.98	-180.71	-350.54	-718.25	40°22'38.592"N	104°21'50.328"W	3.74	
4241.00	25.740	253.860	4061.27	-184.58	-362.77	-754.15	40°22'38.471"N	104°21'50.792"W	2.68	
4329.00	26.600	257.040	4140.25	-185.65	-372.50	-791.71	40°22'38.375"N	104°21'51.277"W	1.87	
4417.00	26.820	251.950	4218.87	-187.42	-383.08	-829.79	40°22'38.271"N	104°21'51.769"W	2.61	
4505.00	26.560	247.970	4297.50	-192.29	-396.61	-866.91	40°22'38.137"N	104°21'52.249"W	2.05	
4593.00	25.820	249.330	4376.47	-197.97	-410.75	-903.08	40°22'37.997"N	104°21'52.716"W	1.08	
4681.00	25.080	253.670	4455.94	-201.65	-422.76	-938.91	40°22'37.879"N	104°21'53.179"W	2.28	
4769.00	24.520	257.590	4535.83	-202.58	-431.93	-974.64	40°22'37.788"N	104°21'53.641"W	1.97	
4858.00	25.600	262.230	4616.45	-200.67	-438.50	-1011.74	40°22'37.723"N	104°21'54.120"W	2.52	
4946.00	26.600	260.270	4695.48	-197.85	-444.40	-1049.99	40°22'37.665"N	104°21'54.614"W	1.50	
5034.00	26.600	257.020	4774.17	-196.76	-452.16	-1088.61	40°22'37.588"N	104°21'55.113"W	1.65	
5123.00	26.660	247.940	4853.76	-199.93	-464.13	-1126.55	40°22'37.470"N	104°21'55.603"W	4.57	
5212.00	26.170	247.320	4933.47	-206.41	-479.20	-1163.16	40°22'37.321"N	104°21'56.076"W	0.63	
5300.00	24.080	250.430	5013.14	-211.76	-492.70	-1197.99	40°22'37.187"N	104°21'56.526"W	2.81	
5388.00	25.870	251.520	5092.91	-215.69	-504.80	-1233.12	40°22'37.068"N	104°21'56.980"W	2.10	



Actual Wellpath Report

ANTELOPE 24-19-18XRLNB AWP

Page 4 of 10



REFERENCE WELLPATH IDENTIFICATION			
Operator	BONANZA CREEK ENERGY	Slot	SLOT#08 ANTELOPE 24-19-18XRLNB (226'FSL & 1308'FEL,SEC.19)
Area	COLORADO	Well	ANTELOPE 24-19-18XRLNB
Field	WELD COUNTY (NAD83/TRUE)	Wellbore	ANTELOPE 24-19-18XRLNB AWB
Facility	SEC.19-T05N-R62W		

WELLPATH DATA (192 stations)										
MD [ft]	Inclination [°]	Azimuth [°]	TVD [ft]	Vert Sect [ft]	North [ft]	East [ft]	Latitude	Longitude	DLS [°/100ft]	Comments
5476.00	25.930	248.540	5172.08	-220.39	-517.92	-1269.23	40°22'36.938"N	104°21'57.447"W	1.48	
5564.00	24.810	248.810	5251.59	-225.88	-531.64	-1304.35	40°22'36.803"N	104°21'57.901"W	1.28	
5652.00	25.750	251.760	5331.16	-230.29	-544.29	-1339.73	40°22'36.677"N	104°21'58.358"W	1.79	
5739.00	25.910	246.110	5409.48	-235.64	-557.91	-1375.06	40°22'36.543"N	104°21'58.814"W	2.83	
5828.00	25.340	247.840	5489.73	-242.39	-572.97	-1410.48	40°22'36.394"N	104°21'59.272"W	1.06	
5915.00	25.080	252.090	5568.45	-246.96	-585.66	-1445.27	40°22'36.269"N	104°21'59.721"W	2.10	
6003.00	26.060	254.010	5647.83	-249.60	-596.72	-1481.60	40°22'36.159"N	104°22'00.191"W	1.46	
6091.00	25.260	271.130	5727.26	-246.06	-601.69	-1519.00	40°22'36.110"N	104°22'00.674"W	8.45	
6180.00	24.520	289.090	5808.11	-231.62	-595.26	-1555.50	40°22'36.174"N	104°22'01.146"W	8.50	
6266.00	26.450	302.330	5885.80	-208.52	-579.17	-1588.57	40°22'36.333"N	104°22'01.573"W	6.98	
6355.00	30.650	312.580	5964.01	-175.70	-553.19	-1622.06	40°22'36.589"N	104°22'02.006"W	7.24	
6443.00	35.110	319.860	6037.93	-134.67	-518.64	-1654.92	40°22'36.931"N	104°22'02.430"W	6.76	
6532.00	40.390	327.270	6108.31	-84.70	-474.76	-1687.05	40°22'37.364"N	104°22'02.846"W	7.81	
6619.00	44.940	334.270	6172.30	-28.15	-423.31	-1715.66	40°22'37.873"N	104°22'03.215"W	7.55	
6706.00	50.830	338.280	6230.63	35.21	-364.23	-1741.51	40°22'38.457"N	104°22'03.549"W	7.58	
6792.00	56.640	340.620	6281.49	103.91	-299.32	-1765.79	40°22'39.098"N	104°22'03.863"W	7.10	
6879.00	61.990	343.470	6325.87	178.41	-228.17	-1788.79	40°22'39.801"N	104°22'04.160"W	6.76	
6967.00	68.040	345.200	6363.03	258.05	-151.40	-1810.29	40°22'40.560"N	104°22'04.438"W	7.10	
7056.00	74.740	347.690	6391.42	342.33	-69.45	-1830.01	40°22'41.369"N	104°22'04.693"W	7.98	
7143.00	79.770	352.970	6410.62	426.99	14.15	-1844.22	40°22'42.196"N	104°22'04.877"W	8.27	
7232.00	85.750	359.680	6421.84	514.03	102.17	-1849.84	40°22'43.065"N	104°22'04.949"W	10.05	
7320.00	90.250	0.590	6424.91	599.67	190.09	-1849.63	40°22'43.934"N	104°22'04.947"W	5.22	
7407.00	90.400	356.570	6424.42	684.90	277.05	-1851.78	40°22'44.793"N	104°22'04.975"W	4.62	
7494.00	90.370	352.300	6423.84	771.15	363.61	-1860.22	40°22'45.649"N	104°22'05.084"W	4.91	
7581.00	89.690	353.460	6423.79	857.70	449.94	-1871.00	40°22'46.502"N	104°22'05.223"W	1.55	
7669.00	89.170	357.650	6424.67	944.71	537.65	-1877.82	40°22'47.369"N	104°22'05.311"W	4.80	
7757.00	89.970	359.440	6425.33	1030.94	625.62	-1880.05	40°22'48.238"N	104°22'05.340"W	2.23	
7845.00	89.910	358.940	6425.42	1116.97	713.61	-1881.30	40°22'49.107"N	104°22'05.357"W	0.57	
7932.00	90.120	358.020	6425.40	1202.25	800.58	-1883.61	40°22'49.967"N	104°22'05.386"W	1.08	
8020.00	90.680	355.900	6424.78	1288.93	888.45	-1888.27	40°22'50.835"N	104°22'05.447"W	2.49	



Actual Wellpath Report

ANTELOPE 24-19-18XRLNB AWP

Page 5 of 10



REFERENCE WELLPATH IDENTIFICATION			
Operator	BONANZA CREEK ENERGY	Slot	SLOT#08 ANTELOPE 24-19-18XRLNB (226'FSL & 1308'FEL,SEC.19)
Area	COLORADO	Well	ANTELOPE 24-19-18XRLNB
Field	WELD COUNTY (NAD83/TRUE)	Wellbore	ANTELOPE 24-19-18XRLNB AWB
Facility	SEC.19-T05N-R62W		

WELLPATH DATA (192 stations)										
MD [ft]	Inclination [°]	Azimuth [°]	TVD [ft]	Vert Sect [ft]	North [ft]	East [ft]	Latitude	Longitude	DLS [°/100ft]	Comments
8105.00	90.520	353.970	6423.89	1373.11	973.10	-1895.78	40°22'51.672"N	104°22'05.544"W	2.28	
8192.00	89.940	353.810	6423.54	1459.50	1059.61	-1905.04	40°22'52.526"N	104°22'05.664"W	0.69	
8281.00	90.090	353.250	6423.52	1547.93	1148.04	-1915.06	40°22'53.400"N	104°22'05.793"W	0.65	
8369.00	89.690	353.490	6423.69	1635.39	1235.45	-1925.22	40°22'54.264"N	104°22'05.925"W	0.53	
8457.00	89.780	356.900	6424.09	1722.49	1323.13	-1932.59	40°22'55.130"N	104°22'06.020"W	3.88	
8544.00	89.820	358.780	6424.40	1807.95	1410.06	-1935.87	40°22'55.989"N	104°22'06.062"W	2.16	
8633.00	89.660	358.680	6424.80	1895.11	1499.04	-1937.85	40°22'56.869"N	104°22'06.088"W	0.21	
8721.00	90.180	357.970	6424.92	1981.41	1587.00	-1940.42	40°22'57.738"N	104°22'06.121"W	1.00	
8810.00	90.150	358.970	6424.67	2068.65	1675.97	-1942.79	40°22'58.617"N	104°22'06.152"W	1.12	
8899.00	90.430	358.980	6424.22	2155.72	1764.95	-1944.39	40°22'59.496"N	104°22'06.173"W	0.31	
8988.00	90.060	353.660	6423.84	2243.53	1853.74	-1950.10	40°23'00.374"N	104°22'06.247"W	5.99	
9077.00	90.180	356.240	6423.65	2331.68	1942.38	-1957.93	40°23'01.250"N	104°22'06.348"W	2.90	
9165.00	90.060	1.210	6423.47	2417.83	2030.33	-1959.89	40°23'02.119"N	104°22'06.373"W	5.65	
9254.00	90.030	1.680	6423.40	2504.04	2119.31	-1957.64	40°23'02.998"N	104°22'06.345"W	0.53	
9342.00	90.150	0.480	6423.26	2589.41	2207.29	-1955.98	40°23'03.867"N	104°22'06.323"W	1.37	
9430.00	90.220	359.350	6422.97	2675.20	2295.29	-1956.12	40°23'04.737"N	104°22'06.325"W	1.29	
9518.00	90.180	358.400	6422.67	2761.34	2383.27	-1957.84	40°23'05.606"N	104°22'06.347"W	1.08	
9606.00	89.880	357.540	6422.62	2847.74	2471.21	-1960.96	40°23'06.475"N	104°22'06.388"W	1.04	
9694.00	89.780	356.870	6422.88	2934.36	2559.11	-1965.25	40°23'07.344"N	104°22'06.443"W	0.77	
9782.00	89.880	357.540	6423.14	3020.98	2647.00	-1969.54	40°23'08.212"N	104°22'06.499"W	0.77	
9870.00	89.850	357.350	6423.35	3107.54	2734.91	-1973.47	40°23'09.081"N	104°22'06.550"W	0.22	
9957.00	89.750	356.930	6423.65	3193.19	2821.80	-1977.81	40°23'09.940"N	104°22'06.606"W	0.50	
10045.00	89.880	358.270	6423.94	3279.71	2909.72	-1981.49	40°23'10.809"N	104°22'06.654"W	1.53	
10134.00	89.660	358.020	6424.30	3367.04	2998.68	-1984.37	40°23'11.688"N	104°22'06.691"W	0.37	
10222.00	89.910	358.190	6424.63	3453.41	3086.63	-1987.28	40°23'12.557"N	104°22'06.729"W	0.34	
10309.00	89.780	358.130	6424.86	3538.78	3173.58	-1990.08	40°23'13.416"N	104°22'06.765"W	0.16	
10397.00	89.720	358.370	6425.24	3625.10	3261.54	-1992.76	40°23'14.285"N	104°22'06.800"W	0.28	
10486.00	89.820	356.410	6425.60	3712.65	3350.44	-1996.82	40°23'15.164"N	104°22'06.852"W	2.21	
10574.00	90.030	356.100	6425.72	3799.52	3438.26	-2002.56	40°23'16.031"N	104°22'06.926"W	0.43	
10661.00	90.090	357.890	6425.63	3885.21	3525.13	-2007.12	40°23'16.890"N	104°22'06.985"W	2.06	



Actual Wellpath Report

ANTELOPE 24-19-18XRLNB AWP

Page 6 of 10



REFERENCE WELLPATH IDENTIFICATION

Operator	BONANZA CREEK ENERGY	Slot	SLOT#08 ANTELOPE 24-19-18XRLNB (226'FSL & 1308'FEL,SEC.19)
Area	COLORADO	Well	ANTELOPE 24-19-18XRLNB
Field	WELD COUNTY (NAD83/TRUE)	Wellbore	ANTELOPE 24-19-18XRLNB AWB
Facility	SEC.19-T05N-R62W		

WELLPATH DATA (192 stations)

MD [ft]	Inclination [°]	Azimuth [°]	TVD [ft]	Vert Sect [ft]	North [ft]	East [ft]	Latitude	Longitude	DLS [°/100ft]	Comments
10748.00	90.310	359.040	6425.32	3970.49	3612.10	-2009.45	40°23'17.749"N	104°22'07.016"W	1.35	
10836.00	90.180	359.850	6424.95	4056.44	3700.09	-2010.31	40°23'18.619"N	104°22'07.027"W	0.93	
10924.00	90.150	1.460	6424.69	4141.97	3788.08	-2009.30	40°23'19.488"N	104°22'07.014"W	1.83	
11011.00	90.250	1.500	6424.39	4226.22	3875.05	-2007.05	40°23'20.348"N	104°22'06.985"W	0.12	
11100.00	90.120	1.050	6424.10	4312.49	3964.03	-2005.07	40°23'21.227"N	104°22'06.959"W	0.53	
11187.00	90.150	359.640	6423.90	4397.16	4051.03	-2004.55	40°23'22.086"N	104°22'06.953"W	1.62	
11274.00	90.800	359.340	6423.18	4482.12	4138.02	-2005.32	40°23'22.946"N	104°22'06.963"W	0.82	
11362.00	90.980	358.720	6421.81	4568.19	4226.00	-2006.81	40°23'23.815"N	104°22'06.982"W	0.73	
11450.00	90.890	0.160	6420.37	4654.13	4313.98	-2007.67	40°23'24.685"N	104°22'06.993"W	1.64	
11538.00	91.050	358.300	6418.88	4740.13	4401.95	-2008.86	40°23'25.554"N	104°22'07.009"W	2.12	
11626.00	90.920	356.640	6417.37	4826.66	4489.85	-2012.74	40°23'26.423"N	104°22'07.059"W	1.89	
11714.00	90.890	356.480	6415.98	4913.45	4577.68	-2018.02	40°23'27.291"N	104°22'07.127"W	0.18	
11802.00	91.010	356.020	6414.52	5000.30	4665.48	-2023.77	40°23'28.158"N	104°22'07.202"W	0.54	
11890.00	90.890	355.870	6413.06	5087.23	4753.25	-2030.00	40°23'29.026"N	104°22'07.282"W	0.22	
11977.00	90.890	356.340	6411.71	5173.14	4840.04	-2035.90	40°23'29.883"N	104°22'07.359"W	0.54	
12065.00	90.950	356.080	6410.30	5260.01	4927.83	-2041.72	40°23'30.751"N	104°22'07.434"W	0.30	
12154.00	90.890	356.970	6408.87	5347.78	5016.66	-2047.11	40°23'31.628"N	104°22'07.504"W	1.00	
12242.00	90.950	357.760	6407.46	5434.35	5104.55	-2051.16	40°23'32.497"N	104°22'07.556"W	0.90	
12330.00	90.950	357.980	6406.00	5520.77	5192.48	-2054.43	40°23'33.366"N	104°22'07.599"W	0.25	
12417.00	90.950	356.740	6404.55	5606.35	5279.37	-2058.44	40°23'34.225"N	104°22'07.650"W	1.43	
12505.00	90.800	355.730	6403.21	5693.21	5367.17	-2064.21	40°23'35.092"N	104°22'07.725"W	1.16	
12595.00	90.950	355.420	6401.84	5782.21	5456.89	-2071.16	40°23'35.979"N	104°22'07.815"W	0.38	
12683.00	90.860	357.930	6400.45	5868.95	5544.73	-2076.26	40°23'36.847"N	104°22'07.881"W	2.85	
12771.00	89.940	359.890	6399.83	5955.07	5632.70	-2077.93	40°23'37.716"N	104°22'07.903"W	2.46	
12859.00	90.030	359.420	6399.85	6040.95	5720.70	-2078.46	40°23'38.586"N	104°22'07.910"W	0.54	
12946.00	89.970	358.730	6399.85	6126.04	5807.69	-2079.87	40°23'39.445"N	104°22'07.928"W	0.80	
13034.00	90.090	358.510	6399.81	6212.25	5895.67	-2081.99	40°23'40.314"N	104°22'07.955"W	0.28	
13122.00	90.060	357.280	6399.69	6298.68	5983.60	-2085.22	40°23'41.183"N	104°22'07.997"W	1.40	
13211.00	90.090	357.040	6399.58	6386.30	6072.49	-2089.63	40°23'42.062"N	104°22'08.054"W	0.27	
13298.00	90.090	355.920	6399.44	6472.12	6159.33	-2094.97	40°23'42.920"N	104°22'08.124"W	1.29	



Actual Wellpath Report

ANTELOPE 24-19-18XRLNB AWP

Page 7 of 10



REFERENCE WELLPATH IDENTIFICATION			
Operator	BONANZA CREEK ENERGY	Slot	SLOT#08 ANTELOPE 24-19-18XRLNB (226'FSL & 1308'FEL,SEC.19)
Area	COLORADO	Well	ANTELOPE 24-19-18XRLNB
Field	WELD COUNTY (NAD83/TRUE)	Wellbore	ANTELOPE 24-19-18XRLNB AWB
Facility	SEC.19-T05N-R62W		

WELLPATH DATA (192 stations)										
MD [ft]	Inclination [°]	Azimuth [°]	TVD [ft]	Vert Sect [ft]	North [ft]	East [ft]	Latitude	Longitude	DLS [°/100ft]	Comments
13387.00	90.150	355.290	6399.25	6560.13	6248.07	-2101.79	40°23'43.797"N	104°22'08.212"W	0.71	
13475.00	89.970	355.100	6399.16	6647.25	6335.76	-2109.16	40°23'44.663"N	104°22'08.307"W	0.30	
13562.00	90.120	355.270	6399.09	6733.37	6422.45	-2116.47	40°23'45.520"N	104°22'08.402"W	0.26	
13650.00	89.970	355.150	6399.02	6820.48	6510.14	-2123.81	40°23'46.386"N	104°22'08.497"W	0.22	
13737.00	90.090	355.430	6398.98	6906.58	6596.85	-2130.96	40°23'47.243"N	104°22'08.589"W	0.35	
13826.00	90.030	354.940	6398.88	6994.69	6685.53	-2138.43	40°23'48.120"N	104°22'08.686"W	0.55	
13914.00	90.030	355.680	6398.84	7081.77	6773.24	-2145.62	40°23'48.986"N	104°22'08.779"W	0.84	
14001.00	89.940	355.160	6398.86	7167.85	6859.96	-2152.57	40°23'49.843"N	104°22'08.869"W	0.61	
14091.00	89.970	355.400	6398.93	7256.92	6949.66	-2159.98	40°23'50.730"N	104°22'08.965"W	0.27	
14179.00	89.970	358.380	6398.98	7343.62	7037.52	-2164.75	40°23'51.598"N	104°22'09.026"W	3.39	
14266.00	90.030	0.450	6398.98	7428.60	7124.51	-2165.64	40°23'52.457"N	104°22'09.038"W	2.38	
14352.00	89.850	0.490	6399.07	7512.25	7210.50	-2164.93	40°23'53.307"N	104°22'09.029"W	0.21	
14438.00	89.880	359.830	6399.27	7596.01	7296.50	-2164.69	40°23'54.157"N	104°22'09.026"W	0.77	
14526.00	90.000	359.920	6399.36	7681.81	7384.50	-2164.88	40°23'55.027"N	104°22'09.029"W	0.17	
14614.00	89.940	359.660	6399.41	7767.65	7472.50	-2165.21	40°23'55.896"N	104°22'09.033"W	0.30	
14704.00	89.880	357.420	6399.55	7855.84	7562.47	-2167.50	40°23'56.785"N	104°22'09.063"W	2.49	
14793.00	89.910	357.680	6399.71	7943.35	7651.39	-2171.30	40°23'57.664"N	104°22'09.112"W	0.29	
14881.00	89.970	359.010	6399.81	8029.64	7739.35	-2173.85	40°23'58.533"N	104°22'09.145"W	1.51	
14970.00	89.880	358.810	6399.92	8116.75	7828.33	-2175.54	40°23'59.412"N	104°22'09.167"W	0.25	
15059.00	89.880	354.590	6400.11	8204.47	7917.16	-2180.66	40°24'00.290"N	104°22'09.233"W	4.74	
15146.00	89.940	351.180	6400.25	8291.00	8003.48	-2191.44	40°24'01.143"N	104°22'09.372"W	3.92	
15233.00	90.030	353.550	6400.27	8377.62	8089.70	-2202.99	40°24'01.995"N	104°22'09.522"W	2.73	
15321.00	90.030	359.230	6400.22	8464.42	8177.49	-2208.53	40°24'02.863"N	104°22'09.594"W	6.45	
15408.00	90.030	359.650	6400.18	8549.40	8264.49	-2209.38	40°24'03.722"N	104°22'09.605"W	0.48	
15497.00	90.120	356.810	6400.06	8636.70	8353.44	-2212.13	40°24'04.601"N	104°22'09.640"W	3.19	
15585.00	90.120	358.120	6399.88	8723.25	8441.35	-2216.02	40°24'05.470"N	104°22'09.691"W	1.49	
15673.00	90.000	0.560	6399.78	8809.23	8529.34	-2217.04	40°24'06.339"N	104°22'09.704"W	2.78	
15761.00	90.090	0.800	6399.71	8894.75	8617.33	-2215.99	40°24'07.209"N	104°22'09.691"W	0.29	
15849.00	90.120	356.400	6399.55	8980.95	8705.28	-2218.14	40°24'08.078"N	104°22'09.718"W	5.00	
15938.00	89.970	356.450	6399.48	9068.76	8794.11	-2223.69	40°24'08.956"N	104°22'09.790"W	0.18	



Actual Wellpath Report

ANTELOPE 24-19-18XRLNB AWP

Page 8 of 10



REFERENCE WELLPATH IDENTIFICATION			
Operator	BONANZA CREEK ENERGY	Slot	SLOT#08 ANTELOPE 24-19-18XRLNB (226'FSL & 1308'FEL,SEC.19)
Area	COLORADO	Well	ANTELOPE 24-19-18XRLNB
Field	WELD COUNTY (NAD83/TRUE)	Wellbore	ANTELOPE 24-19-18XRLNB AWB
Facility	SEC.19-T05N-R62W		

WELLPATH DATA (192 stations)										
MD [ft]	Inclination [°]	Azimuth [°]	TVD [ft]	Vert Sect [ft]	North [ft]	East [ft]	Latitude	Longitude	DLS [°/100ft]	Comments
16026.00	90.030	358.350	6399.48	9155.32	8882.01	-2227.68	40°24'09.824"N	104°22'09.842"W	2.16	
16114.00	90.150	359.570	6399.35	9241.43	8970.00	-2229.28	40°24'10.694"N	104°22'09.863"W	1.39	
16202.00	89.970	0.830	6399.25	9327.12	9057.99	-2228.97	40°24'11.563"N	104°22'09.859"W	1.45	
16290.00	90.060	1.350	6399.23	9412.49	9145.98	-2227.30	40°24'12.433"N	104°22'09.837"W	0.60	
16378.00	89.970	0.660	6399.21	9497.90	9233.96	-2225.76	40°24'13.302"N	104°22'09.817"W	0.79	
16466.00	90.030	358.900	6399.21	9583.73	9321.96	-2226.09	40°24'14.172"N	104°22'09.822"W	2.00	
16554.00	90.030	358.260	6399.16	9669.95	9409.93	-2228.27	40°24'15.041"N	104°22'09.850"W	0.73	
16641.00	90.120	356.700	6399.05	9755.52	9496.85	-2232.10	40°24'15.900"N	104°22'09.900"W	1.80	
16729.00	90.090	355.330	6398.89	9842.44	9584.63	-2238.21	40°24'16.767"N	104°22'09.979"W	1.56	
16817.00	90.000	355.210	6398.82	9929.54	9672.33	-2245.47	40°24'17.634"N	104°22'10.073"W	0.17	
16939.00	89.970	354.830	6398.85	10050.36	9793.87	-2256.06	40°24'18.835"N	104°22'10.210"W	0.31	LAST BHGE SURVEY
16964.00	89.970	354.830	6398.86	10075.13	9818.77	-2258.31	40°24'19.081"N	104°22'10.239"W	0.00	PROJECTION TO BIT



Actual Wellpath Report

ANTELOPE 24-19-18XRLNB AWP

Page 9 of 10



REFERENCE WELLPATH IDENTIFICATION			
Operator	BONANZA CREEK ENERGY	Slot	SLOT#08 ANTELOPE 24-19-18XRLNB (226'FSL & 1308'FEL, SEC.19)
Area	COLORADO	Well	ANTELOPE 24-19-18XRLNB
Field	WELD COUNTY (NAD83/TRUE)	Wellbore	ANTELOPE 24-19-18XRLNB AWB
Facility	SEC.19-T05N-R62W		

TARGETS								
Name	TVD [ft]	North [ft]	East [ft]	Grid East [US ft]	Grid North [US ft]	Latitude	Longitude	Shape
ANTELOPE 24-19-18XRLNB BHL REV-1 (470'FNL & 1650'FWL, SEC.18)	6400.00	9839.88	-2262.29	3314815.55	1392519.12	40°24'19.290"N	104°22'10.290"W	point
ANTELOPE 24-19-18XRLNB LP REV-1 (470'FSL & 1870'FWL, SEC.19)	6400.00	174.88	-1855.64	3315346.24	1382860.55	40°22'43.784"N	104°22'05.025"W	point
ANTELOPE 24-19-18XRLNB BHL REV-2 (470'FNL & 1650'FWL, SEC.18)	6425.00	9839.88	-2262.29	3314815.55	1392519.12	40°24'19.290"N	104°22'10.290"W	point
ANTELOPE 24-19-18XRLNB LP REV-2 (470'FSL & 1870'FWL, SEC.19)	6425.00	174.88	-1855.64	3315346.24	1382860.55	40°22'43.784"N	104°22'05.025"W	point
SEC.18/19-T05N-R62W (460'SETBACK)	11999.00	2.89	139.86	3317343.70	1382714.21	40°22'42.085"N	104°21'39.240"W	polygon
SEC.18-T05N-R62W	12000.00	2.89	139.86	3317343.70	1382714.21	40°22'42.085"N	104°21'39.240"W	polygon
SEC.19-T05N-R62W	12000.00	2.89	139.86	3317343.70	1382714.21	40°22'42.085"N	104°21'39.240"W	polygon

WELLPATH COMPOSITION - Ref Wellbore: ANTELOPE 24-19-18XRLNB AWB Ref Wellpath: ANTELOPE 24-19-18XRLNB AWP				
Start MD [ft]	End MD [ft]	Positional Uncertainty Model	Log Name/Comment	Wellbore
17.00	1579.00	BHI NaviTrak (Rotating+Axial Corr)	BHI NAVITRAK (ROTATING+AXIAL CORR) <127-1579>	ANTELOPE 24-19-18XRLNB AWB
1579.00	16939.00	BHI AutoTrak Curve (Axial Corr, Short spacing)	BHI AUTOTRAK CURVE (AXIAL CORR, SHORT SPACING) <1690-16939>	ANTELOPE 24-19-18XRLNB AWB
16939.00	16964.00	Blind Drilling (std)	Projection to bit	ANTELOPE 24-19-18XRLNB AWB



Actual Wellpath Report
ANTELOPE 24-19-18XRLNB AWP
Page 10 of 10



REFERENCE WELLPATH IDENTIFICATION			
Operator	BONANZA CREEK ENERGY	Slot	SLOT#08 ANTELOPE 24-19-18XRLNB (226'FSL & 1308'FEL,SEC.19)
Area	COLORADO	Well	ANTELOPE 24-19-18XRLNB
Field	WELD COUNTY (NAD83/TRUE)	Wellbore	ANTELOPE 24-19-18XRLNB AWB
Facility	SEC.19-T05N-R62W		

WELLPATH COMMENTS				
MD [ft]	Inclination [°]	Azimuth [°]	TVD [ft]	Comment
16939.00	89.970	354.830	6398.85	LAST BHGE SURVEY
16964.00	89.970	354.830	6398.86	PROJECTION TO BIT