



CEMENT BOND LOG  
GAMMA RAY CCL VDL

Company	EXTRACTION OIL & GAS		
Well	GRAEBER 31-33D		
Field	WATTENBERG		
County	WELD	State	COLORADO
Location:	API # : 05-123-23664		Other Services
	SESE		NONE
Permanent Datum	SEC 33	TWP 1N	RGE 68W
Log Measured From	KB	Elevation	5,234'
Drilling Measured From	KB	K.B. 5,250'	D.F. 5,249'
		G.L. 5,234'	

Date	13 JUNE 2019
Run Number	ONE
Depth Driller	8,943'
Depth Logger	3,095'
Bottom Logged Interval	3,095'
Top Log Interval	SURFACE
Open Hole Size	7-7/8"
Type Fluid	WATER
Density / Viscosity	8.34 PPG
Max. Recorded Temp.	N/A
Estimated Cement Top	2,720'
Time Well Ready	ROA
Time Logger on Bottom	07:30
Equipment Number	25
Location	PLATTEVILLE, CO
Recorded By	B. TURNBULL
Witnessed By	C. EAST
Borehole Record	
Run Number	Bit
	From
	To
	Size
	Weight
	From
	To
Tubing Record	
Casing Record	Size
Surface String	8-5/8"
Prot. String	24#
Production String	4-1/2"
Liner	11.6#

<<< Fold Here >>>

All interpretations are opinions based on inferences from electrical or other measurements and we cannot and do not guarantee the accuracy or correctness of any interpretation, and we shall not, except in the case of gross or willful negligence on our part, be liable or responsible for any loss, costs, damages, or expenses incurred or sustained by anyone resulting from any interpretation made by any of our officers, agents or employees. These interpretations are also subject to our general terms and conditions set out in our current Price Schedule.

Comments

CEMENT BOND LOG RECORDED AS PER CUSTOMER REQUEST  
LOGGED UNDER 0 PSI INDUCED SURFACE PRESSURE & 16' KB  
ESTIMATED TOP OF CEMENT @ 2,720'

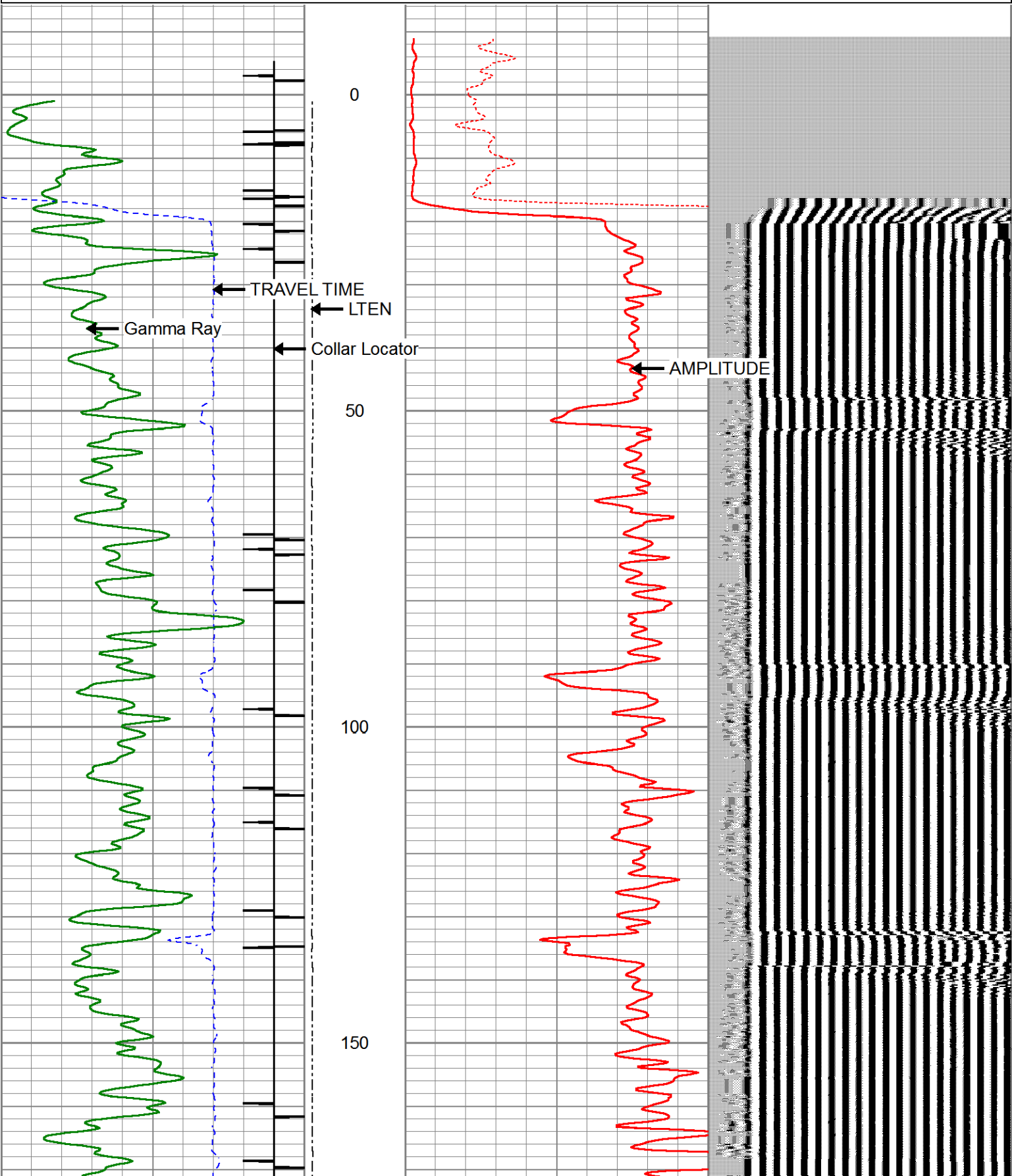
THANK YOU FOR USING KLX ENERGY SERVICES

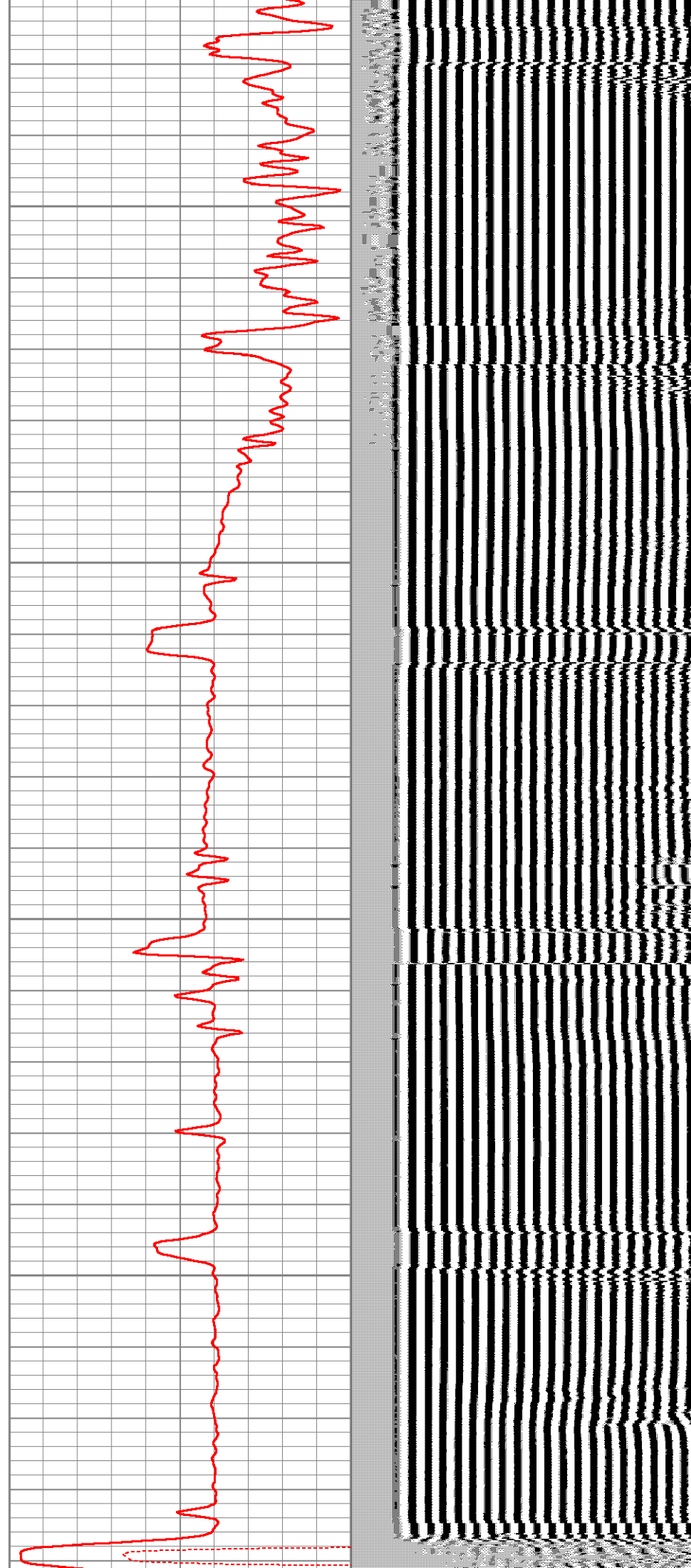
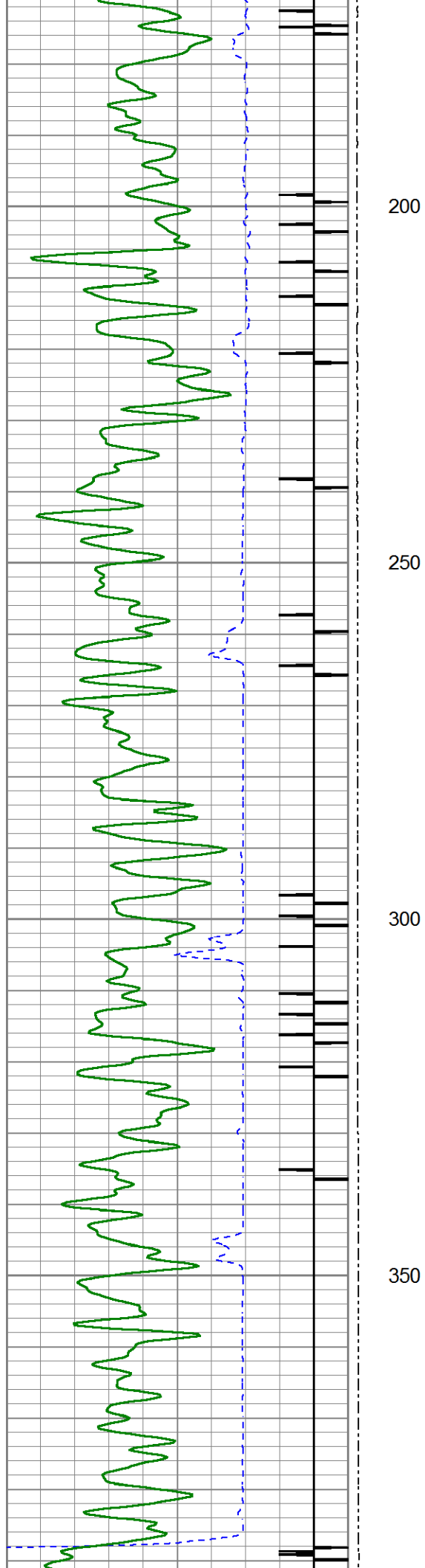


MAIN PASS

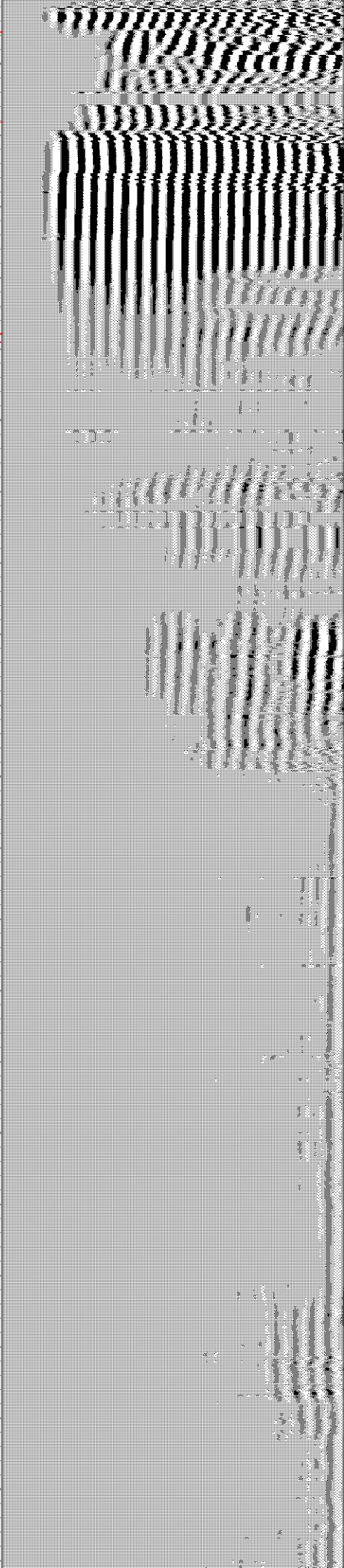
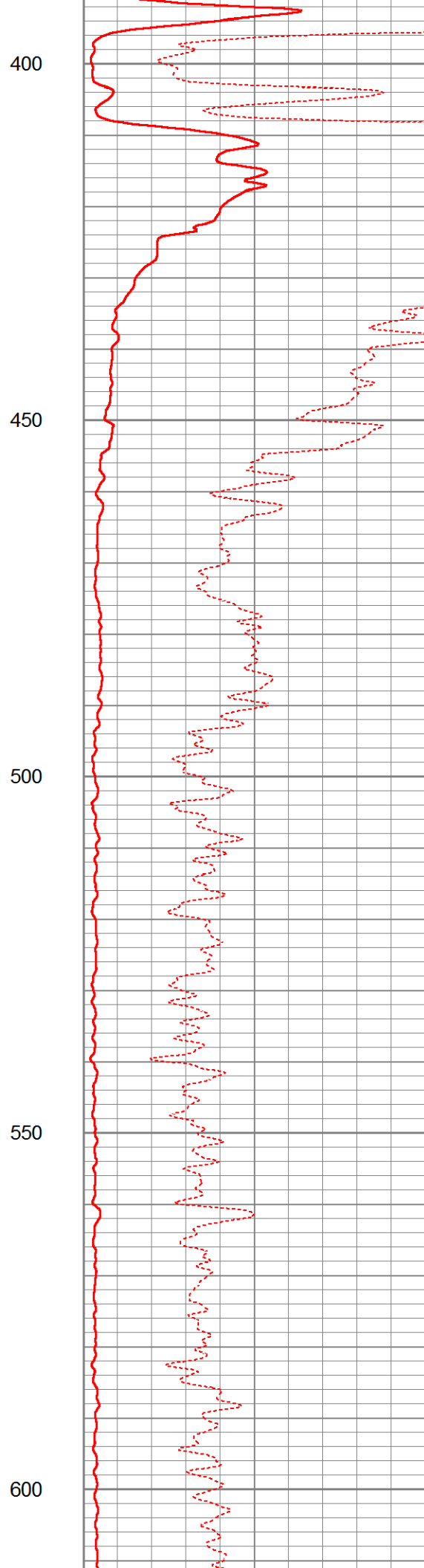
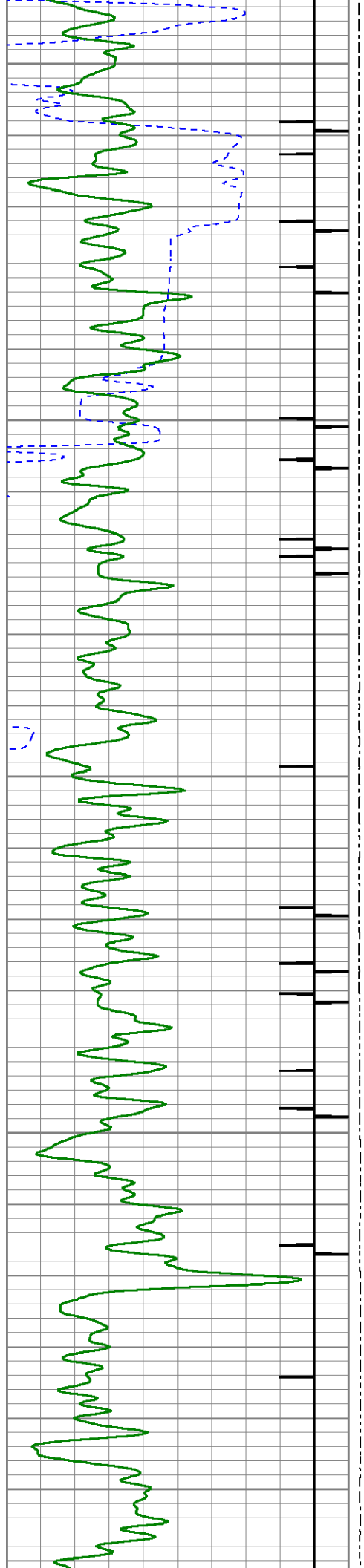
Database File	xog_log_6-13-19.db
Dataset Pathname	pass3
Presentation Format	cbl_drs
Dataset Creation	Thu Jun 13 07:30:19 2019
Charted by	Depth in Feet scaled 1:240

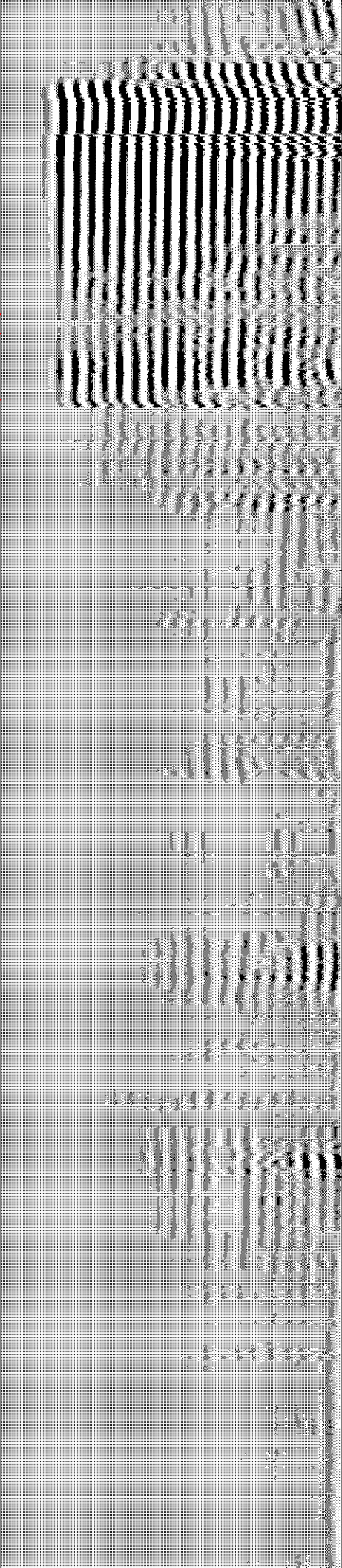
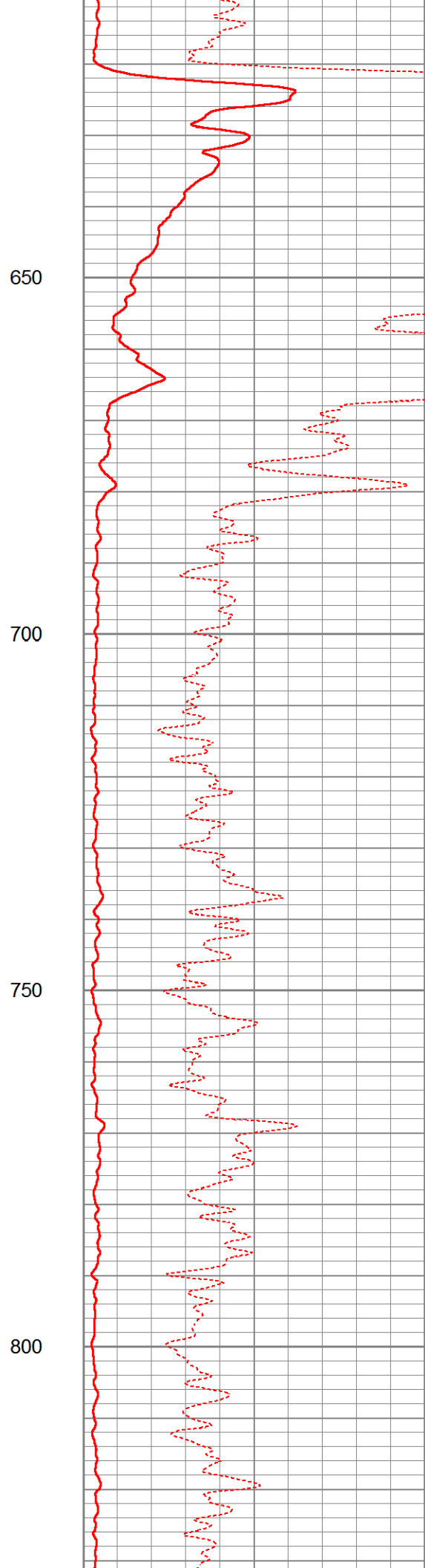
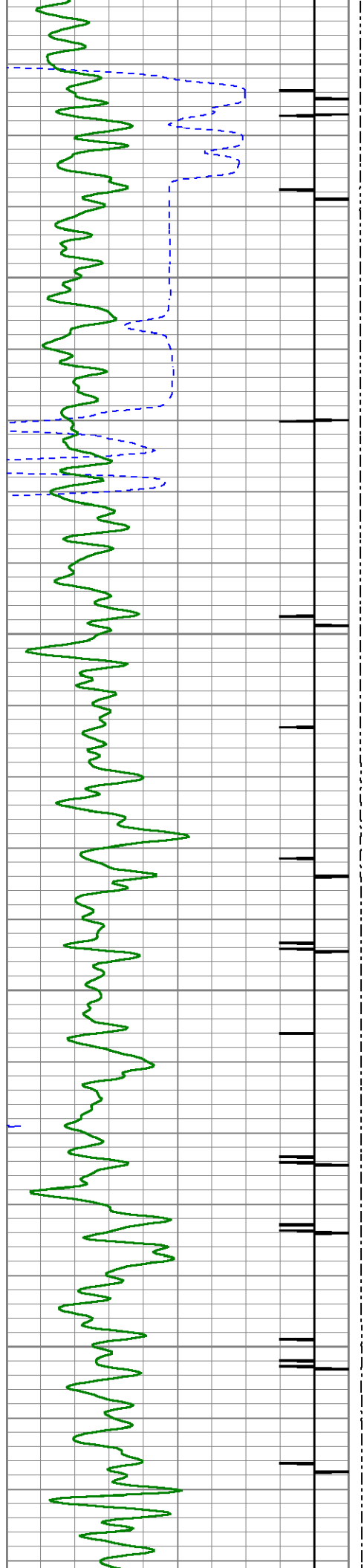
400	TRAVEL TIME (usec)	200	LTEN	0	AMP AMPLITUDE (mV)	10	200	VDL (usec)	1200
9	Collar Locator	-1	0	(lb2000	0	AMPLITUDE (mV)	100		
0	Gamma Ray (GAPI)	150							

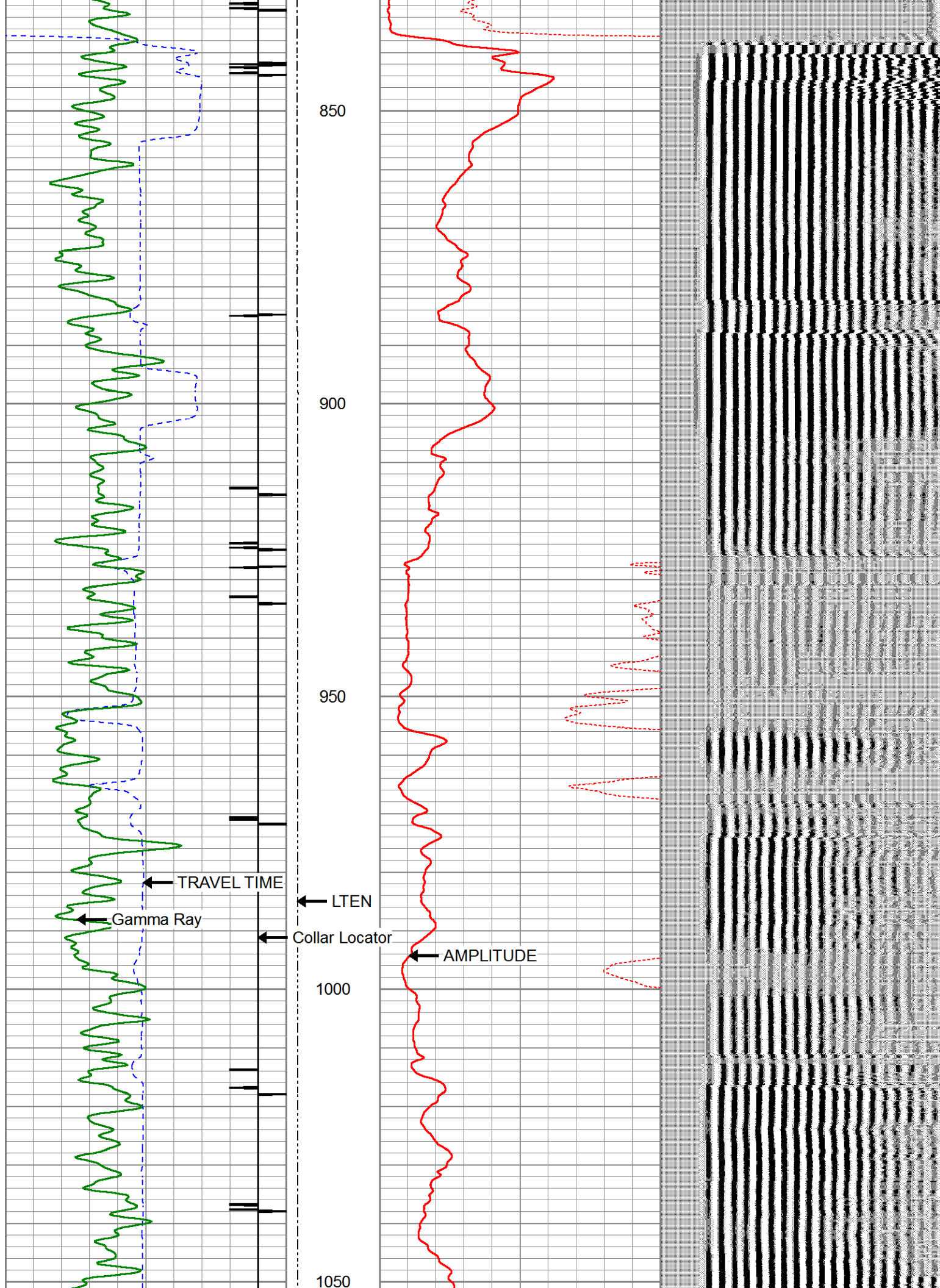




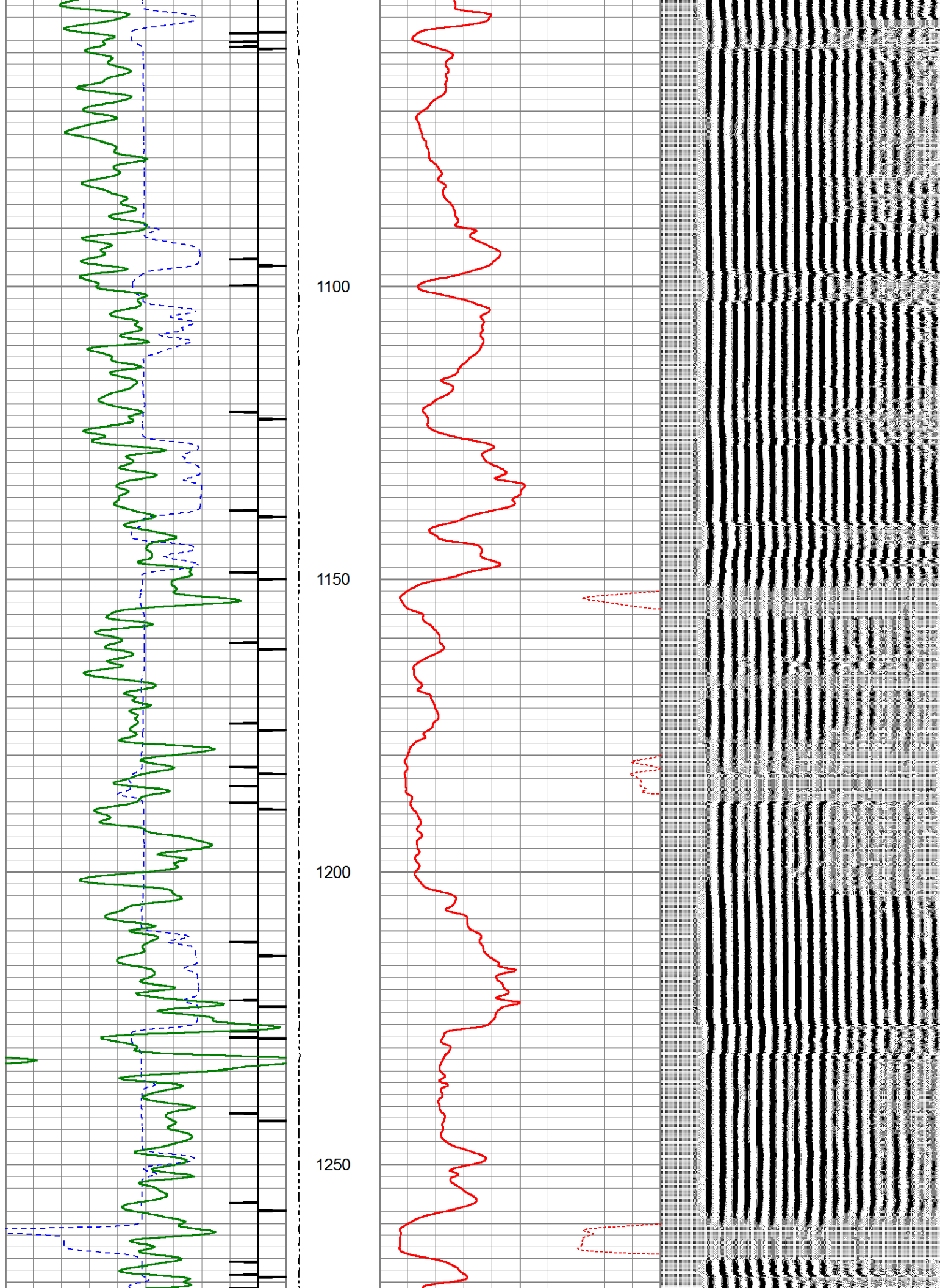


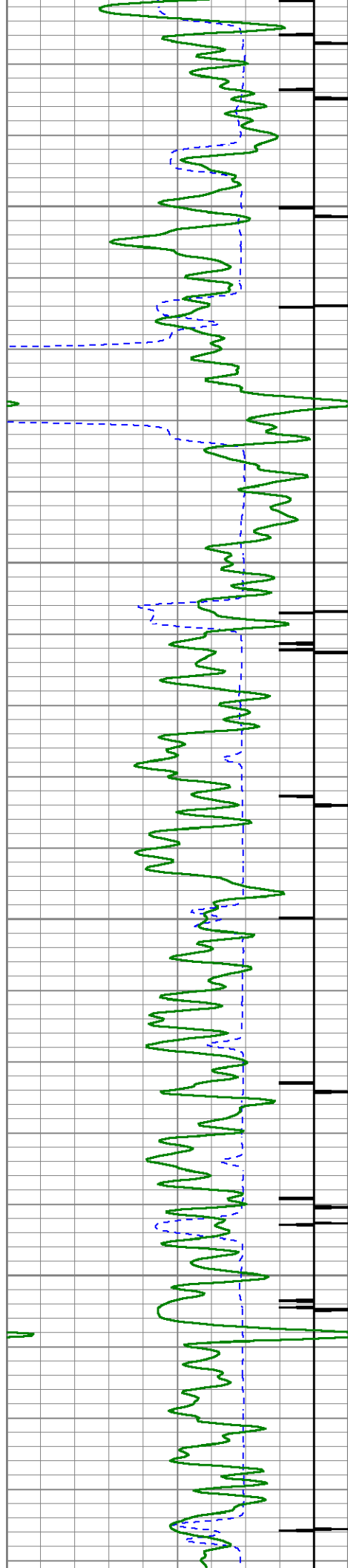










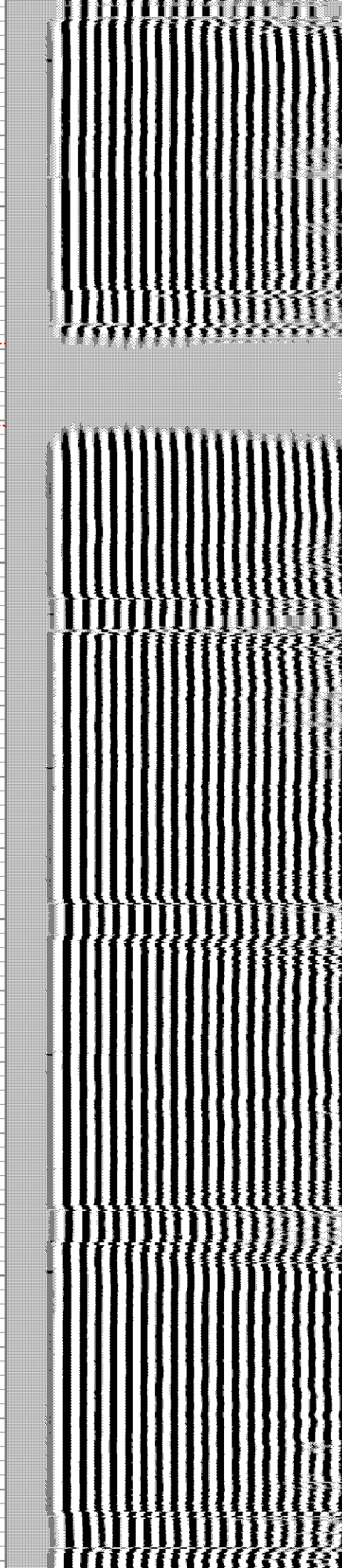
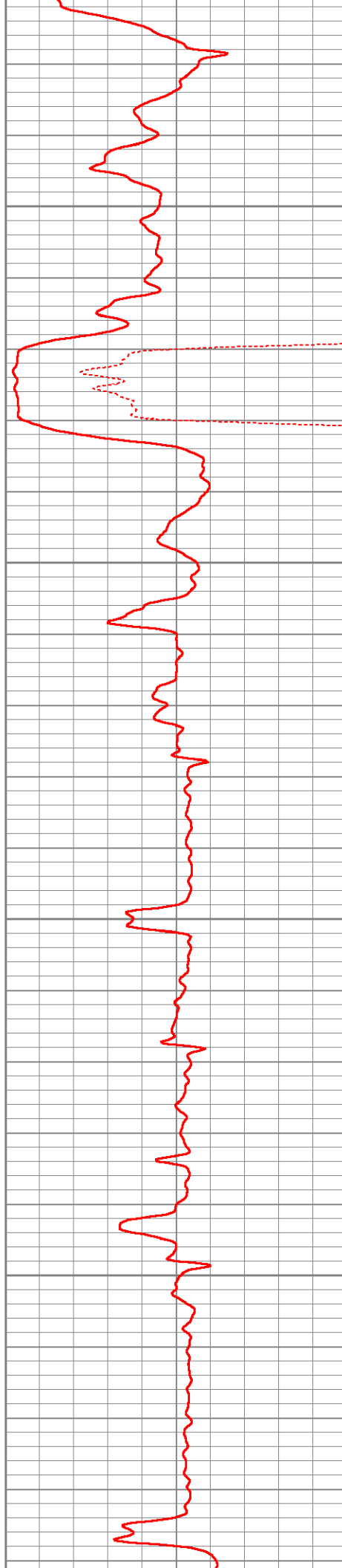


1300

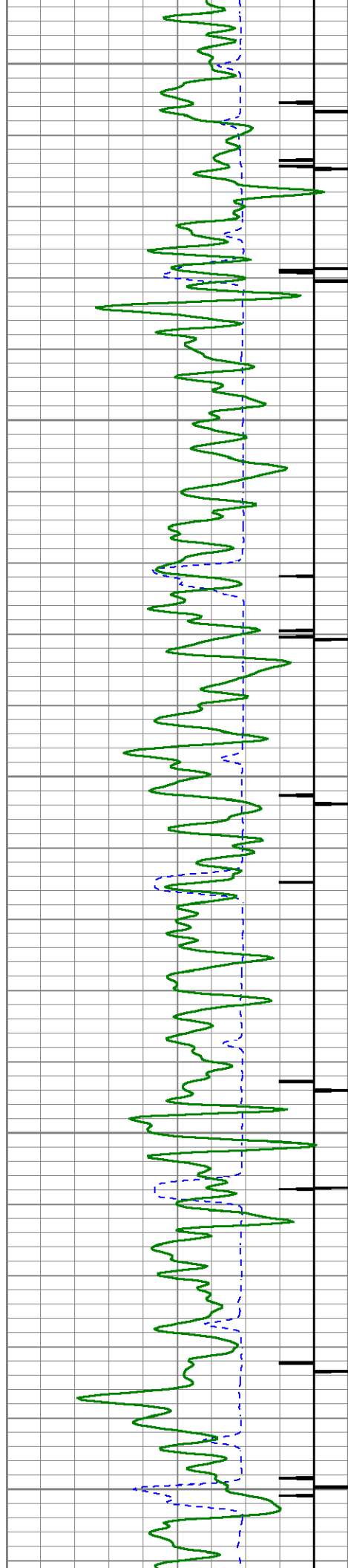
1350

1400

1450







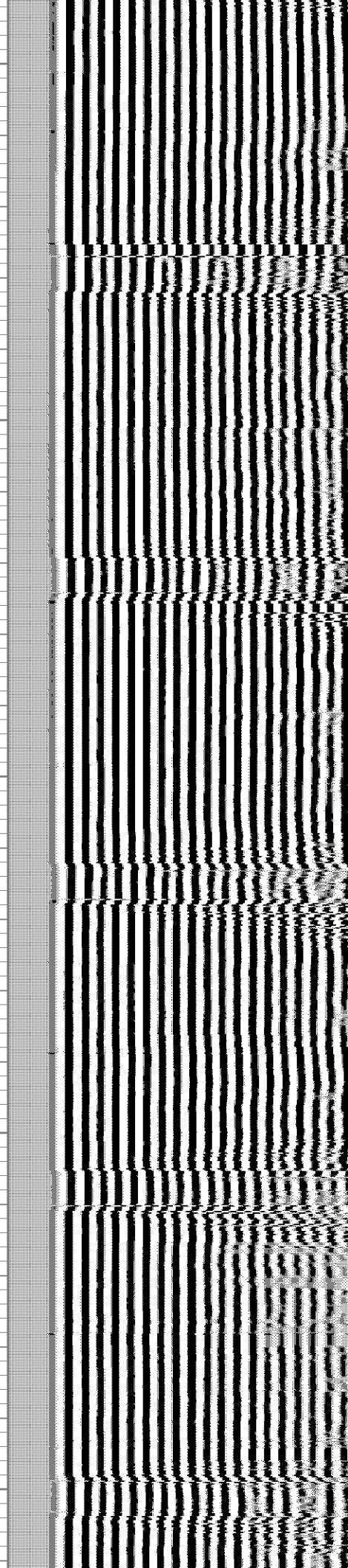
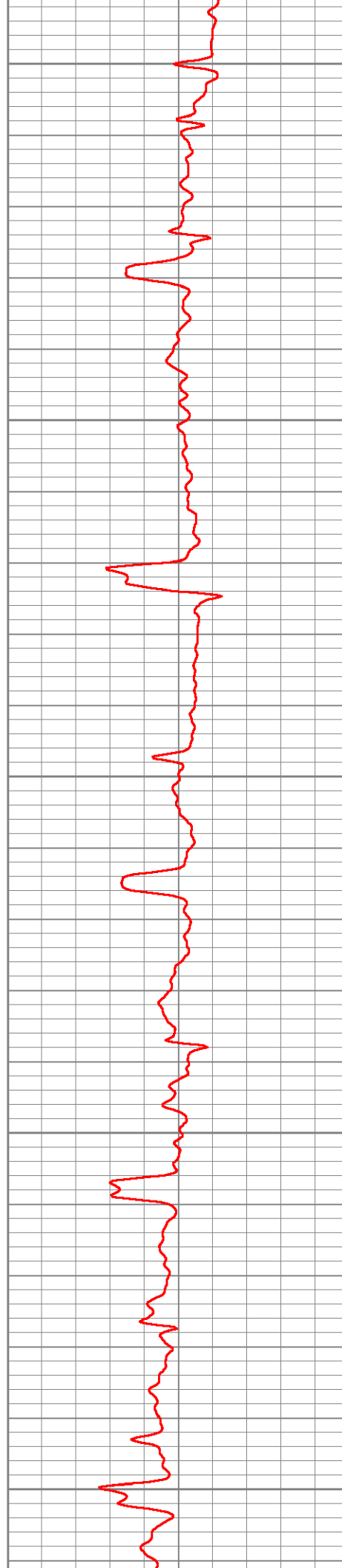
1500

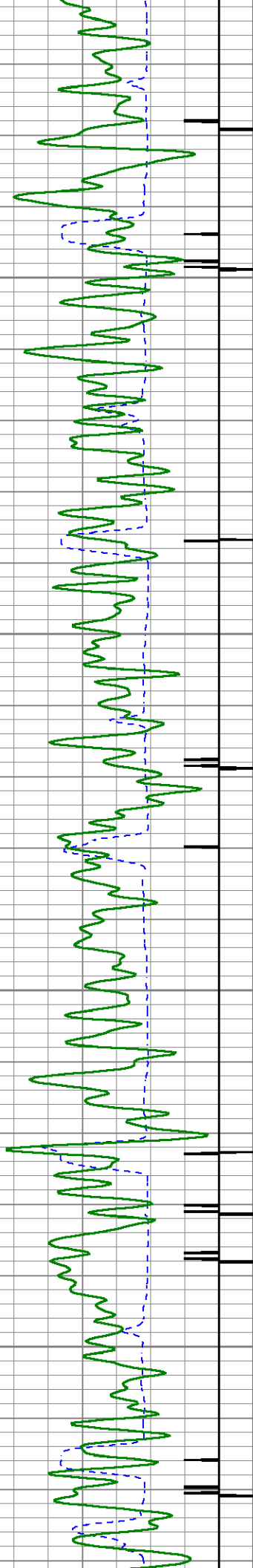
1550

1600

1650

1700



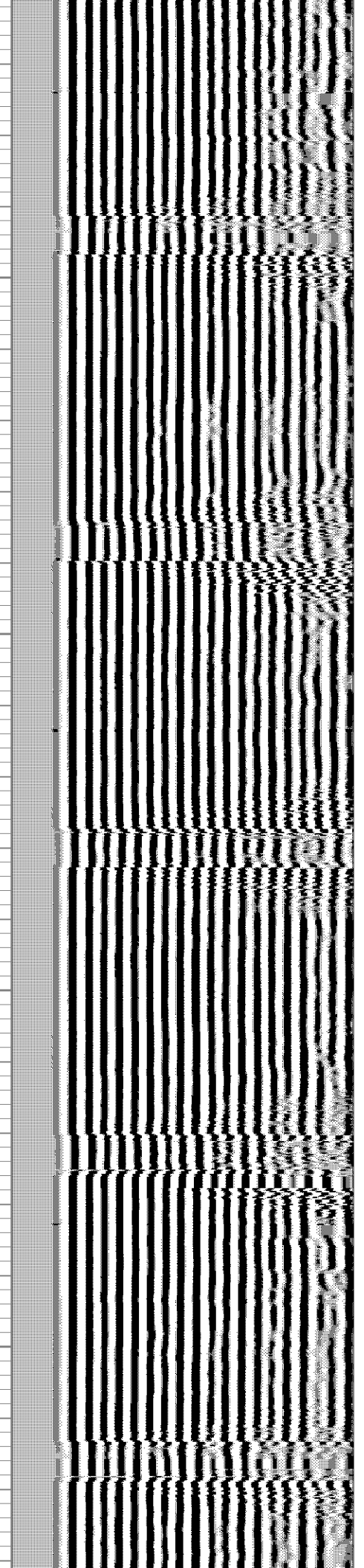


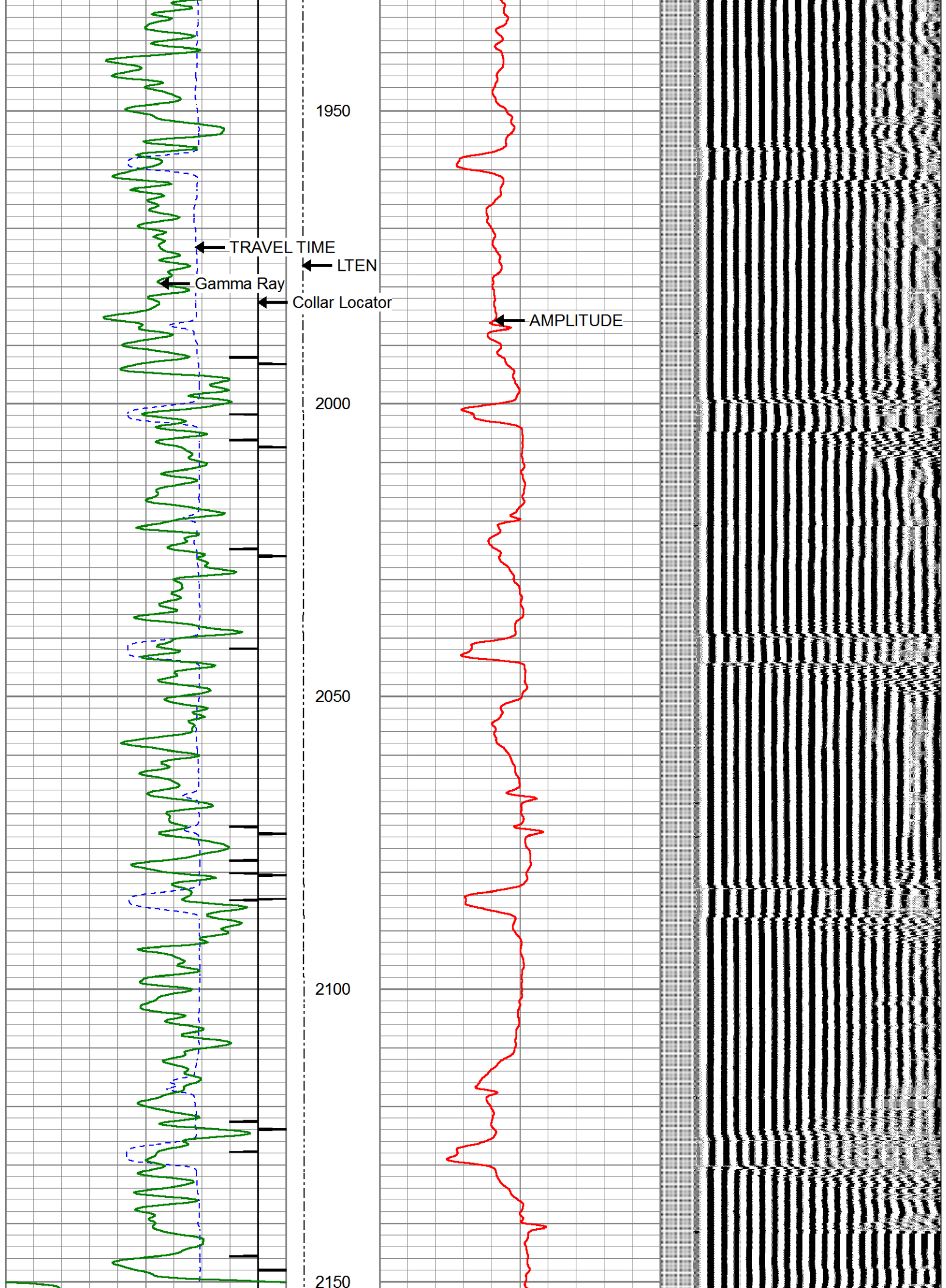
1750

1800

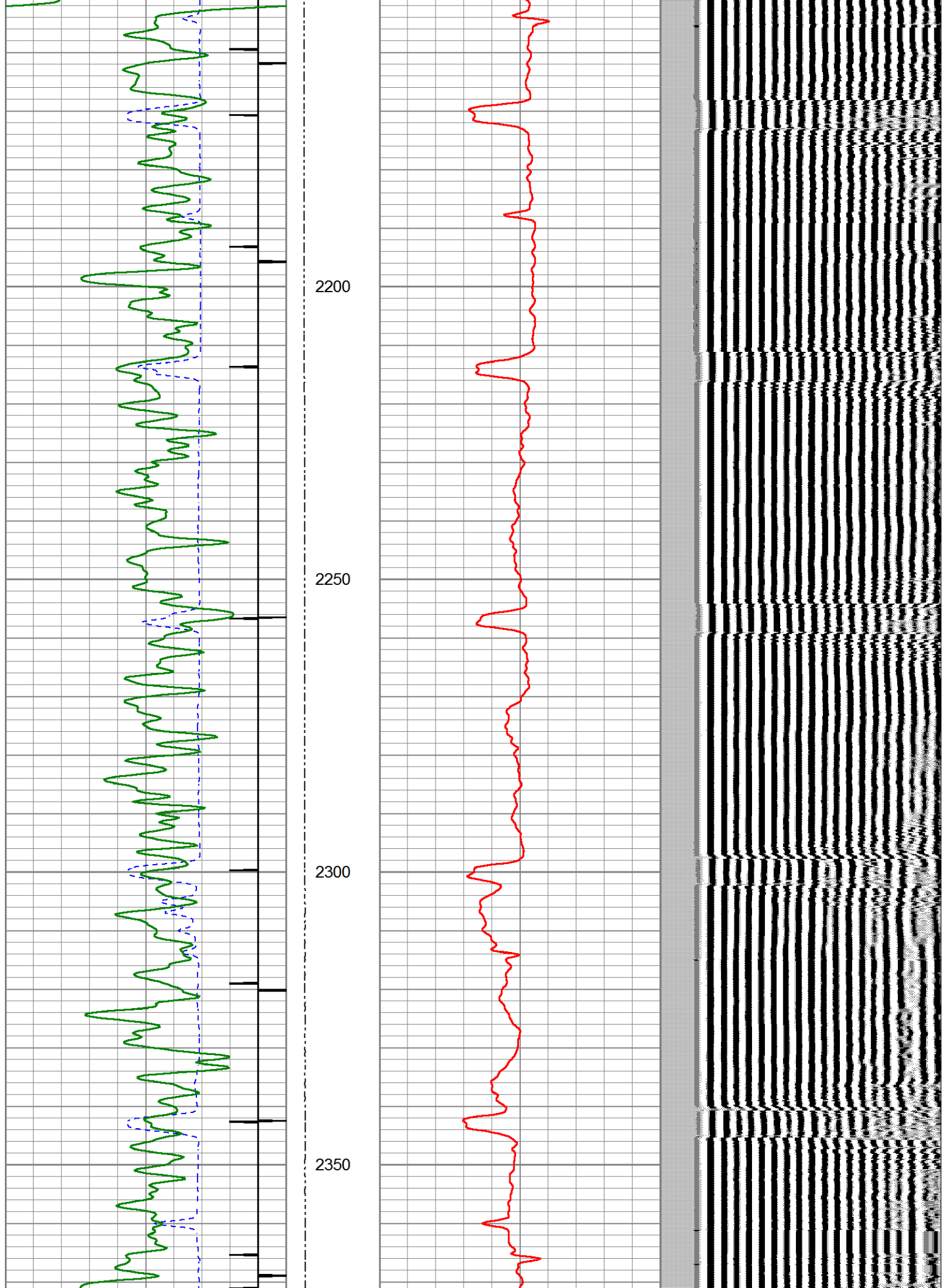
1850

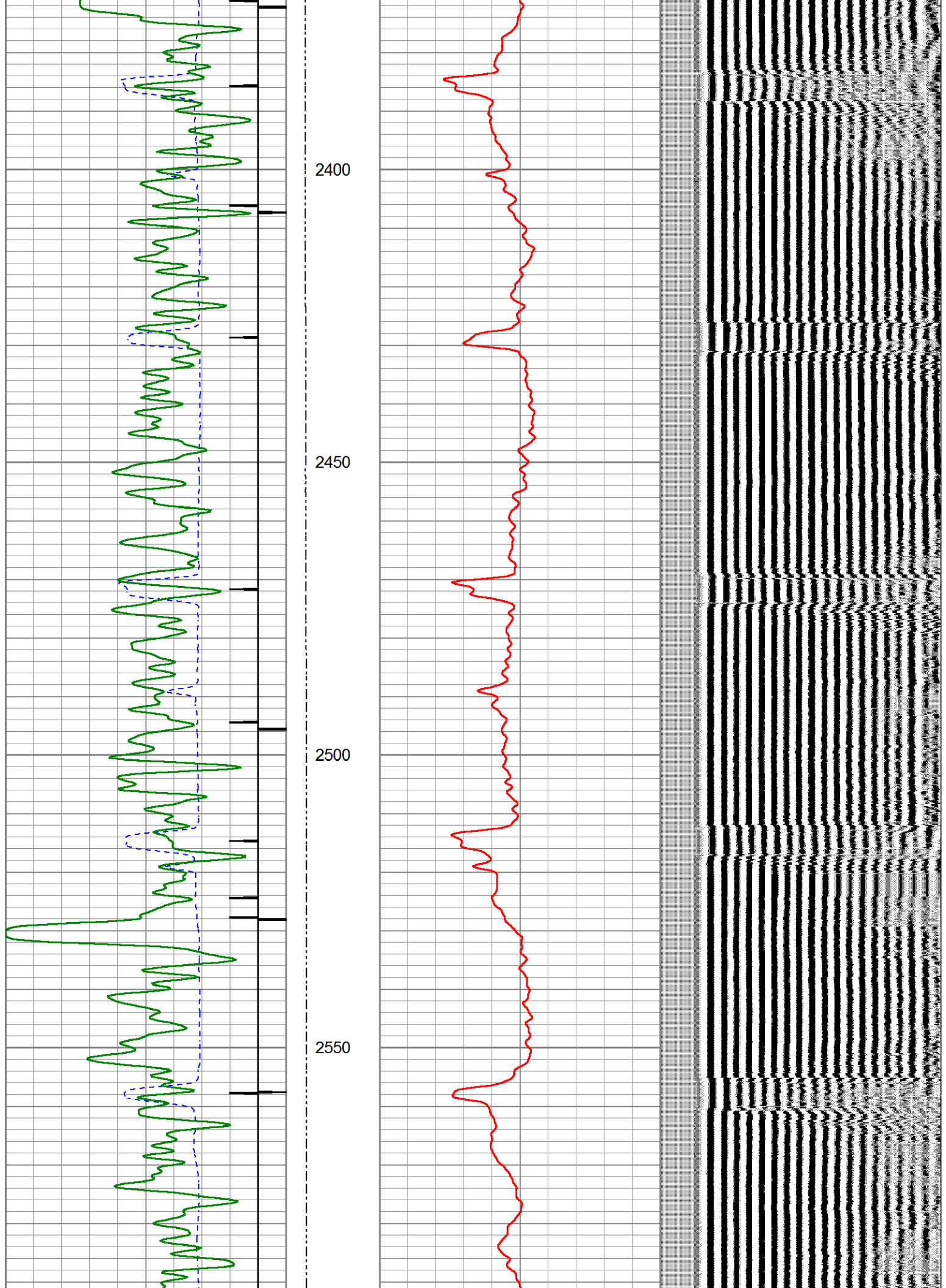
1900

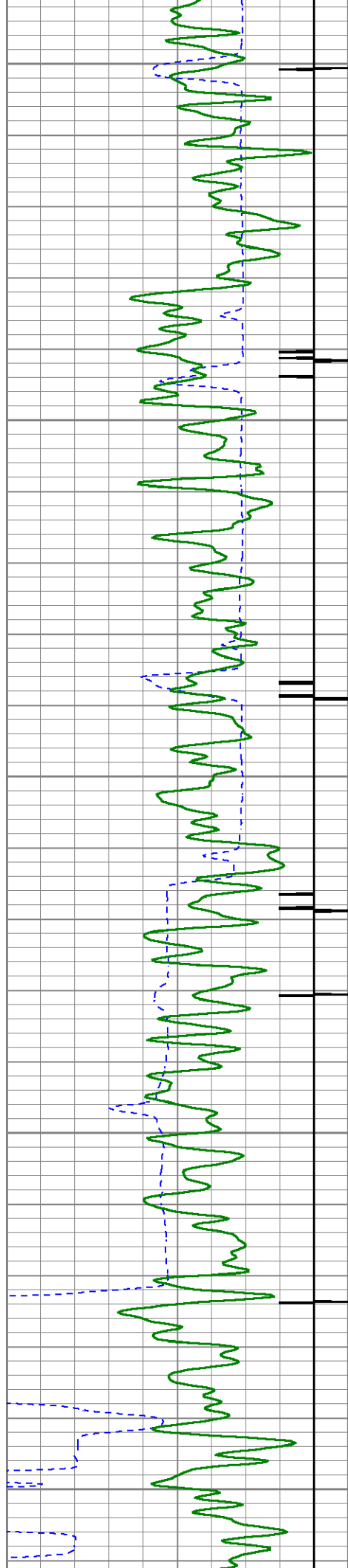












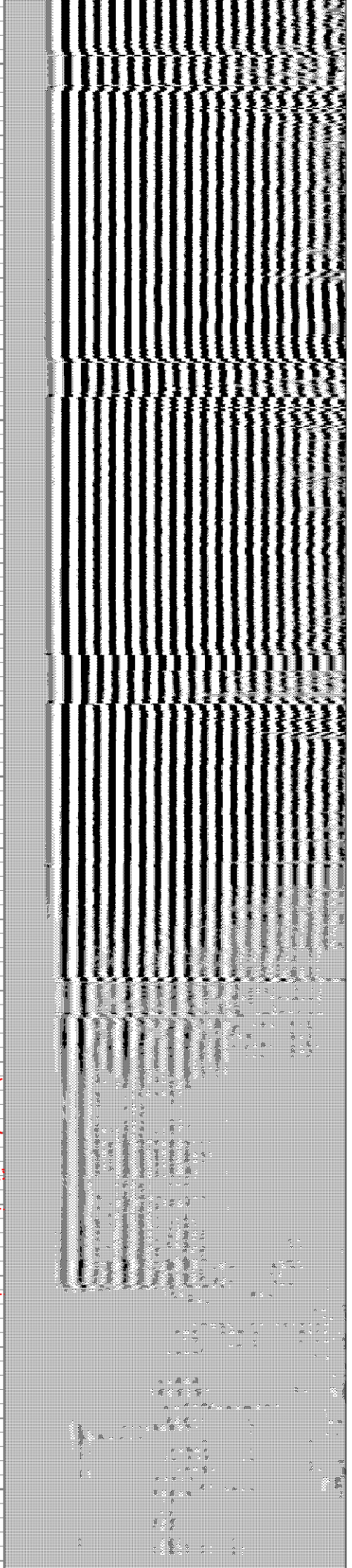
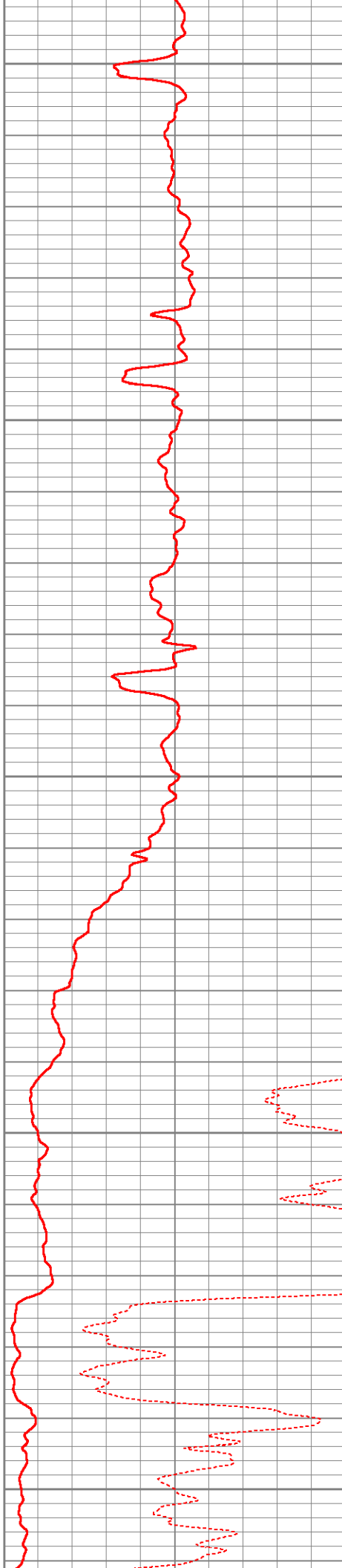
2600

2650

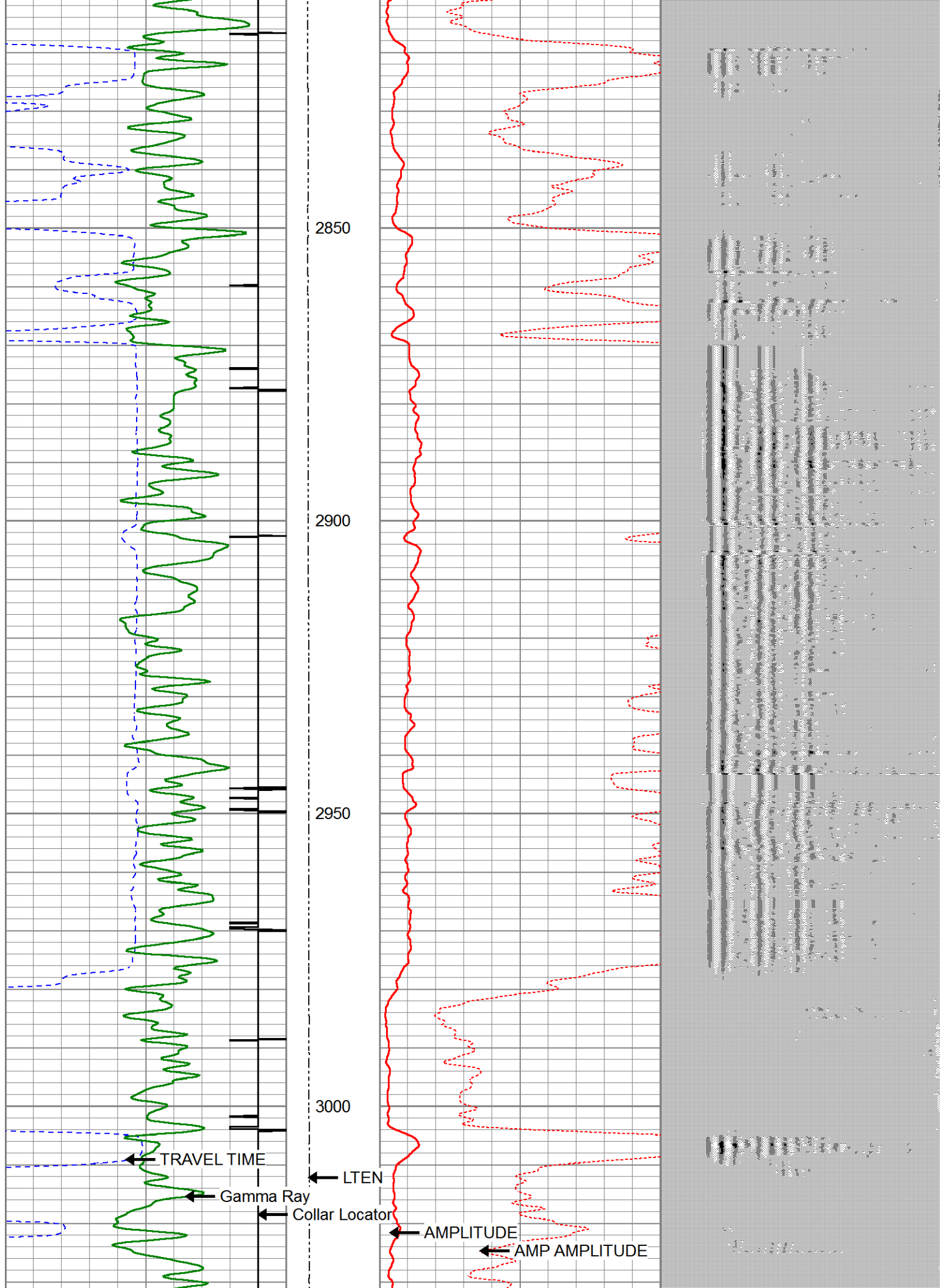
2700

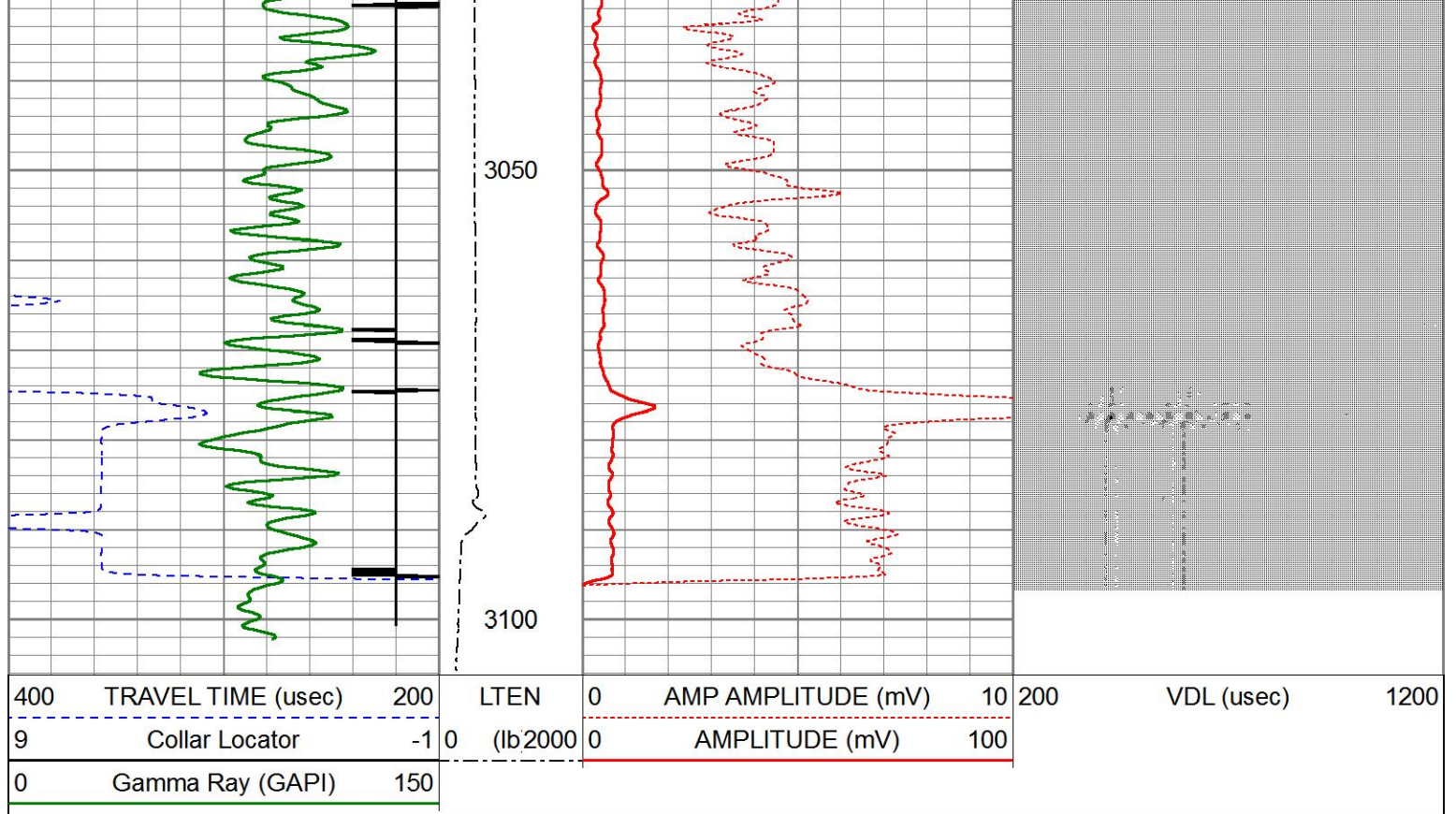
2750

2800










Sensor	Offset (ft)	Schematic	Description	Length (ft)	O.D. (in)	Weight (lb)
HeadVolt	15.69		CHD-Titan Titan 1 7/16" GO Cablehead	1.00	1.44	5.00
Temp	12.84					
WVFS8	10.61		RBT-Probe 2.75 Radii W/Temp (080840) Probe 2.75" Radial with Integral Temperature Sub	9.39	2.75	90.00
WVFS7	10.61					
WVFS6	10.61					
WVFS5	10.61					
WVFS4	10.61					
WVFS3	10.61					
WVFS2	10.61					
WVFS1	10.61					
WVFCAL	10.61					
WVF3FT	10.61					
WVF5FT	9.61					

HEADVOLT	6.36		GR-Probe275dig (080828) HT Probe 2 3/4" Gamma CCL	6.36	2.75	57.00
CCL	5.44					
GR	1.42					
Dataset: xog_log_6-13-19.db: field/well/run1/pass3 Total length: 16.75 ft Total weight: 152.00 lb O.D.: 2.75 in						