



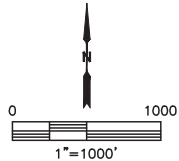
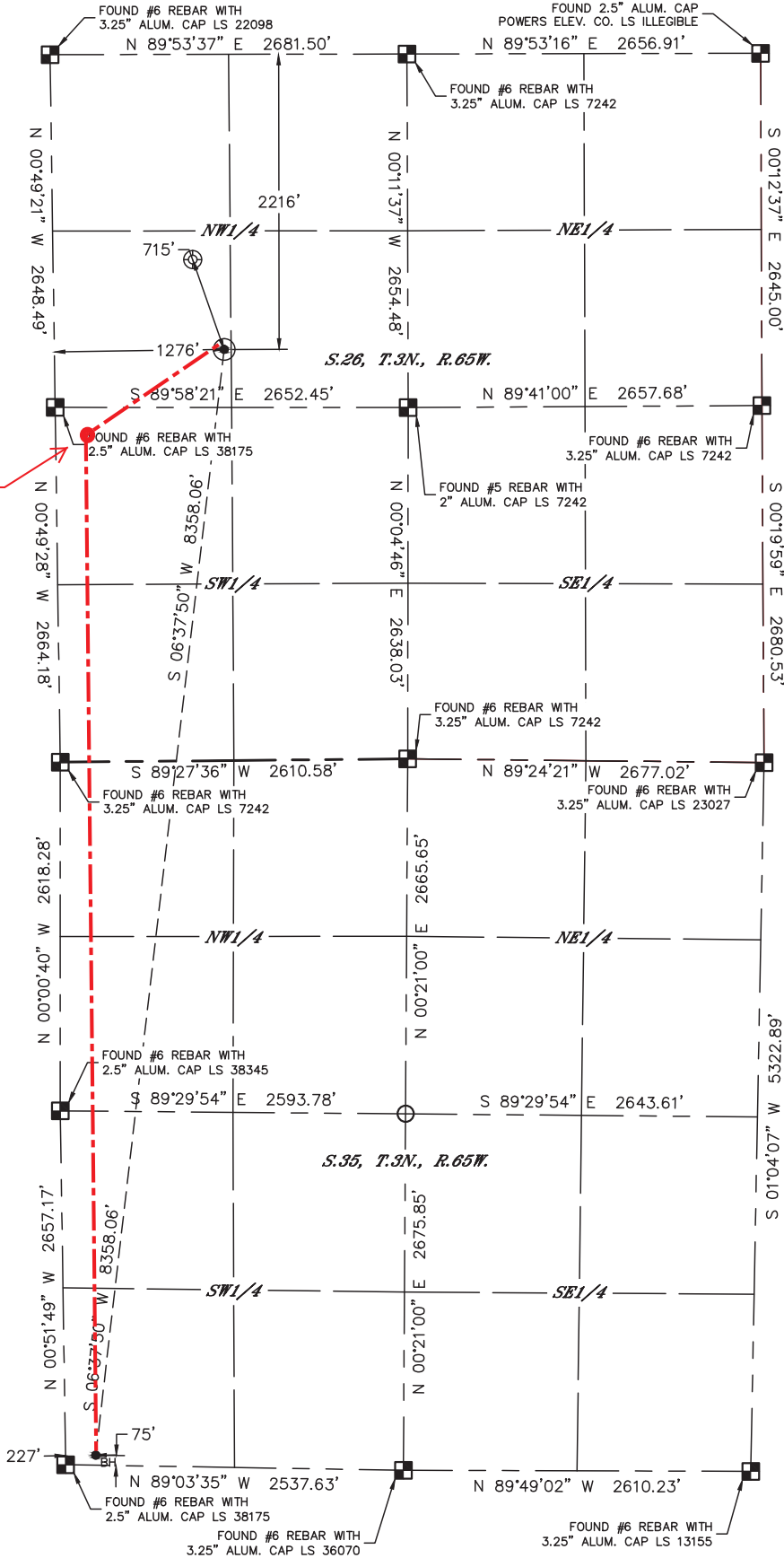
Lat40°, Inc. 6250 W. 10th Street, Unit 2, Greeley, CO 970-515-5294

WELL LOCATION CERTIFICATE
HURLEY H35-787

SECTION: 26
TOWNSHIP: 3N
RANGE: 65W
6TH. P.M.
WELD COUNTY, CO

APPROVED

Approximate Top of Producing
Zone: 2320' FSL, 227' FWL,
Sec 26, T3N- R65W.
HAND DRAWN 6/5/2019
Depiction was not surveyed and was
added by NBL

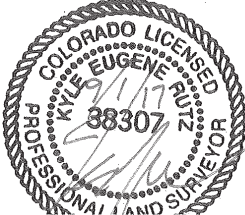


CLIENT: NOBLE ENERGY, INC.					LANDMAN: TYLER BEAVERS					
INSTRUMENT OPERATOR: SCOTT SHERARD					SURVEY DATE: 4/3/2017		SURFACE USE: CROP LAND			
SHL FOOTAGE			SHL LAT°		SHL LONG°		SHL PDOP	SHL ELEV (FT.)	SHL 1/4/1/4	SHL S-T-R
2216	FNL	1276	FWL	40.19752	-104.63564		1.9	4821	SWNW	26-3-65

BHL FOOTAGE			BHL LAT°		BHL LONG°		BHL S-T-R	
75	FSL	227	FWL	40.17476	-104.63939		35-3-65	

- NOTE:
- Bearings shown are Grid Bearings of the Colorado State Plane Coordinate System, North Zone, North American Datum 1983. The lineal dimensions as contained herein are based upon the "U.S. Survey Foot."
 - Distances to section lines measured at 90 degrees from said section lines.
 - Ground elevations are based on an observed GPS elevation (NAVD 1988 DATUM).
 - Latitude and Longitude shown are (NAD 83 DATUM).
 - IMPROVEMENTS: See LOCATION DRAWING for all visible improvements within 500' of oil and gas location.
 - This map does not represent a boundary survey.

- LEGEND
- = ALIQUOT MONUMENT AS DESCRIBED
 - = CALCULATED POSITION
 - = SURFACE HOLE LOCATION (SHL)
 - ▲ = ENTRY POINT LOCATION (EP)
 - ⊗ = BOTTOM HOLE LOCATION (BHL)
 - ⊗ = EXISTING WELL
 - ⊗ = ABANDONED WELL



Kyle E. Rutz-On behalf of Lat40°, Inc.
Colorado Licensed/Professional Land Surveyor No. 38307
DATE: 9/1/2017
PROJECT#: 2017022