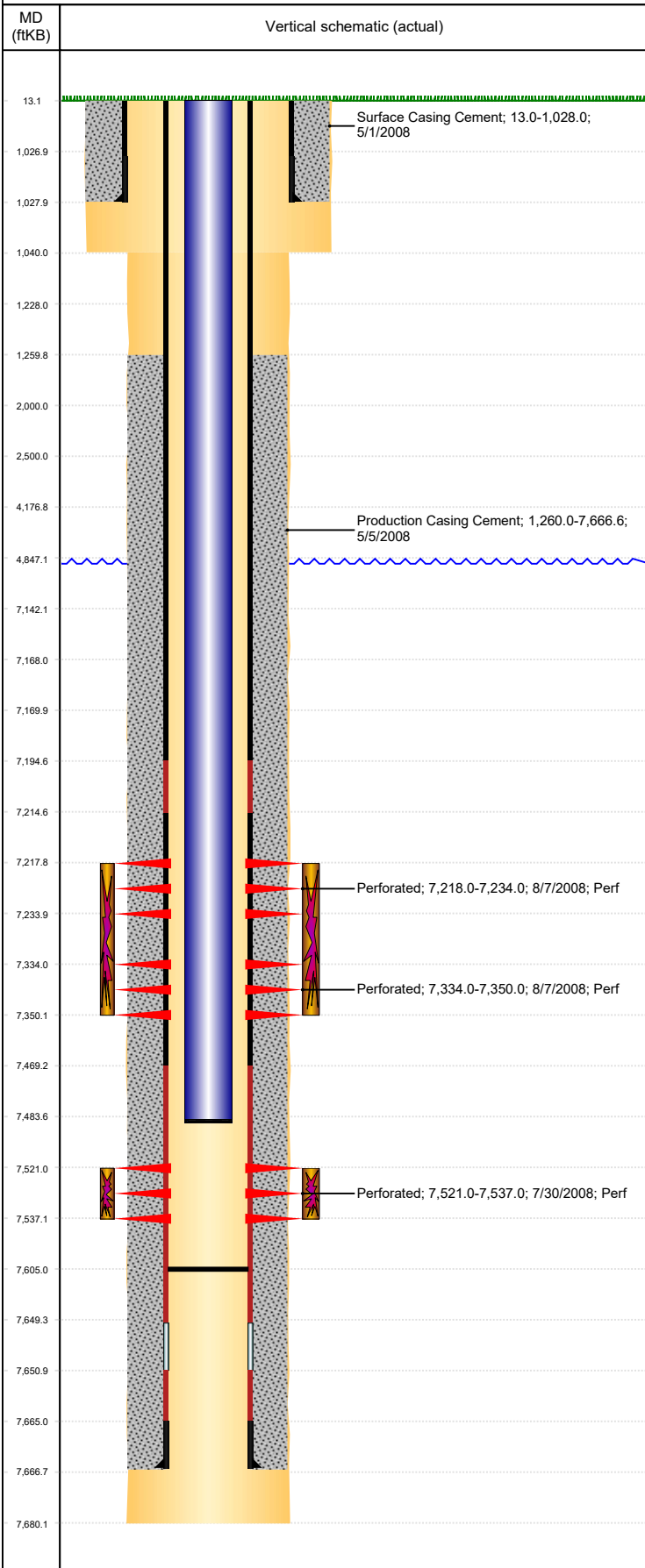


Well Name: WEEZER G03-22

DEVIATED, ORIGINAL HOLE, 6/12/2019 11:42:03 AM



Well Header

API 05-123-25720	Business Unit DJ BASIN	District 15	Well Config DEVIATED
KB - GL / MSL (ft... 13.00	Spud Date 4/30/2008	P & A Date	Well Production Status PR
Comment			SoRT No

Surface Location (Congressional)

Qtr 3 SE	Qtr 4 SW	Section 3	Twnshp 4	Twnsh... N	Range 65	Rng E... W	Actual Latitude (°) 40.33595465	Actual Longitude (°) -104.65134041
-------------	-------------	--------------	-------------	---------------	-------------	---------------	------------------------------------	---------------------------------------

Wellbore Sections

Section Des	Size (in)	Act Top, MD (ftKB)	Act Btm, MD (ftKB)
SURFACE	12 1/4	13	1,040
PRODUCTION	7 7/8	1040	7,680

Casing Strings

Csg Des	Run Date	OD (in)	Wt/Len (lb/ft)	Grade	Top, MD (ftKB)	MD (ftKB)
Surface	5/1/2008	8 5/8	24.00	J-55	13.0	1,028.0
Production	5/4/2008	4 1/2	11.60	M-80	13.0	7,666.5

Cement

Des	Start Date	Top (ftKB)	Btm (ftKB)
Surface Casing Cement	5/1/2008	13.0	1,028.0
Production Casing Cement	5/5/2008	1,260.0	7,666.6

Zone Statuses

Zone Name	Status Date	Status	Fluid Type	Job	Prod Method
NIOBRARA	8/8/2008	PR		DRILLING/COMPLETION - ORIGINAL, 4/30/2008...	
CODELL	8/8/2008	PR		DRILLING/COMPLETION - ORIGINAL, 4/30/2008...	

Perforation Data

Linked Zone	Bnch/Stg	Entered Shot Total	Top (ftKB)	Btm (ftKB)	Date
NIOBRARA, ORIGINAL HOLE	A	64	7,218.00	7,234.00	8/7/2008
NIOBRARA, ORIGINAL HOLE	B	64	7,334.00	7,350.00	8/7/2008
CODELL, ORIGINAL HOLE		64	7,521.00	7,537.00	7/30/2008

Stimulation Intervals

Zone	Start Date	Top (ftKB)	Btm (ftKB)
NIOBRARA, ORIGINAL HOLE	8/7/2008	7,218.0	7,350.0
CODELL, ORIGINAL HOLE	8/7/2008	7,521.0	7,537.0

Other In Hole

Run Date	Des	OD (in)	Top (ftKB)	Btm (ftKB)
9/24/2018	Plunger Lift	1 7/8		

Logs

Date	Type	Top, MD (ftKB)	Btm, MD (ftKB)
5/4/2008	Caliper/Comp. Density/Neutron/GR/SP/ML	1,028.0	7,669.0
5/4/2008	DIL/GR/SP/Caliper	1,028.0	7,669.0
5/29/2008	Radial Cement	1,070.0	7,614.0

Plug Back Total Depths

Date	Type	Com	Depth (ftKB)
5/4/2008	LATCH DOWN COLLAR		
11/4/2008	PLUG REMNANTS	BURNED OVER CIFTF AND CHASED TO 7605' KB. POH & SH...	7,605.0