



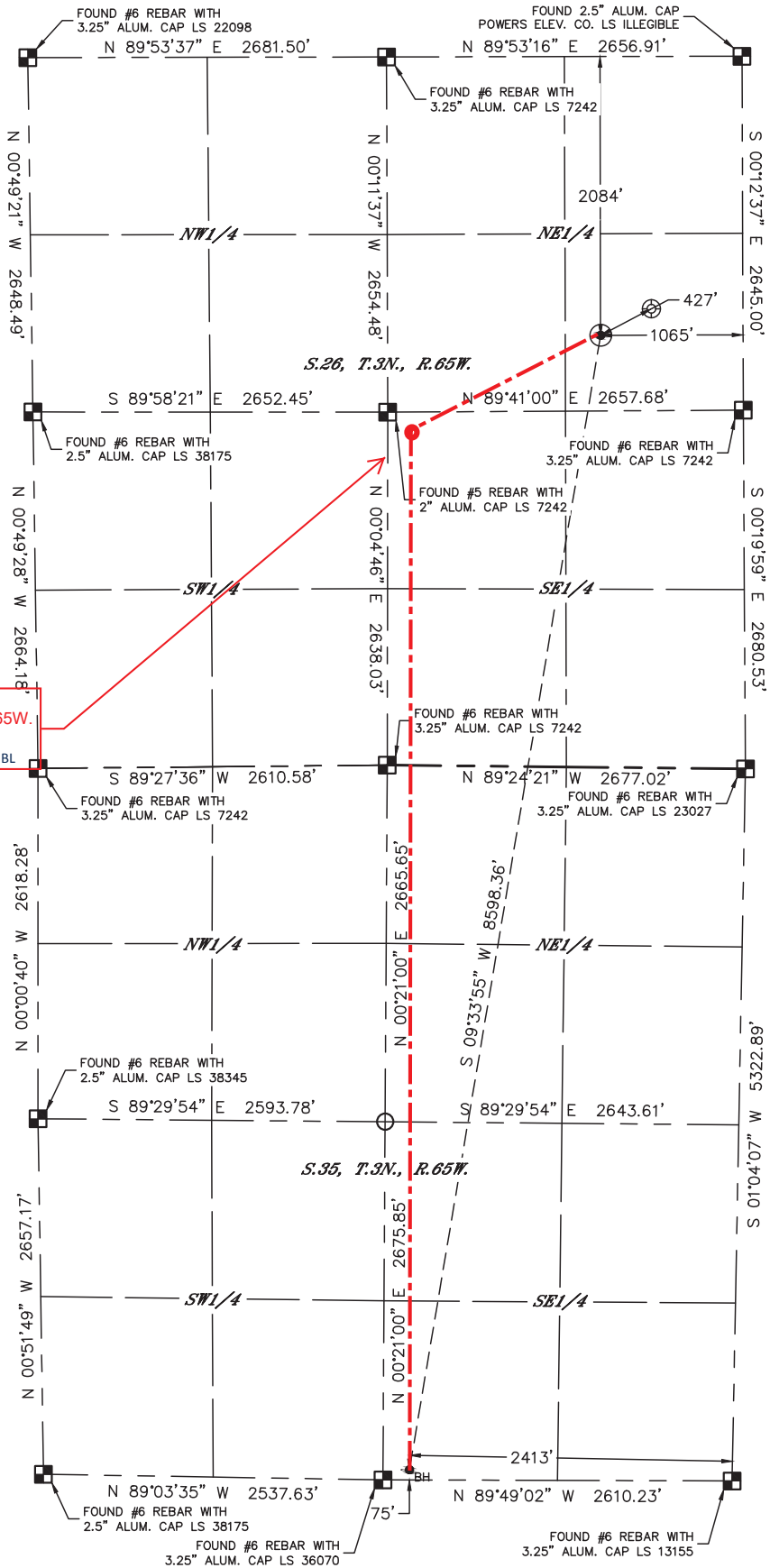
Lat40°, Inc. 6250 W. 10th Street, Unit 2, Greeley, CO 970-515-5294

WELL LOCATION CERTIFICATE

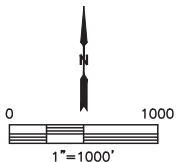
HURLEY H35-746

SECTION: 26
TOWNSHIP: 3N
RANGE: 65W
6TH. P.M.
WELD COUNTY, CO

APPROVED



Approximate Top of Producing Zone:
2321' FSL, 2413' FEL, Sec 26, T3N- R65W.
HAND DRAWN 6/5/2019
Depiction was not surveyed and was added by NBL

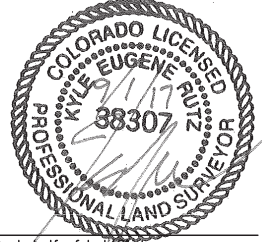


CLIENT: NOBLE ENERGY, INC.			LANDMAN: TYLER BEAVERS			
INSTRUMENT OPERATOR: SCOTT SHERARD			SURVEY DATE: 4/3/2017		SURFACE USE: RANGELAND	
SHL FOOTAGE	SHL LAT°	SHL LONG°	SHL PDOP	SHL ELEV (FT.)	SHL 1/4/1/4	SHL S-T-R
2084 FNL	1065 FEL	40.19781	-104.62500	1.9	4854	SENE 26-3-65

BHL FOOTAGE	BHL LAT°	BHL LONG°	BHL S-T-R
75 FSL	2413 FEL	40.17459	-104.63041 35-3-65

- NOTE:
- 1) Bearings shown are Grid Bearings of the Colorado State Plane Coordinate System, North Zone, North American Datum 1983. The lineal dimensions as contained herein are based upon the "U.S. Survey Foot."
 - 2) Distances to section lines measured at 90 degrees from said section lines.
 - 3) Ground elevations are based on an observed GPS elevation (NAVD 1988 DATUM).
 - 4) Latitude and Longitude shown are (NAD 83 DATUM).
 - 5) IMPROVEMENTS: See LOCATION DRAWING for all visible improvements within 500' of oil and gas location.
 - 6) This map does not represent a boundary survey.

- LEGEND
- = ALIQUOT MONUMENT AS DESCRIBED
 - = CALCULATED POSITION
 - = SURFACE HOLE LOCATION (SHL)
 - ▲ = ENTRY POINT LOCATION (EP)
 - = BOTTOM HOLE LOCATION (BHL)
 - ⊙ = EXISTING WELL
 - ⊙ = ABANDONED WELL



Kyle E. Rutz-On behalf of Lat40, Inc.
Colorado Licensed Professional Land Surveyor No. 38307
DATE: 9/1/2017
PROJECT#: 2017022