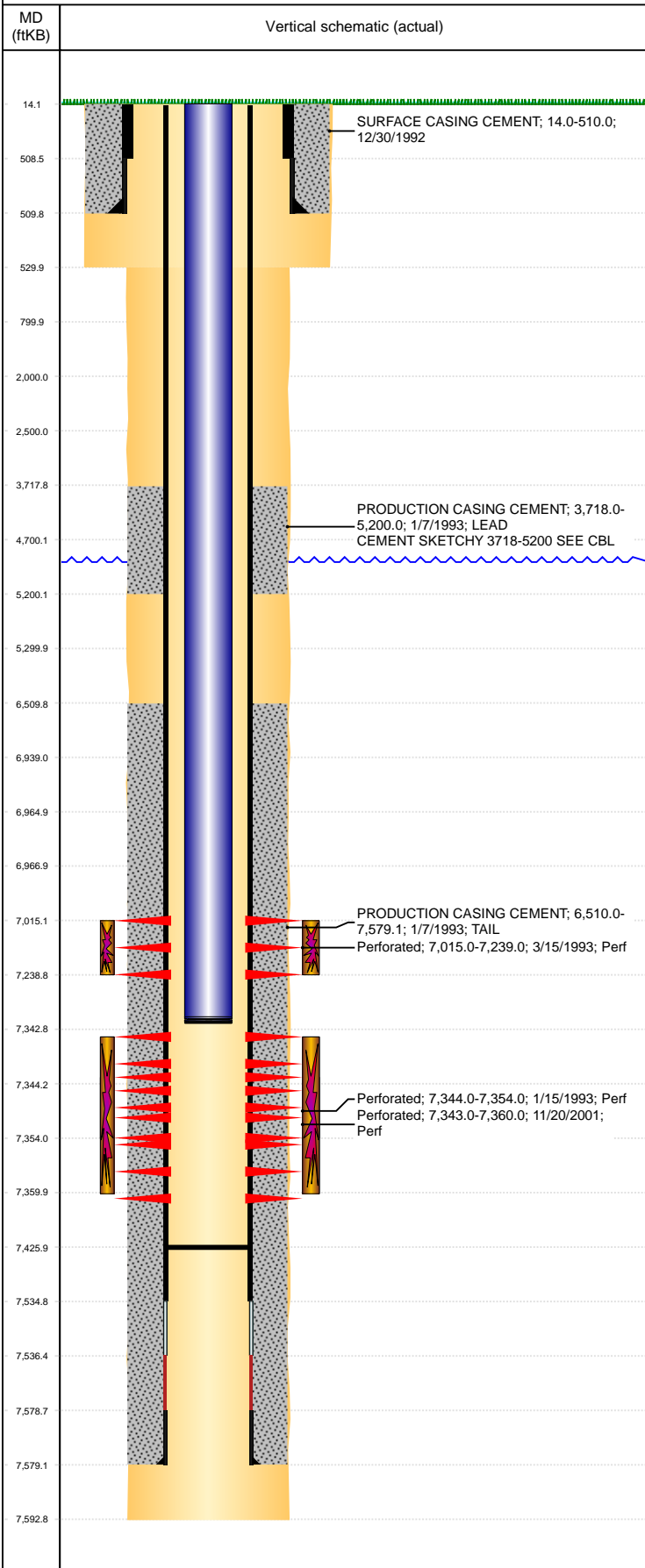


**Well Name: UPRC 29-08C**

VERTICAL, ORIGINAL HOLE, 6/12/2019 10:46:57 AM



Well Header									
API 05-123-16442		Business Unit DJ BASIN		District 15		Well Config VERTICAL			
KB - GL / MSL (ft... 14.00		Spud Date 12/30/1992		P & A Date		Well Production Status SI		SoRT No	
Comment DAILY REPORT HAS TD AS 7570, FORM 5 HAS 7593. 7593 WAS USED FOR TD FOR ALL OTHER JOBS SO KEPT IT AS 7593. SEE CBL, CEMENT SKETCHY FROM 3718-5200.									
Surface Location (Congressional)									
Qtr 3 SE	Qtr 4 NE	Section 29	Twnshp 5	Twnsh... N	Range 66	Rng E... W	Actual Latitude (°) 40.37183708	Actual Longitude (°) -104.79701080	
Wellbore Sections									
Section Des		Size (in)		Act Top, MD (ftKB)		Act Btm, MD (ftKB)			
SURFACE PRODUCTION		12 1/4 7 7/8		14 530		530 7,593			
Casing Strings									
Csg Des		Run Date	OD (in)	Wt/Len (lb/ft)	Grade	Top, MD (ftKB)	MD (ftKB)		
Surface		12/30/1992	8 5/8	23.00	WC-50	14.0	510.0		
Production		1/7/1993	4 1/2	11.60	M-75	14.0	7,579.1		
Cement									
Des		Start Date		Top (ftKB)		Btm (ftKB)			
SURFACE CASING CEMENT		12/30/1992		14.0		510.0			
PRODUCTION CASING CEMENT		1/7/1993		3,718.0		5,200.0			
PRODUCTION CASING CEMENT		1/7/1993		6,510.0		7,579.1			
Zone Statuses									
Zone Name	Status Date	Status	Fluid Type	Job			Prod Method		
CODELL	12/19/2007	PR		TRI-FRAC, 11/1/2007 00:00					
CODELL	9/1/2017	SI							
NIOBRARA	4/27/1993	PR		RECOMPLETION, 3/15/1993 00:00					
NIOBRARA	9/1/2017	SI							
Perforation Data									
Linked Zone	Bnch/Stg	Entered Shot Total	Top (ftKB)	Btm (ftKB)	Date				
NIOBRARA, ORIGINAL HOLE		34	7,015.00	7,239.00	3/15/1993				
CODELL, ORIGINAL HOLE		72	7,343.00	7,360.00	11/20/2001				
CODELL, ORIGINAL HOLE		20	7,344.00	7,354.00	1/15/1993				
Stimulation Intervals									
Zone		Start Date		Top (ftKB)		Btm (ftKB)			
NIOBRARA, ORIGINAL HOLE		3/16/1993		7,015.0		7,239.0			
CODELL, ORIGINAL HOLE		11/29/2001		7,343.0		7,360.0			
CODELL, ORIGINAL HOLE		11/20/2007		7,343.0		7,360.0			
CODELL, ORIGINAL HOLE		1/18/1993		7,344.0		7,354.0			
Other In Hole									
Run Date		Des		OD (in)	Top (ftKB)		Btm (ftKB)		
Logs									
Date		Type			Top, MD (ftKB)		Btm, MD (ftKB)		
1/7/1993		COMPENSATED DENSITY			2,750.0		7,591.0		
1/7/1993		INDUCTION			510.0		7,592.0		
1/15/1993		CBL/CCL/GR			3,500.0		7,517.0		
Plug Back Total Depths									
Date		Type		Com			Depth (ftKB)		
1/15/1993		FILL		DEPTH LOGGER ON CBL			7,522.0		
11/27/2007		FILL		MOST RECENT CLEAN OUT			7,426.0		