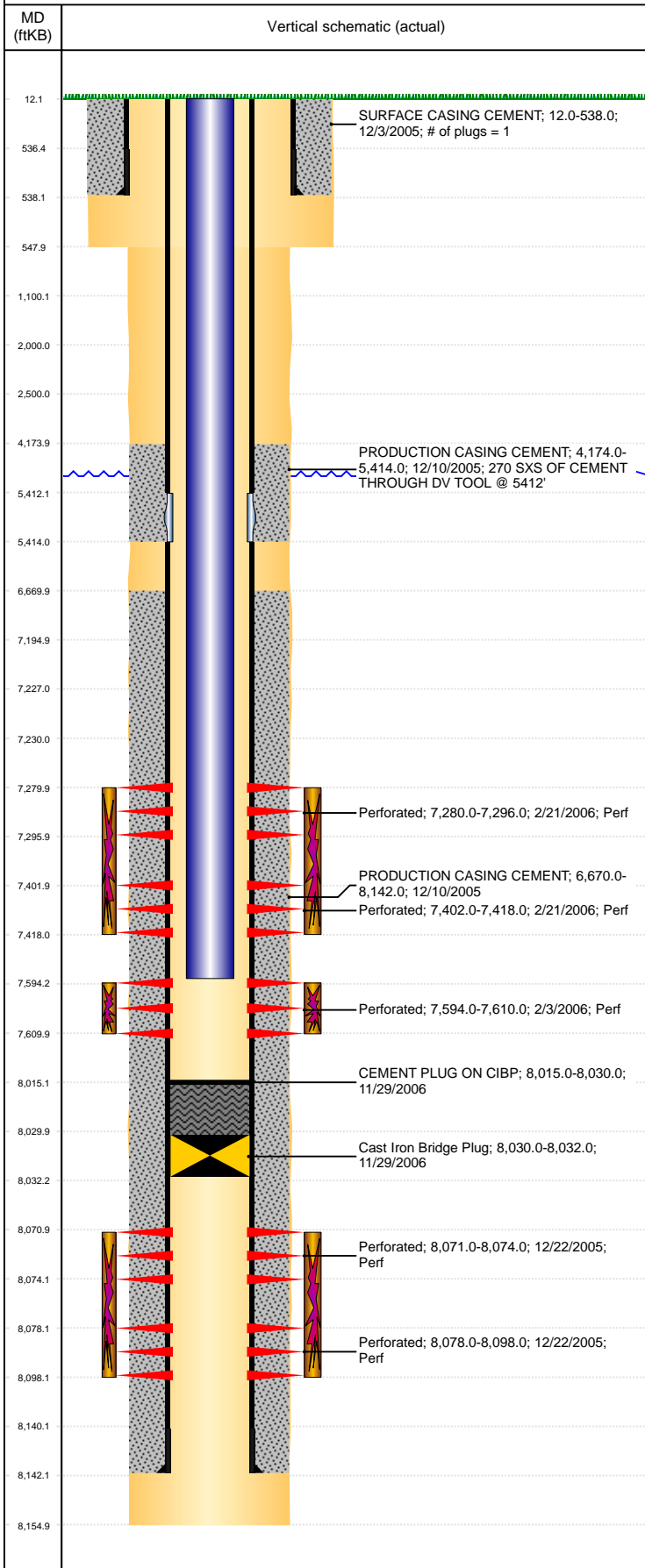


Well Name: STEVE J30-04J

DEVIATED, ORIGINAL HOLE, 6/12/2019 10:35:37 AM



Well Header									
API 05-123-23352		Business Unit DJ BASIN		District 15		Well Config DEVIATED			
KB - GL / MSL (ft... 12.00		Spud Date 12/2/2005		P & A Date		Well Production Status PR			SoRT No
Comment PUSH 1ST CBP'S TO 8150									
Surface Location (Congressional)									
Qtr 3 NW	Qtr 4 NW	Section 30	Twnshp 5	Twnsh... N	Range 66	Rng E/... W	Actual Latitude (°) 40.37263094		Actual Longitude (°) -104.82973228
Wellbore Sections									
Section Des			Size (in)			Act Top, MD (ftKB)		Act Btm, MD (ftKB)	
SURFACE			12 1/4			12		548	
PRODUCTION			7 7/8			548		8,155	
Casing Strings									
Csg Des			Run Date		OD (in)	Wt/Len (lb/ft)	Grade	Top, MD (ftKB)	MD (ftKB)
Surface			12/3/2005		8 5/8	24.00	J-55	12.0	538.0
Production			12/10/2005		4 1/2	11.60	M-80	12.0	8,142.0
Cement									
Des					Start Date		Top (ftKB)		Btm (ftKB)
SURFACE CASING CEMENT					12/3/2005		12.0		538.0
PRODUCTION CASING CEMENT					12/10/2005		4,174.0		5,414.0
PRODUCTION CASING CEMENT					12/10/2005		6,670.0		8,142.0
CEMENT PLUG ON CIBP					11/29/2006		8,015.0		8,030.0
Zone Statuses									
Zone Name		Status Date	Status	Fluid Type	Job			Prod Method	
J SAND		1/9/2006	PR	Gas	DRILLING/COMPLETION - ORIGINAL, 12/2/2005...				
J SAND		11/29/2006	SI	Gas	DRILLING/COMPLETION - ORIGINAL, 12/2/2005...				
NIOBRARA		2/24/2006	PR	Oil	DRILLING/COMPLETION - ORIGINAL, 12/2/2005...				
CODELL		2/24/2006	PR	Oil	DRILLING/COMPLETION - ORIGINAL, 12/2/2005...				
Perforation Data									
Linked Zone			Bnch/Stg	Entered Shot Total	Top (ftKB)		Btm (ftKB)		Date
NIOBRARA, ORIGINAL HOLE			A	96	7,280.00		7,296.00		2/21/2006
NIOBRARA, ORIGINAL HOLE			B	96	7,402.00		7,418.00		2/21/2006
CODELL, ORIGINAL HOLE				64	7,594.00		7,610.00		2/3/2006
J SAND, ORIGINAL HOLE				12	8,071.00		8,074.00		12/22/2005
J SAND, ORIGINAL HOLE				80	8,078.00		8,098.00		12/22/2005
Stimulation Intervals									
Zone				Start Date		Top (ftKB)		Btm (ftKB)	
NIOBRARA, ORIGINAL HOLE				2/22/2006		7,280.0		7,418.0	
CODELL, ORIGINAL HOLE				2/17/2006		7,594.0		7,610.0	
J SAND, ORIGINAL HOLE				1/3/2006		8,071.0		8,098.0	
Other In Hole									
Run Date		Des				OD (in)	Top (ftKB)		Btm (ftKB)
11/29/2006		Cast Iron Bridge Plug				3.99	8,030.0		8,032.0
5/21/2018		Plunger Lift				1 7/8			
Logs									
Date		Type				Top, MD (ftKB)		Btm, MD (ftKB)	
12/9/2005		COMPENSATED DENSITY				3,000.0		8,128.0	
12/9/2005		INDUCTION				538.0		8,148.0	
12/22/2005		CBL/CCL/GR				4,000.0		8,137.0	
12/10/2018		GYRO				12.0		7,500.0	
Plug Back Total Depths									
Date		Type		Com				Depth (ftKB)	
11/29/2006		PLUG REMNANTS		D/O & PUSHED COMPOSITE PLUG; USED TO ISOLATE FOR...				8,150.0	
11/29/2006		PLUG		CIBP @ 8030' W/2 SXS OF CEMENT DUMPED ON TOP				8,015.0	