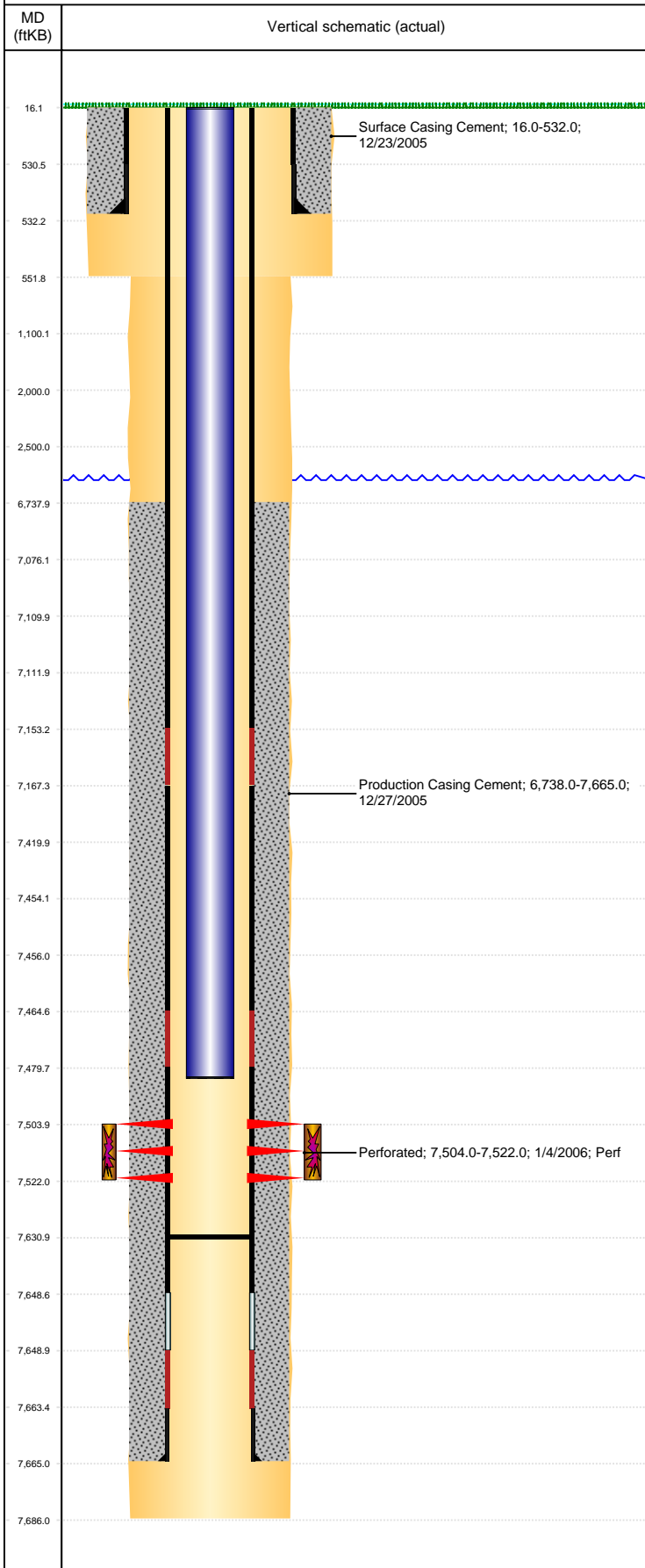


Well Name: KORI J19-14

VERTICAL, ORIGINAL HOLE, 6/11/2019 4:46:55 PM



Well Header										
API 05-123-22719			Business Unit DJ BASIN			District 15		Well Config VERTICAL		
KB - GL / MSL (ft... 16.00		Spud Date 12/23/2005		P & A Date		Well Production Status PR			SoRT No	
Comment STATE SHOWS SHUT IN SINCE SEPT 2016.										
Surface Location (Congressional)										
Qtr 3 SE	Qtr 4 SW	Section 19	Twnshp 5	Twnsh... N	Range 66	Rng E/... W	Actual Latitude (°) 40.37994573	Actual Longitude (°) -104.82429549		
Wellbore Sections										
Section Des			Size (in)			Act Top, MD (ftKB)		Act Btm, MD (ftKB)		
SURFACE			12 1/4			16		552		
PRODUCTION			7 7/8			552		7,686		
Casing Strings										
Csg Des			Run Date		OD (in)	Wt/Len (lb/ft)	Grade	Top, MD (ftKB)	MD (ftKB)	
Surface			12/23/2005		8 5/8	24.00	J-55	16.0	532.0	
Production			12/27/2005		4 1/2	11.60	M-80	16.0	7,665.0	
Cement										
Des					Start Date		Top (ftKB)		Btm (ftKB)	
Surface Casing Cement					12/23/2005		16.0		532.0	
Production Casing Cement					12/27/2005		6,738.0		7,665.0	
Zone Statuses										
Zone Name		Status Date	Status	Fluid Type	Job				Prod Method	
CODELL		1/14/2006	PR	Oil					Flowing	
CODELL		2/2/2010	PR	Water					Flowing	
Perforation Data										
Linked Zone			Bnch/Stg	Entered Shot Total	Top (ftKB)		Btm (ftKB)		Date	
CODELL, ORIGINAL HOLE				72	7,504.00		7,522.00		1/4/2006	
Stimulation Intervals										
Zone					Start Date		Top (ftKB)		Btm (ftKB)	
CODELL, ORIGINAL HOLE					1/12/2006		7,504.0		7,522.0	
Other In Hole										
Run Date		Des				OD (in)	Top (ftKB)	Btm (ftKB)		
Logs										
Date		Type					Top, MD (ftKB)		Btm, MD (ftKB)	
12/27/2005		COMPENSATED DENSITY					2,700.0		7,658.0	
12/27/2005		INDUCTION					544.0		7,678.0	
1/3/2006		CEMENT BOND					6,600.0		7,630.0	
Plug Back Total Depths										
Date		Type			Com				Depth (ftKB)	
12/27/2005		FILL			TAG BOTTOM				7,678.0	
1/3/2006		FILL			DEPTH LOGGER ON CBL				7,631.0	