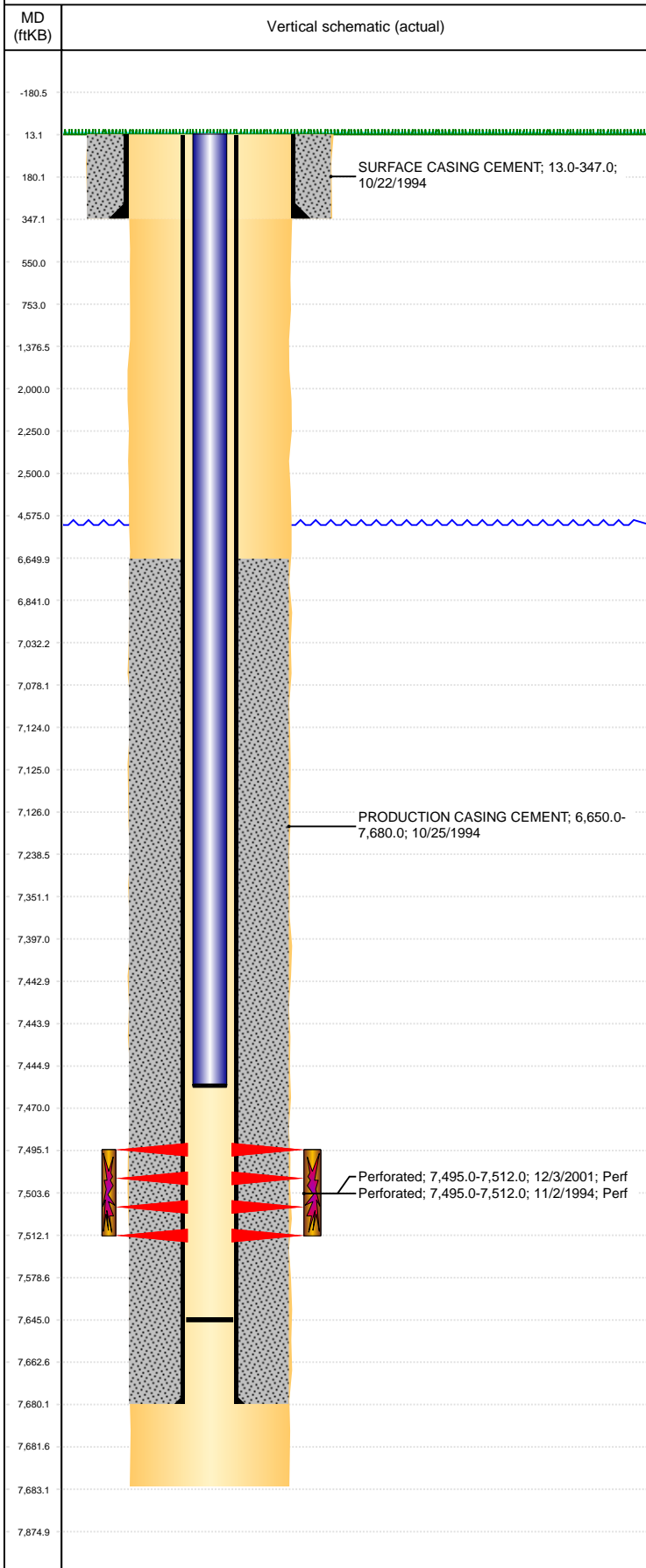


Well Name: KORI J19-09

VERTICAL, ORIGINAL HOLE, 6/11/2019 4:15:41 PM



Well Header									
API 05-123-17993		Business Unit DJ BASIN			District 15		Well Config VERTICAL		
KB - GL / MSL (ft... 13.00		Spud Date 10/21/1994		P & A Date		Well Production Status SI			SoRT No
Comment frac'd into									
Surface Location (Congressional)									
Qtr 3 NE	Qtr 4 SE	Section 19	Twnshp 5	Twnsh... N	Range 66	Rng E/... W	Actual Latitude (°) 40.38322927		Actual Longitude (°) -104.81557942
Wellbore Sections									
Section Des			Size (in)			Act Top, MD (ftKB)		Act Btm, MD (ftKB)	
SURFACE			12 1/4			13		347	
PRODUCTION			7 7/8			347		7,683	
Casing Strings									
Csg Des			Run Date		OD (in)	Wt/Len (lb/ft)	Grade	Top, MD (ftKB)	MD (ftKB)
Surface			10/22/1994		8 5/8	24.00		13.0	347.0
Production			10/25/1994		2 7/8	6.50	N-80	13.0	7,680.0
Cement									
Des					Start Date		Top (ftKB)		Btm (ftKB)
SURFACE CASING CEMENT					10/22/1994		13.0		347.0
PRODUCTION CASING CEMENT					10/25/1994		6,650.0		7,680.0
Zone Statuses									
Zone Name		Status Date	Status	Fluid Type	Job				Prod Method
CODELL		2/2/2010	PR	Water					Flowing
CODELL		9/22/2016	SI						
Perforation Data									
Linked Zone			Bnch/Stg	Entered Shot Total	Top (ftKB)		Btm (ftKB)		Date
CODELL, ORIGINAL HOLE				68	7,495.00		7,512.00		12/3/2001
CODELL, ORIGINAL HOLE				69	7,495.00		7,512.00		11/2/1994
Stimulation Intervals									
Zone				Start Date		Top (ftKB)		Btm (ftKB)	
CODELL, ORIGINAL HOLE				11/2/1994		7,495.0		7,512.0	
CODELL, ORIGINAL HOLE				12/7/2001		7,495.0		7,512.0	
CODELL, ORIGINAL HOLE				3/5/2009		7,495.0		7,512.0	
Other In Hole									
Run Date		Des				OD (in)	Top (ftKB)		Btm (ftKB)
1/19/2016		Plunger Lift				1.265			
Logs									
Date		Type				Top, MD (ftKB)		Btm, MD (ftKB)	
10/24/1994		INDUCTION				0.0		7,700.0	
1/26/2009		CEMENT BOND				6,450.0		7,685.0	
1/26/2009		COMPENSATED DENSITY				4,420.0		7,682.0	
Plug Back Total Depths									
Date		Type		Com				Depth (ftKB)	
2/19/2002		FILL						7,503.0	
3/11/2009		FILL						7,645.0	