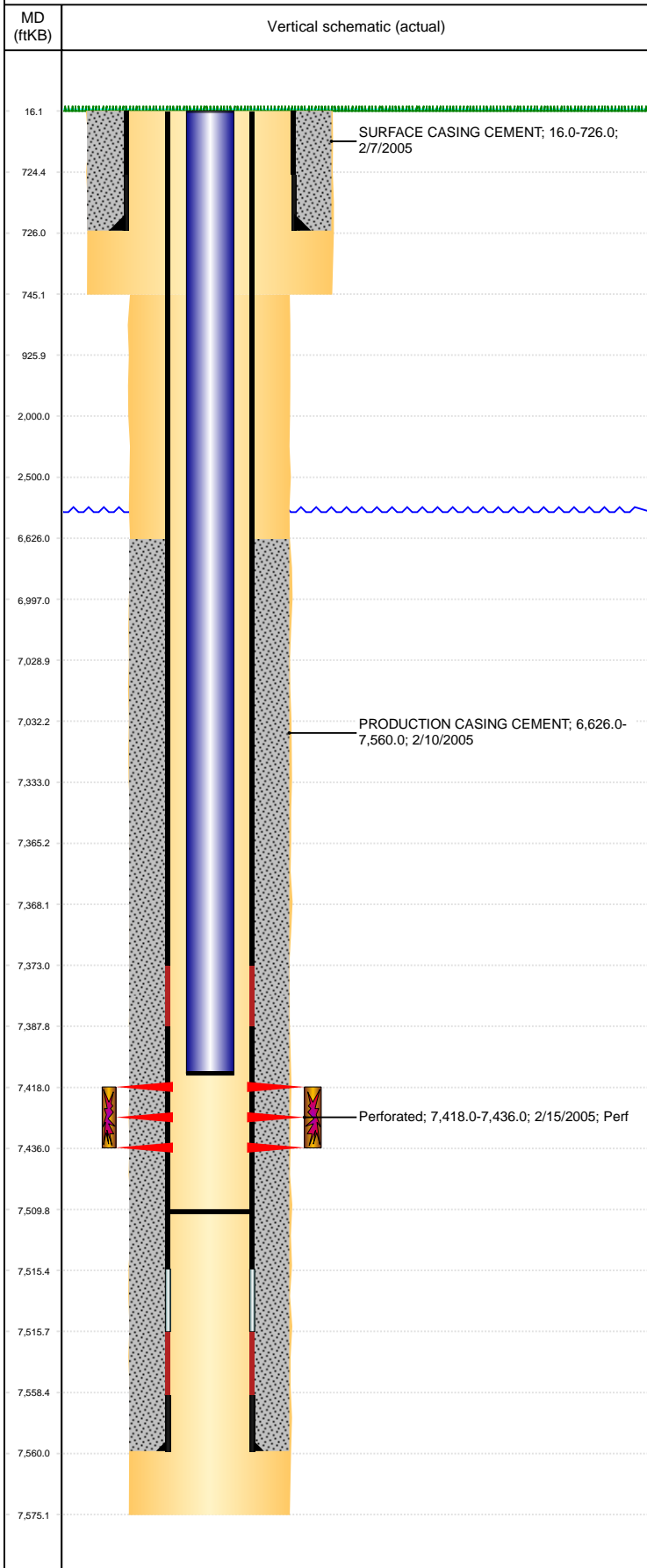


Well Name: BOOTH N25-16

VERTICAL, ORIGINAL HOLE, 6/11/2019 11:35:45 AM



Well Header									
API 05-123-21927		Business Unit DJ BASIN			District 15		Well Config VERTICAL		
KB - GL / MSL (ft... 16.00		Spud Date 2/6/2005		P & A Date		Well Production Status SI			SoRT No
Comment FIELD OPS NOTICE- FLOWLINES ABANDONED PER RULE 1103, RCVD 6/27/17. STATE SHOWS SHUT IN SINCE APR 2017.									
Surface Location (Congressional)									
Qtr 3 SE	Qtr 4 SE	Section 25	Twnshp 5	Twنش... N	Range 67	Rng E/... W	Actual Latitude (°) 40.36507524	Actual Longitude (°) -104.83483687	
Wellbore Sections									
Section Des			Size (in)			Act Top, MD (ftKB)		Act Btm, MD (ftKB)	
SURFACE			12 1/4			16		745	
PRODUCTION			7 7/8			745		7,575	
Casing Strings									
Csg Des			Run Date		OD (in)	Wt/Len (lb/ft)	Grade	Top, MD (ftKB)	MD (ftKB)
Surface			2/7/2005		8 5/8	24.00	J-55	16.0	726.0
Production			2/10/2005		4 1/2	11.60	M-80	16.0	7,560.0
Cement									
Des					Start Date		Top (ftKB)		Btm (ftKB)
SURFACE CASING CEMENT					2/7/2005		16.0		726.0
PRODUCTION CASING CEMENT					2/10/2005		6,626.0		7,560.0
Zone Statuses									
Zone Name		Status Date	Status	Fluid Type	Job			Prod Method	
CODELL		3/11/2005	PR	Oil				Flowing	
CODELL		8/7/2009	PR	Water				Flowing	
Perforation Data									
Linked Zone			Bnch/Stg	Entered Shot Total	Top (ftKB)		Btm (ftKB)		Date
CODELL, ORIGINAL HOLE				72	7,418.00		7,436.00		2/15/2005
Stimulation Intervals									
Zone					Start Date		Top (ftKB)		Btm (ftKB)
CODELL, ORIGINAL HOLE					3/8/2005		7,418.0		7,436.0
Other In Hole									
Run Date		Des				OD (in)	Top (ftKB)		Btm (ftKB)
Logs									
Date		Type					Top, MD (ftKB)		Btm, MD (ftKB)
2/10/2005		COMPENSATED DENSITY					3,000.0		7,555.0
2/10/2005		INDUCTION					726.0		7,575.0
2/14/2005		CEMENT BOND					6,400.0		7,487.0
11/13/2013		GYRO					0.0		7,300.0
Plug Back Total Depths									
Date		Type			Com				Depth (ftKB)
2/14/2005		FILL			DEPTH LOGGER ON CBL				7,490.0
2/14/2006		FILL			CLEAN OUT/PULL STUCK PLUNGER				7,510.0