

T8N, R59W, 6th P.M.

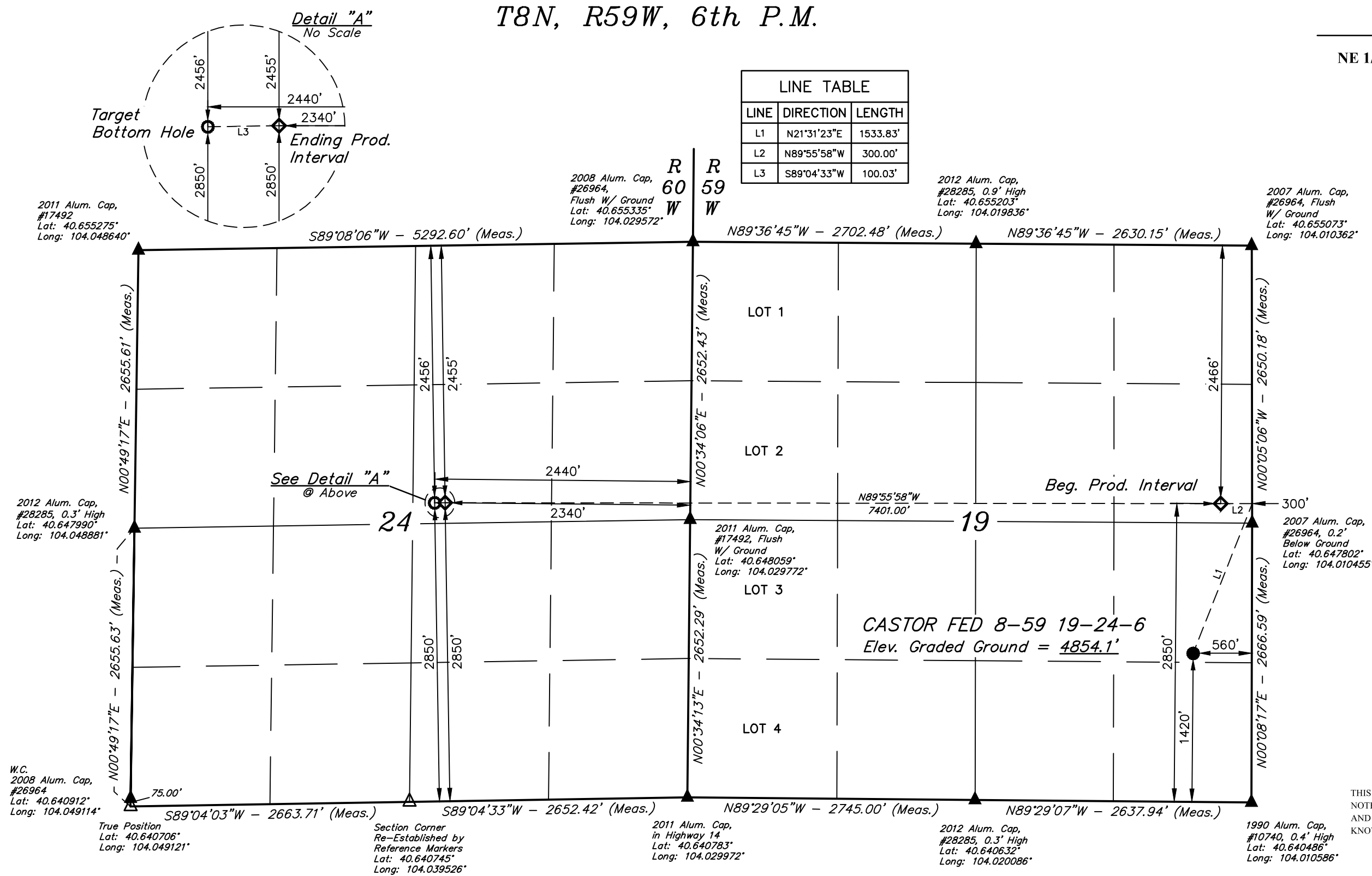
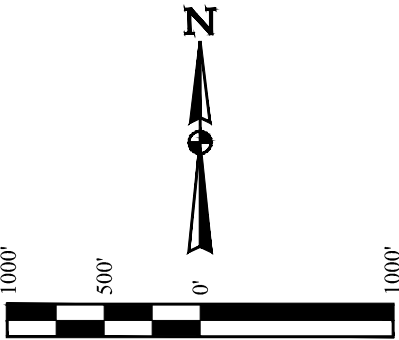
BISON OIL & GAS II

CASTOR FED 8-59 19-24-6
NE 1/4 SE 1/4, SECTION 19, T8N, R59W, 6th P.M.
WELD COUNTY, COLORADO

BASIS OF BEARINGS
TRANSVERSE MERCATOR PROJECTION WITH
A CENTRAL MERIDIAN OF W105°00'00".

BASIS OF ELEVATION
OPUS SOLUTION GENERATED NAVD 88

| LINE TABLE | | |
|------------|-------------|----------|
| LINE | DIRECTION | LENGTH |
| L1 | N21°31'23"E | 1533.83' |
| L2 | N89°55'58"W | 300.00' |
| L3 | S89°04'33"W | 100.03' |



NOTE:
Distances referenced
on plat to section lines
are perpendicular.

LEGEND:

- = PROPOSED WELLHEAD.
- ◆ = PRODUCTION INTERVAL.
- = TARGET BOTTOM HOLE.
- ▲ = SECTION CORNERS LOCATED. (NAD 83)
- △ = SECTION CORNERS RE-ESTABLISHED.
(Not Set on Ground.) (NAD 83)

| SURFACE LOCATION 1420' FSL 560' FEL | BEG. PROD. INTERVAL 2466' FNL 2850' FSL 300' FEL | ENDING PROD. INTERVAL 2455' FNL 2850' FSL 2340' FEL | TARGET BOTTOM HOLE 2456' FNL 2850' FSL 2440' FEL |
|---|---|--|---|
| NAD 83 (SURFACE LOCATION) | NAD 83 (BEG. PROD. INTERVAL) | NAD 83 (ENDING PROD. INTERVAL) | NAD 83 (TARGET BOTTOM HOLE) |
| LATITUDE = 40°38'39.89" (40.644414°) | LATITUDE = 40°38'53.96" (40.648322°) | LATITUDE = 40°38'54.86" (40.648571°) | LATITUDE = 40°38'54.85" (40.648570°) |
| LONGITUDE = 104°00'45.12" (104.012533°) | LONGITUDE = 104°00'41.50" (104.011529°) | LONGITUDE = 104°02'17.48" (104.038189°) | LONGITUDE = 104°02'18.78" (104.038550°) |
| NAD 27 (SURFACE LOCATION) | NAD 27 (BEG. PROD. INTERVAL) | NAD 27 (ENDING PROD. INTERVAL) | NAD 27 (TARGET BOTTOM HOLE) |
| LATITUDE = 40°38'39.94" (40.644427°) | LATITUDE = 40°38'54.00" (40.648335°) | LATITUDE = 40°38'54.90" (40.648584°) | LATITUDE = 40°38'54.90" (40.648583°) |
| LONGITUDE = 104°00'43.30" (104.012028°) | LONGITUDE = 104°00'39.69" (104.011024°) | LONGITUDE = 104°02'15.66" (104.037685°) | LONGITUDE = 104°02'16.96" (104.038045°) |
| STATE PLANE NAD 83 (CO. NORTH) | STATE PLANE NAD 83 (CO. NORTH) | STATE PLANE NAD 83 (CO. NORTH) | STATE PLANE NAD 83 (CO. NORTH) |
| N: 1481064.34' E: 3412761.91' | N: 1482492.52' E: 3413016.63' | N: 1482460.17' E: 3405618.17' | N: 1482458.00' E: 3405518.19' |
| STATE PLANE NAD 27 (CO. NORTH) | STATE PLANE NAD 27 (CO. NORTH) | STATE PLANE NAD 27 (CO. NORTH) | STATE PLANE NAD 27 (CO. NORTH) |
| N: 481062.90' E: 2412912.99' | N: 482491.06' E: 2413167.70' | N: 482458.81' E: 2405769.00' | N: 482456.65' E: 2405669.02' |

CERTIFICATE

THIS IS TO CERTIFY THAT THE ABOVE PLAT WAS PREPARED FROM FIELD
NOTES OF ACTUAL SURVEYS MADE BY ME OR UNDER MY SUPERVISION
AND THAT THE SAME ARE TRUE AND CORRECT TO THE BEST OF MY
KNOWLEDGE AND BELIEF.

REGISTERED LAND SURVEYOR
REGISTRATION NO. 28285
STATE OF COLORADO 04-05-19



UELS, LLC
Corporate Office * 85 South 200 East
Vernal, UT 84078 * (435) 789-1017

| | | | |
|-------------|---------------------|----------|------------|
| SURVEYED BY | RYAN WILLIAMS, K.M. | 04-05-19 | SCALE |
| DRAWN BY | C.IVIE | 04-08-19 | 1" = 1000' |

WELL LOCATION PLAT