

T8N, R59W, 6th P.M.

BISON OIL & GAS II

BIG MOUNTAIN VIPER FED 8-59 16-17-18-1
NW 1/4 SW 1/4, SECTION 16, T8N, R59W, 6th P.M.
WELD COUNTY, COLORADO

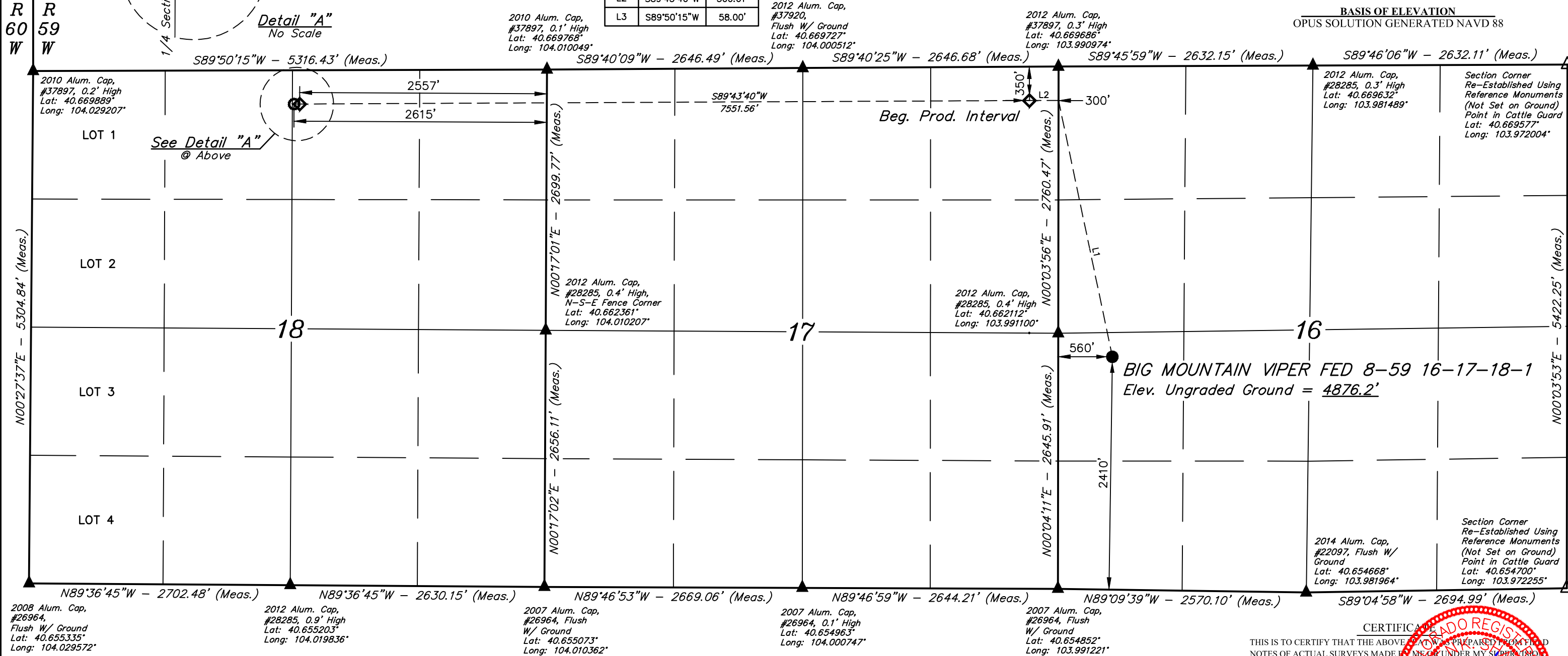
BASIS OF BEARINGS

TRANSVERSE MERCATOR PROJECTION WITH
A CENTRAL MERIDIAN OF W105°00'00".

BASIS OF ELEVATION

OPUS SOLUTION GENERATED NAVD 88

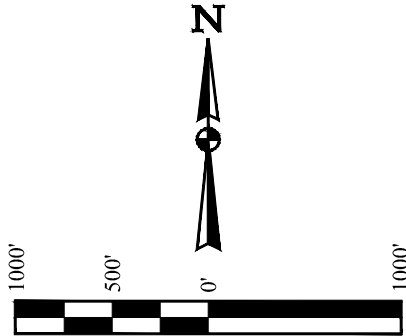
LINE TABLE		
LINE	DIRECTION	LENGTH
L1	N11°51'15"W	2711.94'
L2	S89°43'40"W	300.01'
L3	S89°50'15"W	58.00'



NOTE:
Distances referenced
on plat to section lines
are perpendicular.

LEGEND:

- = PROPOSED WELLHEAD.
- = TARGET BOTTOM HOLE.
- ◇ = PRODUCTION INTERVAL.
- ▲ = SECTION CORNERS LOCATED. (NAD 83)
- △ = SECTION CORNERS RE-ESTABLISHED. (Not Set on Ground.) (NAD 83)



PDOP = 1.3

SURFACE LOCATION 2410' FSL 560' FWL		BEG. PROD. INTERVAL 350' FNL 300' FEL	ENDING PROD. INTERVAL 350' FNL 2557' FEL	TARGET BOTTOM HOLE 350' FNL 2615' FEL
NAD 83 (SURFACE LOCATION)	NAD 83 (BEG. PROD. INTERVAL)	NAD 83 (ENDING PROD. INTERVAL)	NAD 83 (TARGET BOTTOM HOLE)	
LATITUDE = 40°39'41.13" (40.661425°)	LATITUDE = 40°40'07.43" (40.668730°)	LATITUDE = 40°40'07.92" (40.668866°)	LATITUDE = 40°40'07.92" (40.668867°)	
LONGITUDE = 103°59'20.73" (103.989093°)	LONGITUDE = 103°59'31.46" (103.992071°)	LONGITUDE = 104°01'09.42" (104.019284°)	LONGITUDE = 104°01'10.17" (104.019493°)	
NAD 27 (SURFACE LOCATION)	NAD 27 (BEG. PROD. INTERVAL)	NAD 27 (ENDING PROD. INTERVAL)	NAD 27 (TARGET BOTTOM HOLE)	
LATITUDE = 40°39'41.17" (40.661437°)	LATITUDE = 40°40'07.47" (40.668743°)	LATITUDE = 40°40'07.96" (40.668879°)	LATITUDE = 40°40'07.97" (40.668880°)	
LONGITUDE = 103°59'18.92" (103.988588°)	LONGITUDE = 103°59'29.64" (103.991567°)	LONGITUDE = 104°01'07.60" (104.018779°)	LONGITUDE = 104°01'08.36" (104.018988°)	
STATE PLANE NAD 83 (CO. NORTH)	STATE PLANE NAD 83 (CO. NORTH)	STATE PLANE NAD 83 (CO. NORTH)	STATE PLANE NAD 83 (CO. NORTH)	
N: 1487370.82' E: 3419160.24'	N: 1490017.81' E: 3418288.76'	N: 1489940.10' E: 3410740.11'	N: 1489939.61' E: 3410682.13'	
STATE PLANE NAD 27 (CO. NORTH)	STATE PLANE NAD 27 (CO. NORTH)	STATE PLANE NAD 27 (CO. NORTH)	STATE PLANE NAD 27 (CO. NORTH)	
N: 487369.28' E: 2419311.41'	N: 490016.21' E: 2418439.86'	N: 489938.54' E: 2410891.00'	N: 489938.05' E: 2410833.01'	

REV: 1 04-17-19 C.IVIE (NAME CHANGE)

CERTIFICATE
THIS IS TO CERTIFY THAT THE ABOVE PLAT WAS PREPARED FROM FIELD
NOTES OF ACTUAL SURVEYS MADE BY ME OR UNDER MY SUPERVISION
AND THAT THE SAME ARE TRUE AND CORRECT TO THE BEST OF MY
KNOWLEDGE AND BELIEF.

REGISTERED LAND SURVEYOR
REGISTRATION NO. 28285
STATE OF COLORADO
04-17-19

UINTAH
ENGINEERING & LAND SURVEYING

UELS, LLC
Corporate Office * 85 South 200 East
Vernal, UT 84078 * (435) 789-1017

SURVEYED BY	CHAD MEIERS, O.R.	03-15-19	SCALE
DRAWN BY	K.B.	03-19-19	1" = 1000'

WELL LOCATION PLAT