



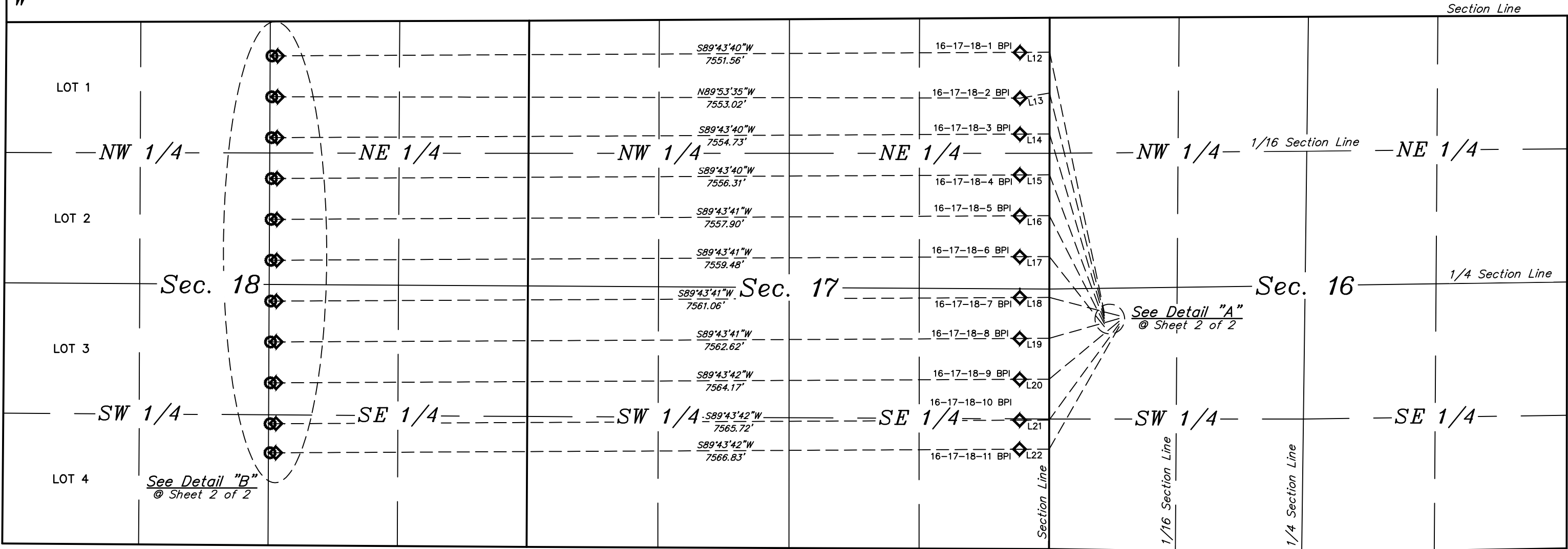
LEGEND:

- = SURFACE LOCATION.
- = TARGET BOTTOM HOLE.
- ◇ = PRODUCTION INTERVAL.
- SL = SURFACE LOCATION.
- TBH = TARGET BOTTOM HOLE.
- BPI = BEG. PROD. INTERVAL.
- EPI = ENDING PROD. INTERVAL.

R 60 W
R 59 W

LINE TABLE		
LINE	DIRECTION	LENGTH
L12	S89°43'40"W	300.01'
L13	S80°16'29"W	304.43'
L14	S89°43'40"W	300.01'
L15	S89°43'40"W	300.01'
L16	S89°43'41"W	300.01'
L17	S89°43'41"W	300.01'

LINE TABLE		
LINE	DIRECTION	LENGTH
L18	S89°43'41"W	300.01'
L19	S89°43'41"W	300.01'
L20	S89°43'42"W	300.01'
L21	S89°43'42"W	300.01'
L22	S89°43'42"W	300.01'



Sheet 1 of 2

REV:3 04-30-19 M.D. (BPI CHANGE)

BISON OIL & GAS II

BIG MOUNTAIN VIPER 8-59 16 PAD
NW 1/4 SW 1/4, SECTION 16, T8N, R59W, 6th P.M.
WELD COUNTY, COLORADO

SURVEYED BY	CHAD MEIERS, O.R.	03-15-19	SCALE
DRAWN BY	K.B.	03-19-19	1" = 1000'
MULTI-Well PLAN			FIGURE #5



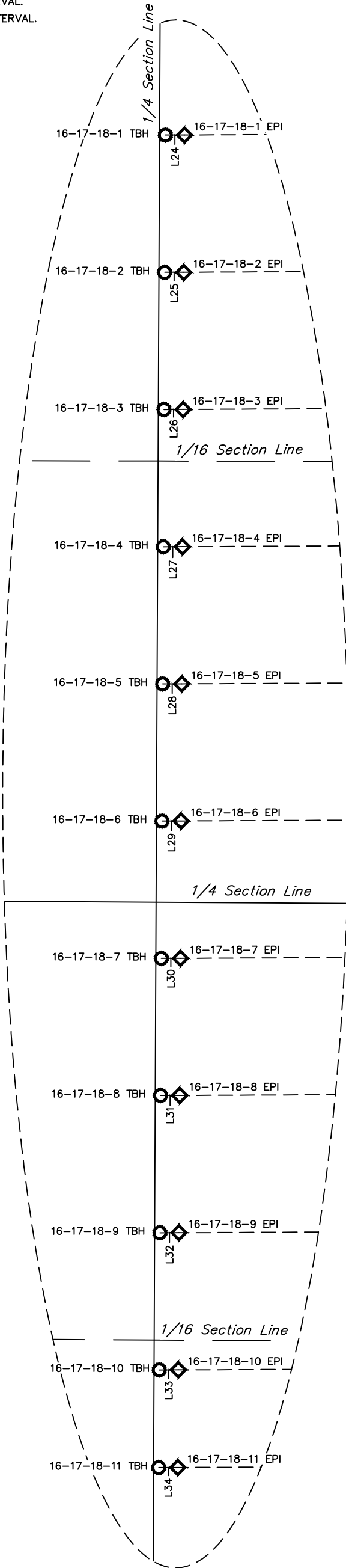
UELS, LLC
Corporate Office * 85 South 200 East
Vernal, UT 84078 * (435) 789-1017



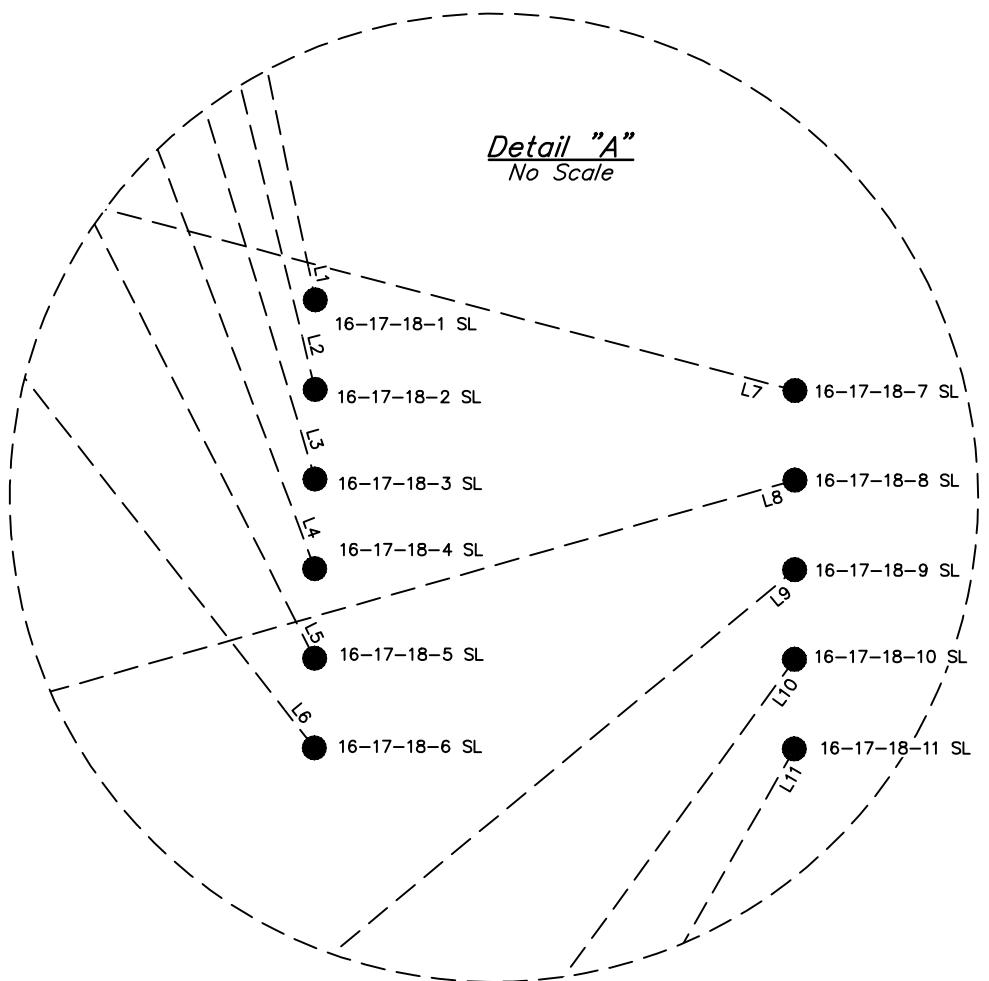
LEGEND:

- = SURFACE LOCATION.
- = TARGET BOTTOM HOLE.
- ◇ = PRODUCTION INTERVAL.
- SL = SURFACE LOCATION.
- TBH = TARGET BOTTOM HOLE.
- BPI = BEG. PROD. INTERVAL.
- EPI = ENDING PROD. INTERVAL.

Detail "B"
No Scale



Detail "A"
No Scale



LINE TABLE		
LINE	DIRECTION	LENGTH
L1	N11°51'15"W	2711.94'
L2	N13°49'17"W	2333.66'
L3	N16°32'42"W	1959.20'
L4	N20°32'28"W	1591.24'
L5	N26°53'07"W	1235.61'
L6	N38°03'51"W	906.94'
L7	N75°17'25"W	733.94'
L8	S74°09'07"W	738.40'
L9	S50°19'16"W	923.53'
L10	S36°02'06"W	1209.00'
L11	S29°44'06"W	1434.56'

LINE TABLE		
LINE	DIRECTION	LENGTH
L24	S89°50'15"W	58.00'
L25	S89°50'15"W	58.00'
L26	S89°50'15"W	58.00'
L27	S89°50'15"W	58.00'
L28	S89°50'15"W	58.00'
L29	S89°50'15"W	58.00'
L30	S89°50'15"W	58.00'
L31	S89°50'15"W	58.00'
L32	S89°50'15"W	58.00'
L33	S89°50'15"W	58.00'
L34	S89°50'15"W	58.00'

BISON OIL & GAS II

BIG MOUNTAIN VIPER 8-59 16 PAD
NW 1/4 SW 1/4, SECTION 16, T8N, R59W, 6th P.M.
WELD COUNTY, COLORADO

SURVEYED BY	CHAD MEIERS, O.R.	03-15-19	SCALE
DRAWN BY	K.B.	03-19-19	1" = 1000'
MULTI-WELL PLAN			FIGURE #5



UELS, LLC
Corporate Office * 85 South 200 East
Vernal, UT 84078 * (435) 789-1017