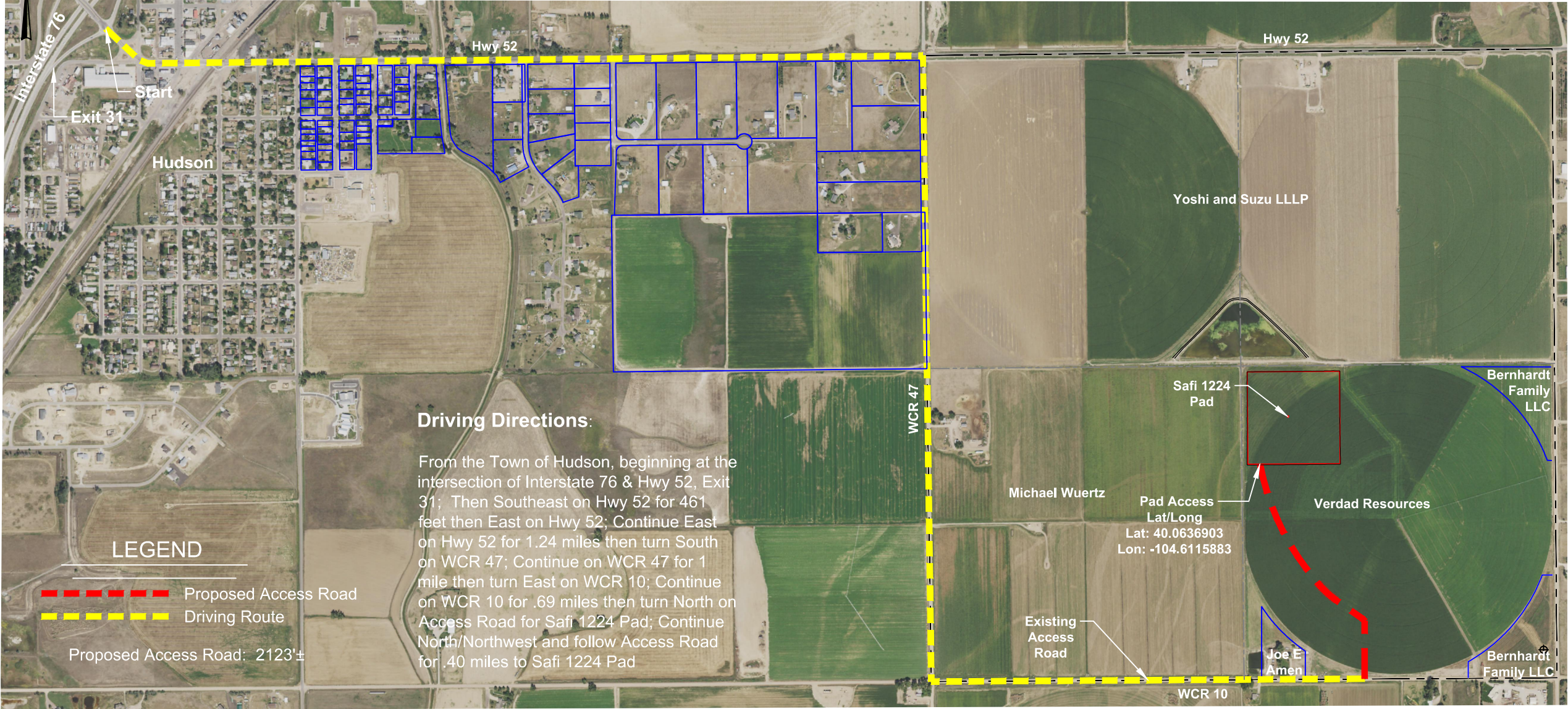


**ACCESS ROAD MAP**  
NW 1/4 SE 1/4 SECTION 12  
T1N R65W 6TH PM  
WELD COUNTY, COLORADO



**Driving Directions:**

From the Town of Hudson, beginning at the intersection of Interstate 76 & Hwy 52, Exit 31; Then Southeast on Hwy 52 for 461 feet then East on Hwy 52; Continue East on Hwy 52 for 1.24 miles then turn South on WCR 47; Continue on WCR 47 for 1 mile then turn East on WCR 10; Continue on WCR 10 for .69 miles then turn North on Access Road for Safi 1224 Pad; Continue North/Northwest and follow Access Road for .40 miles to Safi 1224 Pad

**LEGEND**

- Proposed Access Road
  - Driving Route
- Proposed Access Road: 2123±

VERDAD RESOURCES SAFI 1224 JOB NO. 125170	May 21, 2019	REVISION:	
	1 OF 1	INT	DATE
	F2A_SAFI_1224_ACCESS_DRAWING_REV3		

NOTE:  
ALL PRODUCTION FACILITIES WILL BE ON PAD

