

HALLIBURTON

iCem[®] Service

EXTRACTION OIL & GAS

Ft. Lupton District, CO

For: TODD

Date: Monday, March 25, 2019

COYOTE TRAILS

WELD

EXTRACTION COYOTE TRAILS 33W-15-8N SURFACE

Job Date: Monday, March 25, 2019

Sincerely,

SAM CARPENTER

Legal Notice

Disclaimer:

All information in this report is provided subject to the terms and conditions which govern the services provided by Halliburton. Halliburton personnel use their best efforts in gathering information and their best judgment in interpreting it, but any interpretation, research, analysis or recommendation furnished by Halliburton are opinions based upon inferences from measurements and empirical relationships and assumptions, which inferences and empirical relationships and assumptions are not infallible, and with respect to which professionals in the industry may differ. iCem 3D Displacement results are used to understand how fluids intermix during a cement job. Simulation and 3D displacement results are not intended as and should not be used as a replacement for bond logs in determining top of cement. Current 3D model calculations are known to model more volume than the input volume for standard cases due to known calculation improvements required. For rotational cases, the modeled volume will be impacted by the same calculations impacting the standard cases, as well as additional constraints imposed to make the calculation time required operationally feasible. Therefore, until further notice, 3D displacement results should not be used for replacement of a bond log, or used as an identifier of top of cement. HALLIBURTON IS UNABLE TO GUARANTEE THE ACCURACY OF ANY CHART INTERPRETATION, RESEARCH ANALYSIS, OR JOB RECOMMENDATION and any interpretation or recommendation is not for use of or reliance upon by any third party. The customer has full responsibility for any of its decisions which are based on the information provided in this report.

Table of Contents

1.0 Real-Time Job Summary 6

 1.1 Job Event Log6

2.0 Attachments..... 8

 2.1 EXTRACTION COYOTE TRAILS 33W-15-8N SURFACE-Custom Results.png8

 2.2 EXTRACTION COYOTE TRAILS 33W-15-8N SURFACE-Custom Results (1).png9

3.0 Custom Graphs..... 10

 3.1 Custom Graph10

The Road to Excellence Starts with Safety

Sold To #: 369404		Ship To #: 3912776		Quote #:		Sales Order #: 0905578614				
Customer: EXTRACTION OIL & GAS -						Customer Rep: TODD				
Well Name: COYOTE TRAILS			Well #: 33W-15-8N			API/UWI #: 05-123-48250-00				
Field: WATTENBERG		City (SAP): ERIE		County/Parish: WELD		State: COLORADO				
Legal Description: SW SE-28-1N-68W-1198FSL-2283FEL										
Contractor: ENSIGN DRLG				Rig/Platform Name/Num: ENSIGN 147						
Job BOM: 7521 7521										
Well Type: HORIZONTAL OIL										
Sales Person: HALAMERICA\HX38199				Srv Supervisor: Lance Carpenter						
Job										
Formation Name										
Formation Depth (MD)		Top		Bottom						
Form Type				BHST						
Job depth MD		1624		Job Depth TVD		1624				
Water Depth				Wk Ht Above Floor						
Perforation Depth (MD)		From		To						
Well Data										
Description	New / Used	Size 9 5/8	ID 8.921	Weight 26	Thread	Grade	Top MD	Bottom 1624MD	Top TVD	Bottom 1624TVD
Fluid Data										
Stage/Plug #: 1										
Fluid #	Stage Type	Fluid Name	Qty	Qty UoM	Mixing Density lbm/gal	Yield ft3/sack	Mix Fluid Gal	Rate bbl/min	Total Mix Fluid Gal	
1	Red Dye Spacer	Red Dye Spacer	10	bbl	8.33					
Fluid #	Stage Type	Fluid Name	Qty	Qty UoM	Mixing Density lbm/gal	Yield ft3/sack	Mix Fluid Gal	Rate bbl/min	Total Mix Fluid Gal	
2	SwiftCem	SWIFTCM (TM) SYSTEM	575	sack	13.5	1.74	9.2	5	9.2	
9.20 Gal		FRESH WATER								
Fluid #	Stage Type	Fluid Name	Qty	Qty UoM	Mixing Density lbm/gal	Yield ft3/sack	Mix Fluid Gal	Rate bbl/min	Total Mix Fluid Gal	
3	Fresh Water	Fresh Water	122	bbl	8.33					

Cement Left In Pipe	Amount	43.4'	Reason		Shoe Joint
Mix Water:	7 ##	Mix Water Chloride:	200 ppm	Mix Water Temperature:	51°F °C
Cement Temperature:	## °F °C	Plug Displaced by:	8.33 lb/gal	Disp. Temperature:	## °F °C
Plug Bumped?	Yes	Bump Pressure:	460psi	Floats Held?	Yes
Cement Returns:	25 bbl	Returns Density:	## lb/gal kg/m3	Returns Temperature:	## °F °C
Comment JOB WENT VERY GOOD, CEMENT WEIGHED AT 13.5PPG THROUGHT OUT PUMPING STAGE. GOOD RETURNS DURING CEMENT AND DISPLACEMENT. TRACES OF OF RED DYE BACK AT 75 BBLS AWAY AND GOOD CEMENT BACK AT 95 BBLS AWAY. BUMPED PLUG AT 3BPM AT 122BBLS AWAY, FINAL CIRCULATING PRESSURE 460PSI BROUGHT TO 900PSI FLOATS HELD AND GOT 3/4 BBL BACK.					

1.0 Real-Time Job Summary

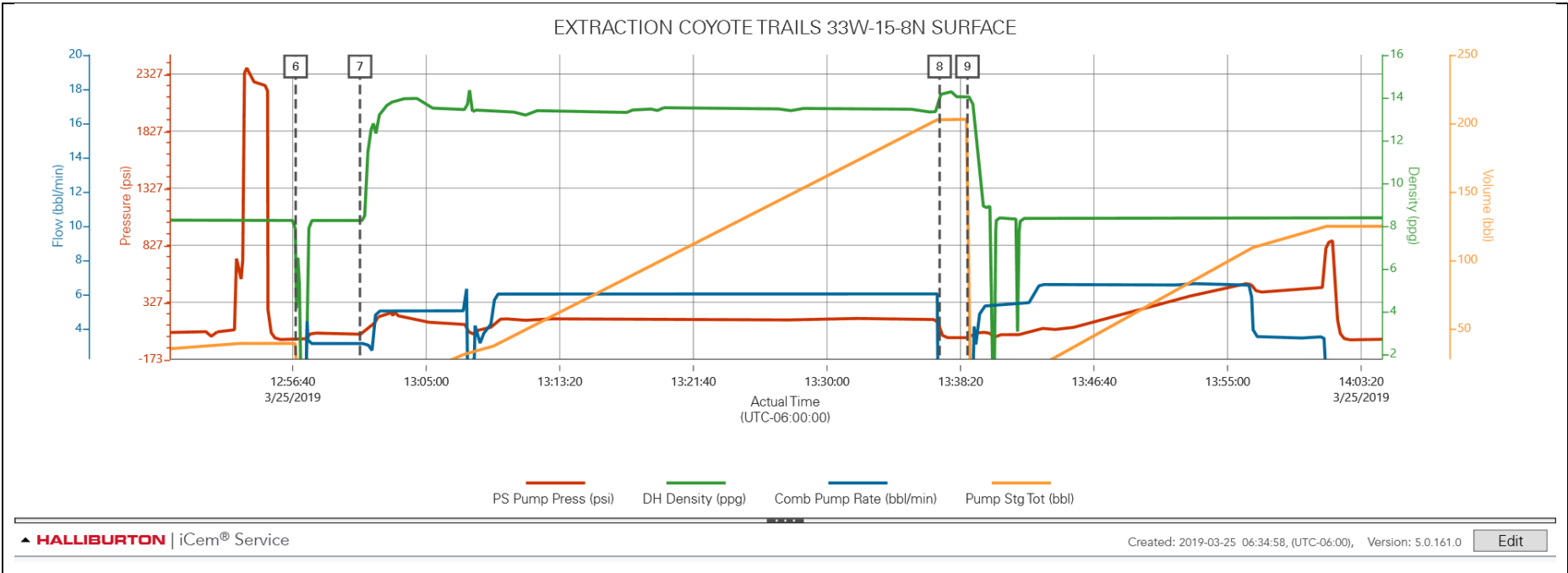
1.1 Job Event Log

Type	Seq. No.	Activity	Graph Label	Date	Time	Source	PS Pump Press (psi)	DH Density (ppg)	Comb Pump Rate (bbl/min)	Pump Stg Tot (bbl)	Comments
Event	1	Call Out	Call Out	3/24/2019	22:00:00	USER					CREW CALLED OUT FOR ON LOCATION AT 0300
Event	2	Crew Leave Yard	Crew Leave Yard	3/25/2019	02:00:00	USER					CHECKED THAT ALL CEMENT WAS LOADED CORRECTLY AND EQUIPMENT WAS RUNNING GOOD. HAD PRE CONVOY SAFETY MEETING WITH CREW AND DISCUSSED ROUTE TO LOCATION.
Event	3	Arrive At Loc	Arrive At Loc	3/25/2019	03:00:00	USER					ARRIVED AT LOCATION RIG WAS STILL DRILLING
Event	4	Start Job	Start Job	3/25/2019	12:20:07	COM6	6.00	8.26	0.00	29.70	SENT START JOB.
Event	5	Test Lines	Test Lines	3/25/2019	12:48:00	COM6	-8.00	8.25	0.00	34.30	TESTED LINES TO 2500PSI
Event	6	Pump Spacer 1	Pump Spacer 1	3/25/2019	12:56:51	COM6	-4.00	7.05	0.00	0.00	PUMPED 10BBLS OF RED DYE.
Event	7	Pump Cement	Pump Cement	3/25/2019	13:00:52	COM6	46.00	8.21	3.10	10.90	PUMPED 178 BBLS OF SWIFTCM 13.5PPG 1.74 YIELD 9.2 GAL 575 SKS
Event	8	Drop Top Plug	Drop Top Plug	3/25/2019	13:37:02	COM6	79.00	14.09	0.00	202.60	DROPPED TOP PLUG WITH COMPANY ON RIG FLOOR.
Event	9	Pump Displacement	Pump Displacement	3/25/2019	13:38:46	COM6	16.00	14.02	0.00	0.00	PUMPED 122 BBLS OF DISPLACEMENT WATER SLOWED RATE TO 3BPM AT 100BBLS AWAY. GOT RED DYE BACK AT 75BBLS AWAY AND CEMENT BACK AT 95BBLS AWAY.

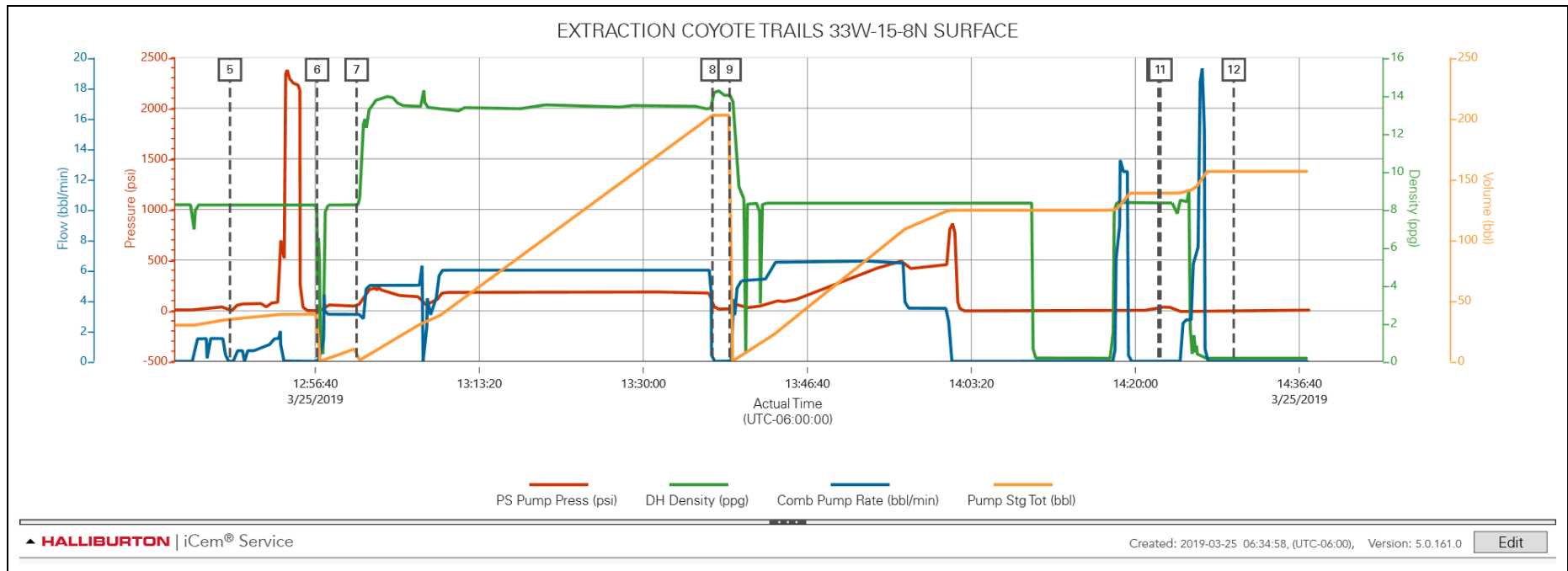
Event	10	Bump Plug	Bump Plug	3/25/2019	14:22:21	COM6	29.00	8.36	0.00	138.50	BUMPED PLUG AT 122BBLs AWAY AT 3BPM TO 500PSI OVER AND CHECKED FLOATS. GOT 1 BBL BACK.
Event	11	End Job	End Job	3/25/2019	14:22:33	COM6	35.00	8.36	0.00	138.50	SENT END JOB.
Event	12	Pre-Rig Down Safety Meeting	Pre-Rig Down Safety Meeting	3/25/2019	14:30:00	USER	7.00	0.16	0.00	156.30	HAD RIG DOWN SAFETY MEETING WITH CREW AND DISCUSSED SAFE LIFTING AND GOOD COMMUNICATION RIGGING DOWN FLOOR.
Event	13	Crew Leave Location	Crew Leave Location	3/25/2019	15:00:00	USER					CREW LEFT LOCATION

2.0 Attachments

2.1 EXTRACTION COYOTE TRAILS 33W-15-8N SURFACE-Custom Results.png



2.2 EXTRACTION COYOTE TRAILS 33W-15-8N SURFACE-Custom Results (1).png



3.0 Custom Graphs

3.1 Custom Graph

