

# HALLIBURTON

iCem<sup>®</sup> Service

## **EXTRACTION OIL & GAS**

Ft. Lupton District, COLORADO

**For: TODD**

Date: Tuesday, March 26, 2019

## **COYOTE TRAILS**

WELD

EXTRACTION COYOTE TRAILS 33W-15-6C SURFACE

Job Date: Tuesday, March 26, 2019

Sincerely,

**MITCHELL CAMPER**

## Legal Notice

---

### Disclaimer:

All information in this report is provided subject to the terms and conditions which govern the services provided by Halliburton. Halliburton personnel use their best efforts in gathering information and their best judgment in interpreting it, but any interpretation, research, analysis or recommendation furnished by Halliburton are opinions based upon inferences from measurements and empirical relationships and assumptions, which inferences and empirical relationships and assumptions are not infallible, and with respect to which professionals in the industry may differ. iCem 3D Displacement results are used to understand how fluids intermix during a cement job. Simulation and 3D displacement results are not intended as and should not be used as a replacement for bond logs in determining top of cement. Current 3D model calculations are known to model more volume than the input volume for standard cases due to known calculation improvements required. For rotational cases, the modeled volume will be impacted by the same calculations impacting the standard cases, as well as additional constraints imposed to make the calculation time required operationally feasible. Therefore, until further notice, 3D displacement results should not be used for replacement of a bond log, or used as an identifier of top of cement. HALLIBURTON IS UNABLE TO GUARANTEE THE ACCURACY OF ANY CHART INTERPRETATION, RESEARCH ANALYSIS, OR JOB RECOMMENDATION and any interpretation or recommendation is not for use of or reliance upon by any third party. The customer has full responsibility for any of its decisions which are based on the information provided in this report.

Table of Contents

---

1.0 Real-Time Job Summary ..... 6

    1.1 Job Event Log .....6

2.0 Attachments..... 8

    2.1 EXTRACTION COYOTE TRAILS 33W-15-6C SURFACE.png.....8

3.0 Custom Graphs..... 9

    3.1 Custom Graph.....9

*The Road to Excellence Starts with Safety*

<b>Sold To #:</b> 369404		<b>Ship To #:</b> 3912708		<b>Quote #:</b>		<b>Sales Order #:</b> 0905578234					
<b>Customer:</b> EXTRACTION OIL & GAS -				<b>Customer Rep:</b> TODD							
<b>Well Name:</b> COYOTE TRAILS			<b>Well #:</b> 33W-15-6C			<b>API/UWI #:</b> 05-123-48255-00					
<b>Field:</b> WATTENBERG		<b>City (SAP):</b> ERIE		<b>County/Parish:</b> WELD			<b>State:</b> COLORADO				
<b>Legal Description:</b> SW SE-28-1N-68W-1199FSL-2319FEL											
<b>Contractor:</b> ENSIGN DRLG				<b>Rig/Platform Name/Num:</b> ENSIGN 147							
<b>Job BOM:</b> 7521 7521											
<b>Well Type:</b> HORIZONTAL OIL											
<b>Sales Person:</b> HALAMERICA\HX38199				<b>Srv Supervisor:</b> Lance Carpenter							
<b>Job</b>											
<b>Formation Name</b>											
<b>Formation Depth (MD)</b>		<b>Top</b>				<b>Bottom</b>					
<b>Form Type</b>				<b>BHST</b>							
<b>Job depth MD</b>		1629		<b>Job Depth TVD</b>		1629					
<b>Water Depth</b>				<b>Wk Ht Above Floor</b>		4FT					
<b>Perforation Depth (MD)</b>		<b>From</b>				<b>To</b>					
<b>Well Data</b>											
<b>Description</b>	<b>New / Used</b>	<b>Size</b> 9 5/8	<b>ID</b> 8.921	<b>Weight</b> 36	<b>Thread</b>	<b>Grade</b>	<b>Top MD</b>	<b>Bottom</b> 1629MD	<b>Top</b> TVD	<b>Bottom</b> 1629TVD	
<b>Fluid Data</b>											
<b>Stage/Plug #: 1</b>											
<b>Fluid #</b>	<b>Stage Type</b>	<b>Fluid Name</b>			<b>Qty</b>	<b>Qty UoM</b>	<b>Mixing Density</b> lbm/gal	<b>Yield</b> ft3/sack	<b>Mix Fluid</b> Gal	<b>Rate</b> bbl/min	<b>Total Mix Fluid</b> Gal
1	Red Dye Spacer	Red Dye Spacer			10	bbl	8.33				
<b>Fluid #</b>	<b>Stage Type</b>	<b>Fluid Name</b>			<b>Qty</b>	<b>Qty UoM</b>	<b>Mixing Density</b> lbm/gal	<b>Yield</b> ft3/sack	<b>Mix Fluid</b> Gal	<b>Rate</b> bbl/min	<b>Total Mix Fluid</b> Gal
2	SwiftCem	SWIFTCM (TM) SYSTEM			575	sack	13.5	1.74	9.2	5	9.2
9.20 Gal		<b>FRESH WATER</b>									
<b>Fluid #</b>	<b>Stage Type</b>	<b>Fluid Name</b>			<b>Qty</b>	<b>Qty UoM</b>	<b>Mixing Density</b> lbm/gal	<b>Yield</b> ft3/sack	<b>Mix Fluid</b> Gal	<b>Rate</b> bbl/min	<b>Total Mix Fluid</b> Gal
3	Fresh Water	Fresh Water			122.5	bbl	8.33				

Cement Left In Pipe	Amount	43.1	Reason	Shoe Joint	
Mix Water:	7 ##	Mix Water Chloride:	200 ppm	Mix Water Temperature:	52 °F °C
Cement Temperature:	## °F °C	Plug Displaced by:	8.34/ PPG	Disp. Temperature:	## °F °C
Plug Bumped?	Ye	Bump Pressure:	460 psi	Floats Held?	Yes
Cement Returns:	32 bbl	Returns Density:	## lb/gal kg/m3	Returns Temperature:	## °F °C
<b>Comment</b>  JOB WENT WELL HAD GOOD RETURNS THROUGH OUT JOB, CEMENT WEIGHED ON SCALES AND PUMPED FULL VOLUME. DISPLACEMENT PUMPED AT CALCULATED SPACER RETURNED AT 75BBLS AWAY AND CEMENT RETURNED AT 90BBLS AWAY. BUMPED PUG AT 3BPM FINAL CIRCULATING PRESSURE 460PSI BROUGHT 500 OVER CHECKED FLOATS AND .5 BBLS BACK. FLOATS HELD.					

## 1.0 Real-Time Job Summary

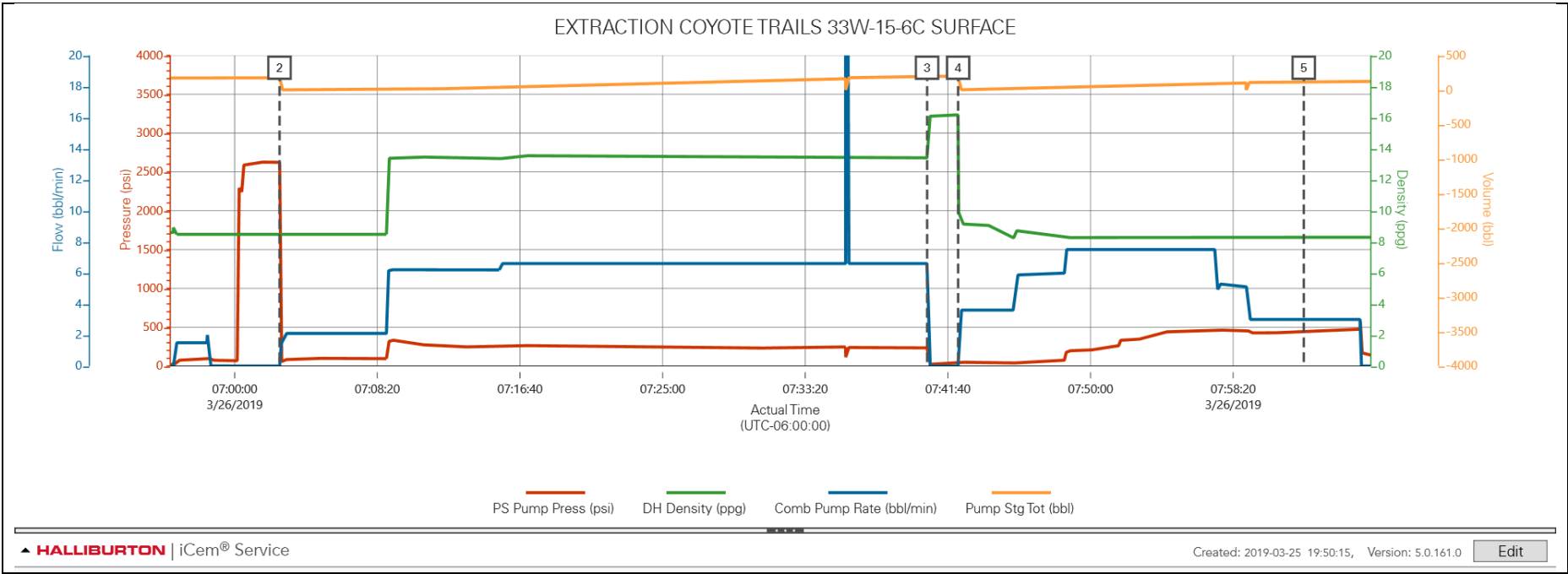
## 1.1 Job Event Log

Type	Seq. No.	Activity	Graph Label	Date	Time	Source	PS Pump Press (psi)	DH Density (ppg)	Comb Pump Rate (bbl/min)	Pump Stg Tot (bbl)	Comments
Event	1	Safety Meeting - Pre Rig-Down	Arrive At Loc	3/25/2019	22:00:00	USER					CREW ARRIVED AT LOCATION RIG WAS STILL DRILLING.
Event	2	Pre-Rig Up Safety Meeting	Pre-Rig Up Safety Meeting	3/25/2019	23:30:00	USER					HAD PRE RIG UP SAFETY MEETING CREW AND SPOTTED IN TRUCKS AND RIGGED UP IRON TO STAND PIPE.
Event	3	Casing on Bottom	Casing on Bottom	3/26/2019	06:40:00	USER					RIG HAD CASING ON BOTTOM
Event	4	Comment	Comment	3/26/2019	06:56:25	USER	0.00	8.49	0.00	171.30	FILLED LINES WITH 3 BBLS WATER
Event	5	Pressure Test	Pressure Test	3/26/2019	07:00:12	USER	2313.00	8.50	0.00	175.00	PRESSURED TESTED LINES TO 2500PSI
Event	6	Pump Spacer 1	Pump Spacer 1	3/26/2019	07:02:51	USER	66.00	8.48	1.70	0.60	PUMPED 10 BBLS OF SPACER RED DYE
Event	7	Pump Lead Cement	Pump Lead Cement	3/26/2019	07:08:46	USER					PUMPED 178 BBLS OF SWIFTCM 13.5 PPG 1.74 YIELD 9.2 GAL
Event	8	Drop Plug	Drop Plug	3/26/2019	07:42:11	USER					DROPPED PLUG WITH COMPANY MAN ON RIG FLOOR.
Event	9	Pump Displacement - Start	Pump Displacement - Start	3/26/2019	07:42:41	USER					PUMPED 122 BBLS OF DISPLACEMENT WATER HAD GOOD RETURNS THROUGHT OUT CAUGHT CEMENT RIGHT AWAY GOING DOWN HOLE.

							SPACER RETURNED AT 75BBLs AWAY AND CEMENT AT 90 BBLs AWAY.
Event	10	Bump Plug	Bump Plug	3/26/2019	08:05:43	USER	BUMPED PLUG AT 3BPM FINAL CIRCULATING PRESSURE WAS 460 PSI
Event	11	Check Floats	Check Floats	3/26/2019	08:06:00	USER	CHECKED FLOATS, FLOATS HELD AND GOT .5 BBLs BACK
Event	12	End Job	End Job	3/26/2019	08:08:33	USER	END JOB
Event	13	Safety Meeting - Pre Rig-Down	Safety Meeting - Pre Rig-Down	3/26/2019	08:08:44	USER	HAD PRE RIG DOWN SAFETY MEETING WITH CREW AND DISCUSSED TEAM CARRY AND PINCH POINTS. RIGGED DOWN FLOOR AND IRON.
Event	14	Depart Location	Depart Location	3/26/2019	09:00:00	USER	CREW IS RIGGED DOWN TO THE RED ZONE, LEAVING PUMP FOR RELIEF CREW AND BRINGING BULK EQUIPMENT BACK TO BE REFILLED. CREW HAS JOURNEY MANAGEMENT SAFETY MEETING DISCUSSING ROUTE, CONVOY ORDER, FOLLOWING DISTANCE, HAZARDS AND DEPARTS FROM LOCATION

2.0 Attachments

2.1 EXTRACTION COYOTE TRAILS 33W-15-6C SURFACE.png





## 3.0 Custom Graphs

### 3.1 Custom Graph

