



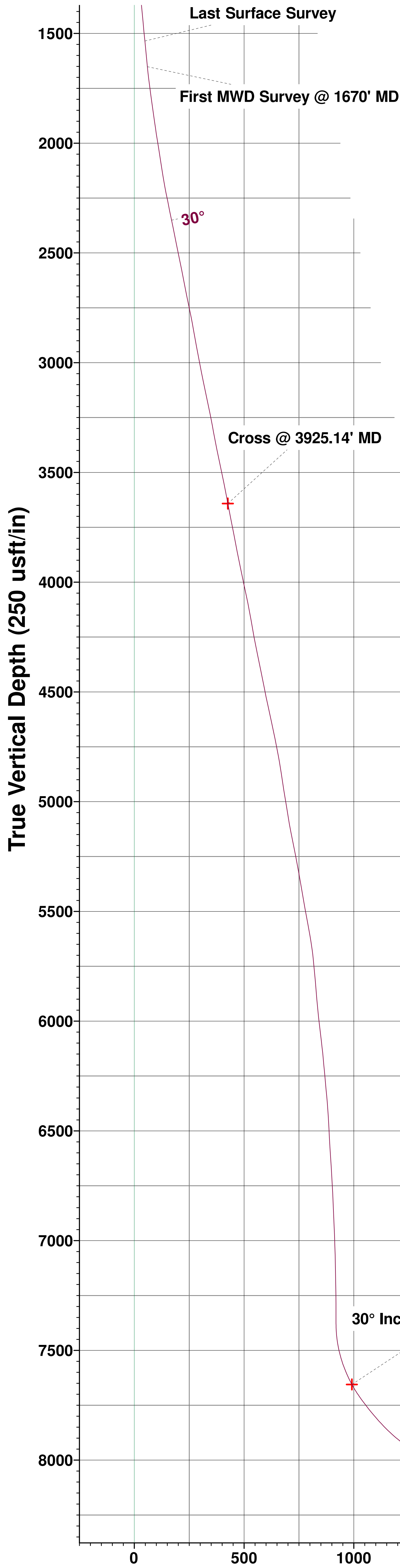
PROJECT DETAILS: Weld County, CO (NAD83)
Geodetic System: US State Plane 1983
Datum: North American Datum 1983
Ellipsoid: GRS 1980
Zone: Colorado Northern Zone
System Datum: Ground Level
Local North: True

WELL DETAILS: Coyote Trails 33W-15-6C

Ground Elevation:: 5273.00
RKB Elevation: KB @ 5301.00usft (Ensign 147)
Rig Name: Ensign 147

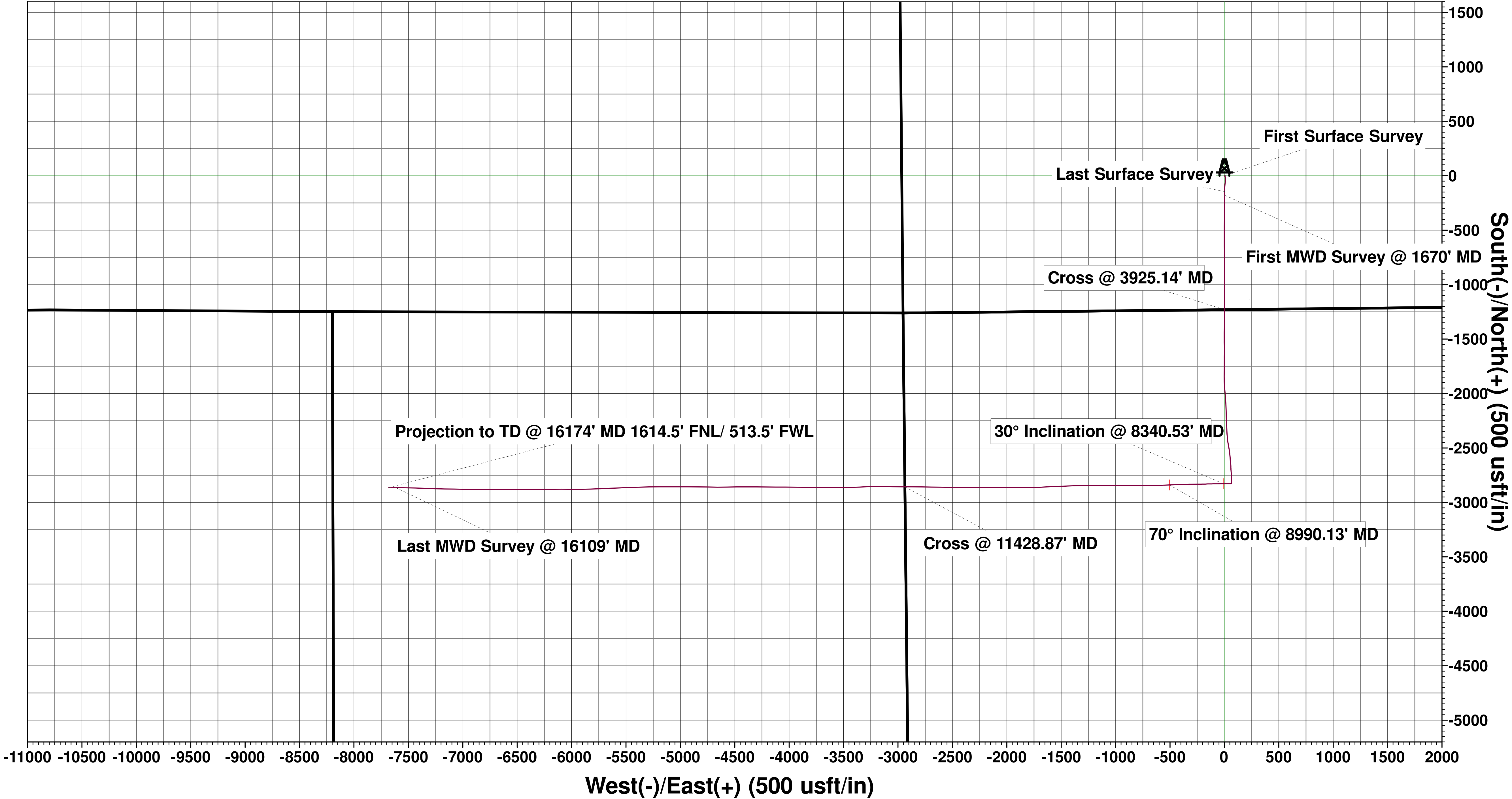


Northing	Easting	Latitude	Longitude
1249858.83	3137918.79	40.018198	-105.007569



Extraction Oil & Gas
Project: Weld County, CO (NAD83)
Site: Sec 28-T1N-R68W Coyote Trails
Well: Coyote Trails 33W-15-6C
Wellbore: Wellbore #1
Design: Wellbore #1 (Coyote Trails 33W-15-6C/Wellbore #1)
Ensign 147

ANNOTATIONS									
MD	Inc	Azi	TVD	+N/-S	+E/-W	Vsect	Departure	Annotation	
114.00	0.91	74.50	114.00	0.24	0.87	-0.90	0.91	First Surface Survey	
1548.00	16.33	178.85	1534.61	-144.84	2.37	48.04	151.56	Last Surface Survey	
1670.00	16.79	178.70	1651.55	-179.60	3.11	59.40	186.33	First MWD Survey @ 1670' MD	
3925.14	28.99	179.59	3641.77	-1230.00	0.76	426.09	1236.92	Cross @ 3925.14' MD	
8340.53	30.00	268.45	7655.31	-2827.75	-10.93	991.46	2914.97	30° Inclination @ 8340.53' MD	
8990.13	70.00	267.55	8056.45	-2839.32	-505.93	1459.71	3409.31	70° Inclination @ 8990.13' MD	
11428.87	90.54	269.83	8134.12	-2856.44	-2937.00	3745.68	5840.69	Cross @ 11428.87' MD	
16109.00	89.97	270.72	8154.20	-2864.36	-7615.43	8136.18	10520.03	Last MWD Survey @ 16109' MD	
16174.00	89.97	270.72	8154.23	-2863.54	-7680.42	8196.85	10585.03	Projection to TD @ 16174' MD 1614.5' FNL/ 513.5' FWL	



Vertical Section at 249.70° (250 usft/in)

