

# HALLIBURTON

iCem<sup>®</sup> Service

**EXTRACTION OIL & GAS**

**Coyote Trails 33W-15-4N Surface**

Sincerely,  
**Meghan Jacobs**

## Legal Notice

---

### Disclaimer:

All information in this report is provided subject to the terms and conditions which govern the services provided by Halliburton. Halliburton personnel use their best efforts in gathering information and their best judgment in interpreting it, but any interpretation, research, analysis or recommendation furnished by Halliburton are opinions based upon inferences from measurements and empirical relationships and assumptions, which inferences and empirical relationships and assumptions are not infallible, and with respect to which professionals in the industry may differ. iCem 3D Displacement results are used to understand how fluids intermix during a cement job. Simulation and 3D displacement results are not intended as and should not be used as a replacement for bond logs in determining top of cement. Current 3D model calculations are known to model more volume than the input volume for standard cases due to known calculation improvements required. For rotational cases, the modeled volume will be impacted by the same calculations impacting the standard cases, as well as additional constraints imposed to make the calculation time required operationally feasible. Therefore, until further notice, 3D displacement results should not be used for replacement of a bond log, or used as an identifier of top of cement. HALLIBURTON IS UNABLE TO GUARANTEE THE ACCURACY OF ANY CHART INTERPRETATION, RESEARCH ANALYSIS, OR JOB RECOMMENDATION and any interpretation or recommendation is not for use of or reliance upon by any third party. The customer has full responsibility for any of its decisions which are based on the information provided in this report.

Table of Contents

---

1.0    Cementing Job Summary ..... 4

    1.1    Executive Summary .....4

2.0    Real-Time Job Summary ..... 7

    2.1    Job Event Log .....7

3.0    Attachments..... 9

    3.1    Coyote Trails 33W-15-4N Surface – Job Chart with Events .....9

    3.2    Coyote Trails 33W-15-3N Surface – Job Chart without Events .....10

## 1.0 Cementing Job Summary

---

### 1.1 Executive Summary

---

Halliburton appreciates the opportunity to perform the cementing services on the **Coyote Trails 33W-15-4N** cement **Surface** casing job. A pre-job safety meeting was held before the job where details of the job were discussed, potential safety hazards were reviewed, and environmental compliance procedures were outlined.

**Approximately 14 bbls of cement were returned to surface.**

Halliburton maintains a continuous quality improvement process and appreciates any comments or suggestions that you may have. Halliburton again thanks you for the opportunity to perform service work on this well. We hope to be your solutions provider for future projects.

Respectfully,

**Halliburton Fort Lupton**

*The Road to Excellence Starts with Safety*

<b>Sold To #:</b> 369404		<b>Ship To #:</b> 3912707		<b>Quote #:</b>		<b>Sales Order #:</b> 0905578623				
<b>Customer:</b> EXTRACTION OIL & GAS -				<b>Customer Rep:</b> Todd Stephens						
<b>Well Name:</b> COYOTE TRAILS			<b>Well #:</b> 33W-15-4N			<b>API/UWI #:</b> 05-123-48254-00				
<b>Field:</b> WATTENBERG		<b>City (SAP):</b> ERIE		<b>County/Parish:</b> WELD		<b>State:</b> COLORADO				
<b>Legal Description:</b> SW SE-28-1N-68W-1200FSL-2355FEL										
<b>Contractor:</b> ENSIGN DRLG				<b>Rig/Platform Name/Num:</b> ENSIGN 147						
<b>Job BOM:</b> 7521 7521										
<b>Well Type:</b> HORIZONTAL OIL										
<b>Sales Person:</b> HALAMERICA\HX38199				<b>Srv Supervisor:</b> Nicholas Roles						
<b>Job</b>										
<b>Formation Name</b>										
<b>Formation Depth (MD)</b>		<b>Top</b>		<b>Bottom</b>						
<b>Form Type</b>					<b>BHST</b>					
<b>Job depth MD</b>		1626ft			<b>Job Depth TVD</b>					
<b>Water Depth</b>					<b>Wk Ht Above Floor</b>					
<b>Perforation Depth (MD)</b>		<b>From</b>		<b>To</b>						
<b>Well Data</b>										
<b>Description</b>	<b>New / Used</b>	<b>Size in</b>	<b>ID in</b>	<b>Weight lbm/ft</b>	<b>Thread</b>	<b>Grade</b>	<b>Top MD ft</b>	<b>Bottom MD ft</b>	<b>Top TVD ft</b>	<b>Bottom TVD ft</b>
Casing	0	9.625	8.921	36	8 RD	J-55	0	1626	0	0
Open Hole Section			13.5				0	1636	0	0
<b>Fluid Data</b>										
<b>Stage/Plug #: 1</b>										
<b>Fluid #</b>	<b>Stage Type</b>	<b>Fluid Name</b>	<b>Qty</b>	<b>Qty UoM</b>	<b>Mixing Density lbm/gal</b>	<b>Yield ft3/sack</b>	<b>Mix Fluid Gal</b>	<b>Rate bbl/min</b>	<b>Total Mix Fluid Gal</b>	
1	Red Dye Spacer	Red Dye Spacer	10	bbl	8.33			5		
<b>Fluid #</b>	<b>Stage Type</b>	<b>Fluid Name</b>	<b>Qty</b>	<b>Qty UoM</b>	<b>Mixing Density lbm/gal</b>	<b>Yield ft3/sack</b>	<b>Mix Fluid Gal</b>	<b>Rate bbl/min</b>	<b>Total Mix Fluid Gal</b>	
2	SwiftCem	SWIFTCM (TM) SYSTEM	550	sack	13.5	1.74		8	9.2	
<b>Fluid #</b>	<b>Stage Type</b>	<b>Fluid Name</b>	<b>Qty</b>	<b>Qty UoM</b>	<b>Mixing Density lbm/gal</b>	<b>Yield ft3/sack</b>	<b>Mix Fluid Gal</b>	<b>Rate bbl/min</b>	<b>Total Mix Fluid Gal</b>	
3	Fresh Water	Fresh Water	122	bbl	8.33			8		

Cement Left In Pipe	Amount	43ft	Reason		Shoe Joint
Mix Water:	pH 07	Mix Water Chloride:	00 ppm	Mix Water Temperature:	60 °F °C
Cement Temperature:	59 °F °C	Plug Displaced by:	8.33 lb/gal	Disp. Temperature:	60 °F °C
Plug Bumped?	Yes	Bump Pressure:	1050 psi MPa	Floats Held?	Yes
Cement Returns:	14 bbl m3	Returns Density:	## lb/gal kg/m3	Returns Temperature:	## °F °C
<b>Comment</b> Got 14bbbls cement to surface.					

## 2.0 Real-Time Job Summary

## 2.1 Job Event Log

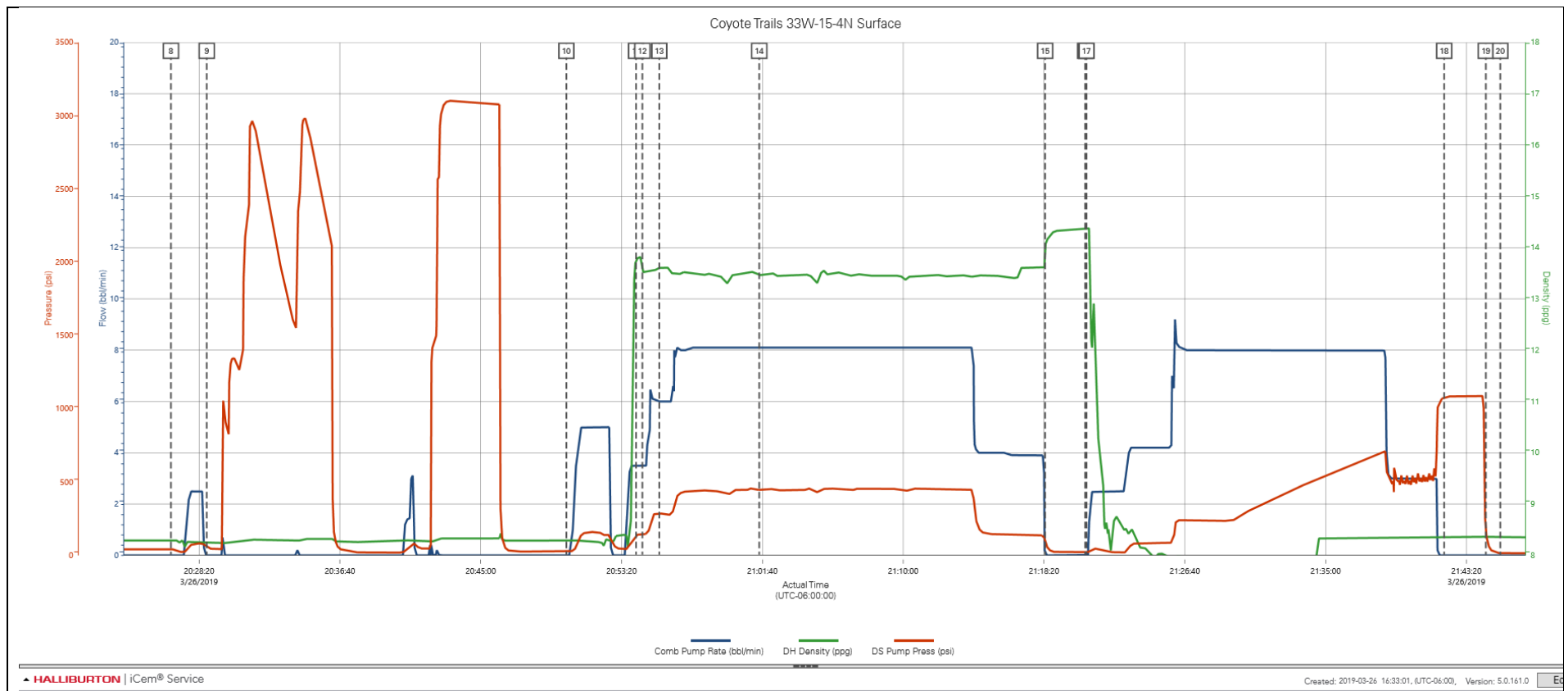
Type	Seq. No.	Activity	Graph Label	Date	Time	Source	Comb Pump Rate (bbl/min)	DH Density (ppg)	DS Pump Press (psi)	Comments
Event	1	Check Floats	Call Out	3/26/2019	15:30:00	USER				Called out by Service Coordinator for O/L at 1700
Event	2	Pre-Convoy Safety Meeting	Pre-Convoy Safety Meeting	3/26/2019	16:45:00	USER				Held meeting with all personnel in convoy to discuss directions and hazards associated with drive, all fit to drive.
Event	3	Depart from Service Center or Other Site	Depart from Service Center or Other Site	3/26/2019	17:00:00	USER				Journey Management prior to departure
Event	4	Arrive at Location from Service Center	Arrive at Location from Service Center	3/26/2019	17:30:00	USER				Upon arrival met with company man to discuss job details and calculations, performed hazard hunt and site assessment.
Event	5	Pre-Rig Up Safety Meeting	Pre-Rig Up Safety Meeting	3/26/2019	17:45:00	USER				Discussed rigging up hazards and procedure according to HMS.
Event	6	Other	Other	3/26/2019	18:00:00	USER				Water test- PH-6, Chlor-0, Temp-60. Cement temp-65.
Event	7	Pre-Job Safety Meeting	Pre-Job Safety Meeting	3/26/2019	19:00:00	USER				Held safety meeting with all job associated personnel to discuss job procedure, hazards and stop work authority.
Event	8	Start Job	Start Job	3/26/2019	20:26:40	COM4	0.00	8.29	41.00	TD-1636' OH-13.5", TP-1626' 9.625" 36#, FC-1583, Mud-8.4#
Event	9	Test Lines	Test Lines	3/26/2019	20:28:47	COM4	0.00	8.24	55.00	Pumped 3bbls to fill lines, established circulation, shutdown and closed manifold, performed 500psi k/o function test, continued with 5th gear stall at 1400psi proceeded to bring pressure to 3000psi. Held good no leaks.
Event	10	Pump Spacer 1	Pump Spacer 1	3/26/2019	20:50:04	COM4	0.00	8.29	27.00	Pumped 10bbls fresh water with 2# Red Dye at 5bpm 140psi.
Event	11	Pump Cement	Pump Cement	3/26/2019	20:54:12	COM4	3.50	13.78	136.00	Pumped 550sks or 170.5bbls 13.5# 1.74y 9.2g/s Swiftcem at 8bpm 410psi.

Event	12	Check Weight	Check Weight	3/26/2019	20:54:34	COM4	3.50	13.51	146.00	Weight verified with pressurized mud scales.
Event	13	Check Weight	Check Weight	3/26/2019	20:55:34	COM4	6.00	13.61	284.00	Weight verified with pressurized mud scales.
Event	14	Check Weight	Check Weight	3/26/2019	21:01:29	COM4	8.10	13.47	443.00	Weight verified with pressurized mud scales.
Event	15	Shutdown	Shutdown	3/26/2019	21:18:24	COM4	0.00	13.93	93.00	
Event	16	Drop Top Plug	Drop Top Plug	3/26/2019	21:20:46	COM4	0.00	14.37	22.00	Dropped by HES supervisor, witnessed by company man.
Event	17	Pump Displacement	Pump Displacement	3/26/2019	21:20:51	COM4	0.00	14.37	22.00	Pumped 122bbls of fresh water at 8bpm.
Event	18	Bump Plug	Bump Plug	3/26/2019	21:42:01	COM4	0.00	8.35	1079.00	Slowed down to 3bpm at 110bbls away, final circulating pressure - 550psi, Bumped at 1050psi.
Event	19	Check Floats	Check Floats	3/26/2019	21:44:29	USER	0.00	8.35	150.00	Released pressure and got 0.5bbls back. Floats held.
Event	20	End Job	End Job	3/26/2019	21:45:20	COM4	0.00	8.35	15.00	Got 15bbls cement to surface.
Event	21	Pre-Rig Down Safety Meeting	Pre-Rig Down Safety Meeting	3/26/2019	21:50:00	USER	18.50	8.43	363.00	Discussed rigging down hazards and procedure according to HMS with all HES personnel
Event	22	Safety Meeting - Departing Location	Safety Meeting - Departing Location	3/26/2019	22:45:00	USER				Held meeting with all personnel in convoy to discuss directions and hazards associated with drive, all fit to drive.
Event	23	Depart Location for Service Center or Other Site	Depart Location for Service Center or Other Site	3/26/2019	23:00:00	USER				Pre journey management prior to departure.



## 3.0 Attachments

### 3.1 Coyote Trails 33W-15-4N Surface – Job Chart with Events



## 3.2 Coyote Trails 33W-15-3N Surface – Job Chart without Events

