



PROJECT DETAILS: Weld County, CO (NAD83)  
Geodetic System: US State Plane 1983  
Datum: North American Datum 1983  
Ellipsoid: GRS 1980  
Zone: Colorado Northern Zone  
System Datum: Ground Level  
Local North: True

WELL DETAILS: Coyote Trails 33W-15-1N

Ground Elevation:: 5273.00  
RKB Elevation: KB @ 5301.00usft (Ensign 147)  
Rig Name: Ensign 147



Northing 1249858.53      Easting 3137865.02      Latitude 40.018198      Longitude -105.007761

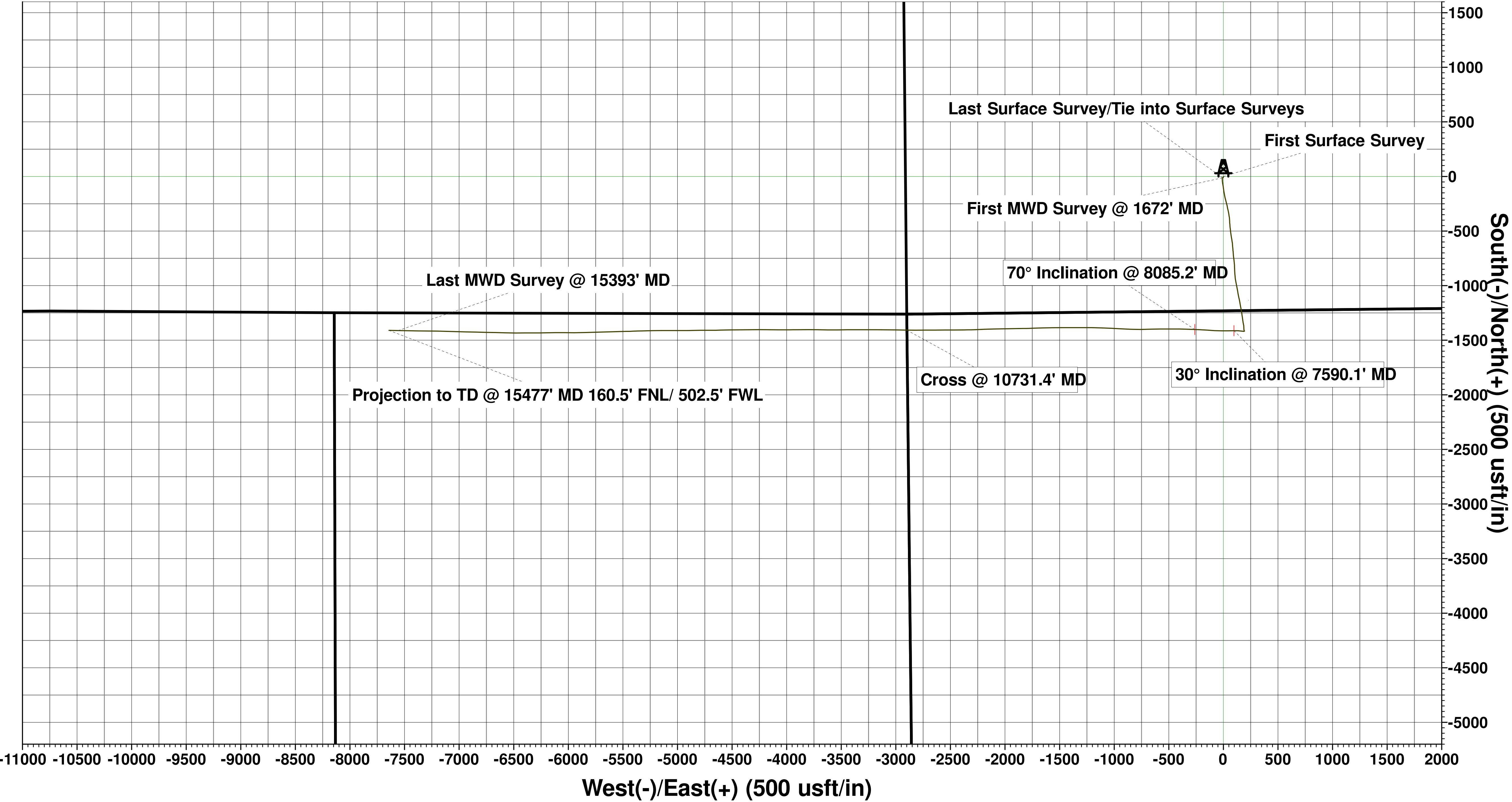
Extraction Oil & Gas  
Project: Weld County, CO (NAD83)  
Site: Sec 28-T1N-R68W Coyote Trails  
Well: Coyote Trails 33W-15-1N  
Wellbore: Wellbore #1  
Design: Wellbore #1 (Coyote Trails 33W-15-1N/Wellbore #1)  
Ensign 147

ANNOTATIONS

MD	Inc	Azi	TVD	+N/-S	+E/-W	VSect	Departure	Annotation
114.00	0.49	162.86	114.00	-0.47	0.14	-0.06	0.49	First Surface Survey
1548.00	0.92	261.09	1547.90	-11.60	-7.52	9.51	16.82	Last Surface Survey/Tie into Surface Surveys
1672.00	1.37	247.67	1671.87	-12.32	-9.88	11.95	19.30	First MWD Survey @ 1672' MD
7590.10	29.99	268.46	7371.39	-1412.31	97.46	161.04	1540.98	30° Inclination @ 7590.1' MD
8085.20	70.00	272.09	7697.53	-1401.87	-261.34	511.96	1900.22	70° Inclination @ 8085.2' MD
10731.40	87.10	270.85	7795.18	-1407.15	-2898.98	3106.57	4538.02	Cross @ 10731.4' MD
15393.00	91.03	270.98	7792.24	-1411.25	-7558.62	7689.22	9198.40	Last MWD Survey @ 15393' MD
15477.00	91.03	270.98	7790.73	-1409.82	-7642.59	7771.54	9282.38	Projection to TD @ 15477' MD 160.5' FNL/ 502.5' FWL

1000  
1500  
2000  
2500  
3000  
3500  
4000  
4500  
5000  
5500  
6000  
6500  
7000  
7500  
8000

Last Surface Survey/Tie into Surface Surveys  
First MWD Survey @ 1672' MD



True Vertical Depth (250 usft/in)

Vertical Section at 259.52° (250 usft/in)

