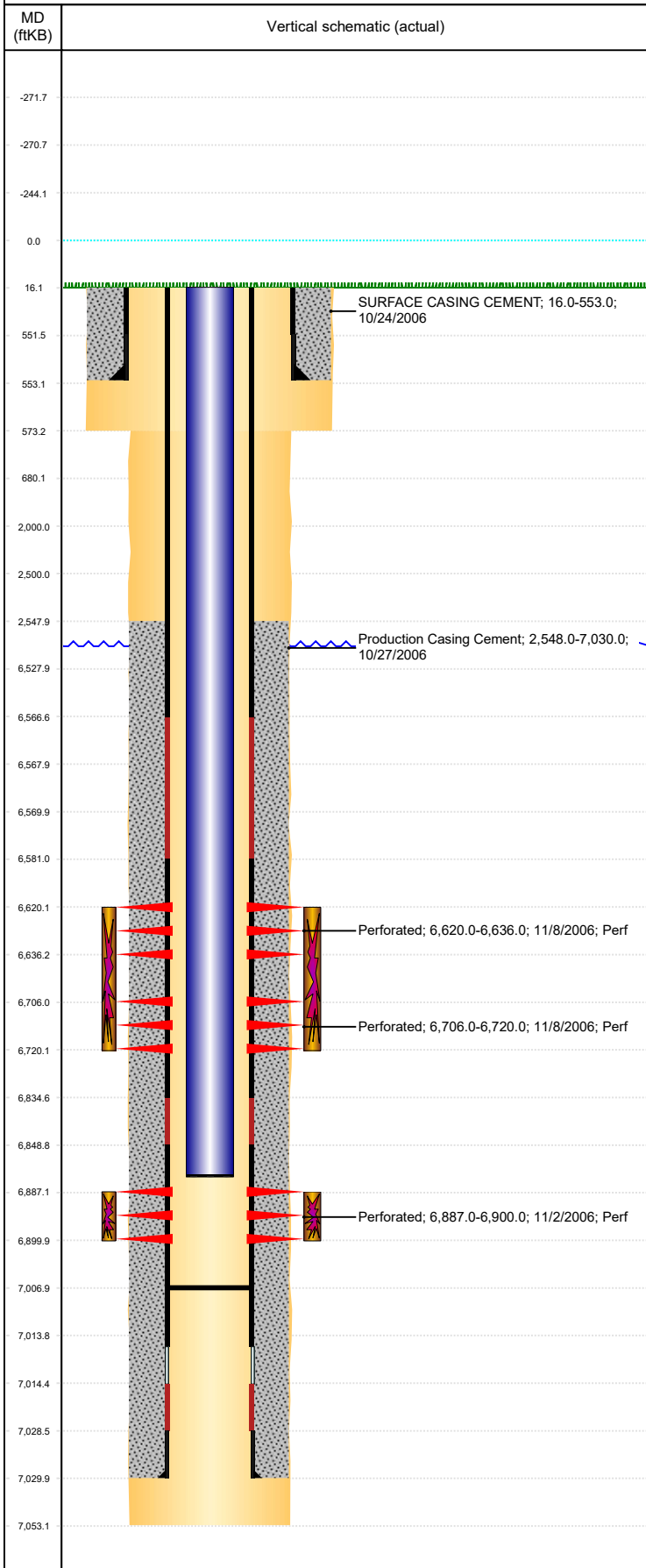


Well Name: CONNELL C04-19

VERTICAL, ORIGINAL HOLE, 6/4/2019 11:33:20 AM



Well Header									
API 05-123-27356		Business Unit DJ BASIN			District 15		Well Config VERTICAL		
KB - GL / MSL (ft... 16.00		Spud Date 10/24/2006		P & A Date		Well Production Status PR			SoRT No
Comment									
Surface Location (Congressional)									
Qtr 3 NE	Qtr 4 NW	Section 4	Twtnshp 4	Twtnsh... N	Range 64	Rng E/... W	Actual Latitude (°) 40.34516960		Actual Longitude (°) -104.55994385
Wellbore Sections									
Section Des			Size (in)			Act Top, MD (ftKB)		Act Btm, MD (ftKB)	
SURFACE			12 1/4			16		573	
PRODUCTION			7 7/8			573		7,053	
Casing Strings									
Csg Des			Run Date		OD (in)	Wt/Len (lb/ft)	Grade	Top, MD (ftKB)	MD (ftKB)
Surface			10/24/2006		8 5/8	24.00	J-55	16.0	553.0
Production			10/27/2006		4 1/2	11.60	M-80	16.0	7,030.0
Cement									
Des					Start Date		Top (ftKB)		Btm (ftKB)
SURFACE CASING CEMENT					10/24/2006		16.0		553.0
Production Casing Cement					10/27/2006		2,548.0		7,030.0
Zone Statuses									
Zone Name	Status Date	Status	Fluid Type	Job					Prod Method
CODELL	11/10/2006	PR		DRILLING/COMPLETION - ORIGINAL, 10/24/200...					Flowing
NIOBRARA	11/10/2006	PR		DRILLING/COMPLETION - ORIGINAL, 10/24/200...					Flowing
Perforation Data									
Linked Zone		Bnch/Stg	Entered Shot Total	Top (ftKB)		Btm (ftKB)		Date	
NIOBRARA, ORIGINAL HOLE			96	6,620.00		6,636.00		11/8/2006	
NIOBRARA, ORIGINAL HOLE			84	6,706.00		6,720.00		11/8/2006	
CODELL, ORIGINAL HOLE			52	6,887.00		6,900.00		11/2/2006	
Stimulation Intervals									
Zone				Start Date		Top (ftKB)		Btm (ftKB)	
NIOBRARA, ORIGINAL HOLE				11/8/2006		6,620.0		6,720.0	
CODELL, ORIGINAL HOLE				11/8/2006		6,887.0		6,900.0	
Other In Hole									
Run Date		Des				OD (in)	Top (ftKB)	Btm (ftKB)	
4/16/2019		Plunger Lift				1.9			
Logs									
Date		Type				Top, MD (ftKB)		Btm, MD (ftKB)	
10/27/2006		COMPENSATED DENSITY				2,600.0		7,033.0	
10/27/2006		INDUCTION				550.0		7,053.0	
11/2/2006		CEMENT BOND				2,415.0		7,014.0	
2/27/2017		GYRO				0.0		6,700.0	
Plug Back Total Depths									
Date		Type		Com					Depth (ftKB)
11/2/2006		FILL		DEPTH LOGGER ON CBL					7,016.0
2/13/2007		FILL		D/O & PUSH CIFTBP TO 7007', CIRCULATE CLEAN					7,007.0