

	Wellsite	Wellsite		Wellsite	Wellsite		Wellsite	Wellsite			
Adam Schlenz	2019-03-23	2019-03-28	Andrew Hays	2019-03-23	2019-03-28						
Mud Properties Record											
Date / Time	Run No.	Depth	Mud Type	Density	Viscosity	pH	Fluid Loss	Oil / Water	Source	Total Chlorides	K+
		(ft)		(ppg)	(cP)		(cm3)			(ppm)	(%)
2019-03-25 01:30	1	1992.00	Oil Based Mud	9.2	13	N/A	20.4	72.5/18.5	Active Pit	25267	0.00
2019-03-25 12:30	1	5139.00	Oil Based Mud	9.0	11	N/A	14.0	73.5/18	Active Pit	26239	0.00
2019-03-26 02:00	1	7921.00	Oil Based Mud	9.6	12	N/A	14.0	70/18.5	Active Pit	25753	0.00
2019-03-26 12:30	1	10160.00	Oil Based Mud	9.6	12	N/A	14.0	70.2/18	Active Pit	24295	0.00
2019-03-27 01:30	2	11374.00	Oil Based Mud	9.6	12	N/A	15.0	70.1/18	Active Pit	24781	0.00
2019-03-27 12:30	2	12073.00	Oil Based Mud	9.8	12	N/A	14.0	69/18	Active Pit	24295	0.00
2019-03-28 01:30	2	15240.00	Oil Based Mud	9.8	13	N/A	16.0	70/17	Active Pit	23810	0.00

Equipment and Service Data

Run No.	Tool	Serial Number	Measurement	Sensor Offset (ft)	Bit Offset (ft)	Max O.D. (in)	Min I.D. (in)
1	AutoTrak Curve Steering Unit	14614039	Near Bit VSS	5.93	6.73	7.000	4.330
1	AutoTrak Curve Steering Unit	14614039	Near Bit Inclination	5.93	6.73	7.000	4.330
1	AutoTrak Curve MWD	12603327	Gamma (single)	2.78	12.90	7.000	3.250
1	AutoTrak Curve MWD	12603327	Directional (mag)	12.27	22.39	7.000	3.250
2	AutoTrak Curve Steering Unit	13993180	Near Bit VSS	5.93	6.73	7.000	4.330
2	AutoTrak Curve Steering Unit	13993180	Near Bit Inclination	5.93	6.73	7.000	4.330
2	AutoTrak Curve MWD	12109322	Gamma (single)	2.77	12.90	7.000	3.250
2	AutoTrak Curve MWD	12109322	Directional (mag)	12.27	22.40	7.000	3.250

Service and Tool Mnemonics

Mnemonic	Name	Description
ATC SU	AutoTrak Curve SU	Auto Trak Curve Steering Unit
ATC MWD	AutoTrak Curve MWD	Auto Trak Curve MWD
ATC LCPM	AutoTrak Curve LCPM	Auto Trak Curve LCPM

Comments

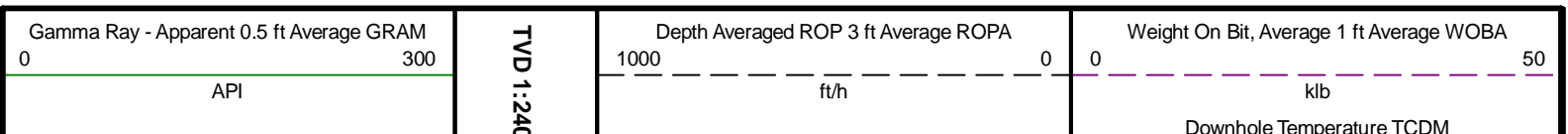
1	Depth measurements were obtained from a depth control system not supplied or operated by Baker Hughes. Due to the lack of control by Baker Hughes, depth calibrations and measurements could not be independently verified.
2	Baker Hughes LWD runs 1 and 2 utilized a 6.75 inch NaviGamma service (Directional and Gamma Ray) behind a 8.5 inch bit and rotary steerable assembly from 1940 to 17630 feet MD (1940 to 6837 feet TVD).
3	The Gamma Ray Apparent (GRAM) data is presented 0 to 300 API, per the customer's request.
4	The interval from 1940 to 11374 feet MD (1940 to 6837 feet TVD) does not have contain downhole temperature data, due to the memory module not recording the readings properly.

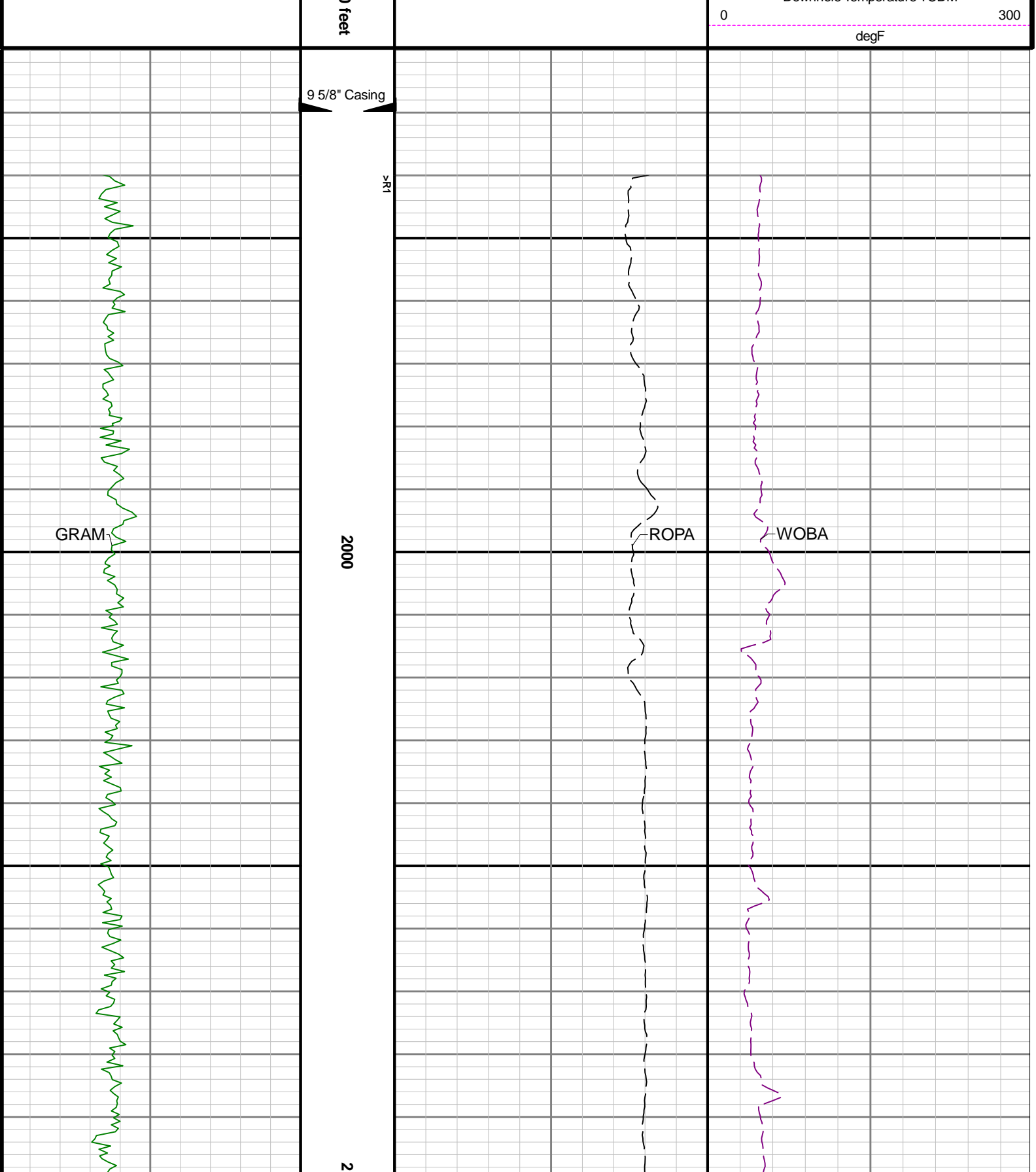
Remarks

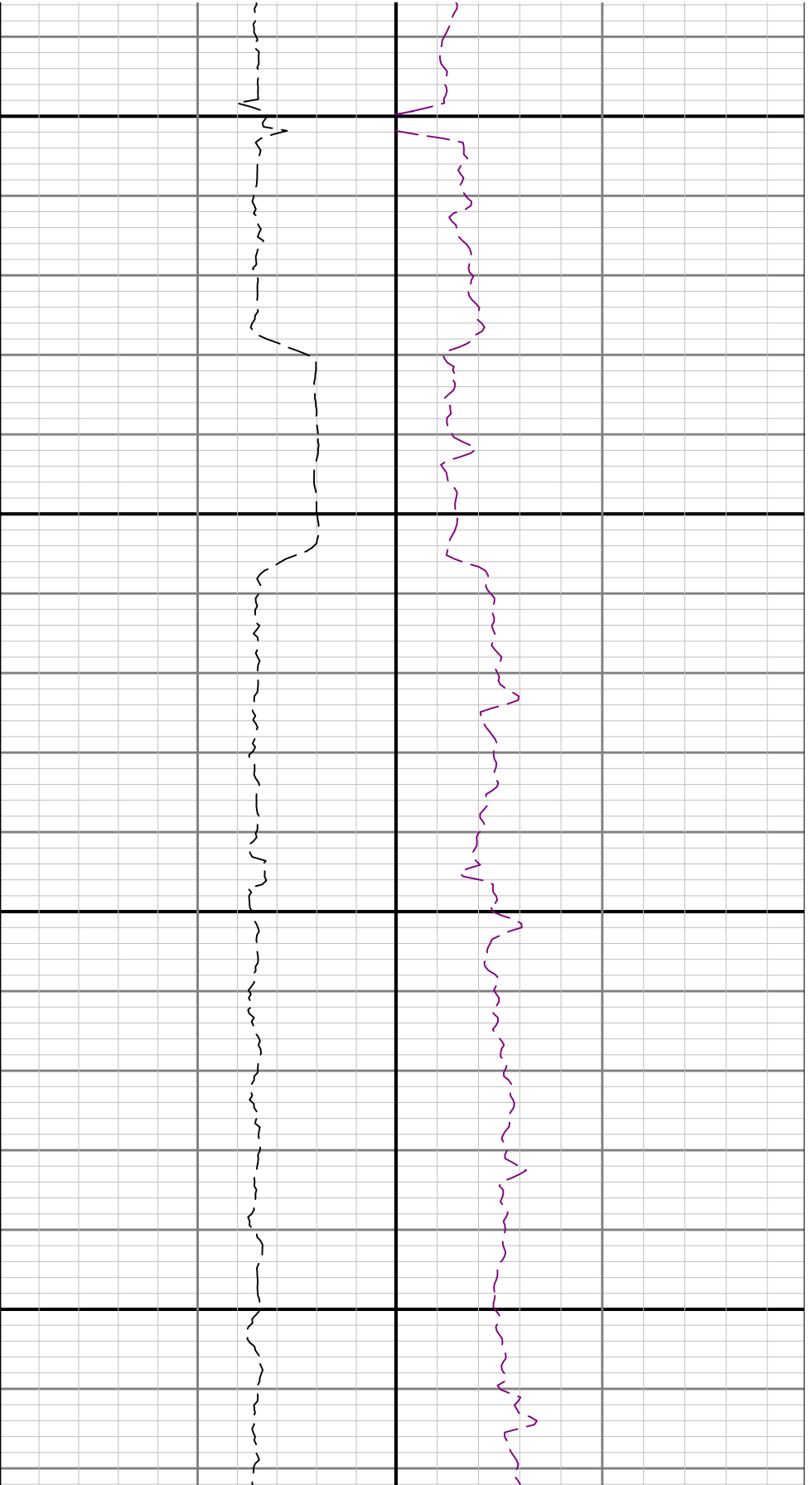
Number	Depth (ft)	Hole Section (in)	Run No.	Remark
--------	---------------	----------------------	---------	--------

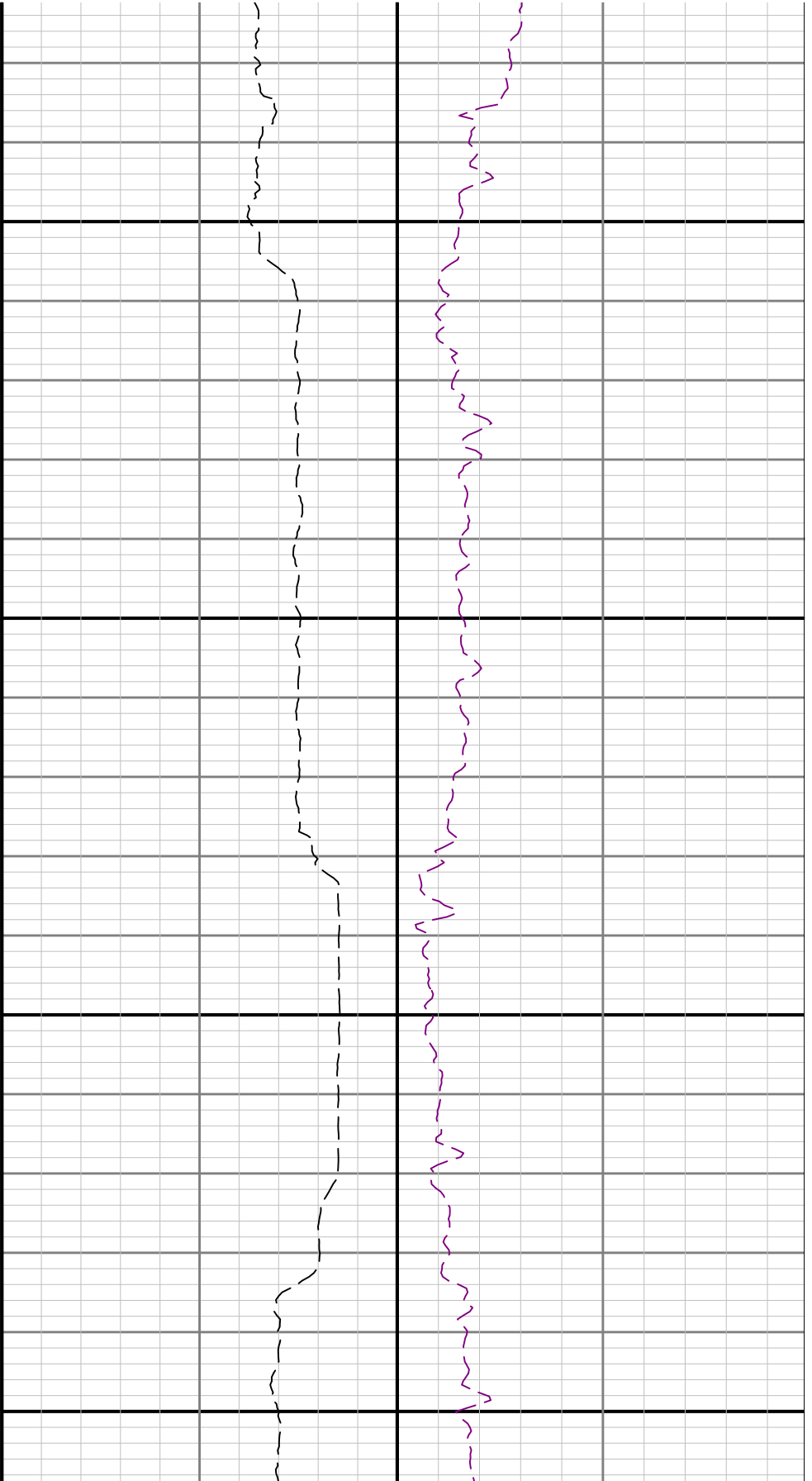
Curve Mnemonics

Presented Curves	Description	Units
ROPA	Depth Averaged ROP 3 ft Average	ft/h
WOBA	Weight On Bit, Average 1 ft Average	klb
GRAM	Gamma Ray - Apparent - Memory 0.5 ft Average	API
TCDM	Directional Real-Time Survey Temperature	degF



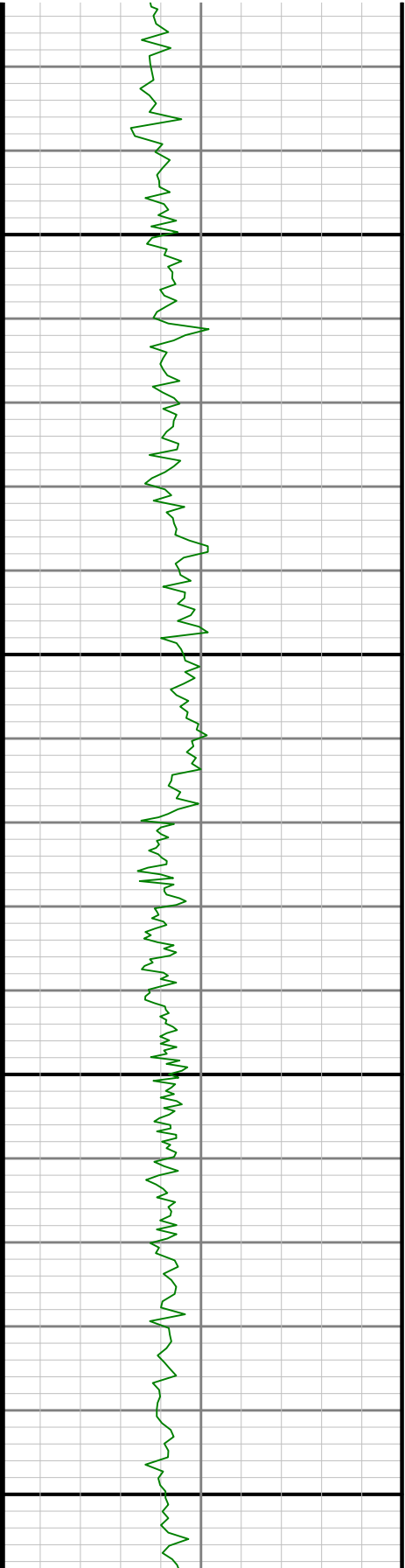


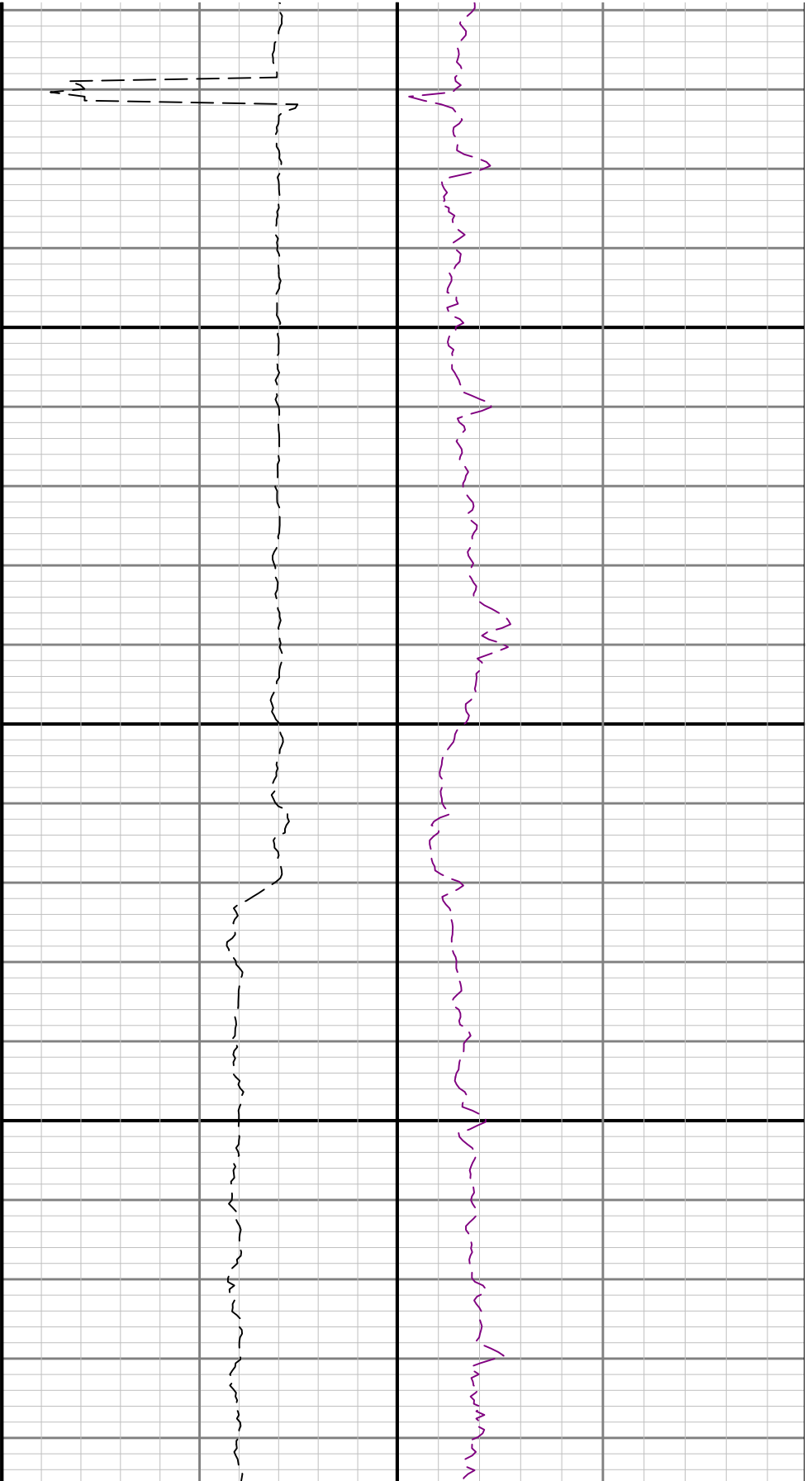




2500

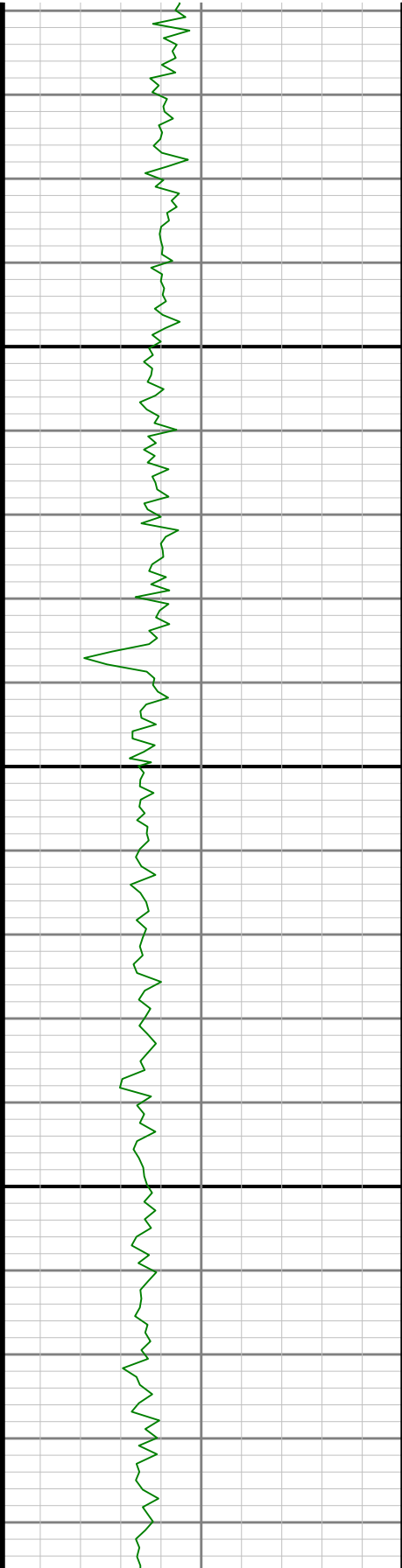
2600

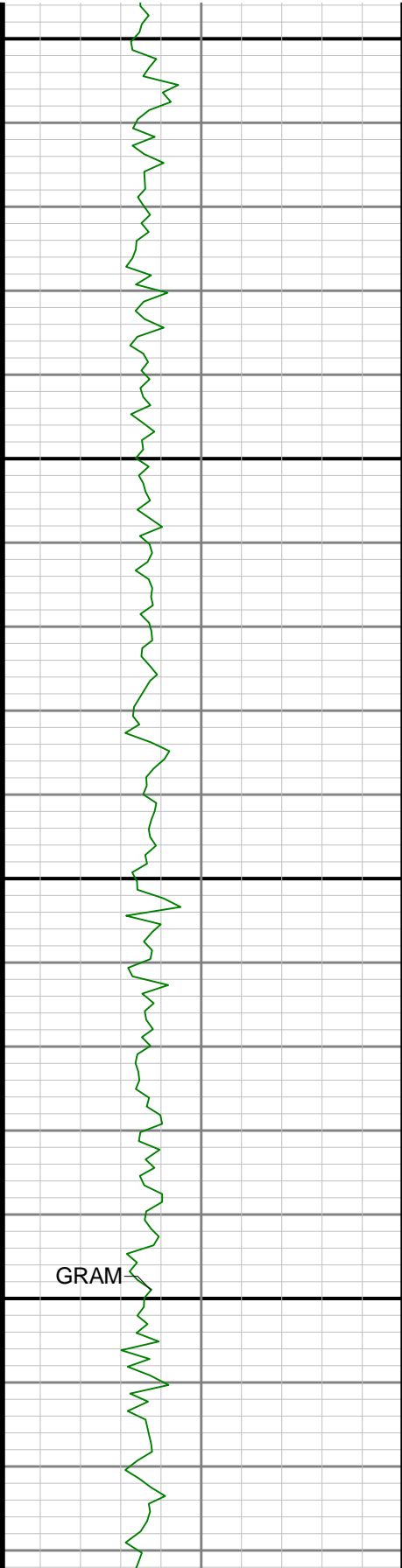




2700

2800





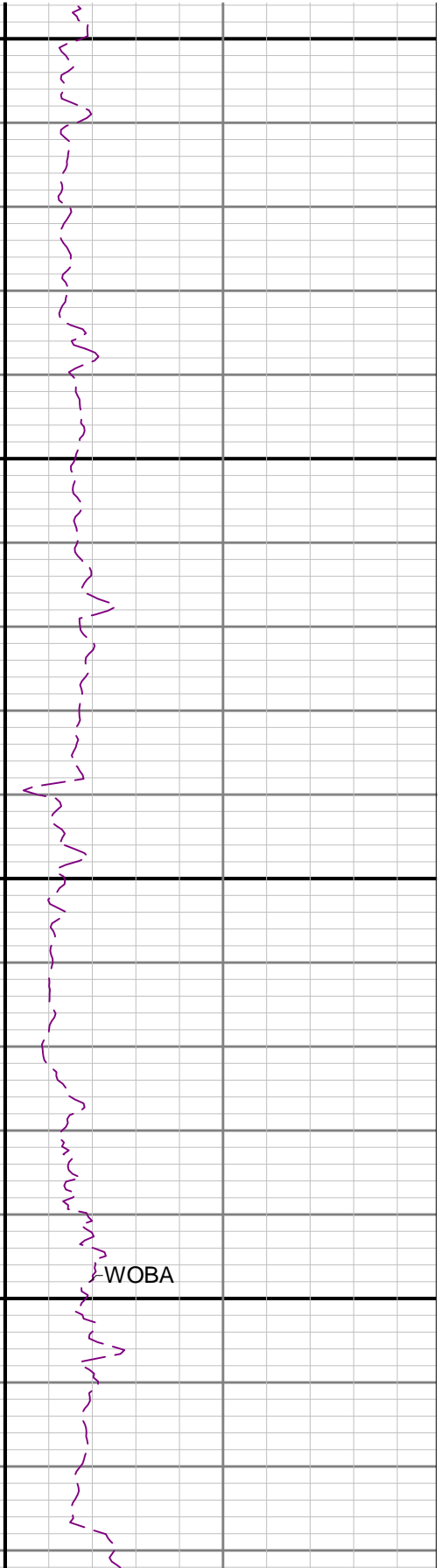
2900

3000

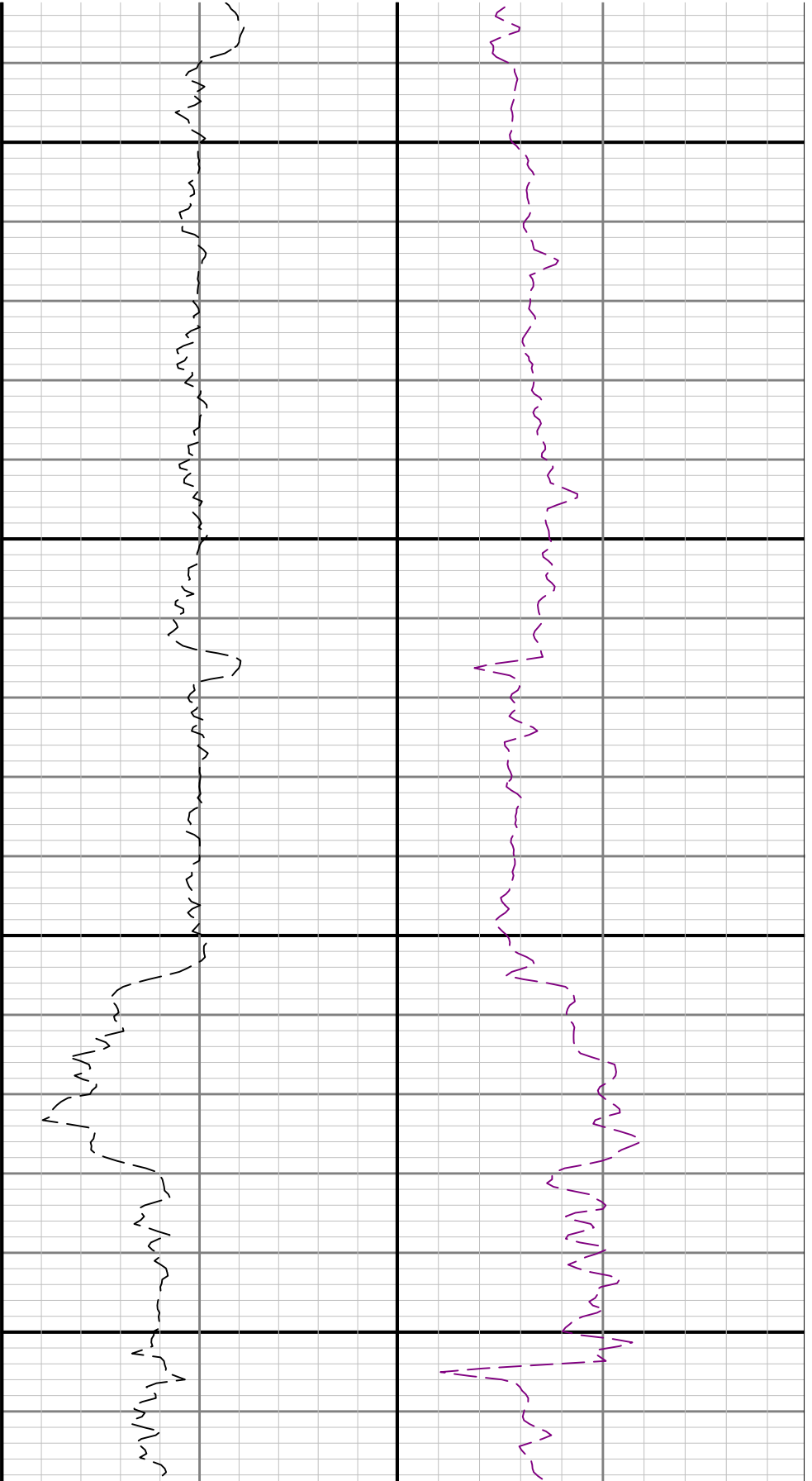
GRAM



ROPA

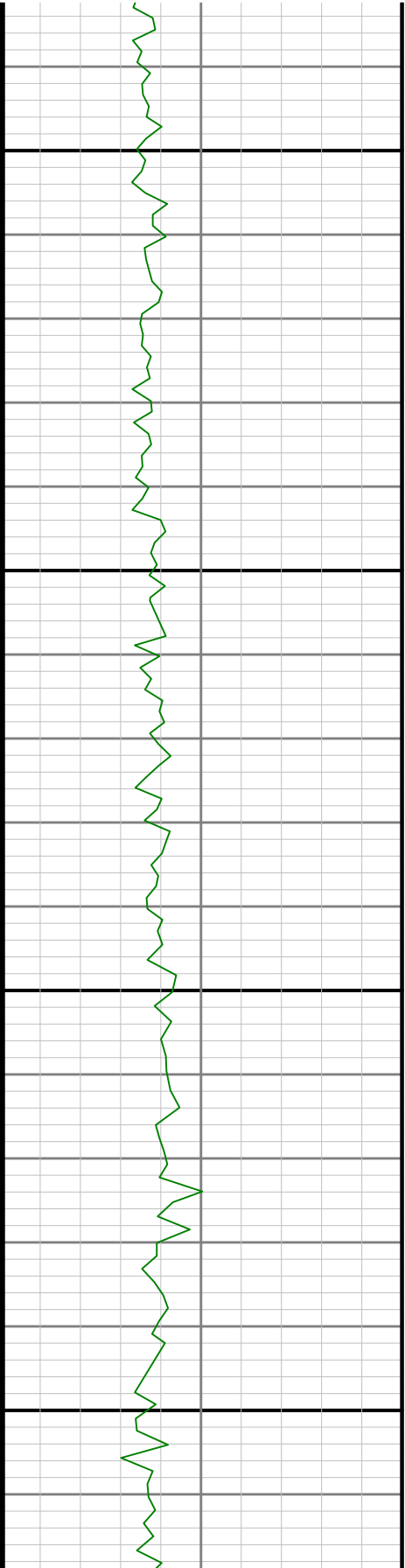


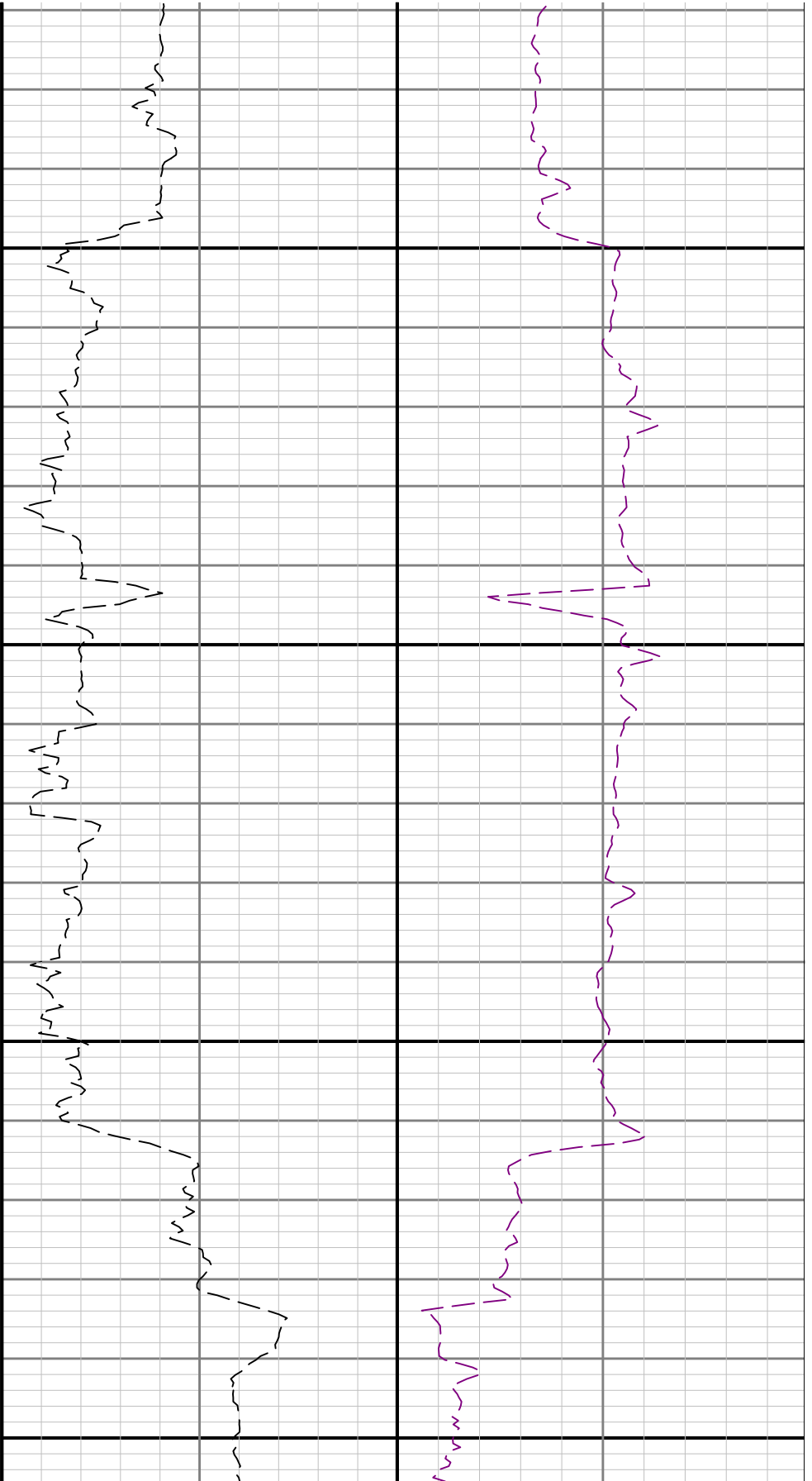
WOBA



3100

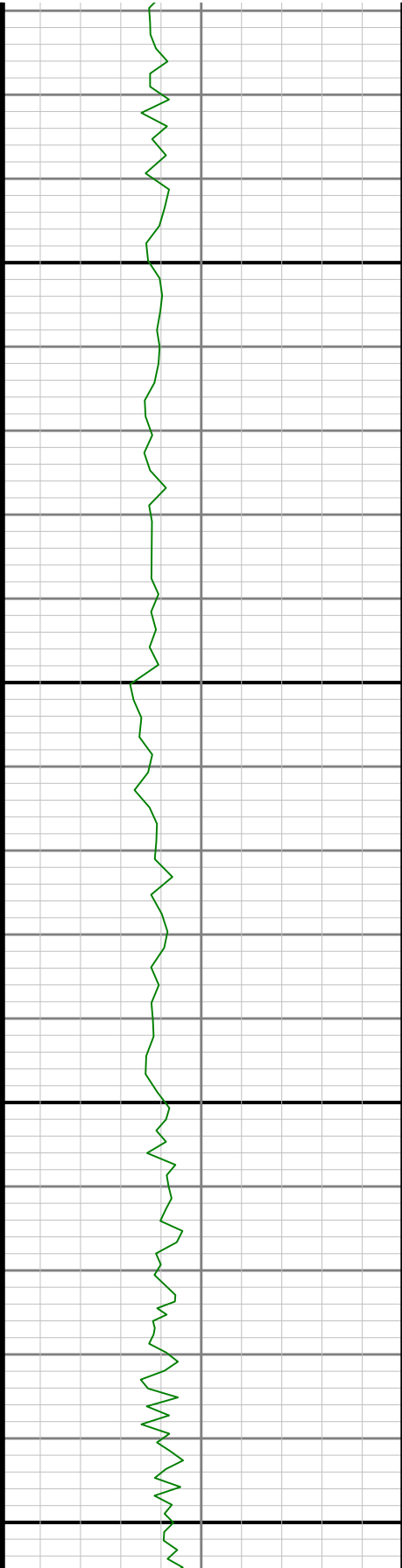
3200

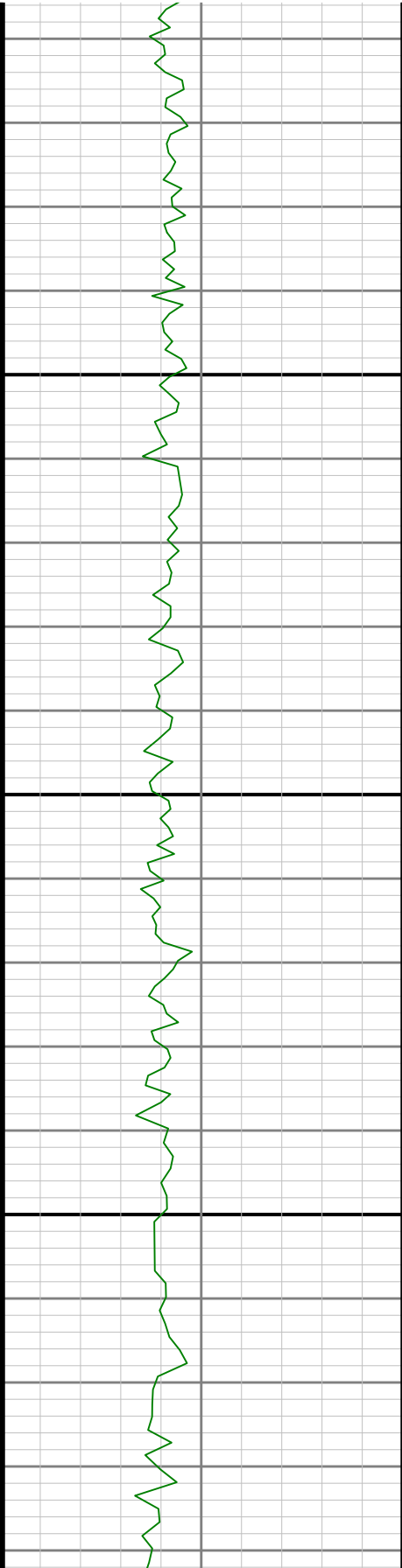
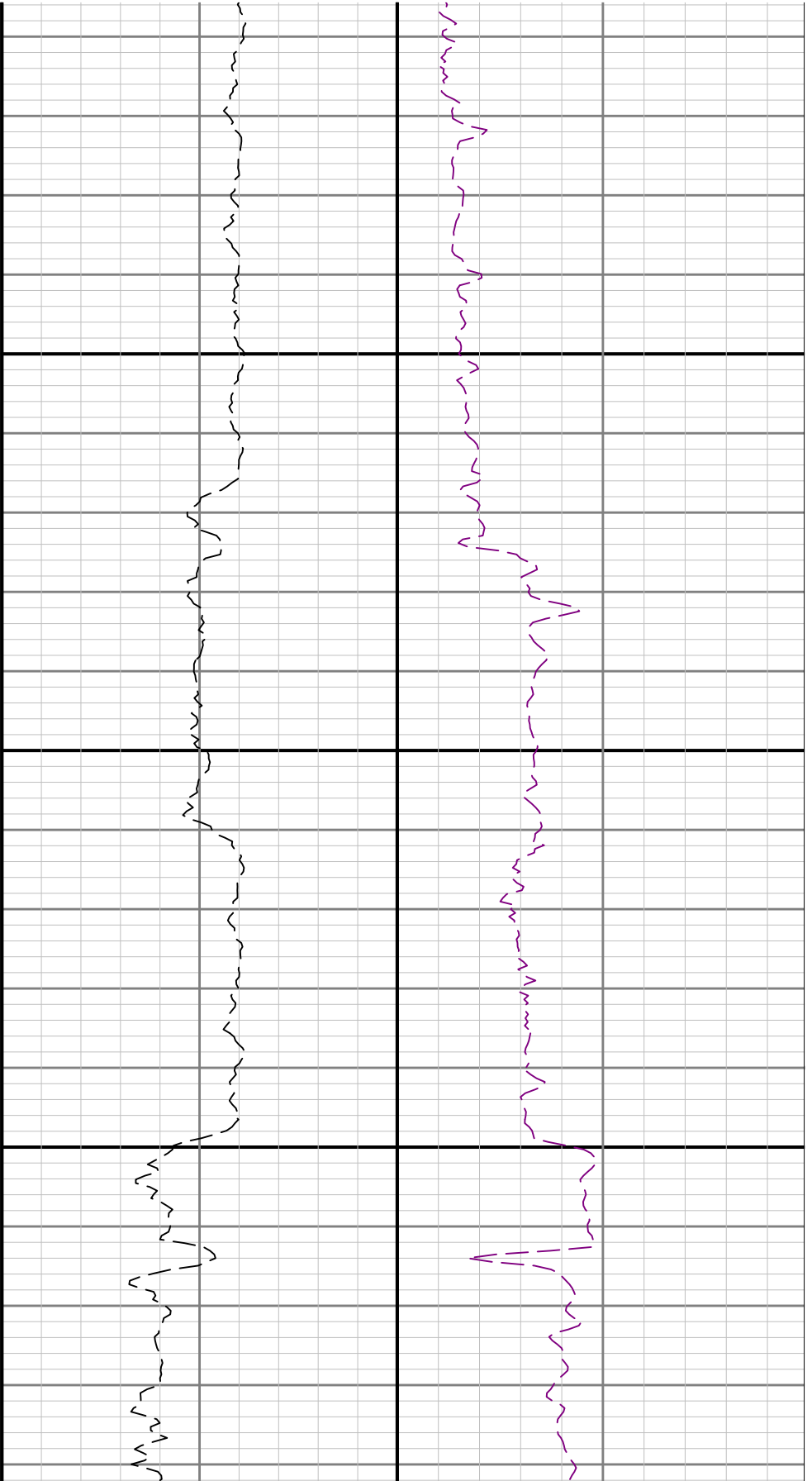


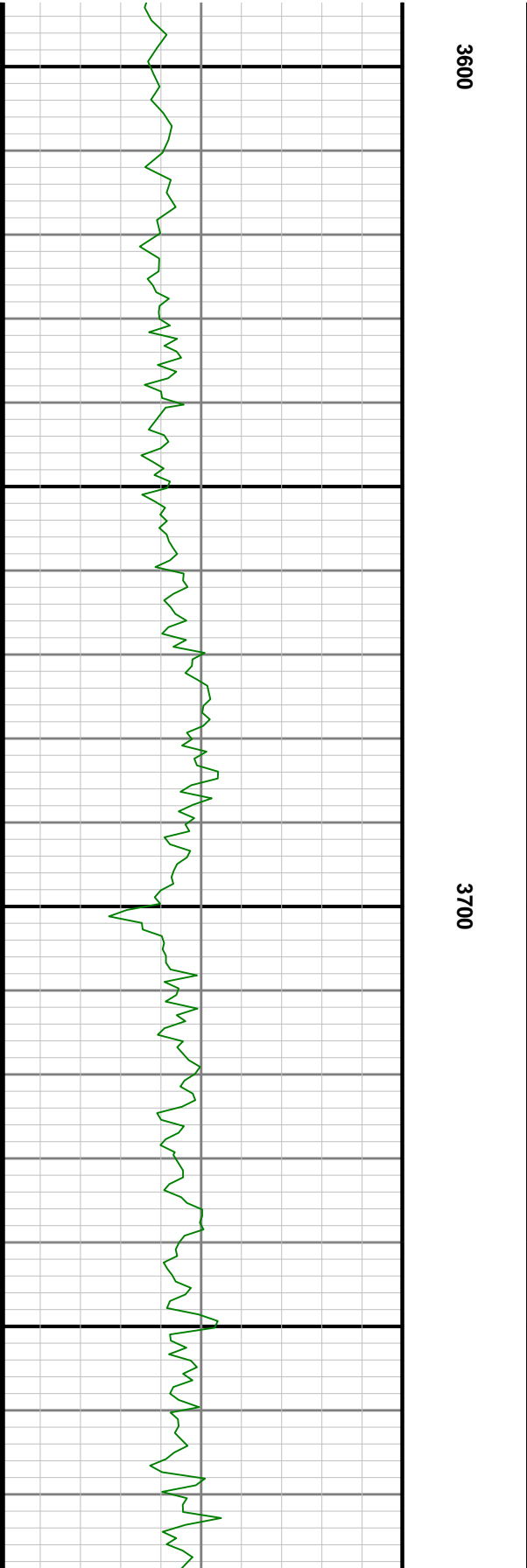
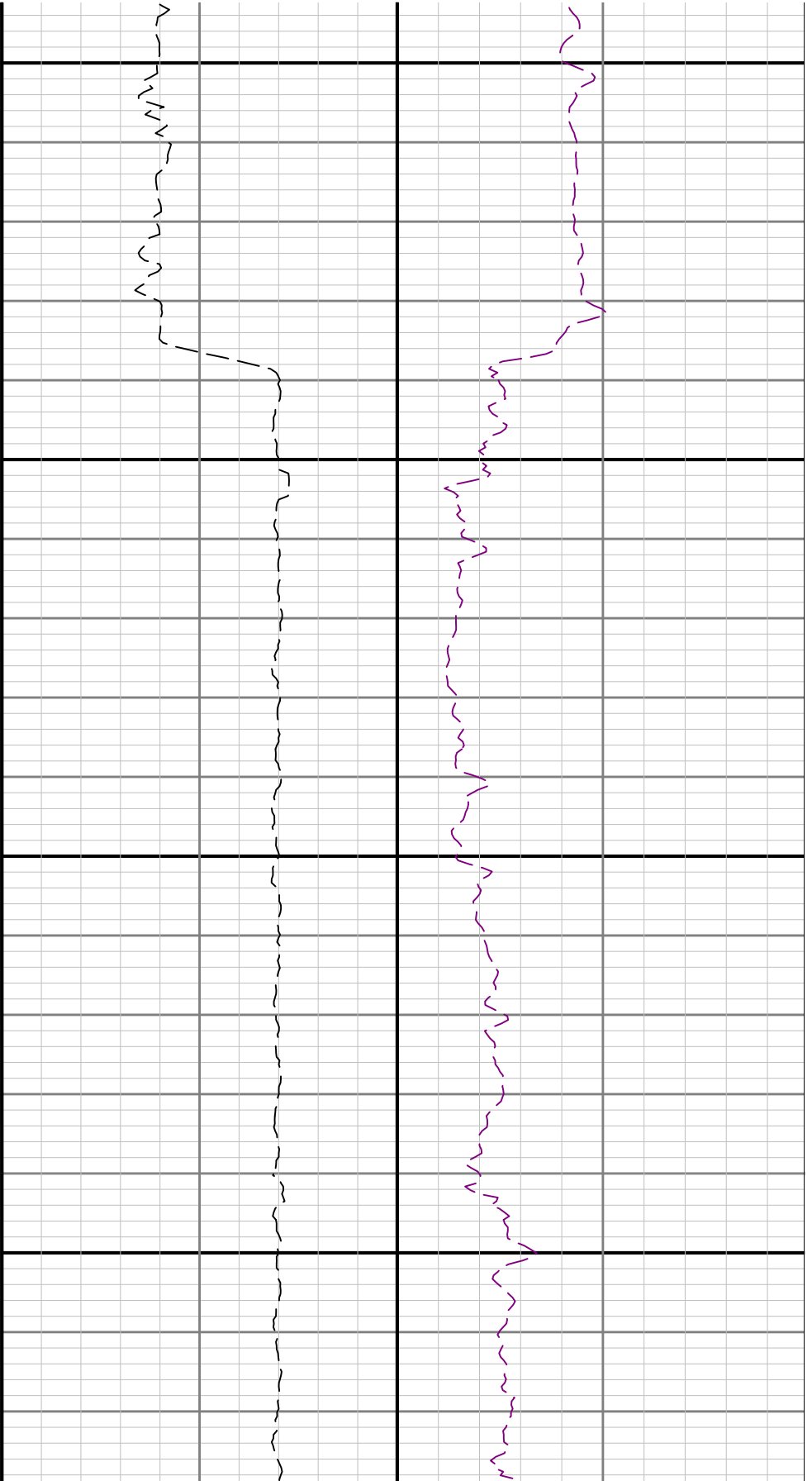


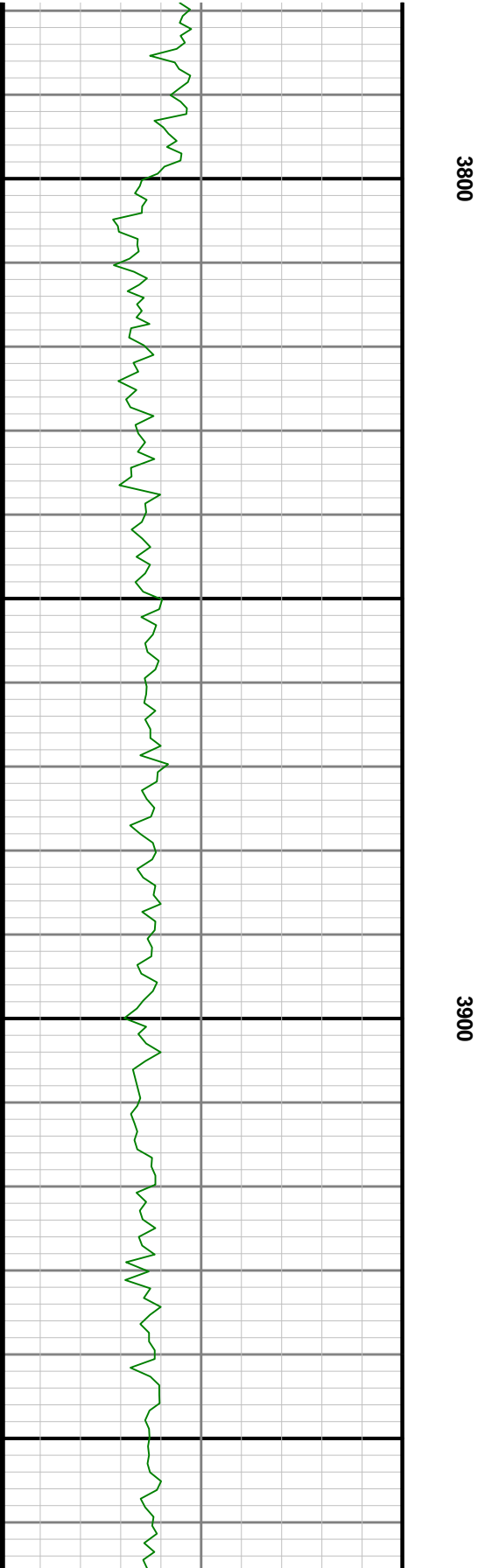
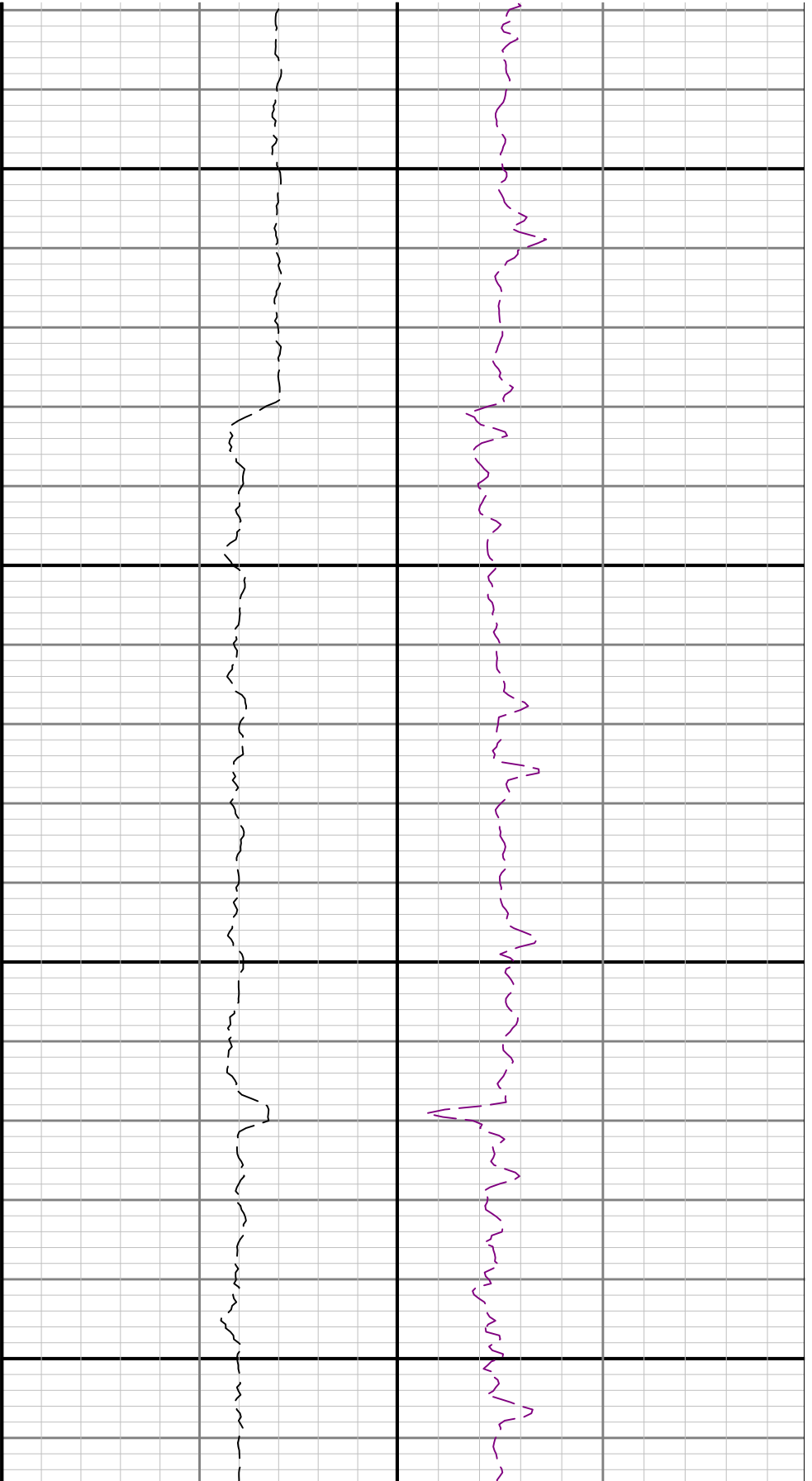
3300

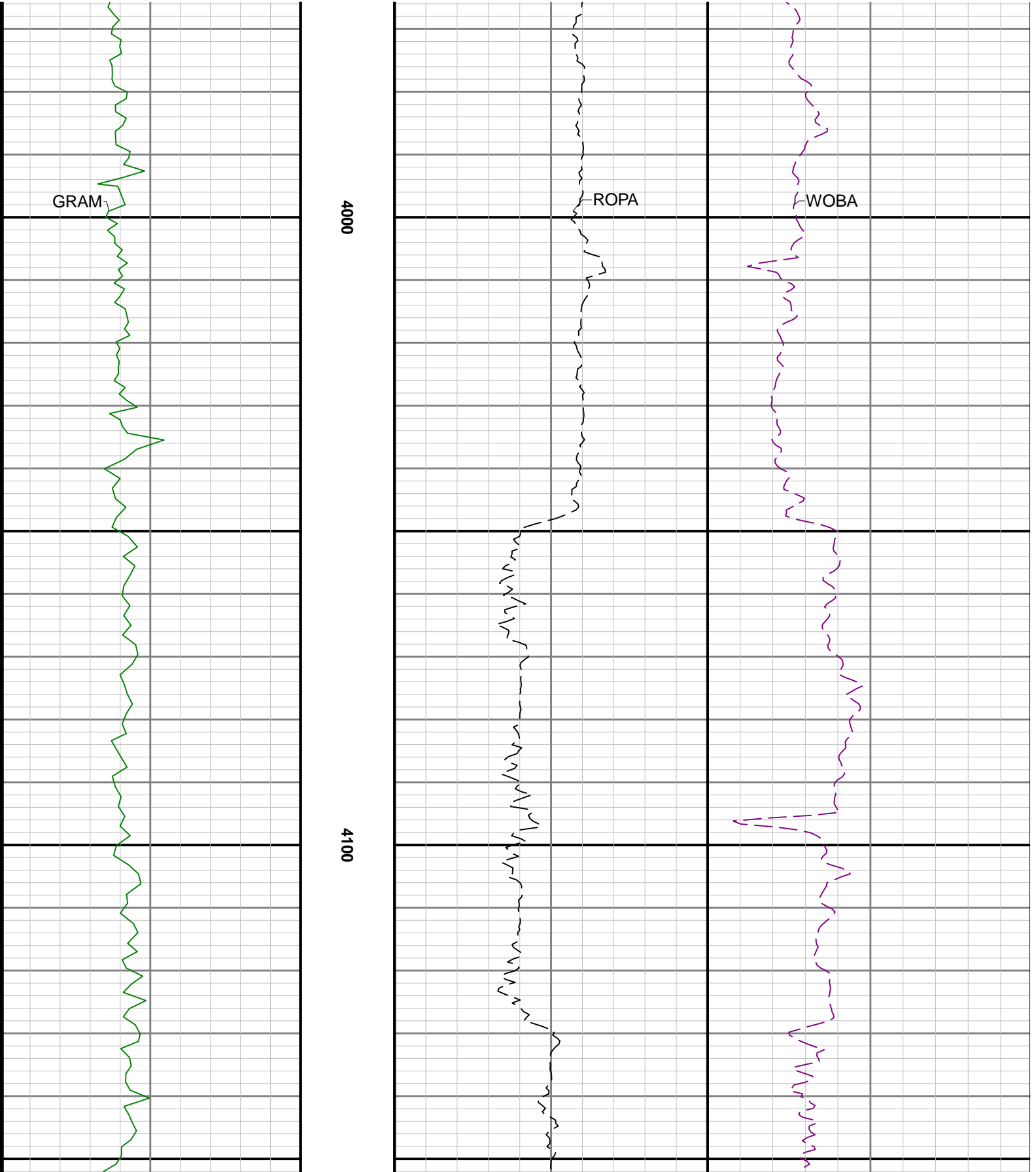
3400

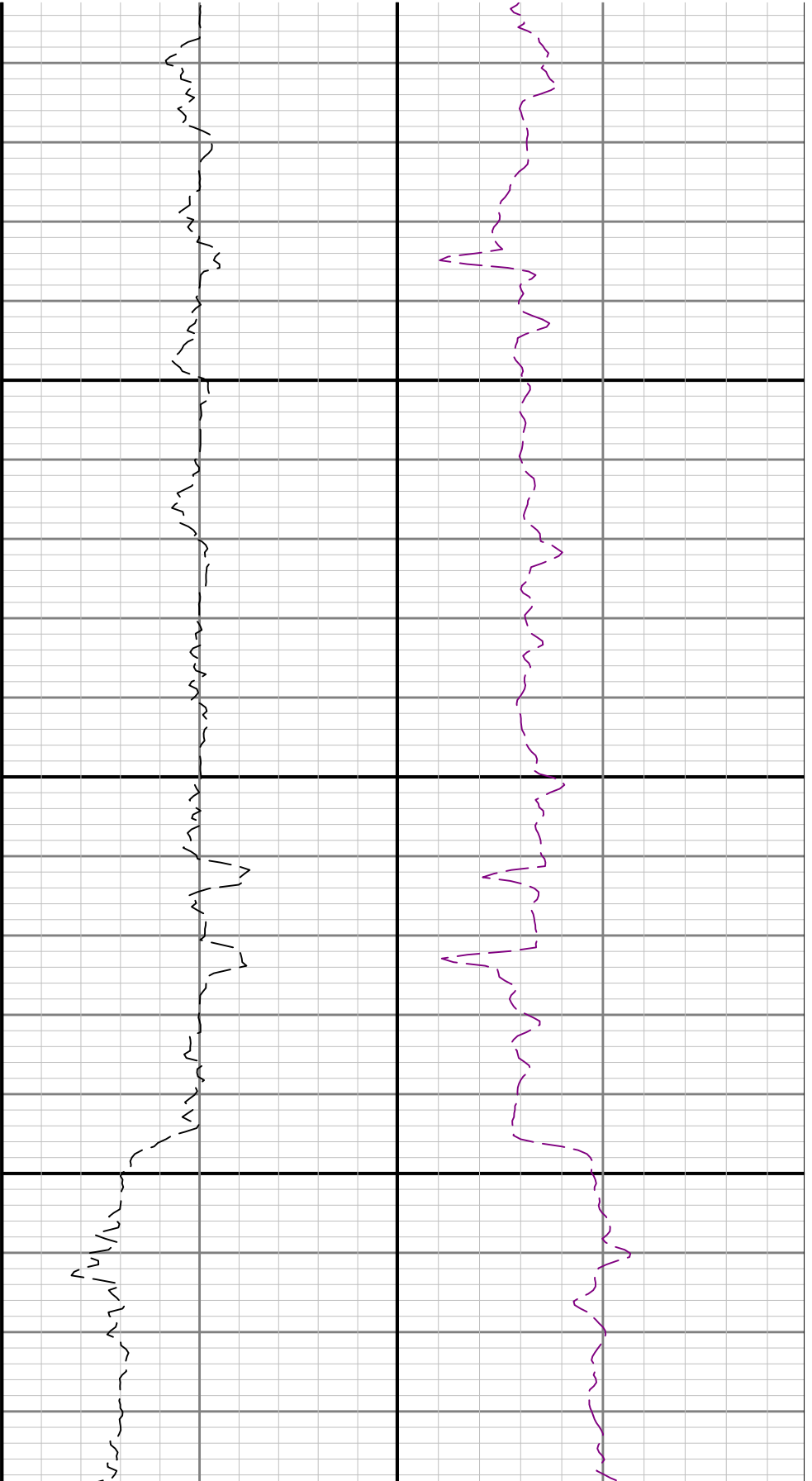






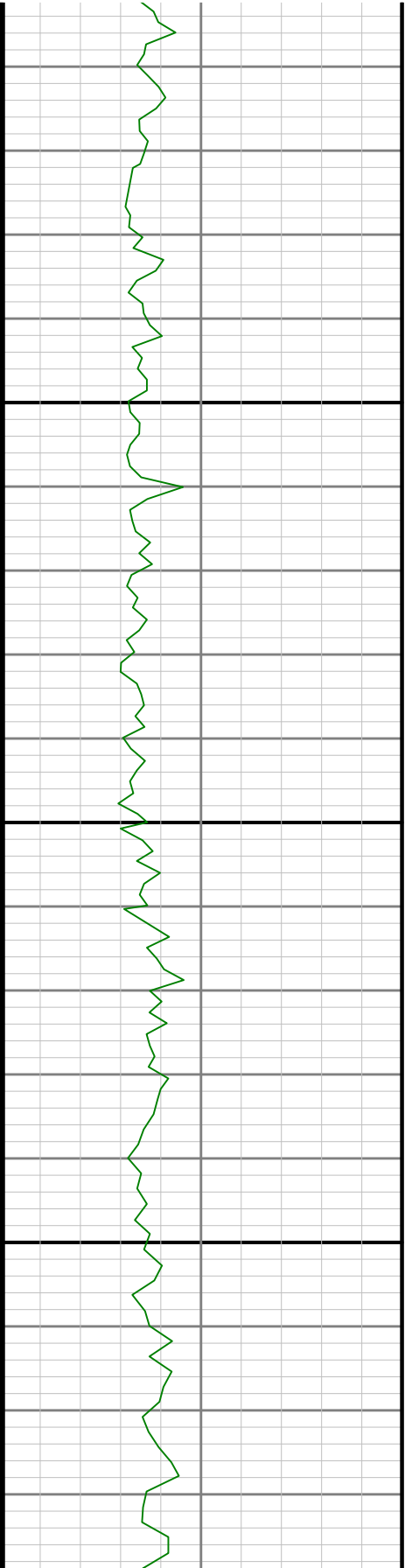


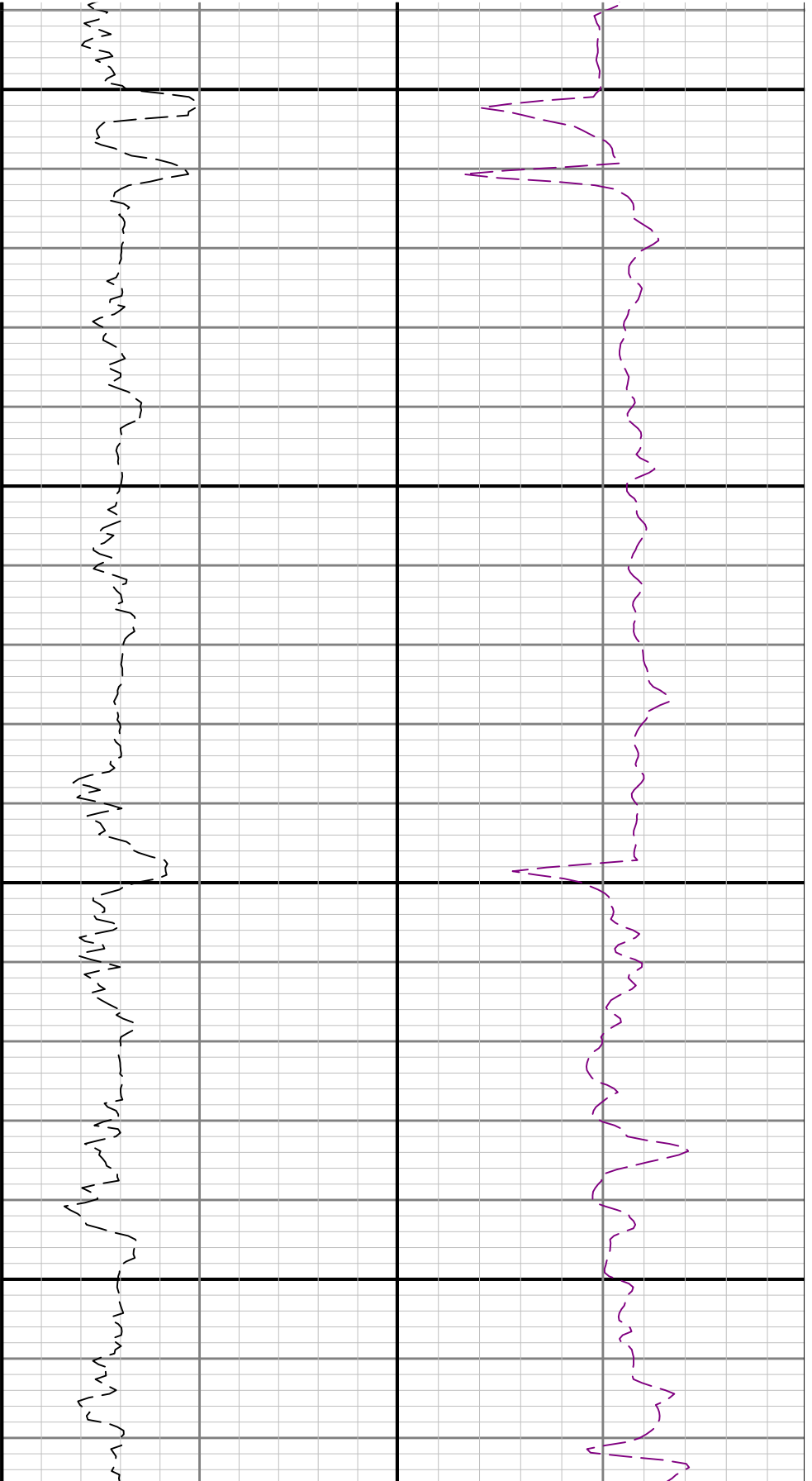




4200

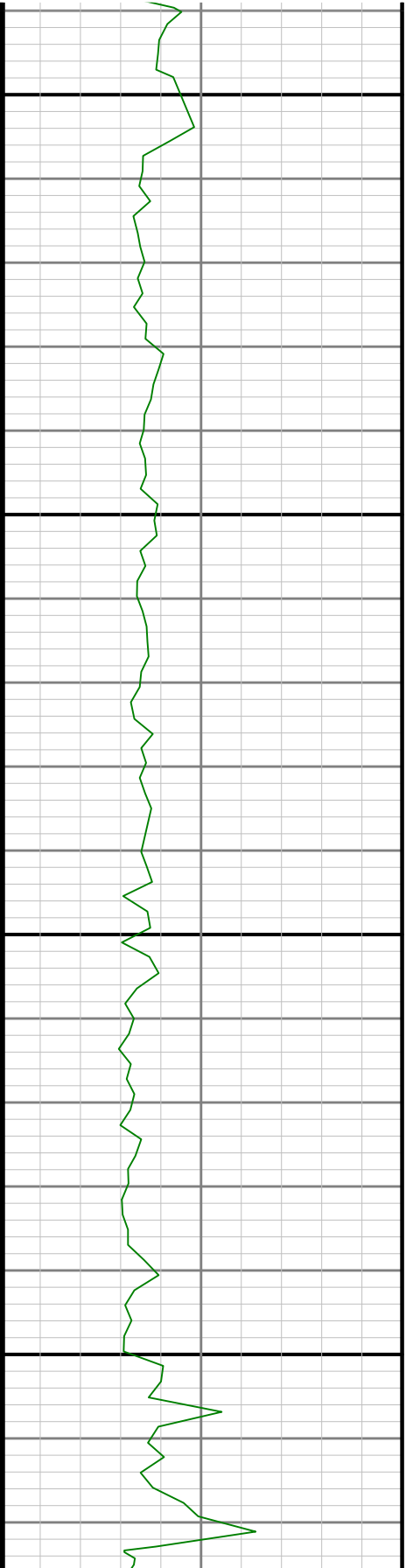
4300

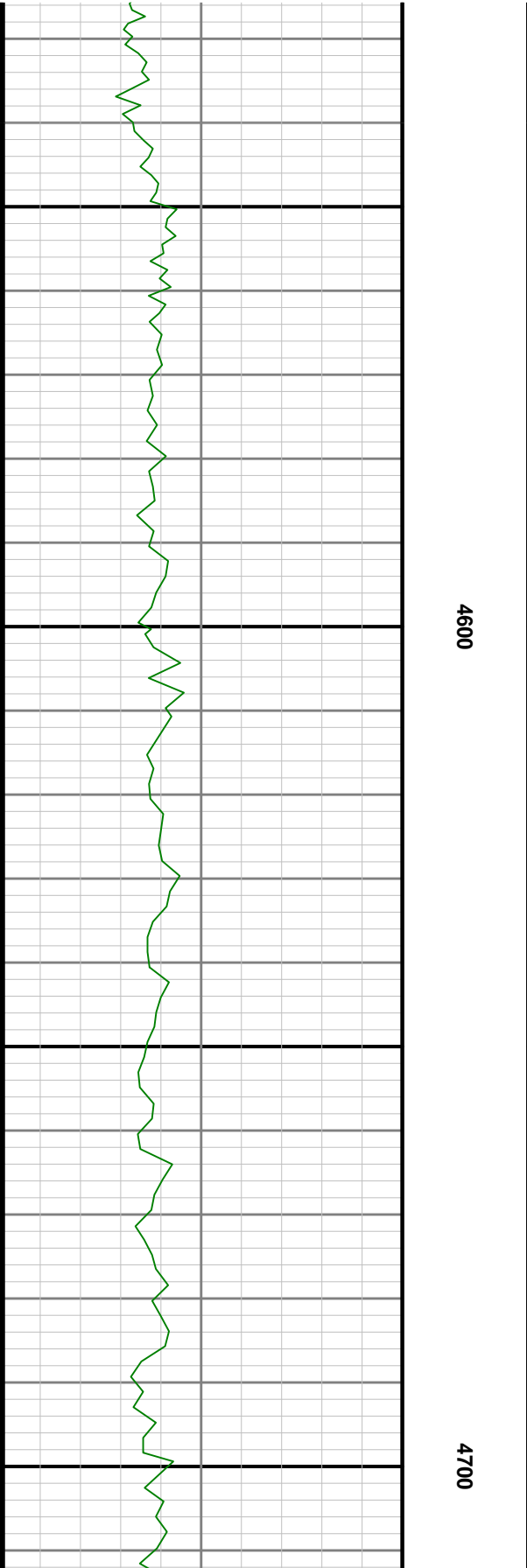
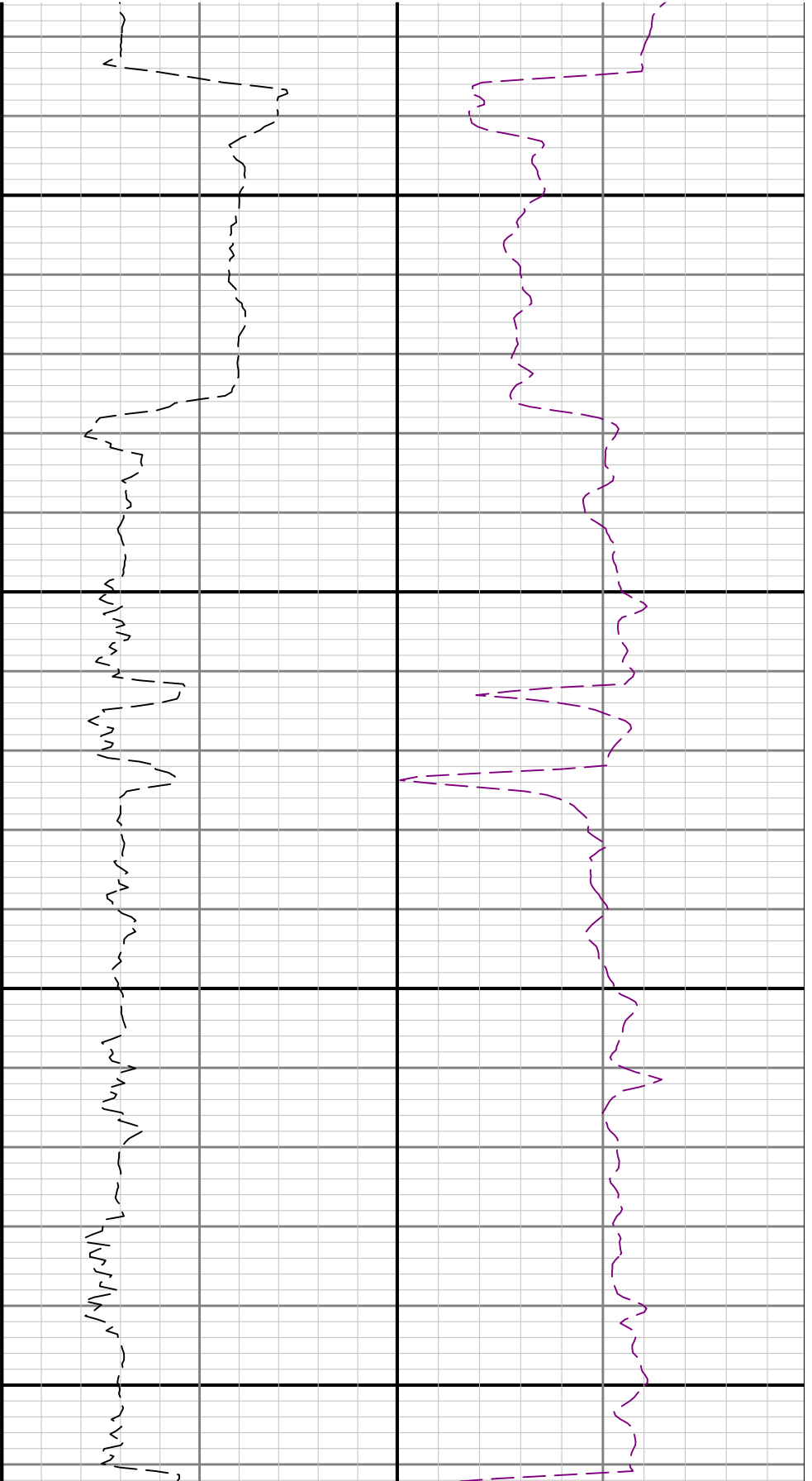


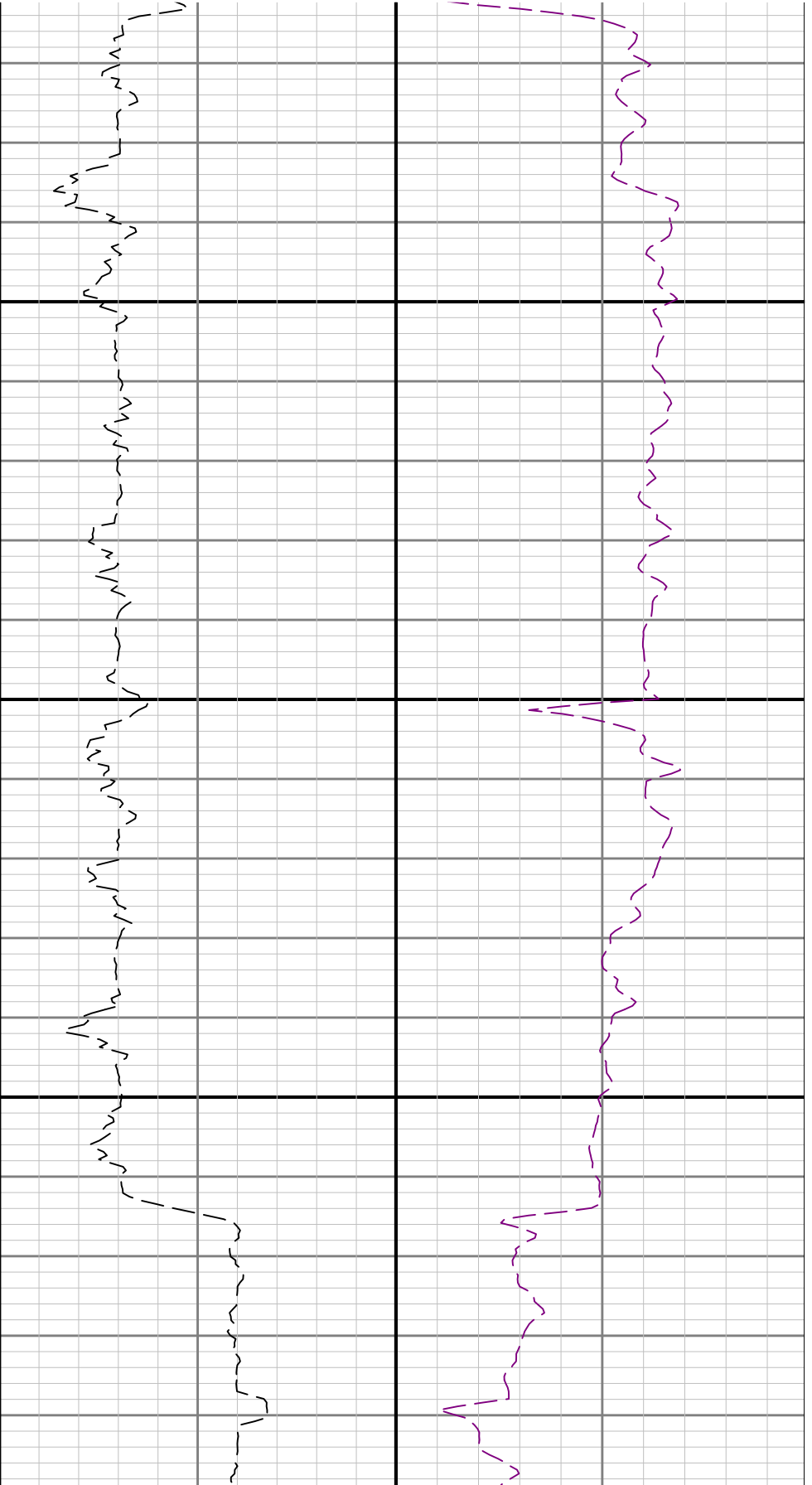


4400

4500

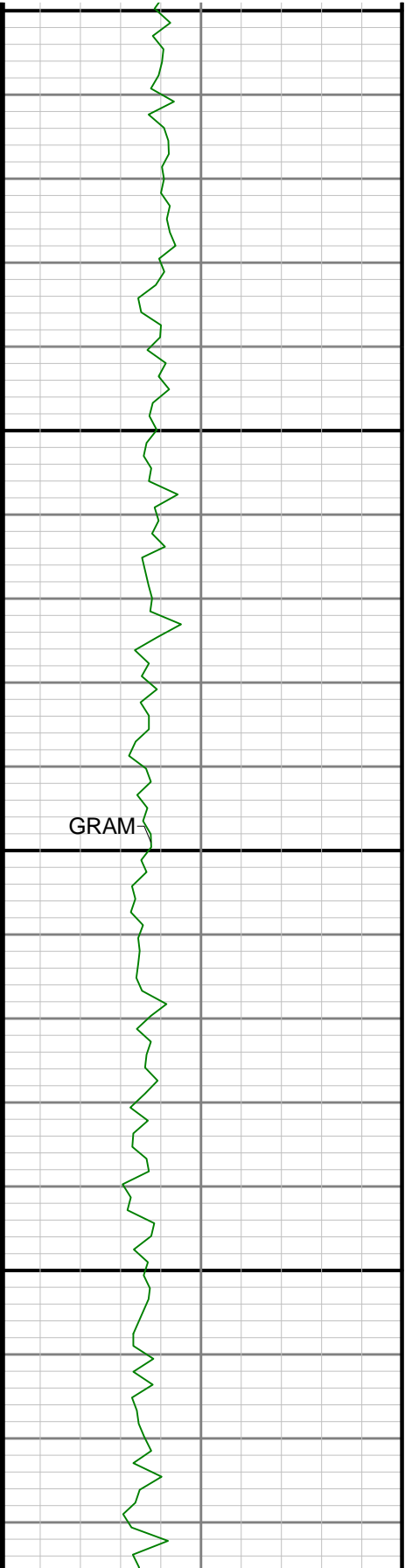






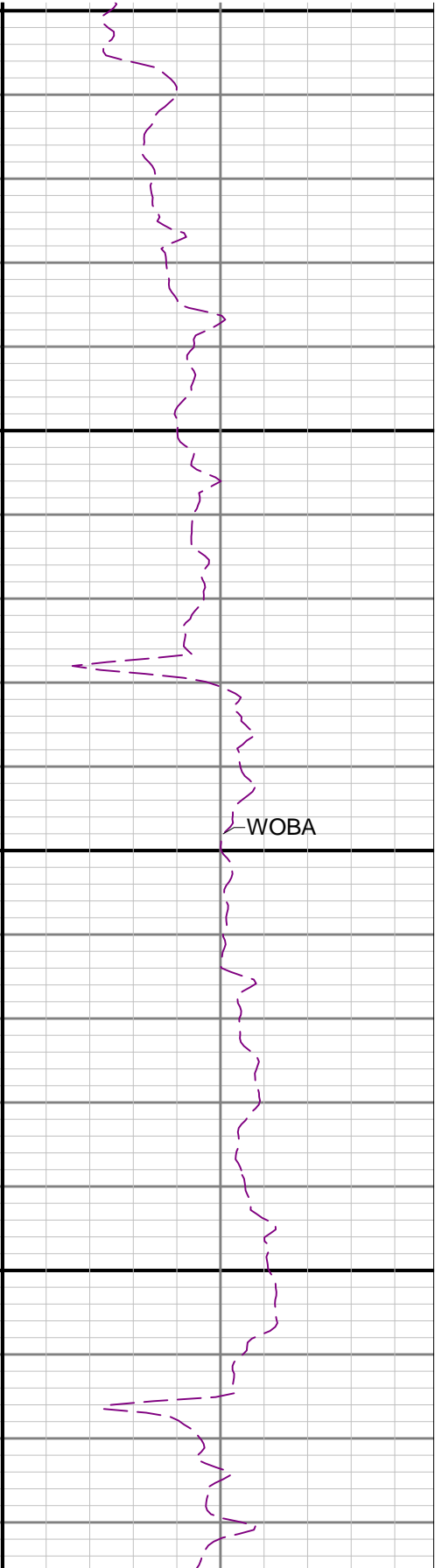
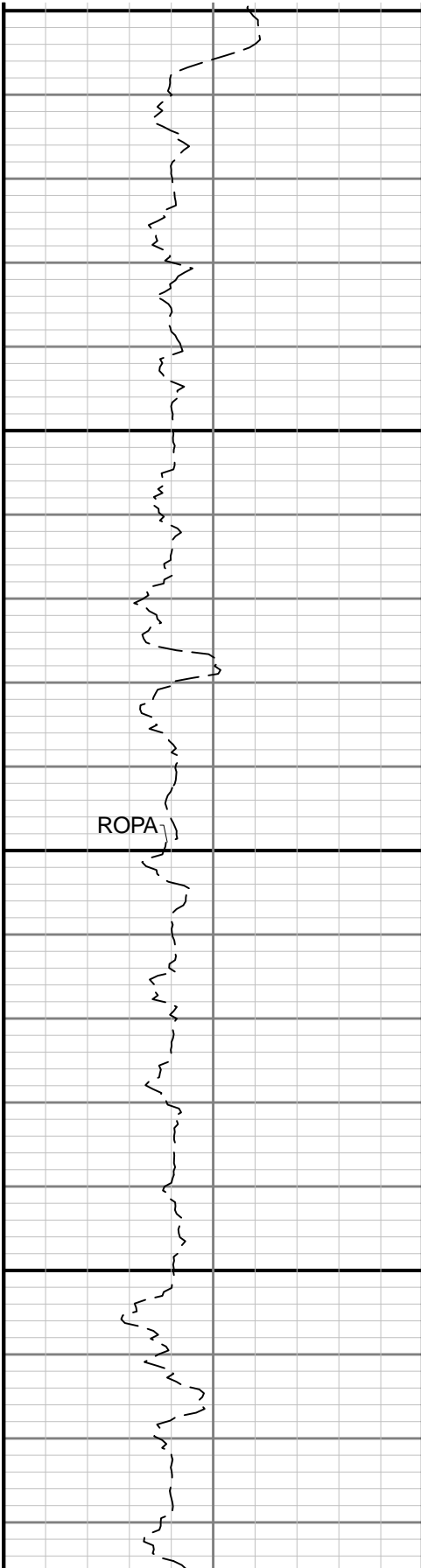
4800

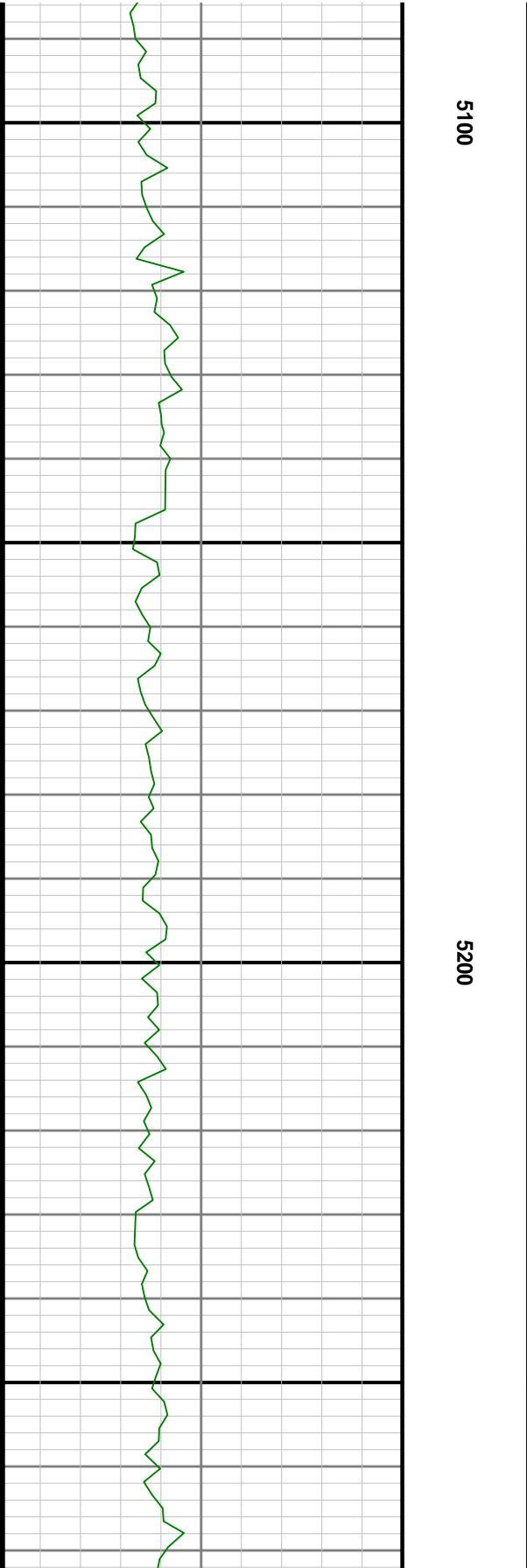
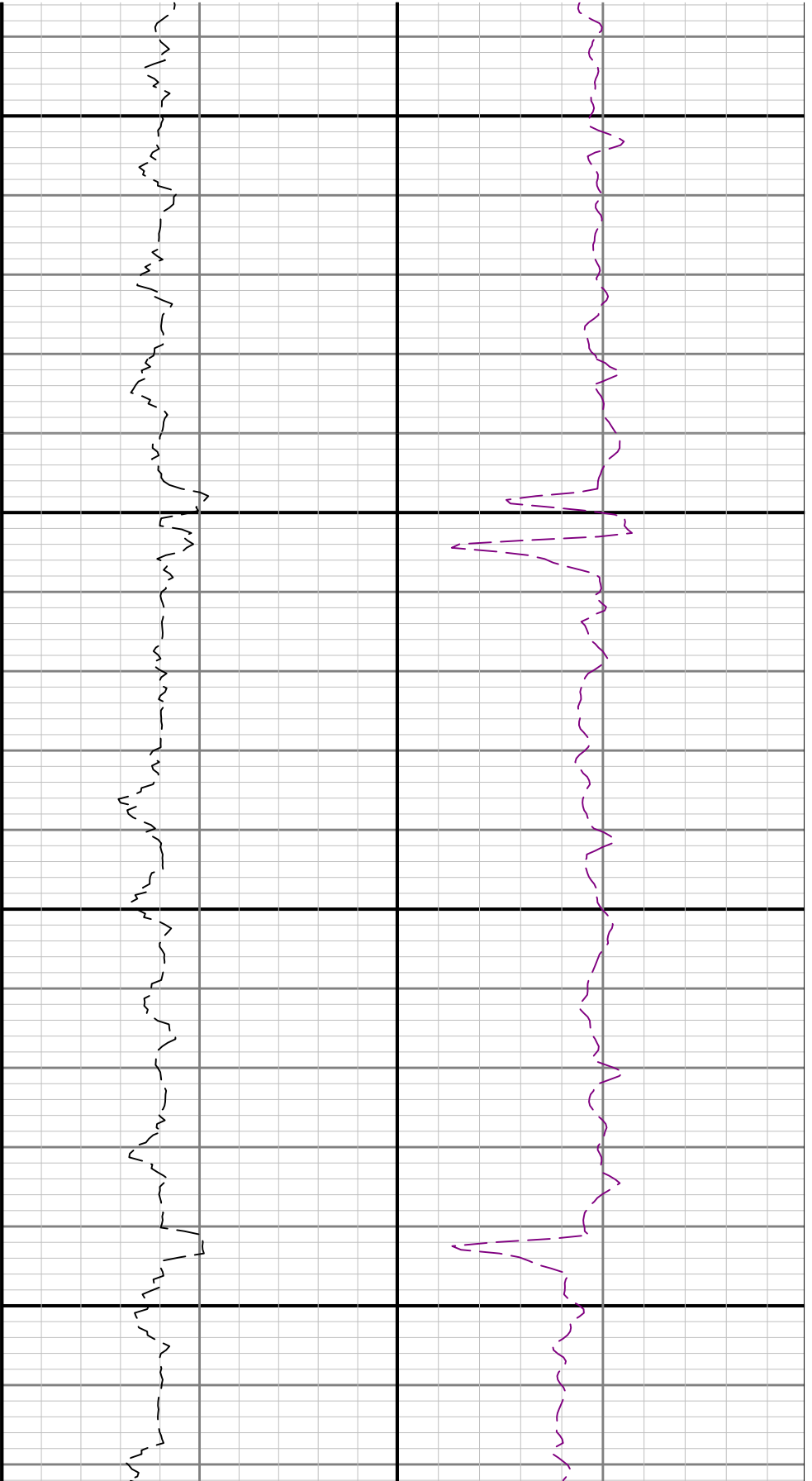
4

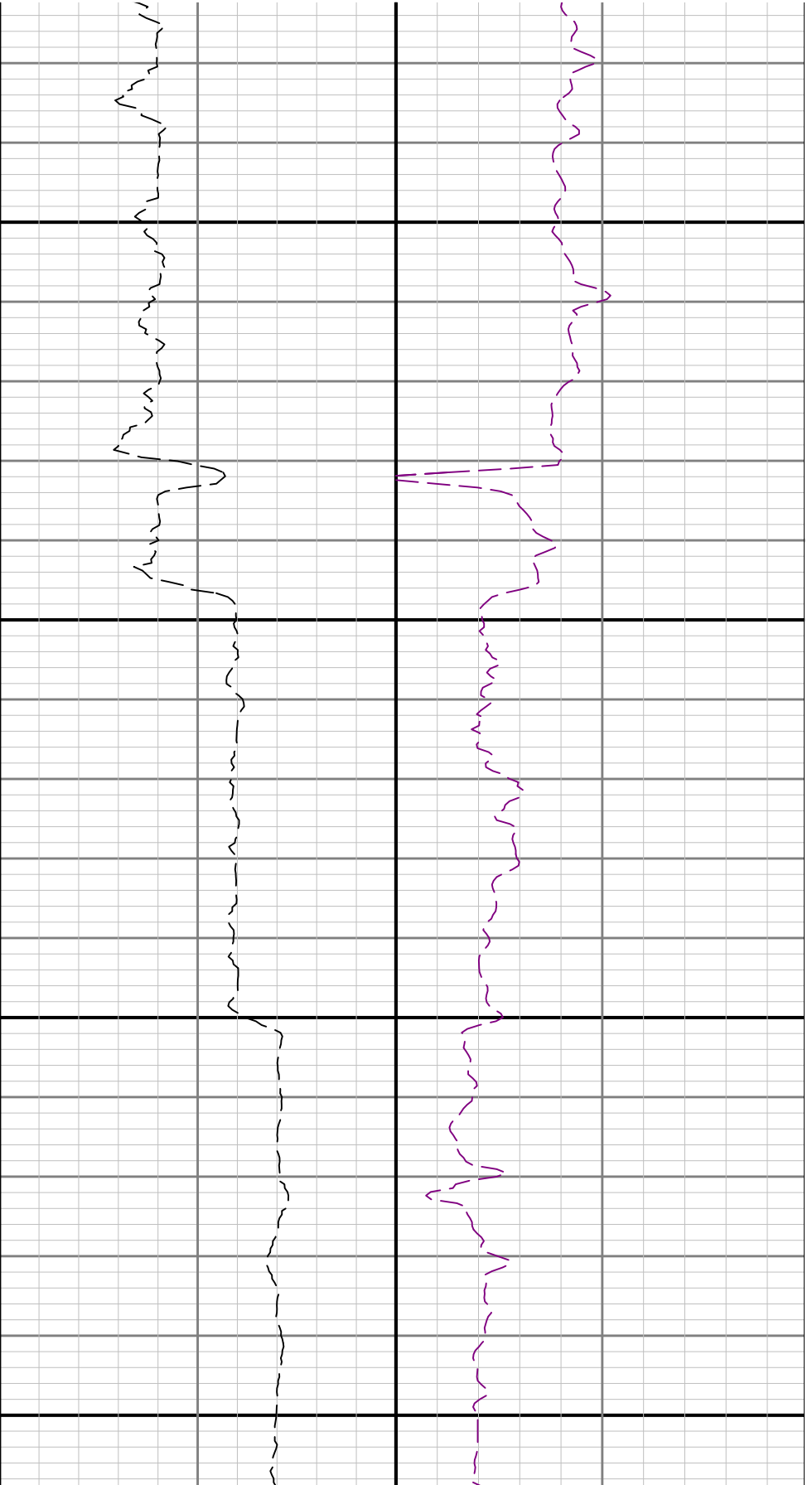


300

5000

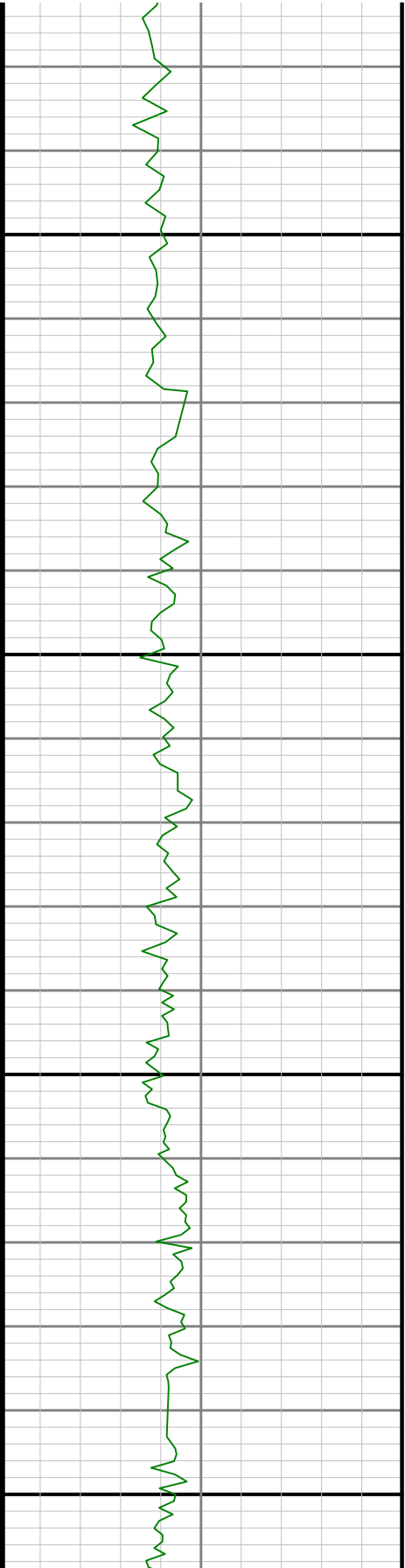


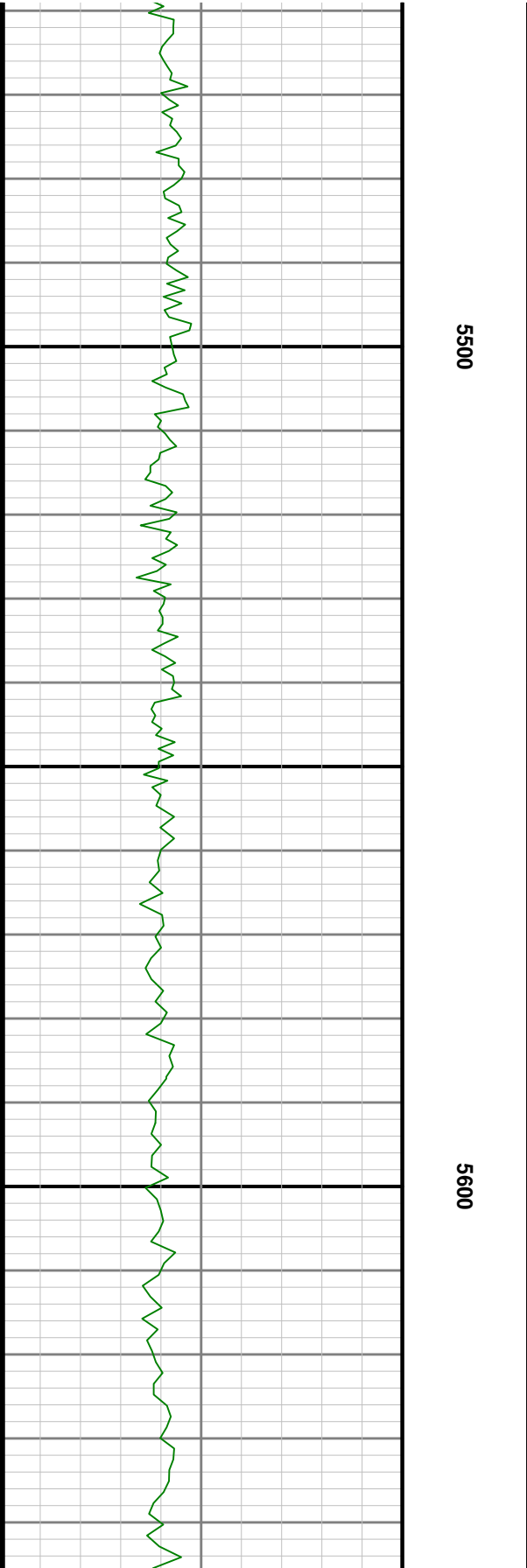
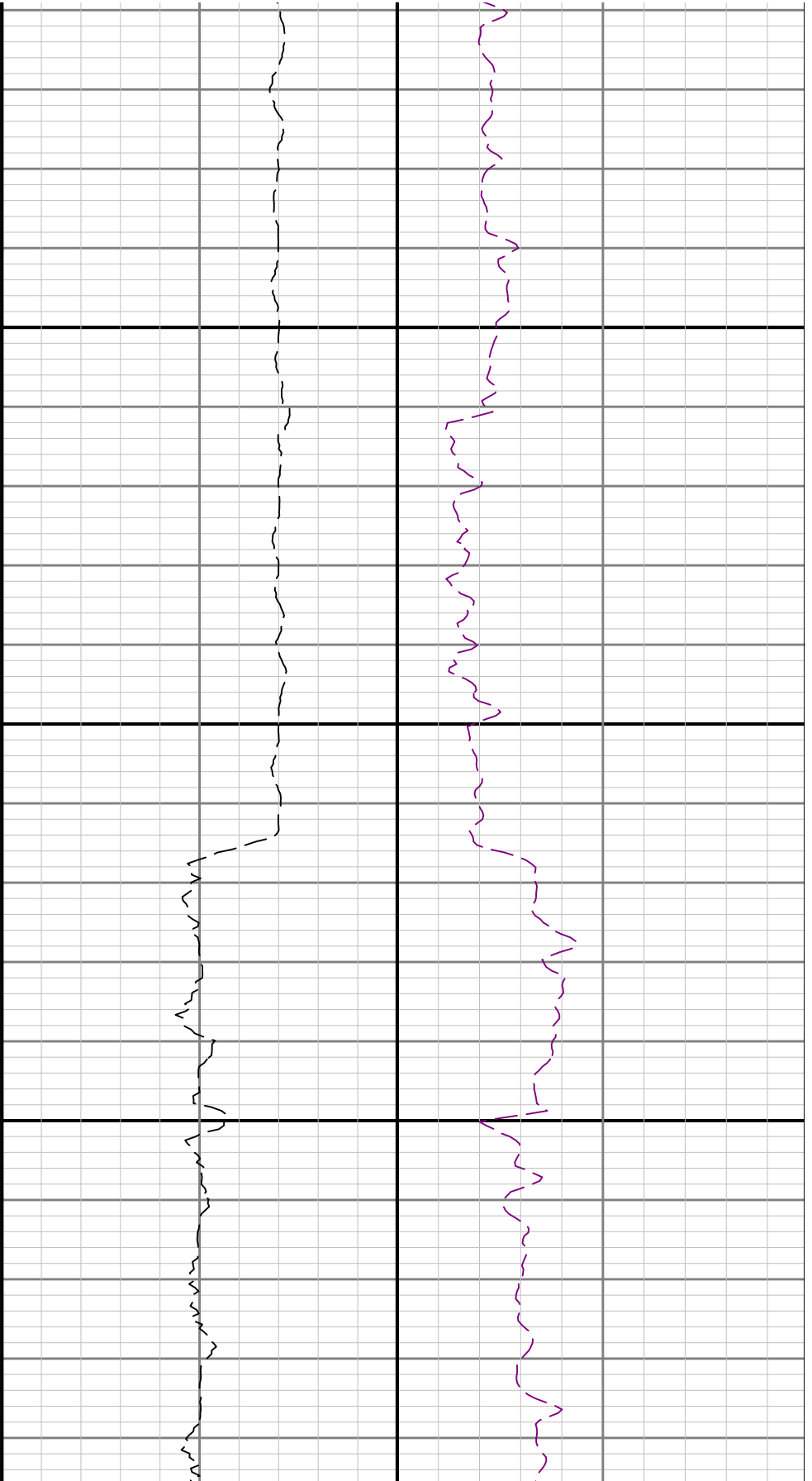


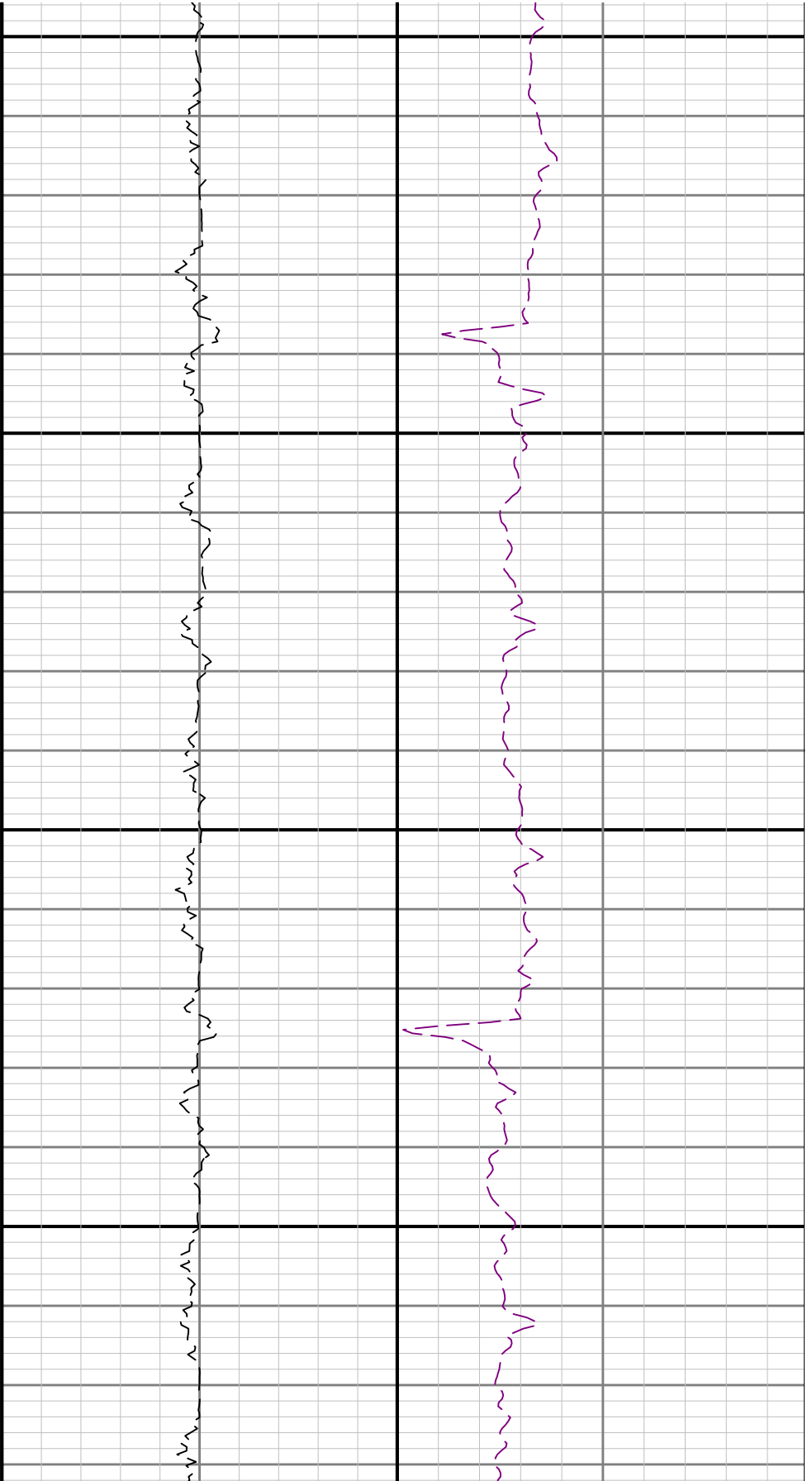


5300

5400

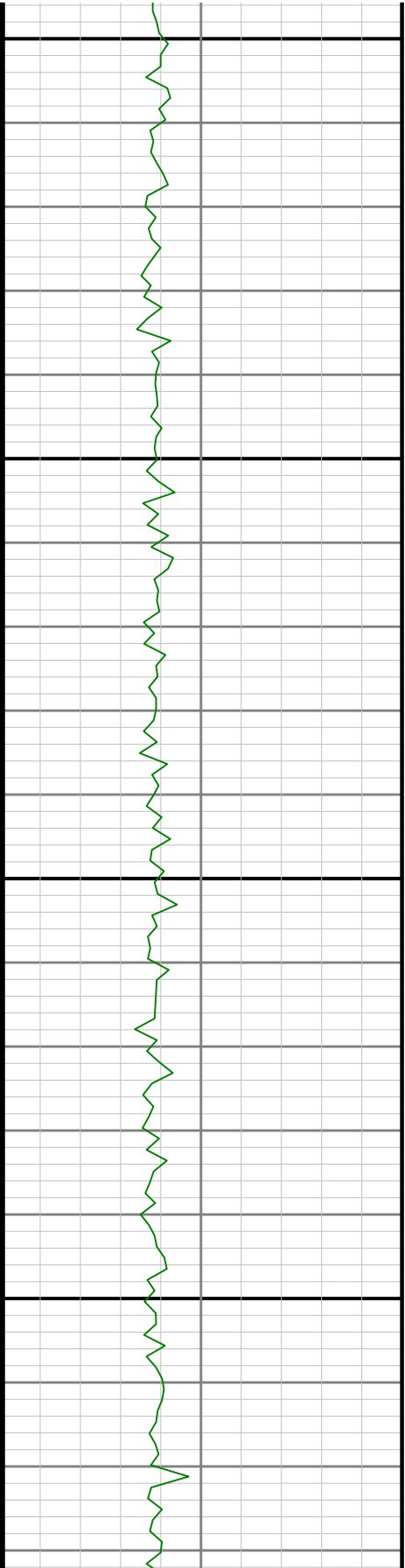


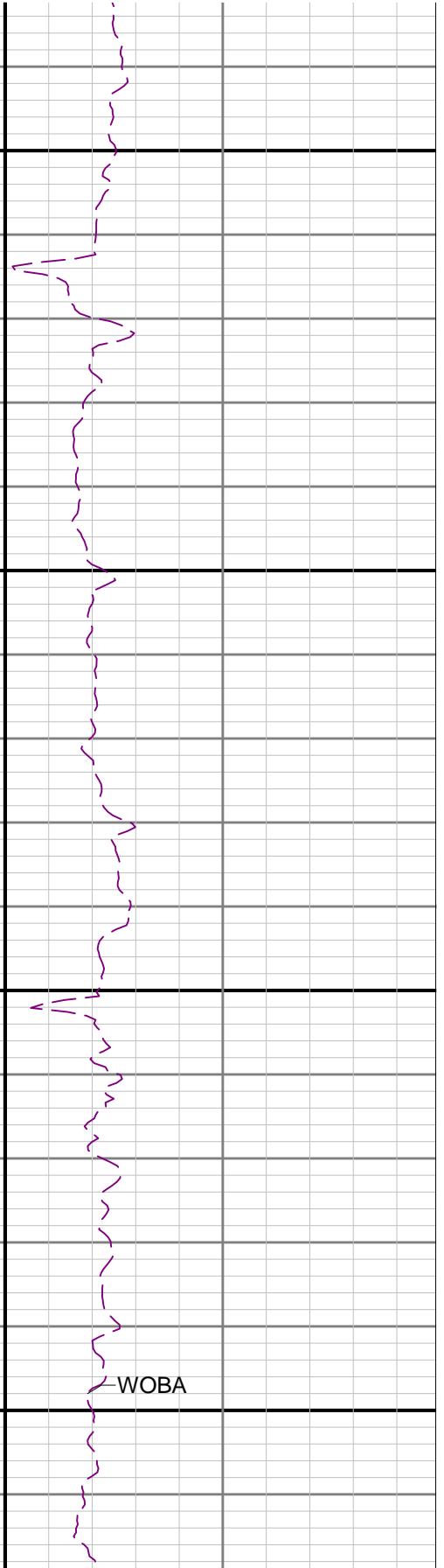
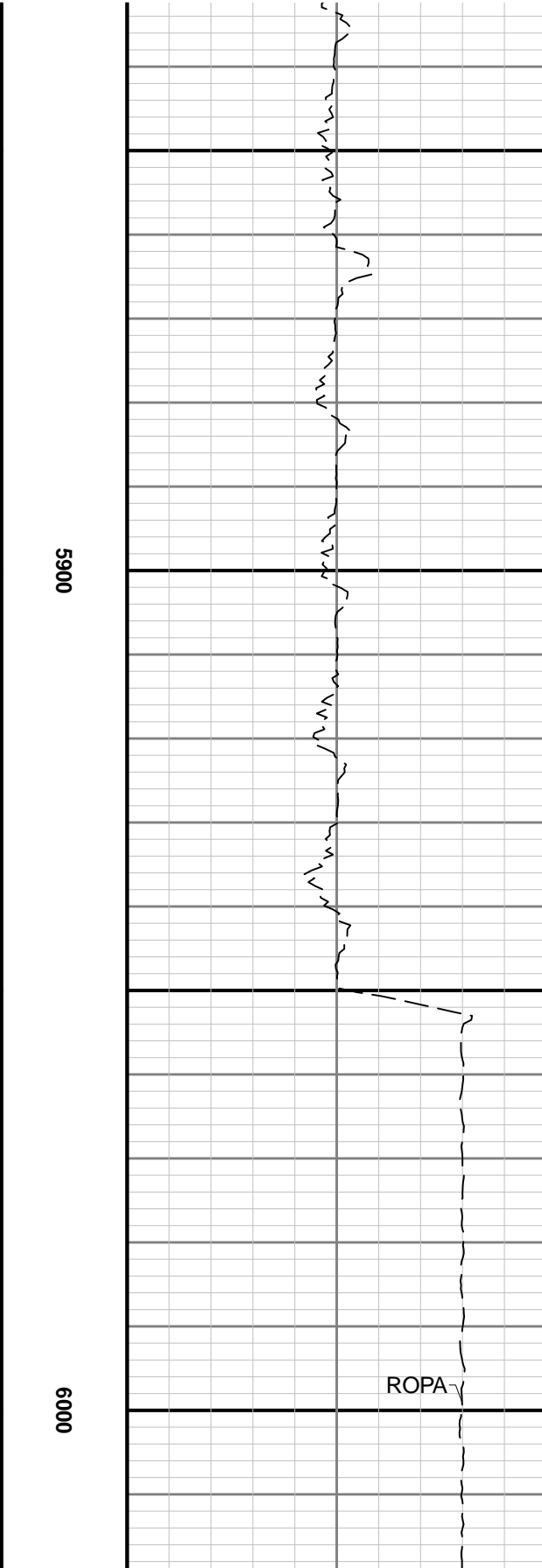
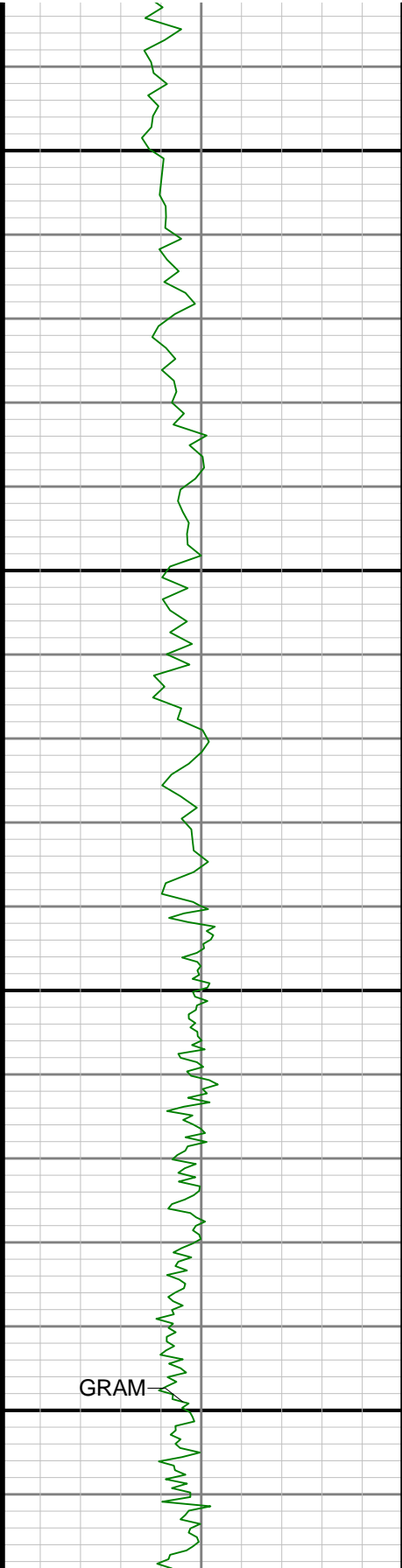


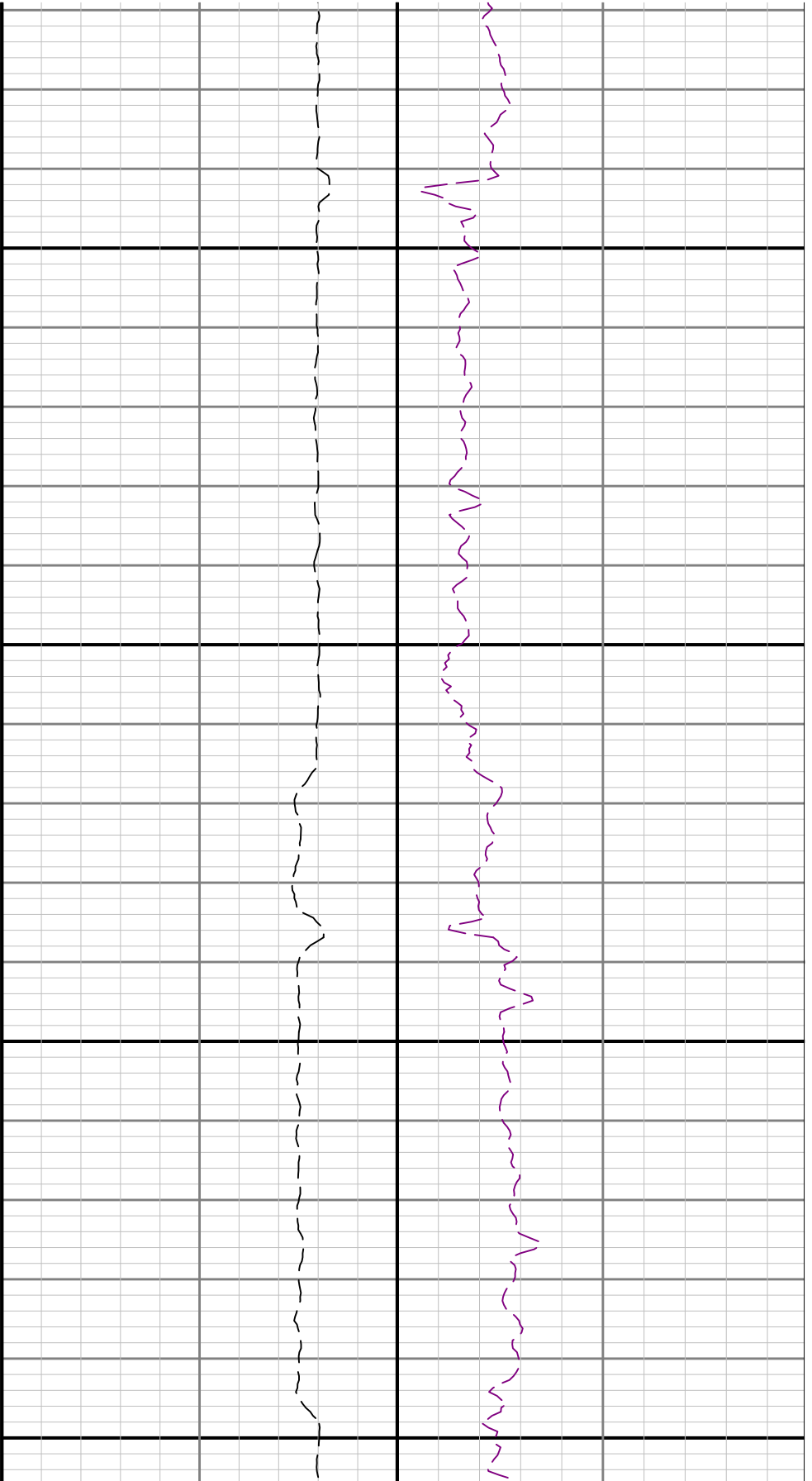


5700

5800

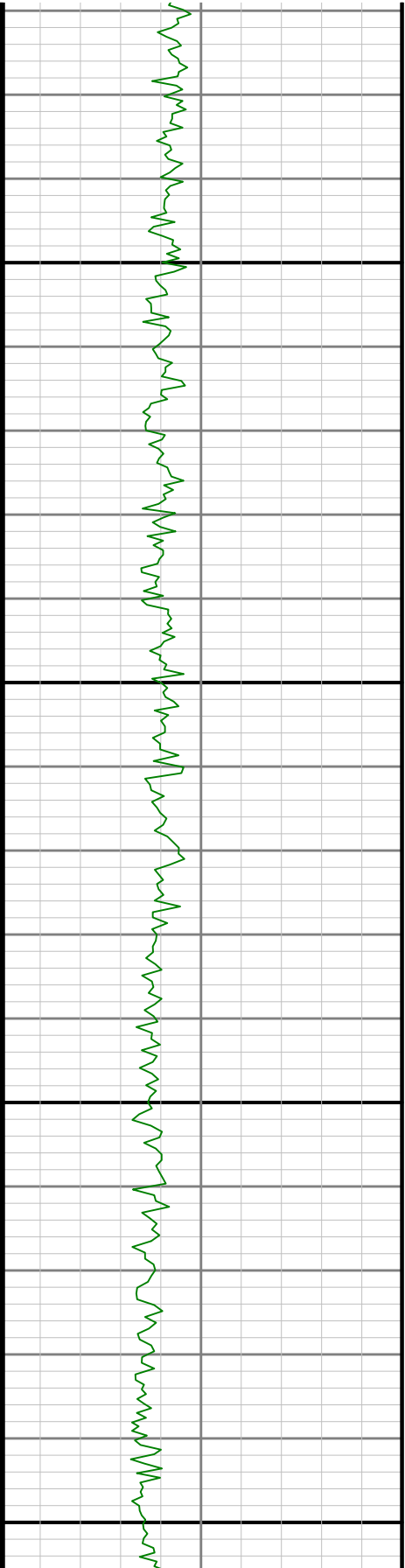


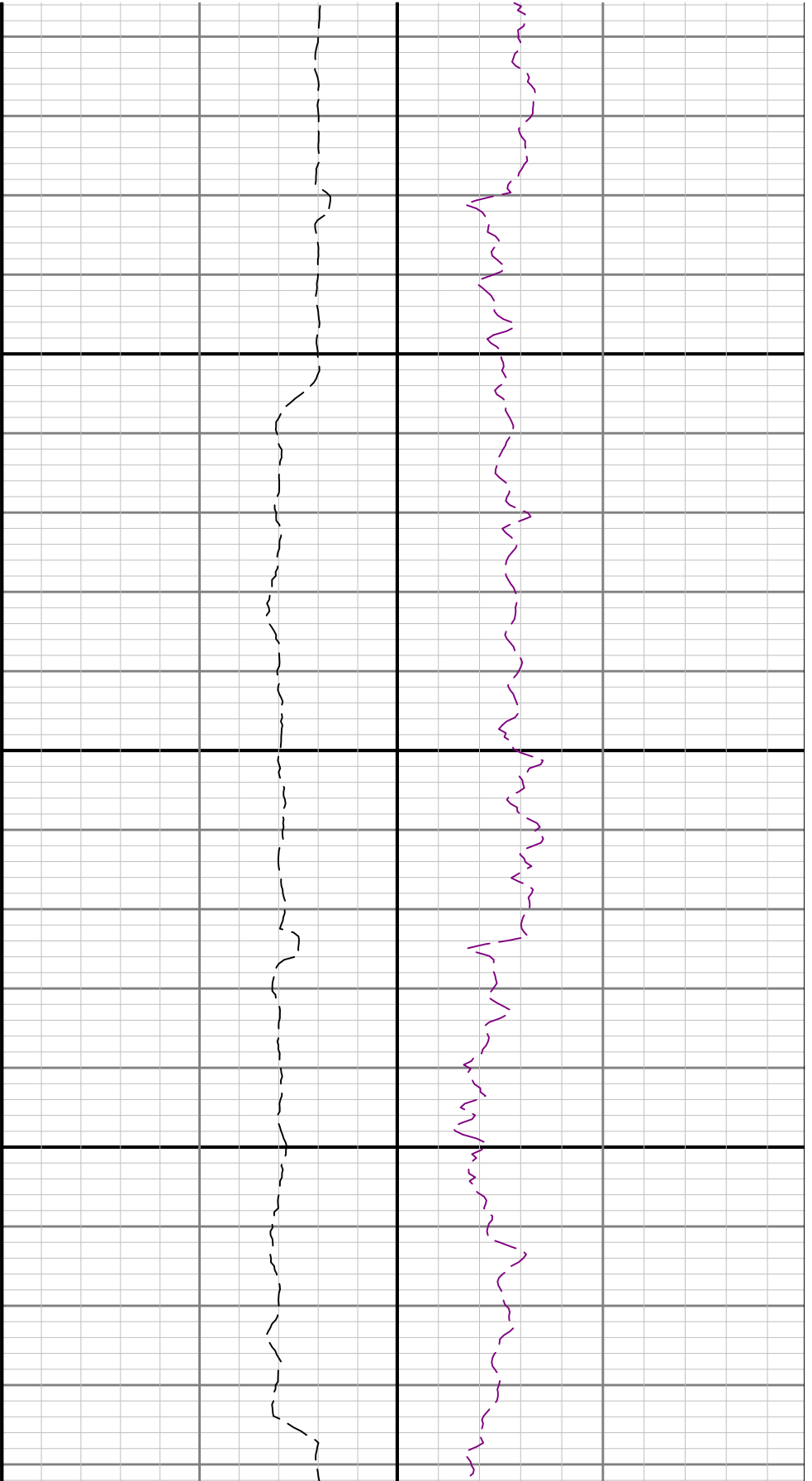




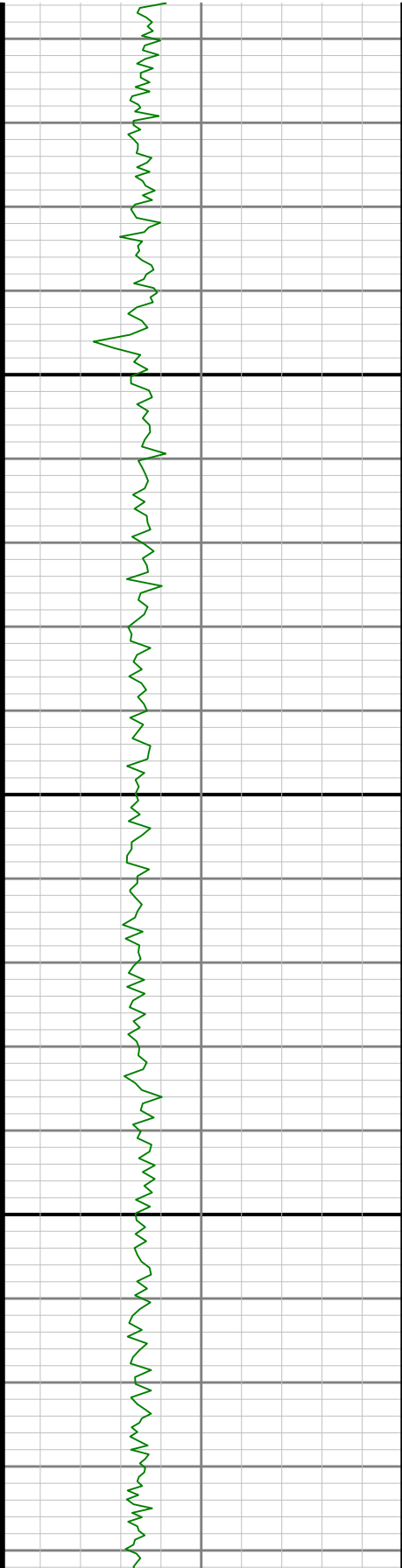
6100

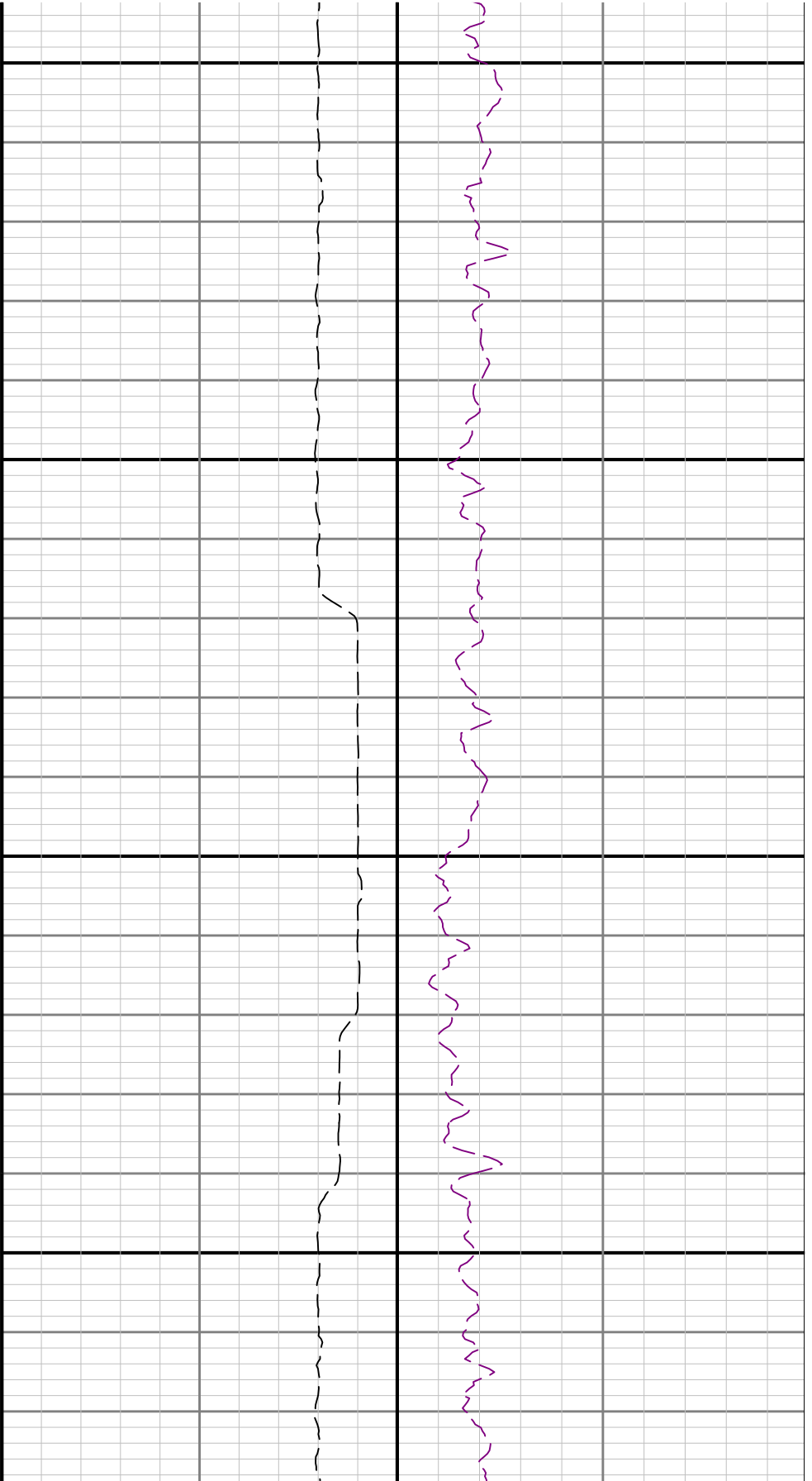
6200





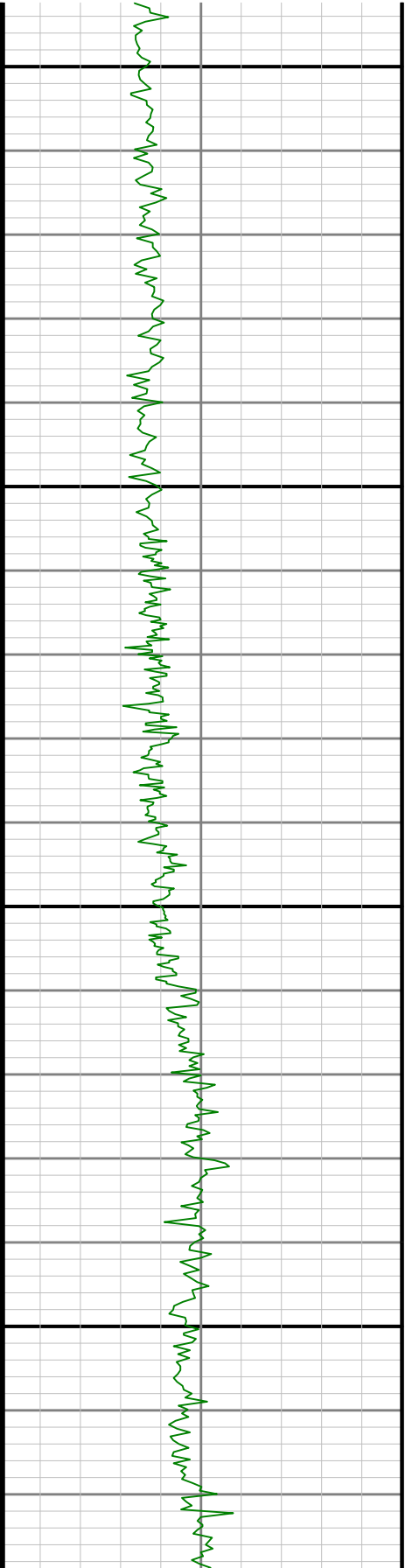
6300

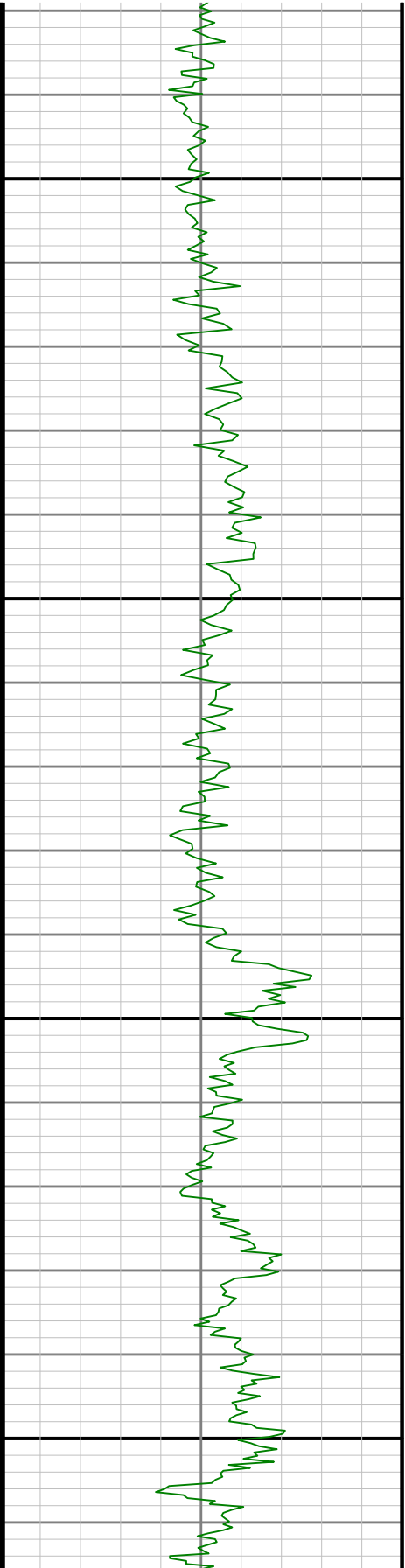




6400

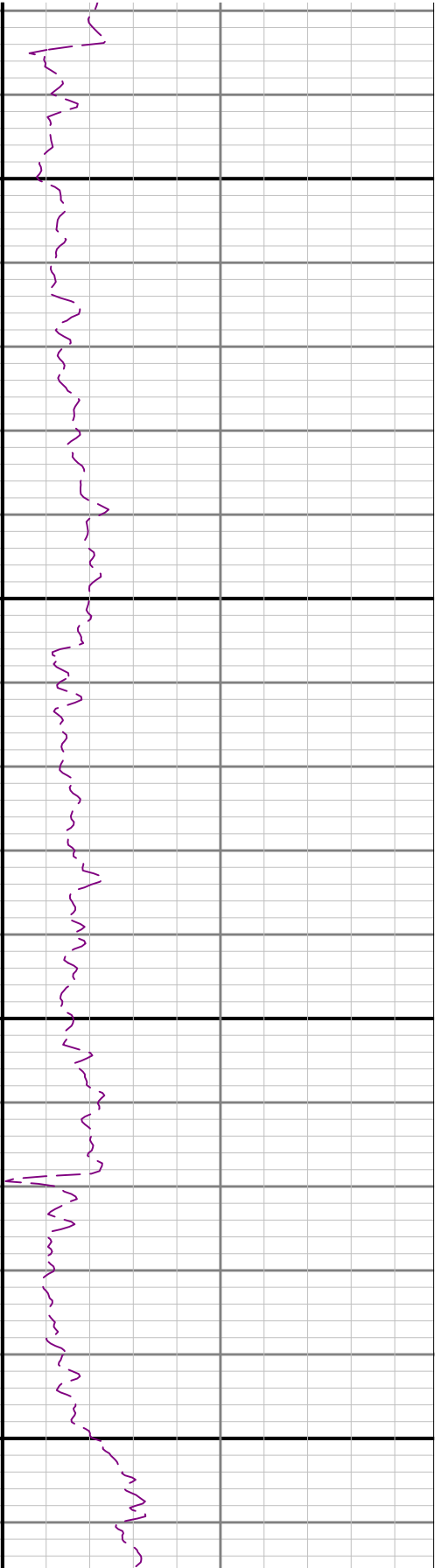
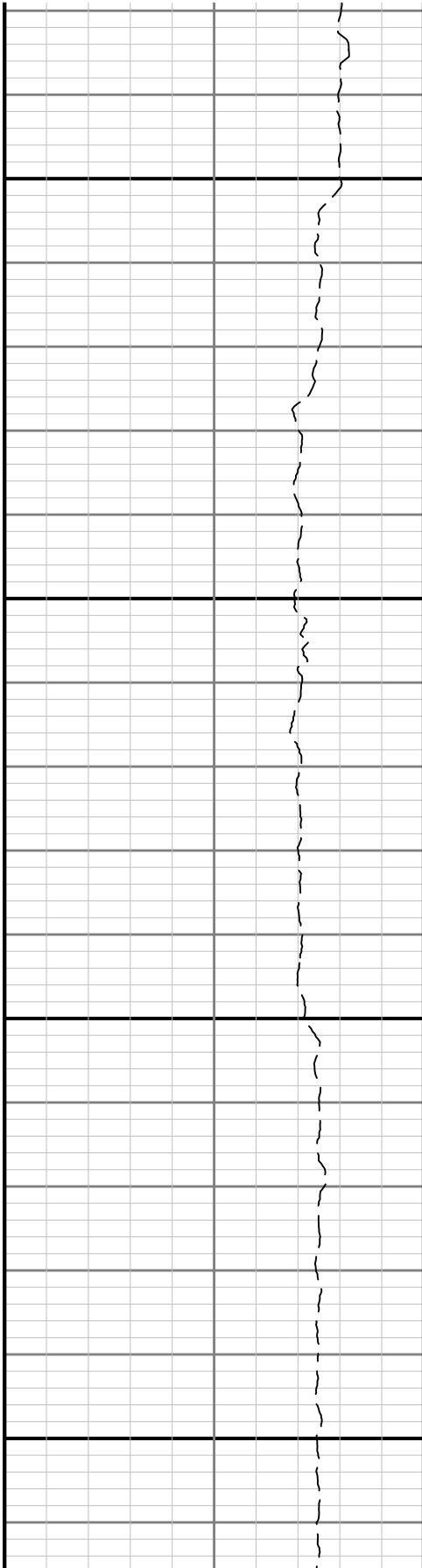
6500

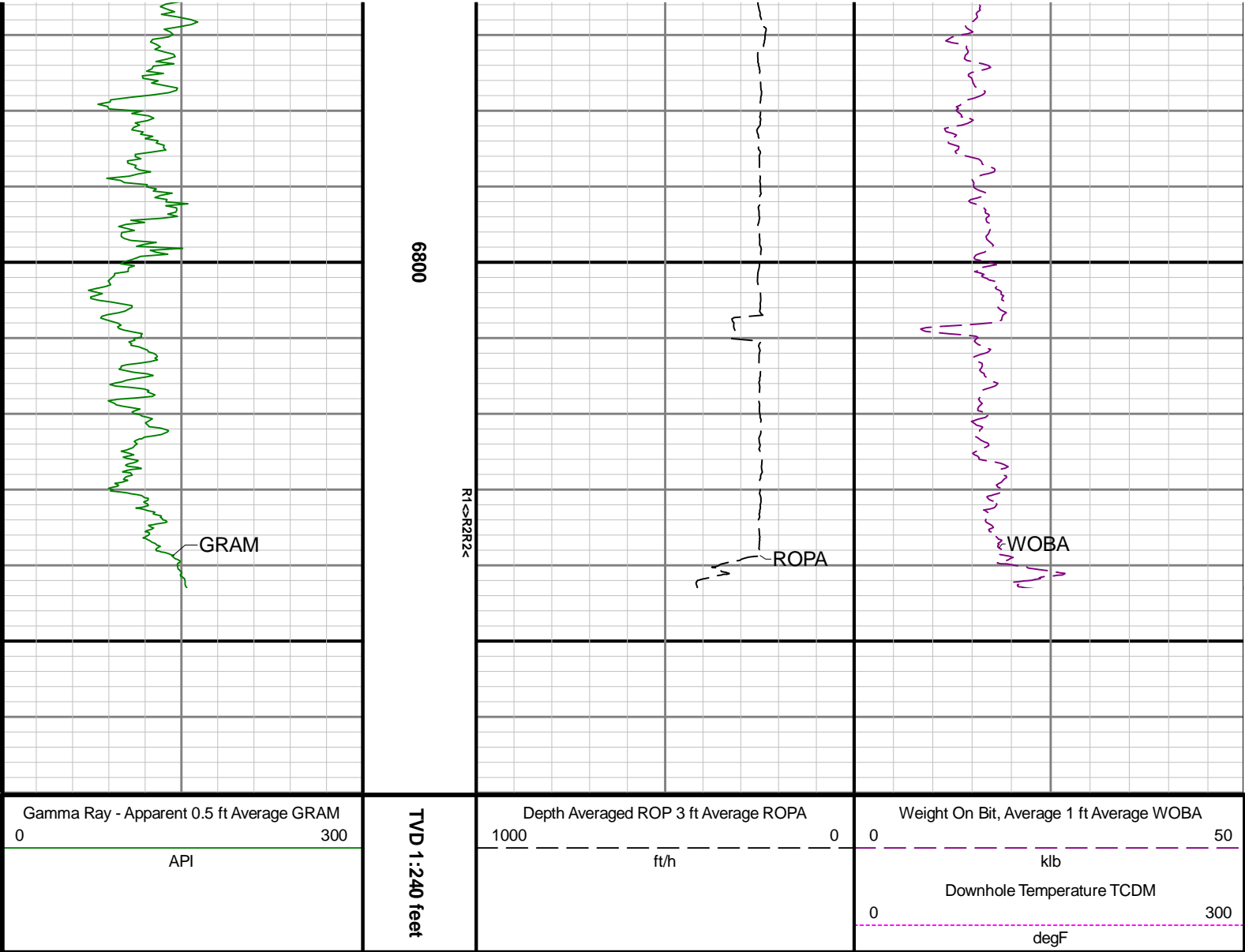




6660

6700





Directional Survey Summary

Latitude:	040° 12' 22.428" N	Longitude:	104° 33' 21.312" W
North Reference:	Grid	Drill Depth Zero:	Rig Floor
Vertical Datum is:	Mean Sea Level	Vertical Datum to DDZ: (ft)	4854.00
Vertical Section North: (ft)	0.00	Vertical Section East: (ft)	0.00
Vertical Section Azimuth: (deg)	359.08		
Grid Convergence: (deg)	-0.61	Magnetic Declination: (deg)	8.09
Total Correction: (deg)	7.48	TVD Calculation Method:	Minimum Curvature
Magnetic Correction:	On	Local Magnetic Field: (nT)	52062
Local Magnetic Dip Angle: (deg)	66.68	Local Gravity Field: (m/s2)	9.801

Tie-In / Projection	Measured Depth (ft)	Inclination (deg)	Azimuth (deg)	Temperature (degF)	North (ft)	East (ft)	True Vertical Depth (ft)	TVD Subsea (ft)	Vertical Section (ft)	Course Length (ft)	Dog Leg Severity (deg/100ft)	Build Rate (deg/100ft)	Turn Rate (deg/100ft)
Tie-In	0.00	0.00	0.00	N/A	0.00	0.00	0.00	-4854.00	0.00	0.00	0.00	0.00	0.00
	84.00	0.24	170.22	N/A	-0.17	0.03	84.00	-4770.00	-0.17	84.00	0.29	0.29	202.64
	177.00	0.31	135.66	N/A	-0.55	0.24	177.00	-4677.00	-0.55	93.00	0.19	0.08	-37.16
	270.00	0.19	314.23	N/A	-0.62	0.30	270.00	-4584.00	-0.62	93.00	0.54	-0.13	192.01
	333.00	0.33	310.09	N/A	-0.43	0.09	333.00	-4521.00	-0.43	63.00	0.22	0.22	-6.57
	426.00	0.55	244.89	N/A	0.10	0.26	426.00	-4426.04	0.10	95.00	0.25	0.24	22.29

		428.00	0.56	341.80	N/A	0.19	-0.26	427.99	-4426.01	0.19	95.00	0.35	0.24	33.38
		522.00	0.25	256.55	N/A	0.58	-0.61	521.99	-4332.01	0.59	94.00	0.63	-0.33	-90.69
		617.00	0.81	290.62	N/A	0.77	-1.44	616.99	-4237.01	0.79	95.00	0.65	0.59	35.86
		711.00	0.25	271.06	N/A	1.00	-2.26	710.98	-4143.02	1.04	94.00	0.62	-0.60	-20.81
		806.00	0.64	228.66	N/A	0.66	-2.87	805.98	-4048.02	0.70	95.00	0.51	0.41	-44.63
		901.00	0.21	176.77	N/A	0.13	-3.26	900.98	-3953.02	0.19	95.00	0.56	-0.45	-54.62
		996.00	0.25	276.71	N/A	-0.02	-3.45	995.98	-3858.02	0.04	95.00	0.37	0.04	105.20
		1091.00	0.76	180.34	N/A	-0.62	-3.66	1090.98	-3763.02	-0.56	95.00	0.87	0.54	-101.44
		1185.00	0.68	232.69	N/A	-1.58	-4.11	1184.97	-3669.03	-1.52	94.00	0.68	-0.09	55.69
		1280.00	0.30	137.22	N/A	-2.11	-4.39	1279.97	-3574.03	-2.04	95.00	0.81	-0.40	-100.49
		1375.00	0.54	168.88	N/A	-2.73	-4.13	1374.96	-3479.04	-2.66	95.00	0.34	0.25	33.33
		1470.00	0.57	263.41	N/A	-3.22	-4.52	1469.96	-3384.04	-3.15	95.00	0.86	0.03	99.51
		1564.00	0.27	271.68	N/A	-3.27	-5.20	1563.96	-3290.04	-3.19	94.00	0.32	-0.32	8.80
		1659.00	0.40	168.87	N/A	-3.59	-5.36	1658.96	-3195.04	-3.50	95.00	0.56	0.14	-108.22
		1754.00	0.33	205.07	N/A	-4.16	-5.42	1753.96	-3100.04	-4.08	95.00	0.25	-0.07	38.11
		1848.00	0.19	263.44	N/A	-4.43	-5.69	1847.95	-3006.05	-4.33	94.00	0.30	-0.15	62.10
Tie-In		1906.00	0.79	303.44	N/A	-4.22	-6.11	1905.95	-2948.05	-4.12	58.00	1.13	1.03	68.97
		1994.00	1.58	305.77	101.4	-3.17	-7.60	1993.93	-2860.07	-3.05	88.00	0.90	0.90	2.65
		2089.00	2.50	228.30	104.1	-3.79	-10.21	2088.89	-2765.11	-3.62	95.00	2.79	0.97	-81.55
		2184.00	5.15	209.77	109.5	-8.87	-13.88	2183.67	-2670.33	-8.64	95.00	3.04	2.79	-19.51
		2278.00	7.84	201.97	114.9	-18.48	-18.37	2277.06	-2576.94	-18.18	94.00	3.01	2.86	-8.30
		2373.00	9.68	193.96	114.9	-32.24	-22.73	2370.95	-2483.05	-31.87	95.00	2.32	1.94	-8.43
		2467.00	10.33	190.39	112.2	-48.20	-26.15	2463.52	-2390.48	-47.77	94.00	0.96	0.69	-3.80
		2562.00	11.41	187.48	114.9	-65.89	-28.91	2556.82	-2297.18	-65.42	95.00	1.27	1.14	-3.06
		2657.00	13.63	179.40	123.0	-86.41	-30.02	2649.56	-2204.44	-85.91	95.00	2.97	2.34	-8.51
		2752.00	16.63	175.49	125.7	-111.16	-28.83	2741.26	-2112.74	-110.68	95.00	3.33	3.16	-4.12
		2846.00	21.36	176.97	125.7	-141.68	-26.87	2830.11	-2023.89	-141.23	94.00	5.06	5.03	1.57
		2941.00	21.46	172.89	131.1	-176.20	-23.80	2918.56	-1935.44	-175.80	95.00	1.57	0.11	-4.29
		3131.00	20.91	177.00	133.8	-244.55	-17.73	3095.73	-1758.27	-244.24	190.00	0.83	-0.29	2.16
		3225.00	20.88	179.57	133.8	-278.06	-16.72	3183.55	-1670.45	-277.75	94.00	0.98	-0.03	2.73
		3320.00	20.67	179.37	133.8	-311.75	-16.41	3272.38	-1581.62	-311.45	95.00	0.23	-0.22	-0.21
		3415.00	16.60	177.53	136.5	-342.09	-15.64	3362.38	-1491.62	-341.79	95.00	4.33	-4.28	-1.94
		3509.00	17.05	183.56	136.5	-369.26	-15.92	3452.36	-1401.64	-368.96	94.00	1.92	0.48	6.41
		3604.00	19.01	196.90	136.5	-397.98	-21.28	3542.73	-1311.27	-397.59	95.00	4.80	2.06	14.04
		3699.00	19.44	202.25	141.9	-427.42	-31.77	3632.44	-1221.56	-426.85	95.00	1.91	0.45	5.63
		3793.00	21.04	202.73	141.9	-457.46	-44.21	3720.63	-1133.37	-456.69	94.00	1.71	1.70	0.51
		3888.00	20.89	194.56	141.9	-489.59	-55.06	3809.36	-1044.64	-488.64	95.00	3.08	-0.16	-8.60
		3983.00	21.13	183.42	141.9	-523.09	-60.34	3898.08	-955.92	-522.05	95.00	4.21	0.25	-11.73
		4077.00	20.86	176.58	144.6	-556.71	-60.36	3985.85	-868.15	-555.67	94.00	2.62	-0.29	-7.28
		4172.00	20.69	174.53	144.6	-590.30	-57.75	4074.68	-779.32	-589.30	95.00	0.79	-0.18	-2.16
		4266.00	21.09	174.33	144.6	-623.66	-54.49	4162.50	-691.50	-622.71	94.00	0.43	0.43	-0.21
		4361.00	21.45	176.24	147.3	-658.00	-51.66	4251.03	-602.97	-657.09	95.00	0.82	0.38	2.01
		4456.00	21.84	177.01	150.0	-692.98	-49.60	4339.33	-514.67	-692.10	95.00	0.51	0.41	0.81
		4550.00	21.48	175.08	150.0	-727.59	-47.22	4426.69	-427.31	-726.74	94.00	0.85	-0.38	-2.05
		4645.00	22.11	180.16	152.7	-762.80	-45.77	4514.91	-339.09	-761.97	95.00	2.09	0.66	5.35
		4740.00	21.15	176.64	152.7	-797.79	-44.82	4603.22	-250.78	-796.97	95.00	1.70	-1.01	-3.71
		4834.00	21.45	173.67	155.4	-831.81	-41.93	4690.81	-163.19	-831.03	94.00	1.19	0.32	-3.16
		4929.00	19.83	176.67	158.1	-865.16	-39.08	4779.71	-74.29	-864.42	95.00	2.04	-1.71	3.16
		5024.00	19.70	174.39	158.1	-897.18	-36.58	4869.11	15.11	-896.48	95.00	0.82	-0.14	-2.40
		5119.00	20.37	175.45	160.8	-929.60	-33.70	4958.36	104.36	-928.94	95.00	0.80	0.71	1.12
		5213.00	21.85	174.94	160.8	-963.33	-30.86	5046.05	192.05	-962.71	94.00	1.59	1.57	-0.54
		5308.00	21.25	176.27	163.5	-998.12	-28.18	5134.41	280.41	-997.54	95.00	0.81	-0.63	1.40
		5403.00	21.45	174.29	163.5	-1032.59	-25.33	5222.89	368.89	-1032.05	95.00	0.79	0.21	-2.08
		5498.00	18.93	174.69	166.2	-1065.22	-22.18	5312.05	458.05	-1064.73	95.00	2.66	-2.65	0.42
		5592.00	17.23	181.64	166.2	-1094.32	-21.16	5401.41	547.41	-1093.84	94.00	2.92	-1.81	7.39
		5687.00	20.11	180.38	166.2	-1124.73	-21.68	5491.41	637.41	-1124.23	95.00	3.06	3.03	-1.33
		5781.00	21.64	180.33	166.2	-1158.22	-21.88	5579.23	725.23	-1157.72	94.00	1.63	1.63	-0.05
		5876.00	21.64	180.67	168.9	-1193.25	-22.19	5667.54	813.54	-1192.74	95.00	0.13	-0.00	0.36
		5971.00	22.06	181.49	171.6	-1228.60	-22.86	5755.71	901.71	-1228.08	95.00	0.55	0.44	0.86
		6065.00	20.77	181.24	171.6	-1262.91	-23.68	5843.22	989.22	-1262.37	94.00	1.38	-1.37	-0.27
		6160.00	21.06	182.21	171.6	-1296.81	-24.70	5931.96	1077.96	-1296.24	95.00	0.48	0.31	1.02
		6254.00	17.31	185.78	171.6	-1327.61	-26.76	6020.73	1166.73	-1327.01	94.00	4.18	-3.99	3.80
		6349.00	9.13	196.54	174.3	-1348.94	-30.34	6113.15	1259.15	-1348.28	95.00	8.96	-8.61	11.33

		6542.00	8.78	753.54	174.6	1818.94	33.34	8742.78	1233.78	1818.82	88.38	8.38	8.37	7.93
		6444.00	2.72	273.53	177.0	-1356.04	-34.74	6207.68	1353.68	-1355.30	95.00	9.39	-6.75	81.04
		6539.00	8.99	359.94	179.7	-1348.46	-37.00	6302.25	1448.25	-1347.69	95.00	9.71	6.60	90.96
		6634.00	15.79	1.12	179.7	-1328.09	-36.76	6394.98	1540.98	-1327.33	95.00	7.16	7.16	1.24
		6728.00	23.30	346.74	179.7	-1297.15	-40.78	6483.55	1629.55	-1296.32	94.00	9.43	7.99	-15.30
		6823.00	34.27	342.77	196.0	-1253.17	-53.05	6566.69	1712.69	-1252.16	95.00	11.72	11.55	-4.18
		6918.00	42.97	346.43	182.5	-1196.04	-68.60	6640.86	1786.86	-1194.78	95.00	9.46	9.16	3.85
		7012.00	50.34	352.14	185.2	-1128.93	-81.09	6705.36	1851.36	-1127.48	94.00	8.99	7.84	6.07
		7107.00	59.68	355.64	187.9	-1051.64	-89.23	6759.79	1905.79	-1050.07	95.00	10.28	9.83	3.68
		7202.00	68.77	356.78	190.6	-966.36	-94.84	6801.05	1947.05	-964.72	95.00	9.63	9.57	1.20
		7297.00	78.22	356.79	193.3	-875.52	-99.95	6828.01	1974.01	-873.81	95.00	9.95	9.95	0.01
		7391.00	88.46	357.26	193.3	-782.41	-104.78	6838.90	1984.90	-780.63	94.00	10.90	10.89	0.50
		7486.00	89.88	357.56	193.3	-687.52	-109.07	6840.28	1986.28	-685.68	95.00	1.53	1.49	0.32
		7581.00	89.69	358.72	198.7	-592.57	-112.16	6840.63	1986.63	-590.69	95.00	1.24	-0.20	1.22
		7676.00	89.75	359.98	198.7	-497.58	-113.23	6841.10	1987.10	-495.70	95.00	1.33	0.06	1.33
		7770.00	89.75	3.11	201.4	-403.63	-110.70	6841.51	1987.51	-401.80	94.00	3.33	-0.00	3.33
		7865.00	89.97	3.95	198.7	-308.81	-104.85	6841.74	1987.74	-307.08	95.00	0.91	0.23	0.88
		7960.00	89.97	2.39	201.4	-213.96	-99.60	6841.79	1987.79	-212.33	95.00	1.64	-0.00	-1.64
		8054.00	90.09	354.69	204.1	-120.06	-101.99	6841.74	1987.74	-118.40	94.00	8.19	0.13	-8.19
		8149.00	89.94	353.91	204.1	-25.53	-111.43	6841.72	1987.72	-23.74	95.00	0.84	-0.16	-0.82
		8244.00	89.88	356.56	206.8	69.14	-119.32	6841.86	1987.86	71.04	95.00	2.79	-0.06	2.79
		8339.00	89.91	0.26	209.5	164.08	-121.95	6842.04	1988.04	166.02	95.00	3.89	0.03	3.89
		8434.00	89.88	7.06	209.5	258.83	-115.89	6842.21	1988.21	260.66	95.00	7.16	-0.03	7.16
		8528.00	90.06	7.30	196.0	352.10	-104.14	6842.26	1988.26	353.72	94.00	0.32	0.19	0.26
		8623.00	90.03	4.94	212.2	446.55	-94.02	6842.19	1988.19	448.00	95.00	2.48	-0.03	-2.48
		8718.00	90.03	1.39	214.9	541.39	-88.77	6842.14	1988.14	542.74	95.00	3.74	-0.00	-3.74
		8813.00	90.00	4.34	214.9	636.26	-84.02	6842.11	1988.11	637.52	95.00	3.11	-0.03	3.11
		8908.00	89.97	2.49	217.6	731.09	-78.36	6842.14	1988.14	732.25	95.00	1.95	-0.03	-1.95
		9002.00	90.03	359.86	217.6	825.06	-76.44	6842.14	1988.14	826.18	94.00	2.80	0.06	-2.80
		9097.00	90.00	357.31	217.6	920.02	-78.78	6842.11	1988.11	921.17	95.00	2.68	-0.03	-2.68
		9192.00	90.00	355.28	220.3	1014.82	-84.92	6842.11	1988.11	1016.05	95.00	2.14	0.00	-2.14
		9287.00	89.97	352.72	223.0	1109.29	-94.85	6842.14	1988.14	1110.67	95.00	2.69	-0.03	-2.69
		9382.00	89.91	349.94	220.3	1203.19	-109.17	6842.24	1988.24	1204.79	95.00	2.93	-0.06	-2.93
		9476.00	89.85	353.64	225.7	1296.21	-122.59	6842.43	1988.43	1298.02	94.00	3.94	-0.06	3.94
		9571.00	89.91	358.04	225.7	1390.94	-129.48	6842.63	1988.63	1392.84	95.00	4.63	0.06	4.63
		9666.00	89.94	359.14	225.7	1485.91	-131.82	6842.76	1988.76	1487.83	95.00	1.16	0.03	1.16
		9761.00	89.94	359.09	228.4	1580.90	-133.29	6842.86	1988.86	1582.83	95.00	0.05	0.00	-0.05
		9855.00	89.88	358.99	231.1	1674.89	-134.86	6843.01	1989.01	1676.83	94.00	0.12	-0.06	-0.11
		9950.00	89.91	358.51	233.8	1769.86	-136.93	6843.18	1989.18	1771.83	95.00	0.51	0.03	-0.51
		10045.00	89.82	357.43	233.8	1864.80	-140.30	6843.40	1989.40	1866.81	95.00	1.14	-0.09	-1.14
		10139.00	90.15	356.80	236.5	1958.68	-145.03	6843.43	1989.43	1960.76	94.00	0.76	0.35	-0.67
		10234.00	89.97	357.18	236.5	2053.55	-150.02	6843.33	1989.33	2055.69	95.00	0.44	-0.19	0.40
		10329.00	90.03	357.35	239.2	2148.44	-154.55	6843.33	1989.33	2150.65	95.00	0.19	0.06	0.18
		10423.00	90.09	358.90	239.2	2242.39	-157.63	6843.23	1989.23	2244.63	94.00	1.65	0.06	1.65
		10518.00	90.09	3.70	239.2	2337.34	-155.47	6843.08	1989.08	2339.53	95.00	5.05	0.00	5.05
		10613.00	90.12	6.22	239.2	2431.97	-147.26	6842.91	1988.91	2434.02	95.00	2.65	0.03	2.65
		10708.00	90.22	7.35	239.2	2526.30	-136.03	6842.62	1988.62	2528.16	95.00	1.19	0.11	1.19
		10802.00	90.52	5.07	239.2	2619.75	-125.87	6842.02	1988.02	2621.43	94.00	2.45	0.32	-2.43
		10897.00	90.77	4.14	236.5	2714.43	-118.24	6840.95	1986.95	2715.98	95.00	1.01	0.26	-0.98
		10992.00	90.28	2.89	236.5	2809.25	-112.42	6840.08	1986.08	2810.69	95.00	1.41	-0.52	-1.32
		11087.00	91.51	2.32	239.2	2904.13	-108.10	6838.59	1984.59	2905.50	95.00	1.43	1.29	-0.60
		11181.00	91.82	1.49	239.2	2998.04	-104.98	6835.86	1981.86	2999.34	94.00	0.94	0.33	-0.88
		11276.00	90.15	0.10	239.2	3093.01	-103.66	6834.23	1980.23	3094.28	95.00	2.29	-1.76	-1.46
		11360.00	91.42	0.32	233.8	3177.00	-103.35	6833.08	1979.08	3178.25	84.00	1.53	1.51	0.26
		11455.00	90.15	358.98	233.8	3271.99	-103.93	6831.78	1977.78	3273.24	95.00	1.94	-1.34	-1.41
		11550.00	90.06	357.32	233.8	3366.94	-107.00	6831.60	1977.60	3368.22	95.00	1.75	-0.09	-1.75
		11644.00	90.25	358.43	233.8	3460.87	-110.48	6831.35	1977.35	3462.20	94.00	1.20	0.20	1.18
		11739.00	90.25	358.47	236.5	3555.83	-113.05	6830.93	1976.93	3557.19	95.00	0.04	-0.00	0.04
		11834.00	90.25	359.75	236.5	3650.82	-114.53	6830.52	1976.52	3652.19	95.00	1.35	0.00	1.35
		11929.00	89.82	359.35	239.2	3745.82	-115.27	6830.46	1976.46	3747.18	95.00	0.62	-0.45	-0.42
		12023.00	89.78	357.90	239.2	3839.79	-117.53	6830.79	1976.79	3841.18	94.00	1.54	-0.04	-1.54
		12118.00	89.66	356.74	241.9	3934.68	-121.97	6831.25	1977.25	3936.13	95.00	1.23	-0.13	-1.22
		12213.00	89.85	355.76	244.6	4029.47	-128.19	6831.66	1977.66	4031.01	95.00	1.05	0.20	-1.03

	12308.00	89.88	356.00	244.6	4124.23	-135.01	6831.88	1977.88	4125.86	95.00	0.25	0.03	0.25
	12402.00	89.78	355.59	247.3	4217.97	-141.90	6832.16	1978.16	4219.71	94.00	0.45	-0.11	-0.44
	12497.00	89.63	356.90	247.3	4312.77	-148.12	6832.65	1978.65	4314.59	95.00	1.39	-0.16	1.38
	12591.00	89.72	358.30	247.3	4406.68	-152.06	6833.19	1979.19	4408.55	94.00	1.49	0.10	1.49
	12686.00	89.63	359.15	247.3	4501.65	-154.17	6833.72	1979.72	4503.55	95.00	0.90	-0.09	0.89
	12781.00	89.60	359.09	247.3	4596.64	-155.63	6834.36	1980.36	4598.55	95.00	0.07	-0.03	-0.06
	12876.00	89.82	0.28	250.0	4691.64	-156.16	6834.84	1980.84	4693.54	95.00	1.27	0.23	1.25
	12970.00	89.82	2.70	250.0	4785.60	-153.71	6835.14	1981.14	4787.45	94.00	2.57	-0.00	2.57
	13065.00	89.85	4.03	250.0	4880.43	-148.14	6835.41	1981.41	4882.18	95.00	1.40	0.03	1.40
	13160.00	89.69	5.04	250.0	4975.13	-140.62	6835.79	1981.79	4976.75	95.00	1.08	-0.17	1.06
	13255.00	89.78	4.01	252.7	5069.83	-133.13	6836.23	1982.23	5071.32	95.00	1.09	0.09	-1.08
	13349.00	89.72	2.76	255.4	5163.67	-127.58	6836.64	1982.64	5165.05	94.00	1.33	-0.06	-1.33
	13444.00	89.78	0.33	250.0	5258.62	-125.02	6837.06	1983.06	5259.95	95.00	2.56	0.06	-2.56
	13539.00	89.82	357.43	252.7	5353.59	-126.88	6837.39	1983.39	5354.94	95.00	3.05	0.04	-3.05
	13634.00	89.26	357.36	252.7	5448.49	-131.19	6838.15	1984.15	5449.90	95.00	0.59	-0.59	-0.07
	13729.00	89.05	356.87	93.2	5543.36	-135.97	6839.55	1985.55	5544.83	95.00	0.56	-0.22	-0.52
	13823.00	89.01	354.28	250.0	5637.06	-143.22	6841.14	1987.14	5638.63	94.00	2.76	-0.04	-2.76
	13918.00	90.12	353.58	252.7	5731.52	-153.27	6841.87	1987.87	5733.24	95.00	1.38	1.17	-0.74
	14013.00	90.22	354.54	252.7	5826.01	-163.10	6841.58	1987.58	5827.88	95.00	1.02	0.11	1.01
	14107.00	90.09	354.45	252.7	5919.58	-172.12	6841.33	1987.33	5921.58	94.00	0.17	-0.14	-0.10
	14202.00	89.97	355.44	255.4	6014.21	-180.49	6841.28	1987.28	6016.33	95.00	1.05	-0.13	1.04
	14297.00	89.94	357.57	255.4	6109.02	-186.28	6841.35	1987.35	6111.23	95.00	2.24	-0.03	2.24
	14392.00	89.97	2.54	255.4	6203.99	-186.19	6841.43	1987.43	6206.18	95.00	5.23	0.03	5.23
	14487.00	89.94	6.31	258.1	6298.69	-178.86	6841.50	1987.50	6300.75	95.00	3.97	-0.03	3.97
	14581.00	89.97	5.86	260.8	6392.16	-168.90	6841.58	1987.58	6394.05	94.00	0.48	0.03	-0.48
	14676.00	90.12	4.74	263.5	6486.76	-160.12	6841.50	1987.50	6488.49	95.00	1.19	0.16	-1.18
	14771.00	89.82	3.76	260.8	6581.49	-153.08	6841.55	1987.55	6583.10	95.00	1.08	-0.32	-1.03
	14866.00	90.09	1.01	263.5	6676.40	-149.13	6841.63	1987.63	6677.94	95.00	2.91	0.28	-2.89
	14960.00	89.94	355.25	352.7	6770.31	-152.19	6841.60	1987.60	6771.88	94.00	6.13	-0.16	-6.13
	15529.00	89.94	5.29	266.2	7336.78	-177.35	6842.00	1988.00	7338.68	95.00	2.24	0.00	2.24
	15624.00	89.94	4.21	266.2	7431.45	-169.49	6842.10	1988.10	7433.22	95.00	1.14	-0.00	-1.14
	15718.00	89.97	1.24	266.2	7525.34	-165.02	6842.17	1988.17	7527.02	94.00	3.16	0.03	-3.16
	15813.00	89.97	357.52	266.2	7620.32	-166.05	6842.22	1988.22	7622.00	95.00	3.92	0.00	-3.92
	15908.00	89.82	354.10	266.2	7715.05	-172.99	6842.40	1988.40	7716.83	95.00	3.60	-0.16	-3.60
	16003.00	89.91	353.39	266.2	7809.48	-183.34	6842.62	1988.62	7811.42	95.00	0.75	0.09	-0.75
	16098.00	89.97	353.87	263.5	7903.89	-193.88	6842.72	1988.72	7905.99	95.00	0.51	0.06	0.51
	16192.00	90.06	356.15	266.2	7997.53	-202.05	6842.70	1988.70	7999.75	94.00	2.43	0.10	2.43
	16287.00	90.03	0.14	266.2	8092.46	-205.13	6842.62	1988.62	8094.71	95.00	4.20	-0.03	4.20
	16382.00	90.43	2.93	266.2	8187.42	-202.58	6842.24	1988.24	8189.62	95.00	2.97	0.42	2.94
	16476.00	90.52	2.55	269.0	8281.31	-198.09	6841.46	1987.46	8283.42	94.00	0.42	0.10	-0.40
	16571.00	90.49	3.28	269.0	8376.18	-193.26	6840.62	1986.62	8378.20	95.00	0.77	-0.03	0.77
	16666.00	90.37	2.20	271.7	8471.07	-188.72	6839.91	1985.91	8473.01	95.00	1.14	-0.13	-1.14
	16761.00	90.28	1.53	231.1	8566.02	-185.63	6839.37	1985.37	8567.89	95.00	0.71	-0.09	-0.71
	16856.00	90.25	1.55	271.7	8660.98	-183.07	6838.93	1984.93	8662.80	95.00	0.04	-0.03	0.02
	16951.00	90.31	2.08	274.4	8755.93	-180.06	6838.47	1984.47	8757.69	95.00	0.56	0.06	0.56
	17045.00	90.40	2.11	274.4	8849.87	-176.63	6837.88	1983.88	8851.56	94.00	0.10	0.10	0.03
	17140.00	90.25	1.79	274.4	8944.81	-173.40	6837.35	1983.35	8946.44	95.00	0.37	-0.16	-0.34
	17235.00	90.00	3.07	271.7	9039.72	-169.37	6837.14	1983.14	9041.28	95.00	1.37	-0.26	1.35
	17330.00	90.00	1.60	274.4	9134.64	-165.50	6837.14	1983.14	9136.12	95.00	1.55	0.00	-1.55
	17425.00	89.85	1.69	274.4	9229.60	-162.77	6837.26	1983.26	9231.02	95.00	0.18	-0.16	0.09
	17519.00	89.94	0.39	277.1	9323.58	-161.06	6837.44	1983.44	9324.97	94.00	1.39	0.10	-1.38
	17606.00	89.94	359.31	277.1	9410.58	-161.29	6837.53	1983.53	9411.96	87.00	1.24	-0.00	-1.24
Projection	17630.00	89.94	359.31	N/A	9434.58	-161.58	6837.55	1983.55	9435.96	24.00	0.00	0.01	-0.00