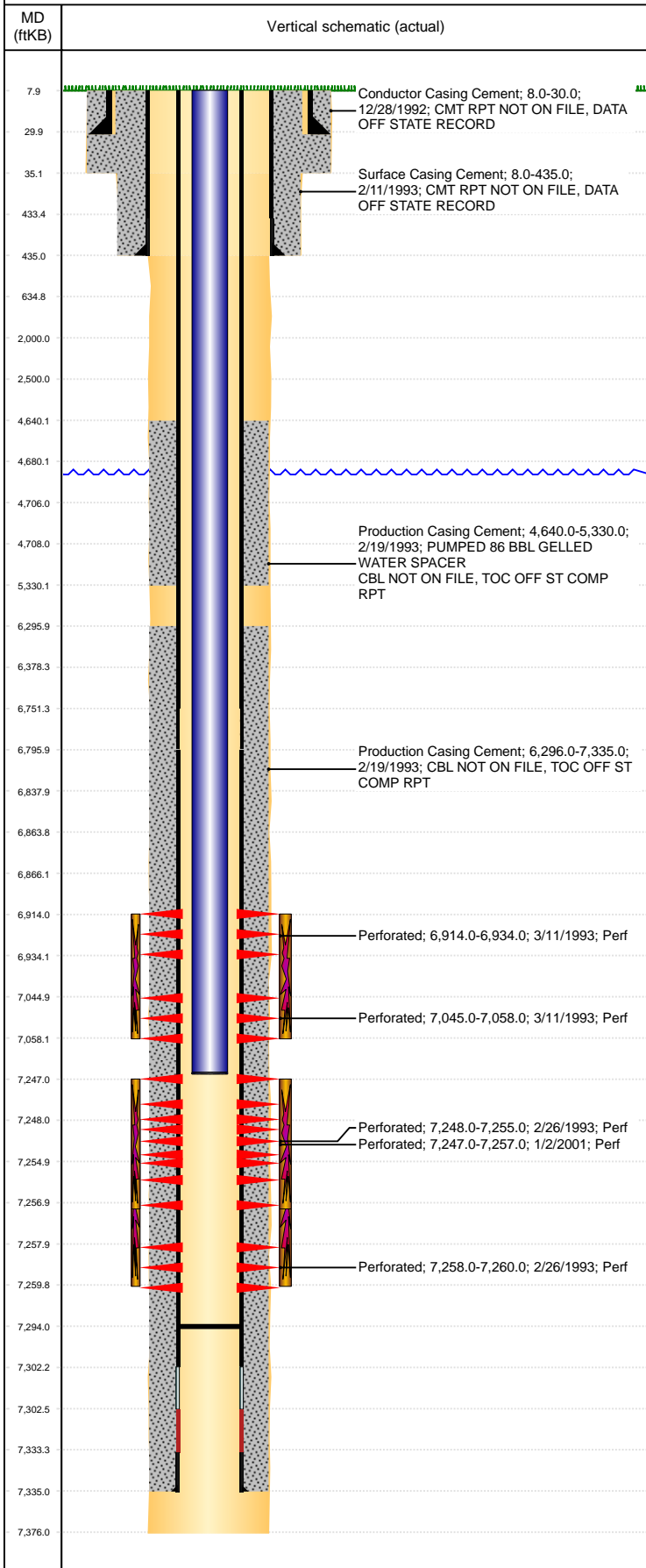


Well Name: CAMENISCH-SUPREME C 5-3

VERTICAL, ORIGINAL HOLE, 6/4/2019 2:21:24 PM



Well Header					
API	05-123-16459	Business Unit	DJ BASIN	District	15
KB - GL / MSL (ft...)	8.00	Spud Date	12/28/1992	P & A Date	
Well Production Status				SI	
SoRT				No	

Comment
NO CBL ON FILE OR WITH STATE, COMPLETION RPT STATES CBL WAS RAN 2/26/93

Surface Location (Congressional)							
Qtr 3	Qtr 4	Section	Twnshp	Twnsh...	Range	Rng E/...	Actual Latitude (°)
SW	NW	3	4	N	66	W	40.34450000
						Actual Longitude (°)	
						-104.77131000	

Wellbore Sections			
Section Des	Size (in)	Act Top, MD (ftKB)	Act Btm, MD (ftKB)
CONDUCTOR	16 1/2	8	35
SURFACE	12 1/4	35	435
PRODUCTION	7 7/8	435	7,376

Casing Strings						
Csg Des	Run Date	OD (in)	Wt/Len (lb/ft)	Grade	Top, MD (ftKB)	MD (ftKB)
Conductor	12/28/1992	14			8.0	30.0
Surface	2/11/1993	8 5/8	24.00		8.0	435.0
Production	2/18/1993	4 1/2	11.60	N-80	8.0	7,335.0

Cement			
Des	Start Date	Top (ftKB)	Btm (ftKB)
Conductor Casing Cement	12/28/1992	8.0	30.0
Surface Casing Cement	2/11/1993	8.0	435.0
Production Casing Cement	2/19/1993	4,640.0	5,330.0
Production Casing Cement	2/19/1993	6,296.0	7,335.0

Zone Statuses					
Zone Name	Status Date	Status	Fluid Type	Job	Prod Method
CODELL	8/22/2011	PR	Water	DRILLING/COMPLETION - ORIGINAL, 12/28/199...	Flowing
CODELL	11/29/2016	SI			
NIOBRARA	3/26/1993	PR			
NIOBRARA	8/22/2011	PR	Water		Flowing

Perforation Data					
Linked Zone	Bnch/Stg	Entered Shot Total	Top (ftKB)	Btm (ftKB)	Date
NIOBRARA, ORIGINAL HOLE	A	14	6,914.00	6,934.00	3/11/1993
NIOBRARA, ORIGINAL HOLE	B	14	7,045.00	7,058.00	3/11/1993
CODELL, ORIGINAL HOLE		40	7,247.00	7,257.00	1/2/2001
CODELL, ORIGINAL HOLE		16	7,248.00	7,255.00	2/26/1993
CODELL, ORIGINAL HOLE		4	7,258.00	7,260.00	2/26/1993

Stimulation Intervals			
Zone	Start Date	Top (ftKB)	Btm (ftKB)
NIOBRARA, ORIGINAL HOLE	3/12/1993	6,914.0	7,058.0
CODELL, ORIGINAL HOLE	1/16/2001	7,247.0	7,257.0
CODELL, ORIGINAL HOLE	3/8/1993	7,248.0	7,260.0

Other In Hole				
Run Date	Des	OD (in)	Top (ftKB)	Btm (ftKB)

Logs			
Date	Type	Top, MD (ftKB)	Btm, MD (ftKB)
2/18/1993	COMPENSATED DENSITY	2,500.0	7,341.0
2/18/1993	INDUCTION	2,500.0	7,370.0
1/2/2001	GAMMA RAY	6,700.0	7,272.0
10/11/2017	GYRO	0.0	7,150.0

Plug Back Total Depths			
Date	Type	Com	Depth (ftKB)
10/29/1993	FILL	WASH DOWN TO HARD BOTTOM	7,303.0
1/19/2001	FILL	CLEAN OUT	7,294.0