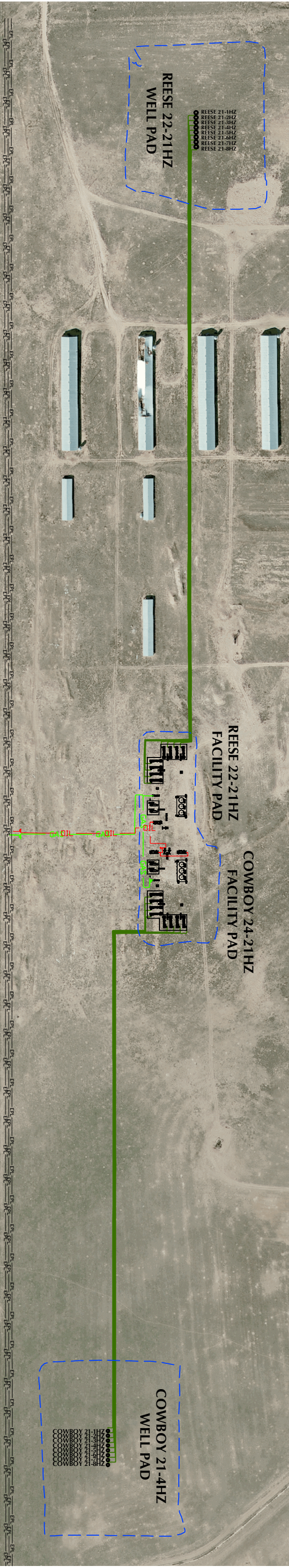


PAD: REESE 22-21HZ & COWBOY 24-21HZ			
BEGINNING		END	
WELL NAME	LATITUDE	LONGITUDE	
REESE 21-1HZ FLOWLINE	40.125498	-104.904056	40.125075
REESE 21-2HZ FLOWLINE	40.125498	-104.904001	40.125076
REESE 21-3HZ FLOWLINE	40.125499	-104.903947	40.125075
REESE 21-4HZ FLOWLINE	40.125498	-104.903892	40.125075
REESE 21-5HZ FLOWLINE	40.125497	-104.903838	40.125166
REESE 21-6HZ FLOWLINE	40.125498	-104.903785	40.125221
REESE 21-7HZ FLOWLINE	40.125498	-104.903731	40.125276
REESE 21-8HZ FLOWLINE	40.125498	-104.903678	40.125331
COWBOY 21-1HZ FLOWLINE	40.124677	-104.889554	40.125068
COWBOY 21-2HZ FLOWLINE	40.124677	-104.889500	40.125068
COWBOY 21-3HZ FLOWLINE	40.124677	-104.889445	40.125068
COWBOY 21-4HZ FLOWLINE	40.124676	-104.889393	40.125067
COWBOY 21-5HZ FLOWLINE	40.124677	-104.889337	40.125206
COWBOY 21-6HZ FLOWLINE	40.124676	-104.889284	40.125262
COWBOY 21-7HZ FLOWLINE	40.124675	-104.889232	40.125317
COWBOY 21-8HZ FLOWLINE	40.124676	-104.889177	40.125373



NOTES:
1. THIS EXHIBIT IS NOT A PROPERTY
BOUNDARY SURVEY AND CANNOT BE
RELIED UPON TO DETERMINE OWNERSHIP
2. LATITUDE AND LONGITUDE COORDINATES
ARE NAD 83 (2011)/(EPOCH:2010)

LEGEND:
AS-BUILT WELL
AS-BUILT FLOWLINE
EXISTING PAD
AS-BUILT GAS PIPELINE
AS-BUILT OIL PIPELINE
EXISTING PIPELINE

DATA SOURCES:
-AERIAL COURTESY OF ESRI, INC.

REV.	DATE	DESCRIPTION
A	5/10/19	

LOVELAND OFFICE
6706 North Franklin Avenue
Louisville, CO 80238
Phone 303.766-4311

SHERIDAN OFFICE
1095 Saberton Avenue
Sheridan, Wyoming 82801
Phone 307.674-0609

1099 18th Street
Denver, CO 80202

SCALE:
DATE SURVEYED:
DATE:
DRAFTER:
REVISED:

1" = 300'
5/10/19
SCB

REESE 22-21HZ & COWBOY 24-21HZ
FLOWLINE ROUTE
LOCATED IN SECTION 21
T2N, R67W, 6TH P.M.
WELD COUNTY, COLORADO

