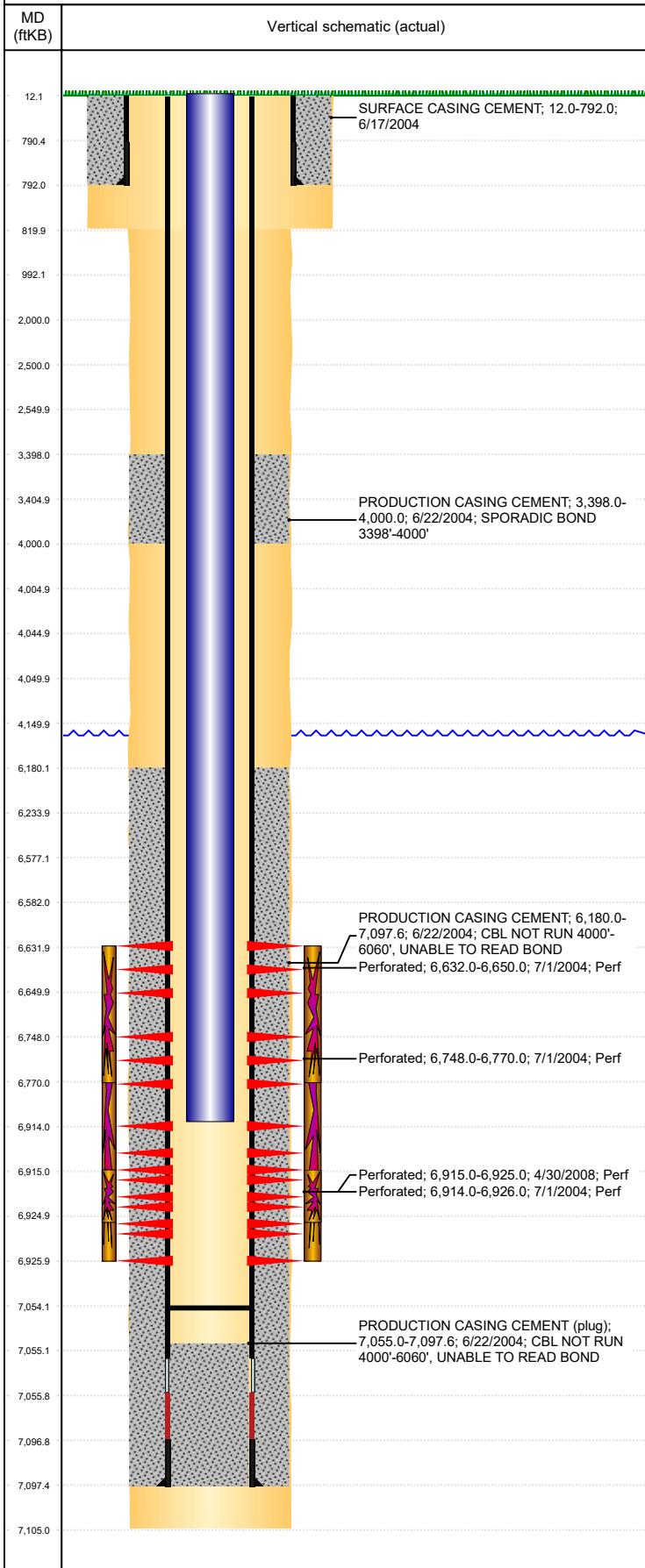


Well Name: GRUEN 22-33

VERTICAL, ORIGINAL HOLE, 5/30/2019 8:28:22 AM



Well Header									
API 05-123-22023		Business Unit DJ BASIN			District 15		Well Config VERTICAL		
KB - GL / MSL (ft... 12.00		Spud Date 6/15/2004		P & A Date		Well Production Status PR			SoRT No
Comment SFC CSG DEPTH DISCREPANCY: DRILLER'S RPT 792', ST COMP RPT 792', DEPTH CHANGED TO 803' AFTER ST COMP RPT WAS SUBMITTED, REASON UNKNOWN									
Surface Location (Congressional)									
Qtr 3 SW	Qtr 4 SW	Section 22	Twnshp 6	Twnsh... N	Range 64	Rng E/... W	Actual Latitude (°) 40.46621200	Actual Longitude (°) -104.54335400	
Wellbore Sections									
Section Des			Size (in)			Act Top, MD (ftKB)		Act Btm, MD (ftKB)	
SURFACE			12 1/4			12		820	
PRODUCTION			7 7/8			820		7,105	
Casing Strings									
Csg Des			Run Date	OD (in)	Wt/Len (lb/ft)	Grade	Top, MD (ftKB)	MD (ftKB)	
Surface			6/17/2004	8 5/8	24.00	J-55	12.0	792.0	
Production			6/22/2004	4 1/2	11.60	M-80	12.0	7,097.6	
Cement									
Des				Start Date		Top (ftKB)		Btm (ftKB)	
SURFACE CASING CEMENT				6/17/2004		12.0		792.0	
PRODUCTION CASING CEMENT				6/22/2004		3,398.0		4,000.0	
PRODUCTION CASING CEMENT				6/22/2004		6,180.0		7,097.6	
Zone Statuses									
Zone Name	Status Date	Status	Fluid Type	Job			Prod Method		
CODELL	8/25/2010	SI	Gas	RE-FRAC, 8/24/2010 06:00			RE-FRAC, 8/24/2010 06:00 DRILLING/COMPLETION - ORIGINAL, 6/15/2004...		
CODELL	9/29/2010	PR	Gas	RE-FRAC, 8/24/2010 06:00					
NIOBRARA	7/26/2004	PR	Gas						
NIOBRARA	9/29/2010	PR		RE-FRAC, 8/24/2010 06:00					
Perforation Data									
Linked Zone			Bnch/Stg	Entered Shot Total	Top (ftKB)		Btm (ftKB)		Date
NIOBRARA, ORIGINAL HOLE			A	72	6,632.00		6,650.00		7/1/2004
NIOBRARA, ORIGINAL HOLE			B	88	6,748.00		6,770.00		7/1/2004
CODELL, ORIGINAL HOLE				48	6,914.00		6,926.00		7/1/2004
CODELL, ORIGINAL HOLE				40	6,915.00		6,925.00		4/30/2008
Stimulation Intervals									
Zone				Start Date		Top (ftKB)		Btm (ftKB)	
NIOBRARA, ORIGINAL HOLE				9/13/2010		6,632.0		6,770.0	
NIOBRARA-CODELL, ORIGINAL HOLE				7/9/2004		6,632.0		6,926.0	
CODELL, ORIGINAL HOLE				5/14/2008		6,915.0		6,925.0	
Other In Hole									
Run Date		Des				OD (in)	Top (ftKB)	Btm (ftKB)	
Logs									
Date		Type				Top, MD (ftKB)		Btm, MD (ftKB)	
6/21/2004		COMPENSATED DENSITY				3,000.0		7,099.0	
6/21/2004		INDUCTION				803.0		7,099.0	
6/28/2004		CBL/CCL/GR				3,000.0		7,040.0	
9/28/2015		GYRO				12.0		6,800.0	
Plug Back Total Depths									
Date		Type		Com				Depth (ftKB)	
6/28/2004		FILL		DEPTH LOGGER				7,042.0	
9/24/2010		FILL		C/O SAND PLUG TO 7054.22' KB.				7,054.2	