

T7N, R80W, 6th P.M.

## SandRidge Exploration & Production, LLC

### AS-DRILLED

Pintail SWD 0780 2-16D located  
as shown in the SE1/4SW1/4, S1/2SE1/4  
of SECTION 16, T7N, R80W, 6th P.M.,  
Jackson County, Colorado.

### BASIS OF BEARINGS:

US STATE PLANE 1983  
CO NORTH 0501 GRID

### BASIS OF ELEVATION

SPOT ELEVATION AT THE NE CORNER OF SECTION 21,  
T7N, R80W, 6TH PM, TAKEN FROM THE COALMONT  
QUADRANGLE, USGS 7.5 MIN QUAD (TOPOGRAPHIC MAP)  
WITH SAID ELEVATION MARKED AS BEING 8223 FEET.

### SURFACE USE

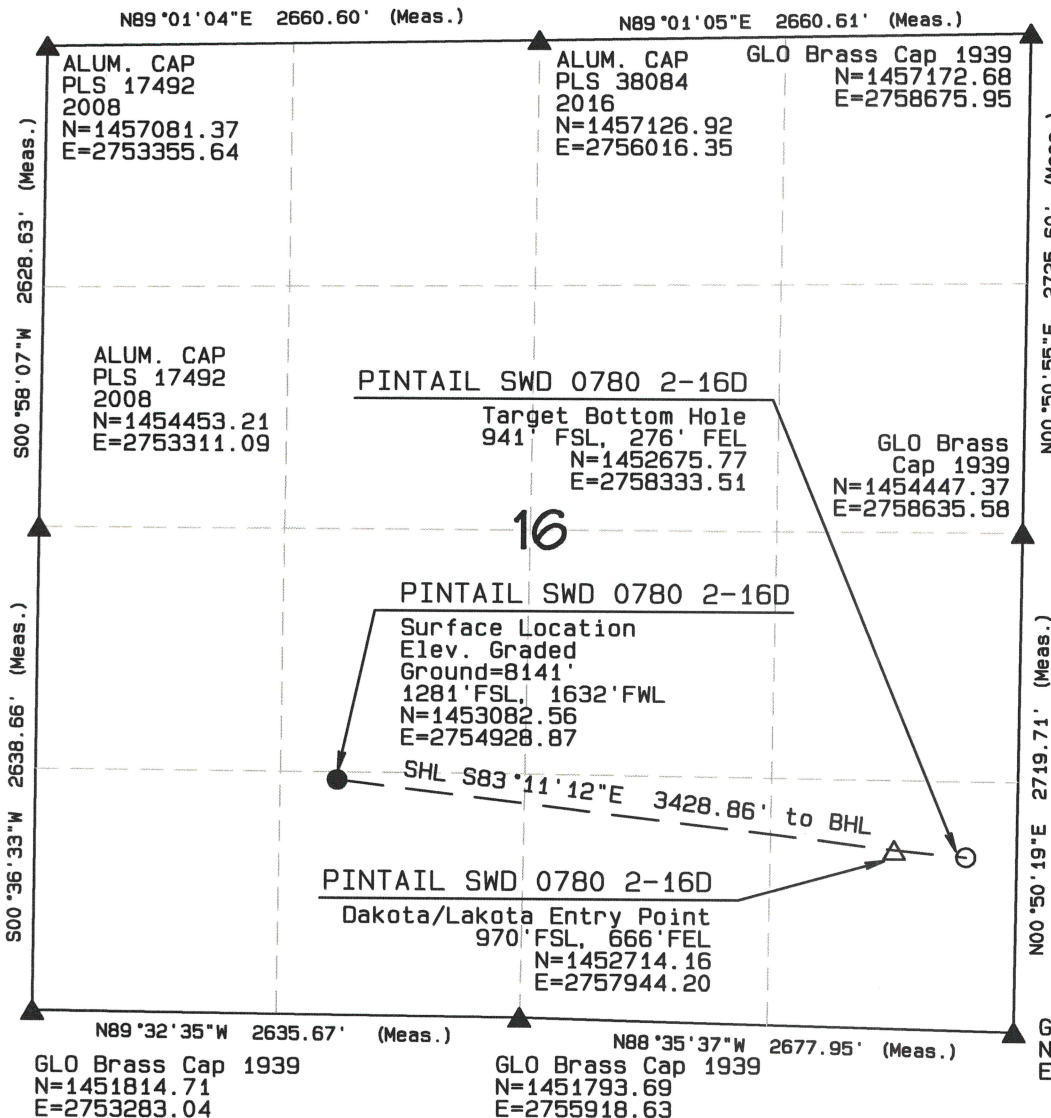
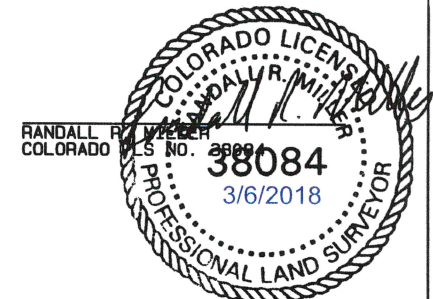
AGRICULTURAL/GRAZING

GRAPHIC SCALE 1"=1000'



### CERTIFICATE

THIS IS TO CERTIFY THAT THE ABOVE PLAT WAS PREPARED FROM  
FIELD NOTES OF ACTUAL SURVEYS MADE BY ME OR UNDER MY  
SUPERVISION AND THAT THE SAME ARE TRUE AND CORRECT TO THE  
BEST OF MY KNOWLEDGE AND BELIEF.



### LEGEND

FOUND CORNER ▲  
PROPOSED WELL ●  
PROPOSED BHL/LPL ○  
ENTRADA ENTRY POINT △

### NAD 83 (TARGET BOTTOM HOLE)

LATITUDE=40.57274 °N  
LONGITUDE=106.36994 °W

### NAD 83 (SURFACE LOCATION)

LATITUDE=40.57376 °N  
LONGITUDE=106.38221 °W PDOP=1.266

### NAD 83 (DAKOTA ENTRY POINT)

LATITUDE=40.57283 °N  
LONGITUDE=106.37134 °W

## NORTH PARK ENGINEERING & CONSULTING, INC.

P.O. BOX 395  
WALDEN, CO 80480  
(970) 723-3725

DATE OF FIELD WORK: FEB 21, 2018 DRAWING COMPLETION: MAR 6, 2018

SURVEYED BY: LRK

DRAWN BY: ADL

CHECKED BY: RRM