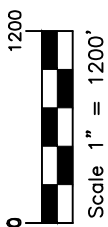
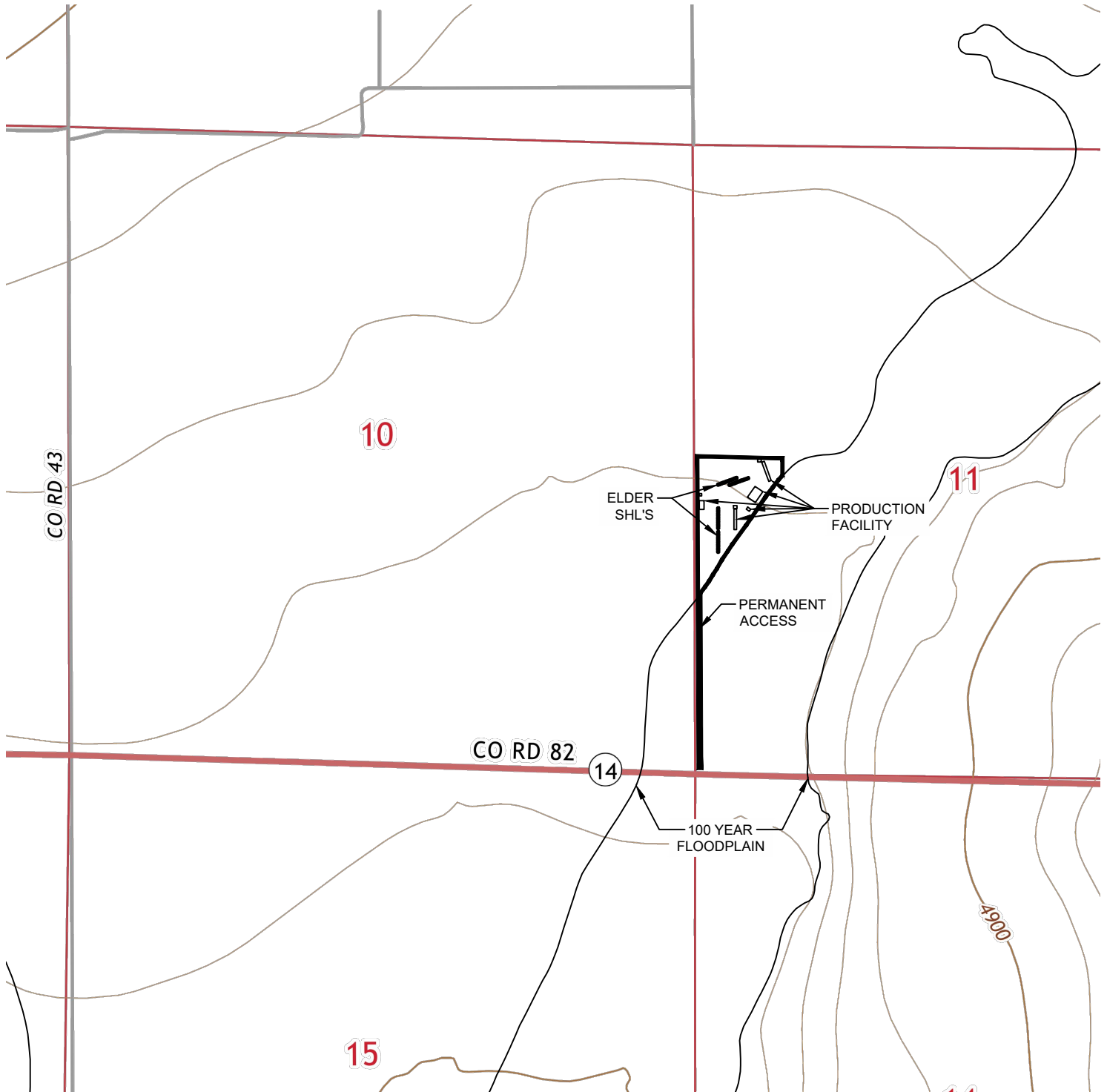




Washburn Land Surveying
www.WashburnSurveying.com
970-232-9645

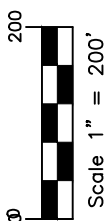
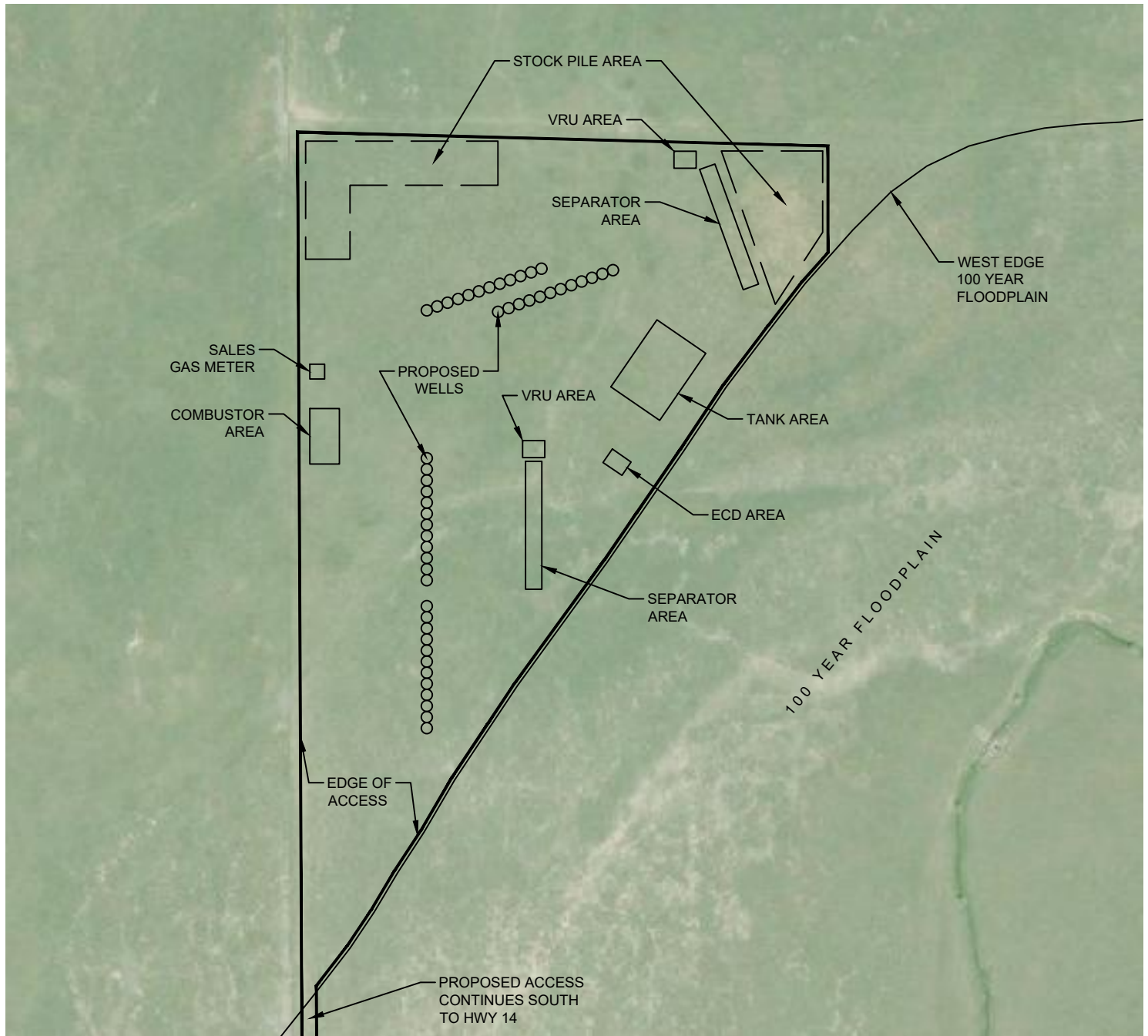
ACCESS ROAD MAP ELDER PAD

SECTION: 11
TOWNSHIP: 7N
RANGE: 65W
6TH P.M.
WELD COUNTY, CO



ACCESS ROAD MAP ELDER PAD

SECTION: 11
TOWNSHIP: 7N
RANGE: 65W
6TH P.M.
WELD COUNTY, CO



DIRECTIONS:

FROM THE INTERSECTION OF HIGHWAY 14 AND WELD COUNTY ROAD 43,
THENCE EAST ON HIGHWAY 14 FOR 5,311 FEET TO AN ACCESS TO THE NORTH, THENCE NORTH ON
PROPOSED ACCESS FOR 1,475 FEET TO PROPOSED PRODUCTION FACILITY OF THE WELL PAD.