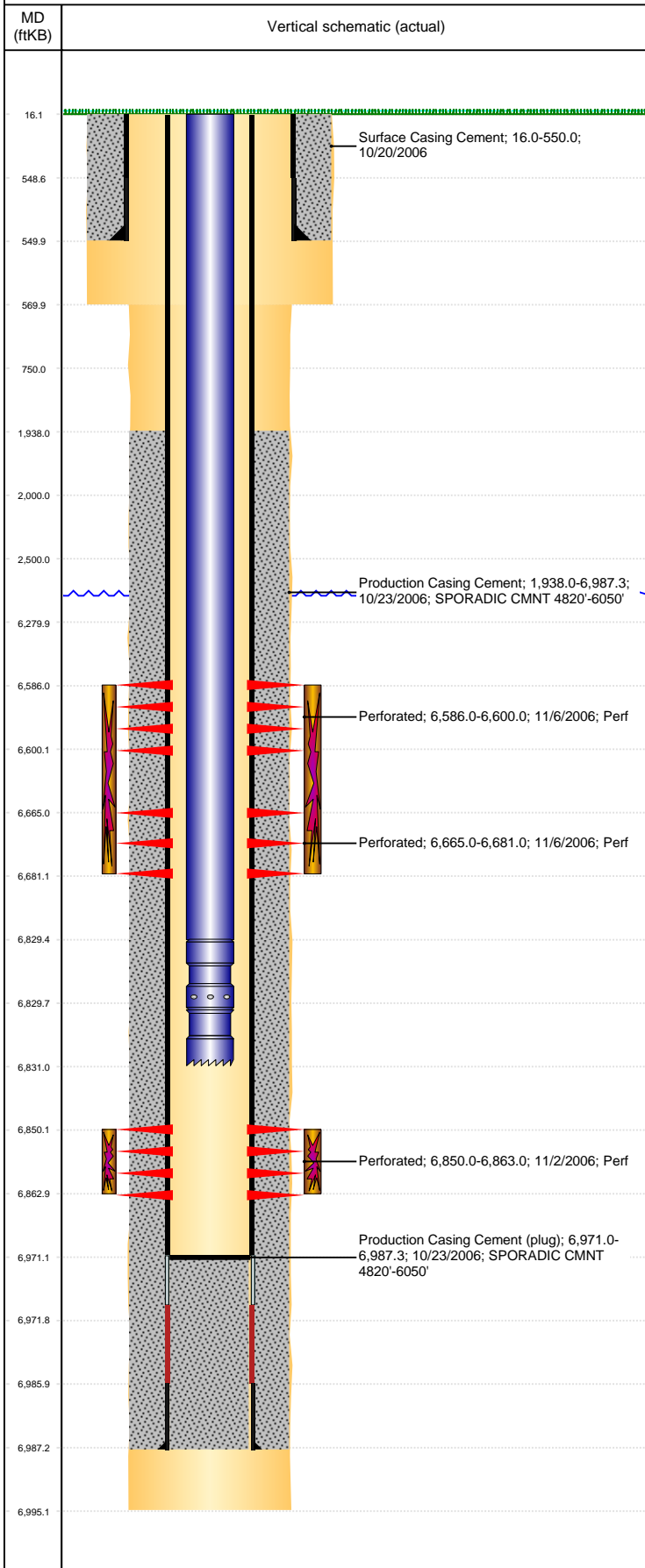


Well Name: SITZMAN C04-17

VERTICAL, ORIGINAL HOLE, 5/31/2019 10:16:51 AM



Well Header									
API 05-123-27308		Business Unit DJ BASIN		District 15		Well Config VERTICAL			
KB - GL / MSL (ft... 16.00		Spud Date 10/20/2006		P & A Date		Well Production Status SI			SoRT No
Comment TD DISCREPANCY: DRILLER & ST CMP RPT TD = 6991' & LOGGER TD = 6995'									
WELLHEAD IS 3000#									
Surface Location (Congressional)									
Qtr 3 SW	Qtr 4 NE	Section 4	Twnshp 4	Twnsh... N	Range 64	Rng E/... W	Actual Latitude (°) 40.34493557	Actual Longitude (°) -104.55052052	
Wellbore Sections									
Section Des		Size (in)			Act Top, MD (ftKB)		Act Btm, MD (ftKB)		
SURFACE		12 1/4			16		570		
PRODUCTION		7 7/8			570		6,995		
Casing Strings									
Csg Des		Run Date		OD (in)	Wt/Len (lb/ft)	Grade	Top, MD (ftKB)	MD (ftKB)	
Surface		10/20/2006		8 5/8	24.00	J-55	16.0	550.0	
Production		10/23/2006		4 1/2	11.60	M-80	16.0	6,987.3	
Cement									
Des				Start Date		Top (ftKB)		Btm (ftKB)	
Surface Casing Cement				10/20/2006		16.0		550.0	
Production Casing Cement				10/23/2006		1,938.0		6,987.3	
Zone Statuses									
Zone Name		Status Date	Status	Fluid Type	Job			Prod Method	
CODELL		11/8/2006	PR		DRILLING/COMPLETION - ORIGINAL, 10/20/200...				
NIOBRARA		11/8/2006	PR		DRILLING/COMPLETION - ORIGINAL, 10/20/200...				
Perforation Data									
Linked Zone		Bnch/Stg	Entered Shot Total	Top (ftKB)		Btm (ftKB)		Date	
NIOBRARA, ORIGINAL HOLE		A	84	6,586.00		6,600.00		11/6/2006	
NIOBRARA, ORIGINAL HOLE		B	96	6,665.00		6,681.00		11/6/2006	
CODELL, ORIGINAL HOLE			52	6,850.00		6,863.00		11/2/2006	
Stimulation Intervals									
Zone			Start Date			Top (ftKB)		Btm (ftKB)	
NIOBRARA, ORIGINAL HOLE			11/6/2006			6,586.0		6,681.0	
CODELL, ORIGINAL HOLE			11/6/2006			6,850.0		6,863.0	
Other In Hole									
Run Date		Des				OD (in)	Top (ftKB)	Btm (ftKB)	
Logs									
Date		Type				Top, MD (ftKB)		Btm, MD (ftKB)	
10/23/2006		COMPENSATED DENSITY				3,500.0		6,975.0	
10/23/2006		INDUCTION				550.0		6,995.0	
11/2/2006		CBL/CCL/GR				1,815.0		6,953.0	
9/16/2016		GYRO				0.0		6,750.0	
Plug Back Total Depths									
Date		Type		Com				Depth (ftKB)	
11/2/2006		FILL		DEPTH LOGGER ON CBL				6,955.0	
2/7/2007		PLUG REMNANTS		DRILL CFTP AND PUSH TO 6971'				6,971.0	